



HOOSIERS BY THE NUMBERS

Your premier source for labor market information for Indiana.

DWD

INDIANA DEPARTMENT OF
WORKFORCE
DEVELOPMENT

LABOR MARKET REVIEW



February 2026
Labor Market Review

Reported by: Jillian Gregory

Regional Workforce Analyst

[Email Jillian](#)

jgregory@dwd.in.gov

DWD

INDIANA DEPARTMENT OF
WORKFORCE
DEVELOPMENT



Economic Growth Region 9

Statistical Data Report for February 2026, Released April 2026

State Employment and Unemployment

Unemployment rates were higher in February in 1 state and stable in 49 states and the District of Columbia, the U.S. Bureau of Labor Statistics reported. Thirteen states and the district had jobless rate increases from a year earlier, 2 states had decreases, and 35 states had little change. The national unemployment rate, 4.4 percent, changed little over the month but was 0.2 percentage point higher than in February 2025.

In February 2026, non-farm payroll employment decreased in 2 states, increased in 1 state, and was essentially unchanged in 47 states and the District of Columbia. Over the year, nonfarm payroll employment decreased in 2 states and the district, increased in 2 states, and was essentially unchanged in 46 states.

Hawaii and South Dakota had the lowest jobless rates in February, 2.3 percent each. The District of Columbia had the highest unemployment rate, 6.5 percent. The next highest rates were in California and Delaware, 5.4 percent each. In total, 21 states had unemployment rates lower than the U.S. figure of 4.4 percent, 6 states and the district had higher rates, and 23 states had rates that were not appreciably different from that of the nation.



Economic Growth Region (EGR) 9

Bartholomew, Dearborn, Decatur, Franklin, Jackson, Jefferson, Jennings, Ohio, Ripley, and Switzerland Counties

February 2026 Labor Force Estimates (not seasonally adjusted)						
Area	Labor Force	Employed	Unemployed	Feb-26	Jan-26	Feb-25
U.S.	170,206,000	162,153,000	8,052,000	4.7%	4.7%	4.5%
IN	3,461,067	3,330,356	130,711	3.8%	3.3%	4.3%
EGR 9	165,651	159,573	6,078	3.7%	3.0%	4.2%
Columbus MSA	39,322	37,901	1,421	3.6%	3.0%	4.2%
Bartholomew Co.	39,322	37,901	1,421	3.6%	3.0%	4.2%
Dearborn Co.	26,952	25,943	1,009	3.7%	3.0%	4.1%
Decatur Co.	13,043	12,568	475	3.6%	3.2%	4.3%
Franklin Co.	11,804	11,379	425	3.6%	2.9%	4.2%
Jackson Co.	22,867	22,098	769	3.4%	2.7%	3.6%
Jefferson Co.	15,419	14,866	553	3.6%	3.0%	4.1%
Jennings Co.	14,760	14,137	623	4.2%	3.5%	4.7%
Ohio Co.	2,971	2,851	120	4.0%	2.9%	4.1%
Ripley Co.	14,500	13,984	516	3.6%	2.9%	4.3%
Switzerland Co.	4,013	3,846	167	4.2%	3.6%	5.0%
Batesville	3,846	3,723	123	3.2%	3.3%	3.4%
Brookville	1,378	1,321	57	4.1%	3.3%	5.2%
Columbus	24,086	23,240	846	3.5%	3.0%	4.1%
Greensburg	6,042	5,827	215	3.6%	3.0%	4.4%
Lawrenceburg	2,616	2,505	111	4.2%	3.2%	5.7%
Madison	5,592	5,424	168	3.0%	2.5%	3.8%
North Vernon	3,047	2,912	135	4.4%	3.8%	5.4%
Seymour	10,452	10,110	342	3.3%	2.7%	3.7%

Source: Indiana Department of Workforce Development, Research & Analysis, Local Area Unemployment Statistics | Unemployment Statistics Released: 04/26 | Notes: The data displayed are presented as estimates only. The most recent month's data are always preliminary and are revised when the next month's data are released.

Scott County moved out of Louisville KY MSA into Statewide employment

Unemployment Rates by State (seasonally adjusted): February 2026

U.S. - 4.4%

Illinois - 5%

Indiana - 3.3%

Kentucky - 4.2%

Michigan - 5%

Ohio - 4.2%

Source: U.S. Department of Labor, Bureau of Labor Statistics

Unemployment Rank by County (of 92 counties): February 2026

#18 - Jennings (4.2%)

#20 - Switzerland (4.2%)

#25 - Ohio (4%)

#41 - Dearborn (3.7%)

#47 - Bartholomew (3.6%)

#49 - Decatur (3.6%)

#52 - Franklin (3.6%)

#54 - Jefferson (3.6%)

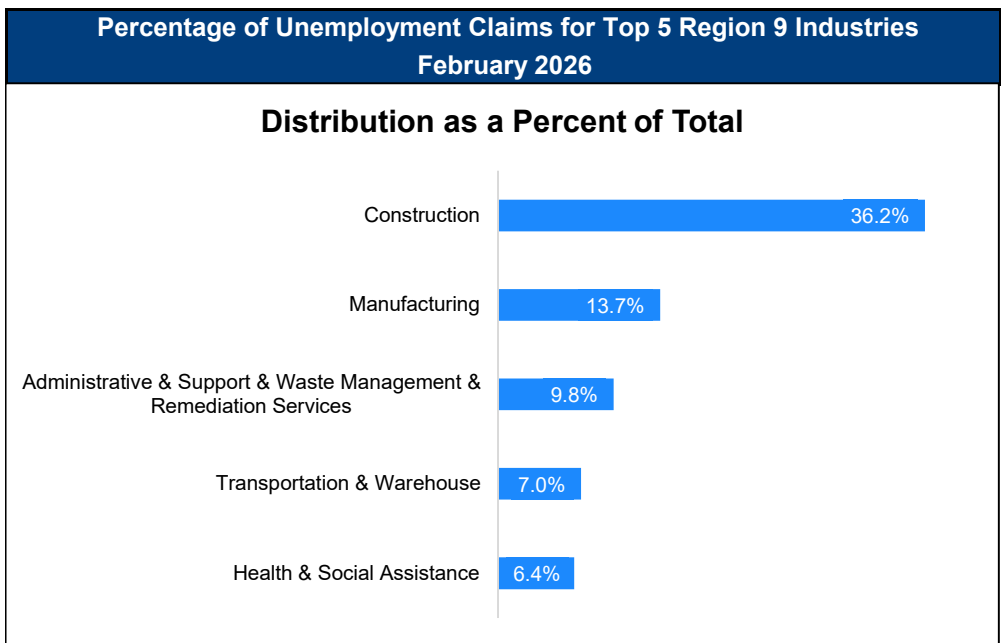
#60 - Ripley (3.6%)

#66 - Jackson (3.4%)

Source: Indiana Department of Workforce Development, Research and Development, Local Area Unemployment Statistics

Consumer Price Index (CPI-U Change), Unadjusted Percent Change to February 2026 from				
CPI Item	Feb-25	Jan-26	Feb-25	Jan-26
	U.S. City		Midwest Region*	
All Items	2.4%	0.5%	2.8%	0.6%
Food & Beverages	3.0%	0.4%	3.0%	0.9%
Housing	3.3%	0.3%	4.6%	0.7%
Apparel	2.5%	4.2%	3.0%	4.2%
Transportation	-0.5%	0.8%	-1.6%	0.5%
Medical Care	3.4%	0.4%	3.7%	0.5%
Recreation	2.3%	0.2%	4.1%	0.4%
Education & Communication	0.1%	-0.2%	0.0%	-0.8%
Other Goods & Services	5.1%	0.1%	2.4%	0.1%

*Midwest region = Midwest Urban Average. Midwest Region includes Illinois, Indiana, Iowa, Kansas, Michigan, Minnesota, Missouri, Nebraska, North Dakota, Ohio, South Dakota and Wisconsin | Source: U.S. Bureau of Labor Statistics



Source: Indiana Department of Workforce Development, Research and Analysis

WARN Notices

WARN Notices for Region 9 for February 2026				
Company	City	County	# of workers affected	Notice Date

There are no WARN Notices for February 2026 for EGR 9.

Source: Indiana Department of Workforce Development, WARN Notices | For information on WARN Act requirements, you may go to the U.S. Department of Labor Employment Training Administration Fact Sheet:

<https://www.doleta.gov/programs/factsht/warn.htm>

Unemployment Claims: February 2026

Region 9

Initial Claims

02/07/26 - 161(D)

02/14/26 - 74(D)

02/21/26 - 55(D)

02/28/26 - 38(D)

Continued Claims

02/07/26 - 900

02/14/26 - 850

02/21/26 - 799

02/28/26 - 744

Total Claims

02/07/26 - 1,061

02/14/26 - 924

02/21/26 - 854

02/28/26 - 782

State of Indiana

Initial Claims

02/07/26 - 4,025

02/14/26 - 2,941

02/21/26 - 2,469

02/28/26 - 2,514

Continued Claims

02/07/26 - 26,734

02/14/26 - 25,628

02/21/26 - 25,117

02/28/26 - 24,518

Total Claims

02/07/26 - 30,759

02/14/26 - 28,569

02/21/26 - 27,586

02/28/26 - 27,032

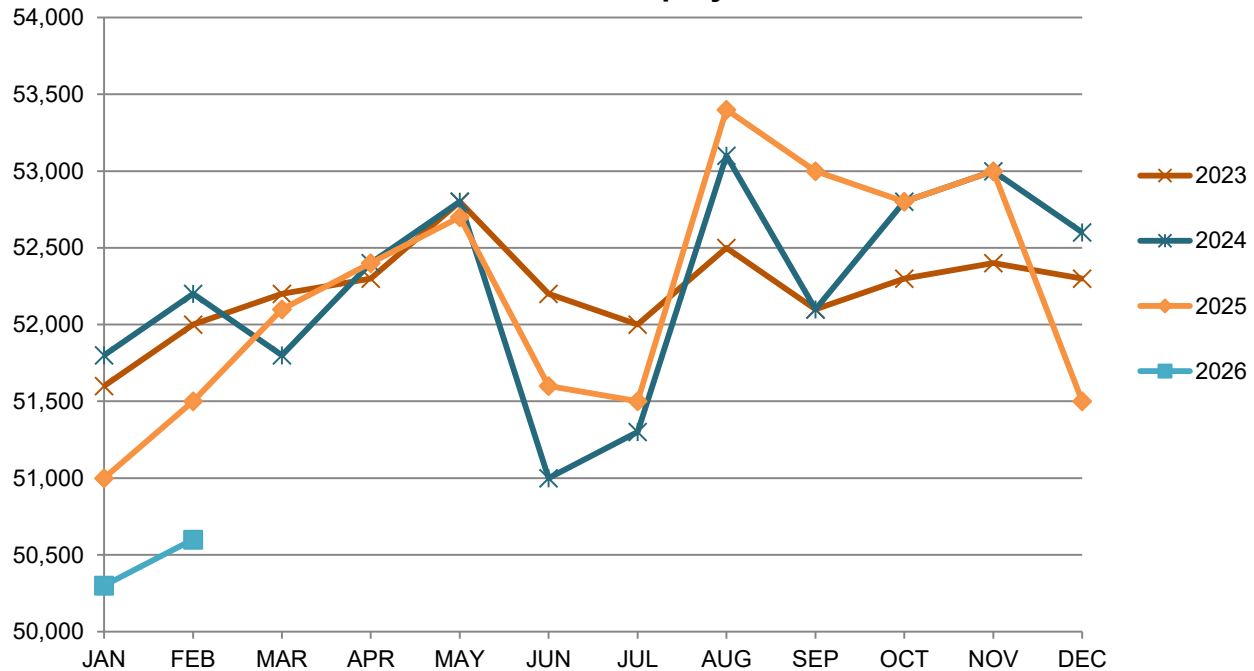
(D) indicates item is affected by non-disclosure issues relating to industry or ownership status | *Numbers subject to weekly revision | Source: Indiana Department of Workforce Development, Research and Analysis

Columbus MSA							
Wage and Salaried Employment	February 2026			# Change	% Change	# Change	% Change
Industry	Feb-26	Jan-26	Feb-25	Jan-26 to Feb-26	Feb-25 to Feb-26		
Total Nonfarm	50,600	50,300	51,500	300	0.6%	-900	-1.8%
Total Private	44,200	44,100	45,200	100	0.2%	-1,000	-2.2%
Goods Producing	19,600	19,600	20,500	0	0.0%	-900	-4.4%
Service-Providing	31,000	30,700	31,000	300	1.0%	0	0.0%
Private Service Providing	24,600	24,500	24,700	100	0.4%	-100	-0.4%
Mining, Logging and Construction	1,800	1,800	1,700	0	0.0%	100	5.9%
Manufacturing	17,800	17,800	18,800	0	0.0%	-1,000	-5.3%
Durable Goods	16,000	16,000	16,700	0	0.0%	-700	-4.2%
Trade, Transportation, and Utilities	7,300	7,400	7,600	-100	-1.4%	-300	-4.0%
Retail Trade	4,800	4,800	4,900	0	0.0%	-100	-2.0%
Information	200	200	300	0	0.0%	-100	-33.3%
Financial Activities	1,800	1,900	1,900	-100	-5.3%	-100	-5.3%
Professional and Business Services	4,900	4,800	4,700	100	2.1%	200	4.3%
Education and Health Services	4,900	4,800	4,800	100	2.1%	100	2.1%
Leisure and Hospitality	3,800	3,700	3,800	100	2.7%	0	0.0%
Other Services	1,700	1,700	1,600	0	0.0%	100	6.3%
Total Government	6,400	6,200	6,300	200	3.2%	100	1.6%
Federal Government	200	200	200	0	0.0%	0	0.0%
State Government	900	900	900	0	0.0%	0	0.0%
Local Government	5,300	5,100	5,200	200	3.9%	100	1.9%
Local Government Educational Services	2,200	2,100	2,100	100	4.8%	100	4.8%

Source: Indiana Dept of Workforce Development, Research and Analysis, Current Employment Statistics

Franklin Co. has been moved into the Cincinnati OH MSA employment

Columbus MSA Employment Trends



Source: Indiana Department of Workforce Development, Research & Analysis, Current Employment Statistics | Note: Historical data for the most recent 4 years (both seasonally adjusted and not seasonally adjusted) are revised near the beginning of each calendar year, prior to the release of January estimates for statewide data.

Frequently Listed Jobs	
Top 20 job listings by number of postings in Region 9 in the past month	
Rank	Occupations
1	Registered Nurses
2	Heavy and Tractor-Trailer Truck Drivers
3	Retail Salespersons
4	Home Health and Personal Care Aides
5	First-Line Supervisors of Retail Sales Workers
6	Customer Service Representatives
7	Maintenance and Repair Workers, General
8	Production Workers, All Other
9	Merchandise Displayers and Window Trimmers
10	Fast Food and Counter Workers
11	Food Service Managers
12	Medical and Health Services Managers
13	Licensed Practical and Licensed Vocational Nurses
14	Food Preparation Workers
15	Nursing Assistants
16	Stockers and Order Fillers
17	Janitors and Cleaners, Except Maids and Housekeeping Cleaners
18	Laborers and Freight, Stock, and Material Movers, Hand
19	Cashiers
20	First-Line Supervisors of Food Preparation and Serving Workers

Source: Lightcast

Applicant Pool	
Top 20 occupations desired by applicants on their resumes in the past 12 months	
Occupations	# of Applicants
Production Workers, All Other	190
Assemblers and Fabricators, All Other	124
Customer Service Representatives	72
Helpers--Production Workers	69
Heavy and Tractor-Trailer Truck Drivers	66
Office Clerks, General	60
Laborers and Freight, Stock, and Material Movers, Hand	52
Cashiers	50
Construction Laborers	50
Industrial Truck and Tractor Operators	47
Managers, All Other	45
Team Assemblers	44
Office and Administrative Support Workers, All Other	41
Retail Salespersons	38
Welders, Cutters, Solderers, and Brazers	34
Secretaries and Administrative Assistants, Except Legal, Medical, and Executive	32
First-Line Supervisors of Production and Operating Workers	31
Shipping, Receiving, and Traffic Clerks	31
Extraction Workers, All Other	29
Carpenters	28

Source: Indiana Workforce Development, Indiana Career Connect

SNAPSHOT

February Indiana Employment



Released April 22, 2026

Unemployment Rate

*seasonally adjusted

Unemployment Rate

3.3%



January 2026 Indiana

3.4%



National Unemployment Rate



LABOR FORCE PARTICIPATION RATE*

16+: **63.4%**

25-44: **84.3%**

25-54: **83.9%**



National Labor Force



Open Job Postings

85,672

Jobs

As of February 28, 2026



Weekly UI Continued Claims

24,518



Filed Week Ending March 7, 2026

Source: Local Area Unemployment Statistics; Bureau of Labor Statistics; Indiana Career Connect

* The percentage of Hoosiers 16 and older who are either working or actively looking for work. Those not in the labor force include primarily, students, retirees and other non-working populations, such as individuals unable to work due to a disability or illness, or adults responsible for their family's childcare needs.

