



HOOSIERS BY THE NUMBERS

Your premier source for labor market information for Indiana.

DWD

INDIANA DEPARTMENT OF
WORKFORCE
DEVELOPMENT

LABOR MARKET REVIEW



September 2025 Labor Market Review

Reported by: Jillian Gregory

Regional Workforce Analyst

[Email Jillian](#)

jgregory@dwd.in.gov

DWD

INDIANA DEPARTMENT OF
WORKFORCE
DEVELOPMENT



Economic Growth Region 9

Statistical Data Report for September 2025, Released December 2025

State Employment and Unemployment

Unemployment rates were higher in September in 8 states, lower in 2 states, and stable in 40 states and the District of Columbia, the U.S. Bureau of Labor Statistics reported. Eighteen states and the district had jobless rate increases from a year earlier, 9 states had decreases, and 23 states had little change. The national unemployment rate, 4.4 percent, changed little over the month but was 0.3 percentage point higher than in September 2024.

In September 2025, nonfarm payroll employment increased in 1 state, decreased in 1 state, and was essentially unchanged in 48 states and the District of Columbia. Over the year, nonfarm payroll employment increased in 15 states and was essentially unchanged in 35 states and the district.

South Dakota had the lowest jobless rate in September, 2.0 percent. The District of Columbia had the highest unemployment rate, 6.2 percent. The next highest rate was in California, 5.6 percent. In total, 22 states had unemployment rates lower than the U.S. figure of 4.4 percent, 3 states and the district had higher rates, and 25 states had rates that were not appreciably different from that of the nation.



Economic Growth Region (EGR) 9

Bartholomew, Dearborn, Decatur, Franklin, Jackson, Jefferson, Jennings, Ohio, Ripley, and Switzerland Counties

September 2025 Labor Force Estimates (not seasonally adjusted)						
Area	Labor Force	Employed	Unemployed	Sep-25	Aug-25	Sep-24
U.S.	171,217,000	163,894,000	7,324,000	4.3%	4.5%	3.9%
IN	3,500,370	3,377,247	123,123	3.5%	3.8%	4.0%
EGR 9	167,835	162,321	5,514	3.3%	3.5%	3.6%
Columbus MSA	40,386	39,021	1,365	3.4%	3.6%	3.8%
Bartholomew Co.	40,386	39,021	1,365	3.4%	3.6%	3.8%
Dearborn Co.	27,043	26,207	836	3.1%	3.3%	3.7%
Decatur Co.	13,102	12,652	450	3.4%	3.5%	3.5%
Franklin Co.	11,928	11,568	360	3.0%	3.2%	3.4%
Jackson Co.	23,131	22,394	737	3.2%	3.5%	3.2%
Jefferson Co.	15,744	15,179	565	3.6%	4.0%	3.7%
Jennings Co.	14,815	14,331	484	3.3%	3.4%	3.5%
Ohio Co.	2,990	2,895	95	3.2%	3.4%	3.6%
Ripley Co.	14,614	14,156	458	3.1%	3.3%	3.5%
Switzerland Co.	4,082	3,918	164	4.0%	4.1%	4.4%
Batesville	3,902	3,775	127	3.3%	3.5%	3.5%
Brookville	1,378	1,339	39	2.8%	2.9%	3.0%
Columbus	24,773	23,928	845	3.4%	3.7%	3.9%
Greensburg	6,108	5,892	216	3.5%	3.6%	3.5%
Lawrenceburg	2,609	2,532	77	3.0%	3.0%	5.5%
Madison	5,782	5,562	220	3.8%	4.0%	3.8%
North Vernon	3,058	2,953	105	3.4%	3.7%	4.1%
Seymour	10,389	10,058	331	3.2%	3.5%	3.3%

Source: Indiana Department of Workforce Development, Research & Analysis, Local Area Unemployment Statistics | Unemployment Statistics Released: 12/25 | Notes: The data displayed are presented as estimates only. The most recent month's data are always preliminary and are revised when the next month's data are released.

Scott County moved out of Louisville KY MSA into Statewide employment

Unemployment Rates by State (seasonally adjusted): September 2025

U.S. - 4.4%

Illinois - 4.4%

Indiana - 3.7%

Kentucky - 4.7%

Michigan - 5.1%

Ohio - 4.8%

Source: U.S. Department of Labor, Bureau of Labor Statistics

Unemployment Rank by County (of 92 counties): September 2025

#9 - Switzerland (4%)

#27 - Jefferson (3.6%)

#43 - Bartholomew (3.4%)

#44 - Decatur (3.4%)

#57 - Jennings (3.3%)

#67 - Jackson (3.2%)

#69 - Ohio (3.2%)

#72 - Dearborn (3.1%)

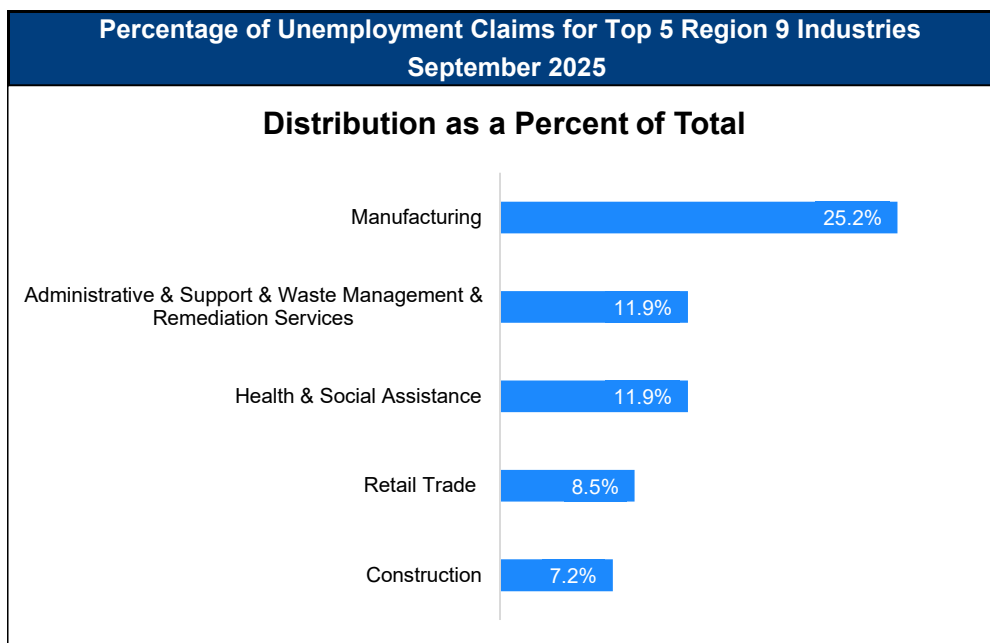
#77 - Ripley (3.1%)

#81 - Franklin (3%)

Source: Indiana Department of Workforce Development, Research and Development, Local Area Unemployment Statistics

Consumer Price Index (CPI-U Change), Unadjusted Percent Change to September 2025 from				
CPI Item	Sep-24	Aug-25	Sep-24	Aug-25
	U.S. City		Midwest Region*	
All Items	3.0%	0.3%	3.1%	0.3%
Food & Beverages	3.0%	0.3%	2.8%	0.2%
Housing	3.9%	0.1%	4.5%	0.2%
Apparel	-0.1%	2.6%	1.2%	4.1%
Transportation	1.7%	0.1%	0.5%	-0.5%
Medical Care	3.3%	0.2%	2.9%	0.5%
Recreation	3.0%	0.3%	4.7%	0.6%
Education & Communication	0.4%	0.2%	0.6%	0.7%
Other Goods & Services	4.1%	0.4%	3.3%	0.9%

*Midwest region = Midwest Urban Average. Midwest Region includes Illinois, Indiana, Iowa, Kansas, Michigan, Minnesota, Missouri, Nebraska, North Dakota, Ohio, South Dakota and Wisconsin | Source: U.S. Bureau of Labor Statistics



Source: Indiana Department of Workforce Development, Research and Analysis

WARN Notices

WARN Notices for Region 9 for September 2025				
Company	City	County	# of workers affected	Notice Date
GT Industries, Inc.	North Vernon	Jennings	95	9/29/2025

Source: Indiana Department of Workforce Development, WARN Notices | For information on WARN Act requirements, you may go to the U.S. Department of Labor Employment Training Administration Fact Sheet:

<https://www.doleta.gov/programs/factsht/warn.htm>

Unemployment Claims: September 2025

Region 9

Initial Claims

09/06/25 - 30(D)

09/13/25 - 37(D)

09/20/25 - 38(D)

09/27/25 - 21(D)

Continued Claims

09/06/25 - 496

09/13/25 - 498

09/20/25 - 471

09/27/25 - 463

Total Claims

09/06/25 - 526

09/13/25 - 535

09/20/25 - 509

09/27/25 - 484

State of Indiana

Initial Claims

09/06/25 - 2,348

09/13/25 - 2,652

09/20/25 - 2,456

09/27/25 - 2,285

Continued Claims

09/06/25 - 20,005

09/13/25 - 19,658

09/20/25 - 19,093

09/27/25 - 19,375

Total Claims

09/06/25 - 22,353

09/13/25 - 22,310

09/20/25 - 21,549

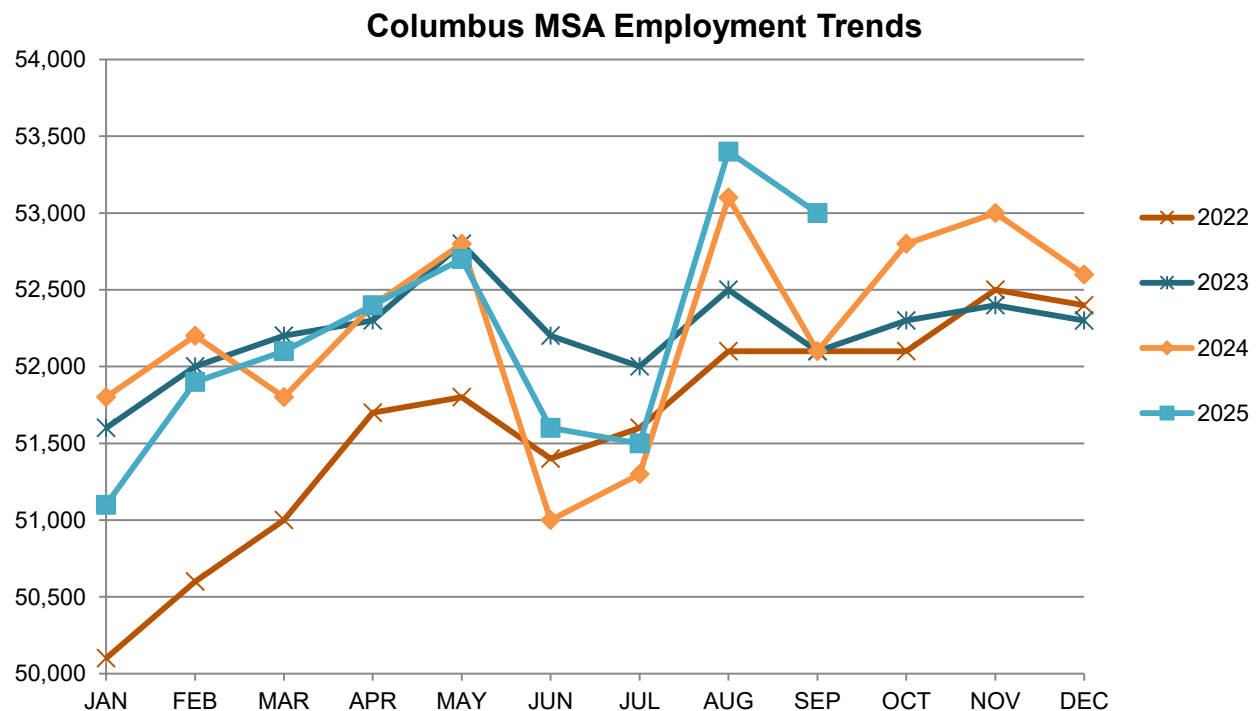
09/27/25 - 21,660

(D) indicates item is affected by non-disclosure issues relating to industry or ownership status | *Numbers subject to weekly revision | Source: Indiana Department of Workforce Development, Research and Analysis

Columbus MSA							
Wage and Salaried Employment	September 2025			# Change	% Change	# Change	% Change
Industry	Sep-25	Aug-25	Sep-24	Aug-25 to Sep-25		Sep-24 to Sep-25	
Total Nonfarm	53,000	53,400	52,100	-400	-0.8%	900	1.7%
Total Private	46,700	47,100	46,000	-400	-0.9%	700	1.5%
Goods Producing	21,500	21,700	21,100	-200	-0.9%	400	1.9%
Service-Providing	31,500	31,700	31,000	-200	-0.6%	500	1.6%
Private Service Providing	25,200	25,400	24,900	-200	-0.8%	300	1.2%
Mining, Logging and Construction	2,000	2,000	1,900	0	0.0%	100	5.3%
Manufacturing	19,500	19,700	19,200	-200	-1.0%	300	1.6%
Durable Goods	17,200	17,300	17,200	-100	-0.6%	0	0.0%
Trade, Transportation, and Utilities	7,600	7,700	7,600	-100	-1.3%	0	0.0%
Retail Trade	4,800	4,900	4,800	-100	-2.0%	0	0.0%
Information	200	200	300	0	0.0%	-100	-33.3%
Financial Activities	1,800	1,800	1,800	0	0.0%	0	0.0%
Professional and Business Services	5,000	5,000	4,800	0	0.0%	200	4.2%
Education and Health Services	4,900	4,900	4,800	0	0.0%	100	2.1%
Leisure and Hospitality	4,100	4,200	4,000	-100	-2.4%	100	2.5%
Other Services	1,600	1,600	1,600	0	0.0%	0	0.0%
Total Government	6,300	6,300	6,100	0	0.0%	200	3.3%
Federal Government	200	200	200	0	0.0%	0	0.0%
State Government	800	800	700	0	0.0%	100	14.3%
Local Government	5,300	5,300	5,200	0	0.0%	100	1.9%
Local Government Educational Services	2,100	2,100	2,100	0	0.0%	0	0.0%

Source: Indiana Dept of Workforce Development, Research and Analysis, Current Employment Statistics

Franklin Co. has been moved into the Cincinnati OH MSA employment



Source: Indiana Department of Workforce Development, Research & Analysis, Current Employment Statistics | Note: Historical data for the most recent 4 years (both seasonally adjusted and not seasonally adjusted) are revised near the beginning of each calendar year, prior to the release of January estimates for statewide data.

Frequently Listed Jobs	
Top 20 job listings by number of postings in Region 9 in the past month	
Rank	Occupations
1	Registered Nurses
2	Retail Salespersons
3	Physical Therapists
4	Customer Service Representatives
5	Maintenance and Repair Workers, General
6	Home Health and Personal Care Aides
7	Heavy and Tractor-Trailer Truck Drivers
8	Cardiovascular Technologists and Technicians
9	First-Line Supervisors of Retail Sales Workers
10	Food Service Managers
11	Merchandise Displayers and Window Trimmers
12	Production Workers, All Other
13	Nursing Assistants
14	Radiologic Technologists and Technicians
15	Fast Food and Counter Workers
16	Food Preparation Workers
17	Licensed Practical and Licensed Vocational Nurses
18	Nurse Practitioners
19	Janitors and Cleaners, Except Maids and Housekeeping Cleaners
20	Laborers and Freight, Stock, and Material Movers, Hand

Source: Lightcast

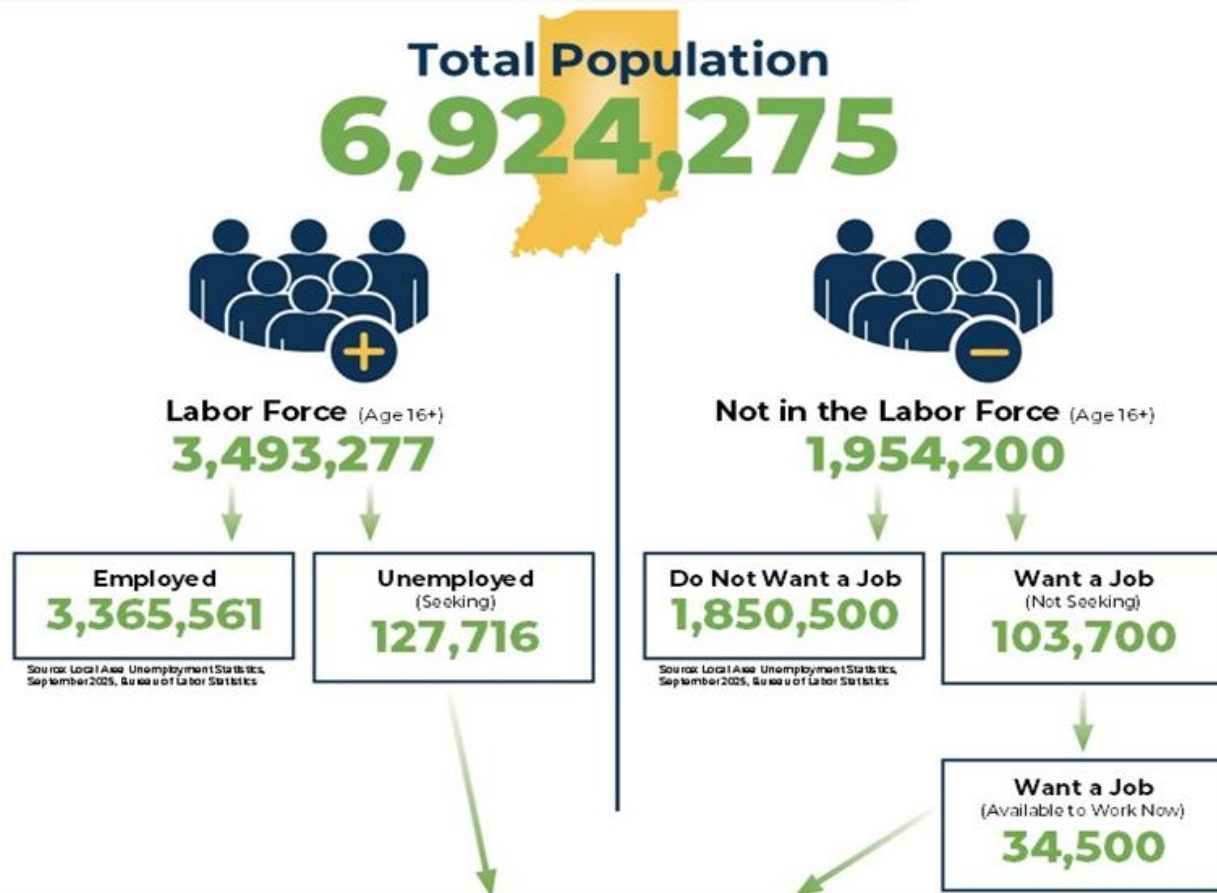
Applicant Pool	
Top 20 occupations desired by applicants on their resumes in the past 12 months	
Occupations	# of Applicants
Production Workers, All Other	353
Assemblers and Fabricators, All Other	222
Helpers--Production Workers	134
Customer Service Representatives	129
Heavy and Tractor-Trailer Truck Drivers	121
Laborers and Freight, Stock, and Material Movers, Hand	105
Office Clerks, General	90
Cashiers	89
Construction Laborers	88
Managers, All Other	81
Extraction Workers, All Other	77
Industrial Truck and Tractor Operators	77
Office and Administrative Support Workers, All Other	71
First-Line Supervisors of Production and Operating Workers	65
Team Assemblers	65
Carpenters	59
Retail Salespersons	59
Welders, Cutters, Solderers, and Brazers	59
Secretaries and Administrative Assistants, Except Legal, Medical, and Executive	58
Construction and Related Workers, All Other	56

Source: Indiana Workforce Development, Indiana Career Connect

BREAKDOWN

September Indiana Labor Force

Released December 11, 2025



Potential Workers

(Unemployed and Seeking a Job + Not in the Labor Force but Want a Job/Available to Work Now)

162,216

More about the US Bureau of Labor Statistics data sources used within:
Local Area Unemployment Statistics (LAUS): Capture Indiana's labor force which includes those currently employed and those who are unemployed and actively seeking work.
Current Population Survey (CPS): Capture individuals not participating in Indiana's Labor Force. The set includes non-participants that do not want a job (i.e. retirees and students) and those that want a job but are not actively seeking work.
U.S. Census Bureau, Indiana Population 2024.

Resource Notes on Using Current Population Survey (CPS) Subnational Data and Differences Between CPS and LAUS Estimates

SNAPSHOT

September Indiana Employment

Released December 11, 2025



Unemployment Rate

*seasonally adjusted

Unemployment Rate

3.7%

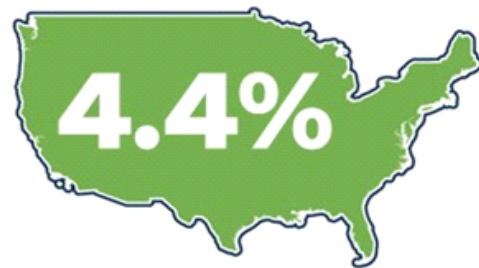


August 2025 Indiana

3.6%



National Unemployment Rate



LABOR FORCE PARTICIPATION RATE*

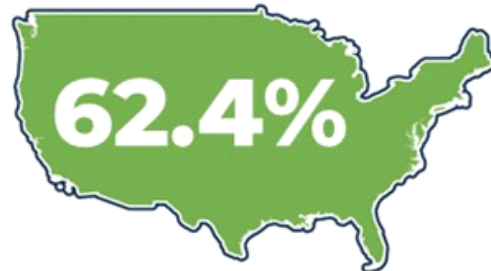
16+: **63.7%**

25-44: **85.1%**

25-54: **84.6%**



National Labor Force



Open Job Postings

88,436

Jobs

As of September 25, 2025



Weekly UI Continued Claims

19,375

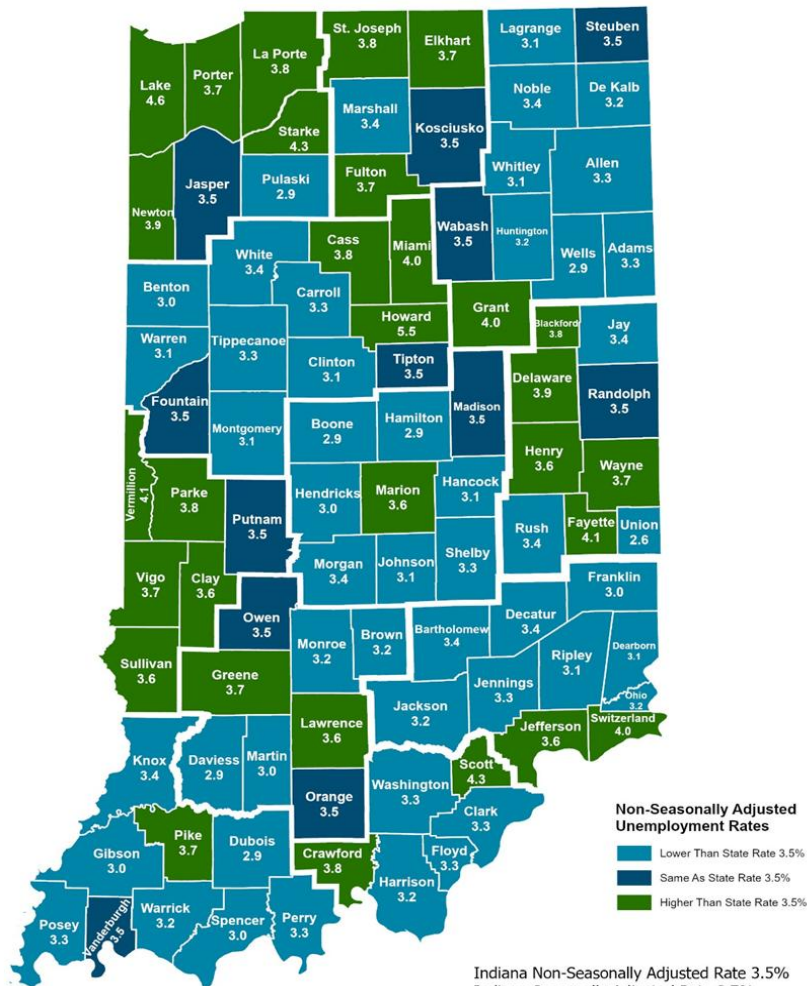


Filed Week Ending October 4, 2025

Source: Local Area Unemployment Statistics; Bureau of Labor Statistics; Indiana Career Connect

* The percentage of Hoosiers 16 and older who are either working or actively looking for work. Those not in the labor force include primarily, students, retirees and other non-working populations, such as individuals unable to work due to a disability or illness, or adults responsible for their family's childcare needs.

County Unemployment Rates September 2025



Indiana Non-Seasonally Adjusted Rate 3.5%
Indiana Seasonally Adjusted Rate 3.7%
Source: DWD, Local Area Unemployment Statistics



Questions?

Please contact the DWD
Research and Analysis
Regional Labor Analyst
listed below:

Jillian A. Gregory
Regional Labor Analyst
Research and Analysis

[Indiana Department of
Workforce Development](https://www.in.gov/dwd/)

jgregory@dwd.in.gov