



HOOSIERS BY THE NUMBERS

Your premier source for labor market information for Indiana.

DWD

INDIANA DEPARTMENT OF
WORKFORCE
DEVELOPMENT

LABOR MARKET REVIEW



**December 2024
Labor Market Review**

Reported by: Jillian Gregory

Regional Workforce Analyst

[Email Jillian](#)

jgregory@dwd.in.gov

DWD

INDIANA DEPARTMENT OF
WORKFORCE
DEVELOPMENT

Economic Growth Region 9

Statistical Data Report for December 2024, Released February 2025

State Employment and Unemployment

Unemployment rates were higher in December in 6 states, lower in 2 states, and stable in 42 states and the District of Columbia, the U.S. Bureau of Labor Statistics reported. Twenty-seven states and the district had jobless rate increases from a year earlier, 6 states had decreases, and 17 states had little change. The national unemployment rate changed little over the month at 4.1 percent but was 0.3 percentage points higher than in December 2023.

Nonfarm payroll employment increased in 2 states and was essentially unchanged in 48 states and the District of Columbia in December 2024. Over the year, nonfarm payroll employment increased in 33 states and was essentially unchanged in 17 states and the district.

South Dakota had the lowest jobless rate in December, 1.9 percent. Nevada had the highest unemployment rate, 5.7 percent, followed by California and the District of Columbia, 5.5 percent each. In total, 21 states had unemployment rates lower than the U.S. figure of 4.1 percent, 5 states and the district had higher rates, and 24 states had rates that were not appreciably different from that of the nation.



Economic Growth Region (EGR) 9

Bartholomew, Dearborn, Decatur, Franklin, Jackson, Jefferson, Jennings, Ohio, Ripley, and Switzerland Counties

December 2024 Labor Force Estimates (not seasonally adjusted)						
Area	Labor Force	Employed	Unemployed	Dec-24	Nov-24	Dec-23
U.S.	167,746,000	161,294,000	6,452,000	3.8%	4.0%	3.5%
IN	3,439,659	3,301,061	138,598	4.0%	4.2%	2.9%
EGR 9	169,199	162,919	6,280	3.7%	3.8%	2.6%
Columbus MSA	44,386	42,816	1,570	3.5%	3.7%	2.4%
Bartholomew Co.	44,386	42,816	1,570	3.5%	3.7%	2.4%
Dearborn Co.	26,052	25,071	981	3.8%	3.9%	2.7%
Decatur Co.	14,571	14,070	501	3.4%	3.5%	2.3%
Franklin Co.	10,657	10,220	437	4.1%	4.2%	2.5%
Jackson Co.	23,135	22,401	734	3.2%	3.4%	2.3%
Jefferson Co.	15,287	14,714	573	3.7%	4.0%	2.5%
Jennings Co.	14,069	13,420	649	4.6%	4.1%	3.0%
Ohio Co.	3,199	3,102	97	3.0%	3.5%	2.7%
Ripley Co.	13,191	12,651	540	4.1%	4.2%	3.1%
Switzerland Co.	4,652	4,454	198	4.3%	4.3%	3.1%
Batesville	3,377	3,265	112	3.3%	3.4%	2.2%
Brookville	1,031	973	58	5.6%	4.5%	3.4%
Columbus	25,390	24,481	909	3.6%	3.8%	2.6%
Greensburg	6,436	6,208	228	3.5%	3.8%	2.6%
Lawrenceburg	2,016	1,892	124	6.2%	7.3%	4.8%
Madison	5,522	5,316	206	3.7%	3.9%	2.6%
North Vernon	3,009	2,844	165	5.5%	5.1%	3.7%
Seymour	10,500	10,164	336	3.2%	3.5%	2.2%

Unemployment Rates by State (seasonally adjusted): December 2024

U.S. - 4.1%

Illinois - 5.2%

Indiana - 4.5%

Kentucky - 5.2%

Michigan - 5%

Ohio - 4.4%

Source: U.S. Department of Labor, Bureau of Labor Statistics

Unemployment Rank by County (of 92 counties): December 2024

#17 - Jennings (4.6%)

#28 - Switzerland (4.3%)

#32 - Franklin (4.1%)

#35 - Ripley (4.1%)

#46 - Dearborn (3.8%)

#53 - Jefferson (3.7%)

#65 - Bartholomew (3.5%)

#70 - Decatur (3.4%)

#79 - Jackson (3.2%)

#90 - Ohio (3%)

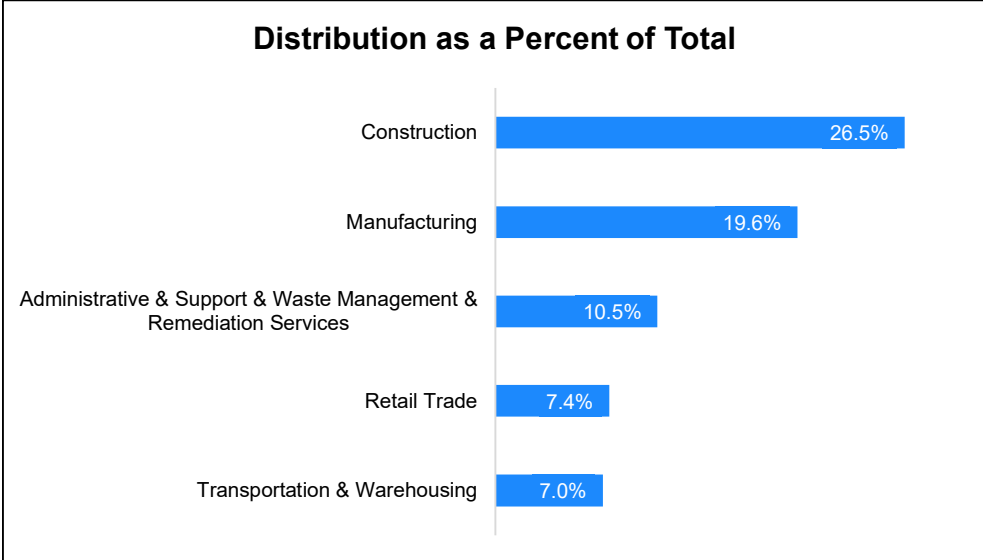
Source: Indiana Department of Workforce Development, Research and Development, Local Area Unemployment Statistics

Source: Indiana Department of Workforce Development, Research & Analysis, Local Area Unemployment Statistics | Unemployment Statistics Released: 01/25 | Notes: The data displayed are presented as estimates only. The most recent month's data are always preliminary and are revised when the next month's data are released.

Consumer Price Index (CPI-U Change), Unadjusted Percent Change to December 2024 from				
CPI Item	Dec-23	Nov-24	Dec-23	Nov-24
	U.S. City		Midwest Region*	
All Items	2.9%	0.0%	3.0%	0.2%
Food & Beverages	2.4%	0.2%	2.0%	-0.2%
Housing	4.1%	0.2%	4.9%	0.4%
Apparel	1.2%	-1.7%	1.3%	-2.5%
Transportation	1.6%	-0.3%	1.4%	0.3%
Medical Care	2.8%	0.1%	2.3%	0.2%
Recreation	1.1%	0.0%	1.3%	0.1%
Education & Communication	0.6%	-0.1%	-0.2%	0.1%
Other Goods & Services	3.3%	-0.4%	5.0%	-0.4%

*Midwest region = Midwest Urban Average. Midwest Region includes Illinois, Indiana, Iowa, Kansas, Michigan, Minnesota, Missouri, Nebraska, North Dakota, Ohio, South Dakota and Wisconsin | Source: U.S. Bureau of Labor Statistics

Percentage of Unemployment Claims for Top 5 Region 9 Industries December 2024



Source: Indiana Department of Workforce Development, Research and Analysis

WARN Notices

WARN Notices for Region 9 for December 2024				
Company	City	County	# of workers affected	Notice Date

There are no WARN Notices for December 2024 for EGR 9.

Source: Indiana Department of Workforce Development, WARN Notices | For information on WARN Act requirements, you may go to the U.S. Department of Labor Employment Training Administration Fact Sheet:

<https://www.doleta.gov/programs/factsht/warn.htm>

Unemployment Claims: December 2024

Region 9

Initial Claims

12/07/24 - 158(D)
 12/14/24 - 144(D)
 12/21/24 - 152(D)
 12/28/24 - 154(D)

Continued Claims

12/07/24 - 700
 12/14/24 - 725
 12/21/24 - 788
 12/28/24 - 898

Total Claims

12/07/24 - 858
 12/14/24 - 869
 12/21/24 - 940
 12/28/24 - 1,052

State of Indiana

Initial Claims

12/07/24 - 5,319
 12/14/24 - 3,846
 12/21/24 - 3,726
 12/28/24 - 3,675

Continued Claims

12/07/24 - 23,610
 12/14/24 - 24,094
 12/21/24 - 24,631
 12/28/24 - 28,033

Total Claims

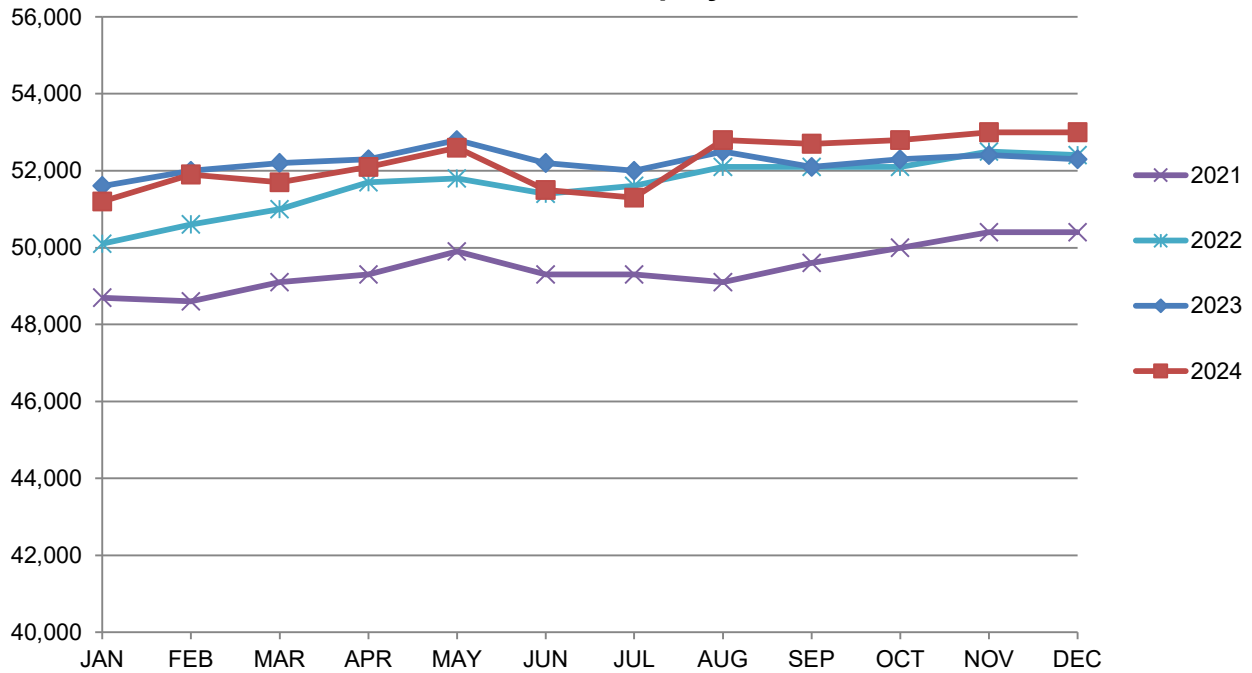
12/07/24 - 28,929
 12/14/24 - 27,940
 12/21/24 - 28,357
 12/28/24 - 31,708

(D) indicates item is affected by non-disclosure issues relating to industry or ownership status | *Numbers subject to weekly revision | Source: Indiana Department of Workforce Development, Research and Analysis

Columbus MSA							
Wage and Salaried Employment	December 2024			# Change	% Change	# Change	% Change
	Dec-24	Nov-24	Dec-23	Nov-24 to Dec-24	Dec-23 to Dec-24	Dec-23 to Dec-24	Dec-23 to Dec-24
Industry	Dec-24	Nov-24	Dec-23	Nov-24 to Dec-24	Dec-23 to Dec-24	Dec-23 to Dec-24	Dec-23 to Dec-24
Total Nonfarm	53,000	53,000	52,300	0	0.0%	700	1.3%
Total Private	46,500	46,500	45,900	0	0.0%	600	1.3%
Goods Producing	21,100	21,200	21,000	-100	-0.5%	100	0.5%
Service-Providing	31,900	31,800	31,300	100	0.3%	600	1.9%
Private Service Providing	25,400	25,300	24,900	100	0.4%	500	2.0%
Mining, Logging and Construction	1,800	1,800	1,700	0	0.0%	100	5.9%
Manufacturing	19,300	19,400	19,300	-100	-0.5%	0	0.0%
Durable Goods	17,200	17,200	17,300	0	0.0%	-100	-0.6%
Trade, Transportation, and Utilities	8,000	7,800	7,700	200	2.6%	300	3.9%
Retail Trade	5,000	4,900	5,000	100	2.0%	0	0.0%
Information	300	300	300	0	0.0%	0	0.0%
Financial Activities	1,600	1,600	1,600	0	0.0%	0	0.0%
Professional and Business Services	5,000	5,000	5,000	0	0.0%	0	0.0%
Education and Health Services	4,900	4,900	4,800	0	0.0%	100	2.1%
Leisure and Hospitality	4,200	4,300	4,100	-100	-2.3%	100	2.4%
Other Services	1,400	1,400	1,400	0	0.0%	0	0.0%
Total Government	6,500	6,500	6,400	0	0.0%	100	1.6%
Federal Government	200	200	200	0	0.0%	0	0.0%
State Government	1,000	1,000	1,000	0	0.0%	0	0.0%
Local Government	5,300	5,300	5,200	0	0.0%	100	1.9%
Local Government Educational Services	2,100	2,100	2,100	0	0.0%	0	0.0%

Source: Indiana Dept of Workforce Development, Research and Analysis, Current Employment Statistics

Columbus MSA Employment Trends



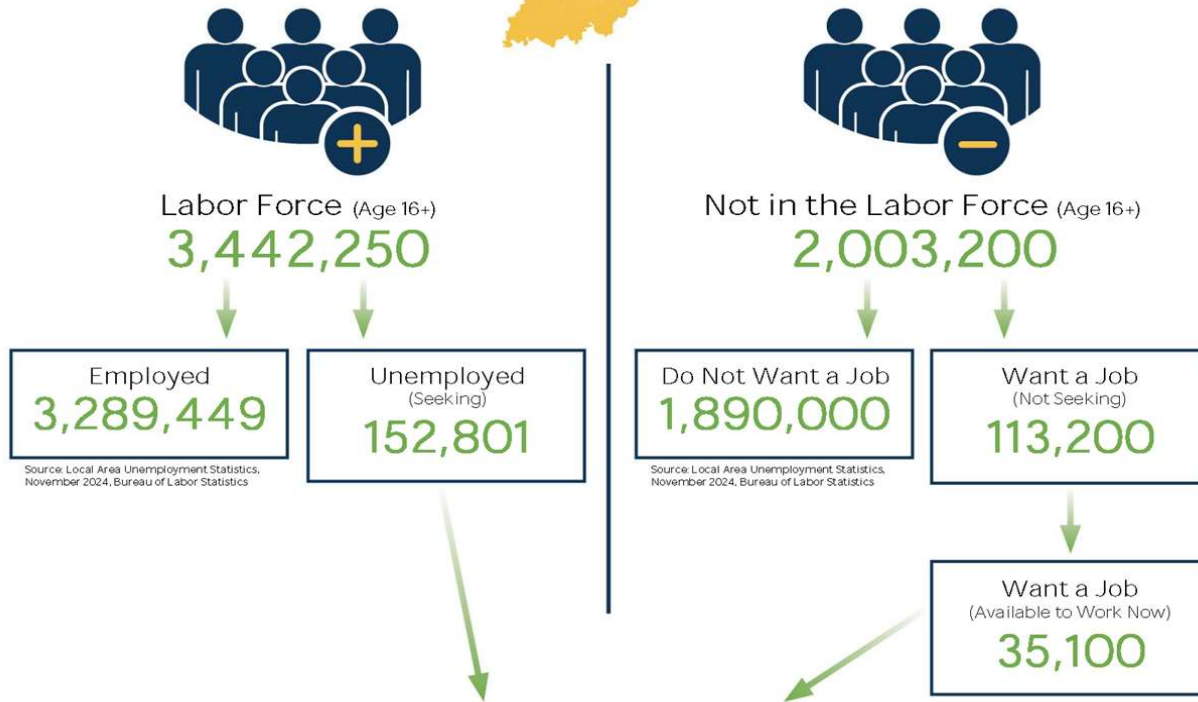
Source: Indiana Department of Workforce Development, Research & Analysis, Current Employment Statistics | Note: Historical data for the most recent 4 years (both seasonally adjusted and not seasonally adjusted) are revised near the beginning of each calendar year, prior to the release of January estimates for statewide data.

Frequently Listed Jobs	
Top 20 job listings in Region 9 in the past month	
Rank	Occupations
1	Landscaping and Groundskeeping Workers
2	Maids and Housekeeping Cleaners
3	Construction Laborers
4	Agricultural Equipment Operators
5	Registered Nurses
6	Nursing Assistants
7	Human Resources Specialists
8	Security Guards
9	Licensed Practical and Licensed Vocational Nurses
10	Mechanical Engineers
11	Industrial Engineers
12	Occupational Therapists
13	Clinical Nurse Specialists
14	Speech-Language Pathologists
15	Gambling Change Persons and Booth Cashiers
16	Coin, Vending, and Amusement Machine Servicers and Repairers
17	Medical and Health Services Managers
18	Psychiatric Aides
19	Customer Service Representatives
20	Food Preparation Workers

Applicant Pool	
Top 20 occupations desired by applicants on their resumes in the past 12 months	
Occupations	# of Applicants
Production Workers, All Other	399
Assemblers and Fabricators, All Other	268
Helpers--Production Workers	175
Customer Service Representatives	145
Laborers and Freight, Stock, and Material Movers, Hand	133
Heavy and Tractor-Trailer Truck Drivers	124
Cashiers	120
Office Clerks, General	104
Industrial Truck and Tractor Operators	97
Extraction Workers, All Other	90
Construction Laborers	88
Managers, All Other	87
Office and Administrative Support Workers, All Other	86
First-Line Supervisors of Production and Operating Workers	77
Secretaries and Administrative Assistants, Except Legal, Medical, and Executive	72
Construction and Related Workers, All Other	68
Retail Salespersons	67
Inspectors, Testers, Sorters, Samplers, and Weighers	66
Electrical and Electronic Equipment Assemblers	60
Team Assemblers	60

Source: Indiana Workforce Development, Indiana Career Connect. * Due to an upgrade in the reporting system, there is a notable change in Job Postings recorded. The tool used to measure Job Postings was upgraded to prevent malicious or false postings. While customers adjust to the enhancements a drop in the record is to be expected.

Total Population
6,862,199

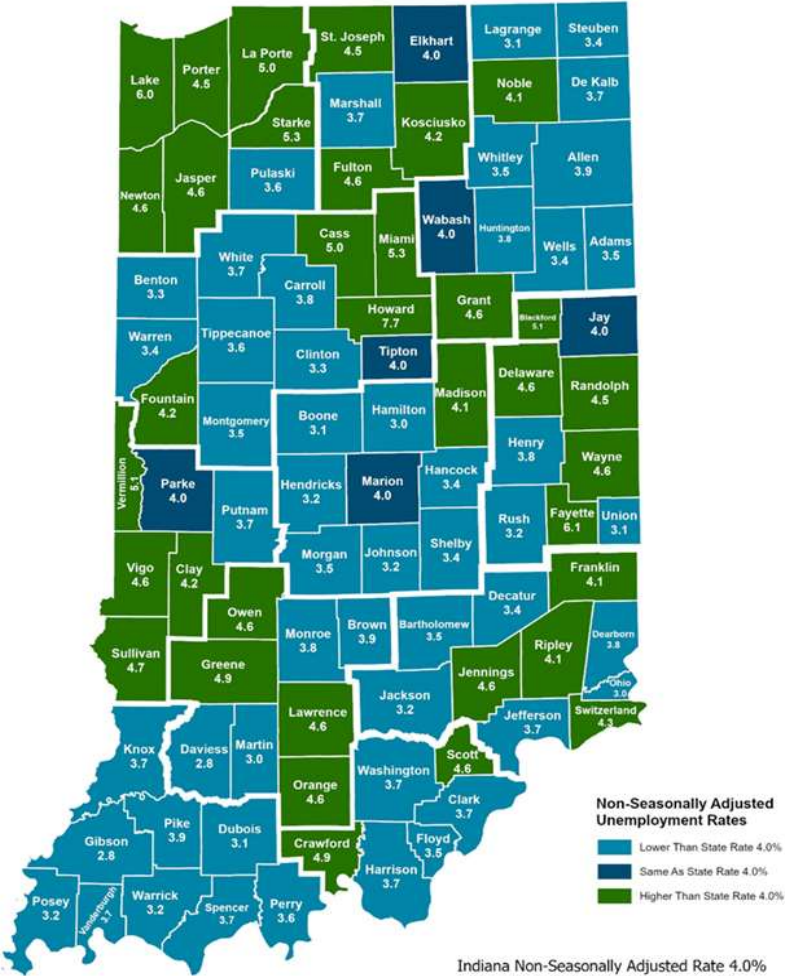


Potential Workers
(Unemployed and Seeking a Job + Not in the Labor Force but Want a Job/Available to Work Now)
187,901

More about the US Bureau of Labor Statistics data sources used within:
Local Area Unemployment Statistics (LAUS): Captures Indiana's labor force, which includes those currently employed and those who are unemployed and actively seeking work.
Current Population Survey (CPS): Captures individuals not participating in Indiana's Labor Force. This set includes non-participants that do not want a job (i.e. retirees and students) and those that want a job, but are not actively seeking work.
U.S. Census Bureau, Indiana Population 2023.

Resource: Notes on Using Current Population Survey (CPS) Subnational Data and Differences Between CPS and LAUS Estimates

County Unemployment Rates December 2024



**Non-Seasonally Adjusted
Unemployment Rates**

- Lower Than State Rate 4.0%
- Same As State Rate 4.0%
- Higher Than State Rate 4.0%

Indiana Non-Seasonally Adjusted Rate 4.0%
 Indiana Seasonally Adjusted Rate 4.5%
 Source: DWD, Local Area Unemployment Statistics



Questions?
 Please contact the DWD
 Research and Analysis
 Regional Labor Analyst
 listed below:

Jillian A. Gregory
 Regional Labor Analyst
 Research and Analysis
[Indiana Department of Workforce Development](https://www.in.gov/dwd/)
jgregory@dwd.in.gov