



HOOSIERS BY THE NUMBERS

Your premier source for labor market information for Indiana.

DWD

INDIANA DEPARTMENT OF
WORKFORCE
DEVELOPMENT

LABOR MARKET REVIEW



July 2024 Labor Market Review

Reported by: **Jillian Gregory**

Regional Workforce Analyst

[Email Jillian](#)

jgregory@dwd.in.gov

DWD

INDIANA DEPARTMENT OF
WORKFORCE
DEVELOPMENT

Economic Growth Region 9

Statistical Data Report for July 2024, Released September 2024

State Employment and Unemployment

Unemployment rates were higher in July in 13 states, lower in 1 state, and stable in 36 states and the District of Columbia, the U.S. Bureau of Labor Statistics reported. Twenty-eight states and the district had jobless rate increases from a year earlier, 2 states had decreases, and 20 states had little change. The national unemployment rate rose by 0.2 percentage point over the month to 4.3 percent and was 0.8 percentage point higher than in July 2023.

Nonfarm payroll employment increased in 2 states, decreased in 1 state, and was essentially unchanged in 47 states and the District of Columbia in July 2024. Over the year, nonfarm payroll employment increased in 28 states and was essentially unchanged in 22 states and the district.

South Dakota had the lowest jobless rate in July, 2.0 percent, closely followed by Vermont, 2.1 percent, and North Dakota, 2.2 percent. The rate in Mississippi, 2.7 percent, set a new series low. (All state series begin in 1976.) The District of Columbia had the highest unemployment rate, 5.5 percent, closely followed by Nevada, 5.4 percent. In total, 28 states had unemployment rates lower than the U.S. figure of 4.3 percent, 4 states and the district had higher rates, and 18 states had rates that were not appreciably different from that of the nation.



Economic Growth Region (EGR) 9

Bartholomew, Dearborn, Decatur, Franklin, Jackson, Jefferson, Jennings, Ohio, Ripley, and Switzerland Counties

July 2024 Labor Force Estimates (not seasonally adjusted)						
Area	Labor Force	Employed	Unemployed	Jul-24	Jun-24	Jul-23
U.S.	169,723,000	162,038,000	7,685,000	4.5%	4.3%	3.8%
IN	3,451,630	3,279,702	171,928	5.0%	4.4%	3.7%
EGR 9	170,371	162,915	7,456	4.4%	4.0%	3.2%
Columbus MSA	43,911	42,031	1,880	4.3%	3.9%	3.0%
Bartholomew Co.	43,911	42,031	1,880	4.3%	3.9%	3.0%
Dearborn Co.	26,654	25,454	1,200	4.5%	4.2%	3.5%
Decatur Co.	14,861	14,270	591	4.0%	3.6%	2.9%
Franklin Co.	11,138	10,646	492	4.4%	4.1%	3.4%
Jackson Co.	23,409	22,456	953	4.1%	3.8%	3.1%
Jefferson Co.	15,116	14,405	711	4.7%	4.2%	3.4%
Jennings Co.	14,010	13,408	602	4.3%	3.9%	3.3%
Ohio Co.	3,284	3,141	143	4.4%	4.0%	3.2%
Ripley Co.	13,193	12,547	646	4.9%	4.5%	3.7%
Switzerland Co.	4,795	4,557	238	5.0%	4.6%	3.3%
Batesville	3,433	3,279	154	4.5%	3.9%	2.7%
Brookville	1,061	1,014	47	4.4%	4.5%	3.8%
Columbus	25,152	24,032	1,120	4.5%	4.0%	3.0%
Greensburg	6,569	6,297	272	4.1%	3.7%	2.9%
Lawrenceburg	2,064	1,921	143	6.9%	5.9%	6.7%
Madison	5,463	5,204	259	4.7%	4.3%	3.4%
North Vernon	2,982	2,842	140	4.7%	4.2%	3.2%
Seymour	10,620	10,189	431	4.1%	3.7%	3.4%

Unemployment Rates by State (seasonally adjusted): July 2024

U.S. - 4.3%

Illinois - 5.2%

Indiana - 4%

Kentucky - 4.7%

Michigan - 4.4%

Ohio - 4.5%

Source: U.S. Department of Labor, Bureau of Labor Statistics

Unemployment Rank by County (of 92 counties): July 2024

#34 - Switzerland (5%)

#37 - Ripley (4.9%)

#46 - Jefferson (4.7%)

#57 - Dearborn (4.5%)

#60 - Franklin (4.4%)

#61 - Ohio (4.4%)

#65 - Bartholomew (4.3%)

#67 - Jennings (4.3%)

#75 - Jackson (4.1%)

#78 - Decatur (4%)

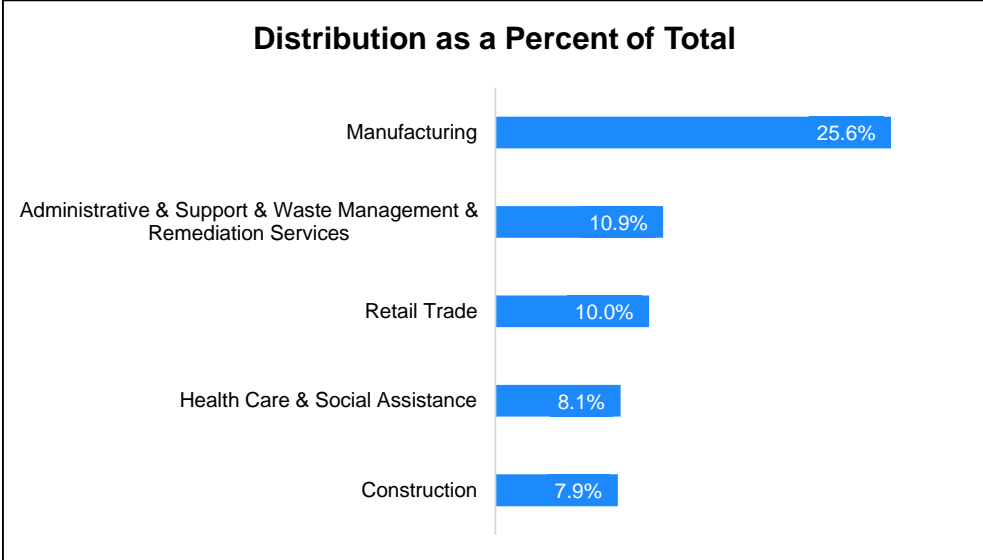
Source: Indiana Department of Workforce Development, Research and Development, Local Area Unemployment Statistics

Source: Indiana Department of Workforce Development, Research & Analysis, Local Area Unemployment Statistics | Unemployment Statistics Released: 08/24 | Notes: The data displayed are presented as estimates only. The most recent month's data are always preliminary and are revised when the next month's data are released.

Consumer Price Index (CPI-U Change), Unadjusted Percent Change to July 2024 from				
CPI Item	Jul-23	Jun-24	Jul-23	Jun-24
	U.S. City		Midwest Region*	
All Items	2.9%	0.1%	2.7%	0.5%
Food & Beverages	2.2%	0.2%	1.8%	0.4%
Housing	4.4%	0.3%	4.2%	0.6%
Apparel	0.2%	-1.6%	0.5%	-0.4%
Transportation	1.0%	-0.1%	0.4%	0.3%
Medical Care	3.2%	-0.2%	2.4%	0.2%
Recreation	1.4%	0.1%	1.5%	1.6%
Education & Communication	0.9%	0.2%	0.6%	0.3%
Other Goods & Services	4.2%	0.2%	6.7%	0.6%

*Midwest region = Midwest Urban Average. Midwest Region includes Illinois, Indiana, Iowa, Kansas, Michigan, Minnesota, Missouri, Nebraska, North Dakota, Ohio, South Dakota and Wisconsin | Source: U.S. Bureau of Labor Statistics

Percentage of Unemployment Claims for Top 5 Region 9 Industries July 2024



Source: Indiana Department of Workforce Development, Research and Analysis

WARN Notices

WARN Notices for Region 9 for July 2024				
Company	City	County	# of workers affected	Notice Date

There are no WARN Notices for July 2024 for EGR 9.

Source: Indiana Department of Workforce Development, WARN Notices | For information on WARN Act requirements, you may go to the U.S. Department of Labor Employment Training Administration Fact Sheet:

<https://www.doleta.gov/programs/factsht/warn.htm>

Unemployment Claims: July 2024

Region 9

Initial Claims

07/06/24 - 36(D)

07/13/24 - 74(D)

07/20/24 - 60(D)

07/27/24 - 51(D)

Continued Claims

07/06/24 - 516

07/13/24 - 548

07/20/24 - 534

07/27/24 - 512

Total Claims

07/06/24 - 552

07/13/24 - 622

07/20/24 - 594

07/27/24 - 563

State of Indiana

Initial Claims

07/06/24 - 5,729

07/13/24 - 4,322

07/20/24 - 3,045

07/27/24 - 2,733

Continued Claims

07/06/24 - 22,019

07/13/24 - 23,222

07/20/24 - 20,275

07/27/24 - 19,820

Total Claims

07/06/24 - 27,748

07/13/24 - 27,544

07/20/24 - 23,320

07/27/24 - 22,553

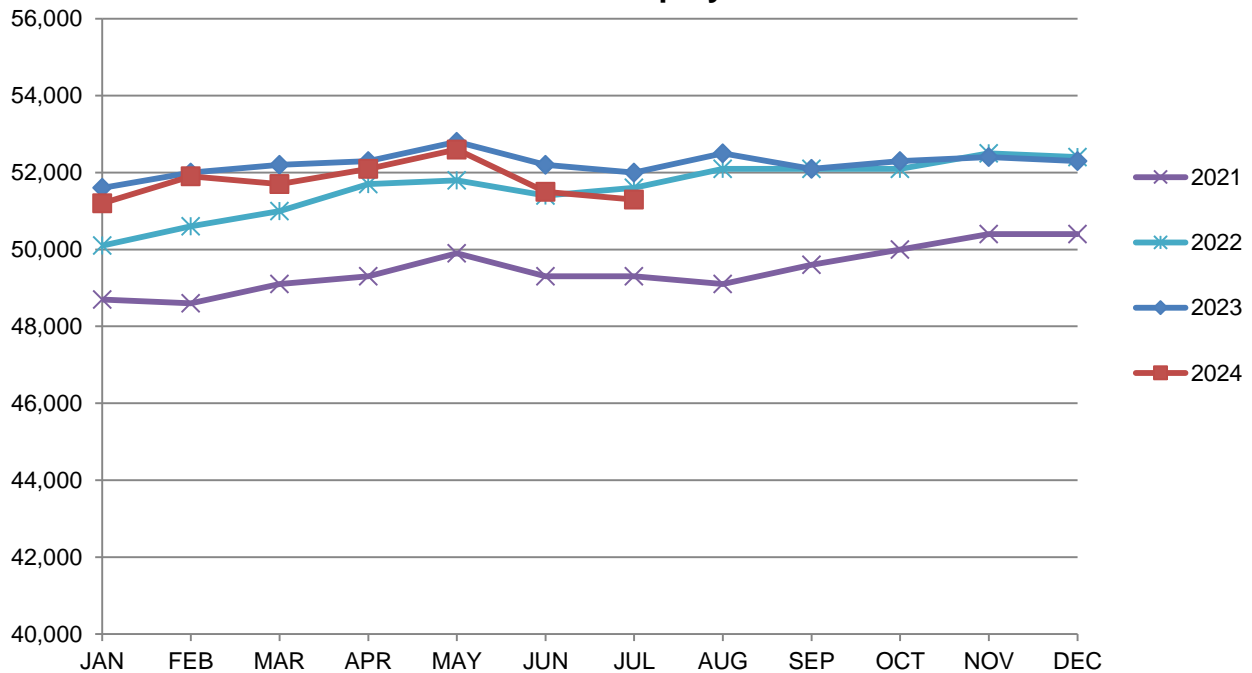
(D) indicates item is affected by non-disclosure issues relating to industry or ownership status |

*Numbers subject to weekly revision | Source: Indiana Department of Workforce Development, Research and Analysis

Columbus MSA							
Wage and Salaried Employment	July 2024			# Change	% Change	# Change	% Change
Industry	Jul-24	Jun-24	Jul-23	Jun-24 to Jul-24	Jul-23 to Jul-24	Jul-23 to Jul-24	Jul-23 to Jul-24
Total Nonfarm	51,300	51,500	52,000	-200	-0.4%	-700	-1.4%
Total Private	46,400	46,500	46,800	-100	-0.2%	-400	-0.9%
Goods Producing	21,200	21,400	21,600	-200	-0.9%	-400	-1.9%
Service-Providing	30,100	30,100	30,400	0	0.0%	-300	-1.0%
Private Service Providing	25,200	25,100	25,200	100	0.4%	0	0.0%
Mining, Logging and Construction	1,800	1,900	1,900	-100	-5.3%	-100	-5.3%
Manufacturing	19,400	19,500	19,700	-100	-0.5%	-300	-1.5%
Durable Goods	17,300	17,400	17,600	-100	-0.6%	-300	-1.7%
Trade, Transportation, and Utilities	7,500	7,500	7,600	0	0.0%	-100	-1.3%
Retail Trade	4,700	4,700	4,900	0	0.0%	-200	-4.1%
Information	300	300	300	0	0.0%	0	0.0%
Financial Activities	1,600	1,600	1,600	0	0.0%	0	0.0%
Professional and Business Services	5,100	5,000	5,200	100	2.0%	-100	-1.9%
Education and Health Services	4,800	4,800	4,700	0	0.0%	100	2.1%
Leisure and Hospitality	4,400	4,400	4,300	0	0.0%	100	2.3%
Other Services	1,500	1,500	1,500	0	0.0%	0	0.0%
Total Government	4,900	5,000	5,200	-100	-2.0%	-300	-5.8%
Federal Government	200	200	200	0	0.0%	0	0.0%
State Government	900	900	800	0	0.0%	100	12.5%
Local Government	3,800	3,900	4,200	-100	-2.6%	-400	-9.5%
Local Government Educational Services	1,200	1,300	1,200	-100	-7.7%	0	0.0%

Source: Indiana Dept of Workforce Development, Research and Analysis, Current Employment Statistics

Columbus MSA Employment Trends



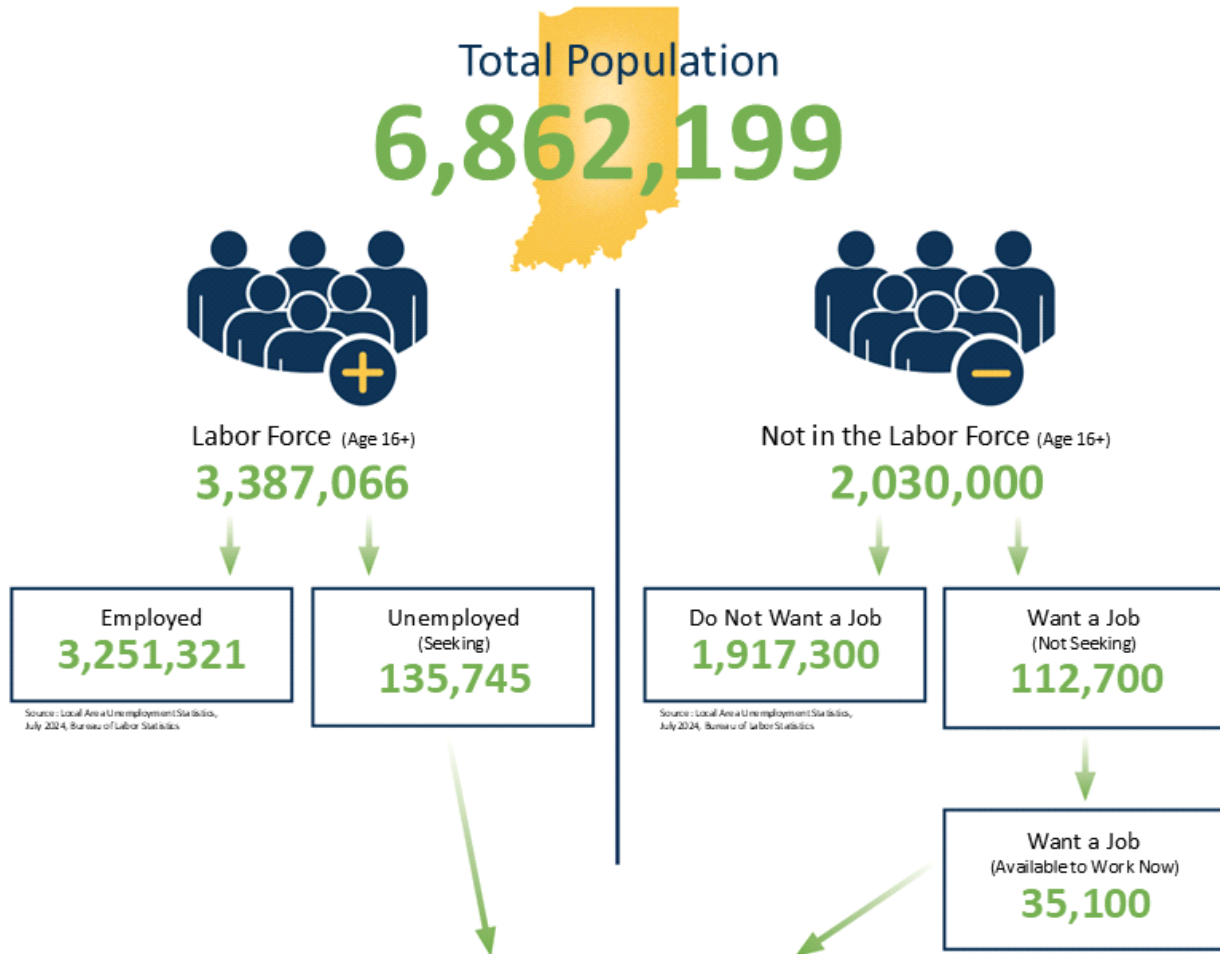
Source: Indiana Department of Workforce Development, Research & Analysis, Current Employment Statistics | Note: Historical data for the most recent 4 years (both seasonally adjusted and not seasonally adjusted) are revised near the beginning of each calendar year, prior to the release of January estimates for statewide data.

Frequently Listed Jobs	
Top 20 job listings in Region 9 in the past month	
Rank	Occupations
1	Personal Care Aides
2	Electrical Engineers
3	Industrial Engineers
4	Licensed Practical and Licensed Vocational Nurses
5	Mechanical Engineers
6	Nursing Assistants
7	Registered Nurses
8	Agricultural Equipment Operators
9	Computer Systems Analysts
10	Market Research Analysts and Marketing Specialists
11	Marketing Managers
12	News Analysts, Reporters, and Journalists
13	Production Workers, All Other
14	Career/Technical Education Teachers, Postsecondary
15	Cooks, Fast Food
16	Customer Service Representatives
17	Engine and Other Machine Assemblers
18	Facilities Managers
19	First-Line Supervisors of Food Preparation and Serving Workers
20	First-Line Supervisors of Mechanics, Installers, and Repairers

Applicant Pool	
Top 20 occupations desired by applicants on their resumes in the past 12 months	
Occupations	# of Applicants
Production Workers, All Other	371
Assemblers and Fabricators, All Other	280
Helpers--Production Workers	175
Customer Service Representatives	135
Laborers and Freight, Stock, and Material Movers, Hand	132
Heavy and Tractor-Trailer Truck Drivers	131
Cashiers	120
Industrial Truck and Tractor Operators	101
Construction Laborers	95
Extraction Workers, All Other	93
Office Clerks, General	92
Office and Administrative Support Workers, All Other	84
Managers, All Other	74
Retail Salespersons	70
First-Line Supervisors of Production and Operating Workers	69
Electrical and Electronic Equipment Assemblers	68
Inspectors, Testers, Sorters, Samplers, and Weighers	67
Construction and Related Workers, All Other	62
Carpenters	58
Team Assemblers	58

Source: Indiana Workforce Development, Indiana Career Connect. * Due to an upgrade in the reporting system, there is a notable change in Job Postings recorded. The tool used to measure Job Postings was upgraded to prevent malicious or false postings. While customers adjust to the enhancements a drop in the record is to be expected.

Source: Indiana Workforce Development, Indiana Career Connect



Potential Workers

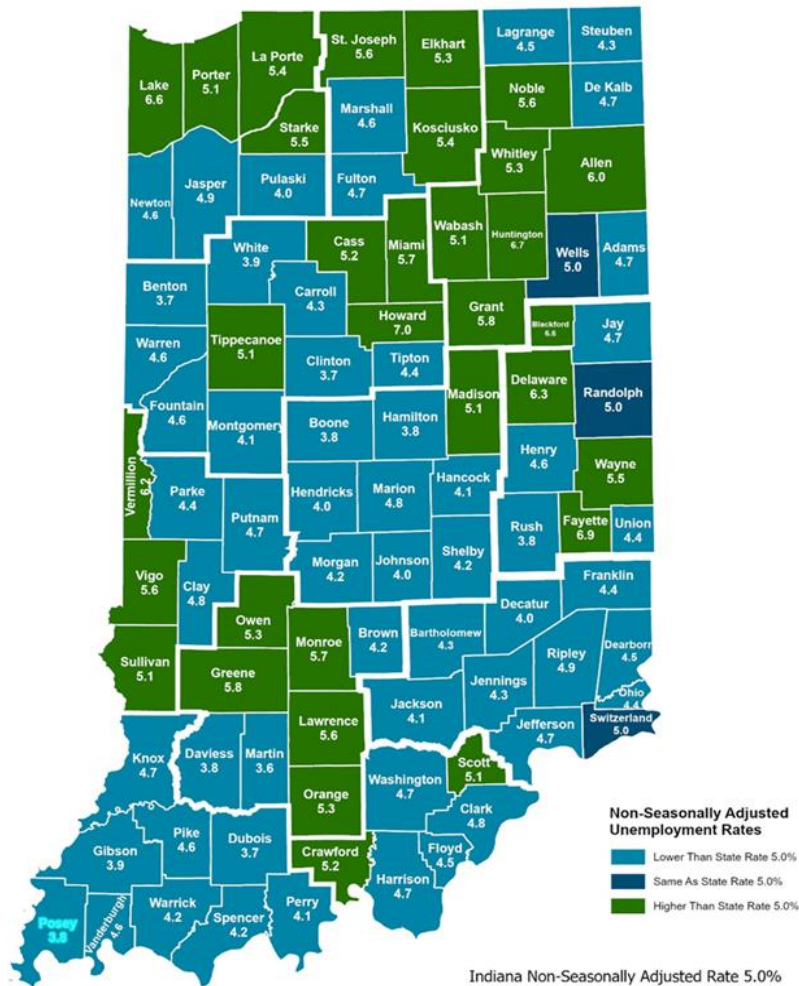
(Unemployed and Seeking a Job + Not in the Labor Force but Want a Job/Available to Work Now)

170,845

More about the US Bureau of Labor Statistics data sources used within:
Local Area Unemployment Statistics (LAUS): Captures Indiana's labor force, which includes those currently employed and those who are unemployed and actively seeking work.
Current Population Survey (CPS): Captures individuals not participating in Indiana's Labor Force. This set includes non-participants that do not want a job (i.e. retirees and students) and those that want a job, but are not actively seeking work.
U.S. Census Bureau, Indiana Population 2023.

Resource: Notes on Using Current Population Survey (CPS) Subnational Data and Differences Between CPS and LAUS Estimates

County Unemployment Rates July 2024



Indiana Non-Seasonally Adjusted Rate 5.0%
 Indiana Seasonally Adjusted Rate 4.0%
 Source: DWD, Local Area Unemployment Statistics



Questions?
 Please contact the DWD
 Research and Analysis
 Regional Labor Analyst
 listed below:

Jillian A. Gregory
 Regional Labor Analyst
 Research and Analysis
[Indiana Department of Workforce Development](https://www.in.gov/dwd/)
jgregory@dwd.in.gov