



HOOSIERS BY THE NUMBERS

Your premier source for labor market information for Indiana.

DWD

INDIANA DEPARTMENT OF
WORKFORCE
DEVELOPMENT

LABOR MARKET REVIEW



April 2024
Labor Market Review

Reported by: Jillian Gregory

Regional Workforce Analyst

[Email Jillian](#)

jgregory@dwd.in.gov

DWD

INDIANA DEPARTMENT OF
WORKFORCE
DEVELOPMENT

Economic Growth Region 9

Statistical Data Report for April 2024, Released June 2024

State Employment and Unemployment

Unemployment rates were lower in April in 5 states, higher in 2 states, and stable in 43 states and the District of Columbia, the U.S. Bureau of Labor Statistics reported. Thirty states had jobless rate increases from a year earlier, 1 state had a decrease, and 19 states and the district had little change. The national unemployment rate changed little at 3.9 percent but was 0.5 percentage point higher than in April 2023.

North Dakota and South Dakota had the lowest jobless rates in April, 2.0 percent each. The next lowest rate was in Vermont, 2.1 percent. The rate in Mississippi, 2.8 percent, set a new series low. (All state series begin in 1976.) California had the highest unemployment rate, 5.3 percent, closely followed by the District of Columbia, 5.2 percent, and Nevada, 5.1 percent. In total, 24 states had unemployment rates lower than the U.S. figure of 3.9 percent, 5 states and the district had higher rates, and 21 states had rates that were not appreciably different from that of the nation. (See tables A and 1.)

Five states had unemployment rate decreases in April: Arizona, Maine, Mississippi, and Montana (-0.2 percentage point each) and Virginia (-0.1 point). Florida and Maryland had the only rate increases (+0.1 percentage point each). Forty-three states and the district of Columbia had jobless rates that were not notably different from those of a month earlier, though some had changes that were at least as large numerically as the significant changes.



Economic Growth Region (EGR) 9

Bartholomew, Dearborn, Decatur, Franklin, Jackson, Jefferson, Jennings, Ohio, Ripley, and Switzerland Counties

April 2024 Labor Force Estimates (not seasonally adjusted)						
Area	Labor Force	Employed	Unemployed	Apr-24	Mar-24	Apr-23
U.S.	167,484,000	161,590,000	5,894,000	3.5%	3.9%	3.1%
IN	3,383,458	3,267,750	115,708	3.4%	4.1%	2.7%
EGR 9	165,988	160,744	5,244	3.2%	3.9%	2.5%
Columbus MSA	43,511	42,241	1,270	2.9%	3.6%	2.3%
Bartholomew Co.	43,511	42,241	1,270	2.9%	3.6%	2.3%
Dearborn Co.	25,852	24,973	879	3.4%	4.0%	2.8%
Decatur Co.	14,332	13,913	419	2.9%	3.6%	2.2%
Franklin Co.	10,933	10,582	351	3.2%	4.4%	2.5%
Jackson Co.	22,374	21,742	632	2.8%	3.4%	2.4%
Jefferson Co.	15,216	14,732	484	3.2%	3.8%	2.7%
Jennings Co.	13,628	13,158	470	3.4%	4.3%	2.9%
Ohio Co.	3,209	3,105	104	3.2%	3.8%	2.5%
Ripley Co.	12,422	11,950	472	3.8%	4.7%	2.8%
Switzerland Co.	4,511	4,348	163	3.6%	4.3%	2.7%
Batesville	3,253	3,158	95	2.9%	3.7%	2.6%
Brookville	1,048	1,008	40	3.8%	5.8%	3.1%
Columbus	24,886	24,152	734	2.9%	3.6%	2.4%
Greensburg	6,331	6,139	192	3.0%	3.7%	2.4%
Lawrenceburg	1,955	1,885	70	3.6%	4.2%	5.1%
Madison	5,486	5,323	163	3.0%	3.6%	2.6%
North Vernon	2,892	2,789	103	3.6%	4.6%	3.1%
Seymour	10,144	9,865	279	2.8%	3.3%	2.4%

Unemployment Rates by State (seasonally adjusted): April 2024

U.S. - 3.9%

Illinois - 4.8%

Indiana - 3.6%

Kentucky - 4.6%

Michigan - 3.9%

Ohio - 4%

Source: U.S. Department of Labor, Bureau of Labor Statistics

Unemployment Rank by County (of 92 counties): April 2024

#19 - Ripley (3.8%)

#31 - Switzerland (3.6%)

#34 - Dearborn (3.4%)

#36 - Jennings (3.4%)

#43 - Franklin (3.2%)

#45 - Jefferson (3.2%)

#47 - Ohio (3.2%)

#63 - Bartholomew (2.9%)

#64 - Decatur (2.9%)

#76 - Jackson (2.8%)

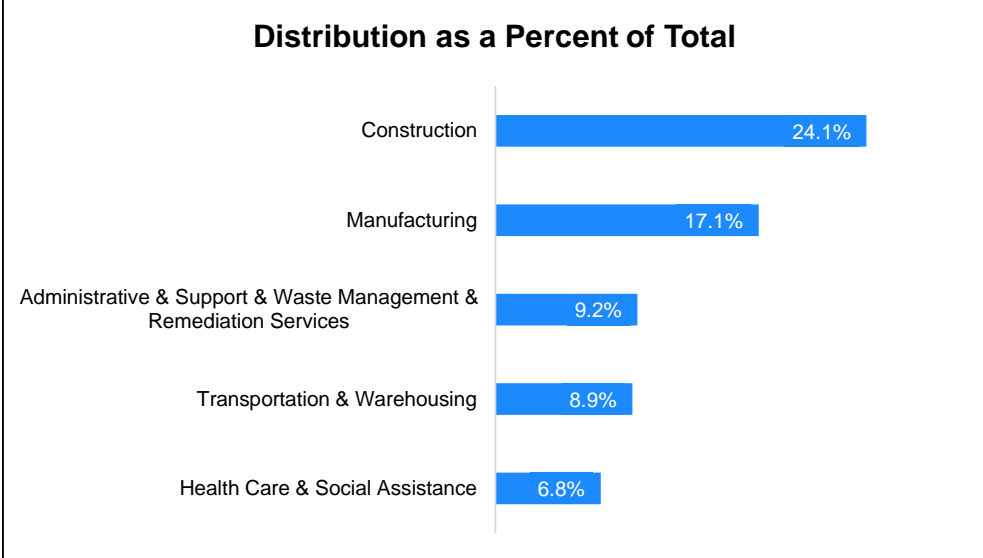
Source: Indiana Department of Workforce Development, Research and Development, Local Area Unemployment Statistics

Source: Indiana Department of Workforce Development, Research & Analysis, Local Area Unemployment Statistics | Unemployment Statistics Released: 05/24 | Notes: The data displayed are presented as estimates only. The most recent month's data are always preliminary and are revised when the next month's data are released.

Consumer Price Index (CPI-U Change), Unadjusted Percent Change to April 2024 from				
CPI Item	Apr-23	Mar-24	Apr-23	Mar-24
	U.S. City		Midwest Region*	
All Items	3.4%	0.4%	2.8%	0.5%
Food & Beverages	2.2%	0.2%	2.1%	0.1%
Housing	4.5%	0.1%	4.4%	0.5%
Apparel	1.3%	-0.1%	1.3%	0.1%
Transportation	3.5%	1.5%	1.0%	0.8%
Medical Care	2.6%	0.3%	2.1%	1.1%
Recreation	1.5%	0.2%	0.1%	-0.1%
Education & Communication	0.4%	0.1%	-0.2%	0.2%
Other Goods & Services	4.3%	0.5%	7.1%	0.9%

*Midwest region = Midwest Urban Average. Midwest Region includes Illinois, Indiana, Iowa, Kansas, Michigan, Minnesota, Missouri, Nebraska, North Dakota, Ohio, South Dakota and Wisconsin | Source: U.S. Bureau of Labor Statistics

Percentage of Unemployment Claims for Top 5 Region 9 Industries April 2024



Source: Indiana Department of Workforce Development, Research and Analysis

WARN Notices

WARN Notices for Region 9 for April 2024				
Company	City	County	# of workers affected	Notice Date

There are no WARN Notices for April 2024 for EGR 9.

Source: Indiana Department of Workforce Development, WARN Notices | For information on WARN Act requirements, you may go to the U.S. Department of Labor Employment Training Administration Fact Sheet:

<https://www.dolela.gov/programs/factsheet/warn.htm>

Unemployment Claims: April 2024

Region 9

Initial Claims

04/06/24 - 32(D)

04/13/24 - 40(D)

04/20/24 - 31(D)

04/27/24 - 41(D)

Continued Claims

04/06/24 - 588

04/13/24 - 559

04/20/24 - 476

04/27/24 - 436

Total Claims

04/06/24 - 620

04/13/24 - 599

04/20/24 - 507

04/27/24 - 477

State of Indiana

Initial Claims

04/06/24 - 2,643

04/13/24 - 3,083

04/20/24 - 2,453

04/27/24 - 2,344

Continued Claims

04/06/24 - 23,195

04/13/24 - 21,745

04/20/24 - 20,331

04/27/24 - 19,795

Total Claims

04/06/24 - 25,838

04/13/24 - 24,828

04/20/24 - 22,784

04/27/24 - 22,139

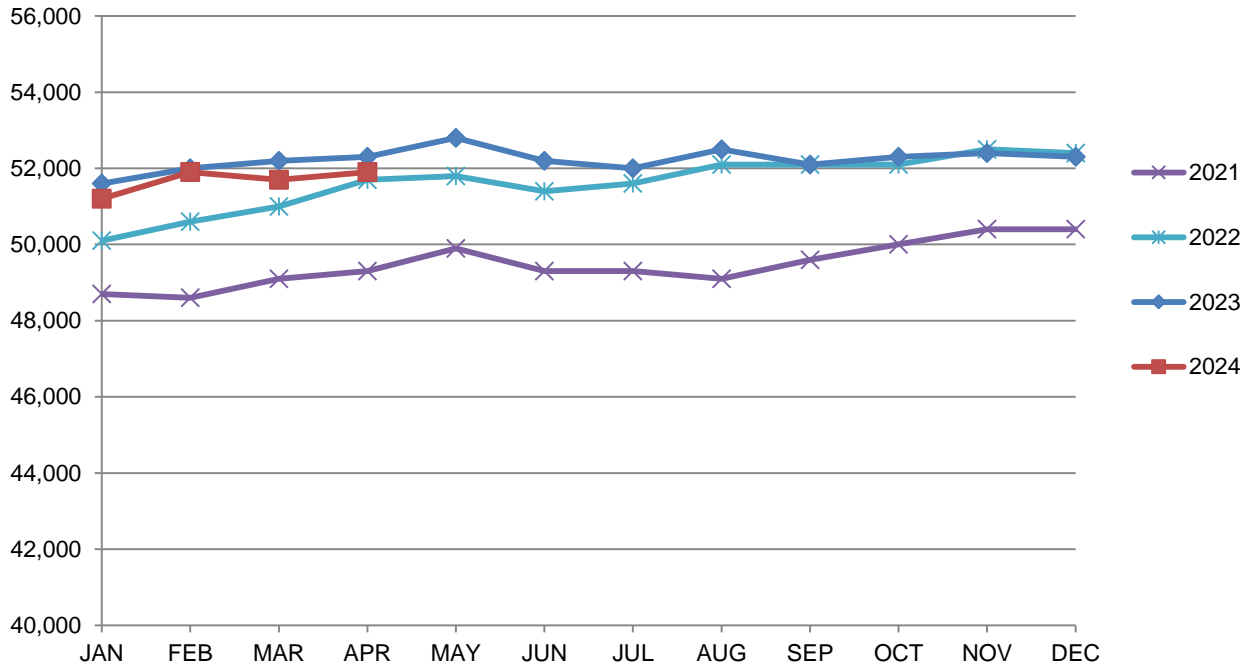
(D) indicates item is affected by non-disclosure issues relating to industry or ownership status |

*Numbers subject to weekly revision | Source: Indiana Department of Workforce Development, Research and Analysis

Columbus MSA							
Wage and Salaried Employment	April 2024			# Change	% Change	# Change	% Change
Industry	Apr-24	Mar-24	Apr-23	Mar-24 to Apr-24		Apr-23 to Apr-24	
Total Nonfarm	51,900	51,700	52,300	200	0.4%	-400	-0.8%
Total Private	45,600	45,500	46,200	100	0.2%	-600	-1.3%
Goods Producing	21,000	21,000	21,300	0	0.0%	-300	-1.4%
Service-Providing	30,900	30,700	31,000	200	0.7%	-100	-0.3%
Private Service Providing	24,600	24,500	24,900	100	0.4%	-300	-1.2%
Mining, Logging and Construction	1,700	1,700	1,900	0	0.0%	-200	-10.5%
Manufacturing	19,300	19,300	19,400	0	0.0%	-100	-0.5%
Durable Goods	17,300	17,200	17,300	100	0.6%	0	0.0%
Trade, Transportation, and Utilities	7,300	7,400	7,500	-100	-1.4%	-200	-2.7%
Retail Trade	4,700	4,700	4,700	0	0.0%	0	0.0%
Information	300	300	300	0	0.0%	0	0.0%
Financial Activities	1,600	1,600	1,500	0	0.0%	100	6.7%
Professional and Business Services	5,000	4,900	5,400	100	2.0%	-400	-7.4%
Education and Health Services	4,800	4,800	4,700	0	0.0%	100	2.1%
Leisure and Hospitality	4,200	4,100	4,100	100	2.4%	100	2.4%
Other Services	1,400	1,400	1,400	0	0.0%	0	0.0%
Total Government	6,300	6,200	6,100	100	1.6%	200	3.3%
Federal Government	200	200	200	0	0.0%	0	0.0%
State Government	900	900	900	0	0.0%	0	0.0%
Local Government	5,200	5,100	5,000	100	2.0%	200	4.0%
Local Government Educational Services	2,100	2,100	2,100	0	0.0%	0	0.0%

Source: Indiana Dept of Workforce Development, Research and Analysis, Current Employment Statistics

Columbus MSA Employment Trends



Source: Indiana Department of Workforce Development, Research & Analysis, Current Employment Statistics | *Note:* Historical data for the most recent 4 years (both seasonally adjusted and not seasonally adjusted) are revised near the beginning of each calendar year, prior to the release of January estimates for statewide data.

Frequently Listed Jobs	
Top 20 job listings in Region 9 in the past month	
Rank	Occupations
1	Registered Nurses
2	First-Line Supervisors of Production and Operating Workers
3	Nursing Assistants
4	Licensed Practical and Licensed Vocational Nurses
5	Maintenance and Repair Workers, General
6	Social and Human Service Assistants
7	Industrial Engineers
8	Data Scientists
9	Personal Care Aides
10	Industrial Machinery Mechanics
11	Merchandise Displayers and Window Trimmers
12	Physical Therapists
13	First-Line Supervisors of Housekeeping and Janitorial Workers
14	Industrial Truck and Tractor Operators
15	Customer Service Representatives
16	Psychiatric Technicians
17	Food Preparation Workers
18	Occupational Therapists
19	Compensation, Benefits, and Job Analysis Specialists
20	Farmworkers and Laborers, Crop, Nursery, and Greenhouse

Source: Indiana Workforce Development, Indiana Career Connect

Applicant Pool	
Top 20 occupations desired by applicants on their resumes in the past 12 months	
Occupations	# of Applicants
Production Workers, All Other	391
Assemblers and Fabricators, All Other	300
Helpers--Production Workers	180
Customer Service Representatives	138
Cashiers	136
Heavy and Tractor-Trailer Truck Drivers	127
Laborers and Freight, Stock, and Material Movers, Hand	127
Industrial Truck and Tractor Operators	106
Office Clerks, General	103
Construction Laborers	98
Extraction Workers, All Other	91
Office and Administrative Support Workers, All Other	88
First-Line Supervisors of Production and Operating Workers	81
Inspectors, Testers, Sorters, Samplers, and Weighers	74
Electrical and Electronic Equipment Assemblers	71
Managers, All Other	70
Retail Salespersons	70
Construction and Related Workers, All Other	68
Carpenters	65
Secretaries and Administrative Assistants, Except Legal, Medical, and Executive	64

Source: Indiana Workforce Development, Indiana Career Connect

Total Population

6,862,199



Labor Force (Age 16+)

3,378,923



Not in the Labor Force (Age 16+)

2,027,000

Employed
3,257,417

Source: Local Area Unemployment Statistics, April 2024, Bureau of Labor Statistics

Unemployed (Seeking)
121,506

Do Not Want a Job
1,914,800

Source: Local Area Unemployment Statistics, April 2024, Bureau of Labor Statistics

Want a Job (Not Seeking)
112,300

Want a Job (Available to Work Now)
32,000

Potential Workers

(Unemployed and Seeking a Job + Not in the Labor Force but Want a Job/Available to Work Now)

153,506

Note about the US Bureau of Labor Statistics data sources used within:
Local Area Unemployment Statistics (LAUS): Captures Indiana's labor force, which includes those currently employed and those who are unemployed and actively seeking work.
Current Population Survey (CPS): Captures individuals not participating in Indiana's Labor Force. This set includes non-participants that do not want a job (i.e. retirees and students) and those that want a job, but are not actively seeking work.
U.S. Census Bureau, Indiana Population, 2023.

Resource: Notes on Using Current Population Survey (CPS) Subnational Data and Differences Between CPS and LAUS Estimates

SNAPSHOT

April Indiana Employment

Released May 17, 2024



Unemployment Rate

**seasonally adjusted*

Unemployment Rate

3.6%



March 2024 Indiana

3.5%



National Unemployment Rate



LABOR FORCE PARTICIPATION RATE*

16+: **62.5%**

25-44: **81.4%**

25-54: **81.0%**



National Labor Force



Open Job Postings

102,684

Jobs

As of May 16, 2024



Weekly UI Continued Claims

20,331

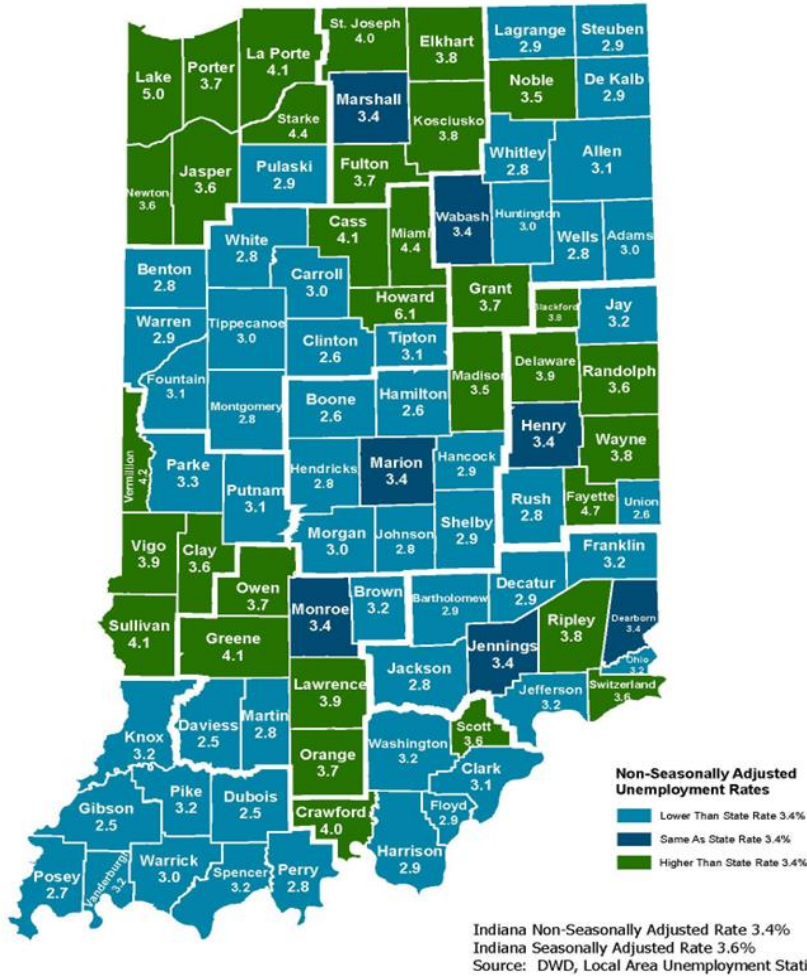


Filed Week Ending April 27, 2024

Source: Local Area Unemployment Statistics, Bureau of Labor Statistics; Indiana Career Connect

* The percentage of Hoosiers 16 and older who are either working or actively looking for work. Those not in the labor force include primarily, students, retirees and other non-working populations, such as individuals unable to work due to a disability or illness, or adults responsible for their family's childcare needs.

County Unemployment Rates April 2024



Questions?
 Please contact the DWD
 Research and Analysis
 Regional Labor Analyst
 listed below:

Jillian A. Gregory
 Regional Labor Analyst
 Research and Analysis
[Indiana Department of Workforce Development](https://www.in.gov/workforce)
jgregory@dwd.in.gov