



# HOOSIERS BY THE NUMBERS

Your premier source for labor market information for Indiana.



INDIANA  
DEPARTMENT OF  
**WORKFORCE**  
DEVELOPMENT

## LABOR MARKET REVIEW



## April 2021 Labor Market Review

Reported by: **Jillian Gregory**

Regional Workforce Analyst

[Email Jillian](#)

[jgregory@dwd.in.gov](mailto:jgregory@dwd.in.gov)

Tel: 812-537-2485



INDIANA  
DEPARTMENT OF  
**WORKFORCE**  
DEVELOPMENT

## LABOR MARKET REVIEW

# Economic Growth Region 9

Statistical Data Report for April 2021, Released June 2021

## State Employment and Unemployment

Unemployment rates were lower in April in 12 states and the District of Columbia and stable in 38 states, the U.S. Bureau of Labor Statistics reported. Forty-eight states and the District had jobless rate decreases from a year earlier and two states had little change. The national unemployment rate, 6.1 percent, was little changed over the month, but was 8.7 percentage points lower than in April 2020.

Hawaii had the highest unemployment rate in April, 8.5 percent, followed by California, 8.3 percent, and New Mexico and New York, 8.2 percent each. Nebraska, New Hampshire, South Dakota, and Utah had the lowest rates, 2.8 percent each. In total, 27 states had unemployment rates lower than the U.S. figure of 6.1 percent, 11 states and the District of Columbia had higher rates, and 12 states had rates that were not appreciably different from that of the nation.

In April, Rhode Island had the largest over-the-month unemployment rate decrease (-0.7 percentage point), followed by Hawaii (-0.6 point) and Virginia (-0.4 point). Thirty-eight states had jobless rates that were not notably different from those of a month earlier, though some had changes that were at least as large numerically as the significant changes.



## Economic Growth Region (EGR) 9

Bartholomew, Dearborn, Decatur, Franklin, Jackson, Jefferson, Jennings, Ohio, Ripley, and Switzerland Counties

April 2021 Labor Force Estimates (not seasonally adjusted)						
Area	Labor Force	Employed	Unemployed	Apr-21	Mar-21	Apr-20
U.S.	160,379,000	151,160,000	9,220,000	5.7%	6.2%	14.4%
IN	3,327,059	3,187,375	139,684	4.2%	4.6%	16.5%
EGR 9	169,490	163,705	5,785	3.4%	4.1%	19.5%
Columbus MSA	43,439	42,002	1,437	3.3%	3.8%	17.5%
Bartholomew Co.	43,439	42,002	1,437	3.3%	3.8%	17.5%
Dearborn Co.	25,094	24,212	882	3.5%	4.4%	17.2%
Decatur Co.	15,640	15,174	466	3.0%	3.8%	25.4%
Franklin Co.	11,185	10,833	352	3.1%	4.0%	17.1%
Jackson Co.	22,920	22,154	766	3.3%	3.9%	22.4%
Jefferson Co.	15,231	14,683	548	3.6%	4.2%	21.4%
Jennings Co.	13,631	13,025	606	4.4%	4.9%	22.4%
Ohio Co.	3,116	3,020	96	3.1%	4.0%	16.6%
Ripley Co.	14,274	13,845	429	3.0%	3.9%	16.9%
Switzerland Co.	4,960	4,757	203	4.1%	5.0%	17.9%
Batesville	3,641	3,525	116	3.2%	3.8%	18.2%
Brookville	1,081	1,033	48	4.4%	3.7%	23.3%
Columbus	24,826	24,008	818	3.3%	3.8%	17.3%
Greensburg	6,902	6,650	252	3.7%	4.1%	30.6%
Lawrenceburg	1,943	1,826	117	6.0%	5.8%	29.4%
Madison	5,540	5,323	217	3.9%	4.5%	23.2%
North Vernon	2,930	2,770	160	5.5%	5.6%	28.4%
Seymour	10,365	9,982	383	3.7%	4.2%	25.1%

## Unemployment Rates by State (seasonally adjusted): April 2021

U.S. - 6.1%

Illinois - 7.1%

Indiana - 3.9%

Kentucky - 4.7%

Michigan - 4.9%

Ohio - 4.7%

Source: U.S. Department of Labor, Bureau of Labor Statistics

## Unemployment Rank by County (of 92 counties): April 2021

#17 - Jennings(4.4%)

#28 - Switzerland(4.1%)

#41 - Jefferson(3.6%)

#44 - Dearborn(3.5%)

#49 - Bartholomew(3.3%)

#51 - Jackson(3.3%)

#61 - Franklin(3.1%)

#63 - Ohio(3.1%)

#65 - Decatur(3%)

#74 - Ripley(3%)

Source: Indiana Department of Workforce Development, Research and Development, Local Area Unemployment Statistics

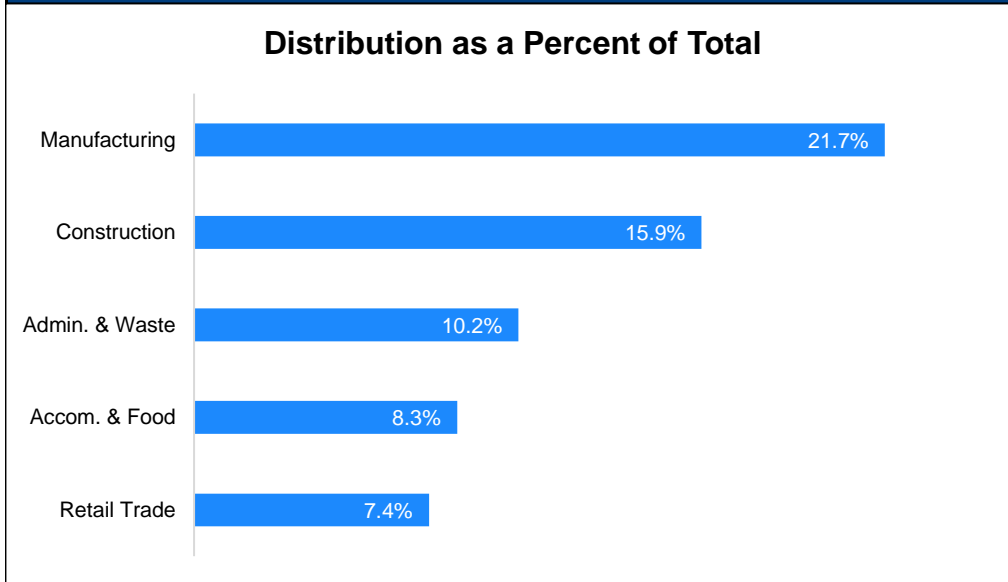
Source: Indiana Department of Workforce Development, Research & Analysis, Local Area Unemployment Statistics | Unemployment Statistics Released: 05/21 | Notes: The data displayed are presented as estimates only. The most recent month's data are always preliminary and are revised when the next month's data are released.

### Consumer Price Index (CPI-U Change), Unadjusted Percent Change to April 2021 from

CPI Item	Apr-20	Mar-21	Apr-20	Mar-21
	U.S. City		Midwest Region*	
<b>All Items</b>	<b>4.2%</b>	<b>0.8%</b>	<b>4.9%</b>	<b>0.8%</b>
Food & Beverages	2.3%	0.5%	2.1%	0.4%
Housing	2.6%	0.4%	3.4%	0.5%
Apparel	1.9%	-0.1%	1.7%	-0.9%
Transportation	14.9%	3.1%	17.8%	3.3%
Medical Care	1.5%	0%	1.9%	-0.4%
Recreation	2.1%	0.8%	2.7%	0.4%
Education & Communication	1.7%	0.3%	1.5%	-0.1%
Other Goods & Services	2.7%	0.2%	1.9%	0.4%

\*Midwest region = Midwest Urban Average. Midwest Region includes Illinois, Indiana, Iowa, Kansas, Michigan, Minnesota, Missouri, Nebraska, North Dakota, Ohio, South Dakota and Wisconsin | Source: U.S. Bureau of Labor Statistics

### Percentage of Unemployment Claims for Top 5 Region 9 Industries April 2021



Source: Indiana Department of Workforce Development, Research and Analysis

## WARN Notices

### WARN Notices for Region 9 for April 2021

Company	City	County	# of workers affected	Notice Date

**There are no WARN Notices for April 2021 for EGR 9.**

Source: Indiana Department of Workforce Development, WARN Notices | For information on WARN Act requirements, you may go to the U.S. Department of Labor Employment Training Administration Fact Sheet:

<https://www.doleta.gov/programs/factsht/warn.htm>

### Unemployment Claims: April 2021

#### Region 9

#### Initial Claims

04/03/21 - 539(D)  
04/10/21 - 2,983  
04/17/21 - 1,664  
04/24/21 - 726(D)

#### Continued Claims

04/03/21 - 1,512  
04/10/21 - 1,369  
04/17/21 - 1,351  
04/24/21 - 1,404

#### Total Claims

04/03/21 - 2,051  
04/10/21 - 4,352  
04/17/21 - 3,015  
04/24/21 - 2,130

#### State of Indiana

#### Initial Claims

04/03/21 - 8,071  
04/10/21 - 9,542  
04/17/21 - 14,026  
04/24/21 - 14,507

#### Continued Claims

04/03/21 - 57,103  
04/10/21 - 58,333  
04/17/21 - 59,616  
04/24/21 - 64,342

#### Total Claims

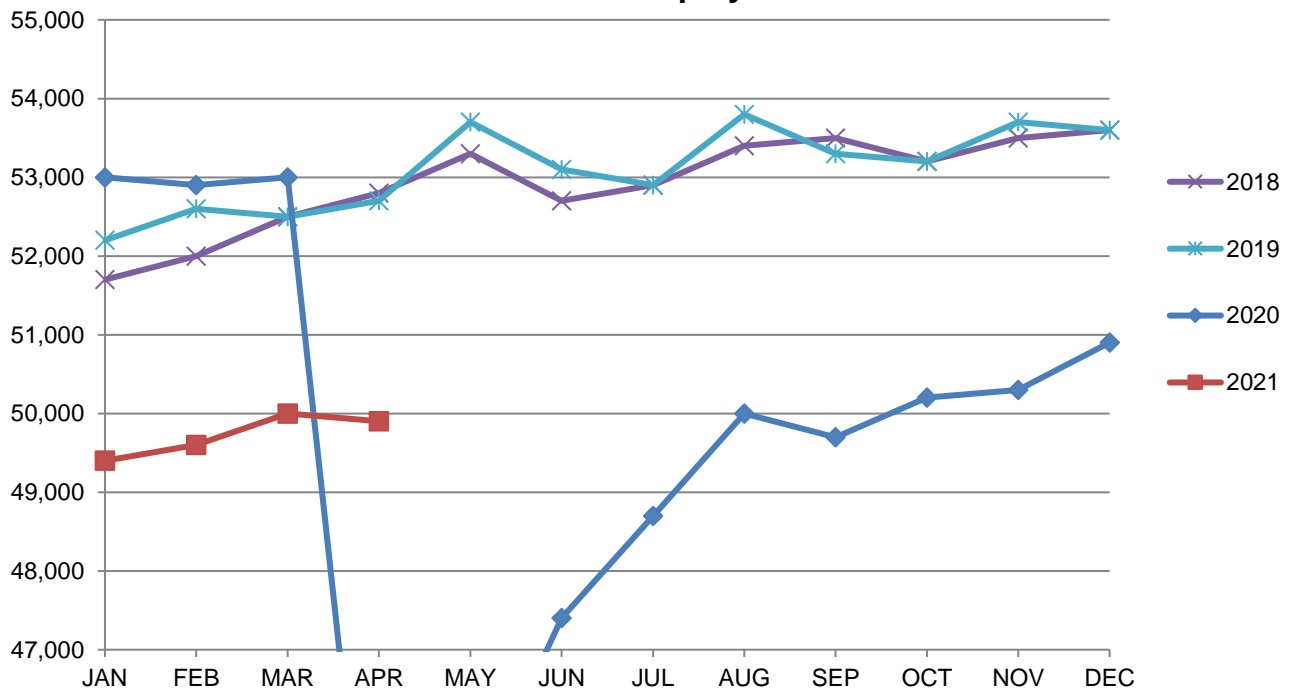
04/03/21 - 65,174  
04/10/21 - 67,875  
04/17/21 - 73,642  
04/24/21 - 78,849

(D) indicates item is affected by non-disclosure issues relating to industry or ownership status | Source: Indiana Department of Workforce Development, Research and Development

Columbus MSA							
Wage and Salaried Employment	April 2021			# Change	% Change	# Change	% Change
Industry	Apr-21	Mar-21	Apr-20	Mar-21 to Apr-21	Apr-20 to Apr-21	Apr-20 to Apr-21	Apr-20 to Apr-21
<b>Total Nonfarm</b>	<b>49,900</b>	<b>50,000</b>	<b>42,400</b>	<b>-100</b>	<b>-0.2%</b>	<b>7,500</b>	<b>17.7%</b>
<b>Total Private</b>	<b>43,900</b>	<b>44,100</b>	<b>36,400</b>	<b>-200</b>	<b>-0.5%</b>	<b>7,500</b>	<b>20.6%</b>
Goods Producing	20,600	20,800	16,700	-200	-1.0%	3,900	23.4%
Service-Providing	29,300	29,200	25,700	100	0.3%	3,600	14.0%
Private Service Providing	23,300	23,300	19,700	0	0.0%	3,600	18.3%
Mining, Logging and Construction	1,700	1,700	1,500	0	0.0%	200	13.3%
Manufacturing	18,900	19,100	15,200	-200	-1.1%	3,700	24.3%
Durable Goods	16,800	16,800	13,300	0	0.0%	3,500	26.3%
Trade, Transportation, and Utilities	7,300	7,200	6,600	100	1.4%	700	10.6%
Retail Trade	4,500	4,500	3,900	0	0.0%	600	15.4%
Information	300	300	300	0	0.0%	0	0.0%
Financial Activities	1,500	1,500	1,500	0	0.0%	0	0.0%
Professional and Business Services	4,900	5,000	3,900	-100	-2.0%	1,000	25.6%
Education and Health Services	4,300	4,300	4,000	0	0.0%	300	7.5%
Leisure and Hospitality	3,600	3,600	2,300	0	0.0%	1,300	56.5%
Other Services	1,400	1,400	1,100	0	0.0%	300	27.3%
<b>Total Government</b>	<b>6,000</b>	<b>5,900</b>	<b>6,000</b>	<b>100</b>	<b>1.7%</b>	<b>0</b>	<b>0.0%</b>
Federal Government	200	200	200	0	0.0%	0	0.0%
State Government	900	900	900	0	0.0%	0	0.0%
Local Government	4,900	4,800	4,900	100	2.1%	0	0.0%
Local Government Educational Services	1,700	1,900	1,800	-200	-10.5%	-100	-5.6%

Source: Indiana Dept of Workforce Development, Research and Analysis, Current Employment Statistics

### Columbus MSA Employment Trends



Source: Indiana Department of Workforce Development, Research & Analysis, Current Employment Statistics | Note: Historical data for the most recent 4 years (both seasonally adjusted and not seasonally adjusted) are revised near the beginning of each calendar year, prior to the release of January estimates for statewide data.

<b>Frequently Listed Jobs</b>	
<b>Top 20 job listings in Region 9 in the past month</b>	
<b>Rank</b>	<b>Occupations</b>
1	Social and Human Service Assistants
2	Production Workers, All Other
3	Laborers and Freight, Stock, and Material Movers, Hand
4	Security Guards
5	Registered Nurses
6	Customer Service Representatives
7	Merchandise Displayers and Window Trimmers
8	Personal Care Aides
9	Licensed Practical and Licensed Vocational Nurses
10	Nursing Assistants
11	Maintenance and Repair Workers, General
12	Home Health Aides
13	Industrial Engineers
14	Inspectors, Testers, Sorters, Samplers, and Weighers
15	First-Line Supervisors of Production and Operating Workers
16	Maids and Housekeeping Cleaners
17	Mechanical Engineers
18	Electrical and Electronics Repairers, Commercial and Industrial Equipment
19	Electrical Engineers
20	Mental Health and Substance Abuse Social Workers

Source: Indiana Workforce Development, Indiana Career Connect

<b>Applicant Pool</b>	
<b>Top 20 occupations desired by applicants on their resumes in the past 12 months</b>	
<b>Occupations</b>	<b># of applicants</b>
Production Workers, All Other	2,246
Assemblers and Fabricators, All Other	1,827
Helpers--Production Workers	1,167
Laborers and Freight, Stock, and Material Movers, Hand	691
Cashiers	689
Customer Service Representatives	550
Industrial Truck and Tractor Operators	537
Office Clerks, General	531
Stock Clerks and Order Fillers	468
Managers, All Other	441
Inspectors, Testers, Sorters, Samplers, and Weighers	432
Office and Administrative Support Workers, All Other	431
First-Line Supervisors of Production and Operating Workers	404
Electrical and Electronic Equipment Assemblers	384
Extraction Workers, All Other	377
Welders, Cutters, Solderers, and Brazers	374
Packers and Packagers, Hand	370
Nursing Assistants	351
Retail Salespersons	350
Team Assemblers	350

Source: Indiana Workforce Development, Indiana Career Connect

# Census results: Indiana adds nearly 302,000 new residents since 2010



A publication of the Indiana Business Research Center at Indiana University's Kelley School of Business.

**Matt Kinghorn**

Senior Demographic Analyst, Indiana Business Research Center, Indiana University Kelley School of Business

The U.S. Census Bureau recently released its first results from the 2020 U.S. Census, and revealed that Indiana added 301,726 residents since the last census was taken in 2010—a 4.7% increase. Indiana's official population count was 6,785,528 as of April 1, 2020.

This once-a-decade head count shows that Indiana's numeric change over the past 10 years was roughly 25% lower than its population growth between 2000 and 2010, and was the third-lowest gain between censuses since 1940.

In terms of the pace of change, Indiana's 4.7% increase marks the state's second-lowest growth rate over a decade, with only the 1% uptick during the 1980s coming in at a lower level. This slowdown is not unique to Indiana, however, as the U.S. as a whole posted its lowest growth rate since the Great Depression.

Indiana's slower rate of growth since 2010 appears to be driven largely by a decline in natural increase (i.e., the difference between the numbers of births and deaths). According to the Census Bureau's population estimates program, Indiana had an average annual natural increase of nearly 32,200 residents per year during the 2000s, but that measure dropped to 20,400 over the past decade.

With an aging population, the state was bound to see somewhat lower levels of natural increase, but shifts in both mortality rates and especially fertility rates<sup>1</sup> in recent years have triggered a steeper decline than would have seemed likely a decade ago.

Looking around the country, most of the nation's fastest-growing states are found in the West and the South led by Utah (18.4%), Idaho (17.3%) and Texas (15.9%). Among neighboring states, Indiana's growth rate outpaced Illinois (-0.1%), Kentucky (3.8%), Michigan (2.0%) and Ohio (2.3%). The state's rate of change ranked 29th-fastest nationally. Three states lost population over the decade, with West Virginia showing the greatest decline at -3.2%.

Indiana's population growth was strong enough to ensure that the state retained its nine seats in the U.S. House of Representatives. Indiana's allotment of U.S. representatives was 13 in 1920 but the state lost seats following the censuses of 1930, 1940, 1980 and 2000. Indiana has roughly 754,476 residents for each representative, up from 722,398 in 2010. The United States has an average of 761,169 people per representative in 2020.

In all, seven of the nation's 435 congressional seats will be reassigned based on the Census data. Neighboring Illinois, Michigan and Ohio are among the states to lose representation. Meanwhile, six states will pick up at least one seat, with Texas being the lone state to add two new representatives.

With 39.5 million residents, California is the most populous state in the country followed by Texas, Florida, New York and Pennsylvania. Indiana is the nation's 17th most populous state.

## Watch for more Census releases later this year

The Census Bureau will issue several more data releases from the 2020 Census over the coming months. These releases will provide an in-depth look at the characteristics of the U.S. population in great geographic detail.



# County Unemployment Rates April 2021



INDIANA  
DEPARTMENT OF  
**WORKFORCE**  
DEVELOPMENT

## Questions?

Please contact the DWD  
Research and Analysis  
Regional Labor Analyst  
listed below:

Jillian A. Gregory  
Regional Workforce Analyst

Research and Analysis

[Indiana Department of  
Workforce Development](http://www.in.gov/workforce)

500 Industrial Drive

Lawrenceburg, IN 47025

812-537-2485

[jgregory@dwd.in.gov](mailto:jgregory@dwd.in.gov)

