



# HOOSIERS BY THE NUMBERS

Your premier source for labor market information for Indiana.

## DWD

INDIANA DEPARTMENT OF  
**WORKFORCE**  
DEVELOPMENT

LABOR MARKET REVIEW



## March 2026 Labor Market Review

Reported by: Cassie Janes

Regional Workforce Analyst

[Email Cassie](mailto:cjanes@dwd.in.gov)

[cjanes@dwd.in.gov](mailto:cjanes@dwd.in.gov)



INDIANA DEPARTMENT OF  
**WORKFORCE**  
DEVELOPMENT

# Economic Growth Region 8

Statistical Data Report for March 2026, Released May 2026

## State Employment and Unemployment

Unemployment rates were little changed in March in all 50 states and the District of Columbia, the U.S. Bureau of Labor Statistics reported. Fourteen states had jobless rate increases from a year earlier, 2 states had decreases, and 34 states and the District had little change. The national unemployment rate, 4.3 percent, changed little over the month and from March 2025.

In March 2026, nonfarm payroll employment increased in 3 states and was essentially unchanged in 47 states and the District of Columbia. Over the year, nonfarm payroll employment decreased in 3 states and the District, increased in 3 states, and was essentially unchanged in 44 states.

South Dakota had the lowest jobless rate in March, 2.3 percent, followed by Hawaii, 2.4 percent, and North Dakota, 2.5 percent. The District of Columbia had the highest unemployment rate, 6.3 percent. The next highest rate was in Delaware, 5.4 percent, followed by California and Nevada, 5.3 percent each. In total, 17 states had unemployment rates lower than the U.S. figure of 4.3 percent, 8 states and the District had higher rates, and 25 states had rates that were not appreciably different.



### Economic Growth Region (EGR) 8

Brown, Daviess, Greene, Lawrence, Martin, Monroe, Orange and Owen Counties

#### Unemployment Rates by State (seasonally adjusted): March 2026

**U.S. - 4.3%**

Illinois - 5.1%

**Indiana - 3.3%**

Kentucky - 4.2%

Michigan - 5%

Ohio - 4.1%

Source: U.S. Department of Labor, Bureau of Labor Statistics

#### Unemployment Rank by County (of 92 counties): March 2026

#32 - Greene (3.5%)

#35 - Orange (3.5%)

#39 - Brown (3.4%)

#43 - Lawrence (3.4%)

#46 - Owen (3.4%)

#57 - Monroe (3.3%)

#77 - Daviess (3%)

#80 - Martin (3%)

Source: Indiana Department of Workforce Development, Research and Development, Local Area Unemployment Statistics

March 2026 Labor Force Estimates (not seasonally adjusted)						
Area	Labor Force	Employed	Unemployed	Mar-26	Feb-26	Mar-25
U.S.	170,102,000	162,764,000	7,337,000	4.3%	4.7%	4.2%
IN	3,470,481	3,346,967	123,514	3.6%	3.8%	3.8%
EGR 8	161,791	156,397	5,394	3.3%	3.6%	3.5%
Bloomington MSA	86,279	83,400	2,879	3.3%	3.5%	3.4%
Brown Co.	7,778	7,514	264	3.4%	3.8%	3.7%
Daviess Co.	16,169	15,681	488	3.0%	3.3%	2.8%
Greene Co.	14,590	14,074	516	3.5%	4.2%	3.9%
Lawrence Co.	22,412	21,649	763	3.4%	3.8%	3.7%
Martin Co.	5,156	5,001	155	3.0%	3.3%	3.0%
Monroe Co.	75,526	73,009	2,517	3.3%	3.4%	3.3%
Orange Co.	9,407	9,078	329	3.5%	3.8%	4.0%
Owen Co.	10,753	10,391	362	3.4%	3.7%	3.9%
Bloomington	42,644	41,115	1,529	3.6%	3.6%	3.6%

Source: Indiana Department of Workforce Development, Research & Analysis, Local Area Unemployment Statistics | Unemployment Statistics Released: 05/26 | Notes: The data displayed are presented as estimates only. The most recent month's data are always preliminary and are revised when the next month's data are released.

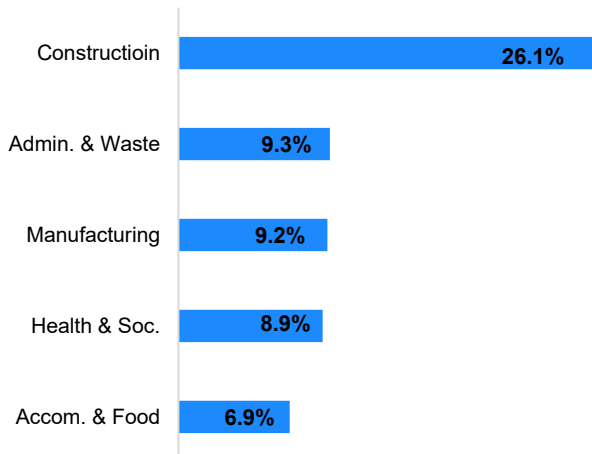
### Consumer Price Index (CPI-U Change), Unadjusted Percent Change to March 2026 from

CPI Item	Mar-25	Feb-26	Mar-25	Feb-26
	U.S. City		Midwest Region*	
<b>All Items</b>	<b>3.3%</b>	<b>1.0%</b>	<b>3.4%</b>	<b>0.9%</b>
Food & Beverages	2.6%	0.1%	2.3%	0.0%
Housing	3.4%	0.4%	4.0%	-0.1%
Apparel	3.4%	1.8%	3.6%	0.9%
Transportation	5.0%	5.1%	3.8%	5.4%
Medical Care	3.1%	-0.1%	3.9%	0.1%
Recreation	2.2%	-0.1%	4.3%	0.5%
Education & Communication	0.0%	0.1%	-0.2%	0.0%
Other Goods & Services	3.8%	-0.3%	2.3%	0.7%

\*Midwest region = Midwest Urban Average. Midwest Region includes Illinois, Indiana, Iowa, Kansas, Michigan, Minnesota, Missouri, Nebraska, North Dakota, Ohio, South Dakota and Wisconsin | Source: U.S. Bureau of Labor Statistics

### Percentage of Unemployment Claims for Top 5 Region 8 Industries March 2026

#### Distribution as a Percent of Total



Source: Indiana Department of Workforce Development, Research and Analysis

### WARN Notices

#### WARN Notices for Region 8 for March 2026

Company	City	County	# of workers affected	Notice Date

**There are no WARN Notices for March 2026 for EGR 8.**

Source: Indiana Department of Workforce Development, WARN Notices | For information on WARN Act requirements, you may go to the U.S. Department of Labor Employment Training Administration Fact Sheet:

<https://www.doleta.gov/programs/factsht/warn.htm>

### Unemployment Claims: March 2026

#### Region 8

##### Initial Claims

03/07/26 - 40(D)

03/14/26 - 50(D)

03/21/26 - 33(D)

03/28/26 - 40(D)

##### Continued Claims

03/07/26 - 753

03/14/26 - 700

03/21/26 - 633

03/28/26 - 615

##### Total Claims

03/07/26 - 793

03/14/26 - 750

03/21/26 - 666

03/28/26 - 655

#### State of Indiana

##### Initial Claims

03/07/26 - 2,586

03/14/26 - 2,608

03/21/26 - 2,418

03/28/26 - 2,279

##### Continued Claims

03/07/26 - 23,875

03/14/26 - 22,954

03/21/26 - 21,974

03/28/26 - 20,972

##### Total Claims

03/07/26 - 26,461

03/14/26 - 25,562

03/21/26 - 24,392

03/28/26 - 23,251

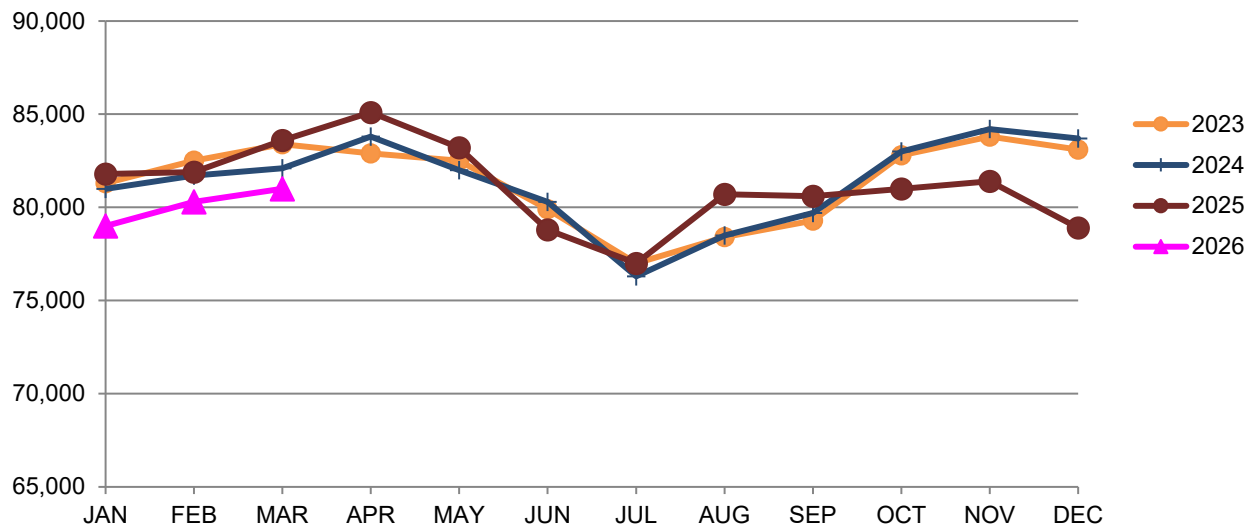
(D) indicates item is affected by non-disclosure issues relating to industry or ownership status |

\*Numbers subject to weekly revision Source: Indiana Department of Workforce Development, Research and Development

Bloomington MSA							
Wage and Salaried Employment	March 2026			# Change	% Change	# Change	% Change
Industry	Mar-26	Feb-26	Mar-25	Feb-26 to Mar-26	Mar-25 to Mar-26	Feb-25 to Mar-26	Mar-25 to Mar-26
<b>Total Nonfarm</b>	<b>81,000</b>	<b>80,300</b>	<b>83,600</b>	<b>700</b>	<b>0.9%</b>	<b>-2,600</b>	<b>-3.1%</b>
<b>Total Private</b>	<b>57,500</b>	<b>57,000</b>	<b>57,200</b>	<b>500</b>	<b>0.9%</b>	<b>300</b>	<b>0.5%</b>
Goods Producing	14,200	14,000	13,700	200	1.4%	500	3.7%
Service-Providing	66,800	66,300	69,900	500	0.8%	-3,100	-4.4%
Private Service Providing	43,300	43,000	43,500	300	0.7%	-200	-0.5%
Mining, Logging and Construction	3,700	3,600	3,300	100	2.8%	400	12.1%
Manufacturing	10,500	10,400	10,400	100	1.0%	100	1.0%
Durable Goods	5,800	5,800	6,000	0	0.0%	-200	-3.3%
Trade, Transportation, and Utilities	9,800	9,800	9,900	0	0.0%	-100	-1.0%
Wholesale Trade	2,100	2,100	2,100	0	0.0%	0	0.0%
Retail Trade	6,600	6,600	6,600	0	0.0%	0	0.0%
Transportation, Warehousing, and Utilities	1,100	1,100	1,200	0	0.0%	-100	-8.3%
Information	800	800	800	0	0.0%	0	0.0%
Financial Activities	2,800	2,700	2,800	100	3.7%	0	0.0%
Professional and Business Services	5,800	5,700	5,800	100	1.8%	0	0.0%
Education and Health Services	12,200	12,200	12,500	0	0.0%	-300	-2.4%
Leisure and Hospitality	9,300	9,200	9,000	100	1.1%	300	3.3%
Other Services	2,600	2,600	2,700	0	0.0%	-100	-3.7%
<b>Total Government</b>	<b>23,500</b>	<b>23,300</b>	<b>26,400</b>	<b>200</b>	<b>0.9%</b>	<b>-2,900</b>	<b>-11.0%</b>
Federal Government	300	300	400	0	0.0%	-100	-25.0%
State Government	17,900	17,700	20,300	200	1.1%	-2,400	-11.8%
Local Government	5,300	5,300	5,700	0	0.0%	-400	-7.0%
Local Government Educational Services	2,600	2,600	2,900	0	0.0%	-300	-10.3%
Local Government excluding Educational Services	2,700	2,700	2,800	0	0.0%	-100	-3.6%

Source: Indiana Dept of Workforce Development, Research and Analysis, Current Employment Statistics

### Bloomington MSA Employment Trends



Source: Indiana Department of Workforce Development, Research & Analysis, Current Employment Statistics | Note: Historical data for the most recent 4 years (both seasonally adjusted and not seasonally adjusted) are revised near the beginning of each calendar year, prior to the release of January estimates for statewide data.

<b>Frequently Listed Jobs</b>	
<b>Top 20 job listings by number of postings in Region 8 in the past month</b>	
<b>Rank</b>	<b>Occupations</b>
1	Registered Nurses
2	Physicians
3	Driver/Sales Workers and Truck Drivers
4	Retail Salespersons
5	First-Line Supervisors of Sales Workers
6	Home Health and Personal Care Aides
7	Therapists
8	Building Cleaning Workers
9	Laborers and Material Movers
10	Postsecondary Teachers
11	Sales Representatives, Wholesale and Manufacturing
12	Medical and Health Services Managers
13	Diagnostic Related Technologists and Technicians
14	Customer Service Representatives
15	Health Practitioner Support Technologists and Technicians
16	Logisticians and Project Management Specialists
17	Maintenance and Repair Workers, General
18	Licensed Practical and Licensed Vocational Nurses
19	Designers
20	Food Preparation Workers

Source: Lightcast

<b>Applicant Pool</b>	
<b>Top 20 occupations desired by applicants on their resumes in the past 12 months</b>	
<b>Occupations</b>	<b># of applicants</b>
Heavy and Tractor-Trailer Truck Drivers	88
Production Workers, All Other	84
Assemblers and Fabricators, All Other	81
Office Clerks, General	64
Cashiers	58
Laborers and Freight, Stock, and Material Movers, Hand	57
Customer Service Representatives	55
Helpers--Production Workers	48
Office and Administrative Support Workers, All Other	43
Construction Laborers	41
Welders, Cutters, Solderers, and Brazers	37
Executive Secretaries and Executive Administrative Assistants	34
Managers, All Other	34
Operating Engineers and Other Construction Equipment Operators	32
Janitors and Cleaners, Except Maids and Housekeeping Cleaners	30
Retail Salespersons	30
Team Assemblers	29
Waiters and Waitresses	29
Medical Assistants	27
General and Operations Managers	26

Source: Indiana Workforce Development, Indiana Career Connect.

SNAPSHOT

# March Indiana Employment

Released May 6, 2026



## Unemployment Rate

\*seasonally adjusted

Unemployment Rate

**3.3%**



February 2026 Indiana

**3.3%**



National Unemployment Rate



## LABOR FORCE PARTICIPATION RATE\*

16+: **63.3%**

25-44: **83.9%**

25-54: **83.5%**



National Labor Force



Open Job Postings

**98,050**

**Jobs**

As of March 29, 2026



Weekly UI Continued Claims

**20,972**

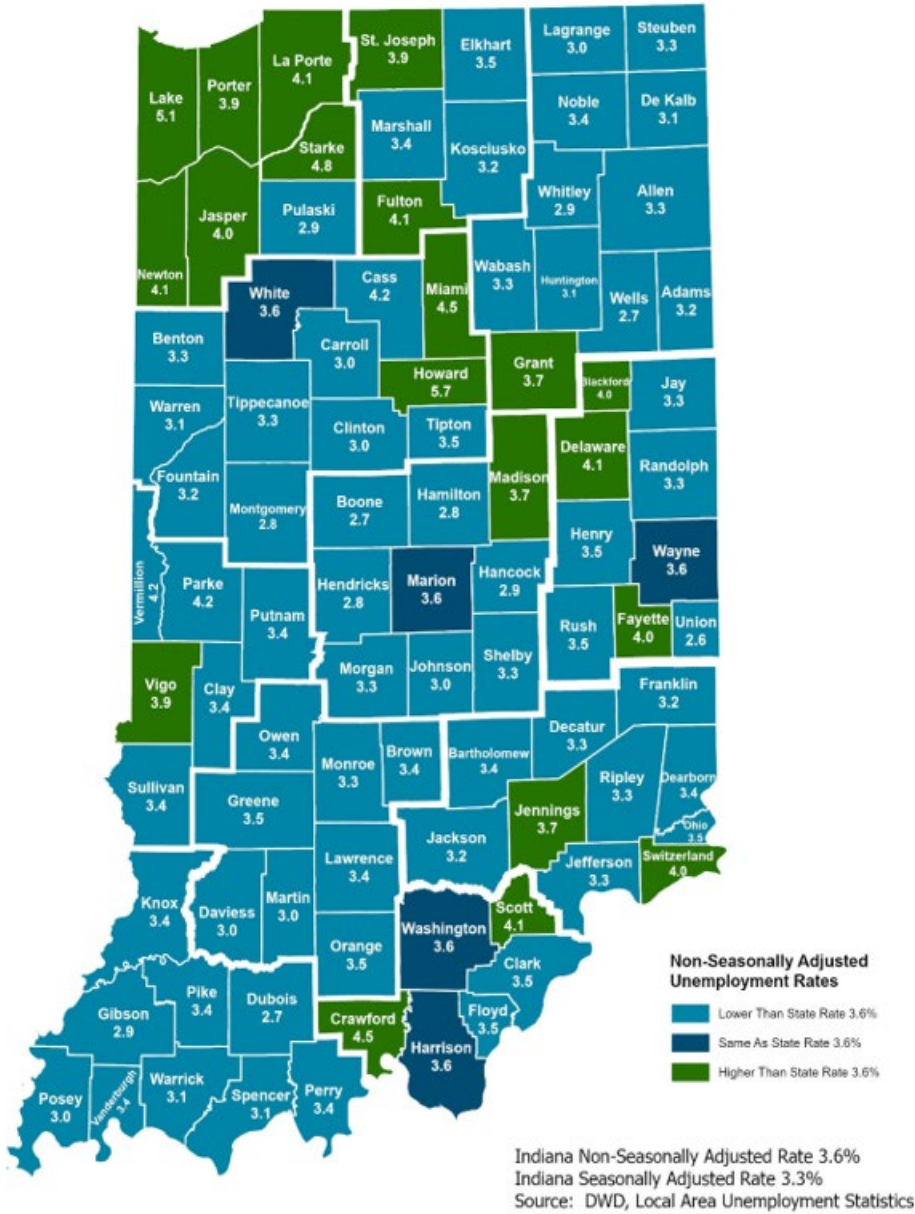


Filed Week Ending April 4, 2026

Source: Local Area Unemployment Statistics, Bureau of Labor Statistics; Indiana Career Connect

\*The percentage of Hoosiers 16 and older who are either working or actively looking for work. Those not in the labor force include primarily, students, retirees and other non-working populations, such as individuals unable to work due to a disability or illness, or adults responsible for their family's childcare needs.

# County Unemployment Rates March 2026



INDIANA DEPARTMENT OF  
**WORKFORCE**  
DEVELOPMENT

## Questions?

Please contact the DWD  
Regional Workforce  
Analyst listed below:

**Cassie Janes**

Research and Analysis

[Indiana Department of  
Workforce Development](https://www.in.gov/dwd/)

[cjanes@dwd.in.gov](mailto:cjanes@dwd.in.gov)