



# HOOSIERS BY THE NUMBERS

Your premier source for labor market information for Indiana.

## DWD

INDIANA DEPARTMENT OF  
**WORKFORCE**  
DEVELOPMENT

LABOR MARKET REVIEW



## February 2026 Labor Market Review

Reported by: **Cassie Janes**

Regional Workforce Analyst

[Email Cassie](#)

[cjanes@dwd.in.gov](mailto:cjanes@dwd.in.gov)



INDIANA DEPARTMENT OF  
**WORKFORCE**  
DEVELOPMENT

# Economic Growth Region 8

Statistical Data Report for February 2026, Released April 2026

## State Employment and Unemployment

Unemployment rates were higher in February in 1 state and stable in 49 states and the District of Columbia, the U.S. Bureau of Labor Statistics reported. Thirteen states and the District had jobless rate increases from a year earlier, 2 states had decreases, and 35 states had little change. The national unemployment rate, 4.4 percent, changed little over the month but was 0.2 percentage point higher than in February 2025.

In February 2026, nonfarm payroll employment decreased in 2 states, increased in 1 state, and was essentially unchanged in 47 states and the District of Columbia. Over the year, nonfarm payroll employment decreased in 2 states and the District, increased in 2 states, and was essentially unchanged in 46 states.

Hawaii and South Dakota had the lowest jobless rates in February, 2.3 percent each. The District of Columbia had the highest unemployment rate, 6.5 percent. The next highest rates were in California and Delaware, 5.4 percent each. In total, 21 states had unemployment rates lower than the U.S. figure of 4.4 percent, 6 states and the District had higher rates, and 23 states had rates that were not appreciably different from that of the nation.



### Economic Growth Region (EGR) 8

Brown, Daviess, Greene, Lawrence, Martin, Monroe, Orange and Owen Counties

### Unemployment Rates by State (seasonally adjusted): February 2026

- U.S. - 4.4%**
- Illinois - 5%
- Indiana - 3.3%**
- Kentucky - 4.2%
- Michigan - 5%
- Ohio - 4.2%

Source: U.S. Department of Labor, Bureau of Labor Statistics

### Unemployment Rank by County (of 92 counties): February 2026

- #16 - Greene (4.3%)
- #33 - Brown (3.8%)
- #37 - Lawrence (3.8%)
- #39 - Orange (3.8%)
- #42 - Owen (3.7%)
- #68 - Monroe (3.4%)
- #73 - Daviess (3.3%)
- #75 - Martin (3.3%)

Source: Indiana Department of Workforce Development, Research and Development, Local Area Unemployment Statistics

February 2026 Labor Force Estimates (not seasonally adjusted)						
Area	Labor Force	Employed	Unemployed	Feb-26	Jan-26	Feb-25
U.S.	170,206,000	162,153,000	8,052,000	4.7%	4.7%	4.5%
IN	3,461,067	3,330,356	130,711	3.8%	3.3%	4.3%
EGR 8	161,608	155,802	5,806	3.6%	2.9%	3.9%
Bloomington MSA	86,180	83,183	2,997	3.5%	2.7%	3.8%
Brown Co.	7,767	7,474	293	3.8%	3.3%	4.3%
Daviess Co.	16,108	15,578	530	3.3%	2.7%	3.2%
Greene Co.	14,558	13,938	620	4.3%	3.5%	4.7%
Lawrence Co.	22,359	21,519	840	3.8%	3.2%	4.3%
Martin Co.	5,148	4,980	168	3.3%	2.8%	3.5%
Monroe Co.	75,405	72,808	2,597	3.4%	2.6%	3.7%
Orange Co.	9,488	9,130	358	3.8%	3.1%	4.6%
Owen Co.	10,775	10,375	400	3.7%	3.2%	4.4%
Bloomington	42,505	41,001	1,504	3.5%	2.5%	3.8%

Source: Indiana Department of Workforce Development, Research & Analysis, Local Area Unemployment Statistics | Unemployment Statistics Released: 04/26 | Notes: The data displayed are presented as estimates only. The most recent month's data are always preliminary and are revised when the next month's data are released.

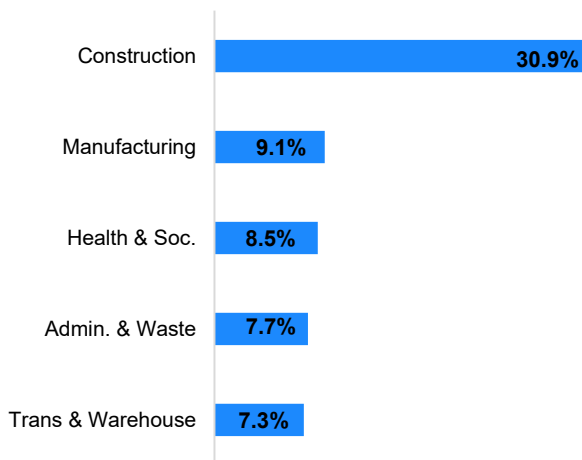
### Consumer Price Index (CPI-U Change), Unadjusted Percent Change to February 2026 from

CPI Item	Feb-25	Jan-26	Feb-25	Jan-26
	U.S. City		Midwest Region*	
<b>All Items</b>	<b>2.4%</b>	<b>0.5%</b>	<b>2.8%</b>	<b>0.6%</b>
Food & Beverages	3.0%	0.4%	3.0%	0.9%
Housing	3.3%	0.3%	4.6%	0.7%
Apparel	2.5%	4.2%	3.0%	4.2%
Transportation	-0.5%	0.8%	-1.6%	0.5%
Medical Care	3.4%	0.4%	3.7%	0.5%
Recreation	2.3%	0.2%	4.1%	0.4%
Education & Communication	0.1%	-0.2%	0.0%	-0.8%
Other Goods & Services	5.1%	0.1%	2.4%	0.1%

\*Midwest region = Midwest Urban Average. Midwest Region includes Illinois, Indiana, Iowa, Kansas, Michigan, Minnesota, Missouri, Nebraska, North Dakota, Ohio, South Dakota and Wisconsin | Source: U.S. Bureau of Labor Statistics

### Percentage of Unemployment Claims for Top 5 Region 8 Industries February 2026

#### Distribution as a Percent of Total



Source: Indiana Department of Workforce Development, Research and Analysis

### WARN Notices

#### WARN Notices for Region 8 for February 2026

Company	City	County	# of workers affected	Notice Date

**There are no WARN Notices for February 2026 for EGR 8.**

Source: Indiana Department of Workforce Development, WARN Notices | For information on WARN Act requirements, you may go to the U.S. Department of Labor Employment Training Administration Fact Sheet:  
<https://www.doleta.gov/programs/factsht/warn.htm>

### Unemployment Claims: February 2026

#### Region 8

##### Initial Claims

02/07/26 - 172(D)  
 02/14/26 - 85(D)  
 02/21/26 - 72(D)  
 02/28/26 - 50(D)

##### Continued Claims

02/07/26 - 939  
 02/14/26 - 898  
 02/21/26 - 831  
 02/28/26 - 788

##### Total Claims

02/07/26 - 1,111  
 02/14/26 - 983  
 02/21/26 - 903  
 02/28/26 - 838

#### State of Indiana

##### Initial Claims

02/07/26 - 4,025  
 02/14/26 - 2,941  
 02/21/26 - 2,469  
 02/28/26 - 2,514

##### Continued Claims

02/07/26 - 26,734  
 02/14/26 - 25,628  
 02/21/26 - 25,117  
 02/28/26 - 24,518

##### Total Claims

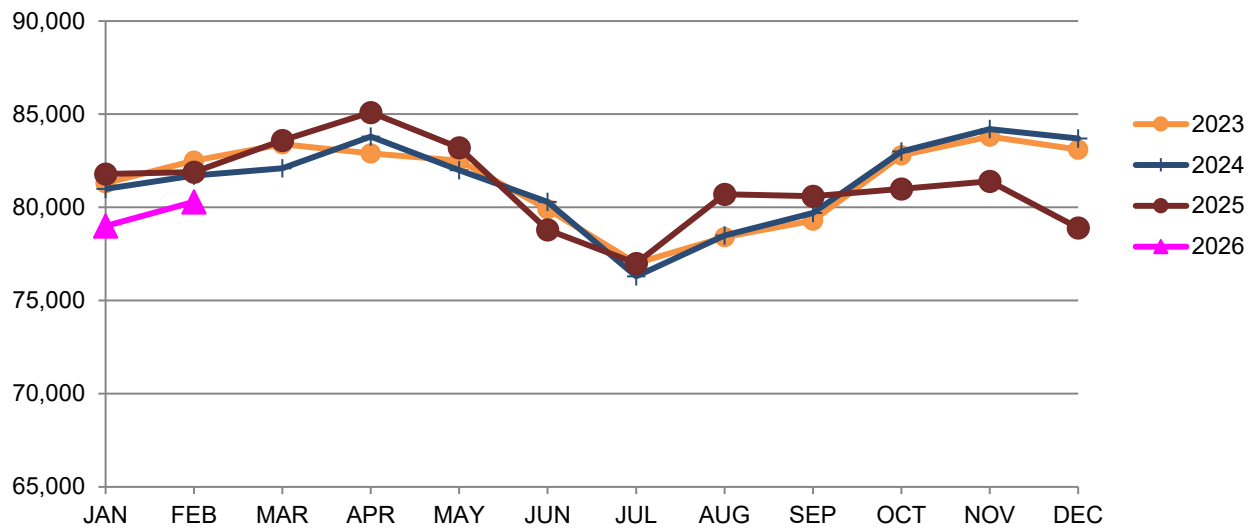
02/07/26 - 30,759  
 02/14/26 - 28,569  
 02/21/26 - 27,586  
 02/28/26 - 27,032

(D) indicates item is affected by non-disclosure issues relating to industry or ownership status |  
 \*Numbers subject to weekly revision Source: Indiana Department of Workforce Development, Research and Development

Bloomington MSA							
Wage and Salaried Employment	February 2026			# Change	% Change	# Change	% Change
Industry	Feb-26	Jan-26	Feb-25	Jan-26 to Feb-26	Feb-25 to Feb-26	Feb-25 to Feb-26	Feb-25 to Feb-26
<b>Total Nonfarm</b>	<b>80,300</b>	<b>79,000</b>	<b>81,900</b>	<b>1,300</b>	<b>1.7%</b>	<b>-1,600</b>	<b>-2.0%</b>
<b>Total Private</b>	<b>57,000</b>	<b>56,800</b>	<b>57,300</b>	<b>200</b>	<b>0.4%</b>	<b>-300</b>	<b>-0.5%</b>
Goods Producing	14,000	14,000	13,500	0	0.0%	500	3.7%
Service-Providing	66,300	65,000	68,400	1,300	2.0%	-2,100	-3.1%
Private Service Providing	43,000	42,800	43,800	200	0.5%	-800	-1.8%
Mining, Logging and Construction	3,600	3,600	3,100	0	0.0%	500	16.1%
Manufacturing	10,400	10,400	10,400	0	0.0%	0	0.0%
Durable Goods	5,800	5,800	6,000	0	0.0%	-200	-3.3%
Trade, Transportation, and Utilities	9,800	10,000	10,000	-200	-2.0%	-200	-2.0%
Wholesale Trade	2,100	2,100	2,100	0	0.0%	0	0.0%
Retail Trade	6,600	6,700	6,700	-100	-1.5%	-100	-1.5%
Transportation, Warehousing, and Utilities	1,100	1,200	1,200	-100	-8.3%	-100	-8.3%
Information	800	800	800	0	0.0%	0	0.0%
Financial Activities	2,700	2,800	2,800	-100	-3.6%	-100	-3.6%
Professional and Business Services	5,700	5,700	5,900	0	0.0%	-200	-3.4%
Education and Health Services	12,200	12,200	12,600	0	0.0%	-400	-3.2%
Leisure and Hospitality	9,200	8,700	9,100	500	5.8%	100	1.1%
Other Services	2,600	2,600	2,600	0	0.0%	0	0.0%
<b>Total Government</b>	<b>23,300</b>	<b>22,200</b>	<b>24,600</b>	<b>1,100</b>	<b>5.0%</b>	<b>-1,300</b>	<b>-5.3%</b>
Federal Government	300	300	400	0	0.0%	-100	-25.0%
State Government	17,700	16,600	18,700	1,100	6.6%	-1,000	-5.4%
Local Government	5,300	5,300	5,500	0	0.0%	-200	-3.6%
Local Government Educational Services	2,600	2,600	2,800	0	0.0%	-200	-7.1%
Local Government excluding Educational Services	2,700	2,700	2,700	0	0.0%	0	0.0%

Source: Indiana Dept of Workforce Development, Research and Analysis, Current Employment Statistics

### Bloomington MSA Employment Trends



Source: Indiana Department of Workforce Development, Research & Analysis, Current Employment Statistics | Note: Historical data for the most recent 4 years (both seasonally adjusted and not seasonally adjusted) are revised near the beginning of each calendar year, prior to the release of January estimates for statewide data.

<b>Frequently Listed Jobs</b>	
<b>Top 20 job listings by number of postings in Region 8 in the past month</b>	
<b>Rank</b>	<b>Occupations</b>
1	Registered Nurses
2	Home Health and Personal Care Aides
3	Heavy and Tractor-Trailer Truck Drivers
4	Retail Salespersons
5	First-Line Supervisors of Retail Sales Workers
6	Postsecondary Teachers
7	Medical and Health Services Managers
8	Maintenance and Repair Workers, General
9	Food Preparation Workers
10	Physical Therapists
11	Licensed Practical and Licensed Vocational Nurses
12	Customer Service Representatives
13	Merchandise Displayers and Window Trimmers
14	Maids and Housekeeping Cleaners
15	Sales Representatives, Wholesale and Manufacturing, Except Technical and Scientific Products
16	Janitors and Cleaners, Except Maids and Housekeeping Cleaners
17	Nursing Assistants
18	Food Service Managers
19	Fast Food and Counter Workers
20	Stockers and Order Fillers

Source: Lightcast

<b>Applicant Pool</b>	
<b>Top 20 occupations desired by applicants on their resumes in the past 12 months</b>	
<b>Occupations</b>	<b># of applicants</b>
Heavy and Tractor-Trailer Truck Drivers	114
Production Workers, All Other	108
Assemblers and Fabricators, All Other	103
Office Clerks, General	71
Cashiers	69
Helpers--Production Workers	65
Laborers and Freight, Stock, and Material Movers, Hand	65
Construction Laborers	60
Customer Service Representatives	58
Office and Administrative Support Workers, All Other	51
Welders, Cutters, Solderers, and Brazers	46
Managers, All Other	41
Operating Engineers and Other Construction Equipment Operators	41
Executive Secretaries and Executive Administrative Assistants	39
Retail Salespersons	39
Waiters and Waitresses	37
General and Operations Managers	35
Industrial Truck and Tractor Operators	35
Janitors and Cleaners, Except Maids and Housekeeping Cleaners	34
Carpenters	33

Source: Indiana Workforce Development, Indiana Career Connect.

BREAKDOWN

# February Indiana Labor Force

Released April 22, 2026



Total Population  
**6,973,333**



Labor Force (Age 16+)  
**3,498,263**



Not in the Labor Force (Age 16+)  
**1,978,900**

Employed  
**3,382,822**

Source: Local Area Unemployment Statistics, February 2026, Bureau of Labor Statistics

Unemployed (Seeking)  
**115,441**

Do Not Want a Job  
**1,867,900**

Source: Local Area Unemployment Statistics, February 2026, Bureau of Labor Statistics

Want a Job (Not Seeking)  
**111,000**

Want a Job (Available to Work Now)  
**38,600**

## Potential Workers

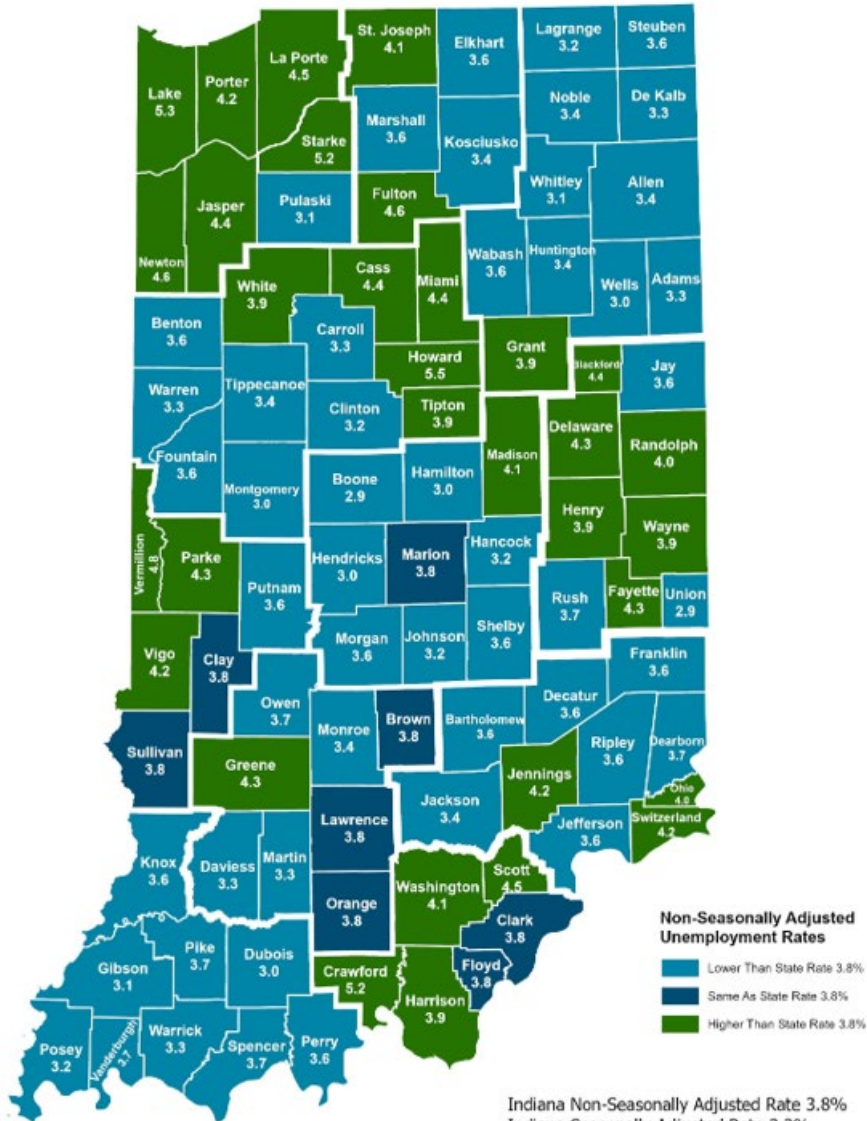
(Unemployed and Seeking a Job + Not in the Labor Force but Want a Job/Available to Work Now)

**154,041**

More about the US Bureau of Labor Statistics data sources used within:  
Local Area Unemployment Statistics (LAUS): Captures Indiana's labor force, which includes those currently employed and those who are unemployed and actively seeking work.  
Current Population Survey (CPS): Captures individuals not participating in Indiana's Labor Force. This set includes non-participants that do not want a job (i.e. retirees and students) and those that want a job but are not actively seeking work.  
U.S. Census Bureau, Indiana Population 2025

Resource: Notes on Using Current Population Survey (CPS) Subnational Data and Differences Between CPS and LAUS Estimates

# County Unemployment Rates February 2026



Indiana Non-Seasonally Adjusted Rate 3.8%  
 Indiana Seasonally Adjusted Rate 3.3%  
 Source: DWD, Local Area Unemployment Statistics



INDIANA DEPARTMENT OF  
**WORKFORCE**  
 DEVELOPMENT

### Questions?

Please contact the DWD  
 Regional Workforce  
 Analyst listed below:

**Cassie Janes**

Research and Analysis

[Indiana Department of Workforce Development](http://Indiana Department of Workforce Development)

[cjanes@dwd.in.gov](mailto:cjanes@dwd.in.gov)