



# HOOSIERS BY THE NUMBERS

Your premier source for labor market information for Indiana.

**DWD**

INDIANA DEPARTMENT OF  
**WORKFORCE**  
DEVELOPMENT

LABOR MARKET REVIEW



**September 2025  
Labor Market Review**

**Reported by: Cassie Janes**

Regional Workforce Analyst

[Email Cassie](#)

[cjanes@dwd.in.gov](mailto:cjanes@dwd.in.gov)

**DWD**

INDIANA DEPARTMENT OF  
**WORKFORCE**  
DEVELOPMENT

# Economic Growth Region 8

Statistical Data Report for September 2025, Released December 2025

## State Employment and Unemployment

Unemployment rates were higher in September in 8 states, lower in 2 states, and stable in 40 states and the District of Columbia, the U.S. Bureau of Labor Statistics reported. Eighteen states and the District had jobless rate increases from a year earlier, 9 states had decreases, and 23 states had little change. South Dakota had the lowest jobless rate in September, 2.0 percent. The District of Columbia had the highest unemployment rate, 6.2 percent. The next highest rate was in California, 5.6 percent. The national unemployment rate, 4.4 percent, changed little over the month but was 0.3 percentage point higher than in September 2024. Eighteen states and the District of Columbia had unemployment rate increases from September 2024, the largest of which was in Oregon (+1.0 percentage point). Nine states had over-the-year rate decreases, the largest of which was in Indiana (-0.7 percentage point).

In September 2025, nonfarm payroll employment increased in 1 state, decreased in 1 state, and was essentially unchanged in 48 states and the District of Columbia. Over the year, nonfarm payroll employment increased in 15 states and was essentially unchanged in 35 states and the District.

September 2025 Labor Force Estimates (not seasonally adjusted)						
Area	Labor Force	Employed	Unemployed	Sep-25	Aug-25	Sep-24
U.S.	171,217,000	163,894,000	7,324,000	4.3%	4.5%	3.9%
IN	3,500,370	3,377,247	123,123	3.5%	3.8%	4.0%
EGR 8	163,072	157,687	5,385	3.3%	3.8%	3.6%
Bloomington MSA	86,955	84,121	2,834	3.3%	4.0%	3.4%
Brown Co.	8,038	7,782	256	3.2%	3.2%	3.7%
Daviess Co.	16,656	16,178	478	2.9%	3.2%	3.1%
Greene Co.	14,681	14,145	536	3.7%	3.8%	4.5%
Lawrence Co.	22,050	21,257	793	3.6%	3.7%	4.4%
Martin Co.	5,398	5,234	164	3.0%	3.1%	3.1%
Monroe Co.	76,086	73,634	2,452	3.2%	4.0%	3.3%
Orange Co.	9,294	8,970	324	3.5%	3.7%	4.2%
Owen Co.	10,869	10,487	382	3.5%	3.7%	3.8%
Bloomington	42,708	41,271	1,437	3.4%	4.6%	3.3%

Source: Indiana Department of Workforce Development, Research & Analysis, Local Area Unemployment Statistics | Unemployment Statistics Released: 10/25 | Notes: The data displayed are presented as estimates only. The most recent month's data are always preliminary and are revised when the next month's data are released.



## Economic Growth Region (EGR) 8

Brown, Daviess, Greene, Lawrence, Martin, Monroe, Orange and Owen Counties

## Unemployment Rates by State (seasonally adjusted): September 2025

**U.S. - 4.4%**

Illinois - 4.4%

**Indiana - 3.7%**

Kentucky - 4.7%

Michigan - 5.1%

Ohio - 4.8%

Source: U.S. Department of Labor, Bureau of Labor Statistics

## Unemployment Rank by County (of 92 counties): September 2025

#20 - Greene (3.7%)

#28 - Lawrence (3.6%)

#35 - Orange (3.5%)

#36 - Owen (3.5%)

#63 - Brown (3.2%)

#68 - Monroe (3.2%)

#84 - Martin (3%)

#87 - Daviess (2.9%)

Source: Indiana Department of Workforce Development, Research and Development, Local Area Unemployment Statistics

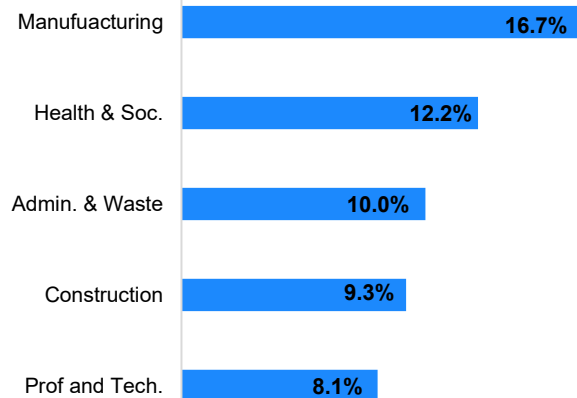
### Consumer Price Index (CPI-U Change), Unadjusted Percent Change to September 2025 from

CPI Item	Sep-24	Aug-25	Sep-24	Aug-25
	U.S. City		Midwest Region*	
<b>All Items</b>	<b>3.0%</b>	<b>0.3%</b>	<b>3.1%</b>	<b>0.3%</b>
Food & Beverages	3.0%	0.3%	2.8%	0.2%
Housing	3.9%	0.1%	4.5%	0.2%
Apparel	-0.1%	2.6%	1.2%	4.1%
Transportation	1.7%	0.1%	0.5%	-0.5%
Medical Care	3.3%	0.2%	2.9%	0.5%
Recreation	3.0%	0.3%	4.7%	0.6%
Education & Communication	0.4%	0.2%	0.6%	0.7%
Other Goods & Services	4.1%	0.4%	3.3%	0.9%

\*Midwest region = Midwest Urban Average. Midwest Region includes Illinois, Indiana, Iowa, Kansas, Michigan, Minnesota, Missouri, Nebraska, North Dakota, Ohio, South Dakota and Wisconsin | Source: U.S. Bureau of Labor Statistics

### Percentage of Unemployment Claims for Top 5 Region 8 Industries September 2025

#### Distribution as a Percent of Total



Source: Indiana Department of Workforce Development, Research and Analysis

### WARN Notices

#### WARN Notices for Region 8 for September 2025

Company	City	County	# of workers affected	Notice Date
Perdue Foods LLC	Washington	Daviess	293	9/3/2025

Source: Indiana Department of Workforce Development, WARN Notices | For information on WARN Act requirements, you may go to the U.S. Department of Labor Employment Training Administration Fact Sheet:

<https://www.doleta.gov/programs/factsht/warn.htm>

### Unemployment Claims: September 2025

#### Region 8

##### Initial Claims

09/06/25 - 49(D)

09/13/25 - 39(D)

09/20/25 - 42(D)

09/27/25 - 71(D)

##### Continued Claims

09/06/25 - 511

09/13/25 - 502

09/20/25 - 508

09/27/25 - 529

##### Total Claims

09/06/25 - 560

09/13/25 - 541

09/20/25 - 550

09/27/25 - 600

#### State of Indiana

##### Initial Claims

09/06/25 - 2,348

09/13/25 - 2,652

09/20/25 - 2,456

09/27/25 - 2,285

##### Continued Claims

09/06/25 - 20,005

09/13/25 - 19,658

09/20/25 - 19,093

09/27/25 - 19,375

##### Total Claims

09/06/25 - 22,353

09/13/25 - 22,310

09/20/25 - 21,549

09/27/25 - 21,660

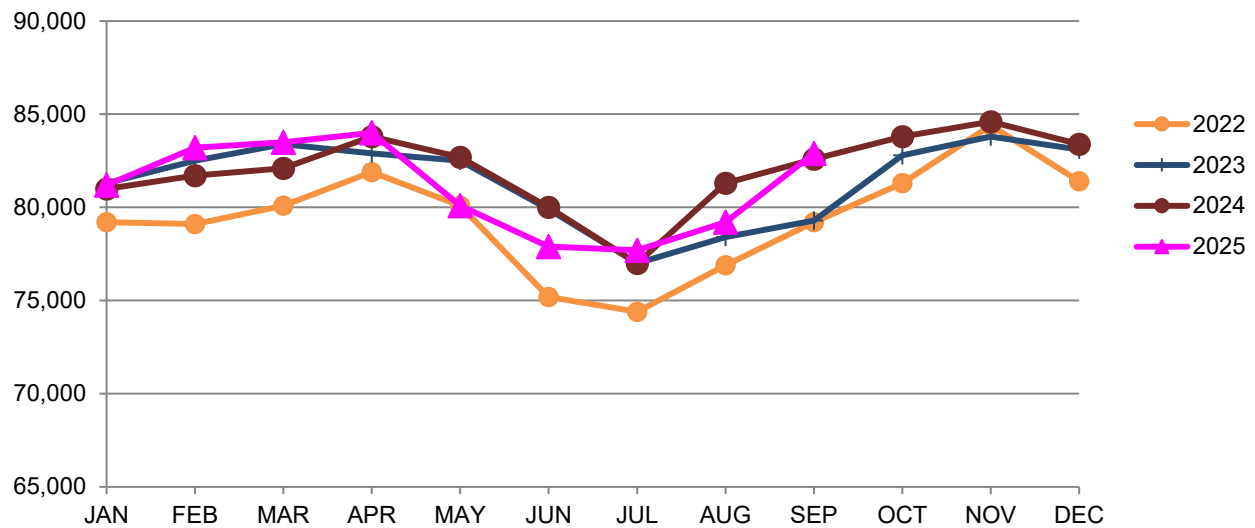
(D) indicates item is affected by non-disclosure issues relating to industry or ownership status |

\*Numbers subject to weekly revision Source: Indiana Department of Workforce Development, Research and Development

Bloomington MSA							
Wage and Salaried Employment	September 2025			# Change	% Change	# Change	% Change
Industry	Sep-25	Aug-25	Sep-24	Aug-25 to Sep-25		Sep-24 to Sep-25	
<b>Total Nonfarm</b>	<b>82,900</b>	<b>79,200</b>	<b>82,600</b>	<b>3,700</b>	<b>4.7%</b>	<b>300</b>	<b>0.4%</b>
<b>Total Private</b>	<b>58,100</b>	<b>58,100</b>	<b>57,500</b>	<b>0</b>	<b>0.0%</b>	<b>600</b>	<b>1.0%</b>
Goods Producing	13,800	13,800	13,700	0	0.0%	100	0.7%
Service-Providing	69,100	65,400	68,900	3,700	5.7%	200	0.3%
Private Service Providing	44,300	44,300	43,800	0	0.0%	500	1.1%
Mining, Logging and Construction	3,500	3,500	3,400	0	0.0%	100	2.9%
Manufacturing	10,300	10,300	10,300	0	0.0%	0	0.0%
Durable Goods	5,900	5,900	6,000	0	0.0%	-100	-1.7%
Trade, Transportation, and Utilities	10,400	10,400	10,400	0	0.0%	0	0.0%
Wholesale Trade	2,300	2,300	2,300	0	0.0%	0	0.0%
Retail Trade	6,800	6,800	6,800	0	0.0%	0	0.0%
Transportation, Warehousing, and Utilities	1,300	1,300	1,300	0	0.0%	0	0.0%
Information	800	800	800	0	0.0%	0	0.0%
Financial Activities	2,600	2,700	2,700	-100	-3.7%	-100	-3.7%
Professional and Business Services	6,200	6,200	5,900	0	0.0%	300	5.1%
Education and Health Services	12,600	12,600	12,300	0	0.0%	300	2.4%
Leisure and Hospitality	9,100	9,000	9,100	100	1.1%	0	0.0%
Other Services	2,600	2,600	2,600	0	0.0%	0	0.0%
<b>Total Government</b>	<b>24,800</b>	<b>21,100</b>	<b>25,100</b>	<b>3,700</b>	<b>17.5%</b>	<b>-300</b>	<b>-1.2%</b>
Federal Government	400	400	300	0	0.0%	100	33.3%
State Government	19,000	15,400	19,300	3,600	23.4%	-300	-1.6%
Local Government	5,400	5,300	5,500	100	1.9%	-100	-1.8%
Local Government Educational Services	2,600	2,500	2,700	100	4.0%	-100	-3.7%
Local Government excluding Educational Services	2,800	2,800	2,800	0	0.0%	0	0.0%

Source: Indiana Dept of Workforce Development, Research and Analysis, Current Employment Statistics

## Bloomington MSA Employment Trends



Source: Indiana Department of Workforce Development, Research & Analysis, Current Employment Statistics | Note: Historical data for the most recent 4 years (both seasonally adjusted and not seasonally adjusted) are revised near the beginning of each calendar year, prior to the release of January estimates for statewide data.

Frequently Listed Jobs	
Top 20 job listings by number of postings in Region 8 in the past month	
Rank	Occupations
1	Registered Nurses
2	Home Health and Personal Care Aides
3	Heavy and Tractor-Trailer Truck Drivers
4	Retail Salespersons
5	Food Service Managers
6	Food Preparation Workers
7	Medical and Health Services Managers
8	Sales Representatives, Wholesale and Manufacturing, Except Technical and Scientific Products
9	Physical Therapists
10	First-Line Supervisors of Retail Sales Workers
11	Maintenance and Repair Workers, General
12	Postsecondary Teachers
13	Nursing Assistants
14	Licensed Practical and Licensed Vocational Nurses
15	Fast Food and Counter Workers
16	Customer Service Representatives
17	General and Operations Managers
18	Laborers and Freight, Stock, and Material Movers, Hand
19	First-Line Supervisors of Mechanics, Installers, and Repairers
20	Maids and Housekeeping Cleaners

Source: Lightcast

Applicant Pool	
Top 20 occupations desired by applicants on their resumes in the past 12 months	
Occupations	# of applicants
Heavy and Tractor-Trailer Truck Drivers	148
Assemblers and Fabricators, All Other	116
Production Workers, All Other	107
Construction Laborers	87
Cashiers	84
Helpers--Production Workers	84
Laborers and Freight, Stock, and Material Movers, Hand	84
Welders, Cutters, Solderers, and Brazers	72
Office Clerks, General	70
Customer Service Representatives	69
Operating Engineers and Other Construction Equipment Operators	61
Managers, All Other	51
Construction and Related Workers, All Other	47
Retail Salespersons	44
Medical Assistants	42
Carpenters	39
Landscaping and Groundskeeping Workers	39
Office and Administrative Support Workers, All Other	37
Executive Secretaries and Executive Administrative Assistants	35
Maintenance and Repair Workers, General	35

Source: Indiana Workforce Development, Indiana Career Connect



## SNAPSHOT

# September Indiana Employment

Released December 11, 2025



## Unemployment Rate

\*seasonally adjusted

Unemployment Rate

**3.7%**



August 2025 Indiana

**3.6%**



National Unemployment Rate



## LABOR FORCE PARTICIPATION RATE\*

16+: **63.7%**

25-44: **85.1%**

25-54: **84.6%**



National Labor Force



Open Job Postings

**88,436**

**Jobs**

As of September 25, 2025



Weekly UI Continued Claims

**19,375**



Filed Week Ending October 4, 2025

Source: Local Area Unemployment Series, Bureau of Labor Statistics; Indiana Career Connect

\* The percentage of Hires and older who are either working or actively looking for work. Those not in the labor force include primarily, students, retirees and other non-working populations, such as individuals unable to work due to a disability or illness, or adults responsible for their family's childcare needs.

**Non-Seasonally Adjusted Unemployment Rates**

- Lower Than State Rate 3.5%
- Some At State Rate 3.5%
- Higher Than State Rate 3.5%

Indiana Non-Seasonally Adjusted Rate 3.5%  
 Indiana Seasonally Adjusted Rate 3.7%  
 Source: DWD, Local Area Unemployment Statistics



**Please contact the DWD  
Regional Workforce  
Analyst listed below:**

## Research and Analysis

[cjanes@dwd.in.gov](mailto:cjanes@dwd.in.gov)