



HOOSIERS BY THE NUMBERS

Your premier source for labor market information for Indiana.

DWD

INDIANA DEPARTMENT OF
WORKFORCE
DEVELOPMENT

LABOR MARKET REVIEW



December 2024 Labor Market Review

Reported by: Cassie Janes

Regional Workforce Analyst

[Email Cassie](mailto:cjanes@dwd.in.gov)

cjanes@dwd.in.gov



INDIANA DEPARTMENT OF
WORKFORCE
DEVELOPMENT

Economic Growth Region 8

Statistical Data Report for December 2024, Released February 2025

State Employment and Unemployment

Unemployment rates were higher in December in 6 states, lower in 2 states, and stable in 42 states and the District of Columbia, the U.S. Bureau of Labor Statistics reported. Twenty-seven states and the District had jobless rate increases from a year earlier, 6 states had decreases, and 17 states had little change. The national unemployment rate changed little over the month at 4.1 percent but was 0.3 percentage point higher than in December 2023.

Nonfarm payroll employment increased in 2 states and was essentially unchanged in 48 states and the District of Columbia in December 2024. Over the year, nonfarm payroll employment increased in 33 states and was essentially unchanged in 17 states and the District.

Unemployment

South Dakota had the lowest jobless rate in December, 1.9 percent. Nevada had the highest unemployment rate, 5.7 percent, followed by California and the District of Columbia, 5.5 percent each. In total, 21 states had unemployment rates lower than the U.S. figure of 4.1 percent, 5 states and the District had higher rates, and 24 states had rates that were not appreciably different from that of the nation.



Economic Growth Region (EGR) 8

Brown, Daviess, Greene, Lawrence, Martin, Monroe, Orange and Owen Counties

Unemployment Rates by State (seasonally adjusted): December 2024

U.S. - 4.1%

Illinois - 5.2%

Indiana - 4.5%

Kentucky - 5.2%

Michigan - 5%

Ohio - 4.4%

Source: U.S. Department of Labor, Bureau of Labor Statistics

Unemployment Rank by County (of 92 counties): December 2024

#11 - Greene (4.9%)

#18 - Lawrence (4.6%)

#20 - Orange (4.6%)

#21 - Owen (4.6%)

#43 - Brown (3.9%)

#49 - Monroe (3.8%)

#89 - Martin (3%)

#91 - Daviess (2.8%)

Source: Indiana Department of Workforce Development, Research and Development, Local Area Unemployment Statistics

December 2024 Labor Force Estimates (not seasonally adjusted)

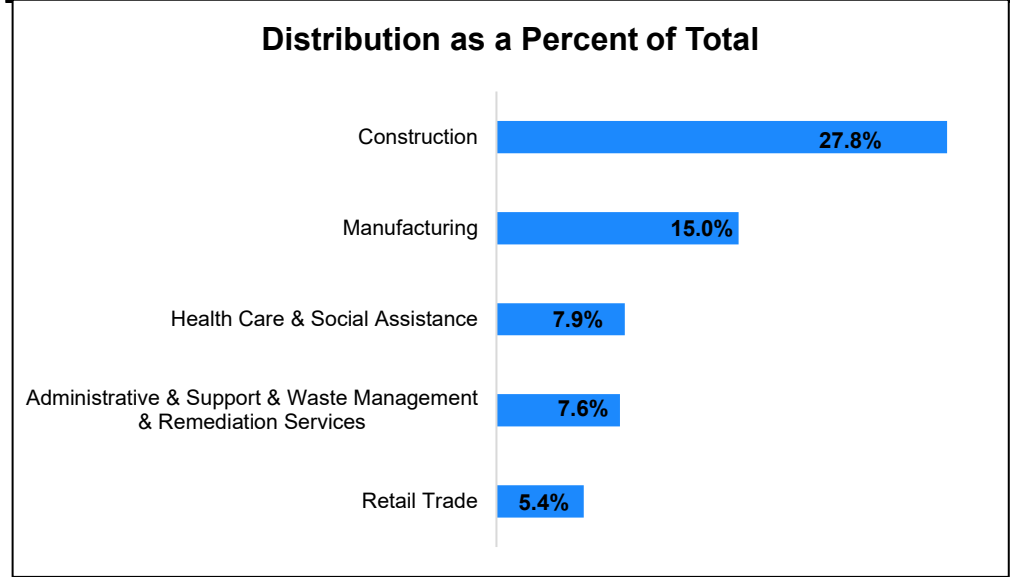
Area	Labor Force	Employed	Unemployed	Dec 2024 Rate	Nov 2024 Rate	Dec 2023 Rate
U.S.	167,746,000	161,294,000	6,452,000	3.8%	4.0%	3.5%
IN	3,439,659	3,301,061	138,598	4.0%	4.2%	2.9%
EGR 8	154,652	148,555	6,097	3.9%	4.2%	2.7%
Bloomington MSA	81,181	78,053	3,128	3.9%	4.2%	2.6%
Brown Co.	8,059	7,742	317	3.9%	3.8%	2.8%
Daviess Co.	17,607	17,115	492	2.8%	3.2%	1.9%
Greene Co.	13,602	12,932	670	4.9%	5.0%	3.3%
Lawrence Co.	20,465	19,523	942	4.6%	4.8%	3.2%
Martin Co.	5,425	5,262	163	3.0%	3.2%	2.5%
Monroe Co.	71,659	68,970	2,689	3.8%	4.1%	2.6%
Orange Co.	8,313	7,928	385	4.6%	4.7%	2.8%
Owen Co.	9,522	9,083	439	4.6%	4.6%	3.3%
Bloomington	39,195	37,633	1,562	4.0%	4.5%	2.5%

Source: Indiana Department of Workforce Development, Research & Analysis, Local Area Unemployment Statistics | Unemployment Statistics Released: 01/25 | Notes: The data displayed are presented as estimates only. The most recent month's data are always preliminary and are revised when the next month's data are released.

Consumer Price Index (CPI-U Change), Unadjusted Percent Change to December 2024 from				
CPI Item	Dec-23	Nov-24	Dec-23	Nov-24
	U.S. City		Midwest Region*	
All Items	2.9%	0.0%	3.0%	0.2%
Food & Beverages	2.4%	0.2%	2.0%	-0.2%
Housing	4.1%	0.2%	4.9%	0.4%
Apparel	1.2%	-1.7%	1.3%	-2.5%
Transportation	1.6%	-0.3%	1.4%	0.3%
Medical Care	2.8%	0.1%	2.3%	0.2%
Recreation	1.1%	0.0%	1.3%	0.1%
Education & Communication	0.6%	-0.1%	-0.2%	0.1%
Other Goods & Services	3.3%	-0.4%	5.0%	-0.4%

*Midwest region = Midwest Urban Average. Midwest Region includes Illinois, Indiana, Iowa, Kansas, Michigan, Minnesota, Missouri, Nebraska, North Dakota, Ohio, South Dakota and Wisconsin | Source: U.S. Bureau of Labor Statistics

**Percentage of Unemployment Claims for Top 5 Region 8 Industries
December 2024**



Source: Indiana Department of Workforce Development, Research and Analysis

WARN Notices

WARN Notices for Region 8 for December 2024				
Company	City	County	# of workers affected	Notice Date

There are no WARN Notices for December 2024 for EGR 8.

Source: Indiana Department of Workforce Development, WARN Notices | For information on WARN Act requirements, you may go to the U.S. Department of Labor Employment Training Administration Fact Sheet: <https://www.doleta.gov/programs/factsht/warn.htm>

**Unemployment Claims:
December 2024**

Region 8

Initial Claims
12/07/24 - 129(D)
12/14/24 - 136(D)
12/21/24 - 123(D)
12/28/24 - 148(D)

Continued Claims
12/07/24 - 668
12/14/24 - 679
12/21/24 - 756
12/28/24 - 827

Total Claims
12/07/24 - 797
12/14/24 - 815
12/21/24 - 879
12/28/24 - 975

State of Indiana

Initial Claims
12/07/24 - 5,319
12/14/24 - 3,846
12/21/24 - 3,726
12/28/24 - 3,675

Continued Claims
12/07/24 - 23,610
12/14/24 - 24,094
12/21/24 - 24,631
12/28/24 - 28,033

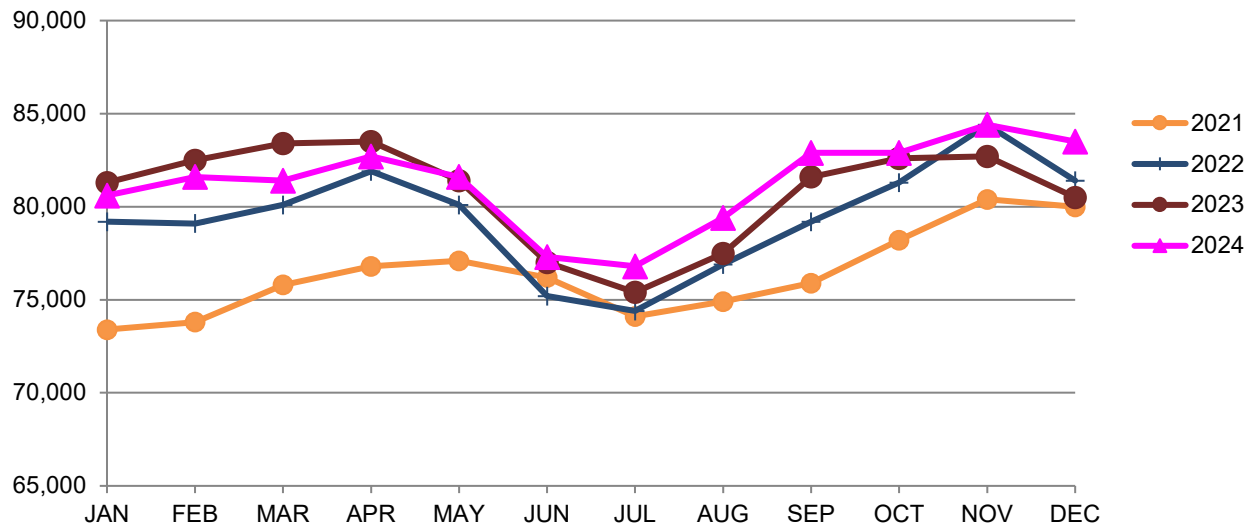
Total Claims
12/07/24 - 28,929
12/14/24 - 27,940
12/21/24 - 28,357
12/28/24 - 31,708

(D) indicates item is affected by non-disclosure issues relating to industry or ownership status | *Numbers subject to weekly revision Source: Indiana Department of Workforce Development, Research and Development

Bloomington MSA							
Wage and Salaried Employment	December 2024			# Change	% Change	# Change	% Change
Industry	Dec-24	Nov-24	Dec-23	Nov-24 to Dec-24	Dec-23 to Dec-24	Dec-23 to Dec-24	Dec-23 to Dec-24
Total Nonfarm	83,500	84,400	80,500	-900	-1.1%	3,000	3.7%
Total Private	58,800	58,800	57,800	0	0.0%	1,000	1.7%
Goods Producing	14,600	14,700	14,300	-100	-0.7%	300	2.1%
Service-Providing	68,900	69,700	66,200	-800	-1.2%	2,700	4.1%
Private Service Providing	44,200	44,100	43,500	100	0.2%	700	1.6%
Mining, Logging and Construction	3,500	3,600	3,300	-100	-2.8%	200	6.1%
Manufacturing	11,100	11,100	11,000	0	0.0%	100	0.9%
Durable Goods	6,300	6,300	6,300	0	0.0%	0	0.0%
Trade, Transportation, and Utilities	10,400	10,300	10,600	100	1.0%	-200	-1.9%
Wholesale Trade	2,100	2,100	2,100	0	0.0%	0	0.0%
Retail Trade	7,000	6,900	7,100	100	1.5%	-100	-1.4%
Transportation, Warehousing, and Utilities	1,300	1,300	1,400	0	0.0%	-100	-7.1%
Information	700	700	700	0	0.0%	0	0.0%
Financial Activities	3,100	3,100	3,100	0	0.0%	0	0.0%
Professional and Business Services	6,000	5,900	5,800	100	1.7%	200	3.5%
Education and Health Services	12,000	12,000	11,800	0	0.0%	200	1.7%
Leisure and Hospitality	9,400	9,500	9,000	-100	-1.1%	400	4.4%
Other Services	2,600	2,600	2,500	0	0.0%	100	4.0%
Total Government	24,700	25,600	22,700	-900	-3.5%	2,000	8.8%
Federal Government	400	300	300	100	33.3%	100	33.3%
State Government	18,700	19,500	17,000	-800	-4.1%	1,700	10.0%
Local Government	5,600	5,800	5,400	-200	-3.5%	200	3.7%
Local Government Educational Services	2,900	2,900	2,700	0	0.0%	200	7.4%
Local Government excluding Educational Services	2,700	2,900	2,700	-200	-6.9%	0	0.0%

Source: Indiana Dept of Workforce Development, Research and Analysis, Current Employment Statistics

Bloomington MSA Employment Trends



Source: Indiana Department of Workforce Development, Research & Analysis, Current Employment Statistics | Note: Historical data for the most recent 4 years (both seasonally adjusted and not seasonally adjusted) are revised near the beginning of each calendar year, prior to the release of January estimates for statewide data.

Frequently Listed Jobs	
Top 20 job listings in Region 8 in the past month	
Rank	Occupations
1	Nursing Assistants
2	Agricultural Equipment Operators
3	Production Workers, All Other
4	Farmworkers and Laborers, Crop, Nursery, and Greenhouse
5	Registered Nurses
6	Segmental Pavers
7	Licensed Practical and Licensed Vocational Nurses
8	Occupational Therapy Assistants
9	Woodworkers, All Other
10	Speech-Language Pathologists
11	Physical Therapist Assistants
12	Claims Adjusters, Examiners, and Investigators
13	Physical Therapists
14	Secretaries and Administrative Assistants, Except Legal, Medical, and Executive
15	Insurance Underwriters
16	Occupational Therapists
17	Physical Therapist Aides
18	Customer Service Representatives
19	Supply Chain Managers
20	Food Preparation Workers

Source: Indiana Workforce Development, Indiana Career Connect. * Due to an upgrade in the reporting system, there is a notable change in Job Postings recorded. The tool used to measure Job Postings was upgraded to prevent malicious or false postings. While customers adjust to the enhancements a drop in the record is to be expected.

Applicant Pool	
Top 20 occupations desired by applicants on their resumes in the past 12 months	
Occupations	# of applicants
Production Workers, All Other	292
Assemblers and Fabricators, All Other	289
Heavy and Tractor-Trailer Truck Drivers	202
Helpers--Production Workers	172
Cashiers	160
Laborers and Freight, Stock, and Material Movers, Hand	152
Construction Laborers	132
Customer Service Representatives	132
Office Clerks, General	124
Welders, Cutters, Solderers, and Brazers	119
Extraction Workers, All Other	113
Construction and Related Workers, All Other	105
Office and Administrative Support Workers, All Other	99
Managers, All Other	91
Receptionists and Information Clerks	83
Retail Salespersons	80
Landscaping and Groundskeeping Workers	79
Operating Engineers and Other Construction Equipment Operators	79
Carpenters	77
Executive Secretaries and Executive Administrative Assistants	74

Source: Indiana Workforce Development, Indiana Career Connect

BREAKDOWN

November Indiana Labor Force

Released December 20, 2024



Total Population
6,862,199



Labor Force (Age 16+)
3,442,250

Employed
3,289,449

Source: Local Area Unemployment Statistics, November 2024, Bureau of Labor Statistics

Unemployed (Seeking)
152,801



Not in the Labor Force (Age 16+)
2,003,200

Do Not Want a Job
1,890,000

Source: Local Area Unemployment Statistics, November 2024, Bureau of Labor Statistics

Want a Job (Not Seeking)
113,200

Want a Job (Available to Work Now)
35,100

Potential Workers

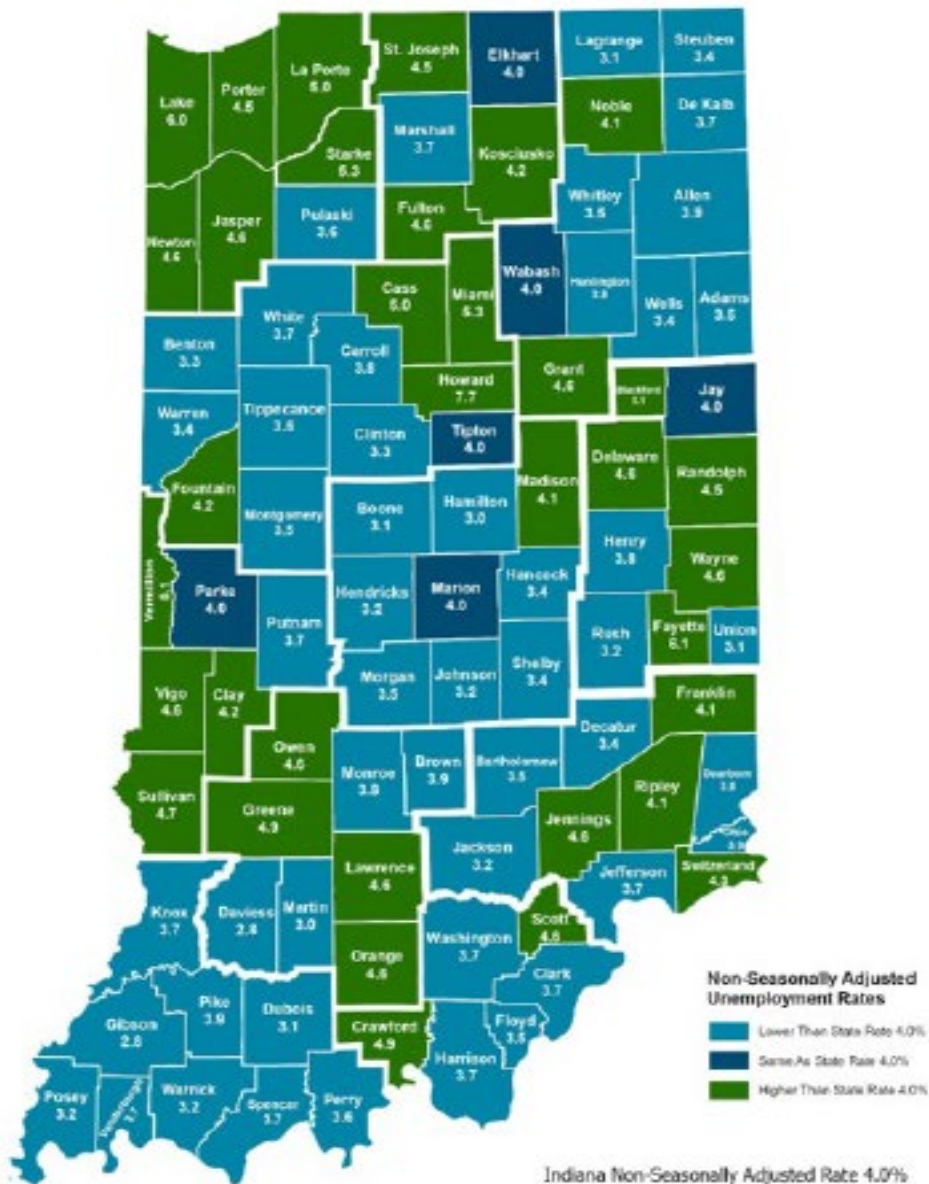
(Unemployed and Seeking a Job + Not in the Labor Force but Want a Job/Available to Work Now)

187,901

More about the US Bureau of Labor Statistics data sources used within:
Local Area Unemployment Statistics (LAUS): Captures Indiana's labor force, which includes those currently employed and those who are unemployed and actively seeking work.
Current Population Survey (CPS): Captures individuals not participating in Indiana's Labor Force. This set includes non-participants that do not want a job (i.e. retirees and students) and those that want a job, but are not actively seeking work.
U.S. Census Bureau, Indiana Population 2023.

Resource: Notes on Using Current Population Survey (CPS) Subnational Data and Differences Between CPS and LAUS Estimates

County Unemployment Rates December 2024



Non-Seasonally Adjusted Unemployment Rates

- Lower Than State Rate 4.0%
- Same As State Rate 4.0%
- Higher Than State Rate 4.0%

Indiana Non-Seasonally Adjusted Rate 4.0%
 Indiana Seasonally Adjusted Rate 4.5%
 Source: DWD, Local Area Unemployment Statistics



INDIANA DEPARTMENT OF
WORKFORCE
 DEVELOPMENT

Questions?

Please contact the DWD
 Regional Workforce
 Analyst listed below:

Cassie Janes

Research and Analysis

[Indiana Department of Workforce Development](https://www.in.gov/dwd/)

cjanes@dwd.in.gov