



# HOOSIERS BY THE NUMBERS

Your premier source for labor market information for Indiana.

## DWD

INDIANA DEPARTMENT OF  
**WORKFORCE**  
DEVELOPMENT

LABOR MARKET REVIEW



## September 2024 Labor Market Review

Reported by: **Cassie Janes**

Regional Workforce Analyst

[Email Cassie](#)

[cjanes@dwd.in.gov](mailto:cjanes@dwd.in.gov)

Tel: 765.507.9710



INDIANA DEPARTMENT OF  
**WORKFORCE**  
DEVELOPMENT

# Economic Growth Region 8

Statistical Data Report for September 2024, Released November 2024

## State Employment and Unemployment

Unemployment rates were higher in September in 5 states, lower in 1 state, and stable in 44 states and the District of Columbia, the U.S. Bureau of Labor Statistics reported. Twenty-two states and the District had jobless rate increases from a year earlier, 6 states had decreases, and 22 states had little change. South Dakota had the lowest jobless rate in September, 2.0 percent, followed by Vermont, 2.2 percent, and North Dakota, 2.3 percent. The District of Columbia had the highest unemployment rate, 5.7 percent, followed by Nevada, 5.6 percent. In total, 23 states had unemployment rates lower than the U.S. figure of 4.1 percent, 4 states and the District had higher rates, and 23 states had rates that were not appreciably different from that of the nation.

The national unemployment rate changed little over the month at 4.1 percent but was 0.3 percentage point higher than in September 2023.

Nonfarm payroll employment increased in 5 states and the District of Columbia and was essentially unchanged in 45 states in September 2024. The largest job gains occurred in New Jersey (+19,200), Colorado (+12,700), and Arizona (+11,200). The largest percentage increase occurred in Idaho (+0.7 percent), followed by the District and Rhode Island (+0.6 percent each).

Over the year, nonfarm payroll employment increased in 30 states and was essentially unchanged in 20 states and the District. The largest job gains occurred in Texas (+327,400), California (+265,300), and Florida (+204,700). The largest percentage increases occurred in Idaho and Montana (+3.4 percent each), followed by South Carolina (+3.3 percent).



## Economic Growth Region (EGR) 8

Brown, Daviess, Greene, Lawrence, Martin, Monroe, Orange and Owen Counties

### Unemployment Rates by State (seasonally adjusted): September 2024

U.S. - 4.1%

Illinois - 5.3%

**Indiana - 4.3%**

Kentucky - 4.9%

Michigan - 4.5%

Ohio - 4.5%

Source: U.S. Department of Labor, Bureau of Labor Statistics

### Unemployment Rank by County (of 92 counties): September 2024

#5 - Greene (5.2%)

#7 - Orange (5.2%)

#12 - Lawrence (5%)

#22 - Owen (4.6%)

#51 - Monroe (3.9%)

#56 - Brown (3.8%)

#91 - Daviess (3.2%)

#92 - Martin (3.2%)

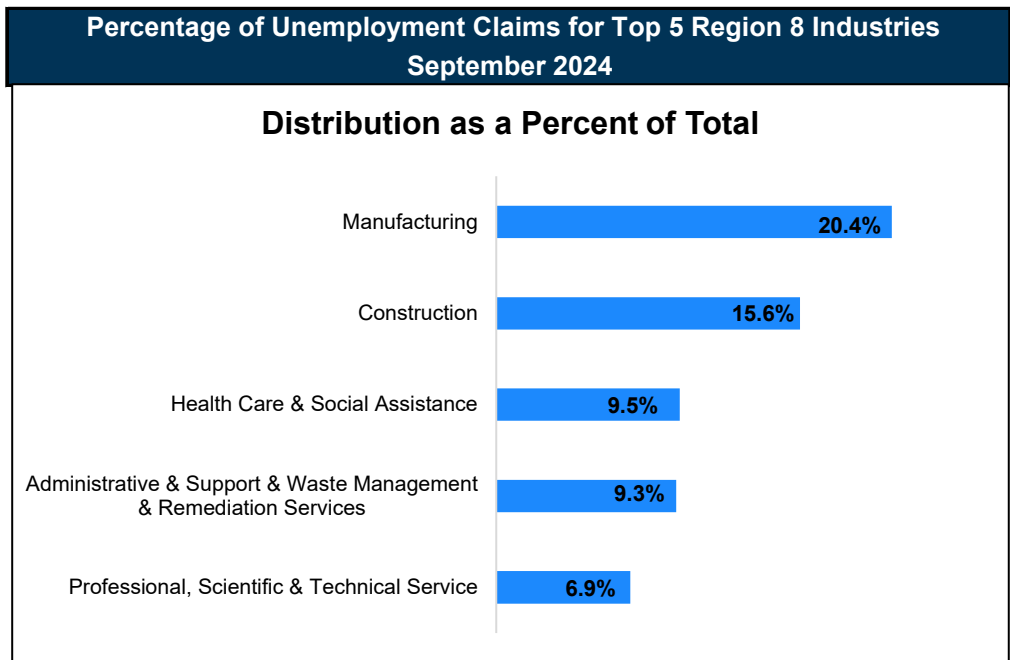
Source: Indiana Department of Workforce Development, Research and Development, Local Area Unemployment Statistics

September 2024 Labor Force Estimates (not seasonally adjusted)						
Area	Labor Force	Employed	Unemployed	Sep-24	Aug-24	Sep-23
U.S.	168,569,000	162,046,000	6,524,000	3.9%	4.4%	3.6%
IN	3,464,742	3,317,166	147,576	4.3%	4.5%	3.0%
EGR 8	156,405	149,886	6,519	4.2%	4.5%	2.9%
Bloomington MSA	81,764	78,507	3,257	4.0%	4.5%	2.9%
Brown Co.	8,187	7,873	314	3.8%	3.8%	2.8%
Daviess Co.	17,815	17,245	570	3.2%	3.4%	2.1%
Greene Co.	13,899	13,170	729	5.2%	5.3%	3.5%
Lawrence Co.	20,903	19,865	1,038	5.0%	5.2%	3.3%
Martin Co.	5,452	5,275	177	3.2%	3.3%	2.6%
Monroe Co.	72,144	69,325	2,819	3.9%	4.5%	2.9%
Orange Co.	8,385	7,951	434	5.2%	5.1%	3.1%
Owen Co.	9,620	9,182	438	4.6%	4.7%	3.3%
Bloomington	39,418	37,826	1,592	4.0%	5.0%	3.0%

Source: Indiana Department of Workforce Development, Research & Analysis, Local Area Unemployment Statistics | Unemployment Statistics Released: 10/24 | Notes: The data displayed are presented as estimates only. The most recent month's data are always preliminary and are revised when the next month's data are released.

Consumer Price Index (CPI-U Change), Unadjusted Percent Change to September 2024 from				
CPI Item	Sep-23	Aug-24	Sep-23	Aug-24
	U.S. City		Midwest Region*	
All Items	2.4%	0.2%	2.5%	0.0%
Food & Beverages	2.2%	0.4%	2.0%	0.5%
Housing	4.1%	0.3%	4.8%	0.1%
Apparel	1.8%	2.9%	2.0%	4.1%
Transportation	-1.1%	-0.7%	-1.7%	-1.1%
Medical Care	3.3%	0.3%	2.3%	0.4%
Recreation	0.7%	-0.4%	0.1%	-1.5%
Education & Communication	0.9%	0.2%	0.8%	0.1%
Other Goods & Services	3.5%	0.2%	6.8%	0.5%

\*Midwest region = Midwest Urban Average. Midwest Region includes Illinois, Indiana, Iowa, Kansas, Michigan, Minnesota, Missouri, Nebraska, North Dakota, Ohio, South Dakota and Wisconsin | Source: U.S. Bureau of Labor Statistics



Source: Indiana Department of Workforce Development, Research and Analysis

## WARN Notices

WARN Notices for Region 8 for September 2024				
Company	City	County	# of workers affected	Notice Date

**There are no WARN Notices for September 2024 for EGR 8.**

Source: Indiana Department of Workforce Development, WARN Notices | For information on WARN Act requirements, you may go to the U.S. Department of Labor Employment Training Administration Fact Sheet:

<https://www.doleta.gov/programs/factsht/warn.htm>

### Unemployment Claims: September 2024

#### Region 8

##### Initial Claims

09/07/24 - 47(D)  
09/14/24 - 53(D)  
09/21/24 - 41(D)  
09/28/24 - 53(D)

##### Continued Claims

09/07/24 - 579  
09/14/24 - 545  
09/21/24 - 543  
09/28/24 - 533

##### Total Claims

09/07/24 - 626  
09/14/24 - 598  
09/21/24 - 584  
09/28/24 - 586

#### State of Indiana

##### Initial Claims

09/07/24 - 3,195  
09/14/24 - 3,045  
09/21/24 - 2,640  
09/28/24 - 3,297

##### Continued Claims

09/07/24 - 21,060  
09/14/24 - 20,311  
09/21/24 - 20,383  
09/28/24 - 23,703

##### Total Claims

09/07/24 - 24,255  
09/14/24 - 23,356  
09/21/24 - 23,023  
09/28/24 - 27,000

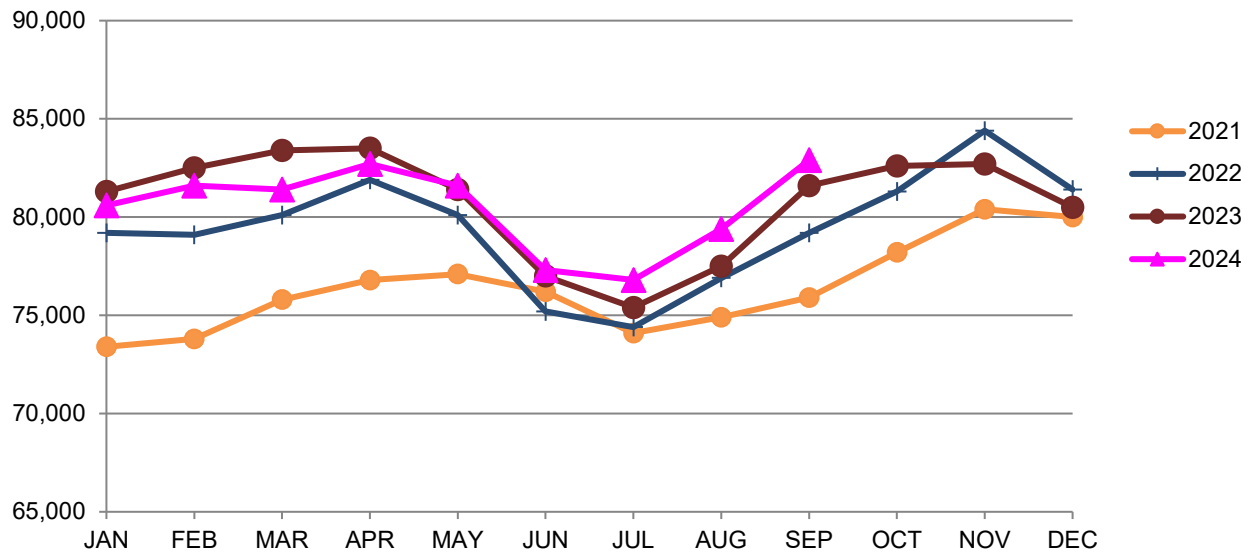
(D) indicates item is affected by non-disclosure issues relating to industry or ownership status |

\*Numbers subject to weekly revision Source: Indiana Department of Workforce Development, Research and Development

Bloomington MSA							
Wage and Salaried Employment	September 2024			# Change	% Change	# Change	% Change
Industry	Sep-24	Aug-24	Sep-23	Aug-24 to Sep-24	Sep-23 to Sep-24	Sep-23 to Sep-24	
<b>Total Nonfarm</b>	<b>82,900</b>	<b>79,400</b>	<b>81,600</b>	<b>3,500</b>	<b>4.4%</b>	<b>1,300</b>	<b>1.6%</b>
<b>Total Private</b>	<b>58,300</b>	<b>58,300</b>	<b>57,400</b>	<b>0</b>	<b>0.0%</b>	<b>900</b>	<b>1.6%</b>
Goods Producing	14,600	14,600	14,400	0	0.0%	200	1.4%
Service-Providing	68,300	64,800	67,200	3,500	5.4%	1,100	1.6%
Private Service Providing	43,700	43,700	43,000	0	0.0%	700	1.6%
Mining, Logging and Construction	3,600	3,600	3,300	0	0.0%	300	9.1%
Manufacturing	11,000	11,000	11,100	0	0.0%	-100	-0.9%
Durable Goods	6,200	6,300	6,300	-100	-1.6%	-100	-1.6%
Trade, Transportation, and Utilities	10,100	10,000	10,100	100	1.0%	0	0.0%
Wholesale Trade	2,100	2,100	2,000	0	0.0%	100	5.0%
Retail Trade	6,700	6,600	6,800	100	1.5%	-100	-1.5%
Transportation, Warehousing, and Utilities	1,300	1,300	1,300	0	0.0%	0	0.0%
Information	700	700	700	0	0.0%	0	0.0%
Financial Activities	3,100	3,100	3,100	0	0.0%	0	0.0%
Professional and Business Services	5,900	6,000	5,800	-100	-1.7%	100	1.7%
Education and Health Services	11,900	11,800	11,600	100	0.9%	300	2.6%
Leisure and Hospitality	9,400	9,400	9,200	0	0.0%	200	2.2%
Other Services	2,600	2,700	2,500	-100	-3.7%	100	4.0%
<b>Total Government</b>	<b>24,600</b>	<b>21,100</b>	<b>24,200</b>	<b>3,500</b>	<b>16.6%</b>	<b>400</b>	<b>1.7%</b>
Federal Government	300	300	300	0	0.0%	0	0.0%
State Government	18,700	15,200	18,600	3,500	23.0%	100	0.5%
Local Government	5,600	5,600	5,300	0	0.0%	300	5.7%
Local Government Educational Services	2,800	2,700	2,700	100	3.7%	100	3.7%
Local Government excluding Educational Services	2,800	2,900	2,600	-100	-3.5%	200	7.7%

Source: Indiana Dept of Workforce Development, Research and Analysis, Current Employment Statistics

### Bloomington MSA Employment Trends



Source: Indiana Department of Workforce Development, Research & Analysis, Current Employment Statistics | Note: Historical data for the most recent 4 years (both seasonally adjusted and not seasonally adjusted) are revised near the beginning of each calendar year, prior to the release of January estimates for statewide data.

Frequently Listed Jobs	
Top 20 job listings in Region 8 in the past month	
Rank	Occupations
1	Engineers, All Other
2	Nursing Assistants
3	Registered Nurses
4	Physical Therapists
5	Licensed Practical and Licensed Vocational Nurses
6	Manufacturing Engineers
7	Communications Equipment Operators, All Other
8	Managers, All Other
9	Tax Preparers
10	Claims Adjusters, Examiners, and Investigators
11	Secretaries and Administrative Assistants, Except Legal, Medical, and Executive
12	Insurance Underwriters
13	Occupational Therapists
14	Customer Service Representatives
15	Cooks, Institution and Cafeteria
16	Production Workers, All Other
17	Assemblers and Fabricators, All Other
18	Bus Drivers, Transit and Intercity
19	Maids and Housekeeping Cleaners
20	First-Line Supervisors of Office and Administrative Support Workers

Applicant Pool	
Top 20 occupations desired by applicants on their resumes in the past 12 months	
Occupations	# of applicants
Production Workers, All Other	292
Assemblers and Fabricators, All Other	278
Heavy and Tractor-Trailer Truck Drivers	197
Helpers--Production Workers	162
Cashiers	151
Laborers and Freight, Stock, and Material Movers, Hand	143
Construction Laborers	141
Customer Service Representatives	132
Office Clerks, General	130
Extraction Workers, All Other	115
Welders, Cutters, Solderers, and Brazers	107
Construction and Related Workers, All Other	96
Managers, All Other	94
Office and Administrative Support Workers, All Other	91
Receptionists and Information Clerks	87
Retail Salespersons	81
Landscaping and Groundskeeping Workers	75
Carpenters	71
Executive Secretaries and Executive Administrative Assistants	70
Operating Engineers and Other Construction Equipment Operators	70

Source: Indiana Workforce Development, Indiana Career Connect

## New statewide coalition aims to advance entrepreneurship

Friday, October 11, 2024 06:00 AM EDT

By [Alex Brown](#)



**INDIANAPOLIS** - A national not-for-profit dedicated to championing entrepreneurship as a civic priority launched an initiative on Thursday aimed at boosting entrepreneurship throughout Indiana. During an event at the 16 Tech Innovation District in downtown Indianapolis, Right to Start announced the Indiana Starters Coalition—comprised of eight founding member organizations from around the state—with the goal of finding ways to lower barriers to entrepreneurship.

“They are vital both to the evolution of the coalition and to ensuring that entrepreneurship is prioritized and facilitated everywhere throughout the state,” said Courtney Zaugg, Right to Start’s coalition manager for the eastern United States.

Zaugg told Inside INdiana Business that the coalition is focusing on supporting entrepreneurs from all industry types.

“This covers everything. You can be in Pike County and have a restaurant, and you still have similar barriers to folks in Fishers that are developing a SaaS product,” Zaugg said. “That is truly the focus: to be the voice of entrepreneurs to lower barriers to entrepreneurship.”

In addition to Right to Start, the founding members of the Indiana Starters Coalition are:

- **Elmer Buchta Technology Center (Southern Indiana)**
- **Launch Fishers and the Indiana IoT Lab (Fishers)**
- **MatchBOX Coworking Studio (Lafayette)**
- **Muncie Innovation Connector (East Central Indiana)**
- **Northeast Indiana Innovation Center (Northeast Indiana)**
- **16 Tech Innovation District (Central Indiana)**
- **The Dimension Mill (Bloomington)**
- **The Pantheon (Southwest Indiana).**

Zaugg said the coalition’s steering committee will work to identify barriers to starting new businesses, propose policies to remove those barriers, and engage communities throughout the state that have been historically excluded.

“They will come up with basically a charter and an agenda for what policymakers need to consider when they’re creating policy,” she said, “such as how many steps does it take to get a permit for X, Y and Z sector? How much does it cost? How can those systems be changed? And how, perhaps, can the fees be changed so it doesn’t negatively impact the state, but positively impacts entrepreneurs at the same time?”

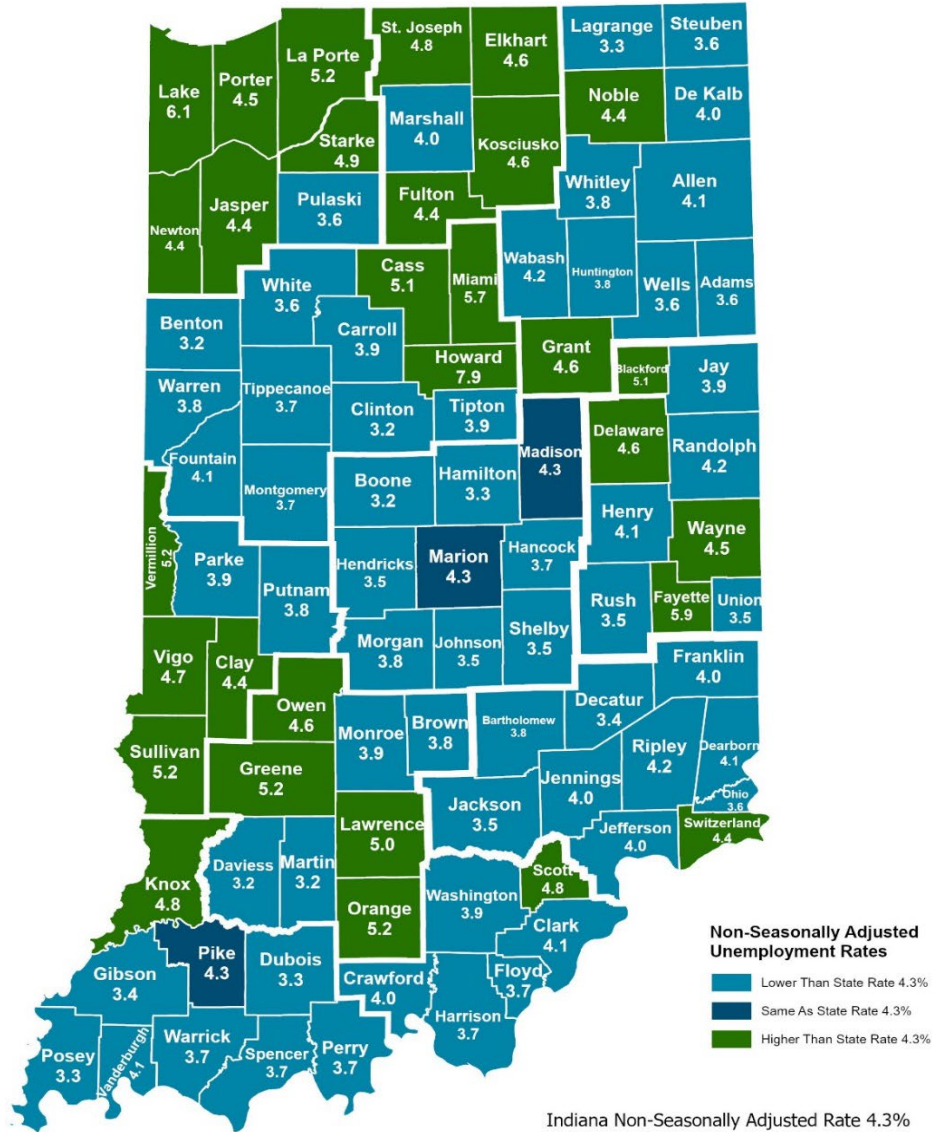
The early feedback from the state’s entrepreneurship community, Zaugg said, has been overwhelmingly positive. She said many have told her they’ve been waiting for an initiative like this. “Entrepreneurs are so busy; often they’re doing they’re building their businesses, and they’re giving back to the communities, but asking them to meet individually with policymakers and other organizations in the state that that impact their you know, the work of entrepreneurs is difficult,” she said. “We collectively need to come together and have a voice that’s being shared with the powers of influence.”

Right to Start launched a similar coalition in Arkansas earlier this year and has plans for efforts in four other states in 2025.

“Indiana has enormous potential for new business growth in every community in the state,” Right to Start CEO Victor Hwang said in a news release. “To achieve that potential, there must be a robust environment to support and encourage entrepreneurship. The Indiana Starters Coalition is a crucial catalyst for that. It will focus on making the process of starting a business easier by changing the civic landscape for the benefit of all.”

Zaugg said the coalition aims to start working with lawmakers in the 2025 legislative session at the Indiana Statehouse, though specific issues of concern have not yet been identified.

## County Unemployment Rates September 2024



Indiana Non-Seasonally Adjusted Rate 4.3%  
 Indiana Seasonally Adjusted Rate 4.3%  
 Source: DWD, Local Area Unemployment Statistics



INDIANA DEPARTMENT OF  
**WORKFORCE**  
 DEVELOPMENT

### Questions?

Please contact the DWD  
 Regional Workforce  
 Analyst listed below:

**Cassie Janes**

Research and Analysis

[Indiana Department of  
 Workforce Development](https://www.in.gov/dwd/)

[cjanes@dwd.in.gov](mailto:cjanes@dwd.in.gov)