

INDUSTRY SECTOR SNAPSHOT

Economic Growth Region 8

Quarter 3 2025

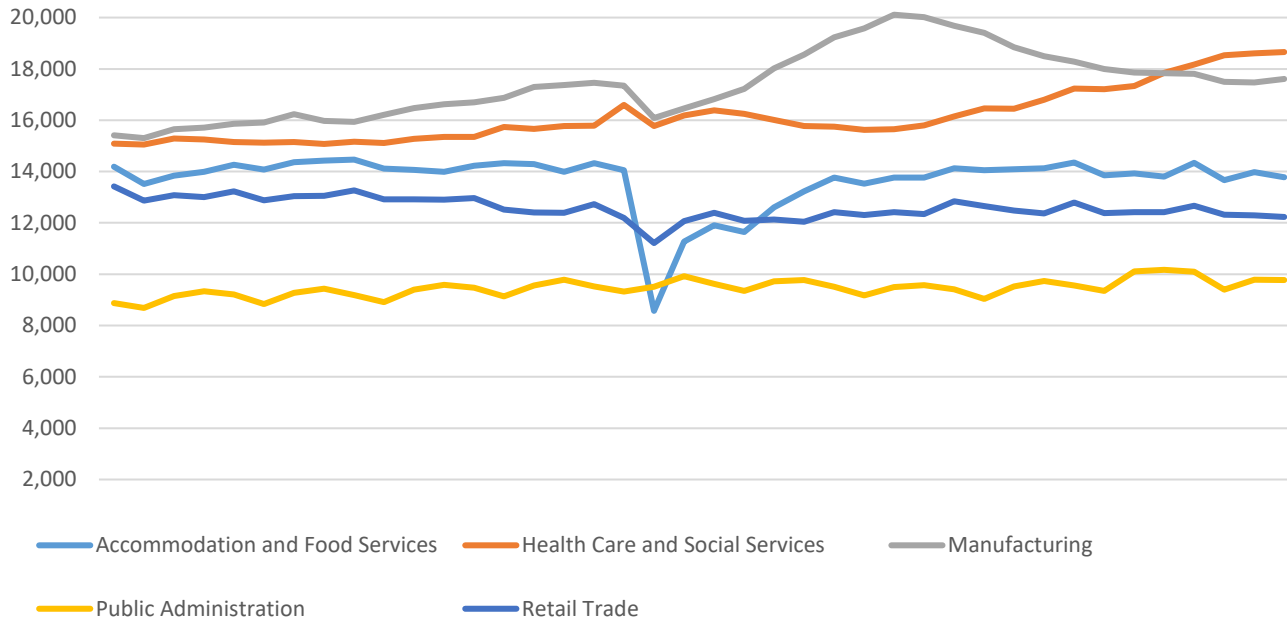
Brown, Daviess, Greene, Lawrence, Martin, Monroe, Orange, and Owen Counties

Industry	Jobs	Previous Year	Establishments	Previous Year	Average Weekly Wage	Previous Year
Total	125,350	↑ 0.86%	6,879	↑ 2.86%	\$1,136	↑ 4.41%
Accommodation and Food Services	13,782	↓ -0.17%	651	↑ 1.24%	\$471	↑ 4.20%
Admin. & Support & Waste Mgt. & Rem. Services	3,296	↑ 8.03%	414	↑ 28.97%	\$909	↑ 13.91%
Agriculture, Forestry, Fishing and Hunting*	637	↑ 1.92%	113	↑ 0.89%	\$942	↑ 7.53%
Arts, Entertainment, and Recreation*	1,156	↑ 4.62%	103	↑ 4.04%	\$448	↓ -2.40%
Construction	7,535	↑ 9.60%	743	↑ 1.23%	\$1,322	↑ 8.36%
Educational Services*	3,239	↑ 2.08%	161	○ 0.00%	\$825	↓ -1.55%
Finance and Insurance	2,558	↓ -0.58%	374	↓ -0.53%	\$1,346	↑ 3.86%
Health Care and Social Services	18,656	↑ 4.53%	649	↓ -0.31%	\$1,176	↑ 7.40%
Information*	1,220	↓ -4.69%	118	○ 0.00%	\$1,167	↑ 0.69%
Management of Companies and Enterprises*	613	↑ 4.43%	39	↑ 5.41%	\$2,368	↑ 1.63%
Manufacturing	17,608	↓ -1.26%	359	↑ 1.13%	\$1,319	↑ 3.13%
Mining*	448	↑ 0.90%	32	↑ 10.34%	\$1,277	↑ 7.67%
Other Services (Except Public Administration)	3,215	↑ 0.31%	504	↑ 4.56%	\$854	↑ 6.35%
Professional, Scientific, and Technical Services	6,149	↑ 5.65%	754	↑ 7.71%	\$1,514	↑ 5.14%
Public Administration	9,767	↓ -3.96%	134	↓ -0.74%	\$1,524	↑ 1.33%
Real Estate and Rental and Leasing*	1,377	↓ -1.50%	287	↑ 2.14%	\$996	↑ 3.64%
Retail Trade	12,232	↓ -1.45%	881	↓ -1.67%	\$655	↑ 5.31%
Transportation & Warehousing	3,152	↓ -0.16%	247	↑ 2.07%	\$1,171	↑ 4.09%
Utilities*	619	↑ 0.65%	43	○ 0.00%	\$2,159	↑ 6.56%
Wholesale Trade	2,883	↓ -0.62%	273	○ 0.00%	\$1,433	↑ 6.31%

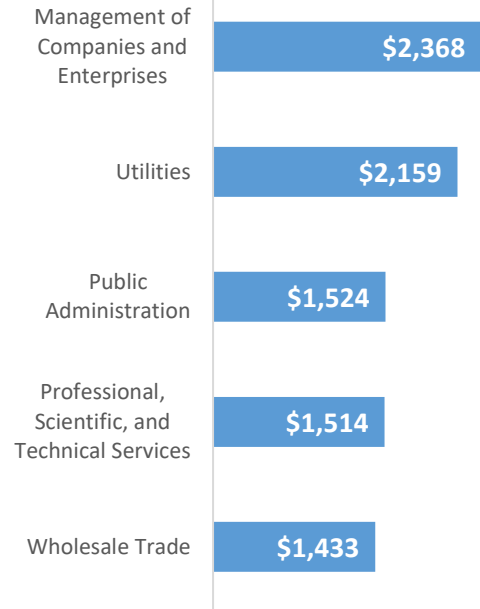
* These industries exclude county data (jobs and wages) that are not available due to non-disclosure requirements.

D = This item is not available due to non-disclosure requirements.

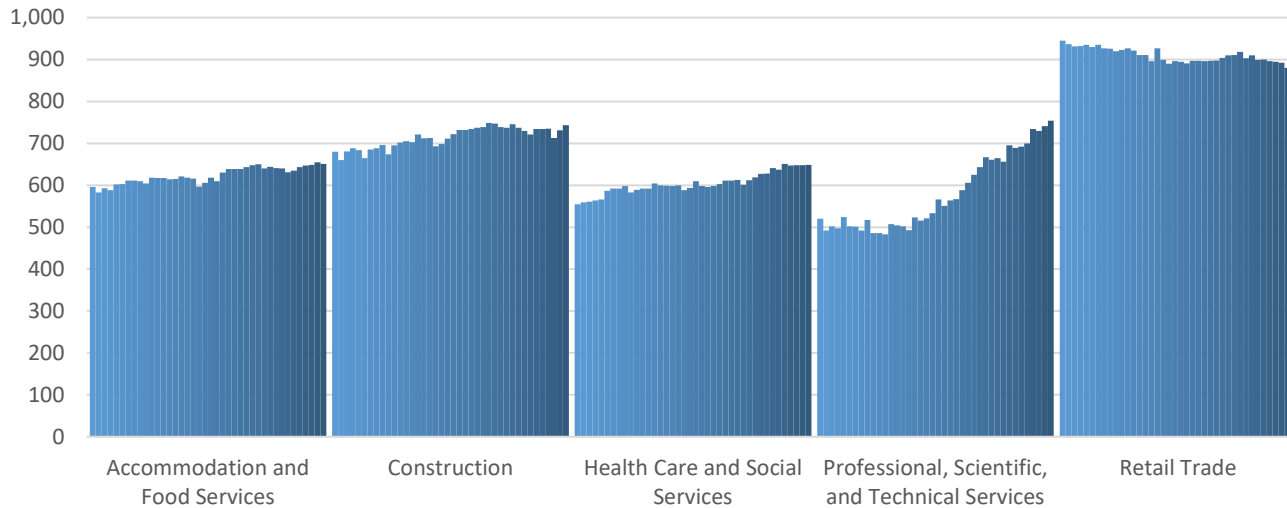
Top 5 Largest Industries by Jobs (past 10 years)



Top 5 Paying Industries by Average Weekly Wage



Top 5 Largest Industries by Establishments (past 10 years)



Source:

Quarterly Census of Employment and Wages, Indiana Dept. of Workforce Development

For more information, contact:

Cassie Janes

Regional Workforce Analyst

cjanes@dwd.in.gov

