



# HOOSIERS BY THE NUMBERS

Your premier source for labor market information for Indiana.

**DWD**

INDIANA DEPARTMENT OF  
**WORKFORCE**  
DEVELOPMENT

LABOR MARKET REVIEW



**February 2026  
Labor Market Review**

**Reported by: Cassie Janes**

Regional Workforce Analyst

[Email Cassie](mailto:cjanes@dwd.in.gov)

[cjanes@dwd.in.gov](mailto:cjanes@dwd.in.gov)

**DWD**

INDIANA DEPARTMENT OF  
**WORKFORCE**  
DEVELOPMENT

## Economic Growth Region 6

Statistical Data Report for February 2026, Released April 2026

### State Employment and Unemployment

Unemployment rates were higher in February in 1 state and stable in 49 states and the District of Columbia, the U.S. Bureau of Labor Statistics reported. Thirteen states and the District had jobless rate increases from a year earlier, 2 states had decreases, and 35 states had little change. The national unemployment rate, 4.4 percent, changed little over the month but was 0.2 percentage point higher than in February 2025.

In February 2026, nonfarm payroll employment decreased in 2 states, increased in 1 state, and was essentially unchanged in 47 states and the District of Columbia. Over the year, nonfarm payroll employment decreased in 2 states and the District, increased in 2 states, and was essentially unchanged in 46 states.

Hawaii and South Dakota had the lowest jobless rates in February, 2.3 percent each. The District of Columbia had the highest unemployment rate, 6.5 percent. The next highest rates were in California and Delaware, 5.4 percent each. In total, 21 states had unemployment rates lower than the U.S. figure of 4.4 percent, 6 states and the District had higher rates, and 23 states had rates that were not appreciably different from that of the nation.



### Economic Growth Region (EGR) 6

Blackford, Delaware, Fayette, Henry, Jay, Randolph, Rush, Union, and Wayne Counties

### Unemployment Rates by State (seasonally adjusted): February 2026

**U.S. - 4.4%**

Illinois - 5%

**Indiana - 3.3%**

Kentucky - 4.2%

Michigan - 5%

Ohio - 4.2%

Source: U.S. Department of Labor, Bureau of Labor Statistics

### Unemployment Rank by County (of 92 counties): February 2026

#10 - Blackford (4.4%)

#14 - Delaware (4.3%)

#15 - Fayette (4.3%)

#26 - Randolph (4%)

#29 - Henry (3.9%)

#31 - Wayne (3.9%)

#44 - Rush (3.7%)

#53 - Jay (3.6%)

#92 - Union (2.9%)

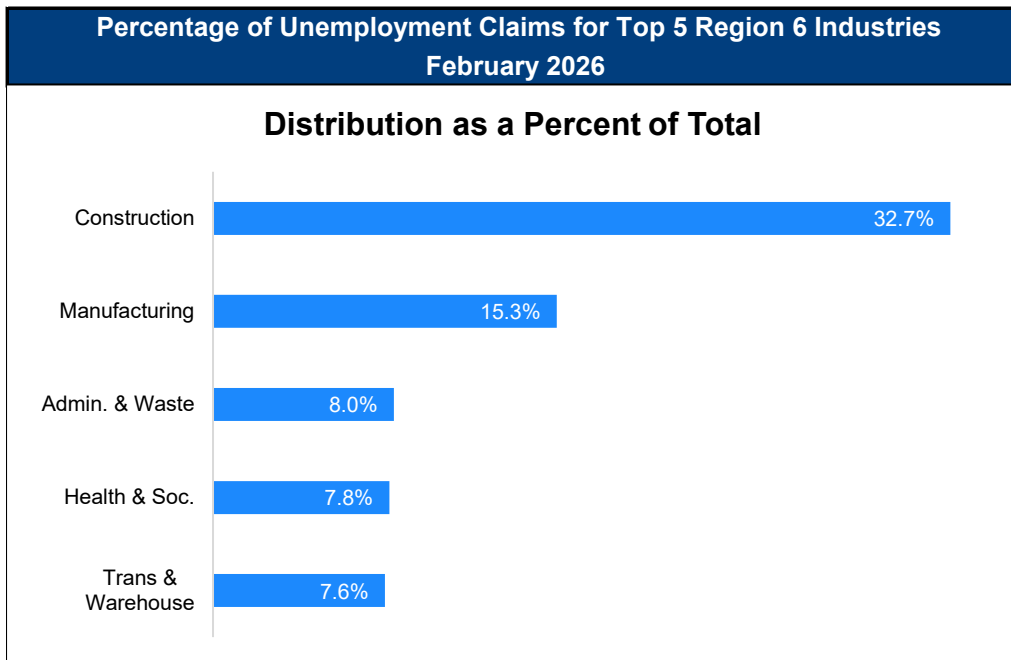
Source: Indiana Department of Workforce Development, Research and Development, Local Area Unemployment Statistics

February 2026 Labor Force Estimates (not seasonally adjusted)						
Area	Labor Force	Employed	Unemployed	Feb-26	Jan-26	Feb-25
U.S.	170,206,000	162,153,000	8,052,000	4.7%	4.7%	4.5%
IN	3,461,067	3,330,356	130,711	3.8%	3.3%	4.3%
EGR 6	155,038	148,808	6,230	4.0%	3.4%	4.4%
Muncie MSA	52,897	50,634	2,263	4.3%	3.7%	4.7%
Blackford Co.	5,095	4,869	226	4.4%	4.4%	5.0%
Delaware Co.	52,897	50,634	2,263	4.3%	3.7%	4.7%
Fayette Co.	10,208	9,770	438	4.3%	3.5%	4.5%
Henry Co.	22,378	21,507	871	3.9%	3.4%	4.3%
Jay Co.	9,258	8,928	330	3.6%	2.9%	3.9%
Randolph Co.	12,050	11,572	478	4.0%	3.4%	4.9%
Rush Co.	8,272	7,964	308	3.7%	3.0%	3.8%
Union Co.	4,053	3,935	118	2.9%	2.4%	3.0%
Wayne Co.	30,827	29,629	1,198	3.9%	3.3%	4.4%
Connersville	5,563	5,312	251	4.5%	3.6%	4.8%
Muncie	29,992	28,625	1,367	4.6%	3.8%	4.9%
New Castle	8,215	7,918	297	3.6%	3.2%	3.8%
Richmond	15,528	14,899	629	4.1%	3.4%	4.7%

Source: Indiana Department of Workforce Development, Research & Analysis, Local Area Unemployment Statistics | Unemployment Statistics Released: 04/26 | Notes: The data displayed are presented as estimates only. The most recent month's data are always preliminary and are revised when the next month's data are released.

Consumer Price Index (CPI-U Change), Unadjusted Percent Change to February 2026 from				
CPI Item	Feb-25	Jan-26	Feb-25	Jan-26
	U.S. City		Midwest Region*	
<b>All Items</b>	<b>2.4%</b>	<b>0.5%</b>	<b>2.8%</b>	<b>0.6%</b>
Food & Beverages	3.0%	0.4%	3.0%	0.9%
Housing	3.3%	0.3%	4.6%	0.7%
Apparel	2.5%	4.2%	3.0%	4.2%
Transportation	-0.5%	0.8%	-1.6%	0.5%
Medical Care	3.4%	0.4%	3.7%	0.5%
Recreation	2.3%	0.2%	4.1%	0.4%
Education & Communication	0.1%	-0.2%	0.0%	-0.8%
Other Goods & Services	5.1%	0.1%	2.4%	0.1%

\*Midwest region = Midwest Urban Average. Midwest Region includes Illinois, Indiana, Iowa, Kansas, Michigan, Minnesota, Missouri, Nebraska, North Dakota, Ohio, South Dakota and Wisconsin | Source: U.S. Bureau of Labor Statistics



Source: Indiana Department of Workforce Development, Research and Analysis

## WARN Notices

WARN Notices for Region 6 for February 2026				
Company	City	County	# of workers affected	Notice Date

**There are no WARN Notices for February 2026 for EGR 6.**

Source: Indiana Department of Workforce Development, WARN Notices | For information on WARN Act requirements, you may go to the U.S. Department of Labor Employment Training Administration Fact Sheet:

<https://www.doleta.gov/programs/factsht/warn.htm>

## Unemployment Claims: February 2026

### Region 6

#### Initial Claims

02/07/26 - 174(D)

02/14/26 - 141(D)

02/21/26 - 90(D)

02/28/26 - 88(D)

#### Continued Claims

02/07/26 - 1,082

02/14/26 - 1,061

02/21/26 - 972

02/28/26 - 950

#### Total Claims

02/07/26 - 1,256

02/14/26 - 1,202

02/21/26 - 1,062

02/28/26 - 1,038

### State of Indiana

#### Initial Claims

02/07/26 - 4,025

02/14/26 - 2,941

02/21/26 - 2,469

02/28/26 - 2,514

#### Continued Claims

02/07/26 - 26,734

02/14/26 - 25,628

02/21/26 - 25,117

02/28/26 - 24,518

#### Total Claims

02/07/26 - 30,759

02/14/26 - 28,569

02/21/26 - 27,586

02/28/26 - 27,032

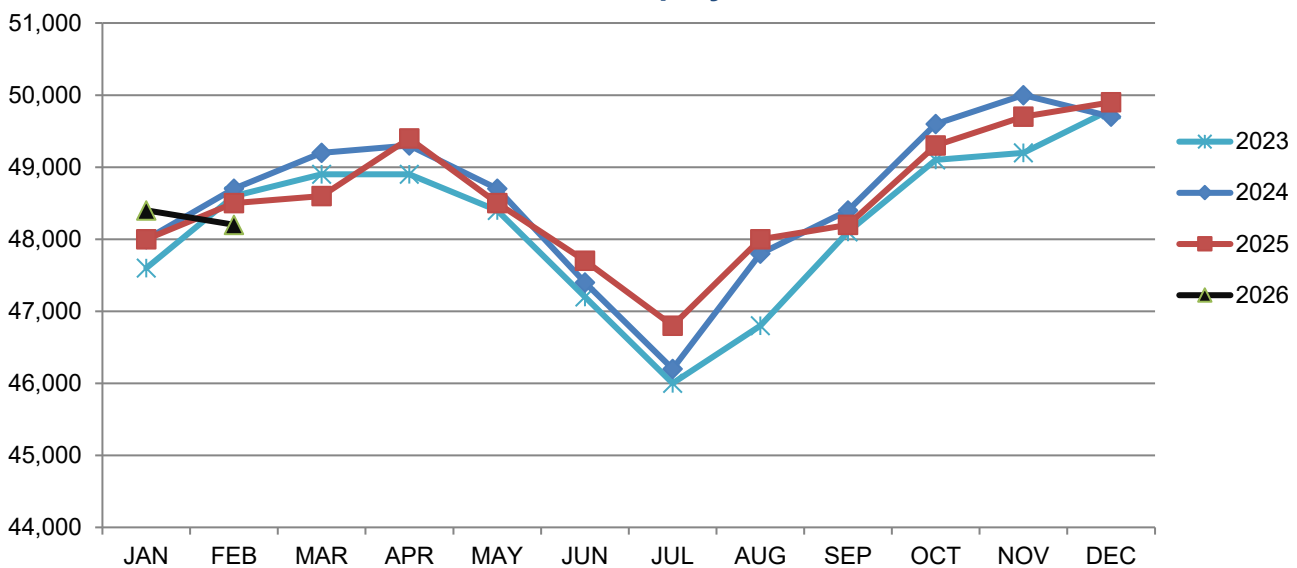
(D) indicates item is affected by non-disclosure issues relating to industry or ownership status |

Source: Indiana Department of Workforce Development, Research and Development

Muncie MSA							
Wage and Salaried Employment	February 2026			# Change	% Change	# Change	% Change
Industry	Feb-26	Jan-26	Feb-25	Jan-26 to Feb-26		Feb-25 to Feb-26	
<b>Total Nonfarm</b>	<b>48,200</b>	<b>48,400</b>	<b>48,500</b>	<b>-200</b>	<b>-0.4%</b>	<b>-300</b>	<b>-0.6%</b>
<b>Total Private</b>	<b>38,000</b>	<b>38,100</b>	<b>38,400</b>	<b>-100</b>	<b>-0.3%</b>	<b>-400</b>	<b>-1.0%</b>
Goods Producing	5,800	5,800	5,500	0	0.0%	300	5.5%
Service-Providing	42,400	42,600	43,000	-200	-0.5%	-600	-1.4%
Private Service Providing	32,200	32,300	32,900	-100	-0.3%	-700	-2.1%
Mining, Logging and Construction	1,600	1,600	1,500	0	0.0%	100	6.7%
Manufacturing	4,200	4,200	4,000	0	0.0%	200	5.0%
Trade, Transportation, and Utilities	8,000	8,100	8,400	-100	-1.2%	-400	-4.8%
Wholesale Trade	1,300	1,300	1,300	0	0.0%	0	0.0%
Retail Trade	5,700	5,700	5,900	0	0.0%	-200	-3.4%
Transportation, Warehousing, and Utilities	1,000	1,100	1,200	-100	-9.1%	-200	-16.7%
Information	300	300	400	0	0.0%	-100	-25.0%
Financial Activities	2,300	2,300	2,400	0	0.0%	-100	-4.2%
Education and Health Services	10,200	10,200	10,200	0	0.0%	0	0.0%
Leisure and Hospitality	5,000	4,900	5,200	100	2.0%	-200	-3.9%
Other Services	2,200	2,200	2,100	0	0.0%	100	4.8%
Government	10,200	10,300	10,100	-100	-1.0%	100	1.0%
State Government	6,400	6,500	6,000	-100	-1.5%	400	6.7%
State Government Educational Services	6,200	6,300	5,800	-100	-1.6%	400	6.9%
State Government Excluding Education	200	200	200	0	0.0%	0	0.0%
Local Government	3,800	3,700	3,700	100	2.7%	100	2.7%
Local Government Educational Services	2,200	2,100	2,100	100	4.8%	100	4.8%
Local Government excluding Educational Services	1,600	1,600	1,600	0	0.0%	0	0.0%

Source: Indiana Dept of Workforce Development, Research and Analysis, Current Employment Statistics

### Muncie MSA Employment Trends



Source: Indiana Department of Workforce Development, Research & Analysis, Current Employment Statistics | Note: Historical data for the most recent 4 years (both seasonally adjusted and not seasonally adjusted) are revised near the beginning of each calendar year, prior to the release of January estimates for statewide data.

<b>Frequently Listed Jobs</b>	
<b>Top 20 job listings by number of postings in Region 6 in the past month</b>	
<b>Rank</b>	<b>Occupations</b>
1	Registered Nurses
2	Heavy and Tractor-Trailer Truck Drivers
3	Retail Salespersons
4	Home Health and Personal Care Aides
5	Physicians, All Other
6	Licensed Practical and Licensed Vocational Nurses
7	First-Line Supervisors of Retail Sales Workers
8	Food Service Managers
9	Maintenance and Repair Workers, General
10	Food Preparation Workers
11	Production Workers, All Other
12	Family Medicine Physicians
13	Nursing Assistants
14	Medical and Health Services Managers
15	Fast Food and Counter Workers
16	Janitors and Cleaners, Except Maids and Housekeeping Cleaners
17	Customer Service Representatives
18	Driver/Sales Workers
19	General and Operations Managers
20	Laborers and Freight, Stock, and Material Movers, Hand

Source: Lightcast

<b>Applicant Pool</b>	
<b>Top 20 occupations desired by applicants on their resumes in the past 12 months</b>	
<b>Occupations</b>	<b># of applicants</b>
Production Workers, All Other	320
Assemblers and Fabricators, All Other	196
Customer Service Representatives	148
Helpers--Production Workers	129
Cashiers	98
Laborers and Freight, Stock, and Material Movers, Hand	95
Office Clerks, General	88
Heavy and Tractor-Trailer Truck Drivers	66
Office and Administrative Support Workers, All Other	64
Team Assemblers	58
Extraction Workers, All Other	56
Industrial Truck and Tractor Operators	52
Construction Laborers	51
Managers, All Other	50
Retail Salespersons	48
Inspectors, Testers, Sorters, Samplers, and Weighers	47
First-Line Supervisors of Production and Operating Workers	44
Janitors and Cleaners, Except Maids and Housekeeping Cleaners	42
General and Operations Managers	40
Waiters and Waitresses	40

Source: Indiana Workforce Development, Indiana Career Connect

BREAKDOWN

# February Indiana Labor Force

Released April 22, 2026



## Total Population

# 6,973,333



**Labor Force (Age 16+)**  
**3,498,263**



**Not in the Labor Force (Age 16+)**  
**1,978,900**

**Employed**  
**3,382,822**

Source: Local Area Unemployment Statistics, February 2026, Bureau of Labor Statistics

**Unemployed (Seeking)**  
**115,441**

**Do Not Want a Job**  
**1,867,900**

Source: Local Area Unemployment Statistics, February 2026, Bureau of Labor Statistics

**Want a Job (Not Seeking)**  
**111,000**

**Want a Job (Available to Work Now)**  
**38,600**

## Potential Workers

(Unemployed and Seeking a Job + Not in the Labor Force but Want a Job/Available to Work Now)

# 154,041

More about the US Bureau of Labor Statistics data sources used within:  
Local Area Unemployment Statistics (LAUS): Captures Indiana's labor force, which includes those currently employed and those who are unemployed and actively seeking work.  
Current Population Survey (CPS): Captures individuals not participating in Indiana's Labor Force. This set includes non-participants that do not want a job (i.e. retirees and students) and those that want a job but are not actively seeking work.  
U.S. Census Bureau, Indiana Population 2025

Resource: Notes on Using Current Population Survey (CPS) Subnational Data and Differences Between CPS and LAUS Estimates

