



September 2025 Labor Market Review

Reported by: Cassie Janes

Regional Workforce Analyst
[Email Cassie](mailto:cjanes@dwd.in.gov)
cjanes@dwd.in.gov

Economic Growth Region 6

Statistical Data Report for September 2025, Released December 2025

State Employment and Unemployment

Unemployment rates were higher in September in 8 states, lower in 2 states, and stable in 40 states and the District of Columbia, the U.S. Bureau of Labor Statistics reported. Eighteen states and the District had jobless rate increases from a year earlier, 9 states had decreases, and 23 states had little change. South Dakota had the lowest jobless rate in September, 2.0 percent. The District of Columbia had the highest unemployment rate, 6.2 percent. The next highest rate was in California, 5.6 percent. The national unemployment rate, 4.4 percent, changed little over the month but was 0.3 percentage point higher than in September 2024. Eighteen states and the District of Columbia had unemployment rate increases from September 2024, the largest of which was in Oregon (+1.0 percentage point). Nine states had over-the-year rate decreases, the largest of which was in Indiana (-0.7 percentage point).

In September 2025, nonfarm payroll employment increased in 1 state, decreased in 1 state, and was essentially unchanged in 48 states and the District of Columbia. Over the year, nonfarm payroll employment increased in 15 states and was essentially unchanged in 35 states and the District.



Economic Growth Region (EGR) 6

Blackford, Delaware, Fayette, Henry, Jay, Randolph, Rush, Union, and Wayne Counties

Unemployment Rates by State (seasonally adjusted): September 2025

U.S. - 4.4%

Illinois - 4.4%

Indiana - 3.7%

Kentucky - 4.7%

Michigan - 5.1%

Ohio - 4.8%

Source: U.S. Department of Labor, Bureau of Labor Statistics

Unemployment Rank by County (of 92 counties): September 2025

#5 - Fayette (4.1%)

#10 - Delaware (3.9%)

#12 - Blackford (3.8%)

#24 - Wayne (3.7%)

#26 - Henry (3.6%)

#38 - Randolph (3.5%)

#45 - Jay (3.4%)

#50 - Rush (3.4%)

#92 - Union (2.6%)

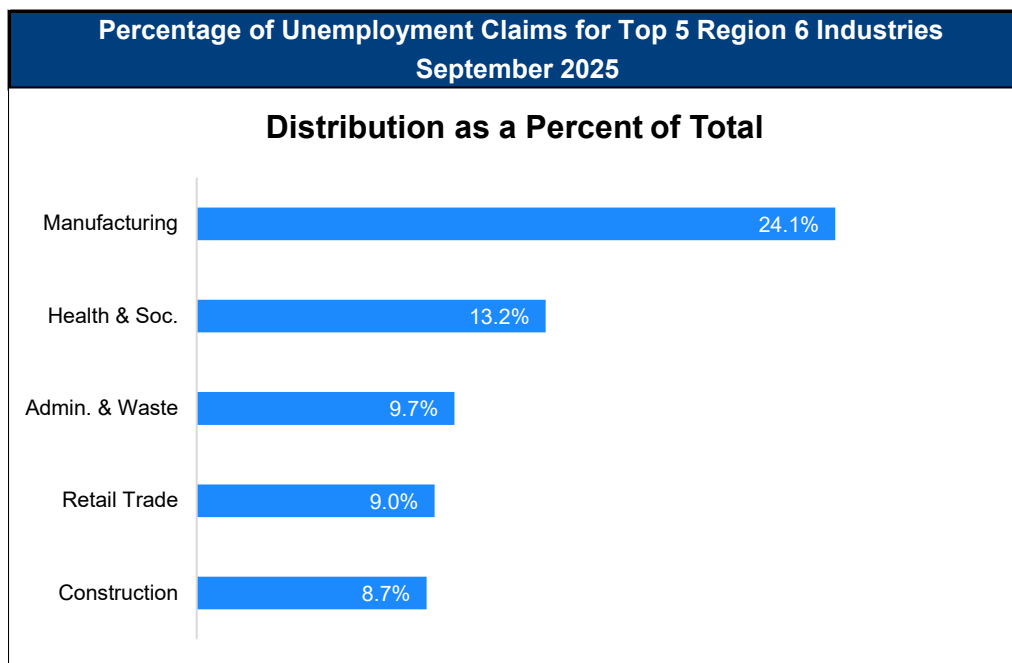
Source: Indiana Department of Workforce Development, Research and Development, Local Area Unemployment Statistics

September 2025 Labor Force Estimates (not seasonally adjusted)						
Area	Labor Force	Employed	Unemployed	Sep-25	Aug-25	Sep-24
U.S.	171,217,000	163,894,000	7,324,000	4.3%	4.5%	3.9%
IN	3,500,370	3,377,247	123,123	3.5%	3.8%	4.0%
EGR 6	156,419	150,634	5,785	3.7%	4.1%	4.0%
Muncie MSA	53,970	51,865	2,105	3.9%	4.6%	4.1%
Blackford Co.	5,186	4,988	198	3.8%	4.2%	4.3%
Delaware Co.	53,970	51,865	2,105	3.9%	4.6%	4.1%
Fayette Co.	10,256	9,839	417	4.1%	4.3%	4.4%
Henry Co.	22,504	21,691	813	3.6%	3.8%	3.8%
Jay Co.	9,297	8,978	319	3.4%	3.7%	3.3%
Randolph Co.	12,062	11,645	417	3.5%	3.7%	3.9%
Rush Co.	8,387	8,105	282	3.4%	3.6%	3.6%
Union Co.	4,201	4,092	109	2.6%	2.6%	2.8%
Wayne Co.	30,556	29,431	1,125	3.7%	4.0%	4.0%
Connersville	5,603	5,350	253	4.5%	4.8%	5.0%
Muncie	30,656	29,376	1,280	4.2%	5.2%	4.3%
New Castle	8,298	7,986	312	3.8%	4.0%	3.9%
Richmond	15,423	14,805	618	4.0%	4.3%	4.5%

Source: Indiana Department of Workforce Development, Research & Analysis, Local Area Unemployment Statistics | Unemployment Statistics Released: 10/25 | Notes: The data displayed are presented as estimates only. The most recent month's data are always preliminary and are revised when the next month's data are released.

Consumer Price Index (CPI-U Change), Unadjusted Percent Change to September 2025 from				
CPI Item	Sep-24	Aug-25	Sep-24	Aug-25
	U.S. City		Midwest Region*	
All Items	3.0%	0.3%	3.1%	0.3%
Food & Beverages	3.0%	0.3%	2.8%	0.2%
Housing	3.9%	0.1%	4.5%	0.2%
Apparel	-0.1%	2.6%	1.2%	4.1%
Transportation	1.7%	0.1%	0.5%	-0.5%
Medical Care	3.3%	0.2%	2.9%	0.5%
Recreation	3.0%	0.3%	4.7%	0.6%
Education & Communication	0.4%	0.2%	0.6%	0.7%
Other Goods & Services	4.1%	0.4%	3.3%	0.9%

*Midwest region = Midwest Urban Average. Midwest Region includes Illinois, Indiana, Iowa, Kansas, Michigan, Minnesota, Missouri, Nebraska, North Dakota, Ohio, South Dakota and Wisconsin | Source: U.S. Bureau of Labor Statistics



Source: Indiana Department of Workforce Development, Research and Analysis

WARN Notices

WARN Notices for Region 6 for September 2025				
Company	City	County	# of workers affected	Notice Date

There are no WARN Notices for September 2025 for EGR 6.

Source: Indiana Department of Workforce Development, WARN Notices | For information on WARN Act requirements, you may go to the U.S. Department of Labor Employment Training Administration Fact Sheet:

<https://www.doleta.gov/programs/factsht/warn.htm>

Unemployment Claims: September 2025

Region 6

Initial Claims

09/06/25 - 73(D)

09/13/25 - 75(D)

09/20/25 - 66(D)

09/27/25 - 65(D)

Continued Claims

09/06/25 - 695

09/13/25 - 682

09/20/25 - 668

09/27/25 - 659

Total Claims

09/06/25 - 768

09/13/25 - 757

09/20/25 - 734

09/27/25 - 724

State of Indiana

Initial Claims

09/06/25 - 2,348

09/13/25 - 2,652

09/20/25 - 2,456

09/27/25 - 2,285

Continued Claims

09/06/25 - 20,005

09/13/25 - 19,658

09/20/25 - 19,093

09/27/25 - 19,375

Total Claims

09/06/25 - 22,353

09/13/25 - 22,310

09/20/25 - 21,549

09/27/25 - 21,660

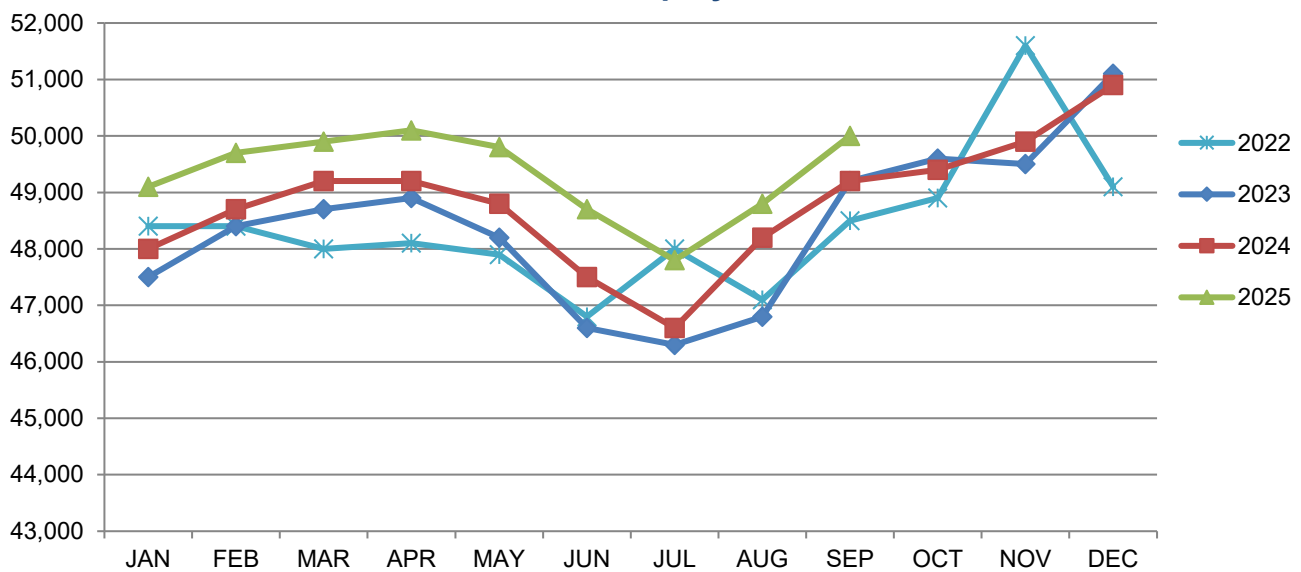
(D) indicates item is affected by non-disclosure issues relating to industry or ownership status |

Source: Indiana Department of Workforce Development, Research and Development

Muncie MSA							
Wage and Salaried Employment	September 2025			# Change	% Change	# Change	% Change
Industry	Sep-25	Aug-25	Sep-24	Aug-25 to Sep-25		Sep-24 to Sep-25	
Total Nonfarm	50,000	48,800	49,200	1,200	2.5%	800	1.6%
Total Private	39,300	39,400	39,000	-100	-0.3%	300	0.8%
Goods Producing	5,700	5,700	5,700	0	0.0%	0	0.0%
Service-Providing	44,300	43,100	43,500	1,200	2.8%	800	1.8%
Private Service Providing	33,600	33,700	33,300	-100	-0.3%	300	0.9%
Mining, Logging and Construction	1,700	1,700	1,700	0	0.0%	0	0.0%
Manufacturing	4,000	4,000	4,000	0	0.0%	0	0.0%
Trade, Transportation, and Utilities	8,400	8,400	8,300	0	0.0%	100	1.2%
Wholesale Trade	1,200	1,300	1,200	-100	-7.7%	0	0.0%
Retail Trade	6,000	5,900	5,900	100	1.7%	100	1.7%
Transportation, Warehousing, and Utilities	1,200	1,200	1,200	0	0.0%	0	0.0%
Information	400	400	400	0	0.0%	0	0.0%
Financial Activities	2,400	2,400	2,500	0	0.0%	-100	-4.0%
Education and Health Services	10,200	10,300	10,000	-100	-1.0%	200	2.0%
Leisure and Hospitality	5,500	5,600	5,500	-100	-1.8%	0	0.0%
Other Services	2,100	2,100	2,100	0	0.0%	0	0.0%
Government	10,700	9,400	10,200	1,300	13.8%	500	4.9%
State Government	3,900	3,600	6,100	300	8.3%	-2,200	-36.1%
State Government Educational Services	3,700	3,400	5,900	300	8.8%	-2,200	-37.3%
State Government Excluding Education	200	200	200	0	0.0%	0	0.0%
Local Government	3,800	3,800	3,800	0	0.0%	0	0.0%
Local Government Educational Services	2,300	2,200	2,200	100	4.6%	100	4.6%
Local Government excluding Educational Services	1,500	1,600	1,600	-100	-6.3%	-100	-6.3%

Source: Indiana Dept of Workforce Development, Research and Analysis, Current Employment Statistics

Muncie MSA Employment Trends



Source: Indiana Department of Workforce Development, Research & Analysis, Current Employment Statistics | Note: Historical data for the most recent 4 years (both seasonally adjusted and not seasonally adjusted) are revised near the beginning of each calendar year, prior to the release of January estimates for statewide data.

Frequently Listed Jobs	
Top 20 job listings by number of postings in Region 6 in the past month	
Rank	Occupations
1	Registered Nurses
2	Food Service Managers
3	Retail Salespersons
4	Heavy and Tractor-Trailer Truck Drivers
5	Respiratory Therapists
6	Maintenance and Repair Workers, General
7	Food Preparation Workers
8	Licensed Practical and Licensed Vocational Nurses
9	Home Health and Personal Care Aides
10	Physical Therapists
11	Substitute Teachers, Short-Term
12	First-Line Supervisors of Retail Sales Workers
13	Merchandise Displayers and Window Trimmers
14	Fast Food and Counter Workers
15	Physicians, All Other
16	Nursing Assistants
17	Customer Service Representatives
18	Radiologic Technologists and Technicians
19	Pharmacy Technicians
20	Nurse Practitioners

Source: Lightcast

Applicant Pool	
Top 20 occupations desired by applicants on their resumes in the past 12 months	
Occupations	# of applicants
Production Workers, All Other	361
Assemblers and Fabricators, All Other	260
Customer Service Representatives	183
Helpers--Production Workers	183
Cashiers	126
Laborers and Freight, Stock, and Material Movers, Hand	93
Office Clerks, General	91
Heavy and Tractor-Trailer Truck Drivers	86
Construction Laborers	78
Retail Salespersons	67
Managers, All Other	65
Team Assemblers	56
First-Line Supervisors of Production and Operating Workers	52
Industrial Truck and Tractor Operators	50
Welders, Cutters, Solderers, and Brazers	50
Carpenters	42
Landscaping and Groundskeeping Workers	39
Packers and Packagers, Hand	39
Construction and Related Workers, All Other	38
Receptionists and Information Clerks	38

Source: Indiana Workforce Development, Indiana Career Connect

SNAPSHOT

September Indiana Employment

Released December 11, 2025



Unemployment Rate

*seasonally adjusted

Unemployment Rate

3.7%

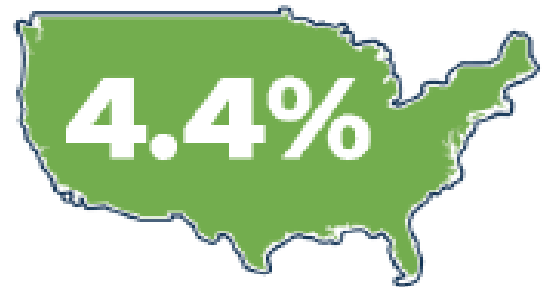


August 2025 Indiana

3.6%



National Unemployment Rate



LABOR FORCE PARTICIPATION RATE*

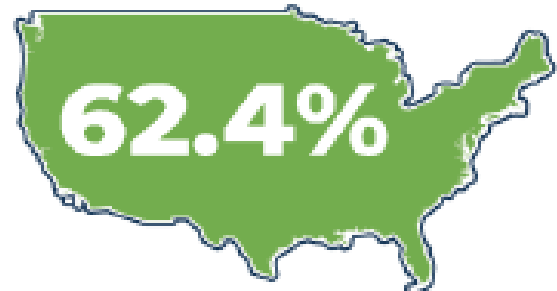
16+: **63.7%**

25-44: **85.1%**

25-54: **84.6%**



National Labor Force



Open Job Postings

88,436

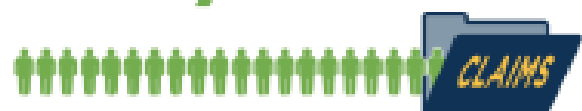
Jobs

As of September 26, 2025



Weekly UI Continued Claims

19,375

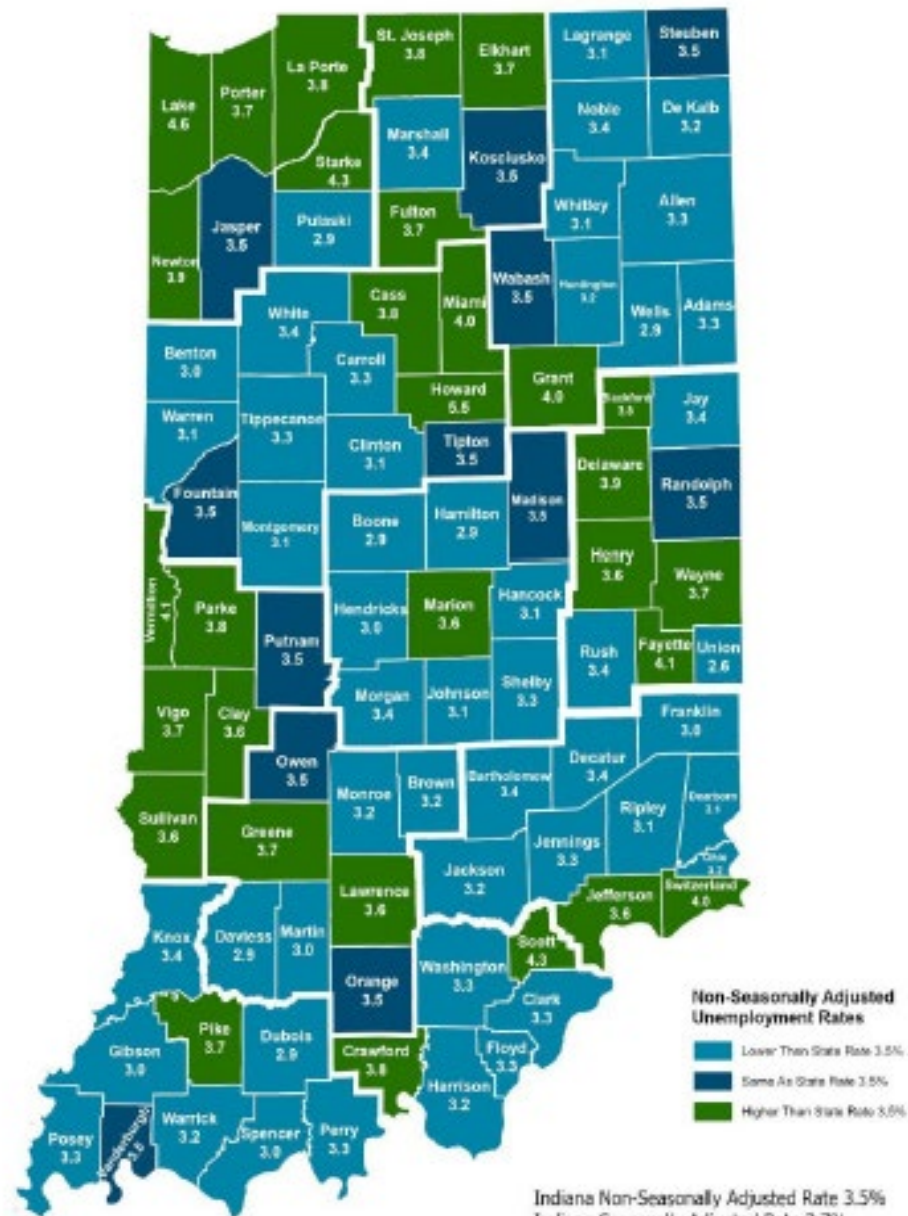


Filed Week Ending October 4, 2025

Source: Local Area Unemployment Statistics, Bureau of Labor Statistics; Indiana Career Connect

* The percentage of 16-year-olds and older who are either working or actively looking for work. Those not in the labor force include primarily students, retirees and other non-working populations, such as individuals unable to work due to a disability or illness, or adults responsible for their family's childcare needs.

County Unemployment Rates September 2025



Questions?

Please contact the
Regional Labor Analyst
listed below:

Cassie Janes

[Indiana Department of
Workforce Development
cjan@dw@in.gov](mailto:cjan@dw@in.gov)