



HOOSIERS BY THE NUMBERS

Your premier source for labor market information for Indiana.

DWD

INDIANA DEPARTMENT OF
WORKFORCE
DEVELOPMENT

LABOR MARKET REVIEW



July 2024
Labor Market Review

Reported by: Alex Corn

Regional Workforce Analyst

[Email Alex](#)

dcorn@dwd.in.gov

DWD

INDIANA DEPARTMENT OF
WORKFORCE
DEVELOPMENT

LABOR MARKET REVIEW

Economic Growth Region 5

Statistical Data Report for July 2024, Released September 2024

State Employment and Unemployment

STATE EMPLOYMENT AND UNEMPLOYMENT -- The unemployment rate of the State of Indiana in July stood at 4.0%, according to the Indiana Department of Workforce Development. By comparison, the national unemployment rate for July stands at 4.3%. In addition, Indiana's labor force participation rate of 62.5% is now .1% higher than it was in June but still slightly below the national rate of 62.7%. This rate is the percentage of Hoosiers 16 and older that are either working or actively looking for work. Those not in the labor force include, primarily, students, retirees and other non-working populations, such as individuals unable to work due to a disability or illness, or adults responsible for their family's childcare needs. Indiana's total labor force stands at 3,387,066.

Source: Indiana Department of Workforce Development

July 2024 Labor Force Estimates (not seasonally adjusted)

Area	Labor Force	Employed	Unemployed	Jul-24	Jun-24	Jul-23
U.S.	169,723,000	162,038,000	7,685,000	4.5%	4.3%	3.8%
IN	3,451,630	3,279,702	171,928	5.0%	4.4%	3.7%
EGR 5	1,124,096	1,074,479	49,617	4.4%	4.0%	3.3%
Indpls-Carmel MSA	1,149,884	1,099,099	50,785	4.4%	4.0%	3.3%
Boone Co.	39,847	38,327	1,520	3.8%	3.6%	2.8%
Hamilton Co.	201,890	194,195	7,695	3.8%	3.5%	2.9%
Hancock Co.	44,334	42,534	1,800	4.1%	3.7%	3.0%
Hendricks Co.	98,249	94,296	3,953	4.0%	3.7%	2.9%
Johnson Co.	90,080	86,436	3,644	4.0%	3.7%	2.9%
Madison Co.	62,654	59,457	3,197	5.1%	4.5%	3.6%
Marion Co.	523,641	498,502	25,139	4.8%	4.4%	3.6%
Morgan Co.	38,728	37,090	1,638	4.2%	3.9%	3.1%
Shelby Co.	24,673	23,642	1,031	4.2%	3.8%	2.9%
Anderson	24,597	23,240	1,357	5.5%	5.0%	4.2%
Carmel	58,612	56,336	2,276	3.9%	3.5%	2.9%
Fishers	57,372	55,269	2,103	3.7%	3.5%	2.9%
Greenfield	12,319	11,777	542	4.4%	4.1%	3.2%
Greenwood	33,564	32,148	1,416	4.2%	3.8%	3.1%
Indianapolis	479,807	456,639	23,168	4.8%	4.4%	3.6%
Lawrence	28,561	27,302	1,259	4.4%	3.9%	3.5%
Lebanon	9,314	8,953	361	3.9%	3.7%	2.7%
Noblesville	39,055	37,604	1,451	3.0%	3.5%	2.8%
Plainfield	18,785	17,976	809	4.3%	4.0%	3.2%
Shelbyville	9,992	9,528	464	4.6%	4.1%	3.2%
Westfield	27,152	26,096	1,056	3.9%	3.6%	3.0%
Zionsville	16,505	15,865	640	3.9%	3.6%	2.8%

Source: Indiana Department of Workforce Development, Research & Analysis, Local Area Unemployment Statistics | Unemployment Statistics Released:08/24

Notes: The data displayed are presented as estimates only. The most recent month's data are always preliminary and are revised when the next month's data are released.



Economic Growth Region (EGR) 5

Boone, Hamilton, Hancock, Hendricks, Johnson, Madison, Marion, Morgan, and Shelby counties

Unemployment Rates by State (seasonally adjusted): July 2024

U.S. - 4.3%

Illinois - 5.2%

Indiana - 4%

Kentucky - 4.7%

Michigan - 4.4%

Ohio - 4.5%

Source: U.S. Department of Labor, Bureau of Labor Statistics

Unemployment Rank by County (of 92 counties): July 2024

#27 - Madison (5.1%)

#40 - Marion (4.8%)

#70 - Morgan (4.2%)

#71 - Shelby (4.2%)

#74 - Hancock (4.1%)

#79 - Hendricks (4%)

#80 - Johnson (4%)

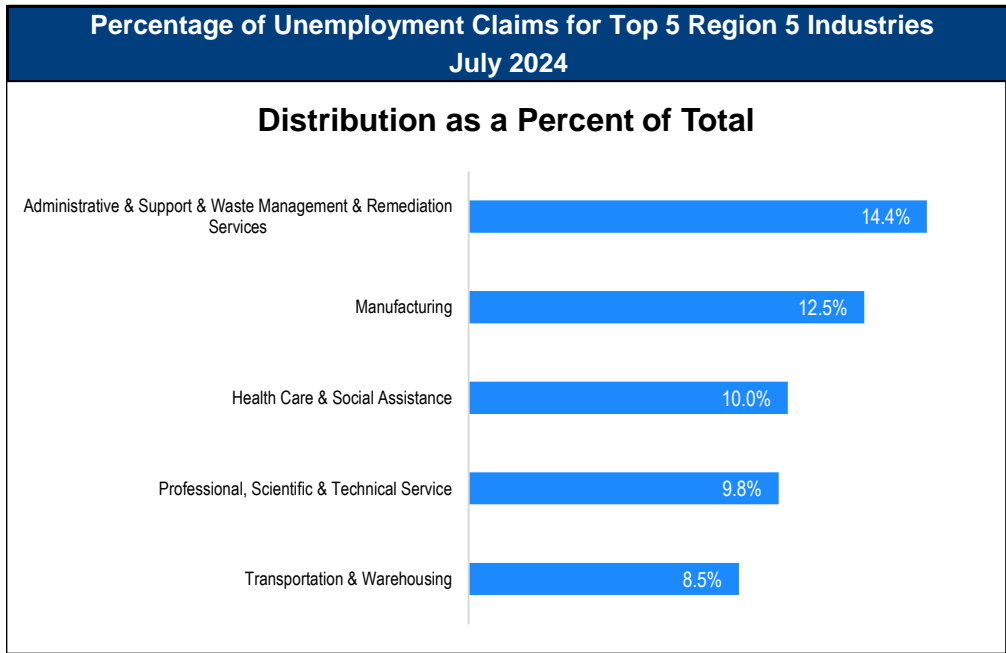
#84 - Boone (3.8%)

#86 - Hamilton (3.8%)

Source: Indiana Department of Workforce Development, Research and Development, Local Area Unemployment Statistics

Consumer Price Index (CPI-U Change), Unadjusted Percent Change to July 2024 from				
CPI Item	Jul-23	Jun-24	Jul-23	Jun-24
	U.S. City		Midwest Region*	
All Items	2.9%	0.1%	2.7%	0.5%
Food & Beverages	2.2%	0.2%	1.8%	0.4%
Housing	4.4%	0.3%	4.2%	0.6%
Apparel	0.2%	-1.6%	0.5%	-0.4%
Transportation	1.0%	-0.1%	0.4%	0.3%
Medical Care	3.2%	-0.2%	2.4%	0.2%
Recreation	1.4%	0.1%	1.5%	1.6%
Education & Communication	0.9%	0.2%	0.6%	0.3%
Other Goods & Services	4.2%	0.2%	6.7%	0.6%

*Midwest region = Midwest Urban Average. Midwest Region includes Illinois, Indiana, Iowa, Kansas, Michigan, Minnesota, Missouri, Nebraska, North Dakota, Ohio, South Dakota and Wisconsin | Source: U.S. Bureau of Labor Statistics



Source: Indiana Department of Workforce Development, Research and Analysis

WARN Notices

WARN Notices for Region 5 for July 2024				
Company	City	County	# of workers affected	Notice Date
Smart Style Salon	Anderson	Madison	1	7/15/2024
Triple Canopy	Anderson, Indianapolis	Madison, Marion	123	7/23/2024

There are no WARN Notices for July 2024 in Region 5

Source: Indiana Department of Workforce Development, WARN Notices | For information on WARN Act requirements, you may go to the U.S. Department of Labor Employment Training Administration Fact Sheet: <https://www.doleta.gov/programs/factsht/warn.htm>

Unemployment Claims: July 2024

Region 5

Initial Claims

07/06/24 - 2,735
07/13/24 - 1,330
07/20/24 - 881(D)
07/27/24 - 697(D)

Continued Claims

07/06/24 - 5,688
07/13/24 - 7,333
07/20/24 - 5,064
07/27/24 - 4,906

Total Claims

07/06/24 - 8,423
07/13/24 - 8,663
07/20/24 - 5,945
07/27/24 - 5,603

State of Indiana

Initial Claims

07/06/24 - 5,729
07/13/24 - 4,322
07/20/24 - 3,045
07/27/24 - 2,733

Continued Claims

07/06/24 - 22,019
07/13/24 - 23,222
07/20/24 - 20,275
07/27/24 - 19,820

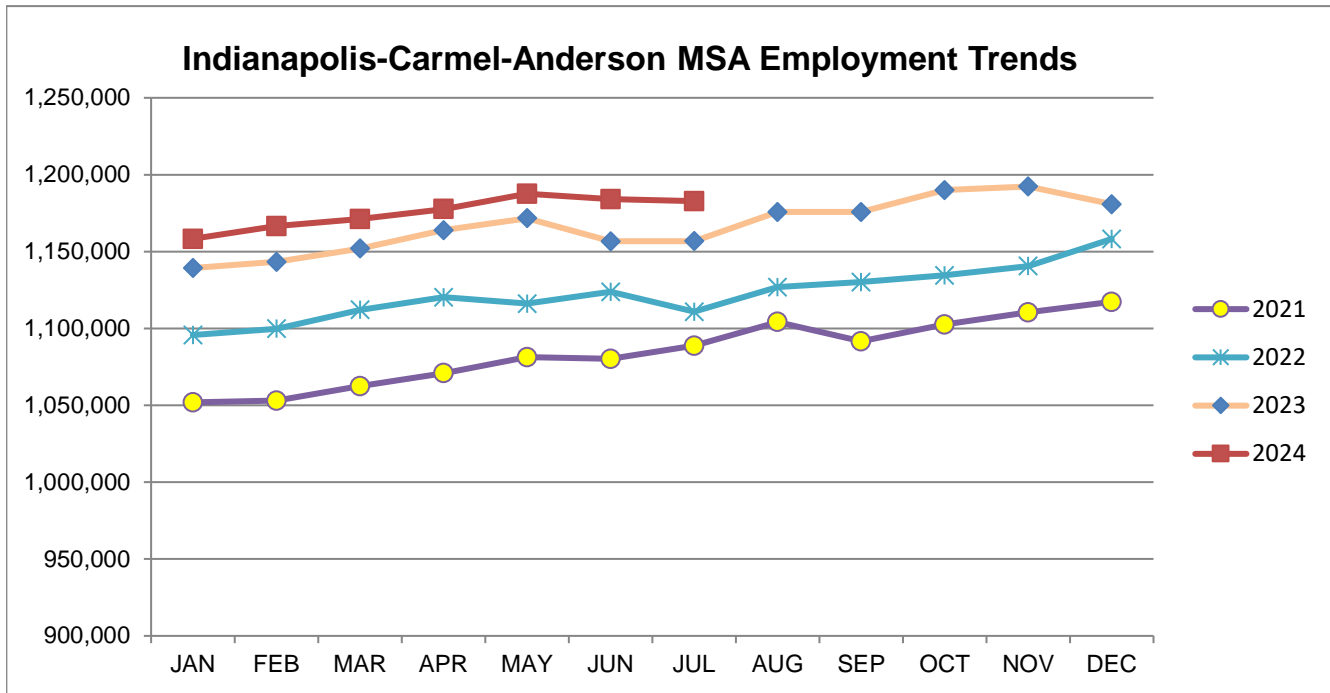
Total Claims

07/06/24 - 27,748
07/13/24 - 27,544
07/20/24 - 23,320
07/27/24 - 22,553

(D) indicates item is affected by non-disclosure issues relating to industry or ownership status | *Numbers subject to weekly revision | Source: Indiana Department of Workforce Development, Research and Development

Indianapolis-Carmel-Anderson MSA							
Wage and Salaried Employment	July 2024			# Change	% Change	# Change	% Change
Industry	Jul-24	Jun-24	Jul-23	Jun-24 to Jul-24	Jul-23 to Jul-24		
Total Nonfarm	1,182,800	1,184,100	1,156,800	-1,300	-0.1%	26,000	2.3%
Total Private	1,049,500	1,048,400	1,027,400	1,100	0.1%	22,100	2.2%
Goods Producing	168,900	168,000	163,500	900	0.5%	5,400	3.3%
Service-Providing	1,013,900	1,016,100	993,300	-2,200	-0.2%	20,600	2.1%
Private Service Providing	880,600	880,400	863,900	200	0.0%	16,700	1.9%
Mining and Logging	800	800	800	0	0.0%	0	0.0%
Mining, Logging and Construction	68,200	67,900	64,700	300	0.4%	3,500	5.4%
Construction	67,400	67,100	63,900	300	0.5%	3,500	5.5%
Specialty Trade Contractors	41,300	41,600	39,700	-300	-0.7%	1,600	4.0%
Manufacturing	100,700	100,100	98,800	600	0.6%	1,900	1.9%
Durable Goods	54,100	53,900	52,700	200	0.4%	1,400	2.7%
Transportation Equipment Manufacturing	15,100	15,100	14,800	0	0.0%	300	2.0%
Motor Vehicle Parts Manufacturing	10,100	10,100	9,900	0	0.0%	200	2.0%
Non-Durable Goods	46,600	46,200	46,100	400	0.9%	500	1.1%
Chemical Manufacturing	20,500	20,300	20,000	200	1.0%	500	2.5%
Trade, Transportation, and Utilities	246,000	244,500	245,600	1,500	0.6%	400	0.2%
Wholesale Trade	56,100	55,600	55,800	500	0.9%	300	0.5%
Merchant Wholesalers, Durable Goods	36,800	36,900	36,100	-100	-0.3%	700	1.9%
Retail Trade	99,600	99,800	99,300	-200	-0.2%	300	0.3%
General Merchandise Stores	24,500	24,500	23,500	0	0.0%	1,000	4.3%
Department Stores	4,400	4,300	4,100	100	2.3%	300	7.3%
Other General Merchandise Stores	20,100	20,200	19,400	-100	-0.5%	700	3.6%
Transportation, Warehousing, and Utilities	90,300	89,100	90,500	1,200	1.4%	-200	-0.2%
Transportation and Warehousing	87,000	85,900	87,100	1,100	1.3%	-100	-0.1%
Information	11,800	11,900	12,500	-100	-0.8%	-700	-5.6%
Telecommunications	2,800	2,800	3,000	0	0.0%	-200	-6.7%
Financial Activities	76,900	76,800	75,400	100	0.1%	1,500	2.0%
Finance and Insurance	57,900	58,200	57,600	-300	-0.5%	300	0.5%
Insurance Carriers and Related Activities	36,500	36,800	36,100	-300	-0.8%	400	1.1%
Insurance Carriers	20,300	20,400	20,100	-100	-0.5%	200	1.0%
Professional and Business Services	190,900	189,800	187,100	1,100	0.6%	3,800	2.0%
Professional, Scientific, and Technical Services	84,200	83,300	82,400	900	1.1%	1,800	2.2%
Management of Companies and Enterprises	15,300	15,300	14,700	0	0.0%	600	4.1%
Administrative and Support and waste management and Remediation Services	91,400	91,200	90,000	200	0.2%	1,400	1.6%
Administrative and Support Services	87,600	87,400	85,400	200	0.2%	2,200	2.6%
Employment Services	44,000	43,800	42,300	200	0.5%	1,700	4.0%
Education and Health Services	189,000	190,400	182,800	-1,400	-0.7%	6,200	3.4%
Educational Services	21,600	21,800	20,100	-200	-0.9%	1,500	7.5%
Health Care and Social Assistance	167,400	168,600	162,700	-1,200	-0.7%	4,700	2.9%
Ambulatory Health Care Services	74,100	74,100	70,700	0	0.0%	3,400	4.8%
Hospitals	46,700	46,600	45,600	100	0.2%	1,100	2.4%
Leisure and Hospitality	119,700	119,700	114,300	0	0.0%	5,400	4.7%
Accommodation and Food Services	95,500	95,700	94,300	-200	-0.2%	1,200	1.3%
Food Services and Drinking Places	86,500	86,700	86,300	-200	-0.2%	200	0.2%
Restaurants and Other Eating Places	78,400	78,600	78,400	-200	-0.3%	0	0.0%
Full-service restaurants	37,400	37,600	37,500	-200	-0.5%	-100	-0.3%
Limited-Service Restaurants and Other Eating Places	41,000	41,000	40,900	0	0.0%	100	0.2%
Other Services	46,300	47,300	46,200	-1,000	-2.1%	100	0.2%
Total Government	133,300	135,700	129,400	-2,400	-1.8%	3,900	3.0%
Federal Government	19,100	19,000	18,700	100	0.5%	400	2.1%
State Government	34,200	34,800	34,000	-600	-1.7%	200	0.6%
Local Government	80,000	81,900	76,700	-1,900	-2.3%	3,300	4.3%
Local Government Educational Services	32,800	35,200	31,400	-2,400	-6.8%	1,400	4.5%

Source: Indiana Dept of Workforce Development, Research and Analysis, Current Employment Statistics



Source: Indiana Department of Workforce Development, Research & Analysis, Current Employment Statistics | *Note:* Historical data for the most recent 4 years (both seasonally adjusted and not seasonally adjusted) are revised near the beginning of each calendar year, prior to the release of January estimates for statewide data.

Frequently Listed Jobs	
Top 20 job listings by number of openings in Region 5 in the past month	
Rank	Occupations
1	Nursing Assistants
2	Registered Nurses
3	Retail Salespersons
4	Stockers and Order Fillers
5	Licensed Practical and Licensed Vocational Nurses
6	Animal Caretakers
7	First-Line Supervisors of Production and Operating Workers
8	Maintenance and Repair Workers, General
9	Landscaping and Groundskeeping Workers
10	Production Workers, All Other
11	Customer Service Representatives
12	First-Line Supervisors of Retail Sales Workers
13	Software Developers
14	Managers, All Other
15	Industrial Truck and Tractor Operators
16	News Analysts, Reporters, and Journalists
17	Sales Representatives of Services, Except Advertising, Insurance, Financial Services, and Travel
18	Computer and Information Systems Managers
19	Cashiers
20	Heavy and Tractor-Trailer Truck Drivers

Source: Indiana Workforce Development, Indiana Career Connect. * Due to an upgrade in the reporting system, there is a notable change in Job Postings recorded. The tool used to measure Job Postings was upgraded to prevent malicious or false postings. While customers adjust to the enhancements a drop in the record is to be expected.

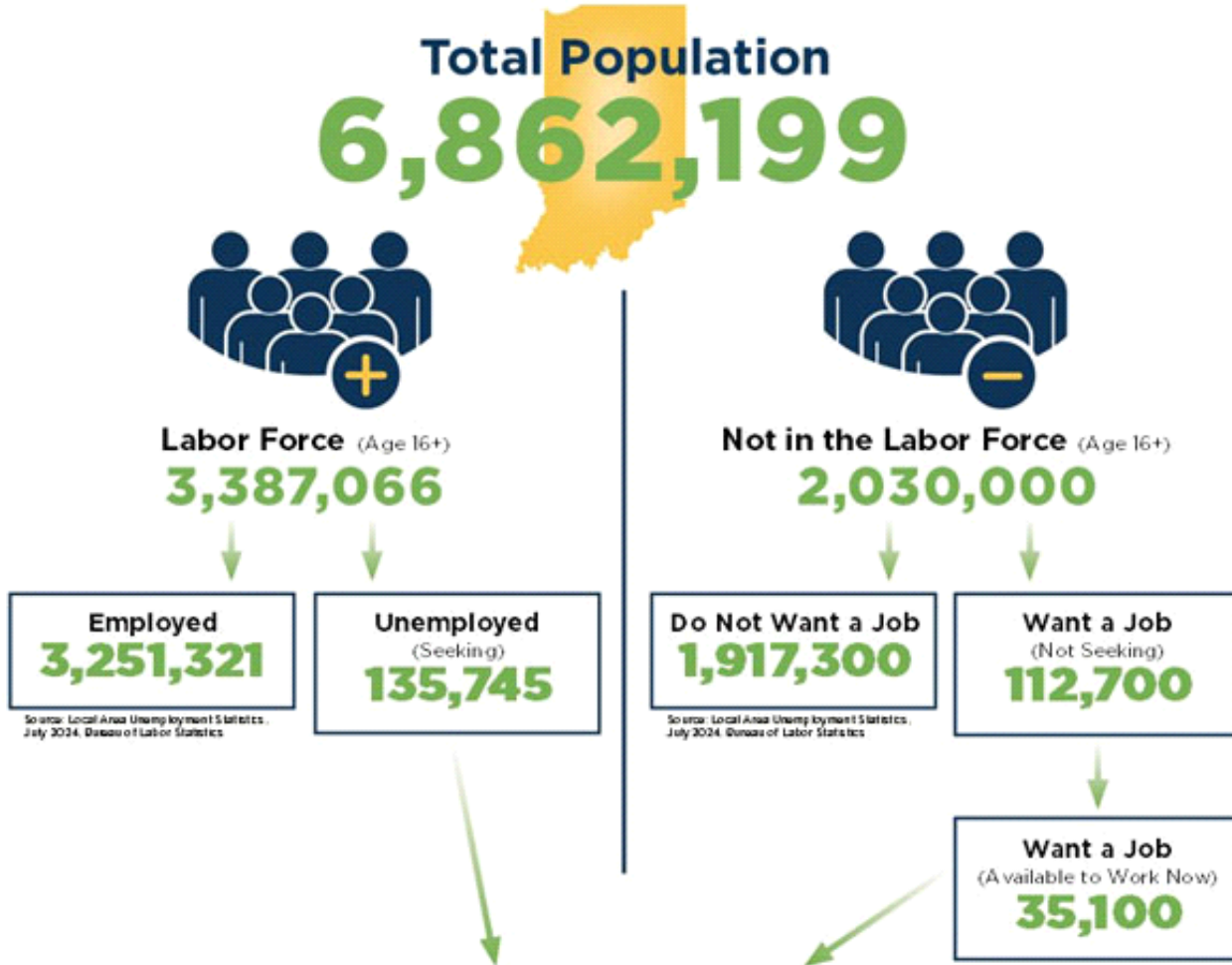
Applicant Pool	
Top 20 occupations desired by applicants on their resumes in the past 12 months	
Occupations	# of applicants
Customer Service Representatives	2,082
Production Workers, All Other	1,325
Laborers and Freight, Stock, and Material Movers, Hand	1,183
Assemblers and Fabricators, All Other	986
Cashiers	936
Helpers--Production Workers	790
Heavy and Tractor-Trailer Truck Drivers	742
Office Clerks, General	646
Managers, All Other	622
Industrial Truck and Tractor Operators	538
Packers and Packagers, Hand	538
Office and Administrative Support Workers, All Other	491
Executive Secretaries and Executive Administrative Assistants	445
Retail Salespersons	431
Receptionists and Information Clerks	403
Data Entry Keyers	383
General and Operations Managers	383
Shipping, Receiving, and Traffic Clerks	358
Sales Managers	324
Medical Assistants	313

Source: Indiana Workforce Development, Indiana Career Connect

BREAKDOWN

July Indiana Labor Force

Released August 16, 2024



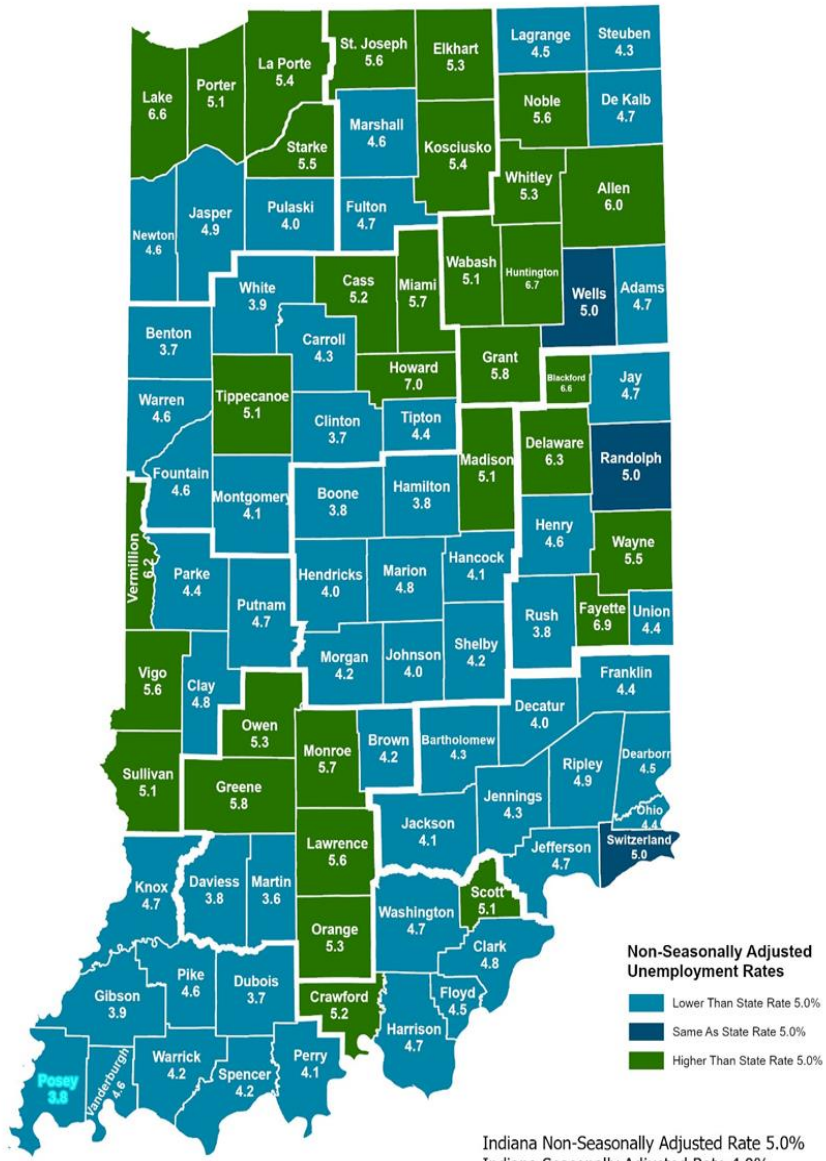
Potential Workers
(Unemployed and Seeking a Job + Not in the Labor Force but Want a Job/Available to Work Now)

170,845

More about the US Bureau of Labor Statistics data sources used within:
Local Area Unemployment Statistics (LAUS): Captures Indiana's labor force, which includes those currently employed and those who are unemployed and actively seeking work.
Current Population Survey (CPS): Captures individuals not participating in Indiana's Labor Force. This set includes non-participants that do not want a job (i.e. retirees and students) and those that want a job, but also not actively seeking work.
U.S. Census Bureau, Indiana Population 2023.

Resource: Notes on Using Current Population Survey (CPS) Seasonal Data and Differences Between CPS and LAUS Estimates

County Unemployment Rates July 2024



Questions?
Please contact the DWD Research and Analysis Regional Labor Analyst listed below:

Alex Corn
Senior Regional Labor Analyst
Research and Analysis
[Indiana Department of Workforce Development](http://www.in.gov/dwd)
dcorn@dwd.in.gov

Indiana Non-Seasonally Adjusted Rate 5.0%
Indiana Seasonally Adjusted Rate 4.0%
Source: DWD, Local Area Unemployment Statistics