



HOOSIERS BY THE NUMBERS

Your premier source for labor market information for Indiana.



LABOR MARKET REVIEW



August 2023 Labor Market Review

Reported by: Mike Petro

Regional Workforce Analyst

[Email Mike](mailto:MPetro@dwd.in.gov)

GPetro@dwd.in.gov

Tel: 317-537-1316



LABOR MARKET REVIEW

Economic Growth Region 5

Statistical Data Report for August 2023, Released October 2023

State Employment and Unemployment

STATE EMPLOYMENT AND UNEMPLOYMENT -- AUGUST 2023

Unemployment rates were higher in August in 10 states, lower in 2 states, and stable in 38 states and the District of Columbia, the U.S. Bureau of Labor Statistics reported. Twenty-five states had jobless rate decreases from a year earlier, 9 states and the District had increases, and 16 states had little change. The national unemployment rate, 3.8 percent, rose by 0.3 percentage point over the month but was little changed from August 2022. Nonfarm payroll employment increased in 5 states, decreased in 3 states, and was essentially unchanged in 42 states and the District of Columbia in August 2023. Over the year, nonfarm payroll employment increased in 32 states and was essentially unchanged in 18 states and the District.

Source: Bureau of Labor Statistics

August 2023 Labor Force Estimates (not seasonally adjusted)

Area	Labor Force	Employed	Unemployed	Aug-23	Jul-23	Aug-22
U.S.	168,049,000	161,427,000	6,623,000	3.9%	3.8%	3.8%
IN	3,431,073	3,302,685	128,388	3.7%	4.0%	3.2%
EGR 5	1,113,487	1,075,664	37,823	3.4%	3.6%	2.9%
Indpls-Carmel MSA	1,138,900	1,100,194	38,706	3.4%	3.6%	2.9%
Boone Co.	39,318	38,184	1,134	2.9%	3.1%	2.1%
Hamilton Co.	200,151	194,410	5,741	2.9%	3.1%	2.3%
Hancock Co.	43,819	42,446	1,373	3.1%	3.3%	3.3%
Hendricks Co.	97,381	94,409	2,972	3.1%	3.2%	2.5%
Johnson Co.	89,039	86,339	2,700	3.0%	3.2%	2.5%
Madison Co.	61,714	59,312	2,402	3.9%	4.0%	3.4%
Marion Co.	519,428	499,946	19,482	3.8%	3.9%	3.4%
Morgan Co.	38,322	37,058	1,264	3.3%	3.4%	2.8%
Shelby Co.	24,315	23,560	755	3.1%	3.2%	2.6%
Anderson	24,248	23,183	1,065	4.4%	4.6%	4.1%
Carmel	58,071	56,398	1,673	2.9%	3.1%	2.1%
Fishers	56,966	55,330	1,636	2.9%	3.1%	2.3%
Greenfield	12,188	11,752	436	3.6%	3.5%	2.9%
Greenwood	33,189	32,112	1,077	3.2%	3.4%	2.7%
Indianapolis	475,865	457,962	17,903	3.8%	3.9%	3.4%
Lawrence	28,382	27,382	1,000	3.5%	3.8%	3.2%
Lebanon	9,205	8,920	285	3.1%	2.9%	2.2%
Noblesville	38,751	37,646	1,105	2.9%	3.0%	2.4%
Plainfield	18,602	17,997	605	3.3%	3.4%	2.8%
Shelbyville	9,833	9,495	338	3.4%	3.6%	2.7%
Westfield	26,907	26,125	782	2.9%	3.2%	2.2%
Zionsville	16,254	15,806	448	2.8%	3.1%	2.0%

Source: Indiana Department of Workforce Development, Research & Analysis, Local Area Unemployment Statistics | Unemployment Statistics Released:09/23

Notes: The data displayed are presented as estimates only. The most recent month's data are always preliminary and are revised when the next month's data are released.



Economic Growth Region (EGR) 5

Boone, Hamilton, Hancock, Hendricks, Johnson, Madison, Marion, Morgan, and Shelby counties

Unemployment Rates by State (seasonally adjusted): August 2023

U.S. - 3.8%

Illinois - 4.1%

Indiana - 3.4%

Kentucky - 4%

Michigan - 3.7%

Ohio - 3.4%

Source: U.S. Department of Labor, Bureau of Labor Statistics

Unemployment Rank by County (of 92 counties): August 2023

#22 - Madison (3.9%)

#26 - Marion (3.8%)

#54 - Morgan (3.3%)

#67 - Hancock (3.1%)

#69 - Hendricks (3.1%)

#73 - Shelby (3.1%)

#77 - Johnson (3%)

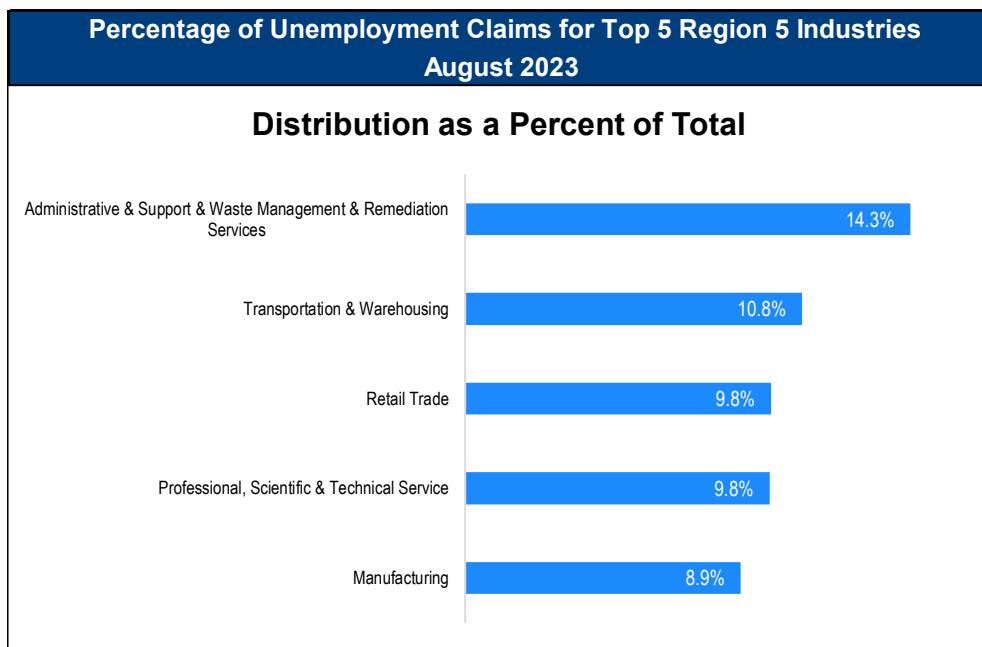
#81 - Boone (2.9%)

#83 - Hamilton (2.9%)

Source: Indiana Department of Workforce Development, Research and Development, Local Area Unemployment Statistics

Consumer Price Index (CPI-U Change), Unadjusted Percent Change to August 2023 from				
CPI Item	Aug-22	Jul-23	Aug-22	Jul-23
	U.S. City		Midwest Region*	
All Items	3.7%	0.4%	3.4%	0.2%
Food & Beverages	4.2%	0.2%	4.0%	-0.1%
Housing	5.7%	0.3%	4.6%	-0.4%
Apparel	3.1%	1.6%	3.9%	2.0%
Transportation	1.4%	1.3%	2.5%	1.3%
Medical Care	-1.0%	0.3%	0.0%	1.0%
Recreation	3.5%	-0.2%	4.3%	-0.5%
Education & Communication	1.0%	0.2%	1.2%	0.2%
Other Goods & Services	5.8%	0.4%	6.1%	0.0%

*Midwest region = Midwest Urban Average. Midwest Region includes Illinois, Indiana, Iowa, Kansas, Michigan, Minnesota, Missouri, Nebraska, North Dakota, Ohio, South Dakota and Wisconsin | Source: U.S. Bureau of Labor Statistics



Source: Indiana Department of Workforce Development, Research and Analysis

WARN Notices

WARN Notices for Region 5 for August 2023				
Company	City	County	# of workers affected	Notice Date
Aurorium	Indianapolis	Marion	159	8/2/2023
Alan Ritchey	Plainfield	Hendricks	242	8/3/2023
BWI Group	Greenfield	Hancock	9	8/3/2023

For the month of August, Region 5 had 3 WARN notices, affecting up to 410 people. Please visit <https://www.in.gov/dwd/2567.htm> for details.

Source: Indiana Department of Workforce Development, WARN Notices | For information on WARN Act requirements, you may go to the U.S. Department of Labor Employment Training Administration Fact Sheet: <https://www.doleta.gov/programs/factsht/warn.htm>

Unemployment Claims: August 2023

Region 5

Initial Claims

08/05/23 - 960
08/12/23 - 799(D)
08/19/23 - 690(D)
08/26/23 - 696(D)

Continued Claims

08/05/23 - 764
08/12/23 - 860
08/19/23 - 4,494
08/26/23 - 4,472

Total Claims

08/05/23 - 1,724
08/12/23 - 1,659
08/19/23 - 5,184
08/26/23 - 5,168

State of Indiana

Initial Claims

08/05/23 - 3,478
08/12/23 - 3,216
08/19/23 - 2,731
08/26/23 - 2,603

Continued Claims

08/05/23 - 20,709
08/12/23 - 20,384
08/19/23 - 20,398
08/26/23 - 19,395

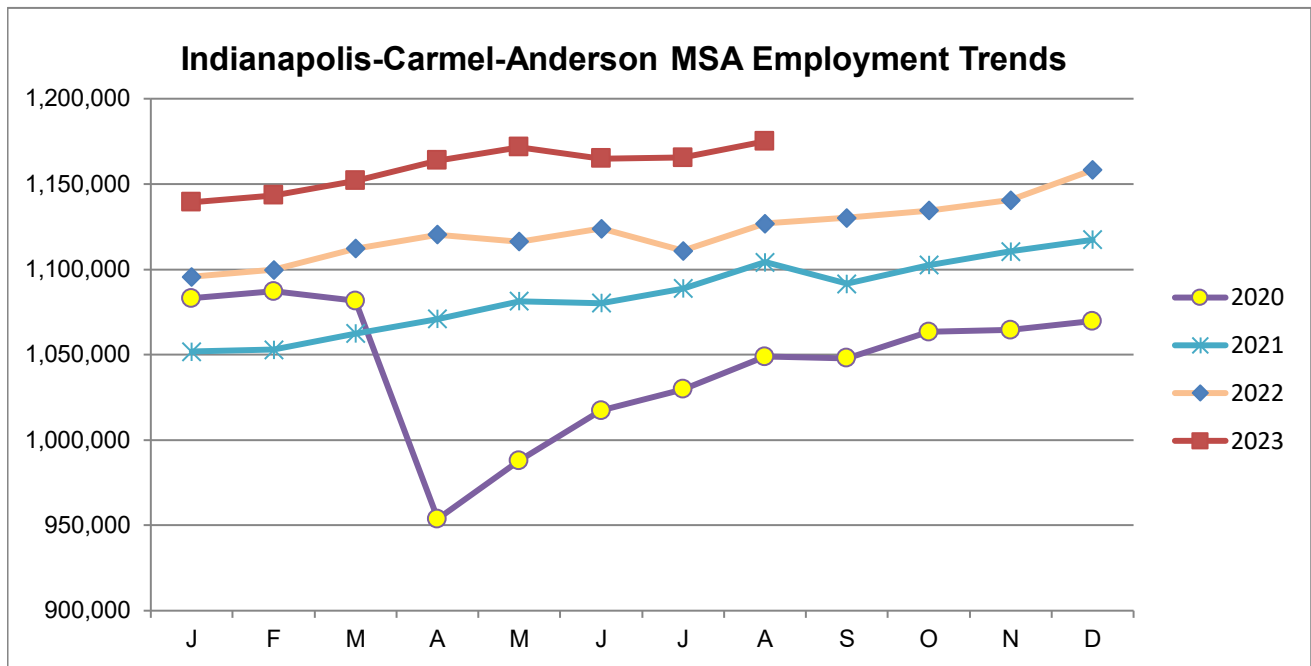
Total Claims

08/05/23 - 24,187
08/12/23 - 23,600
08/19/23 - 23,129
08/26/23 - 21,998

(D) indicates item is affected by non-disclosure issues relating to industry or ownership status | *Numbers subject to weekly revision Source: Indiana Department of workforce Development, Research and Development

Indianapolis-Carmel-Anderson MSA							
Wage and Salaried Employment	August 2023			# Change	% Change	# Change	% Change
Industry	Aug-23	Jul-23	Aug-22	Jul-23 to Aug-23		Aug-22 to Aug-23	
Total Nonfarm	1,175,000	1,165,400	1,148,200	9,600	0.8%	26,800	2.3%
Total Private	1,034,000	1,036,400	1,011,500	-2,400	-0.2%	22,500	2.2%
Goods Producing	164,400	163,100	157,300	1,300	0.8%	7,100	4.5%
Service-Providing	1,010,600	1,002,300	990,900	8,300	0.8%	19,700	2.0%
Private Service Providing	869,600	873,300	854,200	-3,700	-0.4%	15,400	1.8%
Mining and Logging	800	800	800	0	0.0%	0	0.0%
Mining, Logging and Construction	65,700	64,400	61,900	1,300	2.0%	3,800	6.1%
Construction	64,900	63,600	61,100	1,300	2.0%	3,800	6.2%
Specialty Trade Contractors	41,900	41,300	38,600	600	1.5%	3,300	8.6%
Manufacturing	98,700	98,700	95,400	0	0.0%	3,300	3.5%
Durable Goods	52,200	52,300	51,300	-100	-0.2%	900	1.8%
Transportation Equipment Manufacturing	14,500	14,500	14,100	0	0.0%	400	2.8%
Motor Vehicle Parts Manufacturing	9,600	9,600	9,400	0	0.0%	200	2.1%
Non-Durable Goods	46,500	46,400	44,100	100	0.2%	2,400	5.4%
Chemical Manufacturing	19,700	19,800	18,800	-100	-0.5%	900	4.8%
Trade, Transportation, and Utilities	243,900	243,800	244,600	100	0.0%	-700	-0.3%
Wholesale Trade	55,500	56,000	53,600	-500	-0.9%	1,900	3.5%
Merchant Wholesalers, Durable Goods	35,400	35,800	34,100	-400	-1.1%	1,300	3.8%
Retail Trade	98,800	98,700	100,300	100	0.1%	-1,500	-1.5%
General Merchandise Stores	23,800	23,800	23,400	0	0.0%	400	1.7%
Department Stores	4,000	4,000	4,100	0	0.0%	-100	-2.4%
Other General Merchandise Stores	19,800	19,800	19,300	0	0.0%	500	2.6%
Transportation, Warehousing, and Utilities	89,600	89,100	90,700	500	0.6%	-1,100	-1.2%
Transportation and Warehousing	86,600	86,100	87,400	500	0.6%	-800	-0.9%
Information	12,200	12,300	12,700	-100	-0.8%	-500	-3.9%
Telecommunications	3,000	3,000	3,100	0	0.0%	-100	-3.2%
Financial Activities	78,900	79,600	75,700	-700	-0.9%	3,200	4.2%
Finance and Insurance	61,900	62,500	58,100	-600	-1.0%	3,800	6.5%
Insurance Carriers and Related Activities	38,000	38,200	35,900	-200	-0.5%	2,100	5.9%
Insurance Carriers	20,700	20,800	20,100	-100	-0.5%	600	3.0%
Professional and Business Services	198,400	197,600	194,000	800	0.4%	4,400	2.3%
Professional, Scientific, and Technical Services	84,600	83,800	81,400	800	1.0%	3,200	3.9%
Management of Companies and Enterprises	14,900	14,700	14,500	200	1.4%	400	2.8%
Administrative and Support and Waste Management and Remediation Services	98,900	99,100	98,100	-200	-0.2%	800	0.8%
Administrative and Support Services	94,200	94,500	93,500	-300	-0.3%	700	0.8%
Employment Services	51,500	51,100	52,100	400	0.8%	-600	-1.2%
Education and Health Services	175,100	175,700	171,500	-600	-0.3%	3,600	2.1%
Educational Services	20,500	19,900	19,400	600	3.0%	1,100	5.7%
Health Care and Social Assistance	154,600	155,800	152,100	-1,200	-0.8%	2,500	1.6%
Ambulatory Health Care Services	66,300	66,500	64,800	-200	-0.3%	1,500	2.3%
Hospitals	45,800	46,300	45,300	-500	-1.1%	500	1.1%
Leisure and Hospitality	114,400	117,300	110,800	-2,900	-2.5%	3,600	3.3%
Accommodation and Food Services	99,700	100,700	92,500	-1,000	-1.0%	7,200	7.8%
Food Services and Drinking Places	90,700	91,500	84,800	-800	-0.9%	5,900	7.0%
Restaurants and Other Eating Places	81,000	81,200	76,700	-200	-0.3%	4,300	5.6%
Full-service restaurants	40,000	40,100	36,900	-100	-0.3%	3,100	8.4%
Limited-Service Restaurants and Other Eating Places	41,000	41,100	39,800	-100	-0.2%	1,200	3.0%
Other Services	46,700	47,000	44,900	-300	-0.6%	1,800	4.0%
Total Government	141,000	129,000	136,700	12,000	9.3%	4,300	3.2%
Federal Government	18,500	18,400	17,800	100	0.5%	700	3.9%
State Government	34,700	33,500	34,000	1,200	3.6%	700	2.1%
Local Government	87,800	77,100	84,900	10,700	13.9%	2,900	3.4%
Local Government Educational Services	41,800	31,700	41,500	10,100	31.9%	300	0.7%

Source: Indiana Dept of Workforce Development, Research and Analysis, Current Employment Statistics



Source: Indiana Department of Workforce Development, Research & Analysis, Current Employment Statistics | *Note:* Historical data for the most recent 4 years (both seasonally adjusted and not seasonally adjusted) are revised near the beginning of each calendar year, prior to the release of January estimates for statewide data.

Frequently Listed Jobs	
Top 20 job listings by number of openings in Region 5 in the past month	
Rank	Occupations
1	Registered Nurses
2	Stockers and Order Fillers
3	Nursing Assistants
4	Retail Salespersons
5	Licensed Practical and Licensed Vocational Nurses
6	Maintenance and Repair Workers, General
7	First-Line Supervisors of Production and Operating Workers
8	News Analysts, Reporters, and Journalists
9	Automotive Service Technicians and Mechanics
10	Customer Service Representatives
11	Sales Representatives of Services, Except Advertising, Insurance, Financial Services, and Travel
12	First-Line Supervisors of Material-Moving Machine and Vehicle Operators
13	Recreation Workers
14	Food Preparation Workers
15	Physical Therapists
16	Social and Human Service Assistants
17	Managers, All Other
18	Demonstrators and Product Promoters
19	Janitors and Cleaners, Except Maids and Housekeeping Cleaners
20	Industrial Truck and Tractor Operators

Source: Indiana Workforce Development, Indiana Career Connect

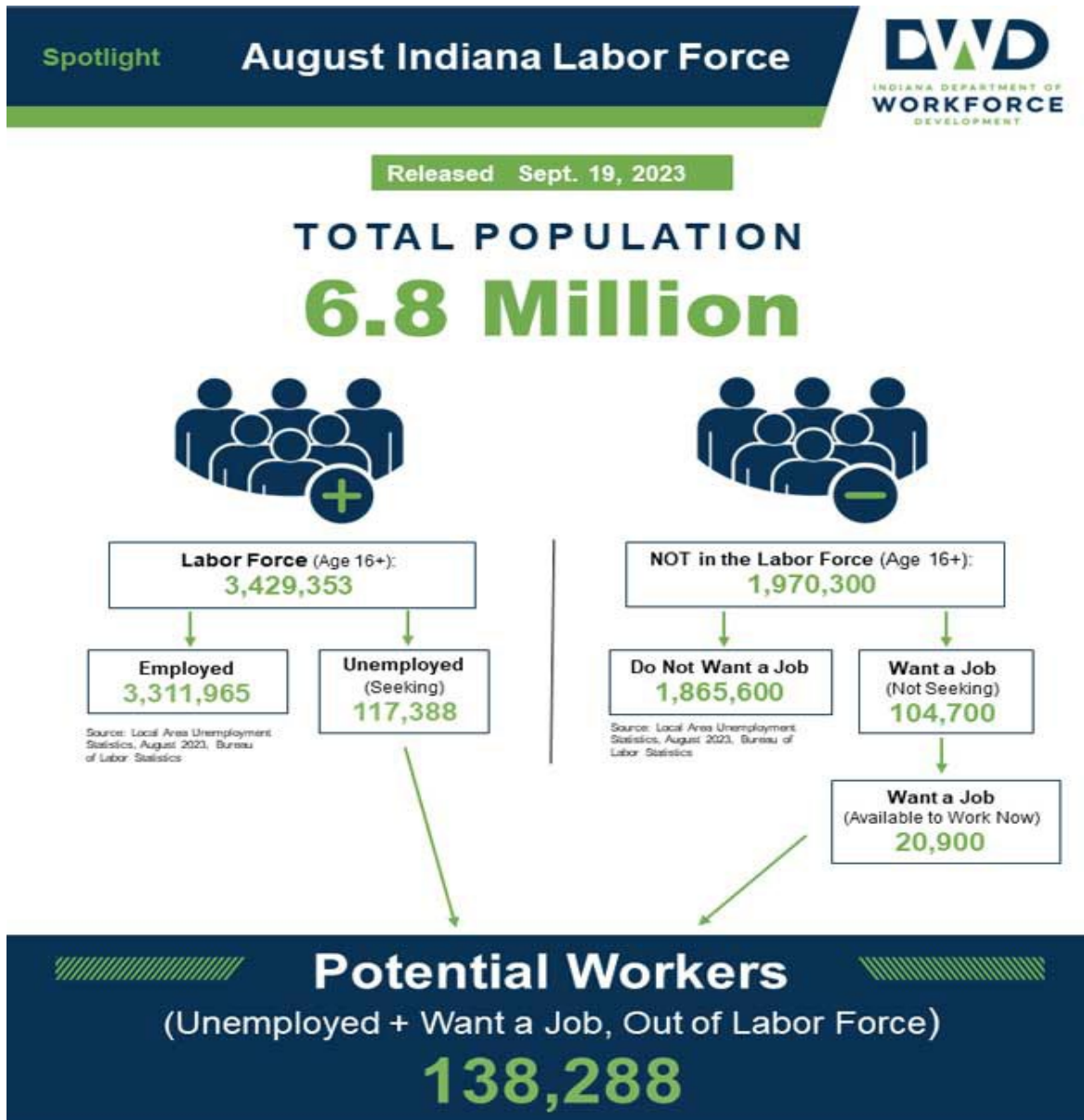
Applicant Pool	
Top 20 occupations desired by applicants on their resumes in the past 12 months	
Occupations	# of applicants
Customer Service Representatives	3,770
Production Workers, All Other	2,436
Assemblers and Fabricators, All Other	2,009
Cashiers	1,974
Laborers and Freight, Stock, and Material Movers, Hand	1,949
Helpers--Production Workers	1,564
Office Clerks, General	1,203
Managers, All Other	1,023
Office and Administrative Support Workers, All Other	1,013
Packers and Packagers, Hand	984
Executive Secretaries and Executive Administrative Assistants	918
Industrial Truck and Tractor Operators	856
Retail Salespersons	836
Heavy and Tractor-Trailer Truck Drivers	802
Receptionists and Information Clerks	791
Data Entry Keyers	680
Shipping, Receiving, and Traffic Clerks	606
Janitors and Cleaners, Except Maids and Housekeeping Cleaners	574
Waiters and Waitresses	569
Material Moving Workers, All Other	550

Source: Indiana Workforce Development, Indiana Career Connect

Real Earnings Summary

REAL EARNINGS – AUGUST 2023

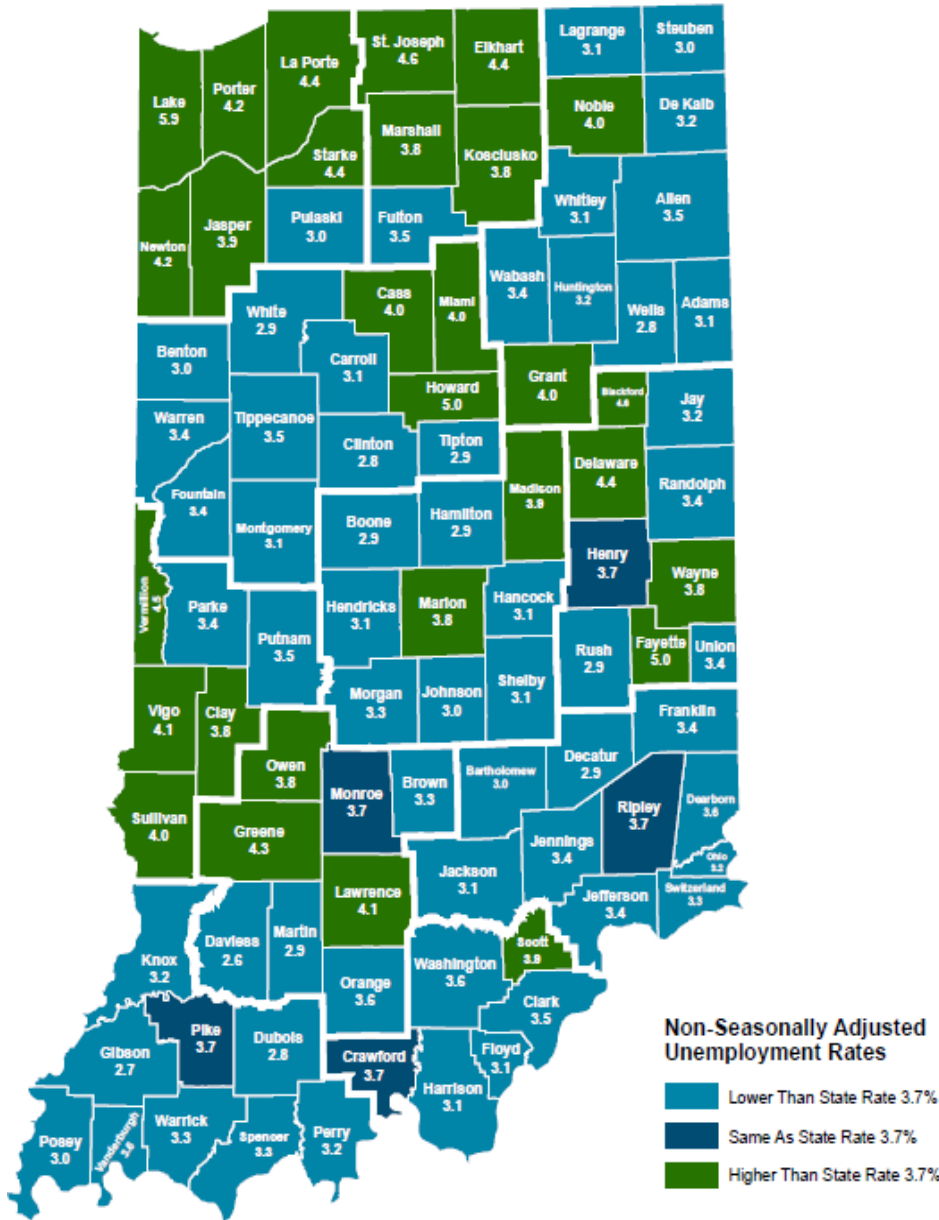
Real average hourly earnings for all employees decreased 0.5 percent from July to August, seasonally adjusted, the U.S. Bureau of Labor Statistics reported. This result stems from an increase of 0.2 percent in average hourly earnings combined with an increase of 0.6 percent in the Consumer Price Index for All Urban Consumers (CPI-U). Real average weekly earnings decreased 0.1 percent over the month due to the change in real average hourly earnings combined with a 0.3-percent increase in the average workweek. Real average hourly earnings increased 0.5 percent, seasonally adjusted, from August 2022 to August 2023. The change in real average hourly earnings combined with a decrease of 0.3 percent in the average workweek resulted in a 0.3-percent increase in real average weekly earnings over this period. Source: U.S. Bureau of Labor Statistics



More about the US Bureau of Labor Statistics data sources used within:
 Local Area Unemployment Statistics (LAUS): Captures Indiana's labor force, which includes those currently employed and those who are unemployed and actively seeking work.
 Current Population Survey (CPS): Captures individuals not participating in Indiana's Labor Force. This set includes non-participants that do not want a job (i.e. retirees and students) and those that want a job, but are not actively seeking work.
 U.S. Census Bureau, Indiana Population 2021.

Resource: Notes on Using Current Population Survey (CPS) Subnational Data and Differences Between CPS and LAUS Estimates

County Unemployment Rates August 2023



Non-Seasonally Adjusted Unemployment Rates

- Lower Than State Rate 3.7%
- Same As State Rate 3.7%
- Higher Than State Rate 3.7%

Indiana Non-Seasonally Adjusted Rate 3.7%
 Indiana Seasonally Adjusted Rate 3.4%
 Source: DWD, Local Area Unemployment Statistics

Questions?

Please contact the DWD
 Research and Analysis
 Regional Labor Analyst
 listed below:

Mike Petro
 Regional Labor Analyst
 Research and Analysis

[Indiana Department of Workforce Development](https://www.in.gov/dwd/)

317-537-1316

GPetro@dwd.in.gov