



## April 2021 Labor Market Review

Reported by: Joe Smagacz

Regional Workforce Analyst  
[Email Joe](mailto:jsmagacz@dwd.in.gov)  
jsmagacz@dwd.in.gov

Tel: 317-232-8539

## Economic Growth Region 5

Statistical Data Report for April 2021, Released June 2021

### State Employment and Unemployment

Unemployment rates were lower in April in 12 states and the District of Columbia and stable in 38 states, the U.S. Bureau of Labor Statistics reported. Forty-eight states and the District had jobless rate decreases from a year earlier and two states had little change. The national unemployment rate, 6.1 percent, was little changed over the month, but was 8.7 percentage points lower than in April 2020. Nonfarm payroll employment increased in 9 states and the District of Columbia, decreased in 2 states, and was essentially unchanged in 39 states in April 2021. Over the year, nonfarm payroll employment increased in all states and the District.



### Economic Growth Region (EGR) 5

Boone, Hamilton, Hancock, Hendricks, Johnson, Madison, Marion, Morgan, and Shelby counties

April 2021 Labor Force Estimates (not seasonally adjusted)						
Area	Labor Force	Employed	Unemployed	Apr-21	Mar-21	Apr-20
U.S.	160,379,000	151,160,000	9,220,000	5.7%	6.2%	14.4%
IN	3,327,059	3,187,375	139,684	4.2%	4.6%	16.5%
EGR 5	1,043,487	1,000,001	43,486	4.2%	4.5%	12.8%
Indpls-Carmel MSA	1,067,283	1,022,841	44,442	4.2%	4.5%	12.8%
Boone Co.	35,698	34,802	896	2.5%	3.1%	8.6%
Hamilton Co.	183,804	179,030	4,774	2.6%	3.0%	9.7%
Hancock Co.	40,225	38,999	1,226	3.0%	3.5%	13.2%
Hendricks Co.	89,887	87,198	2,689	3.0%	3.4%	10.1%
Johnson Co.	82,235	79,692	2,543	3.1%	3.5%	12.8%
Madison Co.	58,348	55,460	2,888	4.9%	5.4%	17.6%
Marion Co.	494,874	468,411	26,463	5.3%	5.6%	13.9%
Morgan Co.	35,660	34,466	1,194	3.3%	3.9%	11.2%
Shelby Co.	22,756	21,943	813	3.6%	4.0%	18.4%
Anderson	23,237	21,749	1,488	6.4%	6.9%	20.0%
Carmel	53,867	52,594	1,273	2.4%	3.0%	8.3%
Fishers	52,363	50,977	1,386	2.6%	2.9%	9.0%
Greenfield	11,182	10,818	364	3.3%	4.0%	16.4%
Greenwood	30,772	29,687	1,085	3.5%	3.8%	13.8%
Indianapolis	453,509	429,044	24,465	5.4%	5.7%	13.9%
Lawrence	26,820	25,654	1,166	4.3%	4.5%	11.5%
Lebanon	8,569	8,282	287	3.3%	4.0%	10.6%
Noblesville	35,695	34,681	1,014	2.8%	3.2%	12.0%
Plainfield	16,958	16,449	509	3.0%	3.5%	10.6%
Shelbyville	9,212	8,825	387	4.2%	4.8%	23.3%
Westfield	23,762	23,176	586	2.5%	2.9%	9.4%
Zionsville	14,559	14,233	326	2.2%	2.7%	7.0%

### Unemployment Rates by State (seasonally adjusted): April 2021

**U.S. - 6.1%**

Illinois - 7.1%

**Indiana - 3.9%**

Kentucky - 4.7%

Michigan - 4.9%

Ohio - 4.7%

Source: U.S. Department of Labor, Bureau of Labor Statistics

### Unemployment Rank by County (of 92 counties): April 2021

#4 - Marion (5.3%)

#7 - Madison (4.9%)

#42 - Shelby (3.6%)

#53 - Morgan (3.3%)

#62 - Johnson (3.1%)

#69 - Hancock (3%)

#71 - Hendricks (3%)

#87 - Hamilton (2.6%)

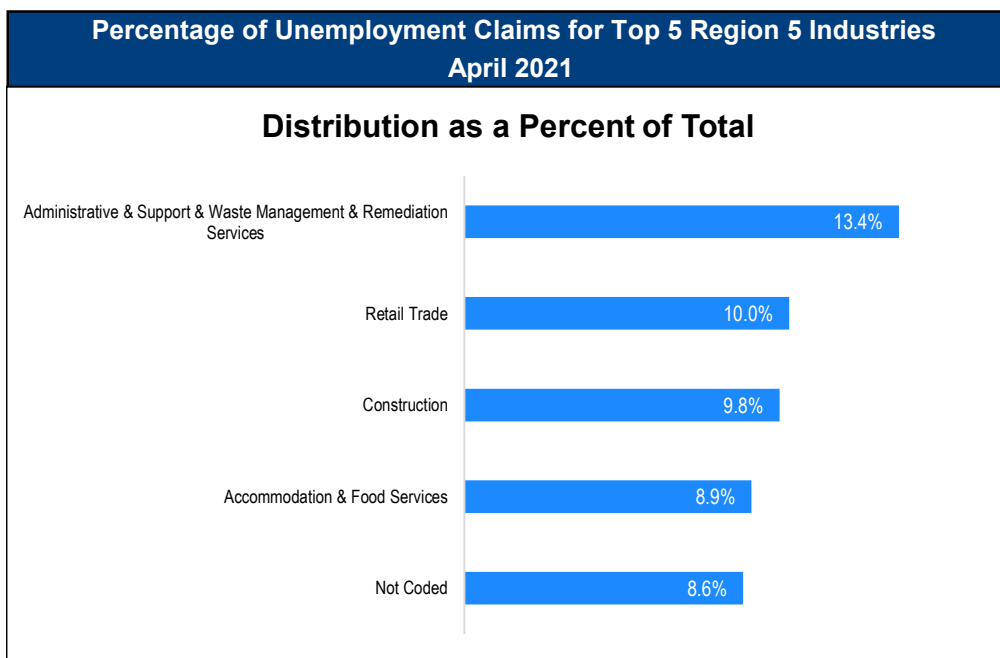
#88 - Boone (2.5%)

Source: Indiana Department of Workforce Development, Research and Development, Local Area Unemployment Statistics

Source: Indiana Department of Workforce Development, Research & Analysis, Local Area Unemployment Statistics | Unemployment Statistics Released:05/21  
Notes: The data displayed are presented as estimates only. The most recent month's data are always preliminary and are revised when the next month's data are released.

Consumer Price Index (CPI-U Change), Unadjusted Percent Change to April 2021 from				
CPI Item	Apr-20	Mar-21	Apr-20	Mar-21
	U.S. City		Midwest Region*	
<b>All Items</b>	<b>4.2%</b>	<b>0.8%</b>	<b>4.9%</b>	<b>0.8%</b>
Food & Beverages	2.3%	0.5%	2.1%	0.4%
Housing	2.6%	0.4%	3.4%	0.5%
Apparel	1.9%	-0.1%	1.7%	-0.9%
Transportation	14.9%	3.1%	17.8%	3.3%
Medical Care	1.5%	0%	1.9%	-0.4%
Recreation	2.1%	0.8%	2.7%	0.4%
Education & Communication	1.7%	0.3%	1.5%	-0.1%
Other Goods & Services	2.7%	0.2%	1.9%	0.4%

\*Midwest region = Midwest Urban Average. Midwest Region includes Illinois, Indiana, Iowa, Kansas, Michigan, Minnesota, Missouri, Nebraska, North Dakota, Ohio, South Dakota and Wisconsin | Source: U.S. Bureau of Labor Statistics



Source: Indiana Department of Workforce Development, Research and Analysis

## WARN Notices

WARN Notices for Region 5 for April 2021				
Company	City	County	# of workers affected	Notice Date
Five Star Senior Living Inc. Meadwood	Indianapolis	Marion	96	4/20/2021

Source: Indiana Department of Workforce Development, WARN Notices | For information on WARN Act requirements, you may go to the U.S. Department of Labor Employment Training Administration Fact Sheet: <https://www.doleta.gov/programs/factsht/warn.htm>

## Unemployment Claims: April 2021

### Region 5

#### Initial Claims

04/03/21 - 4,970  
 04/10/21 - 31,380  
 04/17/21 - 21,075  
 04/24/21 - 6,924

#### Continued Claims

04/03/21 - 11,771  
 04/10/21 - 11,750  
 04/17/21 - 12,004  
 04/24/21 - 12,299

#### Total Claims

04/03/21 - 16,741  
 04/10/21 - 43,130  
 04/17/21 - 33,079  
 04/24/21 - 19,223

### State of Indiana

#### Initial Claims

04/03/21 - 8,071  
 04/10/21 - 9,542  
 04/17/21 - 14,026  
 04/24/21 - 14,507

#### Continued Claims

04/03/21 - 57,103  
 04/10/21 - 58,333  
 04/17/21 - 59,616  
 04/24/21 - 64,342

#### Total Claims

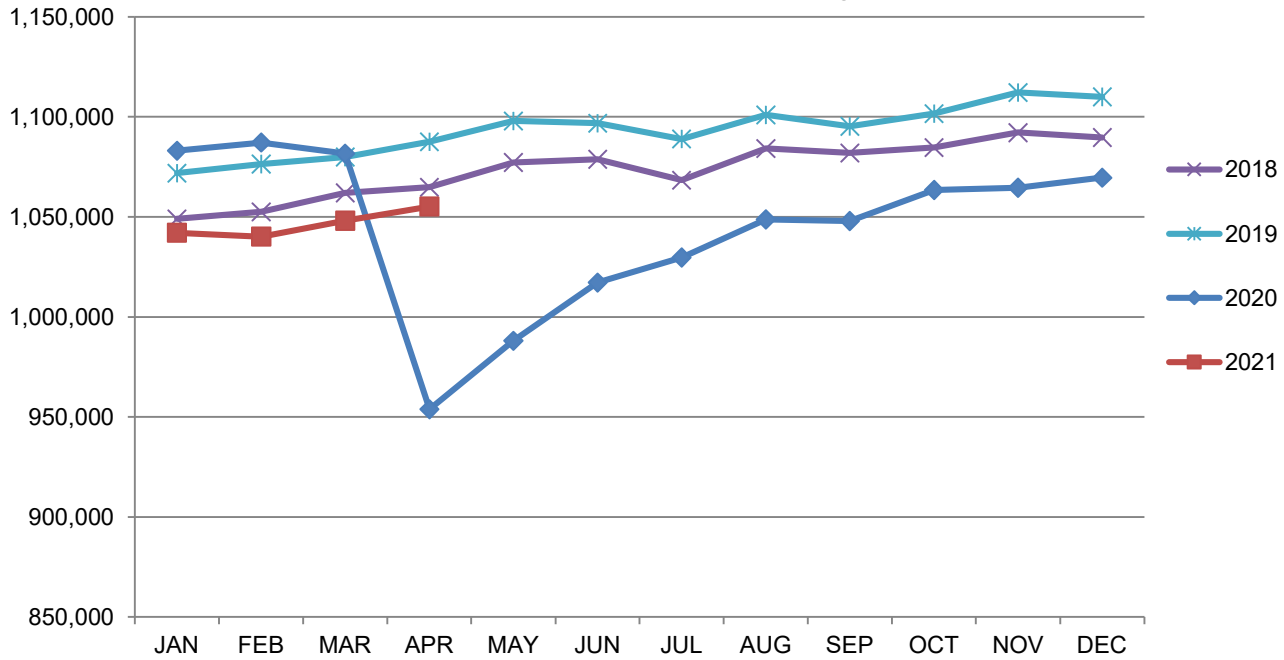
04/03/21 - 65,174  
 04/10/21 - 67,875  
 04/17/21 - 73,642  
 04/24/21 - 78,849

(D) indicates item is affected by non-disclosure issues relating to industry or ownership status | Source: Indiana Department of Workforce Development, Research and Development

Indianapolis-Carmel-Anderson MSA							
Wage and Salaried Employment	April 2021			# Change	% Change	# Change	% Change
Industry	Apr-21	Mar-21	Apr-20	Mar-21 to Apr-21		Apr-20 to Apr-21	
<b>Total Nonfarm</b>	<b>1,055,200</b>	<b>1,048,100</b>	<b>953,800</b>	<b>7,100</b>	<b>0.7%</b>	<b>101,400</b>	<b>10.6%</b>
<b>Total Private</b>	<b>918,200</b>	<b>911,400</b>	<b>818,700</b>	<b>6,800</b>	<b>0.8%</b>	<b>99,500</b>	<b>12.2%</b>
Goods Producing	154,000	150,900	134,900	3,100	2.1%	19,100	14.2%
Service-Providing	901,200	897,200	818,900	4,000	0.5%	82,300	10.1%
Private Service Providing	764,200	760,500	683,800	3,700	0.5%	80,400	11.8%
Mining and Logging	800	700	700	100	14.3%	100	14.3%
Mining, Logging and Construction	61,500	58,600	52,100	2,900	5.0%	9,400	18.0%
Construction	60,700	57,900	51,400	2,800	4.8%	9,300	18.1%
Specialty Trade Contractors	37,500	36,000	32,200	1,500	4.2%	5,300	16.5%
Manufacturing	92,500	92,300	82,800	200	0.2%	9,700	11.7%
Durable Goods	51,800	51,600	45,000	200	0.4%	6,800	15.1%
Transportation Equipment Manufacturing	15,400	15,400	12,800	0	0.0%	2,600	20.3%
Motor Vehicle Parts Manufacturing	10,200	10,200	7,400	0	0.0%	2,800	37.8%
Non-Durable Goods	40,700	40,700	37,800	0	0.0%	2,900	7.7%
Chemical Manufacturing	16,600	16,600	16,400	0	0.0%	200	1.2%
Trade, Transportation, and Utilities	224,300	223,900	205,800	400	0.2%	18,500	9.0%
Wholesale Trade	46,200	46,700	47,900	-500	-1.1%	-1,700	-3.6%
Merchant Wholesalers, Durable Goods	30,700	30,800	30,000	-100	-0.3%	700	2.3%
Retail Trade	101,500	99,600	85,400	1,900	1.9%	16,100	18.9%
General Merchandise Stores	21,300	21,700	19,800	-400	-1.8%	1,500	7.6%
Department Stores	3,500	3,600	2,000	-100	-2.8%	1,500	75.0%
Other General Merchandise Stores	17,800	18,100	17,800	-300	-1.7%	0	0.0%
Transportation, Warehousing, and Utilities	76,600	77,600	72,500	-1,000	-1.3%	4,100	5.7%
Transportation and Warehousing	71,800	72,700	69,100	-900	-1.2%	2,700	3.9%
Information	11,600	11,700	12,000	-100	-0.9%	-400	-3.3%
Telecommunications	3,200	3,200	3,400	0	0.0%	-200	-5.9%
Financial Activities	70,600	71,000	69,100	-400	-0.6%	1,500	2.2%
Finance and Insurance	55,000	55,300	54,000	-300	-0.5%	1,000	1.9%
Insurance Carriers and Related Activities	32,700	32,800	32,800	-100	-0.3%	-100	-0.3%
Insurance Carriers	19,200	19,400	19,800	-200	-1.0%	-600	-3.0%
Professional and Business Services	161,000	160,400	153,300	600	0.4%	7,700	5.0%
Professional, Scientific, and Technical Services	67,800	67,500	66,000	300	0.4%	1,800	2.7%
Management of Companies and Enterprises	12,900	12,900	12,400	0	0.0%	500	4.0%
Administrative and Support and Waste Management and Remediation Services	80,300	80,000	74,900	300	0.4%	5,400	7.2%
Administrative and Support Services	76,500	76,200	70,800	300	0.4%	5,700	8.1%
Employment Services	39,700	39,600	33,000	100	0.3%	6,700	20.3%
Education and Health Services	164,200	164,000	152,000	200	0.1%	12,200	8.0%
Educational Services	18,100	18,700	18,000	-600	-3.2%	100	0.6%
Health Care and Social Assistance	146,100	145,300	134,000	800	0.6%	12,100	9.0%
Ambulatory Health Care Services	59,300	59,500	52,200	-200	-0.3%	7,100	13.6%
Hospitals	43,900	44,000	43,100	-100	-0.2%	800	1.9%
Leisure and Hospitality	93,200	90,800	60,600	2,400	2.6%	32,600	53.8%
Accommodation and Food Services	78,100	77,400	51,700	700	0.9%	26,400	51.1%
Food Services and Drinking Places	72,800	72,300	47,500	500	0.7%	25,300	53.3%
Restaurants and Other Eating Places	66,600	67,500	43,500	-900	-1.3%	23,100	53.1%
Full-service restaurants	31,900	31,600	15,100	300	1.0%	16,800	111.3%
Limited-Service Restaurants and Other Eating Places	34,700	35,900	28,400	-1,200	-3.3%	6,300	22.2%
Other Services	39,300	38,700	31,000	600	1.6%	8,300	26.8%
<b>Total Government</b>	<b>137,000</b>	<b>136,700</b>	<b>135,100</b>	<b>300</b>	<b>0.2%</b>	<b>1,900</b>	<b>1.4%</b>
Federal Government	17,800	17,700	17,800	100	0.6%	0	0.0%
State Government	34,400	34,500	34,400	-100	-0.3%	0	0.0%
Local Government	84,800	84,500	82,900	300	0.4%	1,900	2.3%
Local Government Educational Services	41,300	42,600	41,300	-1,300	-3.1%	0	0.0%

Source: Indiana Dept of Workforce Development, Research and Analysis, Current Employment Statistics

## Indianapolis-Carmel-Anderson MSA Employment Trends



### Frequently Listed Jobs

Top 20 job listings by number of openings in Region 5 in the past month

Rank	Occupations
1	Laborers and Freight, Stock, and Material Movers, Hand
2	Order Fillers, Wholesale and Retail Sales
3	Marketing Managers
4	Production Workers, All Other
5	Software Developers, Applications
6	Landscaping and Groundskeeping Workers
7	Customer Service Representatives
8	Retail Salespersons
9	Maintenance and Repair Workers, General
10	Information Technology Project Managers
11	Computer Systems Engineers/Architects
12	Nursing Assistants
13	Registered Nurses
14	Combined Food Preparation and Serving Workers, Including Fast Food
15	Janitors and Cleaners, Except Maids and Housekeeping Cleaners
16	Sales Representatives, Wholesale and Manufacturing, Technical and Scientific Products
17	Management Analysts
18	Licensed Practical and Licensed Vocational Nurses
19	Accountants
20	Heavy and Tractor-Trailer Truck Drivers

Source: Indiana Workforce Development, Indiana Career Connect

### Applicant Pool

Top 20 occupations desired by applicants on their resumes in the past 12 months

Occupations	# of applicants
Customer Service Representatives	7,175
Production Workers, All Other	5,743
Assemblers and Fabricators, All Other	4,864
Stock Clerks and Order Fillers	4,697
Cashiers	4,524
Laborers and Freight, Stock, and Material Movers, Hand	3,889
Helpers--Production Workers	3,830
Office Clerks, General	2,665
Managers, All Other	2,465
Packers and Packagers, Hand	2,285
Nursing Assistants	2,258
Office and Administrative Support Workers, All Other	2,134
Executive Secretaries and Executive Administrative Assistants	2,133
Retail Salespersons	1,928
Receptionists and Information Clerks	1,826
Industrial Truck and Tractor Operators	1,765
Combined Food Preparation and Serving Workers, Including Fast Food	1,723
Sales Representatives, Services, All Other	1,552
Administrative Services Managers	1,439
Waiters and Waitresses	1,436

Source: Indiana Workforce Development, Indiana Career Connect

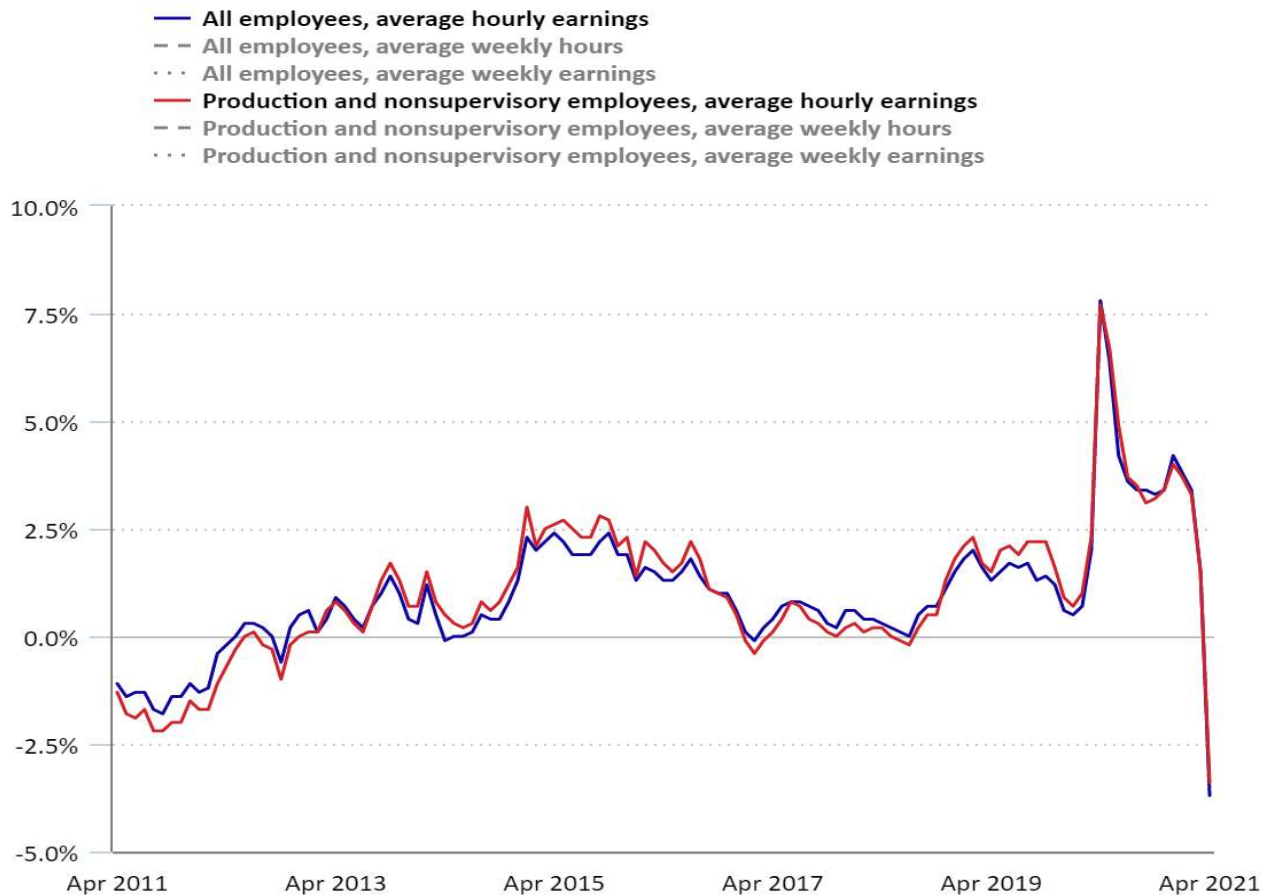
# TED: The Economics Daily

U.S. Bureau of Labor Statistics

## ***Real average weekly earnings decreased 1.4 percent for year ended April 2021***

Real average hourly earnings decreased 3.7 percent from April 2020 to April 2021. The change in real average hourly earnings combined with an increase of 2.3 percent in the average workweek resulted in a 1.4-percent decrease in real average weekly earnings over this period.

### **12-month percent change in real hourly and weekly earnings, private sector employees, April 2011 to April 2021**



Click legend items to change data display. Hover over chart to view data.  
Source: U.S. Bureau of Labor Statistics.



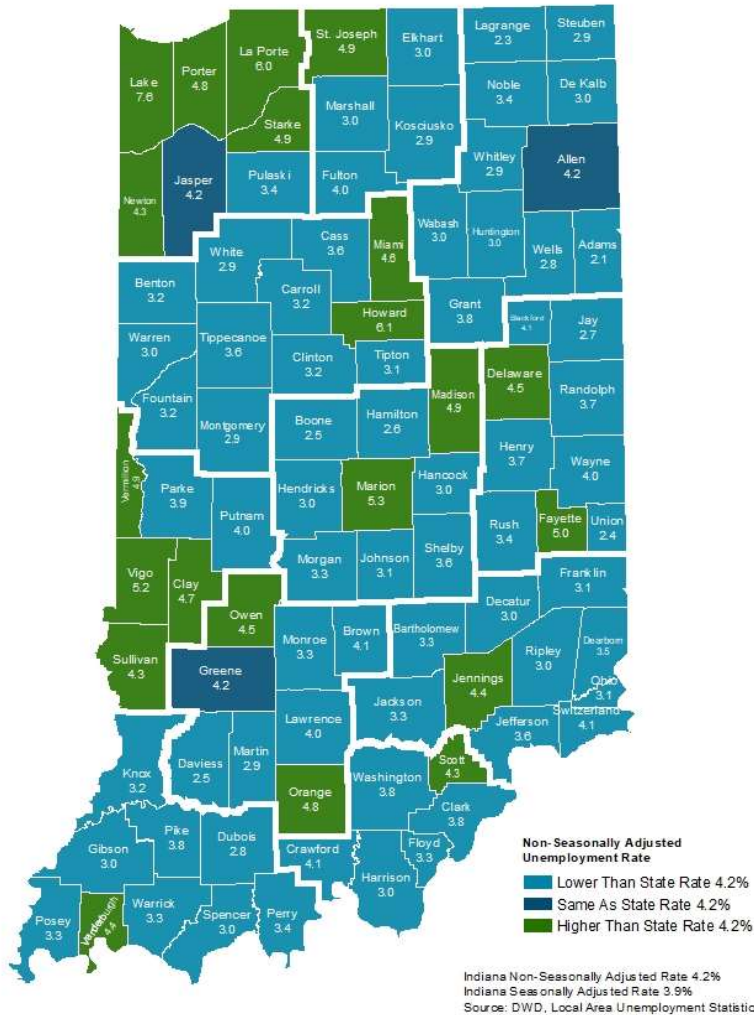
From April 2020 to April 2021, real average hourly earnings decreased 3.4 percent for production and nonsupervisory employees. The change in real average hourly earnings combined with a 2.7-percent increase in the average workweek resulted in a 0.8-percent decrease in real average weekly earnings over the year.

These data are from the Current Employment Statistics survey and are seasonally adjusted. Earnings for the most recent 2 months are preliminary. For more information, see "Real Earnings — April 2021." The Consumer Price Index is used to adjust earnings for inflation.

# County Unemployment Rates April 2021



INDIANA  
DEPARTMENT OF  
**WORKFORCE**  
DEVELOPMENT



## Questions?

Please contact the DWD  
Research and Analysis  
Regional Labor Analyst  
listed below:

Joe Smagacz

Regional Labor Analyst  
Research and Analysis

[Indiana Department of  
Workforce Development](https://www.in.gov/workforce)

10 N. Senate Ave, SE 209

Indianapolis, IN 46204

317-232-8539

[jsmagacz@dwd.in.gov](mailto:jsmagacz@dwd.in.gov)