



HOOSIERS BY THE NUMBERS

Your premier source for labor market information for Indiana.



INDIANA
DEPARTMENT OF
WORKFORCE
DEVELOPMENT

LABOR MARKET REVIEW



April 2021 Labor Market Review

Reported by: **Cassie Janes**

Regional Workforce Analyst

[Email Cassie](#)

cjanes@dwd.in.gov

Tel: 765-454-4760



INDIANA
DEPARTMENT OF
WORKFORCE
DEVELOPMENT

LABOR MARKET REVIEW

Economic Growth Region 4

Statistical Data Report for April 2021, Released June 2021

State Employment and Unemployment

Unemployment rates were lower in April in 12 states and the District of Columbia and stable in 38 states, the U.S. Bureau of Labor Statistics reported. Forty-eight states and the District had jobless rate decreases from a year earlier and two states had little change. The national unemployment rate, 6.1 percent, was little changed over the month, but was 8.7 percentage points lower than in April 2020.



Economic Growth Region (EGR) 4

Benton, Carroll, Cass, Clinton, Fountain, Howard, Miami, Montgomery, Tippecanoe, Tipton, Warren and White Counties.

April 2021 Labor Force Estimates (not seasonally adjusted)						
Area	Labor Force	Employed	Unemployed	Apr-21	Mar-21	Apr-20
U.S.	160,379,000	151,160,000	9,220,000	5.7%	6.2%	14.4%
IN	3,327,059	3,187,375	139,684	4.2%	4.6%	16.5%
EGR 4	248,524	239,002	9,522	3.8%	4.2%	16.9%
Kokomo MSA	34,624	32,506	2,118	6.1%	5.9%	31.0%
Lafayette MSA	109,984	106,084	3,900	3.5%	4.0%	12.7%
Benton Co.	4,286	4,149	137	3.2%	3.8%	10.6%
Carroll Co.	9,674	9,364	310	3.2%	3.7%	14.9%
Cass Co.	18,252	17,592	660	3.6%	4.3%	16.0%
Clinton Co.	17,000	16,450	550	3.2%	3.5%	12.9%
Fountain Co.	7,866	7,612	254	3.2%	4.2%	18.2%
Howard Co.	34,624	32,506	2,118	6.1%	5.9%	31.0%
Miami Co.	15,340	14,631	709	4.6%	5.1%	21.5%
Montgomery Co.	18,768	18,229	539	2.9%	3.5%	10.6%
Tippecanoe Co.	96,024	92,571	3,453	3.6%	4.1%	12.5%
Tipton Co.	9,191	8,906	285	3.1%	3.1%	19.2%
Warren Co.	4,123	4,001	122	3.0%	3.6%	12.5%
White Co.	13,376	12,991	385	2.9%	3.4%	11.2%
Attica	1,526	1,469	57	3.7%	5.3%	18.6%
Crawfordsville	7,322	7,059	263	3.6%	4.4%	12.3%
Delphi	1,251	1,206	45	3.6%	5.2%	16.5%
Fowler	1,062	1,028	34	3.2%	4.2%	12.7%
Frankfort	8,076	7,755	321	4.0%	4.0%	12.5%
Kokomo	23,945	22,293	1,652	6.9%	6.7%	32.9%
Lafayette	37,458	35,644	1,814	4.8%	5.0%	17.0%
Logansport	8,049	7,744	305	3.8%	4.7%	14.0%
Monticello	2,657	2,571	86	3.2%	3.9%	13.3%
Peru	4,604	4,378	226	4.9%	5.4%	21.4%
Tipton	2,725	2,622	103	3.8%	4.1%	19.8%
West Lafayette	22,609	22,103	506	2.2%	2.9%	4.7%
Williamsport	830	807	23	2.8%	4.7%	15.5%

Unemployment Rates by State (seasonally adjusted): April 2021

U.S. - 6.1%

Illinois - 7.1%

Indiana - 3.9%

Kentucky - 4.7%

Michigan - 4.9%

Ohio - 4.7%

Source: U.S. Department of Labor, Bureau of Labor Statistics

Unemployment Rank by County (of 92 counties): April 2021

#2 - Howard (6.1%)

#14 - Miami (4.6%)

#40 - Cass (3.6%)

#43 - Tippecanoe (3.6%)

#56 - Benton (3.2%)

#57 - Carroll (3.2%)

#58 - Clinton (3.2%)

#59 - Fountain (3.2%)

#64 - Tipton (3.1%)

#77 - Warren (3%)

#80 - Montgomery (2.9%)

#82 - White (2.9%)

Source: Indiana Department of Workforce Development, Research and Development, Local Area Unemployment Statistics

Source: Indiana Department of Workforce Development, Research & Analysis, Local Area Unemployment Statistics | Unemployment Statistics Released:05/21 | Notes: The data displayed are presented as estimates only. The most recent month's data are always preliminary and are revised when the next month's data are released.

Consumer Price Index (CPI-U Change), Unadjusted Percent Change to April 2021 from				
CPI Item	Apr-20	Mar-21	Apr-20	Mar-21
	U.S. City		Midwest Region*	
All Items	4.2%	0.8%	4.9%	0.8%
Food & Beverages	2.3%	0.5%	2.1%	0.4%
Housing	2.6%	0.4%	3.4%	0.5%
Apparel	1.9%	-0.1%	1.7%	-0.9%
Transportation	14.9%	3.1%	17.8%	3.3%
Medical Care	1.5%	0%	1.9%	-0.4%
Recreation	2.1%	0.8%	2.7%	0.4%
Education & Communication	1.7%	0.3%	1.5%	-0.1%
Other Goods & Services	2.7%	0.2%	1.9%	0.4%

*Midwest region = Midwest Urban Average. Midwest Region includes Illinois, Indiana, Iowa, Kansas, Michigan, Minnesota, Missouri, Nebraska, North Dakota, Ohio, South Dakota and Wisconsin | Source: U.S. Bureau of Labor Statistics

Unemployment Claims: April 2021

Region 4

Initial Claims

04/03/21 - 1,056(D)
 04/10/21 - 4,950
 04/17/21 - 4,507
 04/24/21 - 4,836

Continued Claims

04/03/21 - 2,819
 04/10/21 - 2,644
 04/17/21 - 2,834
 04/24/21 - 4,549

Total Claims

04/03/21 - 3,875
 04/10/21 - 7,594
 04/17/21 - 7,341
 04/24/21 - 9,385

State of Indiana

Initial Claims

04/03/21 - 8,071
 04/10/21 - 9,542
 04/17/21 - 14,026
 04/24/21 - 14,507

Continued Claims

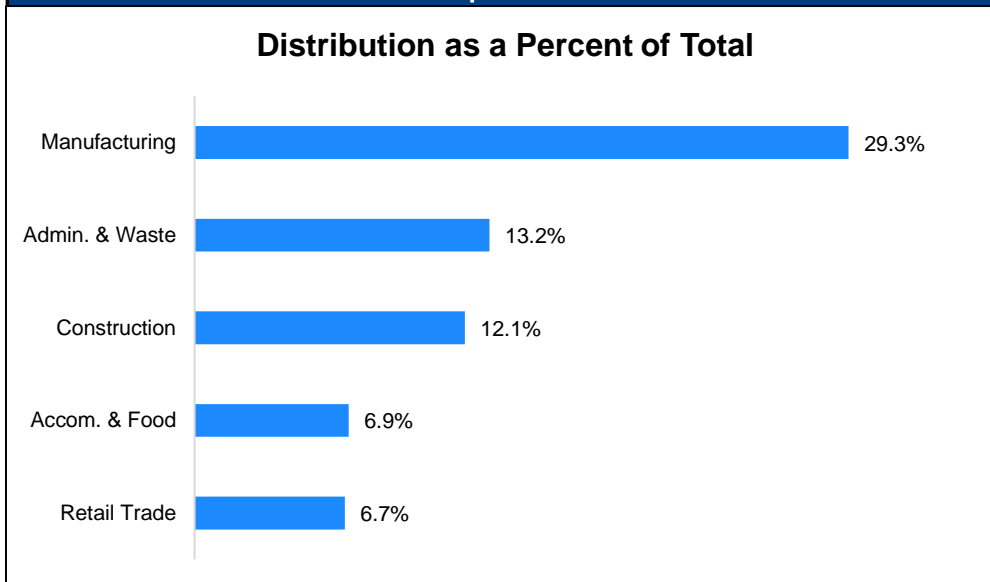
04/03/21 - 57,103
 04/10/21 - 58,333
 04/17/21 - 59,616
 04/24/21 - 64,342

Total Claims

04/03/21 - 65,174
 04/10/21 - 67,875
 04/17/21 - 73,642
 04/24/21 - 78,849

(D) indicates item is affected by non-disclosure issues relating to industry or ownership status | Source: Indiana Department of Workforce Development, Research and Development

Percentage of Unemployment Claims for Top 5 Region 4 Industries April 2021



Source: Indiana Department of Workforce Development, Research and Analysis

WARN Notices

WARN Notices for Region 4 for April 2021				
Company	City	County	# of workers affected	Notice Date
Rose Acre Farms, Inc.	Monon	White	94	4/15/2021

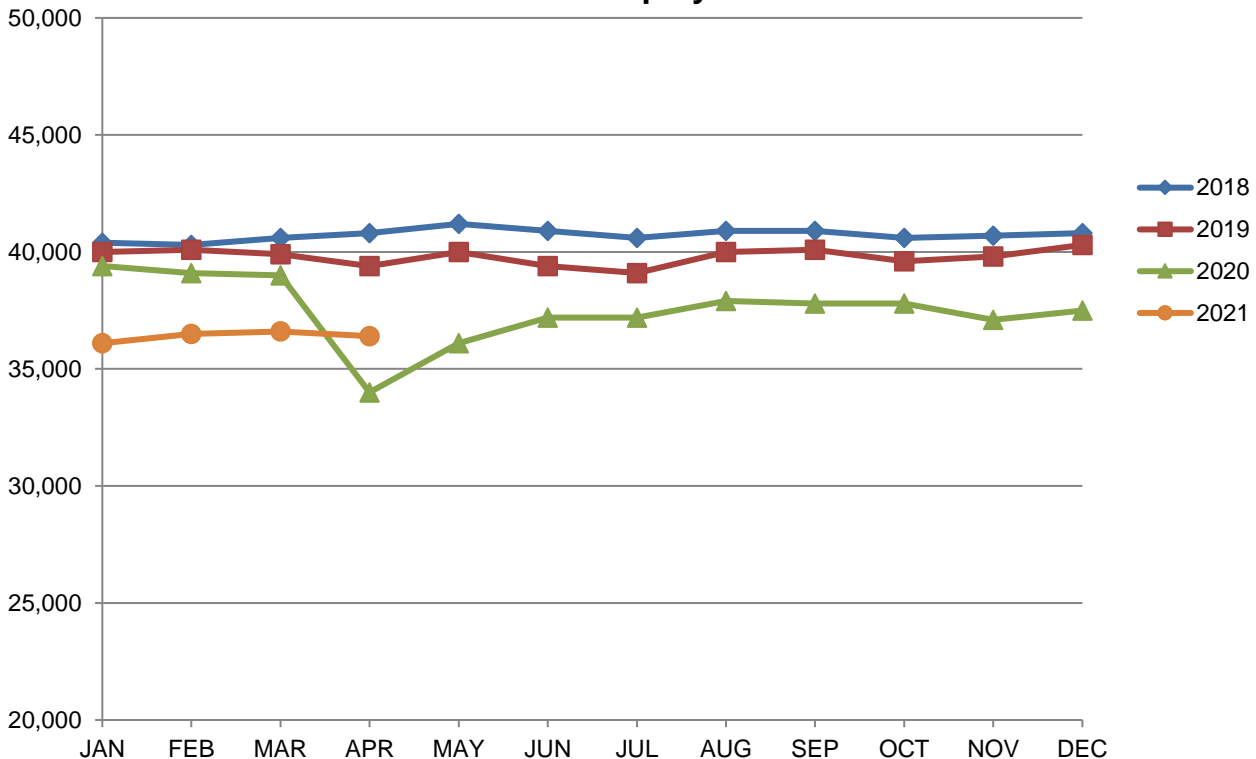
Source: Indiana Department of Workforce Development, WARN Notices | For information on WARN Act requirements, you may go to the U.S. Department of Labor Employment Training Administration Fact Sheet:

<https://www.doleta.gov/programs/factsht/warn.htm>

Kokomo MSA							
Wage and Salaried Employment	April 2021			# Change	% Change	# Change	% Change
Industry	Apr-21	Mar-21	Apr-20	Mar-21 to Apr-21		Apr-20 to Apr-21	
Total Nonfarm	36,400	36,600	34,000	-200	-0.6%	2,400	7.1%
Total Private	31,900	32,100	29,600	-200	-0.6%	2,300	7.8%
Goods Producing	11,300	11,400	12,300	-100	-0.9%	-1,000	-8.1%
Service-Providing	25,100	25,200	21,700	-100	-0.4%	3,400	15.7%
Private Service Providing	20,600	20,700	17,300	-100	-0.5%	3,300	19.1%
Mining, Logging and Construction	1,300	1,300	1,100	0	0.0%	200	18.2%
Manufacturing	10,000	10,100	11,200	-100	-1.0%	-1,200	-10.7%
Trade, Transportation, and Utilities	6,300	6,300	5,400	0	0.0%	900	16.7%
Wholesale Trade	900	900	800	0	0.0%	100	12.5%
Retail Trade	4,500	4,500	3,800	0	0.0%	700	18.4%
Transportation, Warehousing, and Utilities	900	900	800	0	0.0%	100	12.5%
Information	200	200	200	0	0.0%	0	0.0%
Financial Activities	1,200	1,200	1,100	0	0.0%	100	9.1%
Leisure and Hospitality	4,100	3,900	2,500	200	5.1%	1,600	64.0%
Other Services	1,800	1,800	1,200	0	0.0%	600	50.0%
Government	4,500	4,500	4,400	0	0.0%	100	2.3%
Local Government	3,300	3,300	3,200	0	0.0%	100	3.1%
Local Government Educational Services	2,000	2,000	1,900	0	0.0%	100	5.3%
Local Government excluding Educational Services	1,300	1,300	1,300	0	0.0%	0	0.0%

Source: Indiana Dept of Workforce Development, Research and Analysis, Current Employment Statistics

Kokomo MSA Employment Trends

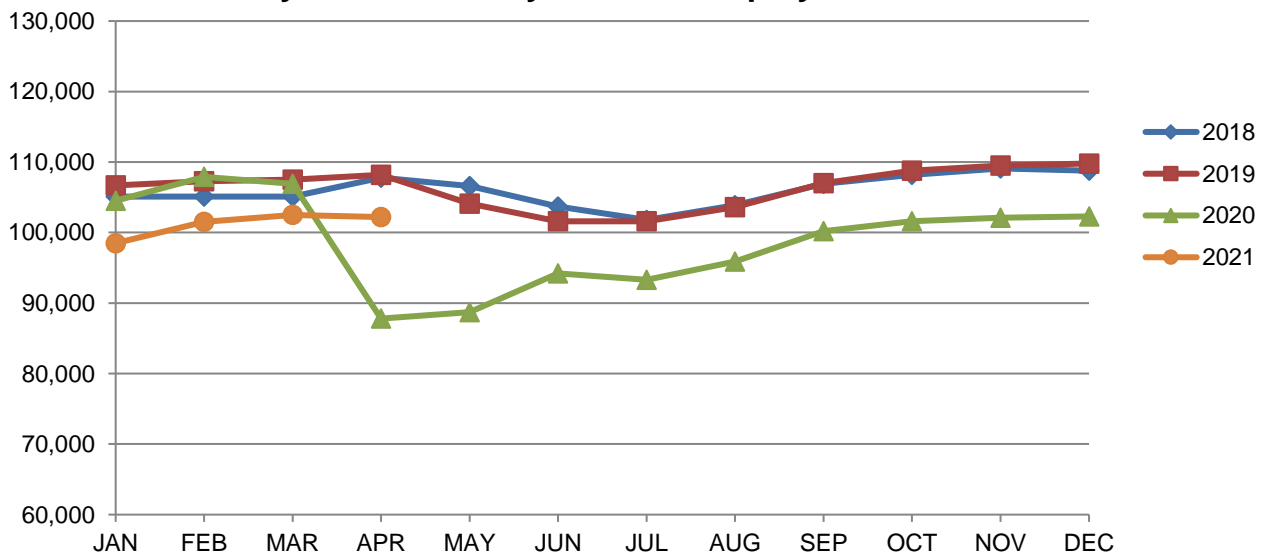


Source: Indiana Department of Workforce Development, Research & Analysis, Current Employment Statistics | Note: Historical data for the most recent 4 years (both seasonally adjusted and not seasonally adjusted) are revised near the beginning of each calendar year, prior to the release of January estimates for statewide data.

Lafayette-West Lafayette MSA							
Wage and Salaried Employment	April 2021			# Change	% Change	# Change	% Change
Industry	Apr-21	Mar-21	Apr-20	Mar-21 to Apr-21		Apr-20 to Apr-21	
Total Nonfarm	102,200	102,500	87,800	-300	-0.3%	14,400	16.4%
Total Private	75,500	75,400	62,200	100	0.1%	13,300	21.4%
Goods Producing	22,800	22,800	18,500	0	0.0%	4,300	23.2%
Service Providing	79,400	79,700	69,300	-300	-0.4%	10,100	14.6%
Private Service Providing	52,700	52,600	43,700	100	0.2%	9,000	20.6%
Mining, Logging and Construction	3,700	3,600	3,500	100	2.8%	200	5.7%
Manufacturing	19,100	19,200	15,000	-100	-0.5%	4,100	27.3%
Durable Goods	14,600	14,600	10,500	0	0.0%	4,100	39.1%
Trade, Transportation and Utilities	14,700	14,400	11,900	300	2.1%	2,800	23.5%
Wholesale Trade	2,200	2,200	2,300	0	0.0%	-100	-4.4%
Retail Trade	9,600	9,400	7,500	200	2.1%	2,100	28.0%
Transportation, Warehousing and Utilities	2,900	2,800	2,100	100	3.6%	800	38.1%
Information	600	600	600	0	0.0%	0	0.0%
Financial Activities	3,100	3,100	3,200	0	0.0%	-100	-3.1%
Professional and Business Services	7,000	7,200	6,400	-200	-2.8%	600	9.4%
Education and Health Services	13,500	13,500	12,400	0	0.0%	1,100	8.9%
Leisure and Hospitality	9,600	9,600	5,800	0	0.0%	3,800	65.5%
Accommodation and Food Services	8,500	8,400	5,500	100	1.2%	3,000	54.6%
Other Services	4,200	4,200	3,400	0	0.0%	800	23.5%
Total Government	26,700	27,100	25,600	-400	-1.5%	1,100	4.3%
Federal Government	500	500	500	0	0.0%	0	0.0%
State Government	19,700	19,800	18,400	-100	-0.5%	1,300	7.1%
Local Government	6,500	6,800	6,700	-300	-4.4%	-200	-3.0%
Local Government Educational Services	4,100	4,100	4,100	0	0.0%	0	0.0%

Source: Indiana Dept of Workforce Development, Research and Analysis, Current Employment Statistics

Lafayette-West Lafayette MSA Employment Trends



Source: Indiana Department of Workforce Development, Research & Analysis, Current Employment Statistics | Note: Historical data for the most recent 4 years (both seasonally adjusted and not seasonally adjusted) are revised near the beginning of each calendar year, prior to the release of January estimates for statewide data.

Frequently Listed Jobs	
Top 20 job listings by number of openings in Region 4 in the past month	
Rank	Occupations
1	Combined Food Preparation and Serving Workers, Including Fast Food
2	Farmworkers and Laborers, Crop
3	Food Preparation Workers
4	Production Workers, All Other
5	Nursing Assistants
6	Team Assemblers
7	Registered Nurses
8	Taxi Drivers and Chauffeurs
9	First-Line Supervisors of Production and Operating Workers
10	Licensed Practical and Licensed Vocational Nurses
11	Managers, All Other
12	Maintenance and Repair Workers, General
13	First-Line Supervisors of Food Preparation and Serving Workers
14	Customer Service Representatives
15	Merchandise Displayers and Window Trimmers
16	Sales Representatives, Wholesale and Manufacturing, Except Technical and Scientific Products
17	Assemblers and Fabricators, All Other
18	Construction Laborers
19	Tellers
20	Cooks, Institution and Cafeteria

Source: Indiana Workforce Development, Indiana Career Connect

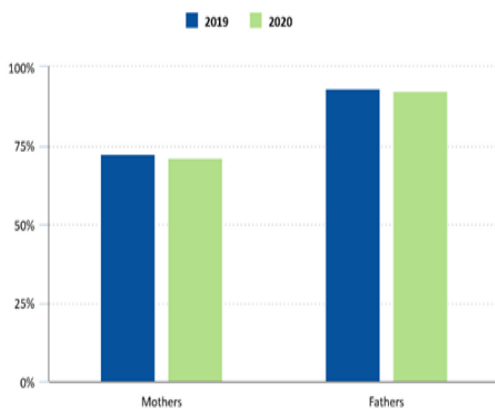
Applicant Pool	
Top 20 occupations desired by applicants on their resumes in the past 12 months	
Occupations	# of applicants
Production Workers, All Other	6377
Assemblers and Fabricators, All Other	5185
Helpers--Production Workers	3279
Laborers and Freight, Stock, and Material Movers, Hand	2343
Cashiers	1784
Customer Service Representatives	1278
Industrial Truck and Tractor Operators	1035
Extraction Workers, All Other	1033
Office and Administrative Support Workers, All Other	1021
Managers, All Other	1010
Stock Clerks and Order Fillers	1005
Office Clerks, General	982
Team Assemblers	971
First-Line Supervisors of Production and Operating Workers	893
Welders, Cutters, Solderers, and Brazers	885
Electrical and Electronic Equipment Assemblers	864
Inspectors, Testers, Sorters, Samplers, and Weighers	844
Retail Salespersons	826
Nursing Assistants	805
Combined Food Preparation and Serving Workers, Including Fast Food	793

Source: Indiana Workforce Development, Indiana Career Connect

TED: The Economics Daily

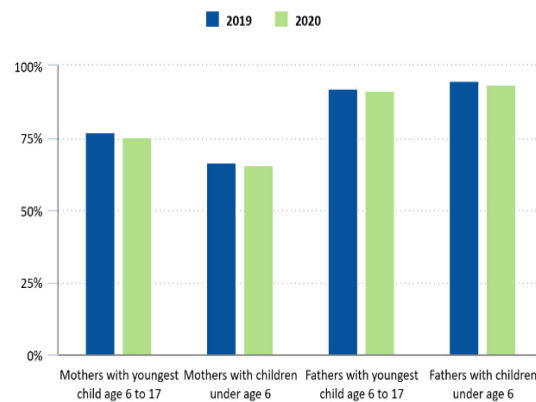
Labor force participation declines for mothers and fathers in 2020 The labor force participation rate for mothers with children under the age of 18 was 71.2 percent in 2020, down from 72.3 percent in 2019. The participation rate for fathers with children under the age of 18, at 92.3 percent in 2020, also declined from the rate in 2019 (93.3 percent). This decline in labor force participation among parents, especially mothers, likely reflects not only pandemic-related job losses, but also the shift of many schools to distance learning and the temporary closure of many daycare facilities during the pandemic.

Labor force participation rates of mothers and fathers, 2019 and 2020



Source: U.S. Bureau of Labor Statistics.

Labor force participation rates of mothers and fathers, by age of youngest child, 2019 and 2020

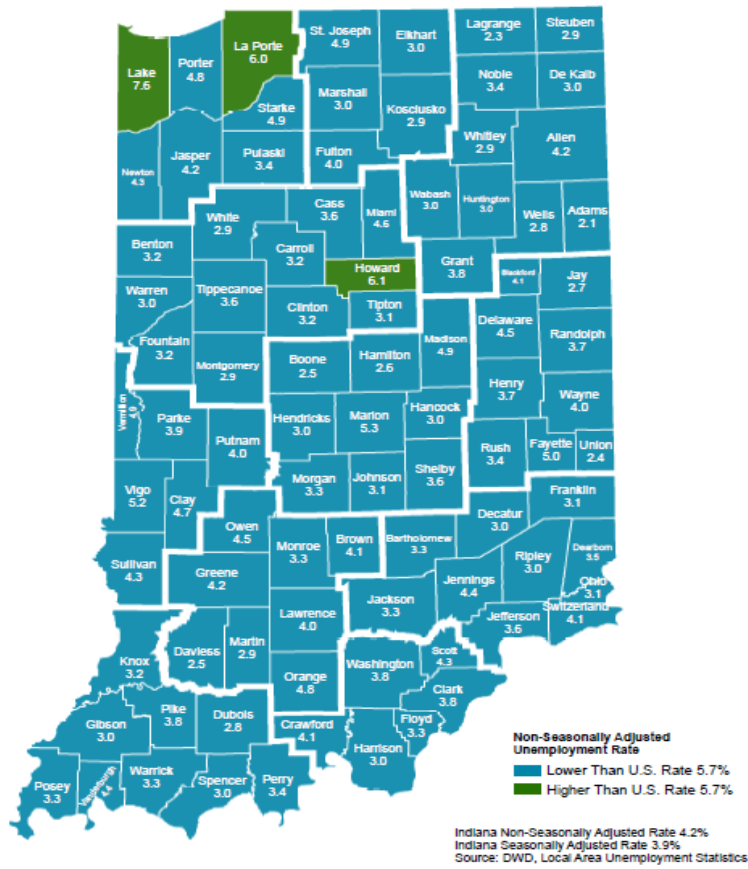


Source: U.S. Bureau of Labor Statistics.

In 2020, mothers of older children remained more likely to participate in the labor force than mothers with younger children. The participation rate for mothers with children under the age of 6, at 65.8 percent, was lower than that of mothers whose youngest child was age 6 to 17, at 75.4 percent. By comparison, fathers with children under age 6 were more likely to participate in the labor force than those whose youngest child was age 6 to 17 (93.4 percent versus 91.4 percent).

These data are from the Current Population Survey. For more information, see "Employment Characteristics of Families — 2020." Parents are people with own children who are under age 18 living in the household. Own children are sons, daughters, step-children, or adopted children. Not included are nieces, nephews, grandchildren, other related or unrelated children, and children not living in the household. Bureau of Labor Statistics, U.S. Department of Labor, The Economics Daily, Labor force participation declines for mothers and fathers in 2020 at <https://www.bls.gov/opub/ted/2021/labor-force-participation-declines-for-mothers-and-fathers-in-2020.htm> (visited May 04, 2021).

County Unemployment Rates April 2021 - Non Seasonally Adjusted



INDIANA
DEPARTMENT OF
WORKFORCE
DEVELOPMENT

Questions?

Please contact the DWD
Research and Analysis
Regional Labor Analyst
listed below:

Cassie Janes
Regional Labor Analyst
Research and Analysis

[Indiana Department of
Workforce Development](http://www.in.gov/dwd)

709 S. Reed Rd
Kokomo, IN 46901
765-454-4760

cjan@dw.in.gov