



# HOOSIERS BY THE NUMBERS

Your premier source for labor market information for Indiana.

# DWD

INDIANA DEPARTMENT OF  
**WORKFORCE**  
DEVELOPMENT

## LABOR MARKET REVIEW



## March 2026 Labor Market Review

Reported by: Kathy Jaworski

Regional Workforce Analyst

[Email Kathy](#)

[kjaworski@dwd.in.gov](mailto:kjaworski@dwd.in.gov)

Tel: 219-841-6347

# DWD

INDIANA DEPARTMENT OF  
**WORKFORCE**  
DEVELOPMENT



## LABOR MARKET REVIEW

# Economic Growth Region 2

Statistical Data Report for March 2026, Released May 2026

### State Employment and Unemployment

Unemployment rates were little changed in March in all 50 states and the District of Columbia, the U.S. Bureau of Labor Statistics reported. Fourteen states had unemployment rate increases from March 2025, the largest of which were in Connecticut and Florida (+1.1 percentage points each). The only over-the-year rate decreases were in Ohio (-0.7 percentage point) and Indiana (-0.4 point). Thirty-four states and the District of Columbia had jobless rates that were not notably different from those of a year earlier, though some had changes that were at least as large numerically as the significant changes. The national unemployment rate, 4.3 percent, changed little over the month and from March 2025. In March 2026, nonfarm payroll employment increased in 3 states and was essentially unchanged in 47 states and the District of Columbia. Employment increased in Texas (+46,800, or +0.3 percent), Florida (+28,100, or +0.3 percent), and Tennessee (+12,100, or +0.4 percent). Over the year, nonfarm payroll employment decreased in 3 states and the District of Columbia, increased in 3 states, and was essentially unchanged in 44 states. Employment decreased in Maryland (-49,900, or -1.8 percent), the District (-40,300, or -5.3 percent), Oregon (-21,900, or -1.1 percent), and Iowa (-20,700, or -1.3 percent). The job gains occurred in California (+144,700), Texas (+117,200), and Nevada (+28,700).



### Economic Growth Region (EGR) 2

Elkhart, Fulton, Kosciusko, Marshall and St. Joseph Counties

### Unemployment Rates by State (seasonally adjusted): March 2026

U.S. - 4.3%

Illinois - 5.1%

Indiana - 3.3%

Kentucky - 4.2%

Michigan - 5%

Ohio - 4.1%

Source: U.S. Department of Labor, Bureau of Labor Statistics

### Unemployment Rank by County (of 92 counties): March 2026

#10 - Fulton (4.1%)

#19 - St. Joseph (3.9%)

#30 - Elkhart (3.5%)

#44 - Marshall (3.4%)

#69 - Kosciusko (3.2%)

Source: Indiana Department of Workforce Development, Research and Development, Local Area Unemployment Statistics

March 2026 Labor Force Estimates (not seasonally adjusted)						
Area	Labor Force	Employed	Unemployed	Mar-26	Feb-26	Mar-25
U.S.	170,102,000	162,764,000	7,337,000	4.3%	4.7%	4.2%
IN	3,470,481	3,346,967	123,514	3.6%	3.8%	3.8%
EGR 2	300,742	289,769	10,973	3.6%	3.8%	4.1%
Elkhart-Goshen MSA	99,389	95,917	3,472	3.5%	3.6%	4.0%
South Bend-Mishawaka MSA	153,072	146,891	6,181	4.0%	4.2%	4.5%
Elkhart Co.	99,389	95,917	3,472	3.5%	3.6%	4.0%
Fulton Co.	9,326	8,944	382	4.1%	4.6%	4.3%
Kosciusko Co.	39,375	38,116	1,259	3.2%	3.4%	3.6%
Marshall Co.	22,909	22,140	769	3.4%	3.6%	3.7%
St Joseph Co.	129,743	124,652	5,091	3.9%	4.1%	4.3%
Elkhart	25,141	24,183	958	3.8%	3.8%	4.6%
Goshen	15,421	14,840	581	3.8%	3.7%	4.1%
Mishawaka	24,801	23,863	938	3.8%	3.9%	4.3%
Plymouth	5,650	5,458	192	3.4%	3.6%	3.9%
South Bend	47,358	45,349	2,009	4.2%	4.5%	4.6%
Warsaw	7,876	7,642	234	3.0%	3.2%	3.8%

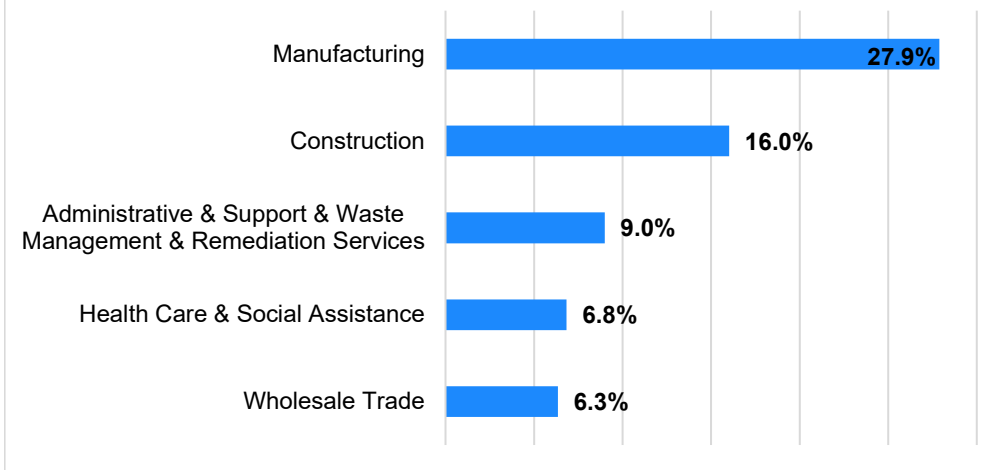
Source: Indiana Department of Workforce Development, Research & Analysis, Local Area Unemployment Statistics | Unemployment Statistics Released:05/26 | Notes: The data displayed are presented as estimates only. The most recent month's data are always preliminary and are revised when the next month's data are released.

Consumer Price Index (CPI-U Change), Unadjusted Percent Change to March 2026 from				
CPI Item	Mar-25	Feb-26	Mar-25	Feb-26
	U.S. City		Midwest Region*	
<b>All Items</b>	<b>3.3%</b>	<b>1.0%</b>	<b>3.4%</b>	<b>0.9%</b>
Food & Beverages	2.6%	0.1%	2.3%	0.0%
Housing	3.4%	0.4%	4.0%	-0.1%
Apparel	3.4%	1.8%	3.6%	0.9%
Transportation	5.0%	5.1%	3.8%	5.4%
Medical Care	3.1%	-0.1%	3.9%	0.1%
Recreation	2.2%	-0.1%	4.3%	0.5%
Education & Communication	0.0%	0.1%	-0.2%	0.0%
Other Goods & Services	3.8%	-0.3%	2.3%	0.7%

\*Midwest region = Midwest Urban Average. Midwest Region includes Illinois, Indiana, Iowa, Kansas, Michigan, Minnesota, Missouri, Nebraska, North Dakota, Ohio, South Dakota and Wisconsin | Source: U.S. Bureau of Labor Statistics

### Percentage of Unemployment Claims for Top 5 Region 2 Industries March 2026

#### Distribution as a Percent of Total



Source: Indiana Department of Workforce Development, Research and Analysis

### WARN Notices

WARN Notices for Region 2 for March 2026				
Company	City	County	# affected	Notice Date

**There are no WARN Notices for March 2026 for Region 2.**

Source: Indiana Department of Workforce Development, WARN Notices | For information on WARN Act requirements, you may go to the U.S. Department of Labor Employment Training Administration Fact Sheet:

<https://www.doleta.gov/programs/factsht/warn.htm>

### Unemployment Claims: March 2026

#### Region 2

##### Initial Claims

03/07/26 - 261(D)  
03/14/26 - 278(D)  
03/21/26 - 221(D)  
03/28/26 - 216(D)

##### Continued Claims

03/07/26 - 1,763  
03/14/26 - 1,693  
03/21/26 - 1,624  
03/28/26 - 1,561

##### Total Claims

03/07/26 - 2,024  
03/14/26 - 1,971  
03/21/26 - 1,845  
03/28/26 - 1,777

#### State of Indiana

##### Initial Claims

03/07/26 - 2,586  
03/14/26 - 2,608  
03/21/26 - 2,418  
03/28/26 - 2,279

##### Continued Claims

03/07/26 - 23,875  
03/14/26 - 22,954  
03/21/26 - 21,974  
03/28/26 - 20,972

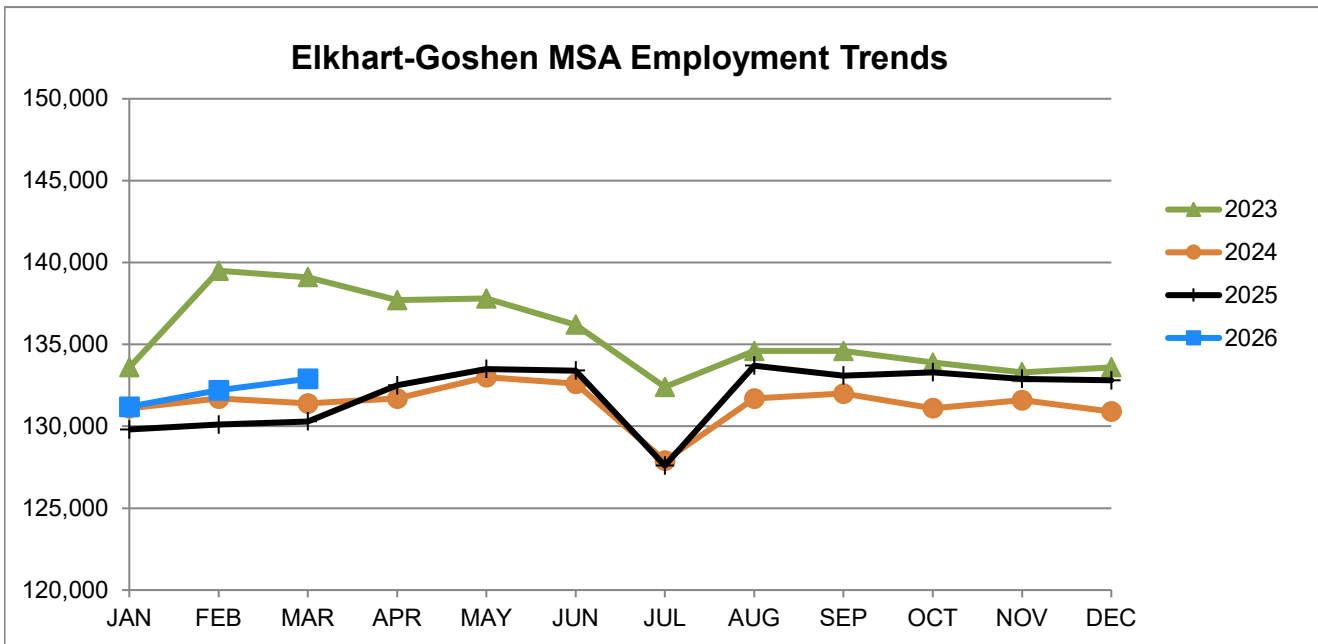
##### Total Claims

03/07/26 - 26,461  
03/14/26 - 25,562  
03/21/26 - 24,392  
03/28/26 - 23,251

Notes: (D) Indicates one or more counties are excluded due to non-disclosure issues | Numbers subject to weekly revision | Source: Indiana Department of Workforce Development, Research and Analysis

Eikhart-Goshen MSA							
Wage and Salaried Employment	March 2026			# Change	% Change	# Change	% Change
Industry	Mar-26	Feb-26	Mar-25	Feb-26 to Mar-26	Mar-25 to Mar-26		
<b>Total Nonfarm</b>	<b>132,900</b>	<b>132,200</b>	<b>130,300</b>	<b>700</b>	<b>0.5%</b>	<b>2,600</b>	<b>2.0%</b>
<b>Total Private</b>	<b>124,400</b>	<b>123,700</b>	<b>121,300</b>	<b>700</b>	<b>0.6%</b>	<b>3,100</b>	<b>2.6%</b>
Goods Producing	66,600	66,300	64,600	300	0.5%	2,000	3.1%
Service-Providing	66,300	65,900	65,700	400	0.6%	600	0.9%
Private Service Providing	57,800	57,400	56,700	400	0.7%	1,100	1.9%
Mining, Logging and Construction	4,700	4,700	4,500	0	0.0%	200	4.4%
Manufacturing	61,900	61,600	60,100	300	0.5%	1,800	3.0%
Durable Goods	52,500	52,500	51,600	0	0.0%	900	1.7%
Transportation Equipment Manufacturing	34,000	33,900	33,300	100	0.3%	700	2.1%
Motor Vehicle Body and Trailer Manufacturing	29,100	29,100	28,600	0	0.0%	500	1.8%
Trade, Transportation, and Utilities	19,700	19,700	19,700	0	0.0%	0	0.0%
Wholesale Trade	7,800	7,800	7,600	0	0.0%	200	2.6%
Retail Trade	9,500	9,500	9,500	0	0.0%	0	0.0%
Transportation, Warehousing, and Utilities	2,400	2,400	2,600	0	0.0%	-200	-7.7%
Information	500	500	500	0	0.0%	0	0.0%
Financial Activities	3,300	3,200	3,200	100	3.1%	100	3.1%
Professional and Business Services	9,800	9,700	9,500	100	1.0%	300	3.2%
Education and Health Services	12,200	12,200	12,300	0	0.0%	-100	-0.8%
Leisure and Hospitality	7,200	7,000	7,100	200	2.9%	100	1.4%
Other Services	5,100	5,100	4,400	0	0.0%	700	15.9%
<b>Government</b>	<b>8,500</b>	<b>8,500</b>	<b>9,000</b>	<b>0</b>	<b>0.0%</b>	<b>-500</b>	<b>-5.6%</b>
Federal Government	200	200	200	0	0.0%	0	0.0%
State Government	300	300	300	0	0.0%	0	0.0%
Local Government	8,000	8,000	8,500	0	0.0%	-500	-5.9%
Local Government Educational Services	5,300	5,300	5,800	0	0.0%	-500	-8.6%

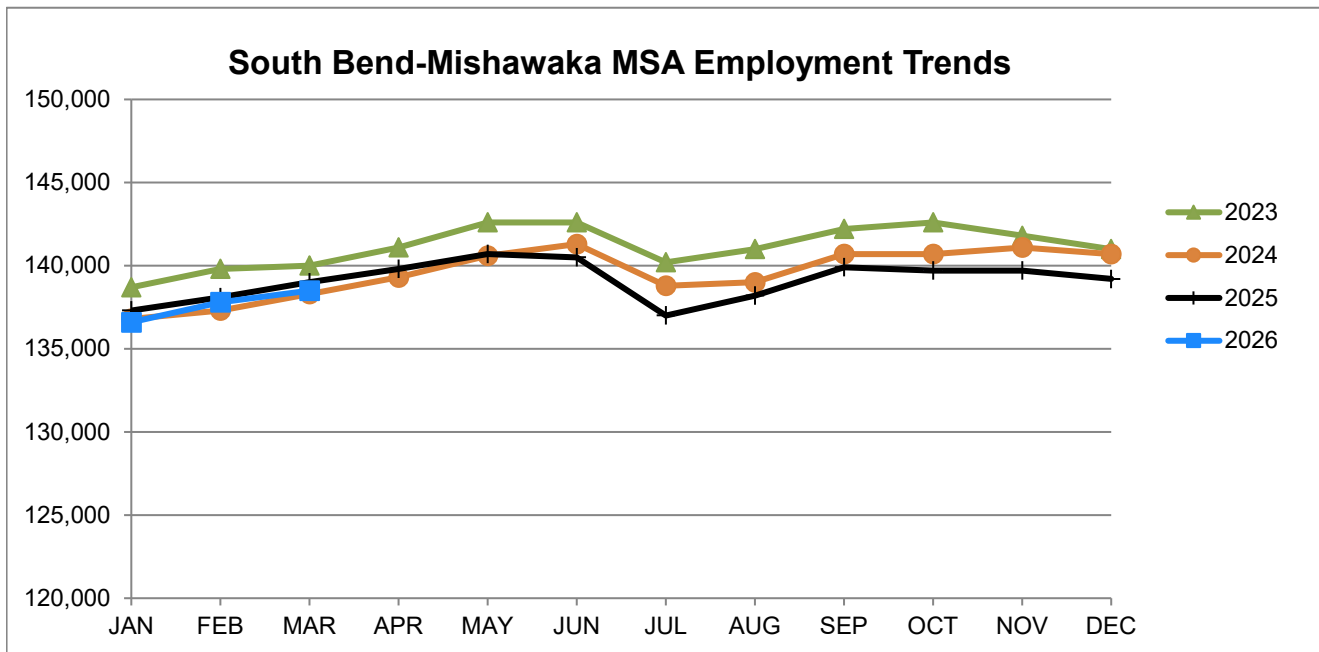
Source: Indiana Dept of Workforce Development, Research and Analysis, Current Employment Statistics



Source: Indiana Department of Workforce Development, Research & Analysis, Current Employment Statistics | Note: Historical data for the most recent 4 years (both seasonally adjusted and not seasonally adjusted) are revised near the beginning of each calendar year, prior to the release of January estimates for statewide data.

South Bend-Mishawaka MSA							
Wage and Salaried Employment	March 2026			# Change	% Change	# Change	% Change
Industry	Mar-26	Feb-26	Mar-25	Feb-26 to Mar-26	Mar-25 to Mar-26		
<b>Total Nonfarm</b>	<b>138,500</b>	<b>137,800</b>	<b>139,000</b>	<b>700</b>	<b>0.5%</b>	<b>-500</b>	<b>-0.4%</b>
<b>Total Private</b>	<b>122,600</b>	<b>122,100</b>	<b>123,400</b>	<b>500</b>	<b>0.4%</b>	<b>-800</b>	<b>-0.7%</b>
Goods Producing	21,400	21,300	21,100	100	0.5%	300	1.4%
Service Providing	117,100	116,500	117,900	600	0.5%	-800	-0.7%
Private Service Providing	101,200	100,800	102,300	400	0.4%	-1,100	-1.1%
Mining, Logging and Construction	6,500	6,500	6,300	0	0.0%	200	3.2%
Manufacturing	14,900	14,800	14,800	100	0.7%	100	0.7%
Trade, Transportation and Utilities	24,500	24,500	24,800	0	0.0%	-300	-1.2%
Wholesale Trade	6,300	6,300	6,500	0	0.0%	-200	-3.1%
Retail Trade	13,900	13,900	13,800	0	0.0%	100	0.7%
General Merchandise Stores	3,500	3,500	3,400	0	0.0%	100	2.9%
Transportation, Warehousing and Utilities	4,300	4,300	4,500	0	0.0%	-200	-4.4%
Information	2,300	2,300	1,900	0	0.0%	400	21.1%
Financial Activities	5,900	5,900	5,900	0	0.0%	0	0.0%
Professional & Business Services	13,300	13,200	12,900	100	0.8%	400	3.1%
Educational & Health Services	34,400	34,400	35,900	0	0.0%	-1,500	-4.2%
Hospitals	7,100	7,100	7,000	0	0.0%	100	1.4%
Leisure & Hospitality	14,700	14,400	14,800	300	2.1%	-100	-0.7%
Food Services and Drinking Places	10,900	10,700	10,900	200	1.9%	0	0.0%
Other Services	6,100	6,100	6,100	0	0.0%	0	0.0%
<b>Total Government</b>	<b>15,900</b>	<b>15,700</b>	<b>15,600</b>	<b>200</b>	<b>1.3%</b>	<b>300</b>	<b>1.9%</b>
Federal Government	900	900	900	0	0.0%	0	0.0%
State Government	2,400	2,400	2,700	0	0.0%	-300	-11.1%
Local Government	12,600	12,400	12,000	200	1.6%	600	5.0%
Local Government Educational Services	7,000	6,900	6,400	100	1.5%	600	9.4%

Source: Indiana Dept of Workforce Development, Research and Analysis, Current Employment Statistics



Source: Indiana Department of Workforce Development, Research & Analysis, Current Employment Statistics | Note: Historical data for the most recent 4 years (both seasonally adjusted and not seasonally adjusted) are revised near the beginning of each calendar year, prior to the release of January estimates for statewide data.

<b>Frequently Listed Jobs</b>	
<b>Top 20 job listings by number of openings in Region 2 in the past month</b>	
<b>Rank</b>	<b>Occupations</b>
1	Registered Nurses
2	Heavy and Tractor-Trailer Truck Drivers
3	Retail Salespersons
4	First-Line Supervisors of Retail Sales Workers
5	Production Workers, All Other
6	Maintenance and Repair Workers, General
7	Laborers and Freight, Stock, and Material Movers, Hand
8	Home Health and Personal Care Aides
9	Licensed Practical and Licensed Vocational Nurses
10	Physicians, All Other
11	Janitors and Cleaners, Except Maids and Housekeeping Cleaners
12	Customer Service Representatives
13	Stockers and Order Fillers
14	Food Service Managers
15	Nursing Assistants
16	Fast Food and Counter Workers
17	Coaches and Scouts
18	Medical and Health Services Managers
19	Health Technologists and Technicians, All Other
20	General and Operations Managers

Source: Lightcast

<b>Applicant Pool</b>	
<b>Top 20 occupations desired by applicants on their resumes in the past 12 months</b>	
<b>Occupations</b>	<b># of applicants</b>
Production Workers, All Other	551
Assemblers and Fabricators, All Other	315
Helpers--Production Workers	252
Customer Service Representatives	214
Laborers and Freight, Stock, and Material Movers, Hand	177
Office Clerks, General	146
Cashiers	126
Team Assemblers	94
Heavy and Tractor-Trailer Truck Drivers	94
Industrial Truck and Tractor Operators	94
First-Line Supervisors of Production and Operating Workers	93
Shipping, Receiving, and Traffic Clerks	92
Office and Administrative Support Workers, All Other	85
Receptionists and Information Clerks	81
Retail Salespersons	73
Welders, Cutters, Solderers, and Brazers	70
Inspectors, Testers, Sorters, Samplers, and Weighers	65
Packers and Packagers, Hand	61
General and Operations Managers	58
Janitors and Cleaners, Except Maids and Housekeeping Cleaners	55

Source: Indiana Workforce Development, Indiana Career Connect

Statewide Average Weekly Hours & Earnings by Industry for March 2026			
Industry	Average Earnings (per hour)	Average # of hours worked (weekly)	Average Earnings (per week)
Construction	\$39.34	37.8	\$1,487.05
Manufacturing	\$26.08	43.4	\$1,131.87
Durable Goods	\$26.81	44.2	\$1,185.00
Fabricated Metal Product Manufacturing	\$24.98	40.7	\$1,016.69
Transportation Equipment Manufacturing	\$27.77	39.4	\$1,094.14
Non-Durable Goods	\$24.28	41.5	\$1,007.62
Retail Trade	\$20.74	29.9	\$620.13
Financial Activities	\$28.66	38.3	\$1,097.68
Health Care and Social Assistance	\$30.90	32.7	\$1,010.43
Accommodation and Food Services	\$17.32	23.1	\$400.09

Source: Indiana Department of Workforce Development, Current Employment Statistics

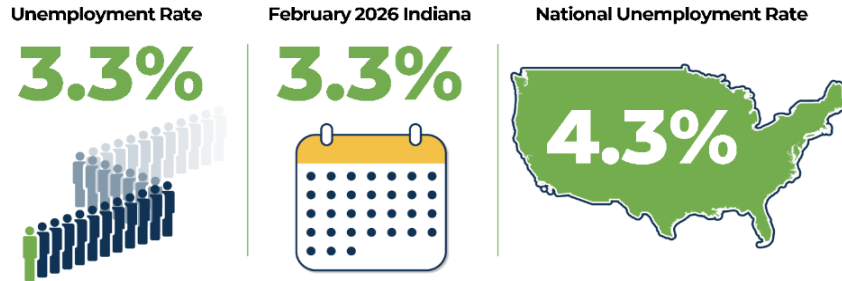
**SNAPSHOT**

## March Indiana Employment

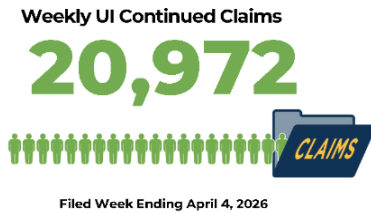
Released May 6, 2026



**Unemployment Rate**  
\*seasonally adjusted



**LABOR FORCE PARTICIPATION RATE\***



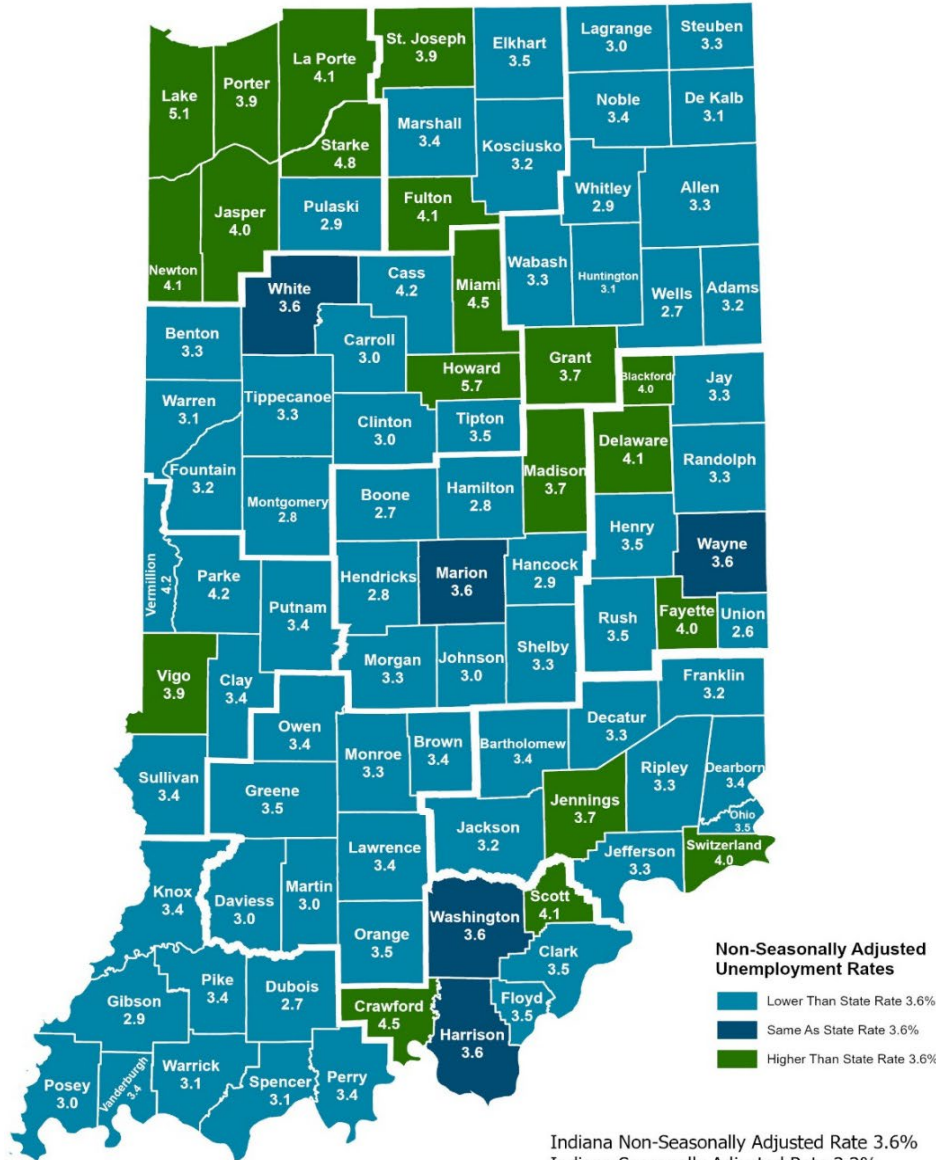
Source: Local Area Unemployment Statistics, Bureau of Labor Statistics, Indiana Career Connect

\* The percentage of Hoosiers 16 and older who are either working or actively looking for work. Those not in the labor force include primarily students, retirees and other non-working populations, such as individuals unable to work due to a disability or illness, or adults responsible for their family's childcare needs.



INDIANA DEPARTMENT OF  
**WORKFORCE**  
DEVELOPMENT

## County Unemployment Rates March 2026



**Non-Seasonally Adjusted Unemployment Rates**

- Lower Than State Rate 3.6%
- Same As State Rate 3.6%
- Higher Than State Rate 3.6%

Indiana Non-Seasonally Adjusted Rate 3.6%  
 Indiana Seasonally Adjusted Rate 3.3%  
 Source: DWD, Local Area Unemployment Statistics

### Questions?

Please contact the DWD  
 Regional Workforce  
 Analyst listed below:

Kathy Jaworski

[Indiana Department of Workforce Development](http://Indiana Department of Workforce Development)

219-841-6347

[kjaworski@dwd.in.gov](mailto:kjaworski@dwd.in.gov)