



HOOSIERS BY THE NUMBERS

Your premier source for labor market information for Indiana.

DWD

INDIANA DEPARTMENT OF
WORKFORCE
DEVELOPMENT

LABOR MARKET REVIEW



April 2025
Labor Market Review

Reported by: Kathy Jaworski

Regional Workforce Analyst

[Email Kathy](#)

kjaworski@dwd.in.gov

Tel: 219-841-6347

DWD

INDIANA DEPARTMENT OF
WORKFORCE
DEVELOPMENT

Economic Growth Region 2

Statistical Data Report for April 2025, Released June 2025

State Employment and Unemployment

Unemployment rates were higher in April in 3 states and the District of Columbia, lower in 2 states, and stable in 45 states, the U.S. Bureau of Labor Statistics reported. In April, three states and the District of Columbia had unemployment rate increases: Massachusetts and the District (+0.2 percentage point each) and Iowa and Virginia (+0.1 point each). Two states had rate decreases: Indiana (-0.2 percentage point) and Nevada (-0.1 point).

Twenty-six states and the District had jobless rate increases from a year earlier, 1 state had a decrease, and 23 states had little change. The national unemployment rate was unchanged at 4.2 percent but was 0.3 percentage point higher than in April 2024.

In April 2025, nonfarm payroll employment increased in 5 states and was essentially unchanged in 45 states and the District of Columbia. Over the year, nonfarm payroll employment increased in 16 states and was essentially unchanged in 34 states and the District. The largest job gains occurred in Texas (+215,500), Florida (+144,100), and New York (+114,300). The largest percentage increases occurred in Hawaii (+2.7 percent), South Carolina (+2.4 percent), and Idaho (+2.3 percent)



Economic Growth Region (EGR) 2

Elkhart, Fulton, Kosciusko, Marshall and St. Joseph Counties

Unemployment Rates by State (seasonally adjusted): April 2025

U.S. - 4.2%

Illinois - 4.8%

Indiana - 3.9%

Kentucky - 5.2%

Michigan - 5.5%

Ohio - 4.9%

Source: U.S. Department of Labor, Bureau of Labor Statistics

Unemployment Rank by County (of 92 counties): April 2025

#18 - Fulton (3.2%)

#21 - St. Joseph (3.2%)

#25 - Elkhart (3.1%)

#46 - Kosciusko (2.9%)

#50 - Marshall (2.8%)

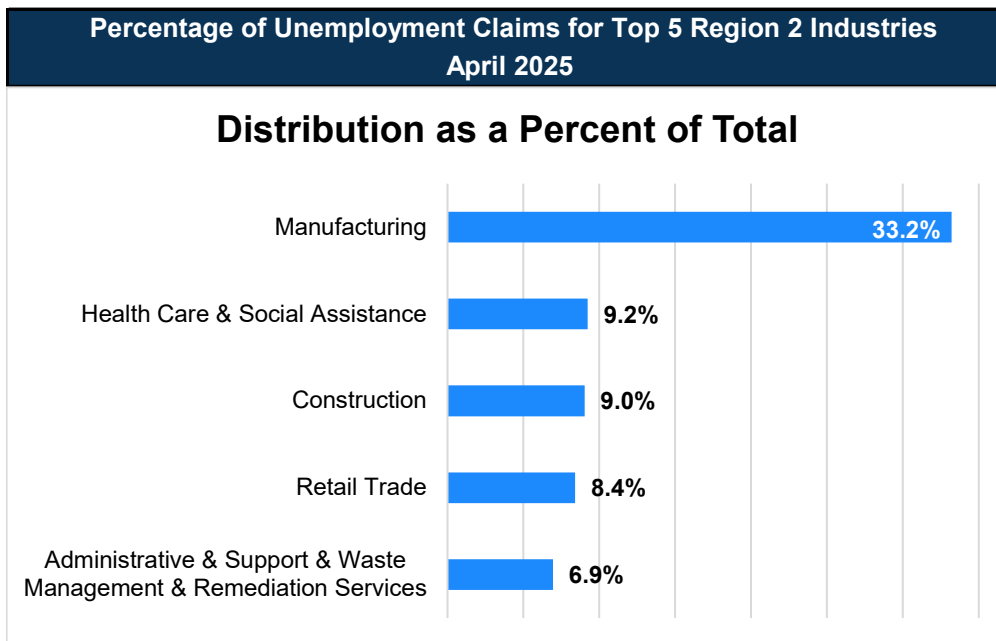
Source: Indiana Department of Workforce Development, Research and Development, Local Area Unemployment Statistics

April 2025 Labor Force Estimates (not seasonally adjusted)						
Area	Labor Force	Employed	Unemployed	Apr-25	Mar-25	Apr-24
U.S.	170,622,000	164,043,000	6,580,000	3.9%	4.2%	3.5%
IN	3,476,454	3,373,288	103,166	3.0%	3.4%	3.6%
EGR 2	300,912	291,601	9,311	3.1%	3.7%	4.2%
Elkhart-Goshen MSA	97,866	94,856	3,010	3.1%	3.6%	4.4%
South Bend-Mishawaka MSA	156,114	150,625	5,489	3.5%	4.1%	4.3%
Elkhart Co.	97,866	94,856	3,010	3.1%	3.6%	4.4%
Fulton Co.	9,456	9,155	301	3.2%	3.9%	3.8%
Kosciusko Co.	39,465	38,338	1,127	2.9%	3.3%	4.0%
Marshall Co.	22,850	22,215	635	2.8%	3.3%	3.6%
St Joseph Co.	131,275	127,037	4,238	3.2%	3.8%	4.3%
Elkhart	24,855	23,943	912	3.7%	4.2%	5.5%
Goshen	15,167	14,705	462	3.0%	3.7%	4.1%
Mishawaka	25,167	24,315	852	3.4%	3.8%	4.6%
Plymouth	5,617	5,464	153	2.7%	3.5%	3.5%
South Bend	47,916	46,226	1,690	3.5%	4.1%	4.7%
Warsaw	7,977	7,709	268	3.4%	3.5%	4.2%

Source: Indiana Department of Workforce Development, Research & Analysis, Local Area Unemployment Statistics | Unemployment Statistics Released:05/25 | Notes: The data displayed are presented as estimates only. The most recent month's data are always preliminary and are revised when the next month's data are released.

Consumer Price Index (CPI-U Change), Unadjusted Percent Change to April 2025 from				
CPI Item	Apr-24	Mar-25	Apr-24	Mar-25
	U.S. City		Midwest Region*	
All Items	2.3%	0.3%	2.4%	0.2%
Food & Beverages	2.7%	0.0%	2.4%	-0.2%
Housing	4.0%	0.4%	4.8%	0.2%
Apparel	-0.7%	-1.1%	-0.9%	-2.5%
Transportation	-1.5%	0.9%	-1.7%	0.8%
Medical Care	2.7%	0.4%	1.4%	0.2%
Recreation	1.6%	-0.1%	1.6%	0.0%
Education & Communication	0.2%	-0.2%	0.3%	0.0%
Other Goods & Services	3.6%	0.3%	3.9%	0.8%

*Midwest region = Midwest Urban Average. Midwest Region includes Illinois, Indiana, Iowa, Kansas, Michigan, Minnesota, Missouri, Nebraska, North Dakota, Ohio, South Dakota and Wisconsin | Source: U.S. Bureau of Labor Statistics



Source: Indiana Department of Workforce Development, Research and Analysis

WARN Notices

WARN Notices for Region 2 for April 2025				
Company	City	County	# affected	Notice Date
Heartland Recreational Vehicles, LLC	Elkhart	Elkhart	147	4/21/2025
SSC Services for Education dba South Bend School District	South Bend	St Joseph	203	4/23/2025

Source: Indiana Department of Workforce Development, WARN Notices | For information on WARN Act requirements, you may go to the U.S. Department of Labor Employment Training Administration Fact Sheet:

<https://www.doleta.gov/programs/factsht/warn.htm>

Unemployment Claims: April 2025

Region 2

Initial Claims

04/05/25 - 207(D)
04/12/25 - 225(D)
04/19/25 - 216(D)
04/26/25 - 284(D)

Continued Claims

04/05/25 - 1,625
04/12/25 - 1,561
04/19/25 - 1,509
04/26/25 - 1,552

Total Claims

04/05/25 - 1,832
04/12/25 - 1,786
04/19/25 - 1,725
04/26/25 - 1,836

State of Indiana

Initial Claims

04/05/25 - 2,496
04/12/25 - 3,104
04/19/25 - 2,609
04/26/25 - 2,566

Continued Claims

04/05/25 - 22,840
04/12/25 - 22,250
04/19/25 - 21,736
04/26/25 - 21,208

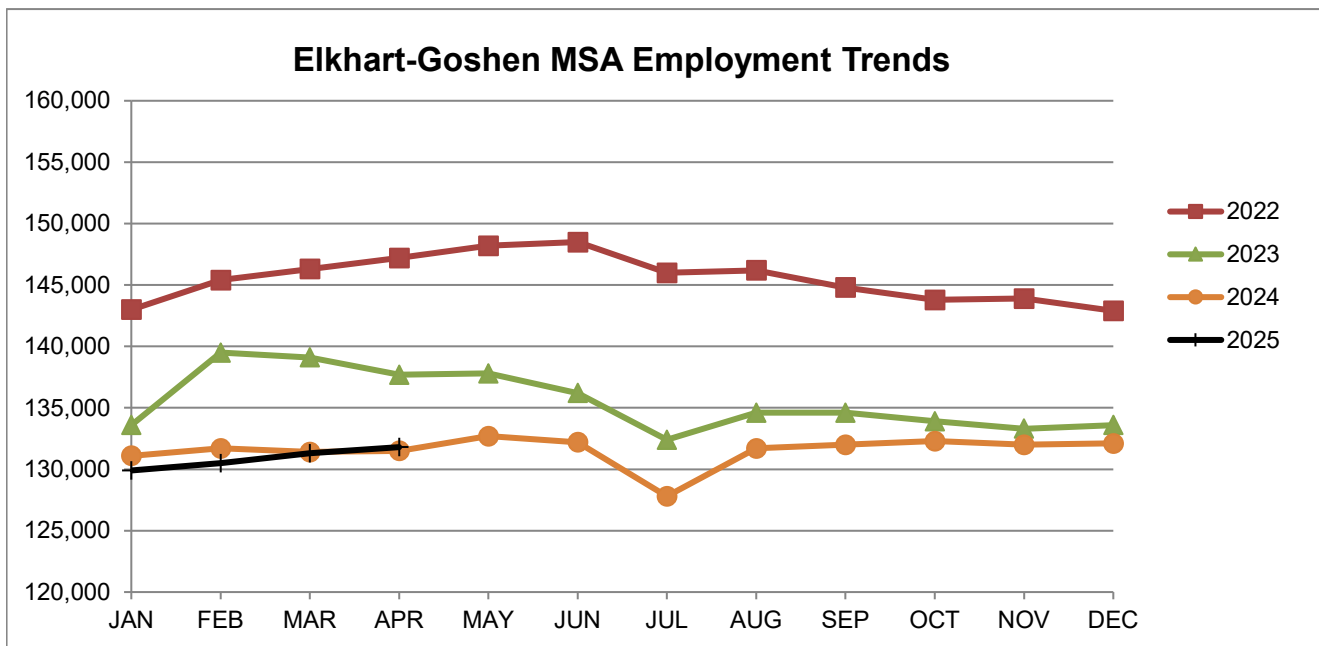
Total Claims

04/05/25 - 25,336
04/12/25 - 25,354
04/19/25 - 24,345
04/26/25 - 23,774

Notes: (D) Indicates one or more counties are excluded due to non-disclosure issues | Numbers subject to weekly revision | Source: Indiana Department of Workforce Development, Research and Analysis

Elkhart-Goshen MSA							
Wage and Salaried Employment	April 2025			# Change	% Change	# Change	% Change
Industry	Apr-25	Mar-25	Apr-24	Mar-25 to Apr-25		Apr-24 to Apr-25	
Total Nonfarm	131,800	131,300	131,500	500	0.4%	300	0.2%
Total Private	122,800	122,100	122,500	700	0.6%	300	0.2%
Goods Producing	65,100	64,900	65,200	200	0.3%	-100	-0.2%
Service-Providing	66,700	66,400	66,300	300	0.5%	400	0.6%
Private Service Providing	57,700	57,200	57,300	500	0.9%	400	0.7%
Mining, Logging and Construction	4,500	4,300	4,300	200	4.7%	200	4.7%
Manufacturing	60,600	60,600	60,900	0	0.0%	-300	-0.5%
Durable Goods	51,500	51,700	52,000	-200	-0.4%	-500	-1.0%
Transportation Equipment Manufacturing	32,400	32,500	33,100	-100	-0.3%	-700	-2.1%
Motor Vehicle Body and Trailer Manufacturing	27,900	28,000	28,400	-100	-0.4%	-500	-1.8%
Trade, Transportation, and Utilities	20,300	20,200	20,400	100	0.5%	-100	-0.5%
Wholesale Trade	7,900	7,900	7,800	0	0.0%	100	1.3%
Retail Trade	9,700	9,700	9,800	0	0.0%	-100	-1.0%
Transportation, Warehousing, and Utilities	2,700	2,600	2,800	100	3.9%	-100	-3.6%
Information	600	600	500	0	0.0%	100	20.0%
Financial Activities	3,100	3,100	3,200	0	0.0%	-100	-3.1%
Professional and Business Services	9,800	9,700	9,500	100	1.0%	300	3.2%
Education and Health Services	12,300	12,200	12,000	100	0.8%	300	2.5%
Leisure and Hospitality	7,200	7,000	7,300	200	2.9%	-100	-1.4%
Other Services	4,400	4,400	4,400	0	0.0%	0	0.0%
Government	9,000	9,200	9,000	-200	-2.2%	0	0.0%
Federal Government	300	300	200	0	0.0%	100	50.0%
State Government	300	300	300	0	0.0%	0	0.0%
Local Government	8,400	8,600	8,500	-200	-2.3%	-100	-1.2%
Local Government Educational Services	5,600	5,800	5,700	-200	-3.5%	-100	-1.8%

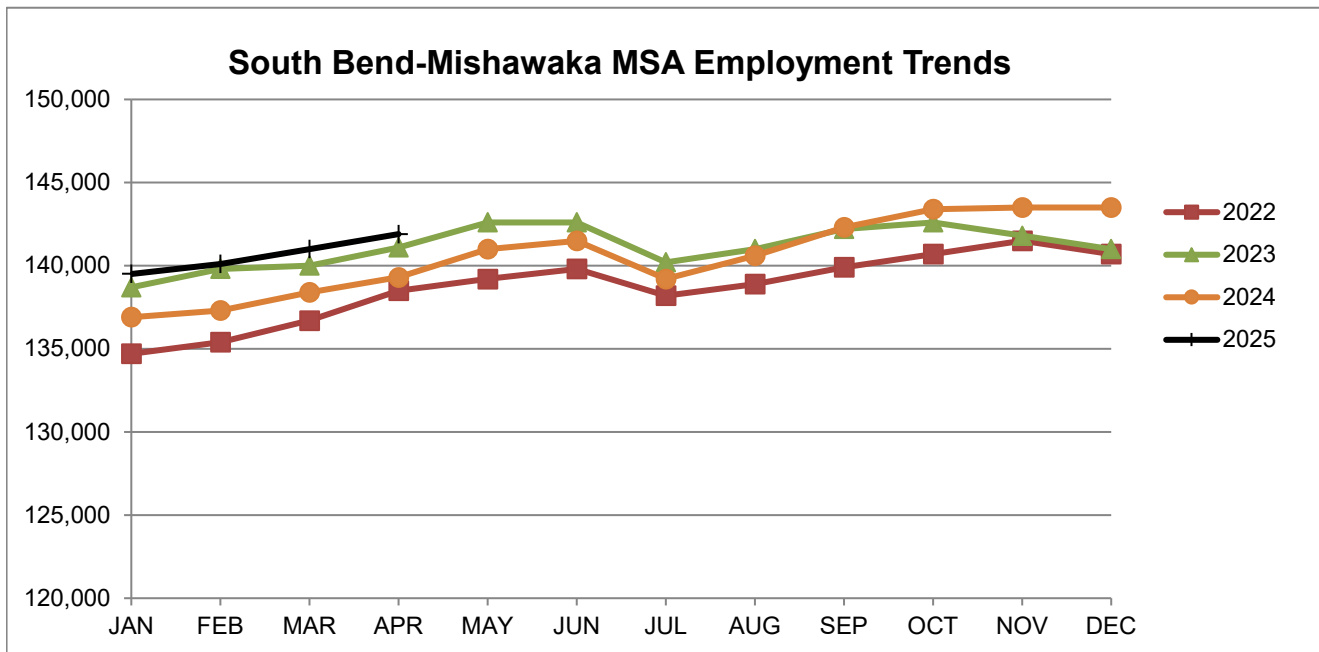
Source: Indiana Dept of Workforce Development, Research and Analysis, Current Employment Statistics



Source: Indiana Department of Workforce Development, Research & Analysis, Current Employment Statistics | Note: Historical data for the most recent 4 years (both seasonally adjusted and not seasonally adjusted) are revised near the beginning of each calendar year, prior to the release of January estimates for statewide data.

South Bend-Mishawaka MSA							
Wage and Salaried Employment	April 2025			# Change	% Change	# Change	% Change
Industry	Apr-25	Mar-25	Apr-24	Mar-25 to Apr-25		Apr-24 to Apr-25	
Total Nonfarm	141,900	141,000	139,300	900	0.6%	2,600	1.9%
Total Private	126,900	126,000	124,200	900	0.7%	2,700	2.2%
Goods Producing	21,600	21,400	21,200	200	0.9%	400	1.9%
Service Providing	120,300	119,600	118,100	700	0.6%	2,200	1.9%
Private Service Providing	105,300	104,600	103,000	700	0.7%	2,300	2.2%
Mining, Logging and Construction	6,400	6,200	6,100	200	3.2%	300	4.9%
Manufacturing	15,200	15,200	15,100	0	0.0%	100	0.7%
Trade, Transportation and Utilities	25,500	25,600	25,400	-100	-0.4%	100	0.4%
Wholesale Trade	7,000	7,100	6,700	-100	-1.4%	300	4.5%
Retail Trade	13,900	14,000	14,100	-100	-0.7%	-200	-1.4%
General Merchandise Stores	3,300	3,300	3,400	0	0.0%	-100	-2.9%
Transportation, Warehousing and Utilities	4,600	4,500	4,600	100	2.2%	0	0.0%
Information	1,400	1,400	1,400	0	0.0%	0	0.0%
Financial Activities	5,800	5,800	6,000	0	0.0%	-200	-3.3%
Professional & Business Services	13,100	12,900	12,900	200	1.6%	200	1.6%
Educational & Health Services	37,000	36,800	35,400	200	0.5%	1,600	4.5%
Hospitals	7,500	7,500	7,400	0	0.0%	100	1.4%
Leisure & Hospitality	15,600	15,200	15,200	400	2.6%	400	2.6%
Food Services and Drinking Places	11,200	10,900	11,300	300	2.8%	-100	-0.9%
Other Services	6,900	6,900	6,700	0	0.0%	200	3.0%
Total Government	15,000	15,000	15,100	0	0.0%	-100	-0.7%
Federal Government	900	900	900	0	0.0%	0	0.0%
State Government	2,600	2,500	2,600	100	4.0%	0	0.0%
Local Government	11,500	11,600	11,600	-100	-0.9%	-100	-0.9%
Local Government Educational Services	6,400	6,600	6,400	-200	-3.0%	0	0.0%

Source: Indiana Dept of Workforce Development, Research and Analysis, Current Employment Statistics



Source: Indiana Department of Workforce Development, Research & Analysis, Current Employment Statistics | Note: Historical data for the most recent 4 years (both seasonally adjusted and not seasonally adjusted) are revised near the beginning of each calendar year, prior to the release of January estimates for statewide data.

Frequently Listed Jobs	
Top 20 job listings by number of openings in Region 2 in the past month	
Rank	Occupations
1	Farmworkers and Laborers, Crop, Nursery, and Greenhouse
2	Production Workers, All Other
3	Cooks, Restaurant
4	Tellers
5	Hospitalists
6	Plating Machine Setters, Operators, and Tenders, Metal and Plastic
7	Maintenance and Repair Workers, General
8	Business Operations Specialists, All Other
9	First-Line Supervisors of Office and Administrative Support Workers
10	Heavy and Tractor-Trailer Truck Drivers
11	Helpers--Production Workers
12	Loan Officers
13	Mechanical Engineering Technologists and Technicians
14	Office and Administrative Support Workers, All Other
15	Transportation Workers, All Other
16	Bill and Account Collectors
17	Business Intelligence Analysts
18	Computer Occupations, All Other
19	Credit Analysts
20	Customer Service Representatives

Source: Indiana Workforce Development, Indiana Career Connect

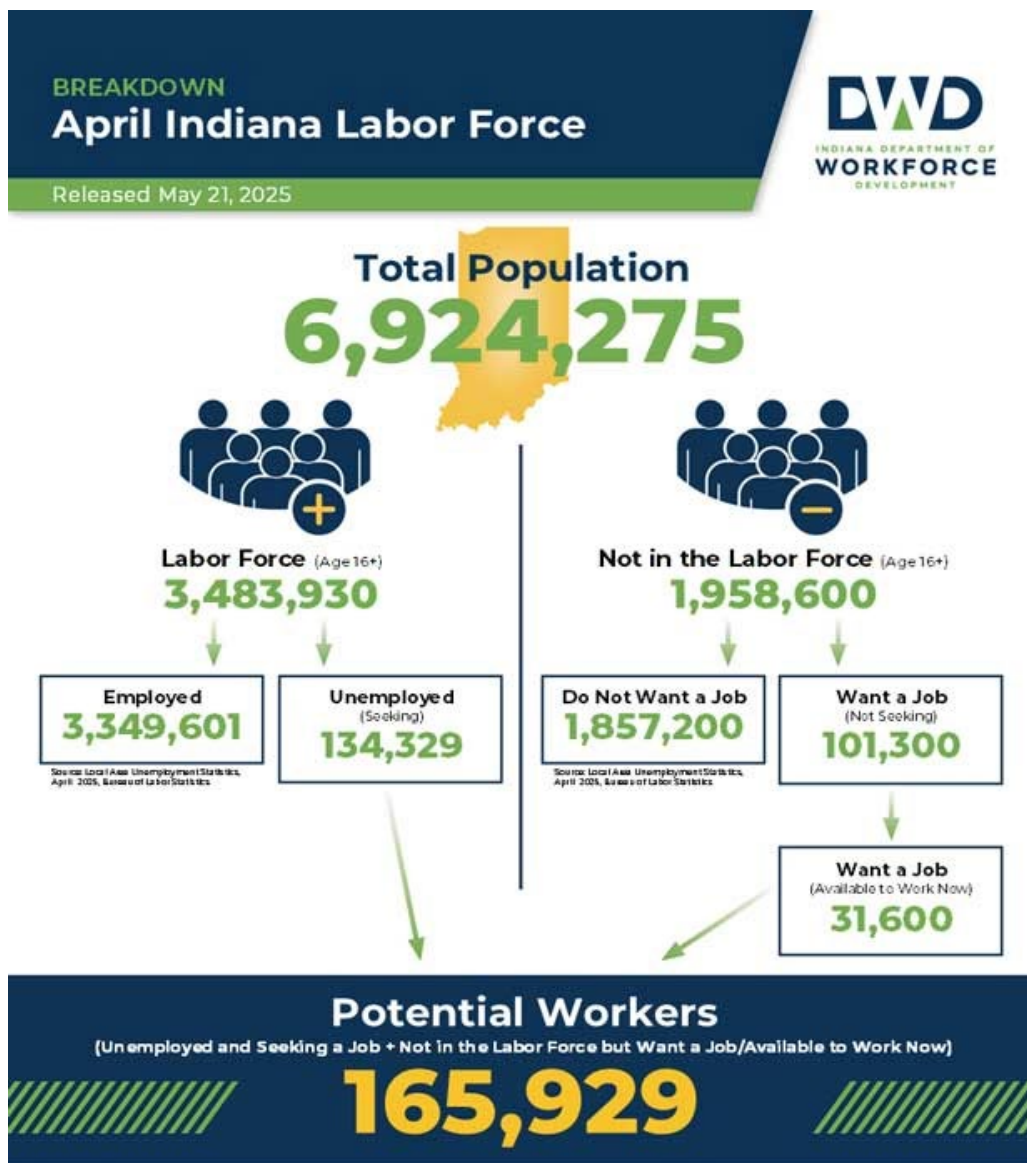
* Due to an upgrade in the reporting system, there is a notable change in Job Postings recorded. The tool used to measure Job Postings was upgraded to prevent malicious or false postings. While customers adjust to the enhancements a drop in the record is to be expected.

Applicant Pool	
Top 20 occupations desired by applicants on their resumes in the past 12 months	
Occupations	# of applicants
Production Workers, All Other	1,799
Assemblers and Fabricators, All Other	1,120
Helpers--Production Workers	831
Laborers and Freight, Stock, and Material Movers, Hand	446
Customer Service Representatives	432
Cashiers	400
Office Clerks, General	312
First-Line Supervisors of Production and Operating Workers	283
Team Assemblers	263
Shipping, Receiving, and Traffic Clerks	246
Heavy and Tractor-Trailer Truck Drivers	246
Welders, Cutters, Solderers, and Brazers	235
Office and Administrative Support Workers, All Other	233
Industrial Truck and Tractor Operators	221
Packers and Packagers, Hand	218
Inspectors, Testers, Sorters, Samplers, and Weighers	218
Retail Salespersons	203
Managers, All Other	188
Receptionists and Information Clerks	164
Machinists	153

Source: Indiana Workforce Development, Indiana Career Connect

Industry	Average Earnings (per hour)	Average # of hours worked (weekly)	Average Earnings (per week)
Construction	\$35.02	38.2	\$1,337.76
Manufacturing	\$26.25	42.6	\$1,118.25
Durable Goods	\$27.24	44.5	\$1,212.18
Fabricated Metal Product Manufacturing	\$26.18	43.2	\$1,130.98
Transportation Equipment Manufacturing	\$28.67	44.4	\$1,272.95
Non-Durable Goods	\$23.40	37.8	\$884.52
Retail Trade	\$21.02	28.3	\$594.87
Financial Activities	\$28.61	38.0	\$1,087.18
Health Care and Social Assistance	\$30.65	32.6	\$999.19
Accommodation and Food Services	\$16.77	23.2	\$389.06
Food Services and Drinking Places	\$16.24	23.2	\$376.77

Source: Indiana Department of Workforce Development, Current Employment Statistics



More about the U.S. Bureau of Labor Statistics data sources used within
 Local Area Unemployment Statistics (LAUS): Captures Indiana's labor force which includes those currently employed and those who are unemployed and actively seeking work.
 Current Population Survey (CPS): Captures individuals in Indiana's labor force. This part includes non-participants that do not want a job (i.e. retirees and students) and those that want a job but are not actively seeking work.
 U.S. Census Bureau's Indiana Population 2024.

Resource Notes on Using Current Population Survey (CPS) Subnational Data and Differences Between CPS and LAUS Estimates

County Unemployment Rates April 2025



INDIANA DEPARTMENT OF
WORKFORCE
DEVELOPMENT

Questions?

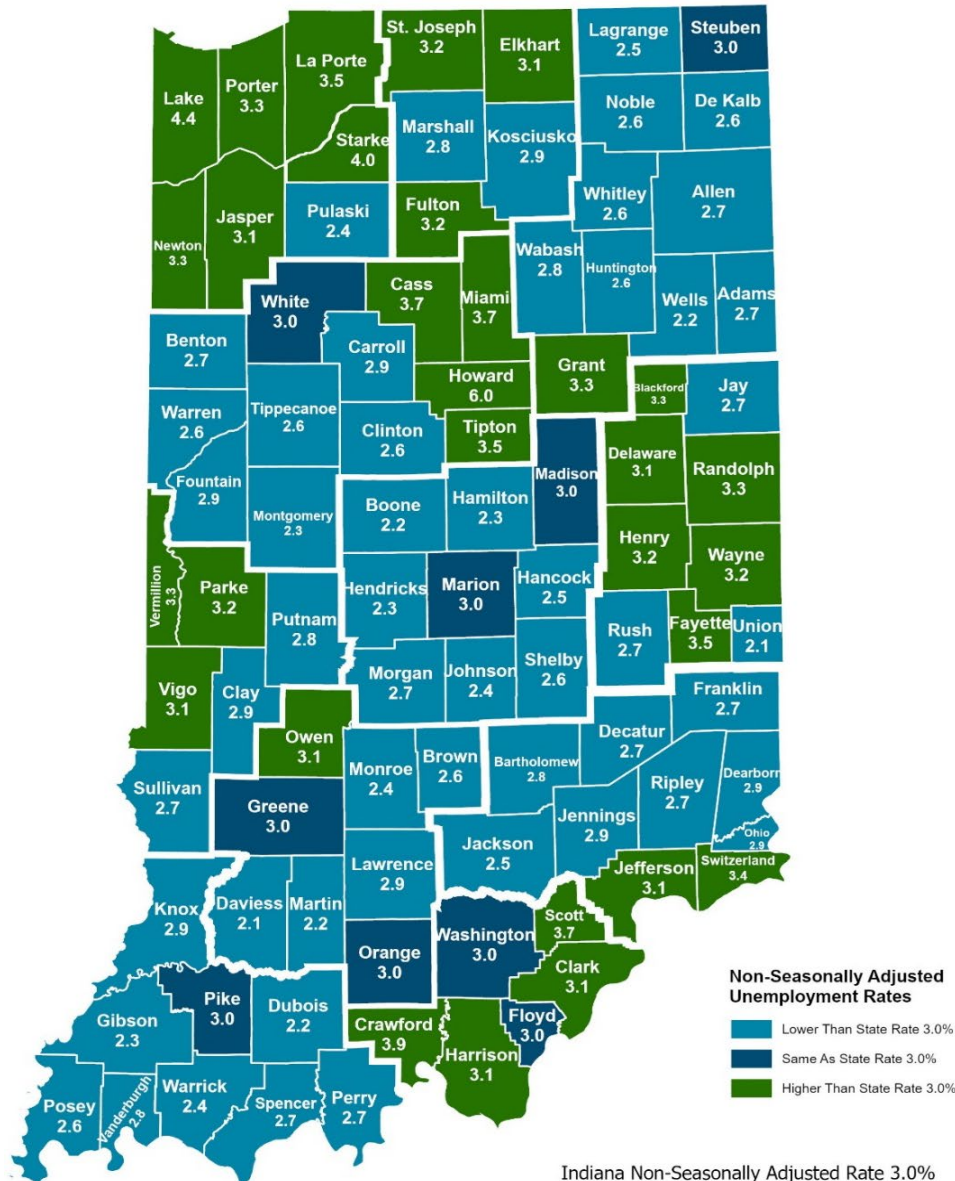
Please contact the DWD
Research and Analysis
Regional Labor Analyst
listed below:

Kathy Jaworski
Regional Labor Analyst
Research and Analysis

[Indiana Department of
Workforce Development](https://www.in.gov/dwd/)

219-841-6347

kjaworski@dwd.in.gov



Indiana Non-Seasonally Adjusted Rate 3.0%
Indiana Seasonally Adjusted Rate 3.9%
Source: DWD, Local Area Unemployment Statistics