



# HOOSIERS BY THE NUMBERS

Your premier source for labor market information for Indiana.



INDIANA DEPARTMENT OF  
**WORKFORCE**  
DEVELOPMENT

## LABOR MARKET REVIEW



## October 2024 Labor Market Review

Reported by: Alex Corn, MPA

Senior Regional Workforce Analyst

[Email Alex](#)

[dcorn@dwd.in.gov](mailto:dcorn@dwd.in.gov)



INDIANA DEPARTMENT OF  
**WORKFORCE**  
DEVELOPMENT

## LABOR MARKET REVIEW

# Economic Growth Region 12

Statistical Data Report for October 2024, Released December 2024

### State Employment and Unemployment

Unemployment rates were lower in October in 3 states, higher in 1 state, and stable in 46 states and the District of Columbia, the U.S. Bureau of Labor Statistics reported. Twenty-four states and the District had jobless rate increases from a year earlier, 6 states had decreases, and 20 states had little change. The national unemployment rate was unchanged over the month at 4.1 percent but was 0.3 percentage point higher than in October 2023.

Nonfarm payroll employment decreased in 2 states and was essentially unchanged in 48 states and the District of Columbia in October 2024.

Over the year, nonfarm payroll employment increased in 27 states and was essentially unchanged in 23 states and the District.



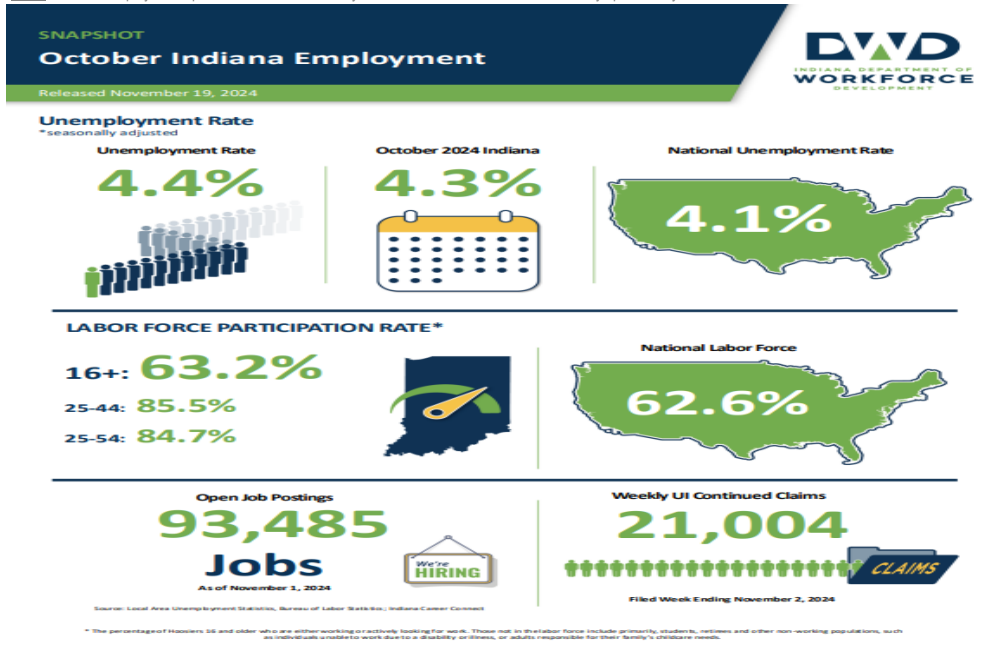
### Economic Growth Region (EGR) 12

Marion County

October 2024 Labor Force Estimates (not seasonally adjusted)						
Area	Labor Force	Employed	Unemployed	Oct-24	Sep-24	Oct-23
U.S.	168,569,000	161,938,000	6,631,000	3.9%	3.9%	3.6%
IN	3,460,202	3,322,315	137,887	4.0%	4.3%	3.1%
EGR 5	1,130,977	1,090,303	40,674	3.6%	3.9%	2.9%
Indy-Carmel MSA	1,156,635	1,115,007	41,628	3.6%	3.9%	2.9%
Marion Co.	527,547	506,925	20,622	3.9%	4.3%	3.1%
Indianapolis (cons.)	483,353	464,355	18,998	3.9%	4.4%	3.1%

Source: Indiana Department of Workforce Development, Research & Analysis, Local Area Unemployment Statistics | Unemployment Statistics Released:11/24

Notes: The data displayed are presented as estimates only. The most recent month's data are always preliminary and are revised when the next month's data are released.



### Unemployment Rates by State (seasonally adjusted): October 2024

U.S. - 4.1%

Illinois - 5.3%

Indiana - 4.4%

Kentucky - 5%

Michigan - 4.7%

Ohio - 4.3%

Source: U.S. Department of Labor, Bureau of Labor Statistics

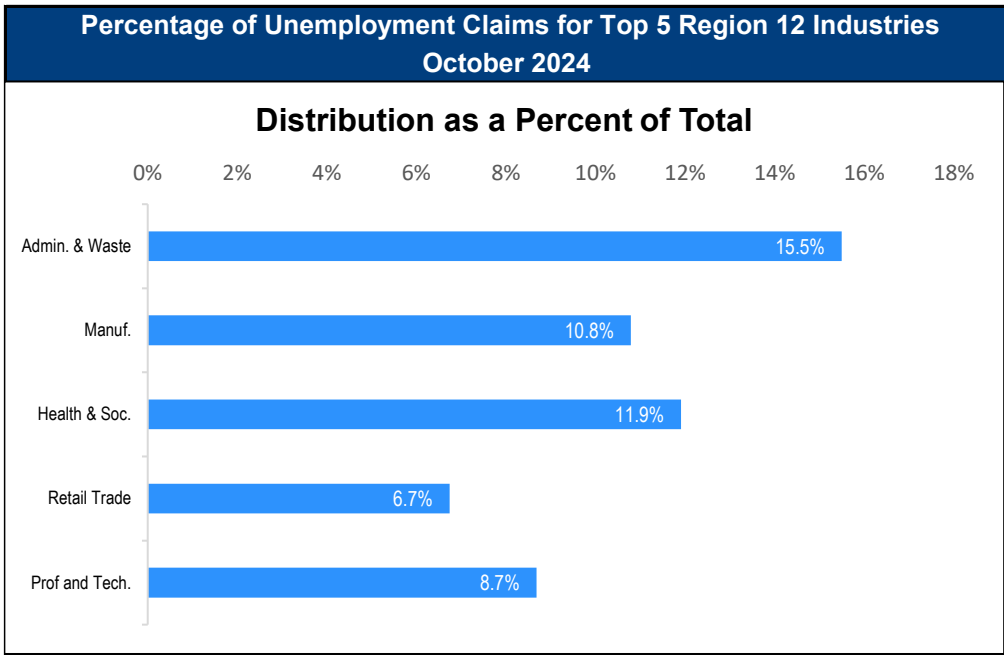
### Unemployment Rank by County (of 92 counties): October 2024

#42 - Marion (3.9%)

Source: Indiana Department of Workforce Development, Research and Development, Local Area Unemployment Statistics

Consumer Price Index (CPI-U Change), Unadjusted Percent Change to October 2024 from				
CPI Item	Oct-23	Sep-24	Oct-23	Sep-24
	U.S. City		Midwest Region*	
<b>All Items</b>	<b>2.6%</b>	<b>0.1%</b>	<b>2.6%</b>	<b>0.1%</b>
Food & Beverages	2.1%	0.2%	2.0%	0.1%
Housing	4.2%	0.2%	4.6%	-0.1%
Apparel	0.3%	-1.7%	2.6%	-0.3%
Transportation	-0.1%	0.0%	-0.7%	-0.3%
Medical Care	3.3%	0.3%	1.9%	0.2%
Recreation	1.0%	0.3%	1.0%	0.4%
Education & Communication	0.8%	-0.3%	-0.1%	-0.6%
Other Goods & Services	3.3%	0.4%	5.3%	-0.1%

\*Midwest region = Midwest Urban Average. Midwest Region includes Illinois, Indiana, Iowa, Kansas, Michigan, Minnesota, Missouri, Nebraska, North Dakota, Ohio, South Dakota and Wisconsin | Source: U.S. Bureau of Labor Statistics



Source: Indiana Department of Workforce Development, Research and Analysis

## WARN Notices

WARN Notices for Region 12 for October 2024				
Company	City	County	# of workers affected	Notice Date

**There are no WARN Notices for October 2024 for Region 12**

Source: Indiana Department of Workforce Development, WARN Notices | For information on WARN Act requirements, you may go to the U.S. Department of Labor Employment Training Administration Fact Sheet:

<https://www.doleta.gov/programs/factsht/warn.htm>

## Unemployment Claims: October 2024

### Region 12

#### Initial Claims

10/05/24 - 467

10/12/24 - 553

10/19/24 - 507

10/26/24 - 417

#### Continued Claims

10/05/24 - 3,210

10/12/24 - 3,216

10/19/24 - 3,160

10/26/24 - 3,080

#### Total Claims

10/05/24 - 3,677

10/12/24 - 3,769

10/19/24 - 3,667

10/26/24 - 3,497

### State of Indiana

#### Initial Claims

10/05/24 - 5,910

10/12/24 - 3,737

10/19/24 - 3,082

10/26/24 - 3,152

#### Continued Claims

10/05/24 - 20,932

10/12/24 - 20,745

10/19/24 - 21,386

10/26/24 - 20,802

#### Total Claims

10/05/24 - 26,842

10/12/24 - 24,482

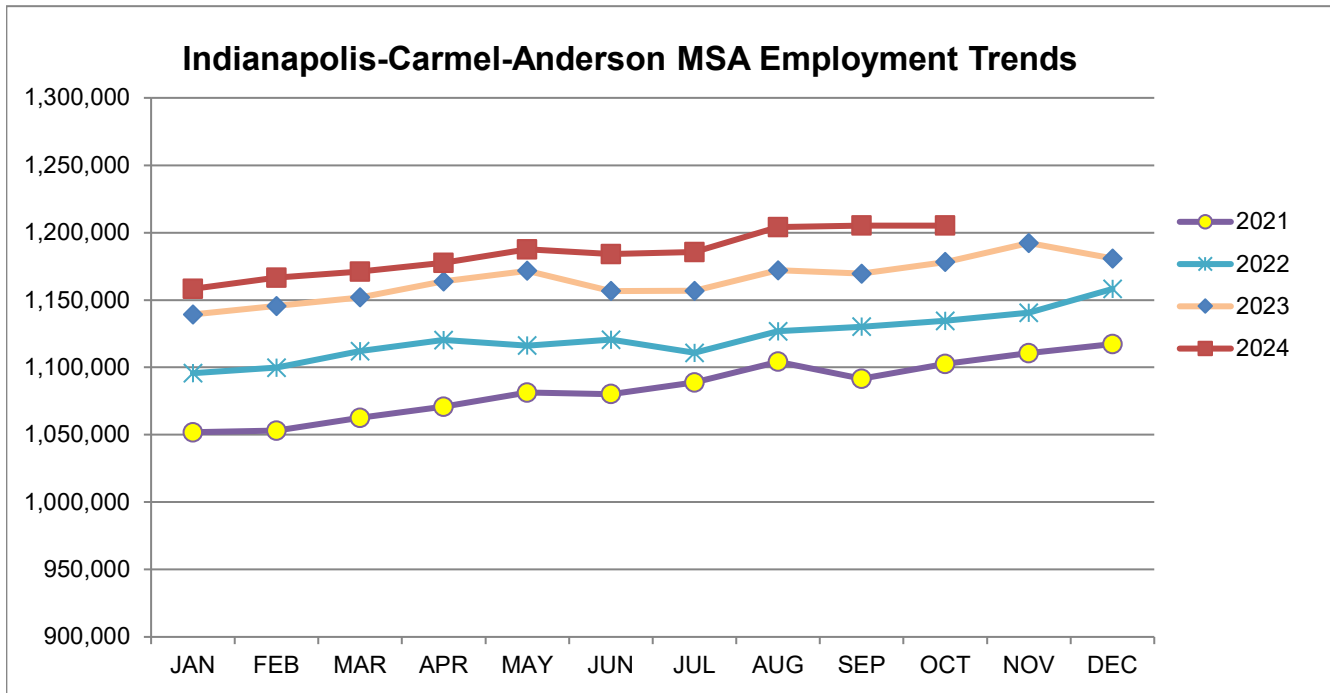
10/19/24 - 24,468

10/26/24 - 23,954

(D) indicates item is affected by non-disclosure issues relating to industry or ownership status | \*Numbers subject to weekly revision | Source: Indiana Department of Workforce Development, Research and Development

Indianapolis-Carmel-Anderson MSA							
Wage and Salaried Employment	October 2024			# Change	% Change	# Change	% Change
Industry	Oct-24	Sep-24	Oct-23	Sep-24 to Oct-24		Oct-23 to Oct-24	
<b>Total Nonfarm</b>	<b>1,205,200</b>	<b>1,205,200</b>	<b>1,178,200</b>	<b>2,000</b>	<b>0.2%</b>	<b>27,000</b>	<b>2.3%</b>
<b>Total Private</b>	<b>1,058,900</b>	<b>1,057,400</b>	<b>1,034,000</b>	<b>1,500</b>	<b>0.1%</b>	<b>24,900</b>	<b>2.4%</b>
Goods Producing	168,100	169,300	163,400	-1,200	-0.7%	4,700	2.9%
Service-Providing	1,037,100	1,033,900	1,014,800	3,200	0.3%	22,300	2.2%
Private Service Providing	890,800	888,100	870,600	2,700	0.3%	20,200	2.3%
Mining and Logging	800	800	800	0	0.0%	0	0.0%
Mining, Logging and Construction	68,500	69,100	64,900	-600	-0.9%	3,600	5.6%
Construction	67,700	68,300	64,100	-600	-0.9%	3,600	5.6%
Specialty Trade Contractors	41,400	41,700	39,800	-300	-0.7%	1,600	4.0%
Manufacturing	99,600	100,200	98,500	-600	-0.6%	1,100	1.1%
Durable Goods	53,400	53,800	52,800	-400	-0.7%	600	1.1%
Transportation Equipment Manufacturing	14,900	15,000	14,800	-100	-0.7%	100	0.7%
Motor Vehicle Parts Manufacturing	9,900	10,000	9,900	-100	-1.0%	0	0.0%
Non-Durable Goods	46,200	46,400	45,700	-200	-0.4%	500	1.1%
Chemical Manufacturing	20,300	20,400	19,500	-100	-0.5%	800	4.1%
Trade, Transportation, and Utilities	248,900	246,900	249,100	2,000	0.8%	-200	-0.1%
Wholesale Trade	55,600	55,600	55,700	0	0.0%	-100	-0.2%
Merchant Wholesalers, Durable Goods	36,900	36,800	36,200	100	0.3%	700	1.9%
Retail Trade	100,300	99,000	100,100	1,300	1.3%	200	0.2%
General Merchandise Stores	24,800	24,300	24,400	500	2.1%	400	1.6%
Department Stores	4,700	4,400	4,500	300	6.8%	200	4.4%
Other General Merchandise Stores	20,100	19,900	19,900	200	1.0%	200	1.0%
Transportation, Warehousing, and Utilities	93,000	92,300	93,300	700	0.8%	-300	-0.3%
Transportation and Warehousing	89,800	89,100	90,000	700	0.8%	-200	-0.2%
Information	11,700	11,700	12,100	0	0.0%	-400	-3.3%
Telecommunications	2,800	2,800	2,900	0	0.0%	-100	-3.5%
Financial Activities	77,900	77,800	75,000	100	0.1%	2,900	3.9%
Finance and Insurance	58,600	58,500	57,600	100	0.2%	1,000	1.7%
Insurance Carriers and Related Activities	37,300	37,100	36,200	200	0.5%	1,100	3.0%
Insurance Carriers	20,500	20,500	20,100	0	0.0%	400	2.0%
Professional and Business Services	192,300	192,300	189,600	0	0.0%	2,700	1.4%
Professional, Scientific, and Technical Services	84,300	83,600	81,200	700	0.8%	3,100	3.8%
Management of Companies and Enterprises	15,200	15,200	14,700	0	0.0%	500	3.4%
Administrative and Support and Waste Management and Remediation Services	92,800	93,500	93,700	-700	-0.8%	-900	-1.0%
Administrative and Support Services	89,300	90,100	89,200	-800	-0.9%	100	0.1%
Employment Services	45,700	45,600	45,800	100	0.2%	-100	-0.2%
Education and Health Services	194,400	194,300	188,300	100	0.1%	6,100	3.2%
Educational Services	25,900	25,400	23,600	500	2.0%	2,300	9.8%
Health Care and Social Assistance	168,500	168,900	164,700	-400	-0.2%	3,800	2.3%
Ambulatory Health Care Services	74,600	74,400	71,900	200	0.3%	2,700	3.8%
Hospitals	46,700	46,800	45,500	-100	-0.2%	1,200	2.6%
Leisure and Hospitality	120,000	119,200	111,700	800	0.7%	8,300	7.4%
Accommodation and Food Services	96,000	96,100	92,400	-100	-0.1%	3,600	3.9%
Food Services and Drinking Places	86,800	86,900	84,500	-100	-0.1%	2,300	2.7%
Restaurants and Other Eating Places	77,600	77,800	75,700	-200	-0.3%	1,900	2.5%
Full-service restaurants	37,100	37,200	36,200	-100	-0.3%	900	2.5%
Limited-Service Restaurants and Other Eating Places	40,500	40,600	39,500	-100	-0.3%	1,000	2.5%
Other Services	45,600	45,900	44,800	-300	-0.7%	800	1.8%
<b>Total Government</b>	<b>146,300</b>	<b>145,800</b>	<b>144,200</b>	<b>500</b>	<b>0.3%</b>	<b>2,100</b>	<b>1.5%</b>
Federal Government	18,900	19,400	18,800	-500	-2.6%	100	0.5%
State Government	37,300	35,900	36,700	1,400	3.9%	600	1.6%
Local Government	90,100	90,500	88,700	-400	-0.4%	1,400	1.6%
Local Government Educational Services	45,600	46,200	44,400	-600	-1.3%	1,200	2.7%

Source: Indiana Dept of Workforce Development, Research and Analysis, Current Employment Statistics



Source: Indiana Department of Workforce Development, Research & Analysis, Current Employment Statistics | Note: Historical data for the most recent 4 years (both seasonally adjusted and not seasonally adjusted) are revised near the beginning of each calendar year, prior to the release of January estimates for statewide data.

Frequently Listed Jobs	
Top 20 job listings by number of openings in Region 12 in the past month	
Rank	Occupations
1	Helpers--Production Workers
2	Landscaping and Groundskeeping Workers
3	Registered Nurses
4	Nursing Assistants
5	Preschool Teachers, Except Special Education
6	Licensed Practical and Licensed Vocational Nurses
7	Industrial Engineering Technologists and Technicians
8	Payroll and Timekeeping Clerks
9	Medical and Health Services Managers
10	Cement Masons and Concrete Finishers
11	Managers, All Other
12	Production Workers, All Other
13	Cooks, All Other
14	Medical Assistants
15	Business Operations Specialists, All Other
16	Physical Therapists
17	Heavy and Tractor-Trailer Truck Drivers
18	Occupational Therapy Assistants
19	Engineers, All Other
20	Speech-Language Pathologists

Source: Indiana Workforce Development, Indiana Career Connect. \* Due to an upgrade in the reporting system, there is a notable change in Job Postings recorded. The tool used to measure Job Postings was upgraded to prevent malicious or false postings. While customers adjust to the enhancements a drop in the record is to be expected.

Applicant Pool	
Top 20 occupations desired by applicants on their resumes in the past 12 months	
Occupations	# of applicants
Customer Service Representatives	1,482
Laborers and Freight, Stock, and Material Movers, Hand	838
Production Workers, All Other	727
Cashiers	626
Cashiers	596
Helpers--Production Workers	473
Heavy and Tractor-Trailer Truck Drivers	440
Packers and Packagers, Hand	398
Office Clerks, General	381
Industrial Truck and Tractor Operators	347
Managers, All Other	325
Office and Administrative Support Workers, All Other	307
Retail Salespersons	281
Executive Secretaries and Executive Administrative Assistants	253
Receptionists and Information Clerks	250
Data Entry Keyers	250
Shipping, Receiving, and Traffic Clerks	247
Janitors and Cleaners, Except Maids and Housekeeping Cleaners	215
Medical Assistants	197
Material Moving Workers, All Other	188

Source: Indiana Workforce Development, Indiana Career Connect

**BREAKDOWN**

# September Indiana Labor Force

Released October 22, 2024



## Total Population

# 6,862,199



**Labor Force (Age 16+)**  
**3,417,810**



**Not in the Labor Force (Age 16+)**  
**2,008,800**

**Employed**  
**3,269,974**

Source: Local Area Unemployment Statistics, September 2024, Bureau of Labor Statistics

**Unemployed [Seeking]**  
**147,836**

**Do Not Want a Job**  
**1,895,200**

Source: Local Area Unemployment Statistics, September 2024, Bureau of Labor Statistics

**Want a Job [Not Seeking]**  
**113,600**

**Want a Job [Available to Work Now]**  
**35,500**

## Potential Workers

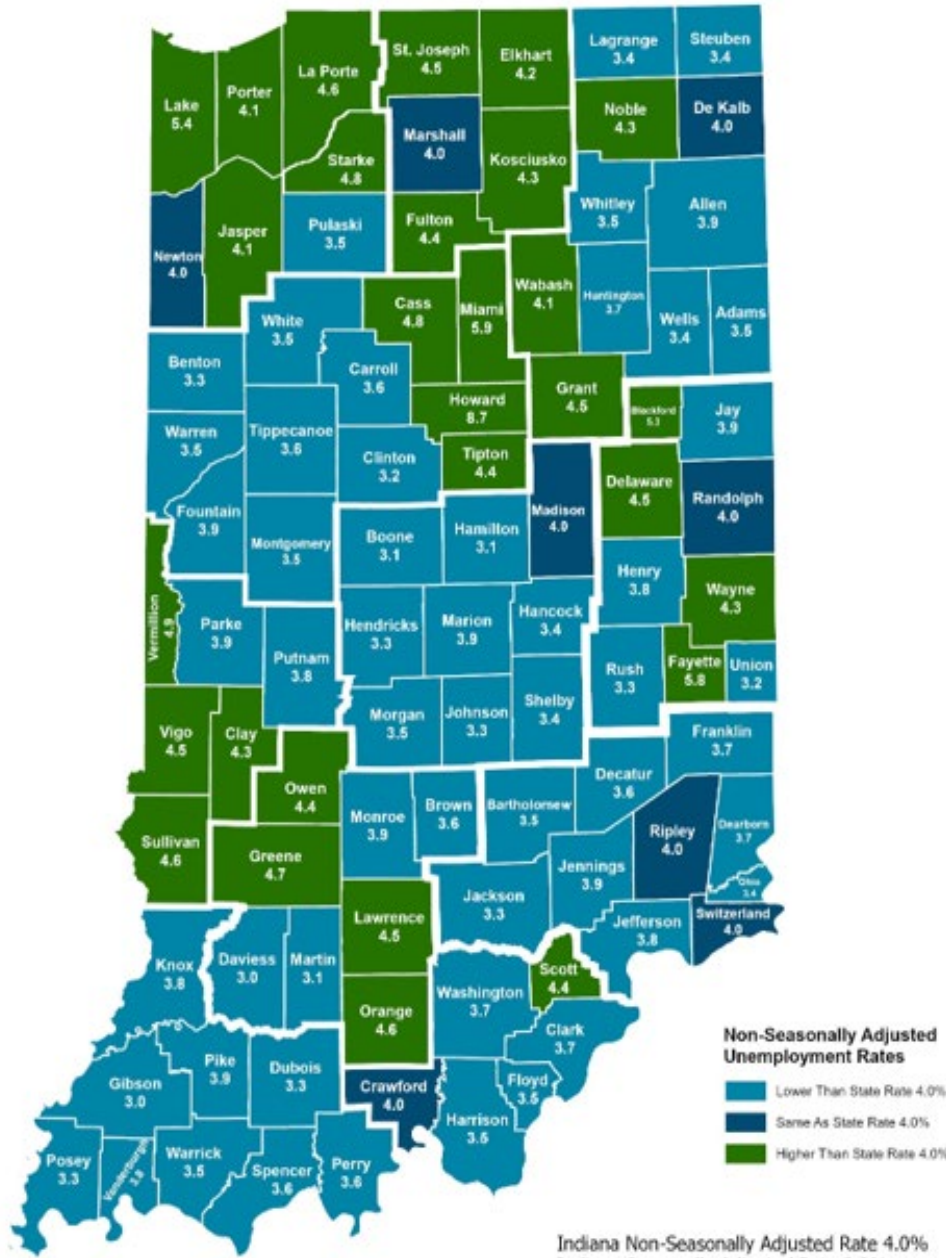
(Unemployed and Seeking a Job + Not in the Labor Force but Want a Job/Available to Work Now)

# 183,336

More about the US Bureau of Labor Statistics data sources used within:  
Local Area Unemployment Statistics (LAUS): Captures Indiana's labor force, which includes those currently employed and those who are unemployed and actively seeking work.  
Current Population Survey (CPS): Captures individuals not participating in Indiana's Labor Force. This set includes non-participants that do not want a job (i.e. retirees and students) and those that want a job, but are not actively seeking work.  
U.S. Census Bureau, Indiana Population 2023.

Resource: Notes on Using Current Population Survey (CPS) Subnational Data and Differences Between CPS and LAUS Estimates

# County Unemployment Rates October 2024 - Non Seasonally Adjusted



**Non-Seasonally Adjusted Unemployment Rates**

- Lower Than State Rate 4.0%
- Same As State Rate 4.0%
- Higher Than State Rate 4.0%

Indiana Non-Seasonally Adjusted Rate 4.0%  
 Indiana Seasonally Adjusted Rate 3.9%  
 Source: DWD, Local Area Unemployment Statistics

## Questions?

Please contact the DWD Research and Analysis Regional Labor Analyst listed below:

**Alex Corn, MPA**  
 Senior Regional Labor Analyst  
 Research and Analysis

[Indiana Department of Workforce Development](https://www.in.gov/dwd/)  
[dcorn@dwd.in.gov](mailto:dcorn@dwd.in.gov)