



HOOSIERS BY THE NUMBERS

Your premier source for labor market information for Indiana.



LABOR MARKET REVIEW



**April 2024
Labor Market Review**

Reported by: Mike Petro

Regional Workforce Analyst

[Email Mike](#)

gpetro@dwd.in.gov



LABOR MARKET REVIEW

Economic Growth Region 12

Statistical Data Report for April 2024, Released June 2024

State Employment and Unemployment

STATE EMPLOYMENT AND UNEMPLOYMENT -- APRIL 2024

Unemployment rates were lower in April in 5 states, higher in 2 states, and stable in 43 states and the District of Columbia, the U.S. Bureau of Labor Statistics reported. Thirty states had jobless rate increases from a year earlier, 1 state had a decrease, and 19 states and the District had little change. The national unemployment rate changed little at 3.9 percent but was 0.5 percentage point higher than in April 2023. Nonfarm payroll employment increased in 6 states and was essentially unchanged in 44 states and the District of Columbia in April 2024. Over the year, nonfarm payroll employment increased in 31 states and was essentially unchanged in 19 states and the District.

Source: Bureau of Labor Statistics



Economic Growth Region (EGR) 12

Marion County

| April 2024 Labor Force Estimates (not seasonally adjusted) | | | | | | |
|--|-------------|-------------|------------|--------|--------|--------|
| Area | Labor Force | Employed | Unemployed | Apr-24 | Mar-24 | Apr-23 |
| U.S. | 167,484,000 | 161,590,000 | 5,894,000 | 3.5% | 3.9% | 3.1% |
| IN | 3,383,458 | 3,267,750 | 115,708 | 3.4% | 4.1% | 2.7% |
| EGR 12 | 515,253 | 497,605 | 17,648 | 3.4% | 4.0% | 2.7% |
| Indy-Carmel MSA | 1,128,097 | 1,093,095 | 35,002 | 3.1% | 3.7% | 2.5% |
| Marion Co. | 515,253 | 497,605 | 17,648 | 3.4% | 4.0% | 2.7% |
| Indianapolis (cons.) | 472,115 | 455,818 | 16,297 | 3.5% | 4.0% | 2.8% |

Source: Indiana Department of Workforce Development, Research & Analysis, Local Area Unemployment Statistics | Unemployment Statistics Released:05/24

Notes: The data displayed are presented as estimates only. The most recent month's data are always preliminary and are revised when the next month's data are released.

Unemployment Rates by State (seasonally adjusted): April 2024

U.S. - 3.9%

Illinois - 4.8%

Indiana - 3.6%

Kentucky - 4.6%

Michigan - 3.9%

Ohio - 4%

Source: U.S. Department of Labor, Bureau of Labor Statistics

Unemployment Rank by County (of 92 counties): April 2024

#37 - Marion (3.4%)

Source: Indiana Department of Workforce Development, Research and Development, Local Area Unemployment Statistics

SNAPSHOT
April Indiana Employment
Released May 17, 2024

Unemployment Rate
*seasonally adjusted

Unemployment Rate

3.6%

March 2024 Indiana

3.5%

National Unemployment Rate

3.9%

LABOR FORCE PARTICIPATION RATE*

16+: **62.5%**

25-44: **81.4%**

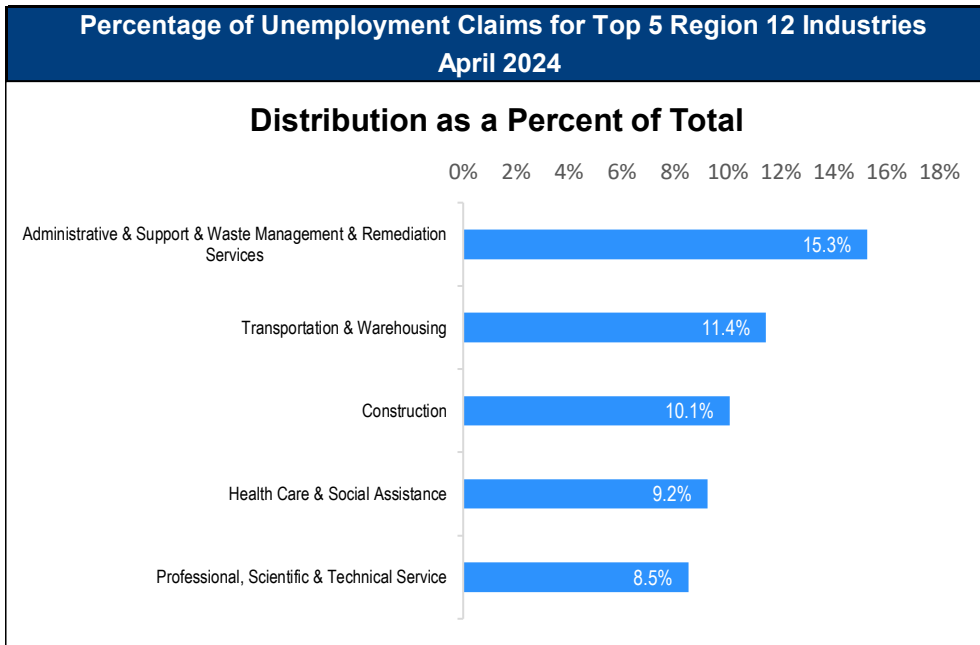
25-54: **81.0%**

National Labor Force

62.7%

| Consumer Price Index (CPI-U Change), Unadjusted Percent Change to April 2024 from | | | | |
|---|-------------|-------------|-----------------|-------------|
| CPI Item | Apr-23 | Mar-24 | Apr-23 | Mar-24 |
| | U.S. City | | Midwest Region* | |
| All Items | 3.4% | 0.4% | 2.8% | 0.5% |
| Food & Beverages | 2.2% | 0.2% | 2.1% | 0.1% |
| Housing | 4.5% | 0.1% | 4.4% | 0.5% |
| Apparel | 1.3% | -0.1% | 1.3% | 0.1% |
| Transportation | 3.5% | 1.5% | 1.0% | 0.8% |
| Medical Care | 2.6% | 0.3% | 2.1% | 1.1% |
| Recreation | 1.5% | 0.2% | 0.1% | -0.1% |
| Education & Communication | 0.4% | 0.1% | -0.2% | 0.2% |
| Other Goods & Services | 4.3% | 0.5% | 7.1% | 0.9% |

*Midwest region = Midwest Urban Average. Midwest Region includes Illinois, Indiana, Iowa, Kansas, Michigan, Minnesota, Missouri, Nebraska, North Dakota, Ohio, South Dakota and Wisconsin | Source: U.S. Bureau of Labor Statistics



Source: Indiana Department of Workforce Development, Research and Analysis

WARN Notices

| WARN Notices for Region 12 for April 2024 | | | | |
|---|--------------|--------|-----------------------|-------------|
| Company | City | County | # of workers affected | Notice Date |
| Gannett Publishing Services (Indy Star) | Indianapolis | Marion | 1 | 4/30/2024 |
| | | | | |
| | | | | |

**For the month of April, Region 12 had 1 WARN notices, affecting up to 1 people.
Please visit <https://www.in.gov/dwd/2567.htm> for details.**

Source: Indiana Department of Workforce Development, WARN Notices | For information on WARN Act requirements, you may go to the U.S. Department of Labor Employment Training Administration Fact Sheet:

<https://www.doleta.gov/programs/factsht/warn.htm>

Unemployment Claims: April 2024

Region 12

Initial Claims

04/06/24 - 371

04/13/24 - 463

04/20/24 - 378

04/27/24 - 371

Continued Claims

04/06/24 - 3,122

04/13/24 - 2,992

04/20/24 - 2,974

04/27/24 - 2,956

Total Claims

04/06/24 - 3,493

04/13/24 - 3,455

04/20/24 - 3,352

04/27/24 - 3,327

State of Indiana

Initial Claims

04/06/24 - 2,643

04/13/24 - 3,083

04/20/24 - 2,453

04/27/24 - 2,344

Continued Claims

04/06/24 - 23,195

04/13/24 - 21,745

04/20/24 - 20,331

04/27/24 - 19,795

Total Claims

04/06/24 - 25,838

04/13/24 - 24,828

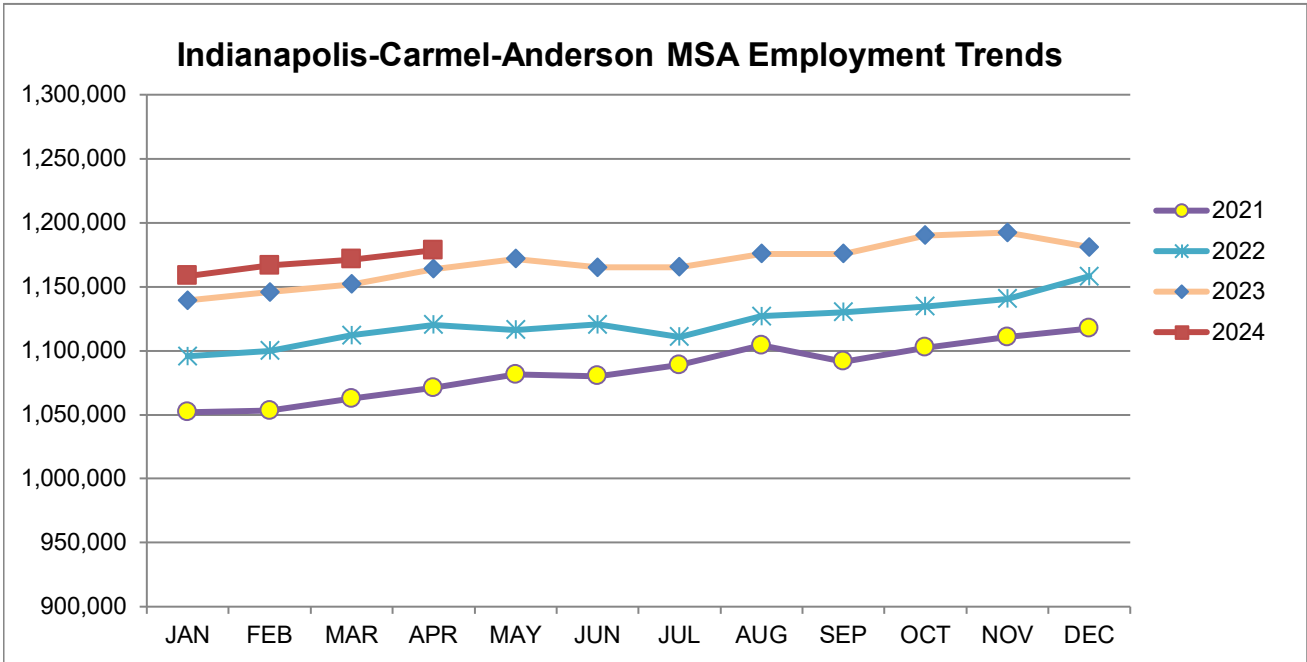
04/20/24 - 22,784

04/27/24 - 22,139

(D) indicates item is affected by non-disclosure issues relating to industry or ownership status | *Numbers subject to weekly revision | Source: Indiana Department of Workforce Development, Research and Development

| Indianapolis-Carmel-Anderson MSA | | | | | | | |
|--|------------------|------------------|------------------|------------------|------------------|------------------|------------------|
| Wage and Salaried Employment | April 2024 | | | # Change | % Change | # Change | % Change |
| Industry | Apr-24 | Mar-24 | Apr-23 | Mar-24 to Apr-24 | Apr-24 to Mar-24 | Apr-23 to Apr-24 | Apr-24 to Apr-23 |
| Total Nonfarm | 1,178,500 | 1,171,100 | 1,151,200 | 7,400 | 0.6% | 27,300 | 2.4% |
| Total Private | 1,032,700 | 1,025,400 | 1,009,400 | 7,300 | 0.7% | 23,300 | 2.3% |
| Goods Producing | 163,900 | 162,100 | 158,400 | 1,800 | 1.1% | 5,500 | 3.5% |
| Service-Providing | 1,014,600 | 1,009,000 | 992,800 | 5,600 | 0.6% | 21,800 | 2.2% |
| Private Service Providing | 868,800 | 863,300 | 851,000 | 5,500 | 0.6% | 17,800 | 2.1% |
| Mining and Logging | 800 | 800 | 700 | 0 | 0.0% | 100 | 14.3% |
| Mining, Logging and Construction | 64,900 | 64,100 | 61,200 | 800 | 1.3% | 3,700 | 6.1% |
| Construction | 64,100 | 63,300 | 60,500 | 800 | 1.3% | 3,600 | 6.0% |
| Specialty Trade Contractors | 40,000 | 39,600 | 37,900 | 400 | 1.0% | 2,100 | 5.5% |
| Manufacturing | 99,000 | 98,000 | 97,200 | 1,000 | 1.0% | 1,800 | 1.9% |
| Durable Goods | 53,400 | 52,600 | 52,400 | 800 | 1.5% | 1,000 | 1.9% |
| Transportation Equipment Manufacturing | 15,000 | 14,900 | 14,600 | 100 | 0.7% | 400 | 2.7% |
| Motor Vehicle Parts Manufacturing | 10,000 | 9,900 | 9,700 | 100 | 1.0% | 300 | 3.1% |
| Non-Durable Goods | 45,600 | 45,400 | 44,800 | 200 | 0.4% | 800 | 1.8% |
| Chemical Manufacturing | 19,700 | 19,700 | 19,000 | 0 | 0.0% | 700 | 3.7% |
| Trade, Transportation, and Utilities | 245,500 | 246,000 | 243,300 | -500 | -0.2% | 2,200 | 0.9% |
| Wholesale Trade | 56,100 | 56,400 | 55,400 | -300 | -0.5% | 700 | 1.3% |
| Merchant Wholesalers, Durable Goods | 36,400 | 36,700 | 35,700 | -300 | -0.8% | 700 | 2.0% |
| Retail Trade | 99,400 | 99,500 | 98,600 | -100 | -0.1% | 800 | 0.8% |
| General Merchandise Stores | 24,300 | 24,300 | 23,600 | 0 | 0.0% | 700 | 3.0% |
| Department Stores | 4,300 | 4,200 | 4,000 | 100 | 2.4% | 300 | 7.5% |
| Other General Merchandise Stores | 20,000 | 20,100 | 19,600 | -100 | -0.5% | 400 | 2.0% |
| Transportation, Warehousing, and Utilities | 90,000 | 90,100 | 89,300 | -100 | -0.1% | 700 | 0.8% |
| Transportation and Warehousing | 86,700 | 86,900 | 86,000 | -200 | -0.2% | 700 | 0.8% |
| Information | 11,900 | 12,000 | 12,500 | -100 | -0.8% | -600 | -4.8% |
| Telecommunications | 2,800 | 2,900 | 2,900 | -100 | -3.5% | -100 | -3.5% |
| Financial Activities | 74,600 | 74,500 | 74,900 | 100 | 0.1% | -300 | -0.4% |
| Finance and Insurance | 57,100 | 57,000 | 57,700 | 100 | 0.2% | -600 | -1.0% |
| Insurance Carriers and Related Activities | 36,100 | 36,000 | 36,100 | 100 | 0.3% | 0 | 0.0% |
| Insurance Carriers | 20,000 | 19,900 | 20,000 | 100 | 0.5% | 0 | 0.0% |
| Professional and Business Services | 185,900 | 184,200 | 186,700 | 1,700 | 0.9% | -800 | -0.4% |
| Professional, Scientific, and Technical Services | 81,500 | 80,000 | 82,000 | 1,500 | 1.9% | -500 | -0.6% |
| Management of Companies and Enterprises | 14,900 | 14,800 | 14,600 | 100 | 0.7% | 300 | 2.1% |
| Administrative and Support and Waste Management and Remediation Services | 89,500 | 89,400 | 90,100 | 100 | 0.1% | -600 | -0.7% |
| Administrative and Support Services | 85,600 | 85,400 | 85,500 | 200 | 0.2% | 100 | 0.1% |
| Employment Services | 42,800 | 42,700 | 43,300 | 100 | 0.2% | -500 | -1.2% |
| Education and Health Services | 191,500 | 190,700 | 179,600 | 800 | 0.4% | 11,900 | 6.6% |
| Educational Services | 24,300 | 23,700 | 23,400 | 600 | 2.5% | 900 | 3.9% |
| Health Care and Social Assistance | 167,200 | 167,000 | 156,200 | 200 | 0.1% | 11,000 | 7.0% |
| Ambulatory Health Care Services | 73,200 | 73,100 | 68,400 | 100 | 0.1% | 4,800 | 7.0% |
| Hospitals | 46,300 | 46,300 | 44,000 | 0 | 0.0% | 2,300 | 5.2% |
| Leisure and Hospitality | 113,900 | 109,700 | 109,700 | 4,200 | 3.8% | 4,200 | 3.8% |
| Accommodation and Food Services | 92,800 | 91,100 | 92,600 | 1,700 | 1.9% | 200 | 0.2% |
| Food Services and Drinking Places | 84,300 | 83,100 | 84,900 | 1,200 | 1.4% | -600 | -0.7% |
| Restaurants and Other Eating Places | 76,000 | 74,900 | 76,700 | 1,100 | 1.5% | -700 | -0.9% |
| Full-service restaurants | 36,300 | 35,800 | 36,500 | 500 | 1.4% | -200 | -0.6% |
| Limited-Service Restaurants and Other Eating Places | 39,700 | 39,100 | 40,200 | 600 | 1.5% | -500 | -1.2% |
| Other Services | 45,500 | 46,200 | 44,300 | -700 | -1.5% | 1,200 | 2.7% |
| Total Government | 145,800 | 145,700 | 141,800 | 100 | 0.1% | 4,000 | 2.8% |
| Federal Government | 18,900 | 19,100 | 18,300 | -200 | -1.1% | 600 | 3.3% |
| State Government | 36,900 | 36,600 | 36,300 | 300 | 0.8% | 600 | 1.7% |
| Local Government | 90,000 | 90,000 | 87,200 | 0 | 0.0% | 2,800 | 3.2% |
| Local Government Educational Services | 44,800 | 45,300 | 43,700 | -500 | -1.1% | 1,100 | 2.5% |

Source: Indiana Dept of Workforce Development, Research and Analysis, Current Employment Statistics



Source: Indiana Department of Workforce Development, Research & Analysis, Current Employment Statistics | Note: Historical data for the most recent 4 years (both seasonally adjusted and not seasonally adjusted) are revised near the beginning of each calendar year, prior to the release of January estimates for statewide data.

| Frequently Listed Jobs | |
|--|--|
| Top 20 job listings by number of openings in Region 12 in the past month | |
| Rank | Occupations |
| 1 | Registered Nurses |
| 2 | Stockers and Order Fillers |
| 3 | Accountants and Auditors |
| 4 | Sales Managers |
| 5 | Software Developers |
| 6 | Marketing Managers |
| 7 | Retail Salespersons |
| 8 | Construction Managers |
| 9 | Maintenance and Repair Workers, General |
| 10 | Computer User Support Specialists |
| 11 | Customer Service Representatives |
| 12 | Critical Care Nurses |
| 13 | General and Operations Managers |
| 14 | Civil Engineers |
| 15 | Sales Representatives, Wholesale and Manufacturing, Technical and Scientific Products |
| 16 | Management Analysts |
| 17 | Sales Representatives of Services, Except Advertising, Insurance, Financial Services, and Travel |
| 18 | Laborers and Freight, Stock, and Material Movers, Hand |
| 19 | Sales Representatives, Wholesale and Manufacturing, Except Technical and Scientific Products |
| 20 | Heavy and Tractor-Trailer Truck Drivers |

Source: Indiana Workforce Development, Indiana Career Connect

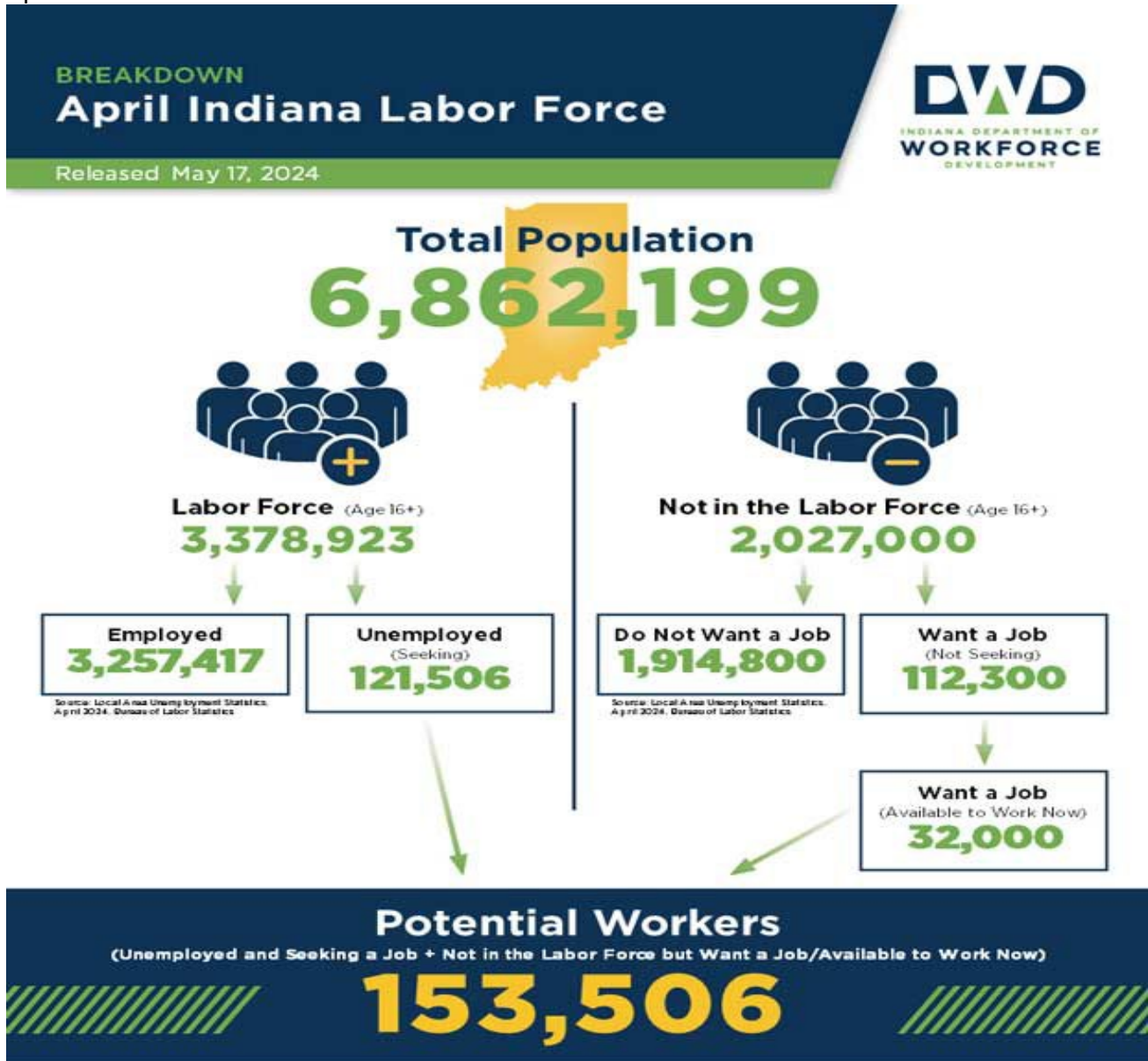
| Applicant Pool | |
|---|-----------------|
| Top 20 occupations desired by applicants on their resumes in the past 12 months | |
| Occupations | # of applicants |
| Customer Service Representatives | 1,725 |
| Laborers and Freight, Stock, and Material Movers, Hand | 951 |
| Production Workers, All Other | 859 |
| Cashiers | 766 |
| Assemblers and Fabricators, All Other | 713 |
| Helpers--Production Workers | 538 |
| Packers and Packagers, Hand | 473 |
| Heavy and Tractor-Trailer Truck Drivers | 458 |
| Office Clerks, General | 448 |
| Industrial Truck and Tractor Operators | 429 |
| Managers, All Other | 364 |
| Office and Administrative Support Workers, All Other | 360 |
| Retail Salespersons | 324 |
| Executive Secretaries and Executive Administrative Assistants | 298 |
| Data Entry Keyers | 295 |
| Receptionists and Information Clerks | 294 |
| Shipping, Receiving, and Traffic Clerks | 288 |
| Janitors and Cleaners, Except Maids and Housekeeping Cleaners | 258 |
| Medical Assistants | 228 |
| Material Moving Workers, All Other | 221 |

Source: Indiana Workforce Development, Indiana Career Connect

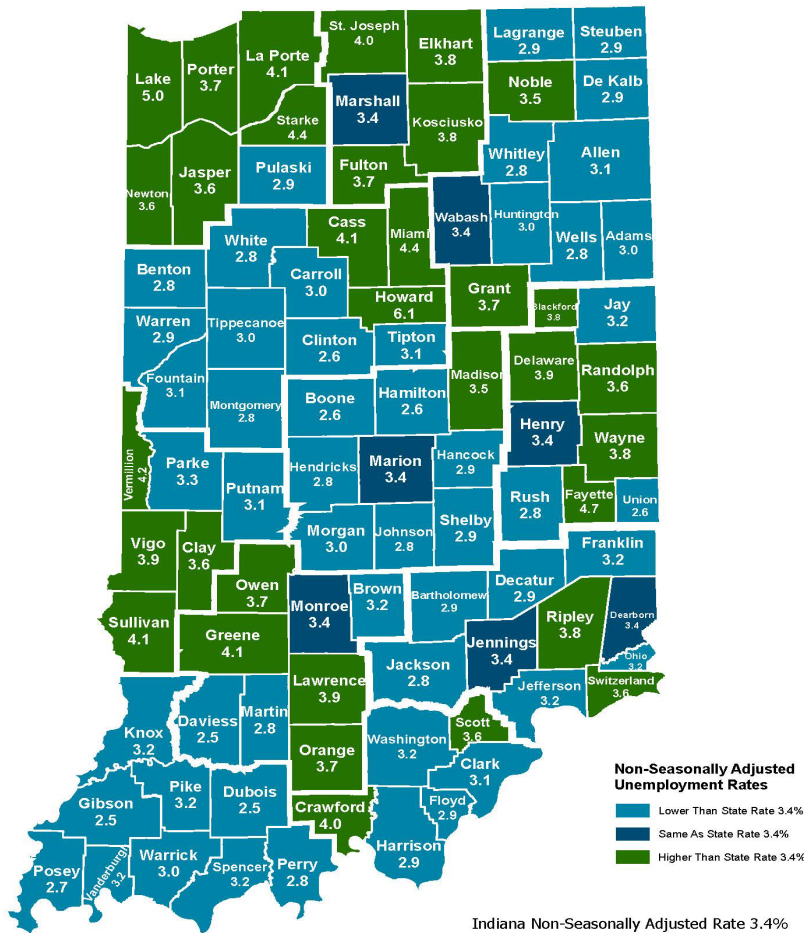
Real Earnings Summary

REAL EARNINGS – APRIL 2024

Real average hourly earnings for all employees decreased 0.2 percent from March to April, seasonally adjusted, the U.S. Bureau of Labor Statistics reported. This result stems from an increase of 0.2 percent in average hourly earnings combined with an increase of 0.3 percent in the Consumer Price Index for All Urban Consumers (CPI-U). Real average weekly earnings decreased 0.4 percent over the month due to the change in real average hourly earnings combined with a 0.3-percent decrease in the average workweek. Real average hourly earnings increased 0.5 percent, seasonally adjusted, from April 2023 to April 2024. The change in real average hourly earnings combined with no change in the average workweek resulted in a 0.5-percent increase in real average weekly earnings over this period. Source: U.S. Bureau of Labor Statistics



County Unemployment Rates April 2024



**Non-Seasonally Adjusted
Unemployment Rates**

- Lower Than State Rate 3.4%
- Same As State Rate 3.4%
- Higher Than State Rate 3.4%

Indiana Non-Seasonally Adjusted Rate 3.4%
 Indiana Seasonally Adjusted Rate 3.6%
 Source: DWD, Local Area Unemployment Statistics



Questions?

Please contact the DWD
 Research and Analysis
 Regional Labor Analyst
 listed below:

Mike Petro
 Regional Labor Analyst
 Research and Analysis

[Indiana Department of
 Workforce Development](http://Indiana Department of Workforce Development)
gpetro@dwd.in.gov