

INDUSTRY SECTOR SNAPSHOT

Economic Growth Region 12

Quarter 3 2025

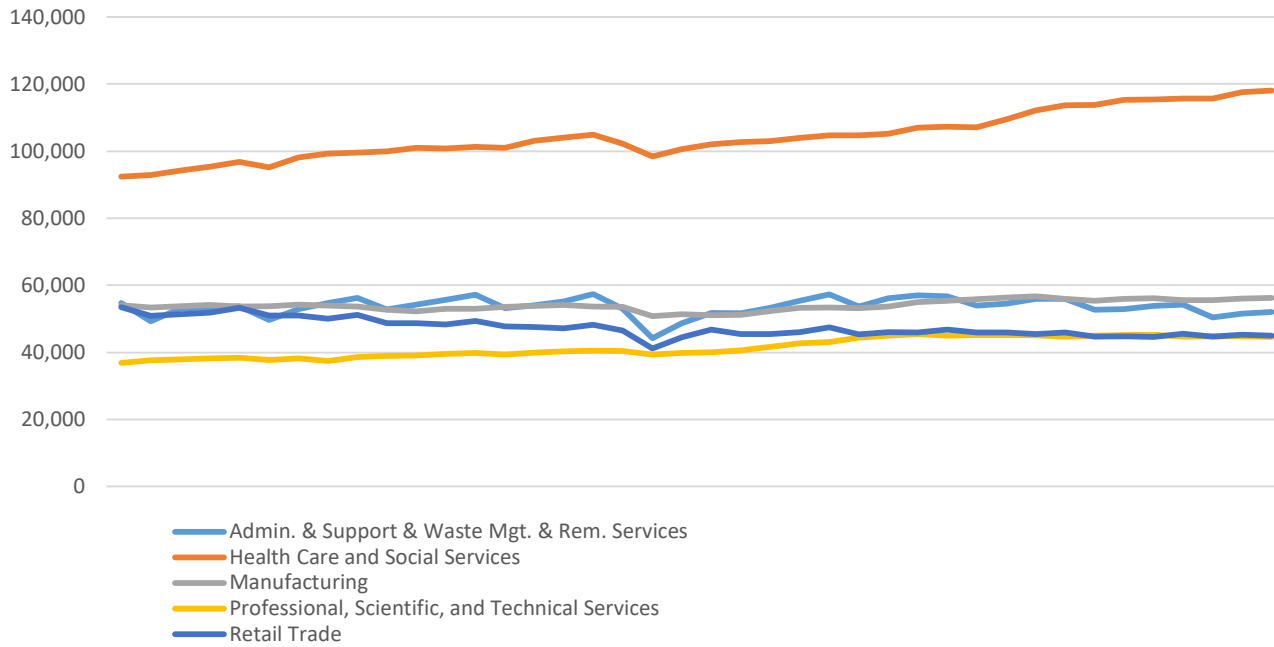
Marion County

Industry	Jobs	Previous Year	Establishments	Previous Year	Average Weekly Wage	Previous Year
Total	626,863	↓ -0.15%	25,608	↑ 0.70%	\$1,444	↑ 4.49%
Accommodation and Food Services	44,602	↓ -1.84%	2,134	↓ -0.42%	\$573	↑ 4.18%
Admin. & Support & Waste Mgt. & Rem. Services	52,043	↓ -3.39%	1,816	↓ -0.49%	\$920	↑ 1.55%
Agriculture, Forestry, Fishing and Hunting	489	↓ -10.11%	29	↓ -6.45%	\$1,558	↑ 24.24%
Arts, Entertainment, and Recreation	11,661	↑ 2.38%	349	↑ 1.16%	\$1,754	↑ 4.47%
Construction	38,809	↑ 3.04%	1,908	↑ 2.53%	\$1,692	↑ 3.42%
Educational Services	39,219	↓ -0.83%	532	↑ 0.57%	\$1,178	↓ -0.08%
Finance and Insurance	23,816	↓ -1.38%	1,473	↓ -0.94%	\$1,960	↑ 7.57%
Health Care and Social Services	118,105	↑ 2.39%	2,901	↑ 9.76%	\$1,564	↑ 4.48%
Information	7,046	↓ -4.90%	441	○ 0.00%	\$1,736	↑ 6.31%
Management of Companies and Enterprises	9,664	↓ -1.30%	226	↓ -8.50%	\$2,173	↑ 6.94%
Manufacturing	56,278	↑ 0.19%	894	↓ -1.76%	\$1,914	↑ 3.97%
Mining	224	↓ -3.45%	12	↑ 9.09%	\$1,577	↓ -0.57%
Other Services (Except Public Administration)	20,942	↑ 0.76%	2,102	↑ 1.55%	\$1,151	↑ 9.41%
Professional, Scientific, and Technical Services	44,636	↓ -1.47%	3,767	↓ -1.05%	\$2,052	↑ 4.16%
Public Administration	29,777	↓ -4.20%	156	↓ -0.64%	\$1,589	↑ 3.59%
Real Estate and Rental and Leasing	11,055	↑ 3.35%	1,406	↓ -0.57%	\$1,355	↑ 2.57%
Retail Trade	44,993	↑ 0.77%	2,722	↑ 0.22%	\$847	↑ 4.96%
Transportation & Warehousing	43,300	↑ 0.94%	877	↓ -1.46%	\$1,308	↑ 5.40%
Utilities	2,313	↑ 2.75%	43	↑ 7.50%	\$2,099	↑ 4.95%
Wholesale Trade	27,891	↓ -2.40%	1,820	↓ -2.26%	\$1,727	↑ 5.43%

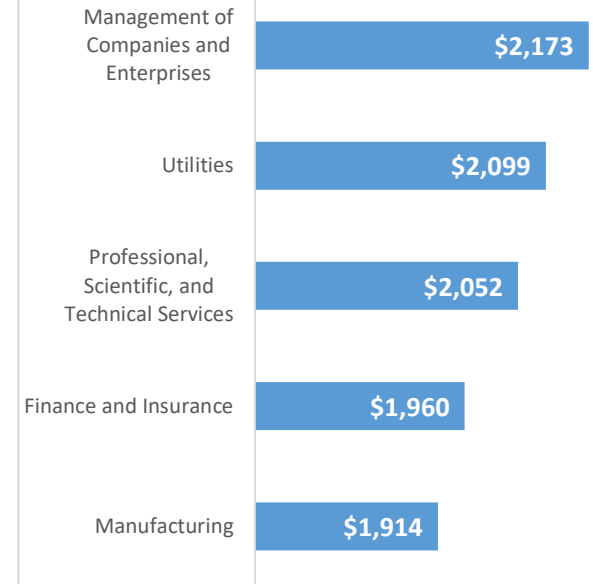
* These industries exclude county data (jobs and wages) that are not available due to non-disclosure requirements.

D = This item is not available due to non-disclosure requirements.

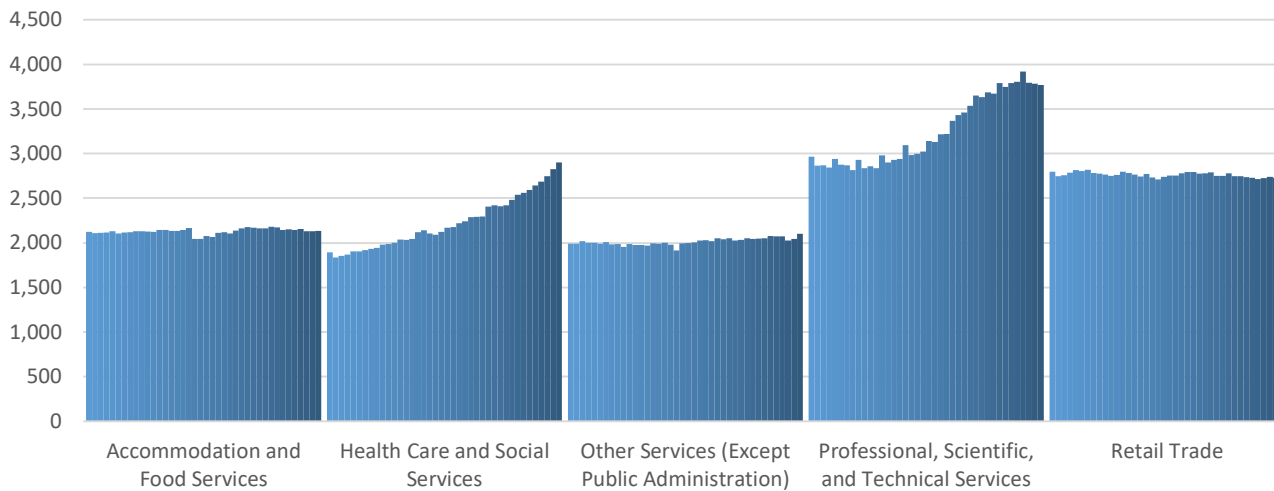
Top 5 Largest Industries by Jobs (past 10 years)



Top 5 Paying Industries by Average Weekly Wage



Top 5 Largest Industries by Establishments (past 10 years)



Source:

Quarterly Census of Employment and Wages, Indiana Dept. of Workforce Development

For more information, contact:

Jillian A Gregory

Regional Workforce Analyst

jgregory@dwd.in.gov

