



HOOSIERS BY THE NUMBERS

Your premier source for labor market information for Indiana.



LABOR MARKET REVIEW



December 2024 Labor Market Review

Reported by: Jillian Gregory

Regional Workforce Analyst

[Email Jillian](#)

jgregory@dwd.in.gov



Economic Growth Region 10

Statistical Data Report for December 2024, Released February 2025

State Employment and Unemployment

Unemployment rates were higher in December in 6 states, lower in 2 states, and stable in 42 states and the District of Columbia, the U.S. Bureau of Labor Statistics reported. Twenty-seven states and the district had jobless rate increases from a year earlier, 6 states had decreases, and 17 states had little change. The national unemployment rate changed little over the month at 4.1 percent but was 0.3 percentage points higher than in December 2023.

Nonfarm payroll employment increased in 2 states and was essentially unchanged in 48 states and the District of Columbia in December 2024. Over the year, nonfarm payroll employment increased in 33 states and was essentially unchanged in 17 states and the district.

South Dakota had the lowest jobless rate in December, 1.9 percent. Nevada had the highest unemployment rate, 5.7 percent, followed by California and the District of Columbia, 5.5 percent each. In total, 21 states had unemployment rates lower than the U.S. figure of 4.1 percent, 5 states and the district had higher rates, and 24 states had rates that were not appreciably different from that of the nation.

In December, six states had unemployment rate increases, the largest of which were in Alabama and Mississippi (+0.2 percentage point each). Two states had rate decreases: Minnesota (-0.2 percentage point) and Montana (-0.1 point). Forty-two states and the District of Columbia had jobless rates that were not notably different from those of a month earlier, though some had changes that were at least as large numerically as the significant changes.

Over the year, nonfarm payroll employment increased in 33 states and was essentially unchanged in 17 states and the District of Columbia. The largest job gains occurred in Texas (+284,200), California (+180,500), and Florida (+147,900). The largest percentage increase occurred in Idaho (+3.6 percent), followed by Missouri and South Carolina (+2.8 percent each).



Economic Growth Region (EGR) 10

Clark, Crawford, Floyd, Harrison, Scott, and Washington Counties

Unemployment Rates by State (seasonally adjusted): December 2024

U.S. - 4.1%

Illinois - 5.2%

Indiana - 4.5%

Kentucky - 5.2%

Michigan - 5%

Ohio - 4.4%

Source: U.S. Department of Labor, Bureau of Labor Statistics

Unemployment Rank by County (of 92 counties): December 2024

#10 - Crawford (4.9%)

#22 - Scott (4.6%)

#50 - Clark (3.7%)

#52 - Harrison (3.7%)

#59 - Washington (3.7%)

#66 - Floyd (3.5%)

Source: Indiana Department of Workforce Development, Research and Development, Local Area Unemployment Statistics

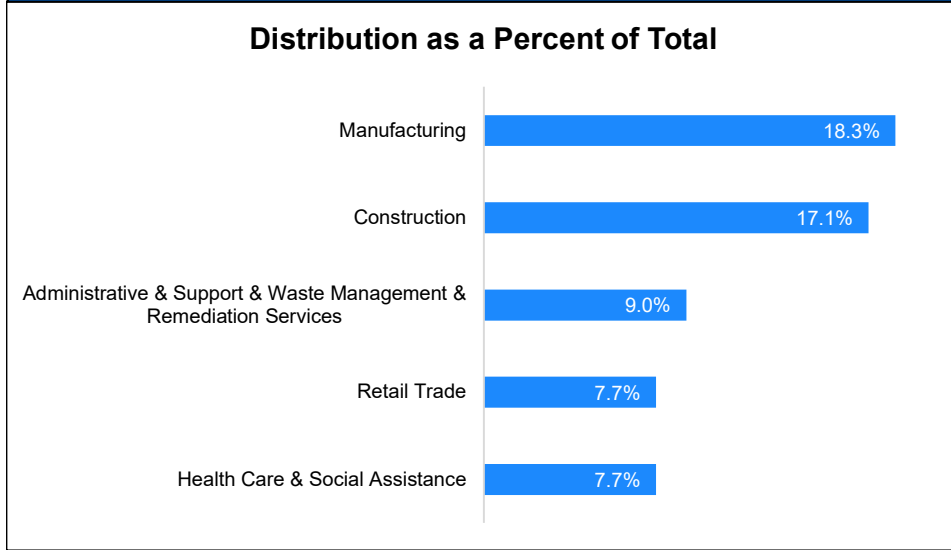
December 2024 Labor Force Estimates (not seasonally adjusted)						
Area	Labor Force	Employed	Unemployed	Dec-24	Nov-24	Dec-23
U.S.	167,746,000	161,294,000	6,452,000	3.8%	4.0%	3.5%
IN	3,439,659	3,301,061	138,598	4.0%	4.2%	2.9%
EGR 10	156,790	150,928	5,862	3.7%	3.9%	2.6%
Clark Co.	63,542	61,197	2,345	3.7%	3.9%	2.6%
Crawford Co.	4,790	4,557	233	4.9%	4.5%	3.1%
Floyd Co.	42,834	41,353	1,481	3.5%	3.7%	2.4%
Harrison Co.	20,791	20,014	777	3.7%	3.7%	2.3%
Scott Co.	10,754	10,255	499	4.6%	4.8%	3.0%
Washington Co.	14,079	13,552	527	3.7%	3.9%	2.5%
Corydon	1,452	1,375	77	5.3%	4.7%	2.7%
Jeffersonville	26,268	25,290	978	3.7%	4.0%	2.8%
New Albany	19,123	18,344	779	4.1%	4.3%	2.7%
Salem	2,730	2,613	117	4.3%	4.9%	3.2%
Scottsburg	2,791	2,642	149	5.3%	5.4%	3.6%

Source: Indiana Department of Workforce Development, Research & Analysis, Local Area Unemployment Statistics | Unemployment Statistics Released: 01/25 | Notes: The data displayed are presented as estimates only. The most recent month's data are always preliminary and are revised when the next month's data are released.

Consumer Price Index (CPI-U Change), Unadjusted Percent Change to December 2024 from				
CPI Item	Dec-23	Nov-24	Dec-23	Nov-24
	U.S. City		Midwest Region*	
All Items	2.9%	0.0%	3.0%	0.2%
Food & Beverages	2.4%	0.2%	2.0%	-0.2%
Housing	4.1%	0.2%	4.9%	0.4%
Apparel	1.2%	-1.7%	1.3%	-2.5%
Transportation	1.6%	-0.3%	1.4%	0.3%
Medical Care	2.8%	0.1%	2.3%	0.2%
Recreation	1.1%	0.0%	1.3%	0.1%
Education & Communication	0.6%	-0.1%	-0.2%	0.1%
Other Goods & Services	3.3%	-0.4%	5.0%	-0.4%

*Midwest region = Midwest Urban Average. Midwest Region includes Illinois, Indiana, Iowa, Kansas, Michigan, Minnesota, Missouri, Nebraska, North Dakota, Ohio, South Dakota and Wisconsin | Source: U.S. Bureau of Labor Statistics

Percentage of Unemployment Claims for Top 5 Region 10 Industries December 2024



Source: Indiana Department of Workforce Development, Research and Analysis

WARN Notices

WARN Notices for Region 10 for December 2024				
Company	City	County	# of workers affected	Notice Date

There are no WARN Notices for December 2024 for EGR 10.

Source: Indiana Department of Workforce Development, WARN Notices | For information on WARN Act requirements, you may go to the U.S. Department of Labor Employment Training Administration Fact Sheet: <https://www.doleta.gov/programs/factsht/warn.htm>

Unemployment Claims: December 2024

Region 10

Initial Claims

- 12/07/24 - 157
- 12/14/24 - 128
- 12/21/24 - 94(D)
- 12/28/24 - 114(D)

Continued Claims

- 12/07/24 - 658
- 12/14/24 - 664
- 12/21/24 - 679
- 12/28/24 - 767

Total Claims

- 12/07/24 - 815
- 12/14/24 - 792
- 12/21/24 - 773
- 12/28/24 - 881

State of Indiana

Initial Claims

- 12/07/24 - 5,319
- 12/14/24 - 3,846
- 12/21/24 - 3,726
- 12/28/24 - 3,675

Continued Claims

- 12/07/24 - 23,610
- 12/14/24 - 24,094
- 12/21/24 - 24,631
- 12/28/24 - 28,033

Total Claims

- 12/07/24 - 28,929
- 12/14/24 - 27,940
- 12/21/24 - 28,357
- 12/28/24 - 31,708

(D) indicates item is affected by non-disclosure issues relating to industry or ownership status | *Numbers subject to weekly revision | Source: Indiana Department of Workforce Analysis

Frequently Listed Jobs	
Top 20 job listings in Region 10 in the past month	
Rank	Occupations
1	Registered Nurses
2	Nursing Assistants
3	Licensed Practical and Licensed Vocational Nurses
4	Industrial Engineers
5	Janitors and Cleaners, Except Maids and Housekeeping Cleaners
6	Operations Research Analysts
7	Maids and Housekeeping Cleaners
8	Physical Therapists
9	Cooks, All Other
10	Occupational Therapy Assistants
11	Speech-Language Pathologists
12	Civil Engineers
13	Farmworkers and Laborers, Crop, Nursery, and Greenhouse
14	Human Resources Specialists
15	Physical Therapist Assistants
16	Heavy and Tractor-Trailer Truck Drivers
17	Critical Care Nurses
18	Receptionists and Information Clerks
19	Personal Financial Advisors
20	Industrial Truck and Tractor Operators

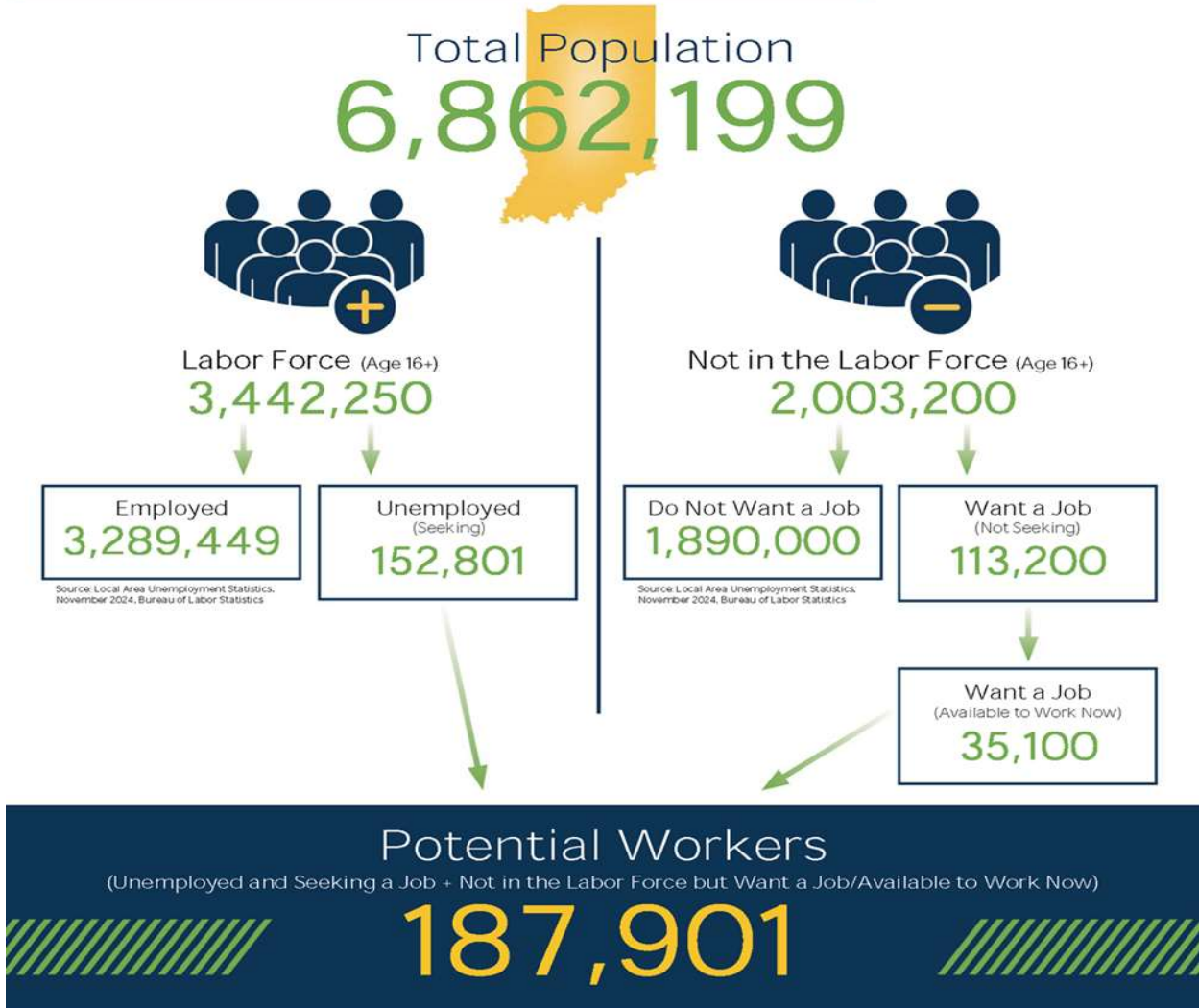
Applicant Pool	
Top 20 occupations desired by applicants on their resumes in the past 12 months	
Occupations	# of applicants
Production Workers, All Other	244
Customer Service Representatives	197
Assemblers and Fabricators, All Other	182
Heavy and Tractor-Trailer Truck Drivers	164
Helpers--Production Workers	151
Laborers and Freight, Stock, and Material Movers, Hand	135
Office Clerks, General	124
Cashiers	107
Managers, All Other	103
Welders, Cutters, Solderers, and Brazers	94
Office and Administrative Support Workers, All Other	75
Receptionists and Information Clerks	70
Industrial Truck and Tractor Operators	68
Construction and Related Workers, All Other	65
First-Line Supervisors of Production and Operating Workers	60
Retail Salespersons	59
Construction Laborers	56
Shipping, Receiving, and Traffic Clerks	52
Secretaries and Administrative Assistants, Except Legal, Medical, and Executive	51
Inspectors, Testers, Sorters, Samplers, and Weighers	49

Source: Indiana Workforce Development, Indiana Career Connect. * Due to an upgrade in the reporting system, there is a notable change in Job Postings recorded. The tool used to measure Job Postings was upgraded to prevent malicious or false postings. While customers adjust to the enhancements a drop in the record is to be expected

BREAKDOWN

November Indiana Labor Force

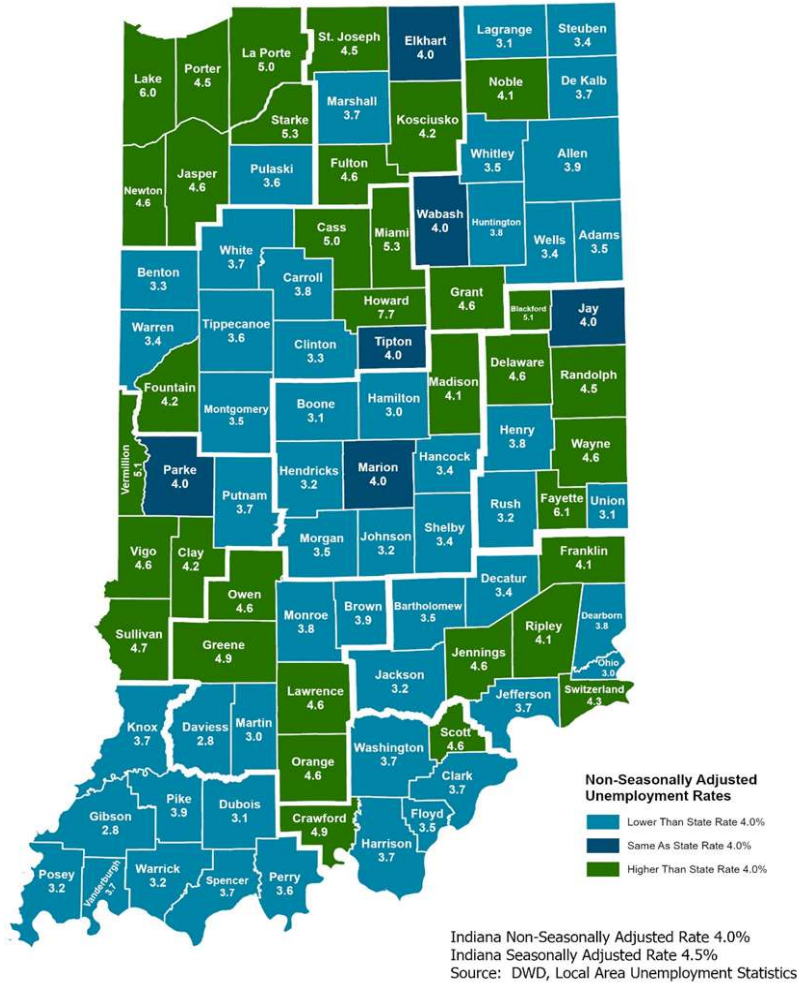
Released December 20, 2024



More about the US Bureau of Labor Statistics data sources used within:
Local Area Unemployment Statistics (LAUS): Captures Indiana's labor force, which includes those currently employed and those who are unemployed and actively seeking work.
Current Population Survey (CPS): Captures individuals not participating in Indiana's Labor Force. This set includes non-participants that do not want a job (i.e. retirees and students) and those that want a job, but are not actively seeking work.
U.S. Census Bureau, Indiana Population 2023.

Resource: Notes on Using Current Population Survey (CPS) Subnational Data and Differences Between CPS and LAUS Estimates

County Unemployment Rates December 2024



Questions?
 Please contact the DWD
 Research and Analysis
 Regional Labor Analyst
 listed below:

Jillian A. Gregory
 Regional Labor Analyst
 Research and Analysis
[Indiana Department of Workforce Development](https://www.in.gov/dwd/)
jgregory@dwd.in.gov