



# HOOSIERS BY THE NUMBERS

Your premier source for labor market information for Indiana.

# DWD

INDIANA DEPARTMENT OF  
**WORKFORCE**  
DEVELOPMENT

## LABOR MARKET REVIEW



## December 2024 Labor Market Review

Reported by: Kathy Jaworski

Regional Workforce Analyst

[Email Kathy](#)

[kjaworski@dwd.in.gov](mailto:kjaworski@dwd.in.gov)

Tel: 219-841-6347

# DWD

INDIANA DEPARTMENT OF  
**WORKFORCE**  
DEVELOPMENT



## LABOR MARKET REVIEW

# Economic Growth Region 1

Statistical Data Report for December 2024, Released February 2025

## State Employment and Unemployment

Unemployment rates were higher in December in 6 states, lower in 2 states, and stable in 42 states and the District of Columbia, the U.S. Bureau of Labor Statistics reported. Twenty-seven states and the District had jobless rate increases from a year earlier, 6 states had decreases, and 17 states had little change. The national unemployment rate changed little over the month at 4.1 percent but was 0.3 percentage point higher than in December 2023. Nonfarm payroll employment increased in 2 states and was essentially unchanged in 48 states and the District in December 2024. Over the year, nonfarm payroll employment increased in 33 states and was essentially unchanged in 17 states and the District.



## Economic Growth Region (EGR) 1

Jasper, Lake, LaPorte, Newton, Porter, Pulaski and Starke Counties

December 2024 Labor Force Estimates (not seasonally adjusted)						
Area	Labor Force	Employed	Unemployed	Dec-24	Nov-24	Dec-23
U.S.	167,746,000	161,294,000	6,452,000	3.8%	4.0%	3.5%
IN	3,439,659	3,301,061	138,598	4.0%	4.2%	2.9%
Gary Metro Div	340,809	322,045	18,764	5.5%	5.3%	4.2%
MichCity-LaPorte MSA	48,383	45,987	2,396	5.0%	4.9%	3.6%
EGR 1	405,949	384,023	21,926	5.4%	5.2%	4.1%
Lake Co.	230,835	217,042	13,793	6.0%	5.7%	4.7%
Porter Co.	86,791	82,895	3,896	4.5%	4.4%	3.2%
LaPorte Co.	48,383	45,987	2,396	5.0%	4.9%	3.6%
Newton Co.	6,875	6,558	317	4.6%	4.3%	3.3%
Jasper Co.	16,308	15,550	758	4.6%	4.4%	3.1%
Starke Co.	9,762	9,245	517	5.3%	5.1%	3.8%
Pulaski Co.	6,995	6,746	249	3.6%	3.9%	2.1%
East Chicago	9,794	9,033	761	7.8%	7.4%	6.8%
Hammond	33,943	31,773	2,170	6.4%	6.0%	5.3%
Munster	11,646	11,108	538	4.6%	4.6%	3.4%
Dyer	8,707	8,352	355	4.1%	4.1%	3.1%
Schererville	16,018	15,297	721	4.5%	4.3%	3.5%
Crown Point	15,907	15,109	798	5.0%	4.7%	4.0%
Griffith	8,804	8,267	537	6.1%	5.7%	4.1%
Highland	12,324	11,715	609	4.9%	4.9%	3.9%
Gary	26,560	24,222	2,338	8.8%	9.0%	7.5%
Merrillville	17,094	15,908	1,186	6.9%	6.5%	5.1%
Hobart	14,627	13,776	851	5.8%	4.9%	4.4%
Lake Station	4,928	4,493	435	8.8%	8.2%	7.3%
Portage	18,080	17,097	983	5.4%	5.1%	4.0%
Chesterton	7,187	6,844	343	4.8%	4.6%	3.4%
Valparaiso	16,713	16,044	669	4.0%	4.2%	3.1%
Michigan City	12,851	12,153	698	5.4%	5.6%	4.1%
LaPorte	9,611	9,162	449	4.7%	4.8%	3.8%

## Unemployment Rates by State (seasonally adjusted): December 2024

U.S. - 4.1%

Illinois - 5.2%

Indiana - 4.5%

Kentucky - 5.2%

Michigan - 5%

Ohio - 4.4%

Source: U.S. Department of Labor, Bureau of Labor Statistics

## Unemployment Rank by County (of 92 counties): December 2024

#3 - Lake (6%)

#5 - Starke (5.3%)

#9 - LaPorte (5%)

#16 - Jasper (4.6%)

#19 - Newton (4.6%)

#25 - Porter (4.5%)

#62 - Pulaski (3.6%)

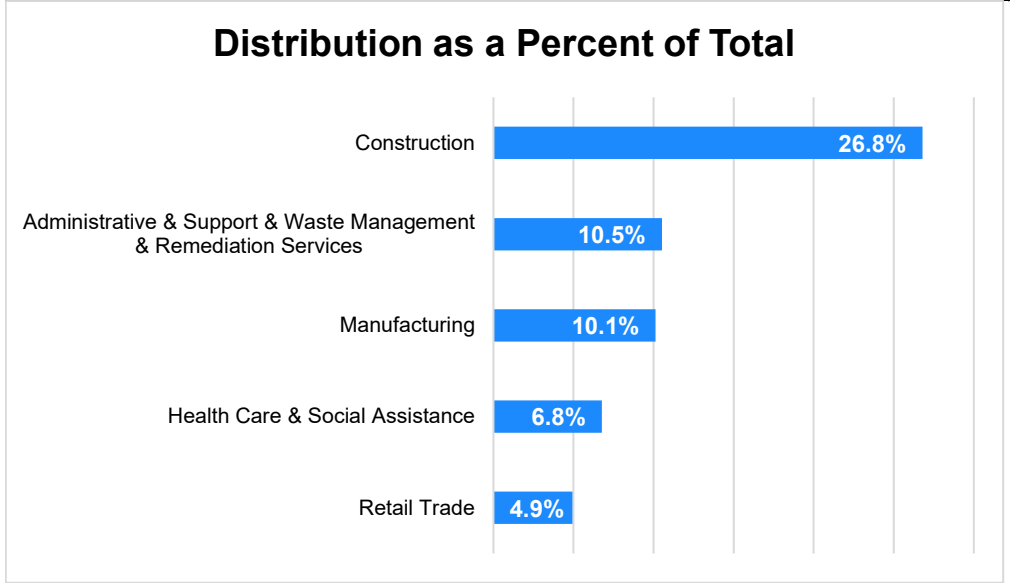
Source: Indiana Department of Workforce Development, Research and Development, Local Area Unemployment Statistics

Source: Indiana Department of Workforce Development, Research & Analysis, Local Area Unemployment Statistics | Unemployment Statistics Released:01/25 | Notes: The data displayed are presented as estimates only. The most recent month's data are always preliminary and are revised when the next month's data are released. Gary Division; Lake, Porter, Jasper and Newton Counties. Michigan City-LaPorte MSA: Laporte County

Statewide Average Weekly Hours & Earnings by Industry for December 2024			
Industry	Avg. Earnings per hr	Avg. # of hours worked per week	Avg. Earnings per week
Construction	\$34.06	39.7	\$1,352.18
Manufacturing	\$26.20	42.5	\$1,113.50
Durable Goods	\$27.16	44.4	\$1,205.90
Fabricated Metal Product Manufacturing	\$26.02	43.3	\$1,126.67
Transportation Equipment Manufacturing	\$29.65	44.4	\$1,316.46
Non-Durable Goods	\$23.41	37.9	\$887.24
Retail Trade	\$18.78	29.8	\$559.64
Financial Activities	\$29.71	37.6	\$1,117.10
Health Care and Social Assistance	\$31.46	33.1	\$1,041.33
Accommodation and Food Services	\$16.35	23.3	\$380.96
Food Services and Drinking Places	\$15.92	22.7	\$361.38

Source: Indiana Department of Workforce Development, Current Employment Statistics

### Percentage of Unemployment Claims for Top 5 Region 1 Industries December 2024



Source: Indiana Department of Workforce Development, Research and Analysis

### WARN Notices

WARN Notices for Region 1 for December 2024				
Company	City	County	# affected	Notice Date

There are no WARN Notices for December 2024 for Region 1.

Significant WARN Notices for nearby locations				
Company	City	County	# Affected	Notice Date
Four companies in Illinois, Chicagoland	Various	Various	425	Dec-24

Source: Indiana Department of Workforce Development, WARN Notices | For information on WARN Act requirements, you may go to the U.S. Department of Labor Employment Training Administration Fact Sheet: <https://www.doleta.gov/programs/factsht/warn.htm>

### Unemployment Claims: December 2024

#### Region 1

##### Initial Claims

12/07/24 - 697(D)

12/14/24 - 581

12/21/24 - 597(D)

12/28/24 - 677(D)

##### Continued Claims

12/07/24 - 2,840

12/14/24 - 2,920

12/21/24 - 3,194

12/28/24 - 3,675

##### Total Claims

12/07/24 - 3,537

12/14/24 - 3,501

12/21/24 - 3,791

12/28/24 - 4,352

#### State of Indiana

##### Initial Claims

12/07/24 - 5,319

12/14/24 - 3,846

12/21/24 - 3,726

12/28/24 - 3,675

##### Continued Claims

12/07/24 - 23,610

12/14/24 - 24,094

12/21/24 - 24,631

12/28/24 - 28,033

##### Total Claims

12/07/24 - 28,929

12/14/24 - 27,940

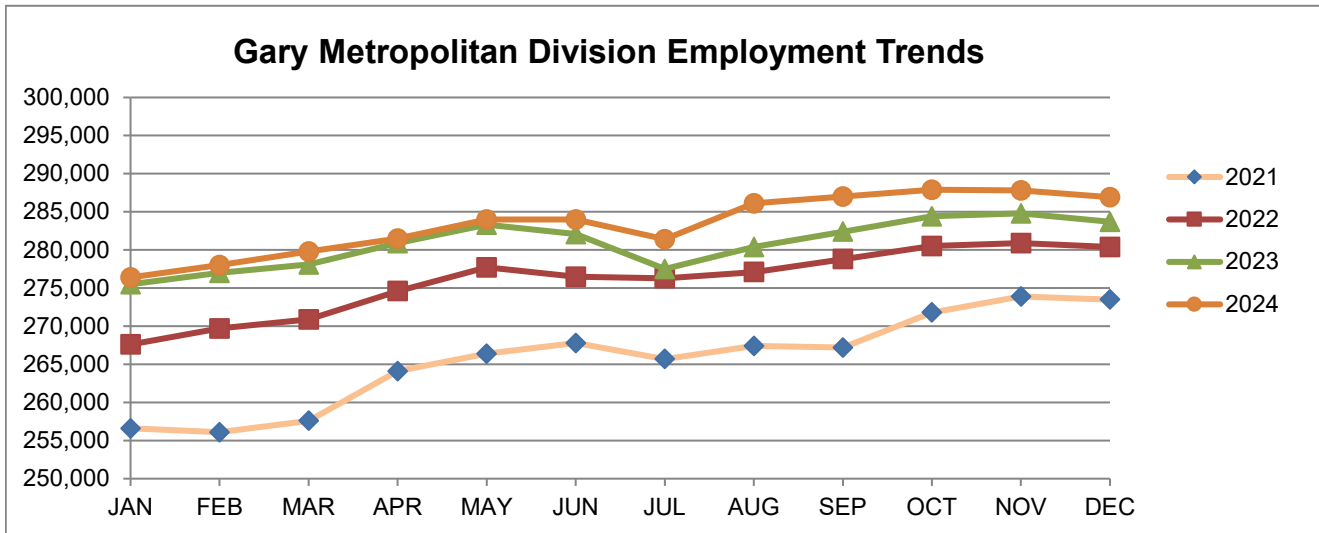
12/21/24 - 28,357

12/28/24 - 31,708

Notes: (D) Indicates one or more counties are excluded due to non-disclosure issues | Numbers subject to weekly revision | Source: Indiana Department of Workforce Development, Research and Analysis

Gary Metropolitan Division							
Wage and Salaried Employment	December 2024			# Change	% Change	# Change	% Change
Industry	Dec-24	Nov-24	Dec-23	Nov-24 to Dec-24	Dec-23 to Dec-24	Dec-23 to Dec-24	Dec-23 to Dec-24
<b>Total Nonfarm</b>	<b>286,900</b>	<b>287,800</b>	<b>283,700</b>	<b>-900</b>	<b>-0.3%</b>	<b>3,200</b>	<b>1.1%</b>
<b>Total Private</b>	<b>253,900</b>	<b>254,300</b>	<b>250,400</b>	<b>-400</b>	<b>-0.2%</b>	<b>3,500</b>	<b>1.4%</b>
Goods Producing	51,000	51,700	51,400	-700	-1.4%	-400	-0.8%
Service Providing	235,900	236,100	232,300	-200	-0.1%	3,600	1.6%
Private Service Providing	202,900	202,600	199,000	300	0.2%	3,900	2.0%
Mining and Logging	100	100	100	0	0.0%	0	0.0%
Mining, Logging and Construction	16,400	17,000	17,100	-600	-3.5%	-700	-4.1%
Construction	16,300	16,900	17,000	-600	-3.6%	-700	-4.1%
Manufacturing	34,600	34,700	34,300	-100	-0.3%	300	0.9%
Durable Goods	24,800	24,800	25,300	0	0.0%	-500	-2.0%
Trade, Transportation and Utilities	62,800	62,300	62,600	500	0.8%	200	0.3%
Wholesale Trade	10,700	10,600	10,500	100	0.9%	200	1.9%
Retail Trade	33,800	33,500	33,400	300	0.9%	400	1.2%
General Merchandise Stores	8,000	7,800	7,900	200	2.6%	100	1.3%
Other Gen Merch Stores	5,700	5,600	5,500	100	1.8%	200	3.6%
Transportation, Warehousing and Utilities	18,300	18,200	18,700	100	0.6%	-400	-2.1%
Information	1,800	1,800	1,800	0	0.0%	0	0.0%
Financial Activities	9,200	9,200	9,300	0	0.0%	-100	-1.1%
Professional and Business Services	29,400	29,400	28,900	0	0.0%	500	1.7%
Employment Services	3,800	3,800	3,700	0	0.0%	100	2.7%
Education and Health Services	51,800	51,700	50,000	100	0.2%	1,800	3.6%
Educational Services	6,100	6,100	5,400	0	0.0%	700	13.0%
Health Care and Social Assistance	45,700	45,600	44,600	100	0.2%	1,100	2.5%
General Medical and Surgical Hospitals	13,500	13,400	13,300	100	0.8%	200	1.5%
Leisure and Hospitality	33,700	33,800	32,200	-100	-0.3%	1,500	4.7%
Arts, Entertainment and Recreation	3,800	3,900	3,800	-100	-2.6%	0	0.0%
Food Services and Drinking Places	29,900	29,900	28,400	0	0.0%	1,500	5.3%
Other Services	14,200	14,400	14,200	-200	-1.4%	0	0.0%
<b>Total Government</b>	<b>33,000</b>	<b>33,500</b>	<b>33,300</b>	<b>-500</b>	<b>-1.5%</b>	<b>-300</b>	<b>-0.9%</b>
Federal Government	2,000	2,000	2,000	0	0.0%	0	0.0%
State Government	4,000	4,100	3,900	-100	-2.4%	100	2.6%
Local Government	27,000	27,400	27,400	-400	-1.5%	-400	-1.5%
Local Government Educational Services	16,300	16,100	16,100	200	1.2%	200	1.2%

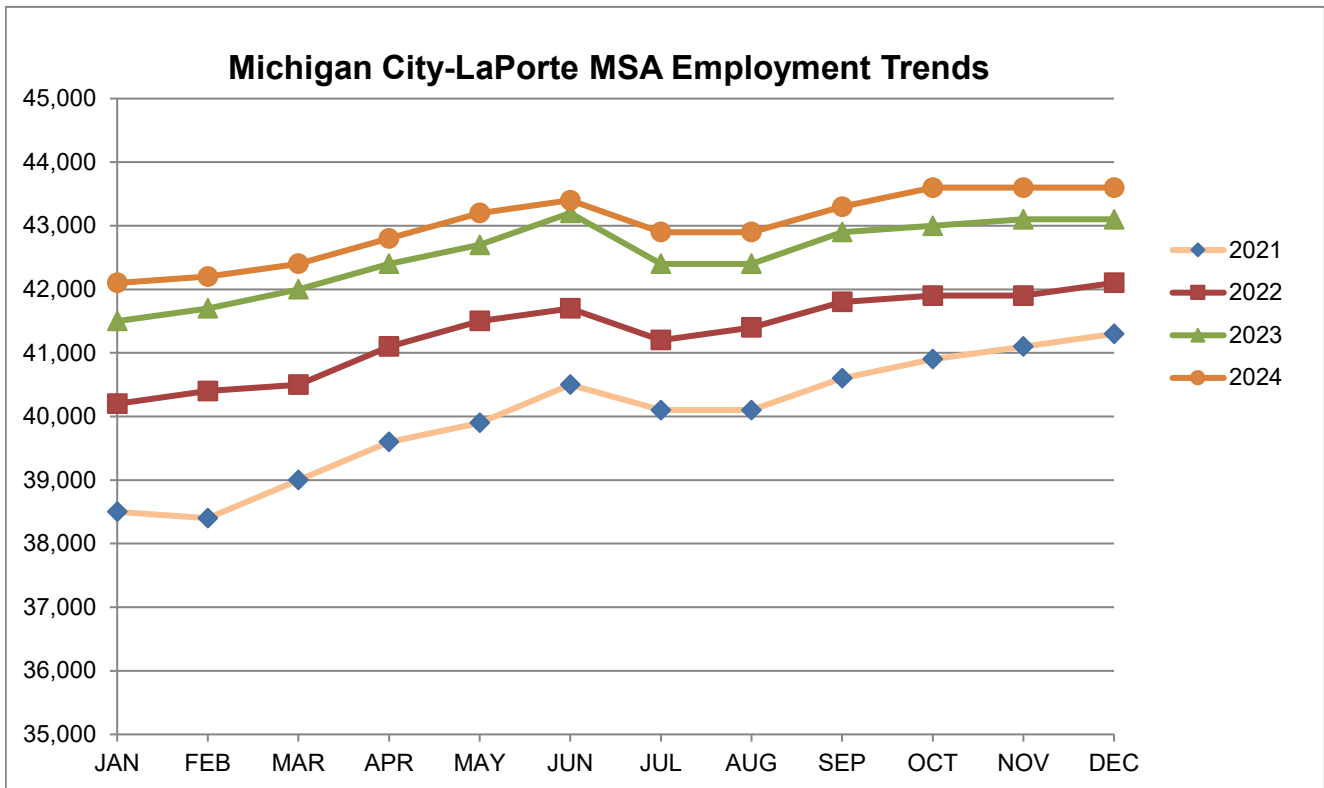
Source: Indiana Dept of Workforce Development, Research and Analysis, Current Employment Statistics



Source: Indiana Department of Workforce Development, Research & Analysis, Current Employment Statistics | Note: Historical data for the most recent 4 years (both seasonally adjusted and not seasonally adjusted) are revised near the beginning of each calendar year, prior to the release of January estimates for statewide data.

Michigan City-LaPorte MSA							
Wage and Salaried Employment	December 2024			# Change	% Change	# Change	% Change
Industry	Dec-24	Nov-24	Dec-23	Nov-24 to Dec-24	Dec-23 to Dec-24	Dec-23 to Dec-24	Dec-23 to Dec-24
<b>Total Nonfarm</b>	<b>43,600</b>	<b>43,600</b>	<b>43,100</b>	<b>0</b>	<b>0.0%</b>	<b>500</b>	<b>1.2%</b>
<b>Total Private</b>	<b>37,100</b>	<b>37,200</b>	<b>36,700</b>	<b>-100</b>	<b>-0.3%</b>	<b>400</b>	<b>1.1%</b>
Goods Producing	11,000	11,100	10,900	-100	-0.9%	100	0.9%
Service Providing	32,600	32,500	32,200	100	0.3%	400	1.2%
Private Service Providing	26,100	26,100	25,800	0	0.0%	300	1.2%
Mining, Logging and Construction	2,500	2,500	2,400	0	0.0%	100	4.2%
Manufacturing	8,500	8,600	8,500	-100	-1.2%	0	0.0%
Trade, Transportation & Utilities	9,100	9,100	9,000	0	0.0%	100	1.1%
Wholesale Trade	1,900	1,900	1,900	0	0.0%	0	0.0%
Retail Trade	5,300	5,200	5,300	100	1.9%	0	0.0%
Information	200	200	200	0	0.0%	0	0.0%
Financial Activities	1,400	1,400	1,400	0	0.0%	0	0.0%
Professional and Business Services	3,000	3,000	3,000	0	0.0%	0	0.0%
Education and Health Services	6,200	6,200	6,100	0	0.0%	100	1.6%
Leisure and Hospitality	4,800	4,800	4,700	0	0.0%	100	2.1%
Other Services	1,400	1,400	1,400	0	0.0%	0	0.0%
<b>Total Government</b>	<b>6,500</b>	<b>6,400</b>	<b>6,400</b>	<b>100</b>	<b>1.6%</b>	<b>100</b>	<b>1.6%</b>
Federal Government	200	200	200	0	0.0%	0	0.0%
State Government	1,900	1,900	1,900	0	0.0%	0	0.0%
Local Government	4,400	4,300	4,300	100	2.3%	100	2.3%
Local Government Educational Services	2,500	2,500	2,400	0	0.0%	100	4.2%

Source: Indiana Dept of Workforce Development, Research and Analysis, Current Employment Statistics



Source: Indiana Department of Workforce Development, Research & Analysis, Current Employment Statistics | Note: Historical data for the most recent 4 years (both seasonally adjusted and not seasonally adjusted) are revised near the beginning of each calendar year, prior to the release of January estimates for statewide data.

Frequently Listed Jobs	
Top 20 job listings by number of openings in Region 1 in the past month	
Rank	Occupations
1	Security Guards
2	Heavy and Tractor-Trailer Truck Drivers
3	Farmworkers and Laborers, Crop, Nursery, and Greenhouse
4	Agricultural Equipment Operators
5	Correctional Officers and Jailers
6	Helpers--Production Workers
7	Extraction Workers, All Other
8	Fast Food and Counter Workers
9	Nursing Assistants
10	Helpers--Brickmasons, Blockmasons, Stonemasons, and Tile and Marble Setters
11	Registered Nurses
12	Tellers
13	Maintenance and Repair Workers, General
14	Physical Therapists
15	Production Workers, All Other
16	Maintenance Workers, Machinery
17	Licensed Practical and Licensed Vocational Nurses
18	General and Operations Managers
19	New Accounts Clerks
20	Chefs and Head Cooks

Source: Indiana Workforce Development, Indiana Career Connect

Applicant Pool	
Top 20 occupations desired by applicants on their resumes in the past 12 months	
Occupations	# of applicants
Production Workers, All Other	994
Helpers--Production Workers	924
Laborers and Freight, Stock, and Material Movers, Hand	784
Customer Service Representatives	637
Assemblers and Fabricators, All Other	541
Heavy and Tractor-Trailer Truck Drivers	527
Cashiers	524
Construction Laborers	422
Office Clerks, General	370
Maintenance and Repair Workers, General	306
Managers, All Other	301
Carpenters	301
Industrial Truck and Tractor Operators	273
Welders, Cutters, Solderers, and Brazers	263
Retail Salespersons	261
Office and Administrative Support Workers, All Other	250
Janitors and Cleaners, Except Maids and Housekeeping Cleaners	244
Construction and Related Workers, All Other	238
Extraction Workers, All Other	229
Receptionists and Information Clerks	227

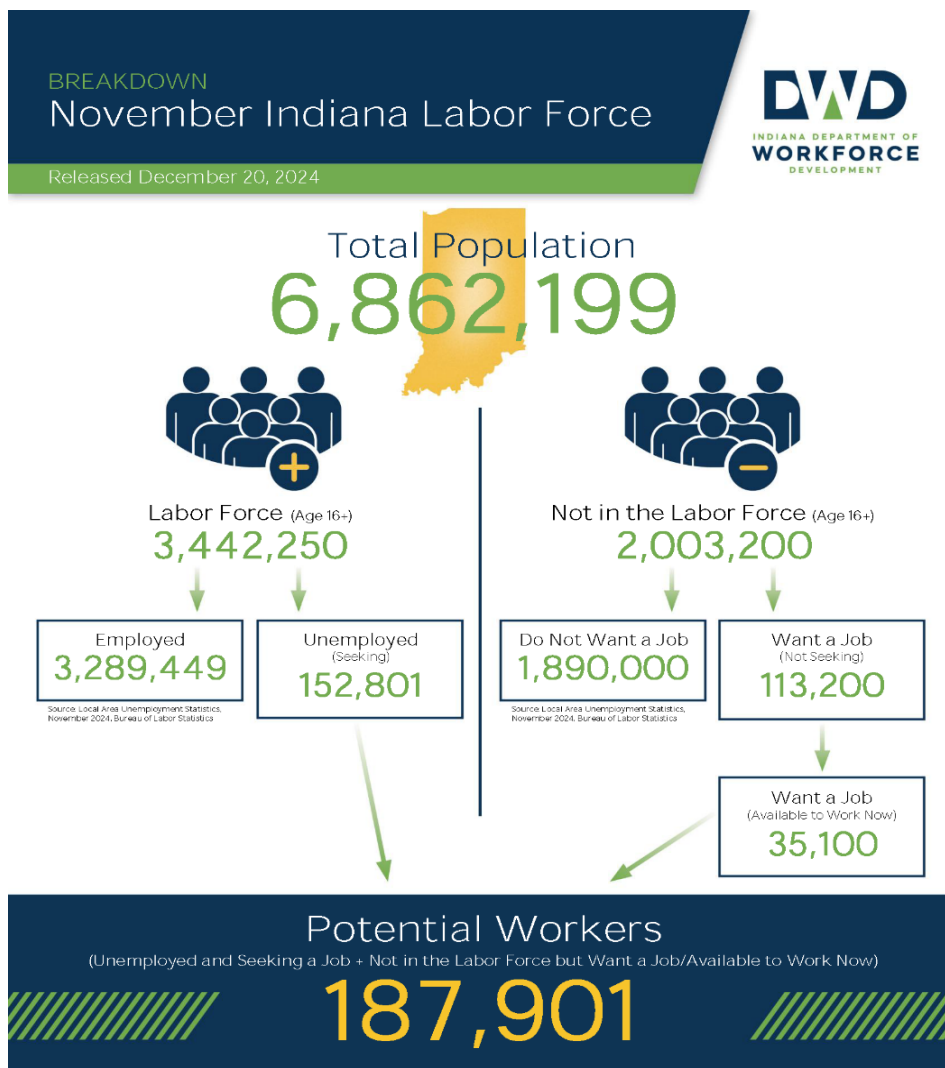
Source: Indiana Workforce Development, Indiana Career Connect

\* Due to an upgrade in the reporting system, there is a notable change in Job Postings recorded. The tool used to measure Job Postings was upgraded to prevent malicious or false postings. While customers adjust to the enhancements a drop in the record is to be expected.



Consumer Price Index (CPI-U Change), Unadjusted Percent Change to December 2024 from						
CPI Item	Dec-23	Nov-24	Dec-23	Nov-24	Dec-23	Nov-24
	Chicago-Naperville-Elgin, IN-IL-WI		U.S. City		Midwest Region*	
<b>All Items</b>	<b>3.9%</b>	<b>0.1%</b>	<b>2.9%</b>	<b>0.0%</b>	<b>3.0%</b>	<b>0.2%</b>
Food & Beverages	1.6%	-0.8%	2.4%	0.2%	2.0%	-0.2%
Housing	4.8%	0.6%	4.1%	0.2%	4.9%	0.4%
Apparel	6.5%	1.7%	1.2%	-1.7%	1.3%	-2.5%
Transportation	3.9%	-1.0%	1.6%	-0.3%	1.4%	0.3%
Medical Care	3.6%	0.2%	2.8%	0.1%	2.3%	0.2%
Recreation	1.7%	0.2%	1.1%	0.0%	1.3%	0.1%
Education & Communication	1.6%	-0.2%	0.6%	-0.1%	-0.2%	0.1%
Other Goods & Services	7.9%	-0.6%	3.3%	-0.4%	5.0%	-0.4%

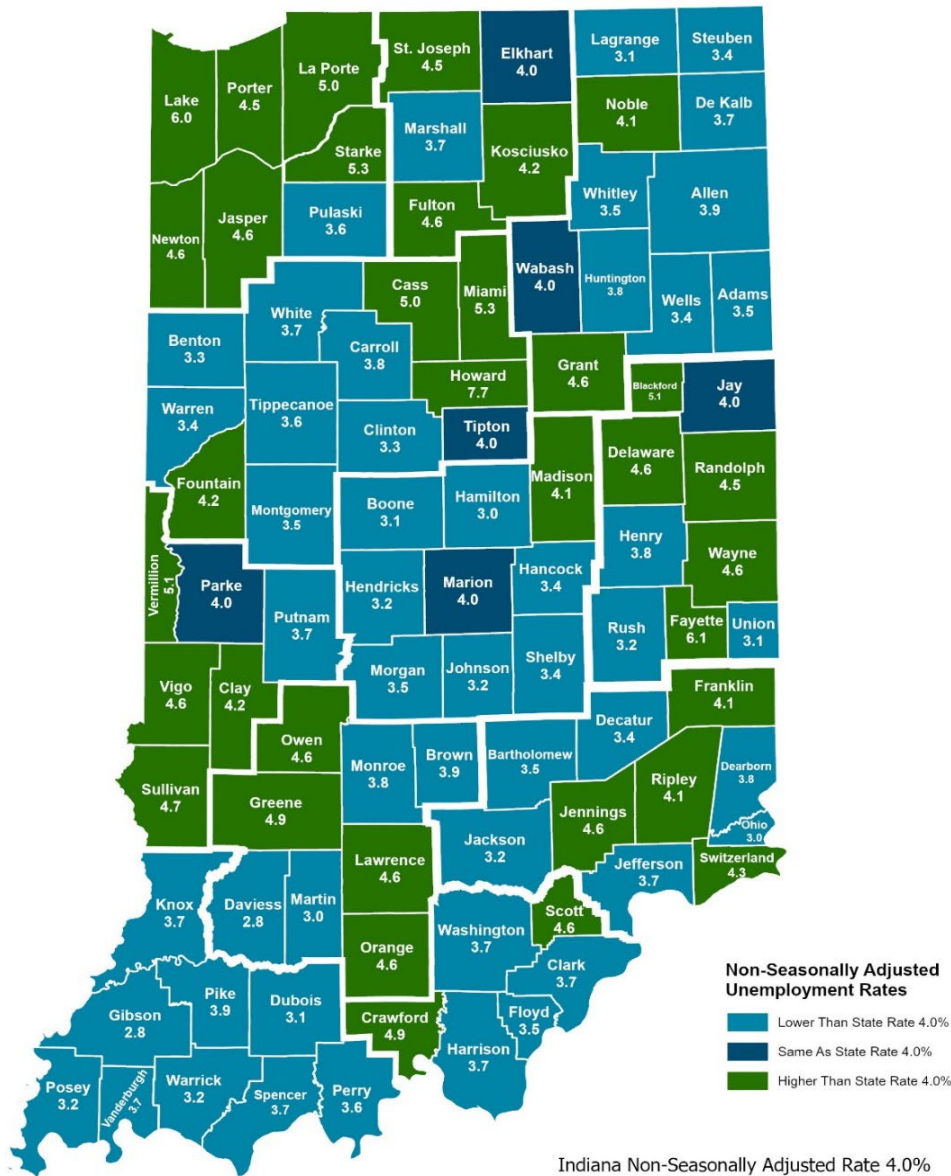
\*Midwest region = Midwest Urban Average. Midwest Region includes Illinois, Indiana, Iowa, Kansas, Michigan, Minnesota, Missouri, Nebraska, North Dakota, Ohio, South Dakota and Wisconsin | Source: U.S. Bureau of Labor Statistics



More about the U.S. Bureau of Labor Statistics data sources used within:  
Local Area Unemployment Statistics (LAUS): Captures Indiana's labor force, which includes those currently employed and those who are unemployed and actively seeking work.  
Current Population Survey (CPS): Captures individuals not participating in Indiana's Labor Force. This set includes non-participants that do not want a job (i.e. retirees and students) and those that want a job, but are not actively seeking work.  
U.S. Census Bureau, Indiana Population 2005.

Resource: Notes on Using Current Population Survey (CPS) Subnational Data and Differences Between CPS and LAUS Estimates

# County Unemployment Rates December 2024



**Non-Seasonally Adjusted Unemployment Rates**

- Lower Than State Rate 4.0%
- Same As State Rate 4.0%
- Higher Than State Rate 4.0%

Indiana Non-Seasonally Adjusted Rate 4.0%  
 Indiana Seasonally Adjusted Rate 4.5%  
 Source: DWD, Local Area Unemployment Statistics

**Questions?**  
 Please contact the DWD  
 Research and Analysis  
 Regional Labor Analyst  
 listed below:

Kathy Jaworski  
 Regional Labor Analyst  
 Research and Analysis

[Indiana Department of Workforce Development](https://www.in.gov/workforce)

219-841-6347

[kjaworski@dwd.in.gov](mailto:kjaworski@dwd.in.gov)