



HOOSIERS BY THE NUMBERS

Your premier source for labor market information for Indiana.



INDIANA
DEPARTMENT OF
WORKFORCE
DEVELOPMENT

LABOR MARKET REVIEW



April 2021 Labor Market Review

Reported by: Kathy Jaworski

Regional Workforce Analyst

[Email Kathy](#)

kjaworski@dwd.in.gov

Tel: 219-841-6347



INDIANA
DEPARTMENT OF
WORKFORCE
DEVELOPMENT

LABOR MARKET REVIEW

Economic Growth Region 1

Statistical Data Report for April 2021, Released June 2021

State Employment and Unemployment

Unemployment rates were lower in April in 12 states and the District of Columbia and stable in 38 states, the U.S. Bureau of Labor Statistics reported. Forty-eight states and the District had jobless rate decreases from a year earlier and two states had little change. The national unemployment rate, 6.1 percent, was little changed over the month, but was 8.7 percentage points lower than in April 2020. Nonfarm payroll employment increased in 9 states and the District of Columbia, decreased in 2 states, and was essentially unchanged in 39 states in April 2021. Over the year, nonfarm payroll employment increased in all states and the District.



Economic Growth Region (EGR) 1

Jasper, Lake, LaPorte, Newton, Porter, Pulaski and Starke Counties

Unemployment Rates by State (seasonally adjusted): April 2021

U.S. - 6.1%

Illinois - 7.1%

Indiana - 3.9%

Kentucky - 4.7%

Michigan - 4.9%

Ohio - 4.7%

Source: U.S. Department of Labor, Bureau of Labor Statistics

Unemployment Rank by County (of 92 counties): April 2021

#1 - Lake (7.6%)

#3 - LaPorte (6%)

#9 - Starke (4.9%)

#12 - Porter (4.8%)

#19 - Newton (4.3%)

#24 - Jasper (4.2%)

#47 - Pulaski (3.4%)

Source: Indiana Department of Workforce Development, Research and Development, Local Area Unemployment Statistics

Labor Market Review EGR 1

April 2021 Labor Force Estimates (not seasonally adjusted)						
Area	Labor Force	Employed	Unemployed	Apr-21	Mar-21	Apr-20
U.S.	160,379,000	151,160,000	9,220,000	5.7%	6.2%	14.4%
IN	3,327,059	3,187,375	139,684	4.2%	4.6%	16.5%
Gary Metro Div	326,952	305,032	21,920	6.7%	6.8%	19.3%
MichCity-LaPorte MSA	46,819	43,991	2,828	6.0%	6.6%	20.2%
EGR 1	390,243	364,787	25,456	6.5%	6.7%	19.3%
Lake Co.	222,666	205,658	17,008	7.6%	7.6%	20.3%
Porter Co.	82,562	78,571	3,991	4.8%	5.2%	17.5%
LaPorte Co.	46,819	43,991	2,828	6.0%	6.6%	20.2%
Newton Co.	6,448	6,169	279	4.3%	4.9%	15.2%
Jasper Co.	15,276	14,634	642	4.2%	4.9%	15.7%
Starke Co.	9,936	9,453	483	4.9%	5.4%	18.7%
Pulaski Co.	6,536	6,311	225	3.4%	4.0%	14.2%
East Chicago	9,885	8,619	1,266	12.8%	12.7%	22.3%
Hammond	33,192	30,305	2,887	8.7%	8.7%	19.2%
Munster	11,018	10,566	452	4.1%	4.8%	14.3%
Dyer	8,273	7,958	315	3.8%	4.2%	15.7%
Schererville	15,289	14,522	767	5.0%	4.8%	17.4%
Crown Point	14,888	14,183	705	4.7%	5.6%	20.3%
Griffith	8,440	7,880	560	6.6%	6.1%	19.9%
Highland	11,793	11,164	629	5.3%	6.2%	19.5%
Gary	27,045	23,105	3,940	14.6%	13.6%	24.0%
Merrillville	16,668	15,084	1,584	9.5%	8.6%	22.3%
Hobart	14,195	13,121	1,074	7.6%	7.2%	24.8%
Lake Station	4,644	4,273	371	8.0%	10.4%	26.1%
Portage	17,270	16,196	1,074	6.2%	5.9%	21.0%
Chesterton	6,763	6,443	320	4.7%	4.9%	16.7%
Valparaiso	15,928	15,239	689	4.3%	5.2%	16.9%
Michigan City	12,595	11,587	1,008	8.0%	8.4%	24.2%
LaPorte	9,341	8,796	545	5.8%	6.8%	19.3%

Source: Indiana Department of Workforce Development, Research & Analysis, Local Area Unemployment Statistics | Unemployment Statistics Released:05/21 | Notes: The data displayed are presented as estimates only. The most recent month's data are always preliminary and are revised when the next month's data are released.

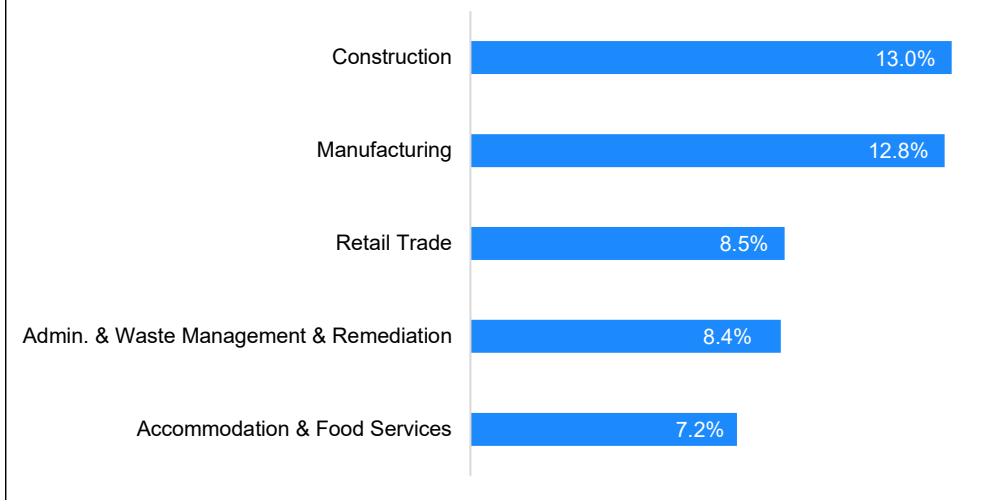
Statewide Average Weekly Hours & Earnings by Industry for April 2021

Industry	Avg. Earnings per hr	Avg. # of hours worked per week	Avg. Earnings per week
Construction	\$29.40	37.6	\$1,105.44
Manufacturing	\$21.12	43.2	\$912.38
Durable Goods	\$22.07	43.4	\$957.84
Fabricated Metal Product Manufacturing	\$20.79	40.1	\$833.68
Transportation Equipment Manufacturing	\$22.80	38.3	\$873.24
Non-Durable Goods	\$18.78	42.8	\$803.78
Retail Trade	\$16.77	30.3	\$508.13
Financial Activities	\$26.35	35.7	\$940.70
Health Care and Social Assistance	\$25.38	33.7	\$855.31
Accommodation and Food Services	\$13.76	22.2	\$305.47
Food Services and Drinking Places	\$13.61	22.0	\$299.42

Source: Indiana Department of Workforce Development, Current Employment Statistics

Percentage of Unemployment Claims for Top 5 Region 1 Industries April 2021

Distribution as a Percent of Total



Source: Indiana Department of Workforce Development, Research and Analysis

WARN Notices

WARN Notices for Region 1 for April 2021

Company	City	County	# affected	Notice Date

There are no WARN Notices for April 2021 for Region 1.

Significant WARN Notices for nearby locations

Company	City	County	# Affected	Notice Date

There are no WARN Notices for nearby locations

Source: Indiana Department of Workforce Development, WARN Notices | For information on WARN Act requirements, you may go to the U.S. Department of Labor Employment Training Administration Fact Sheet:

<https://www.doleta.gov/programs/factsheet/warn.htm>

Unemployment Claims: April 2021

Region 1

Initial Claims

04/03/21 - 1,695
04/10/21 - 13,209
04/17/21 - 8,110
04/24/21 - 2,950

Continued Claims

04/03/21 - 5,358
04/10/21 - 5,220
04/17/21 - 5,286
04/24/21 - 5,540

Total Claims

04/03/21 - 7,053
04/10/21 - 18,429
04/17/21 - 13,396
04/24/21 - 8,490

State of Indiana

Initial Claims

04/03/21 - 8,071
04/10/21 - 9,542
04/17/21 - 14,026
04/24/21 - 14,507

Continued Claims

04/03/21 - 57,103
04/10/21 - 58,333
04/17/21 - 59,616
04/24/21 - 64,342

Total Claims

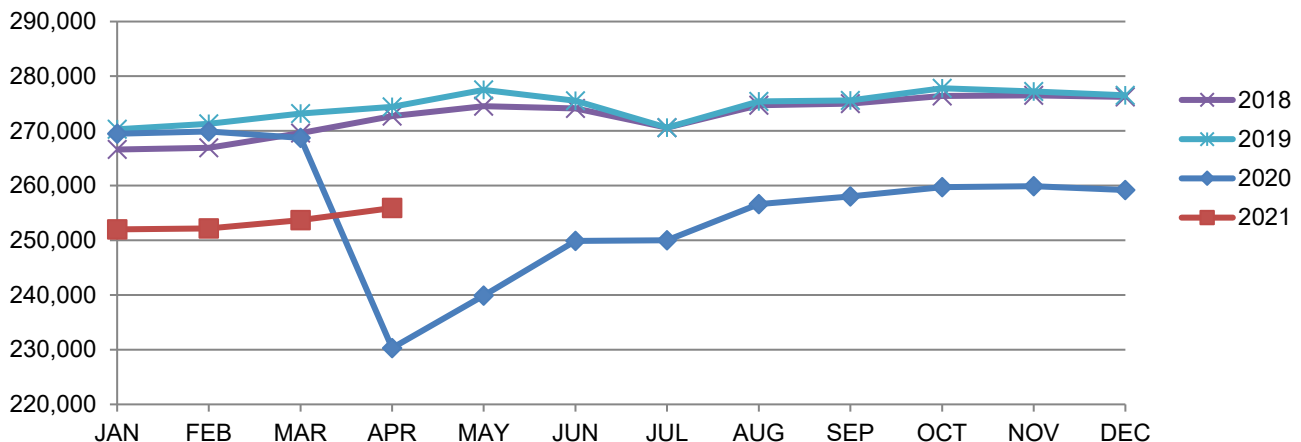
04/03/21 - 65,174
04/10/21 - 67,875
04/17/21 - 73,642
04/24/21 - 78,849

(D) Indicates one or more counties are excluded due to non-disclosure issues | Source: Indiana Department of Workforce Development, Research and Analysis

Gary Metropolitan Division							
Wage and Salaried Employment	April 2021			# Change	% Change	# Change	% Change
Industry	Apr-21	Mar-21	Apr-20	Mar-21 to Apr-21	Apr-20 to Apr-21		
Total Nonfarm	255,900	253,700	230,300	2,200	0.9%	25,600	11.1%
Total Private	224,700	222,500	199,300	2,200	1.0%	25,400	12.7%
Goods Producing	48,500	47,100	44,700	1,400	3.0%	3,800	8.5%
Service Providing	207,400	206,600	185,600	800	0.4%	21,800	11.8%
Private Service Providing	176,200	175,400	154,600	800	0.5%	21,600	14.0%
Mining and Logging	100	100	200	0	0.0%	-100	-50.0%
Mining, Logging and Construction	15,200	14,300	13,200	900	6.3%	2,000	15.2%
Construction	15,100	14,200	13,000	900	6.3%	2,100	16.2%
Manufacturing	33,300	32,800	31,500	500	1.5%	1,800	5.7%
Durable Goods	24,700	24,700	23,800	0	0.0%	900	3.8%
Trade, Transportation and Utilities	57,200	56,800	51,800	400	0.7%	5,400	10.4%
Wholesale Trade	8,800	8,900	8,700	-100	-1.1%	100	1.2%
Retail Trade	31,700	31,100	27,300	600	1.9%	4,400	16.1%
General Merchandise Stores	6,500	6,400	6,000	100	1.6%	500	8.3%
Other Gen Merch Stores	4,700	4,600	4,700	100	2.2%	0	0.0%
Transportation, Warehousing and Utilities	16,700	16,800	15,800	-100	-0.6%	900	5.7%
Information	1,600	1,600	1,700	0	0.0%	-100	-5.9%
Financial Activities	8,400	8,400	8,300	0	0.0%	100	1.2%
Professional and Business Services	22,700	22,900	22,300	-200	-0.9%	400	1.8%
Employment Services	3,200	3,300	2,900	-100	-3.0%	300	10.3%
Education and Health Services	46,200	46,400	44,000	-200	-0.4%	2,200	5.0%
Educational Services	4,600	4,600	4,200	0	0.0%	400	9.5%
Health Care and Social Assistance	41,600	41,800	39,800	-200	-0.5%	1,800	4.5%
General Medical and Surgical Hospitals	13,500	13,500	13,300	0	0.0%	200	1.5%
Leisure and Hospitality	30,100	29,400	19,000	700	2.4%	11,100	58.4%
Arts, Entertainment and Recreation	4,700	4,400	2,900	300	6.8%	1,800	62.1%
Food Services and Drinking Places	25,400	25,000	16,100	400	1.6%	9,300	57.8%
Other Services	10,000	9,900	7,500	100	1.0%	2,500	33.3%
Total Government	31,200	31,200	31,000	0	0.0%	200	0.7%
Federal Government	1,900	1,800	2,000	100	5.6%	-100	-5.0%
State Government	4,100	4,000	4,100	100	2.5%	0	0.0%
Local Government	25,200	25,400	24,900	-200	-0.8%	300	1.2%
Local Government Educational Services	14,700	14,800	14,200	-100	-0.7%	500	3.5%

Source: Indiana Dept of Workforce Development, Research and Analysis, Current Employment Statistics

Gary Metropolitan Division Employment Trends

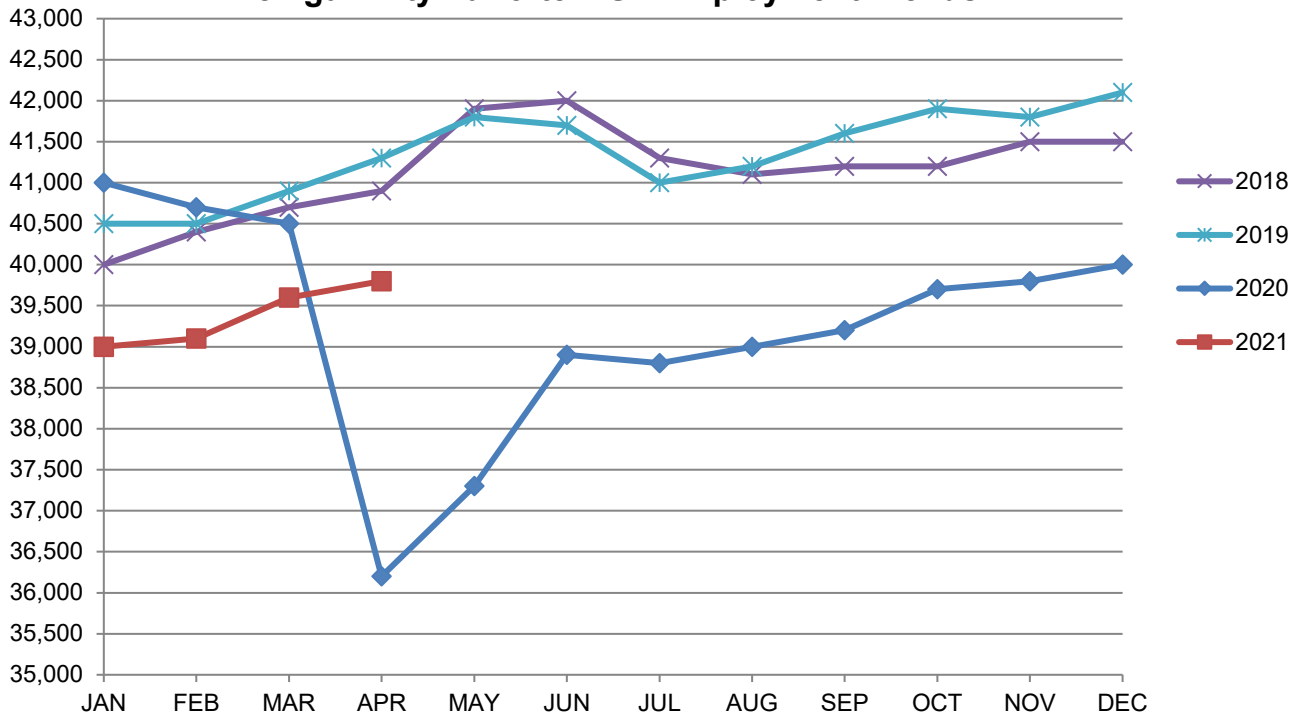


Source: Indiana Department of Workforce Development, Research & Analysis, Current Employment Statistics | Note: Historical data for the most recent 4 years (both seasonally adjusted and not seasonally adjusted) are revised near the beginning of each calendar year, prior to the release of January estimates for statewide data.

Michigan City-LaPorte MSA							
Wage and Salaried Employment	April 2021			# Change	% Change	# Change	% Change
Industry	Apr-21	Mar-21	Apr-20	Mar-21 to Apr-21	Apr-20 to Apr-21	Apr-20 to Apr-21	Apr-20 to Apr-21
Total Nonfarm	39,800	39,600	36,200	200	0.5%	3,600	9.9%
Total Private	33,700	33,400	29,900	300	0.9%	3,800	12.7%
Goods Producing	9,900	9,800	9,400	100	1.0%	500	5.3%
Service Providing	29,900	29,800	26,800	100	0.3%	3,100	11.6%
Private Service Providing	23,800	23,600	20,500	200	0.9%	3,300	16.1%
Mining, Logging and Construction	2,000	1,800	1,800	200	11.1%	200	11.1%
Manufacturing	7,900	8,000	7,600	-100	-1.3%	300	4.0%
Trade, Transportation & Utilities	8,400	8,400	7,100	0	0.0%	1,300	18.3%
Wholesale Trade	1,600	1,600	1,400	0	0.0%	200	14.3%
Retail Trade	4,900	4,900	4,100	0	0.0%	800	19.5%
Information	200	200	200	0	0.0%	0	0.0%
Financial Activities	1,200	1,200	1,200	0	0.0%	0	0.0%
Professional and Business Services	2,700	2,600	2,400	100	3.9%	300	12.5%
Education and Health Services	5,600	5,700	5,200	-100	-1.8%	400	7.7%
Leisure and Hospitality	4,600	4,400	3,500	200	4.6%	1,100	31.4%
Other Services	1,100	1,100	900	0	0.0%	200	22.2%
Total Government	6,100	6,200	6,300	-100	-1.6%	-200	-3.2%
Federal Government	200	200	200	0	0.0%	0	0.0%
State Government	1,900	1,900	2,000	0	0.0%	-100	-5.0%
Local Government	4,000	4,100	4,100	-100	-2.4%	-100	-2.4%
Local Government Educational Services	2,200	2,300	2,300	-100	-4.4%	-100	-4.4%

Source: Indiana Dept of Workforce Development, Research and Analysis, Current Employment Statistics

Michigan City-LaPorte MSA Employment Trends



Source: Indiana Department of Workforce Development, Research & Analysis, Current Employment Statistics | Note: Historical data for the most recent 4 years (both seasonally adjusted and not seasonally adjusted) are revised near the beginning of each calendar year, prior to the release of January estimates for statewide data.

Frequently Listed Jobs	
Top 20 job listings by number of openings in Region 1 in the past month	
Rank	Occupations
1	Counter Attendants, Cafeteria, Food Concession, and Coffee Shop
2	Social and Human Service Assistants
3	Nursing Assistants
4	Laborers and Freight, Stock, and Material Movers, Hand
5	Production Workers, All Other
6	Home Health Aides
7	Personal Care Aides
8	Assemblers and Fabricators, All Other
9	Registered Nurses
10	First-Line Supervisors of Food Preparation and Serving Workers
11	Licensed Practical and Licensed Vocational Nurses
12	Helpers--Production Workers
13	First-Line Supervisors of Production and Operating Workers
14	Janitors and Cleaners, Except Maids and Housekeeping Cleaners
15	First-Line Supervisors of Mechanics, Installers, and Repairers
16	Team Assemblers
17	Maintenance and Repair Workers, General
18	Continuous Mining Machine Operators
19	Industrial Engineers
20	Retail Salespersons

Source: Indiana Workforce Development, Indiana Career Connect

Applicant Pool	
Top 20 occupations desired by applicants on their resumes in the past 12 months	
Occupations	# of applicants
Production Workers, All Other	3,787
Helpers--Production Workers	3,741
Laborers and Freight, Stock, and Material Movers, Hand	2,898
Assemblers and Fabricators, All Other	2,797
Cashiers	2,438
Customer Service Representatives	2,086
Stock Clerks and Order Fillers	1,402
Office Clerks, General	1,332
Construction Laborers	1,154
Managers, All Other	1,150
Office and Administrative Support Workers, All Other	1,145
Retail Salespersons	1,130
Nursing Assistants	1,053
Janitors and Cleaners, Except Maids and Housekeeping Cleaners	1,032
Industrial Truck and Tractor Operators	1,022
Receptionists and Information Clerks	1,020
Welders, Cutters, Solderers, and Brazers	1,008
Maintenance and Repair Workers, General	965
Packers and Packagers, Hand	916
Executive Secretaries and Executive Administrative Assistants	901

Source: Indiana Workforce Development, Indiana Career Connect

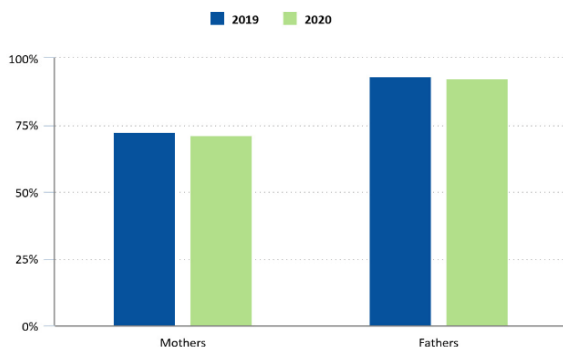
Consumer Price Index (CPI-U Change), Unadjusted Percent Change to April 2021 from						
CPI Item	Apr-20	Mar-21	Apr-20	Mar-21	Apr-20	Mar-21
	Chicago-Naperville-Elgin, IN-IL-WI		U.S. City		Midwest Region*	
All Items	4.6%	1.0%	4.2%	0.8%	4.9%	0.8%
Food & Beverages	3.5%	0.3%	2.3%	0.5%	2.1%	0.4%
Housing	3.8%	1.1%	2.6%	0.4%	3.4%	0.5%
Apparel	5.4%	-3.3%	1.9%	-0.1%	1.7%	-0.9%
Transportation	16.4%	3.4%	14.9%	3.1%	17.8%	3.3%
Medical Care	0.3%	-0.1%	1.5%	0.0%	1.9%	-0.4%
Recreation	4.7%	1.8%	2.1%	0.8%	2.7%	0.4%
Education & Communication	-0.7%	0.0%	1.7%	0.3%	1.5%	-0.1%
Other Goods & Services	0.0%	1.5%	2.7%	0.2%	1.9%	0.4%

*Midwest region = Midwest Urban Average. Midwest Region includes Illinois, Indiana, Iowa, Kansas, Michigan, Minnesota, Missouri, Nebraska, North Dakota, Ohio, South Dakota and Wisconsin | Source: U.S. Bureau of Labor Statistics

Labor force participation declines for mothers and fathers in 2020

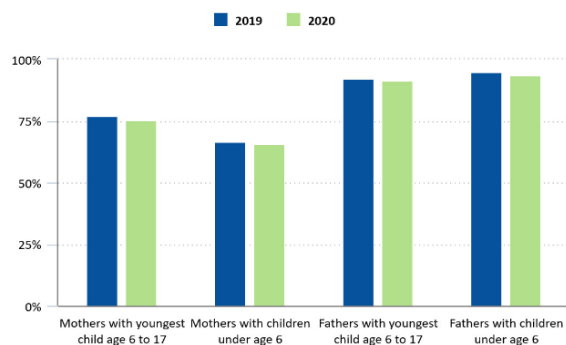
The labor force participation rate for mothers with children under the age of 18 was 71.2 percent in 2020, down from 72.3 percent in 2019. The participation rate for fathers with children under the age of 18, at 92.3 percent in 2020, also declined from the rate in 2019 (93.3 percent). This decline in labor force participation among parents, especially mothers, likely reflects not only pandemic-related job losses, but also the shift of many schools to distance learning and the temporary closure of many daycare facilities during the pandemic.

Labor force participation rates of mothers and fathers, 2019 and 2020



Source: U.S. Bureau of Labor Statistics.

Labor force participation rates of mothers and fathers, by age of youngest child, 2019 and 2020



Source: U.S. Bureau of Labor Statistics.

In 2020, mothers of older children remained more likely to participate in the labor force than mothers with younger children. The participation rate for mothers with children under the age of 6, at 65.8 percent, was lower than that of mothers whose youngest child was age 6 to 17, at 75.4 percent. By comparison, fathers with children under age 6 were more likely to participate in the labor force than those whose youngest child was age 6 to 17 (93.4 percent versus 91.4 percent).

These data are from the Current Population Survey. For more information, see "Employment Characteristics of Families — 2020." Parents are people with own children who are under age 18 living in the household. Own children are sons, daughters, step-children, or adopted children. Not included are nieces, nephews, grandchildren, other related or unrelated children, and children not living in the household.

Bureau of Labor Statistics, U.S. Department of Labor, The Economics Daily, Labor force participation declines for mothers and fathers in 2020 at <https://www.bls.gov/opub/ed/2021/labor-force-participation-declines-for-mothers-and-fathers-in-2020.htm> (visited May 04, 2021).

County Unemployment Rates April 2021



INDIANA
DEPARTMENT OF
WORKFORCE
DEVELOPMENT

Questions?

Please contact the DWD
Research and Analysis
Regional Labor Analyst
listed below:

Kathy Jaworski

Regional Labor Analyst
Research and Analysis

[Indiana Department of
Workforce Development](http://Indiana Department of Workforce Development)

219-841-6347

kjaworski@dwd.in.gov

