



HOOSIERS BY THE NUMBERS

Your premier source for labor market information for Indiana.

DWD

INDIANA DEPARTMENT OF
WORKFORCE
DEVELOPMENT

LABOR MARKET REVIEW



November 2024 Labor Market Review

Reported by: Jillian Gregory

Regional Workforce Analyst

[Email Jillian](#)

jgregory@dwd.in.gov

DWD

INDIANA DEPARTMENT OF
WORKFORCE
DEVELOPMENT

Economic Growth Region 9

Statistical Data Report for November 2024, Released January 2025

State Employment and Unemployment

Unemployment rates were higher in November in 6 states, lower in 1 state, and stable in 43 states and the District of Columbia, the U.S. Bureau of Labor Statistics reported. Twenty-five states and the district had jobless rate increases from a year earlier, 6 states had decreases, and 19 states had little change. The national unemployment rate changed little over the month at 4.2 percent but was 0.5 percentage point higher than in November 2023.

Nonfarm payroll employment increased in 4 states and the District of Columbia and was essentially unchanged in 46 states in November 2024. Over the year, nonfarm payroll employment increased in 33 states and was essentially unchanged in 17 states and the district. South Dakota had the lowest jobless rate in November, 1.9 percent. Nevada had the highest unemployment rate, 5.7 percent, followed by the District of Columbia, 5.6 percent. In total, 26 states had unemployment rates lower than the U.S. figure of 4.2 percent, 3 states and the district had higher rates, and 21 states had rates that were not appreciably different from that of the nation.

In November, six states had unemployment rate increases, the largest of which were in Alabama, Maine, and Mississippi (+0.2 percentage point each). Delaware had the only rate decrease (-0.1 percentage point). Forty-three states and the District of Columbia had jobless rates that were not notably different from those of a month earlier, though some had changes that were at least as large numerically as the significant changes.



Economic Growth Region (EGR) 9

Bartholomew, Dearborn, Decatur, Franklin, Jackson, Jefferson, Jennings, Ohio, Ripley, and Switzerland Counties

November 2024 Labor Force Estimates (not seasonally adjusted)						
Area	Labor Force	Employed	Unemployed	Nov-24	Oct-24	Nov-23
U.S.	168,164,000	161,456,000	6,708,000	4.0%	3.9%	3.5%
IN	3,448,603	3,303,234	145,369	4.2%	4.0%	3.2%
EGR 9	168,680	162,234	6,446	3.8%	3.6%	2.9%
Columbus MSA	44,299	42,676	1,623	3.7%	3.5%	2.8%
Bartholomew Co.	44,299	42,676	1,623	3.7%	3.5%	2.8%
Dearborn Co.	26,121	25,092	1,029	3.9%	3.7%	3.0%
Decatur Co.	14,445	13,928	517	3.6%	3.6%	2.6%
Franklin Co.	10,600	10,156	444	4.2%	3.7%	2.9%
Jackson Co.	23,078	22,282	796	3.4%	3.3%	2.7%
Jefferson Co.	15,266	14,660	606	4.0%	3.8%	2.9%
Jennings Co.	13,890	13,320	570	4.1%	3.8%	3.0%
Ohio Co.	3,226	3,113	113	3.5%	3.5%	3.0%
Ripley Co.	13,099	12,552	547	4.2%	4.0%	3.3%
Switzerland Co.	4,656	4,455	201	4.3%	4.0%	3.2%
Batesville	3,356	3,241	115	3.4%	3.3%	2.7%
Brookville	1,013	967	46	4.5%	4.1%	3.9%
Columbus	25,377	24,401	976	3.8%	3.6%	2.9%
Greensburg	6,386	6,146	240	3.8%	3.7%	2.8%
Lawrenceburg	2,042	1,894	148	7.2%	6.8%	4.8%
Madison	5,514	5,297	217	3.9%	3.9%	3.1%
North Vernon	2,974	2,823	151	5.1%	4.8%	3.4%
Seymour	10,473	10,110	363	3.5%	3.3%	2.6%

Unemployment Rates by State (seasonally adjusted): November 2024

U.S. - 4.2%

Illinois - 5.3%

Indiana - 4.4%

Kentucky - 5.1%

Michigan - 4.8%

Ohio - 4.3%

Source: U.S. Department of Labor, Bureau of Labor Statistics

Unemployment Rank by County (of 92 counties): November 2024

#33 - Switzerland (4.3%)

#36 - Franklin (4.2%)

#39 - Ripley (4.2%)

#42 - Jennings (4.1%)

#49 - Jefferson (4%)

#55 - Dearborn (3.9%)

#63 - Bartholomew (3.7%)

#69 - Decatur (3.6%)

#83 - Ohio (3.5%)

#86 - Jackson (3.4%)

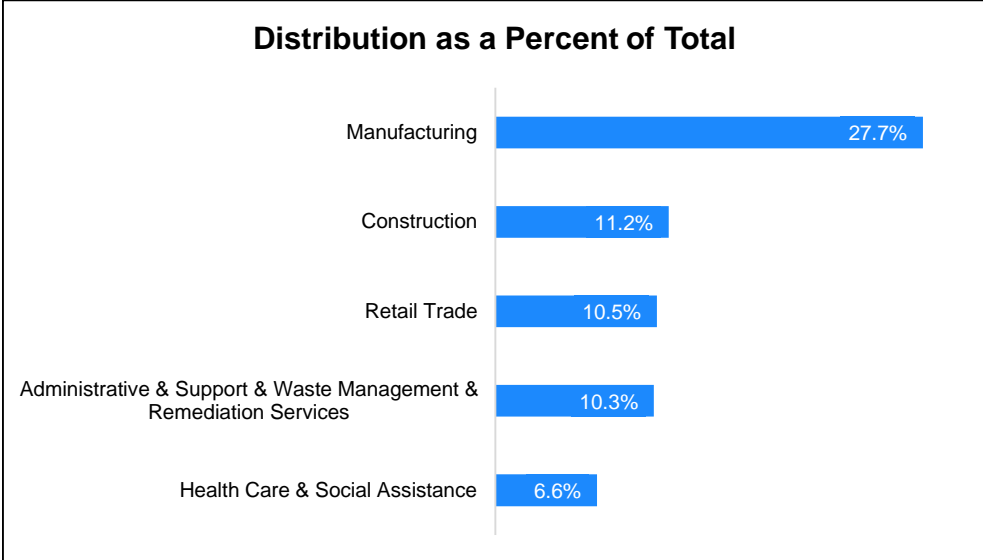
Source: Indiana Department of Workforce Development, Research and Development, Local Area Unemployment Statistics

Source: Indiana Department of Workforce Development, Research & Analysis, Local Area Unemployment Statistics | Unemployment Statistics Released: 12/24 | Notes: The data displayed are presented as estimates only. The most recent month's data are always preliminary and are revised when the next month's data are released.

Consumer Price Index (CPI-U Change), Unadjusted Percent Change to November 2024 from				
CPI Item	Nov-23	Oct-24	Nov-23	Oct-24
	U.S. City		Midwest Region*	
All Items	2.7%	-0.1%	2.6%	-0.1%
Food & Beverages	2.3%	0.1%	2.3%	0.1%
Housing	4.1%	0.2%	4.7%	0.2%
Apparel	1.1%	-2.7%	2.4%	-4.3%
Transportation	0.5%	-0.5%	-0.9%	-0.6%
Medical Care	3.1%	0.2%	1.7%	0.1%
Recreation	1.5%	0.2%	1.7%	0.5%
Education & Communication	0.7%	-0.5%	-0.3%	-0.6%
Other Goods & Services	3.4%	0.3%	5.4%	0.2%

*Midwest region = Midwest Urban Average. Midwest Region includes Illinois, Indiana, Iowa, Kansas, Michigan, Minnesota, Missouri, Nebraska, North Dakota, Ohio, South Dakota and Wisconsin | Source: U.S. Bureau of Labor Statistics

Percentage of Unemployment Claims for Top 5 Region 9 Industries November 2024



Source: Indiana Department of Workforce Development, Research and Analysis

WARN Notices

WARN Notices for Region 9 for November 2024				
Company	City	County	# of workers affected	Notice Date

There are no WARN Notices for November 2024 for EGR 9.

Source: Indiana Department of Workforce Development, WARN Notices | For information on WARN Act requirements, you may go to the U.S. Department of Labor Employment Training Administration Fact Sheet:

<https://www.doleta.gov/programs/factsht/warn.htm>

Unemployment Claims: November 2024

Region 9

Initial Claims

11/02/24 - 70(D)
 11/09/24 - 106(D)
 11/16/24 - 51(D)
 11/23/24 - 99(D)
 11/30/24 - 61(D)

Continued Claims

11/02/24 - 503
 11/09/24 - 509
 11/16/24 - 503
 11/23/24 - 557
 11/30/24 - 624

Total Claims

11/02/24 - 573
 11/09/24 - 615
 11/16/24 - 554
 11/23/24 - 656
 11/30/24 - 685

State of Indiana

Initial Claims

11/02/24 - 2,979
 11/09/24 - 4,047
 11/16/24 - 2,926
 11/23/24 - 3,235
 11/30/24 - 2,883

Continued Claims

11/02/24 - 22,404
 11/09/24 - 21,358
 11/16/24 - 20,923
 11/23/24 - 20,931
 11/30/24 - 24,224

Total Claims

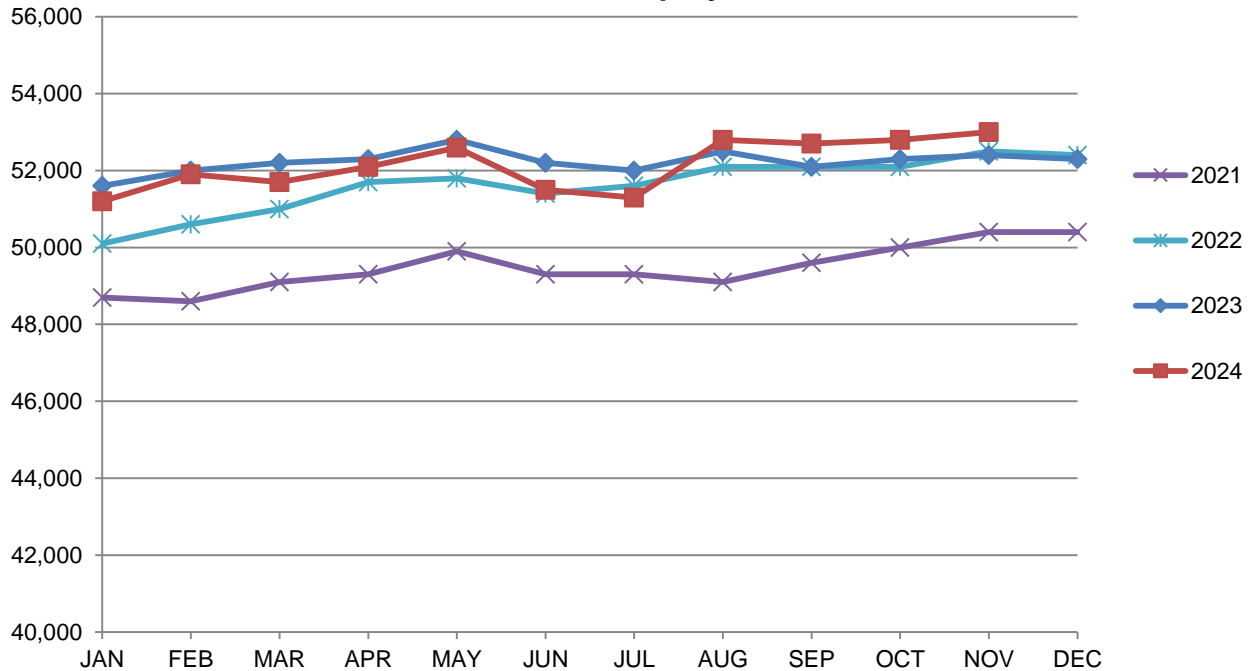
11/02/24 - 25,383
 11/09/24 - 25,405
 11/16/24 - 23,849
 11/23/24 - 24,166
 11/30/24 - 27,107

(D) indicates item is affected by non-disclosure issues relating to industry or ownership status | *Numbers subject to weekly revision | Source: Indiana Department of Workforce Development, Research and Analysis

Columbus MSA							
Wage and Salaried Employment	November 2024			# Change	% Change	# Change	% Change
Industry	Nov-24	Oct-24	Nov-23	Oct-24 to Nov-24	Nov-23 to Nov-24		
Total Nonfarm	53,000	52,800	52,400	200	0.4%	600	1.2%
Total Private	46,500	46,500	46,100	0	0.0%	400	0.9%
Goods Producing	21,200	21,200	21,100	0	0.0%	100	0.5%
Service-Providing	31,800	31,600	31,300	200	0.6%	500	1.6%
Private Service Providing	25,300	25,300	25,000	0	0.0%	300	1.2%
Mining, Logging and Construction	1,800	1,900	1,800	-100	-5.3%	0	0.0%
Manufacturing	19,400	19,300	19,300	100	0.5%	100	0.5%
Durable Goods	17,200	17,200	17,300	0	0.0%	-100	-0.6%
Trade, Transportation, and Utilities	7,800	7,700	7,700	100	1.3%	100	1.3%
Retail Trade	4,900	4,700	4,900	200	4.3%	0	0.0%
Information	300	300	300	0	0.0%	0	0.0%
Financial Activities	1,600	1,600	1,600	0	0.0%	0	0.0%
Professional and Business Services	5,000	5,100	5,000	-100	-2.0%	0	0.0%
Education and Health Services	4,900	4,900	4,800	0	0.0%	100	2.1%
Leisure and Hospitality	4,300	4,300	4,200	0	0.0%	100	2.4%
Other Services	1,400	1,400	1,400	0	0.0%	0	0.0%
Total Government	6,500	6,300	6,300	200	3.2%	200	3.2%
Federal Government	200	200	200	0	0.0%	0	0.0%
State Government	1,000	1,000	900	0	0.0%	100	11.1%
Local Government	5,300	5,100	5,200	200	3.9%	100	1.9%
Local Government Educational Services	2,100	2,000	2,100	100	5.0%	0	0.0%

Source: Indiana Dept of Workforce Development, Research and Analysis, Current Employment Statistics

Columbus MSA Employment Trends



Source: Indiana Department of Workforce Development, Research & Analysis, Current Employment Statistics | Note: Historical data for the most recent 4 years (both seasonally adjusted and not seasonally adjusted) are revised near the beginning of each calendar year, prior to the release of January estimates for statewide data.

Frequently Listed Jobs	
Top 20 job listings in Region 9 in the past month	
Rank	Occupations
1	Landscaping and Groundskeeping Workers
2	Personal Care Aides
3	Registered Nurses
4	Licensed Practical and Licensed Vocational Nurses
5	Nursing Assistants
6	Occupational Therapists
7	Production Workers, All Other
8	Customer Service Representatives
9	Loan Officers
10	Merchandise Displayers and Window Trimmers
11	Occupational Therapy Assistants
12	Speech-Language Pathologists
13	Cooks, All Other
14	Farmworkers, Farm, Ranch, and Aquacultural Animals
15	Food Preparation Workers
16	Medical and Health Services Managers
17	Office and Administrative Support Workers, All Other
18	Physical Therapist Assistants
19	Preschool Teachers, Except Special Education
20	Tellers

Applicant Pool	
Top 20 occupations desired by applicants on their resumes in the past 12 months	
Occupations	# of Applicants
Production Workers, All Other	390
Assemblers and Fabricators, All Other	267
Helpers--Production Workers	162
Customer Service Representatives	141
Laborers and Freight, Stock, and Material Movers, Hand	134
Cashiers	126
Heavy and Tractor-Trailer Truck Drivers	123
Office Clerks, General	99
Industrial Truck and Tractor Operators	97
Construction Laborers	94
Extraction Workers, All Other	92
Office and Administrative Support Workers, All Other	88
Managers, All Other	83
First-Line Supervisors of Production and Operating Workers	79
Inspectors, Testers, Sorters, Samplers, and Weighers	67
Secretaries and Administrative Assistants, Except Legal, Medical, and Executive	67
Construction and Related Workers, All Other	66
Retail Salespersons	66
Electrical and Electronic Equipment Assemblers	59
Maintenance and Repair Workers, General	57

BREAKDOWN

November Indiana Labor Force

Released December 20, 2024



Total Population 6,862,199



Labor Force (Age 16+)
3,442,250



Not in the Labor Force (Age 16+)
2,003,200

Employed
3,289,449

Source: Local Area Unemployment Statistics, November 2024, Bureau of Labor Statistics

Unemployed (Seeking)
152,801

Do Not Want a Job
1,890,000

Source: Local Area Unemployment Statistics, November 2024, Bureau of Labor Statistics

Want a Job (Not Seeking)
113,200

Want a Job (Available to Work Now)
35,100

Potential Workers

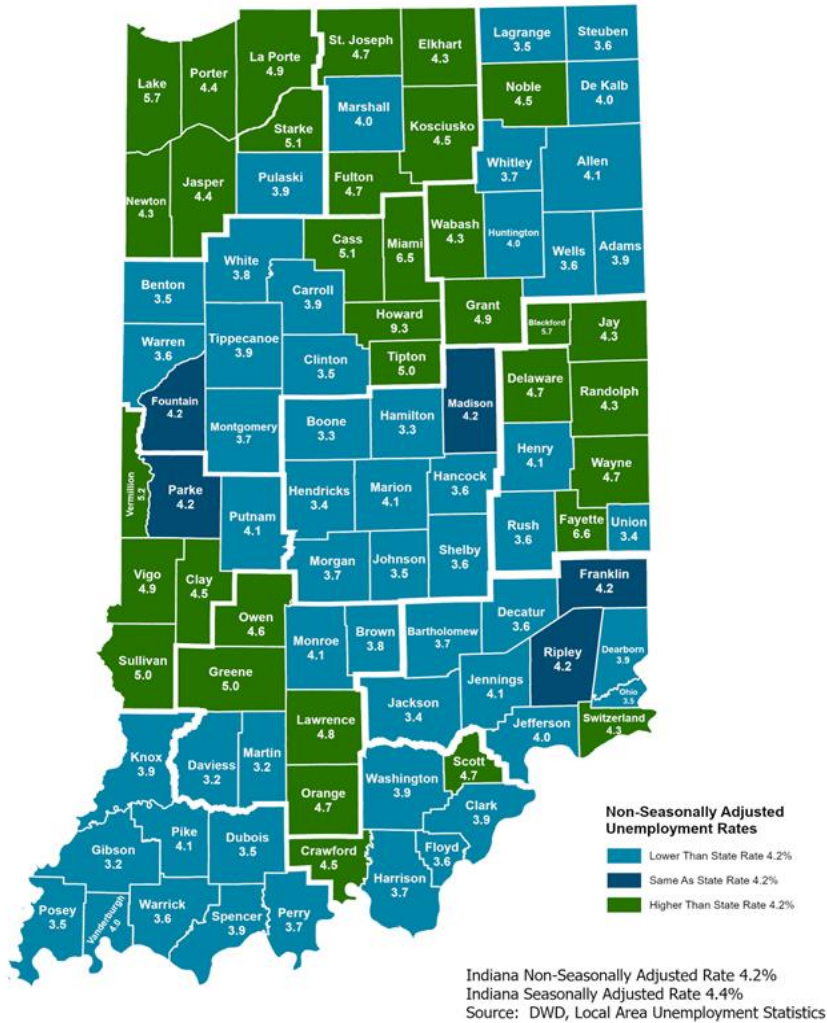
(Unemployed and Seeking a Job + Not in the Labor Force but Want a Job/Available to Work Now)

187,901

More about the US Bureau of Labor Statistics data sources used within:
Local Area Unemployment Statistics (LAUS): Captures Indiana's labor force which includes those currently employed and those who are unemployed and actively seeking work.
Current Population Survey (CPS): Captures individuals not participating in Indiana's labor force. This set includes non-participants that do not want a job (i.e. retirees and students) and those that want a job, but are not actively seeking work.
U.S. Census Bureau, Indiana Population 2023.

Resource: Notes on Using Current Population Survey (CPS) Subnational Data and Differences Between CPS and LAUS Estimates

County Unemployment Rates November 2024



Questions?

Please contact the DWD Research and Analysis Regional Labor Analyst listed below:

Jillian A. Gregory
 Regional Labor Analyst
 Research and Analysis

[Indiana Department of Workforce Development](https://www.in.gov/dwd/)
jgregory@dwd.in.gov