

Economic Growth Region 9

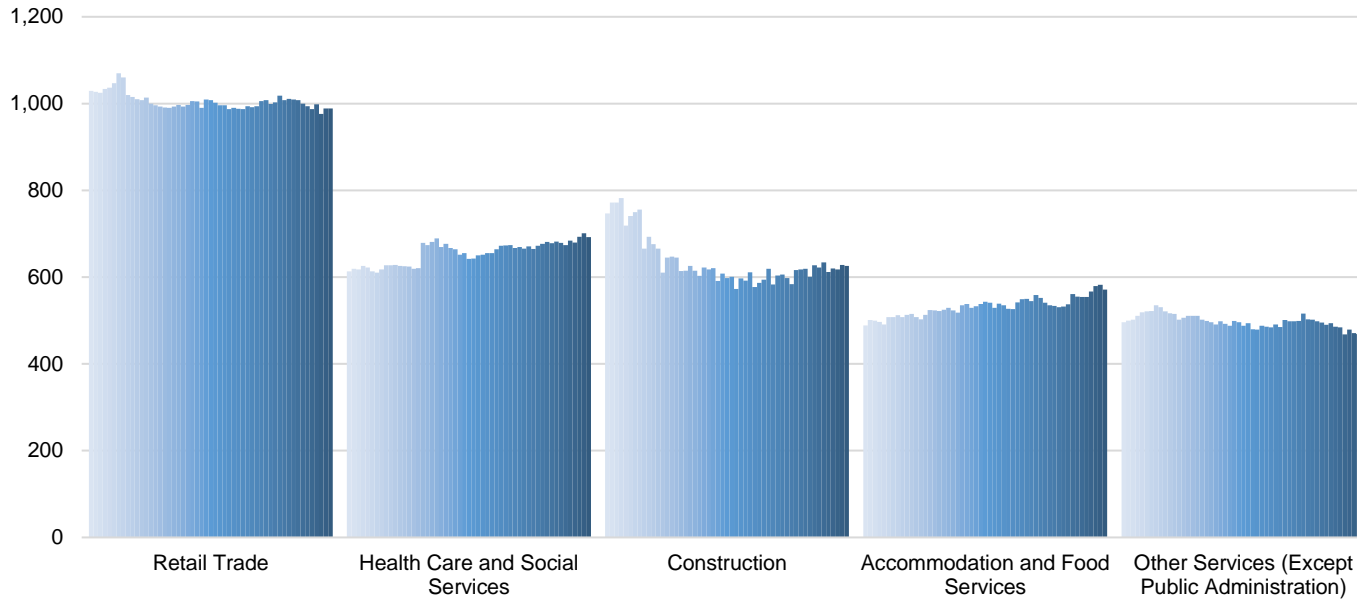
Bartholomew, Dearborn, Decatur, Franklin, Jackson, Jefferson, Jennings, Ohio, Ripley, and Switzerland Counties

Industry	Jobs	Previous Year	Establishments	Previous Year	Average Weekly Wage	Previous Year
Total	141,825	↑ 0.31%	6,545	↑ 0.49%	\$990	↑ 2.06%
Accommodation and Food Services	11,047	↓ -0.17%	571	↑ 3.07%	\$297	↑ 4.95%
Admin. & Support & Waste Mgt. & Rem. Services*	5,621	↓ -7.63%	264	↓ -0.38%	\$637	↑ 1.76%
Agriculture, Forestry, Fishing and Hunting*	391	↓ -3.22%	93	↓ -6.06%	\$628	↑ 4.32%
Arts, Entertainment, and Recreation*	2,150	↓ -5.12%	77	↓ -11.49%	\$510	↑ 3.03%
Construction*	4,832	↑ 4.50%	626	↑ 2.29%	\$942	↑ 4.43%
Educational Services*	8,910	↑ 1.31%	133	↑ 1.53%	\$701	↑ 2.04%
Finance and Insurance	2,803	↑ 0.25%	413	↓ -0.24%	\$1,366	↑ 4.83%
Health Care and Social Services	16,523	↑ 0.08%	692	↑ 1.17%	\$906	↑ 6.21%
Information*	1,071	↓ -2.37%	84	↑ 6.33%	\$763	↑ 4.52%
Management of Companies and Enterprises*	2,182	↓ -1.45%	50	↓ -1.96%	\$1,863	↑ 8.95%
Manufacturing	42,786	↑ 1.43%	473	↑ 0.42%	\$1,487	↓ -1.39%
Mining*	19	↑ 11.76%	16	↑ 6.67%	\$610	↑ 14.23%
Other Services (Except Public Administration)	2,709	↑ 0.30%	466	↓ -0.43%	\$499	↑ 5.50%
Professional, Scientific, and Technical Services*	3,190	↑ 0.47%	436	↑ 0.23%	\$1,052	↓ -0.75%
Public Administration	5,522	↑ 0.02%	247	↑ 5.11%	\$783	↑ 3.03%
Real Estate and Rental and Leasing*	801	↓ -3.03%	238	↑ 0.85%	\$680	↑ 10.39%
Retail Trade	14,307	↓ -0.53%	989	↑ 0.20%	\$534	↑ 5.95%
Transportation & Warehousing*	5,649	↓ -3.25%	318	↓ -1.55%	\$964	↑ 11.96%
Utilities*	601	↓ -0.83%	61	↑ 1.67%	\$1,670	↑ 1.83%
Wholesale Trade*	3,907	↑ 3.14%	298	↓ -2.93%	\$1,316	↓ -3.80%

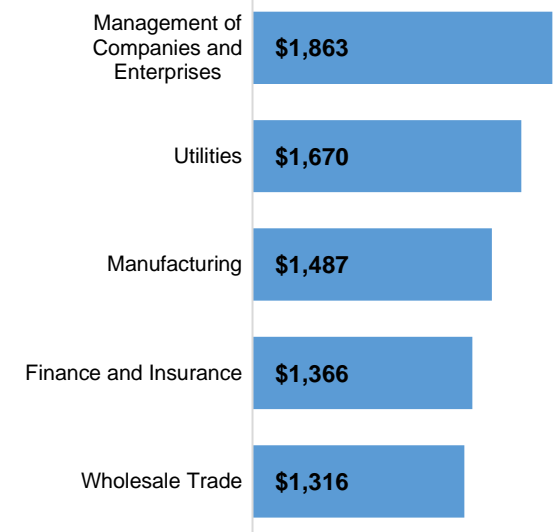
* These industries exclude county data (jobs and wages) that are not available due to non-disclosure requirements.

D = This item is not available due to non-disclosure requirements.

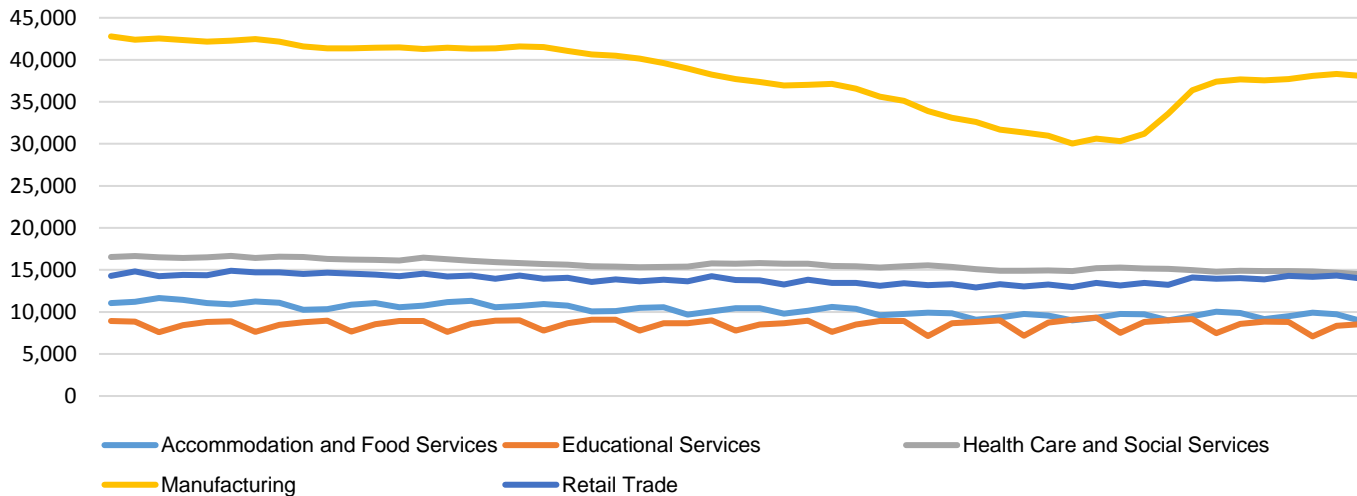
Historic Trend of Top 5 Largest Industries by Establishments
1Q 2007 - 1Q 2020



Top 5 Paying Industries by
Average Weekly Wage
1Q 2020



Historic Trend of Top 5 Largest Industries by Jobs
1Q 2007 - 1Q 2020



Source:

Quarterly Census of Employment and Wages,
Indiana Dept. of Workforce Development

For more information, contact:

Jillian Gregory
Regional Workforce Analyst
(812) 537-2485
jgregory@dwd.in.gov



INDIANA
DEPARTMENT OF
WORKFORCE
DEVELOPMENT