



December 2019 Labor Market Review

Reported by: **Cassie Janes**

Regional Workforce Analyst
[Email Cassie](#)
cjanes@dwd.in.gov

Tel: 765-454-4760

LABOR MARKET REVIEW

Economic Growth Region 8

Statistical Data Report for December 2019, Released February 2020

State Employment and Unemployment

Unemployment rates were lower in February in 4 states and stable in 46 states and the District of Columbia, the U.S. Bureau of Labor Statistics reported. Seven states had jobless rate decreases from a year earlier, 2 states had increases, and 41 states and the District had little or no change. The national unemployment rate declined to 3.8 percent over the month and was 0.3 percentage point lower than in February 2018.

Nonfarm payroll employment increased in 2 states in February 2019 and was essentially unchanged in 48 states and the District of Columbia. Over the year, 22 states added nonfarm payroll jobs and 28 states and the District were essentially unchanged.

Iowa, New Hampshire, North Dakota, and Vermont had the lowest unemployment rates in February, 2.4 percent each. The rates in Alabama (3.7 percent), North Dakota (2.4 percent), Tennessee (3.2 percent), and Vermont (2.4 percent) set new series lows. (All state series begin in 1976.) Alaska had the highest jobless rate, 6.5 percent. In total, 16 states had unemployment rates lower than the U.S. figure of 3.8 percent, 9 states and the District of Columbia had higher rates, and 25 states had rates that were not appreciably different from that of the nation.



Economic Growth Region (EGR) 8

Brown, Daviess, Greene, Lawrence, Martin, Monroe, Orange and Owen Counties

Unemployment Rates by State (seasonally adjusted): December 2019

U.S. - 3.5%

Illinois - 3.7%

Indiana - 3.2%

Kentucky - 4.3%

Michigan - 3.9%

Ohio - 4.2%

Source: U.S. Department of Labor, Bureau of Labor Statistics

Unemployment Rank by County (of 92 counties): December 2019

#10 - Greene (3.8%)

#20 - Owen (3.5%)

#24 - Lawrence (3.4%)

#37 - Orange (3.1%)

#62 - Monroe (2.7%)

#68 - Brown (2.6%)

#77 - Daviess (2.4%)

#90 - Martin (2.1%)

Source: Indiana Department of Workforce Development, Research and Development, Local Area Unemployment Statistics

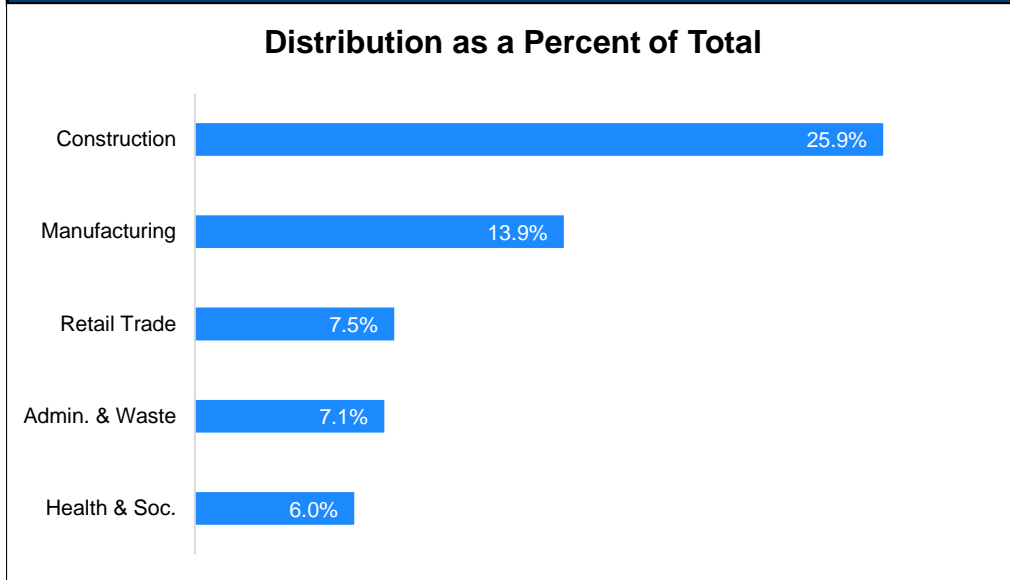
December 2019 Labor Force Estimates (not seasonally adjusted)						
Area	Labor Force	Employed	Unemployed	Dec-19	Nov-19	Dec-18
U.S.	164,007,000	158,504,000	5,503,000	3.4%	3.3%	3.7%
IN	3,352,305	3,250,841	101,464	3.0%	3.2%	3.4%
EGR 8	152,222	147,793	4,429	2.9%	3.2%	3.4%
Bloomington MSA	79,298	77,081	2,217	2.8%	3.2%	3.4%
Brown Co.	7,561	7,366	195	2.6%	2.7%	3.0%
Daviess Co.	16,703	16,309	394	2.4%	2.5%	2.7%
Greene Co.	13,622	13,100	522	3.8%	3.8%	4.6%
Lawrence Co.	21,092	20,371	721	3.4%	3.6%	3.6%
Martin Co.	5,354	5,239	115	2.1%	2.4%	2.7%
Monroe Co.	69,918	68,032	1,886	2.7%	3.1%	3.3%
Orange Co.	8,592	8,327	265	3.1%	3.5%	3.4%
Owen Co.	9,380	9,049	331	3.5%	3.6%	4.2%
Bloomington	38,315	37,199	1,116	2.9%	3.6%	3.5%

Source: Indiana Department of Workforce Development, Research & Analysis, Local Area Unemployment Statistics | Unemployment Statistics Released: 01/20 | Notes: The data displayed are presented as estimates only. The most recent month's data are always preliminary and are revised when the next month's data are released.

Consumer Price Index (CPI-U Change), Unadjusted Percent Change to December 2019 from				
CPI Item	Dec-18	Nov-19	Dec-18	Nov-19
	U.S. City		Midwest Region*	
All Items	2.3%	-0.1%	2.3%	0.0%
Food & Beverages	1.7%	0.1%	1.8%	0.1%
Housing	2.6%	0.1%	2.3%	0.3%
Apparel	-1.2%	-3.2%	-1.4%	-4.0%
Transportation	1.9%	-0.6%	3.1%	-0.1%
Medical Care	4.6%	0.4%	3.6%	-0.4%
Recreation	1.5%	0.1%	2.0%	0.2%
Education & Communication	1.4%	-0.1%	0.8%	0.0%
Other Goods & Services	2.3%	-0.2%	2.4%	-0.3%

*Midwest region = Midwest Urban Average. Midwest Region includes Illinois, Indiana, Iowa, Kansas, Michigan, Minnesota, Missouri, Nebraska, North Dakota, Ohio, South Dakota and Wisconsin | Source: U.S. Bureau of Labor Statistics

Percentage of Unemployment Claims for Top 5 Region 8 Industries December 2019



Source: Indiana Department of Workforce Development, Research and Analysis

WARN Notices

WARN Notices for Region 8 for December 2019				
Company	City	County	# of workers affected	Notice Date

There are no WARN Notices for December 2019 for EGR 8.

Source: Indiana Department of Workforce Development, WARN Notices | For information on WARN Act requirements, you may go to the U.S. Department of Labor Employment Training Administration Fact Sheet:

<https://www.dolela.gov/programs/factsht/warn.htm>

Unemployment Claims: December 2019

Region 8

Initial Claims

12/07/19 - 90(D)

12/14/19 - 123(D)

12/21/19 - 145(D)

12/28/19 - 142(D)

Continued Claims

12/07/19 - 508

12/14/19 - 586

12/21/19 - 624

12/28/19 - 742

Total Claims

12/07/19 - 598

12/14/19 - 709

12/21/19 - 769

12/28/19 - 884

State of Indiana

Initial Claims

12/07/19 - 3,819

12/14/19 - 3,256

12/21/19 - 3,733

12/28/19 - 3,232

Continued Claims

12/07/19 - 13,763

12/14/19 - 15,184

12/21/19 - 16,121

12/28/19 - 18,423

Total Claims

12/07/19 - 17,582

12/14/19 - 18,440

12/21/19 - 19,854

12/28/19 - 21,655

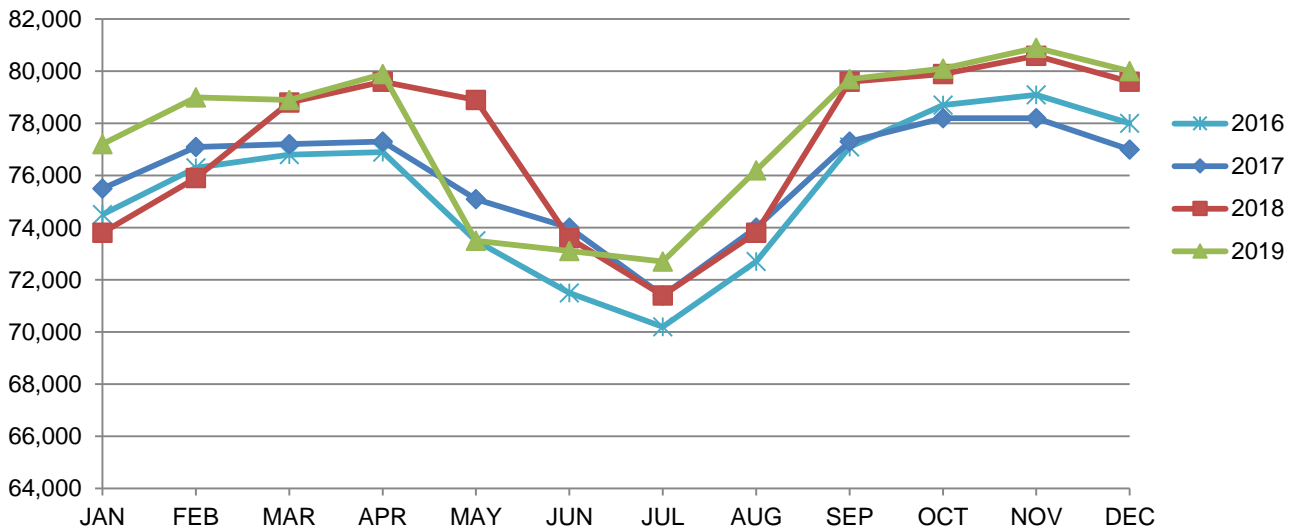
(D) indicates item is affected by non-disclosure issues relating to industry or ownership status |

Source: Indiana Department of Workforce Development, Research and Development

Bloomington MSA							
Wage and Salaried Employment	December 2019			# Change	% Change	# Change	% Change
Industry	Dec-19	Nov-19	Dec-18	Nov-19 to Dec-19	Dec-18 to Dec-19		
Total Nonfarm	80,000	80,900	79,600	-900	-1.1%	400	0.5%
Total Private	53,100	53,600	52,600	-500	-0.9%	500	1.0%
Goods Producing	11,800	11,900	11,700	-100	-0.8%	100	0.9%
Service-Providing	68,200	69,000	67,900	-800	-1.2%	300	0.4%
Private Service Providing	41,300	41,700	40,900	-400	-1.0%	400	1.0%
Mining, Logging and Construction	2,800	2,900	2,700	-100	-3.5%	100	3.7%
Manufacturing	9,000	9,000	9,000	0	0.0%	0	0.0%
Durable Goods	6,300	6,300	6,300	0	0.0%	0	0.0%
Trade, Transportation, and Utilities	10,800	10,800	10,400	0	0.0%	400	3.9%
Wholesale Trade	1,700	1,800	1,700	-100	-5.6%	0	0.0%
Retail Trade	7,700	7,600	7,300	100	1.3%	400	5.5%
Transportation, Warehousing, and Utilities	1,400	1,400	1,400	0	0.0%	0	0.0%
Information	1,000	1,000	1,000	0	0.0%	0	0.0%
Financial Activities	3,100	3,100	3,000	0	0.0%	100	3.3%
Professional and Business Services	5,400	5,500	5,300	-100	-1.8%	100	1.9%
Education and Health Services	10,200	10,300	10,200	-100	-1.0%	0	0.0%
Leisure and Hospitality	8,600	8,800	8,700	-200	-2.3%	-100	-1.2%
Other Services	2,200	2,200	2,300	0	0.0%	-100	-4.4%
Total Government	26,900	27,300	27,000	-400	-1.5%	-100	-0.4%
Federal Government	300	300	400	0	0.0%	-100	-25.0%
State Government	21,400	21,700	21,400	-300	-1.4%	0	0.0%
Local Government	5,200	5,300	5,200	-100	-1.9%	0	0.0%
Local Government Educational Services	2,600	2,600	2,600	0	0.0%	0	0.0%
Local Government excluding Educational Services	2,600	2,700	2,600	-100	-3.7%	0	0.0%

Source: Indiana Dept of Workforce Development, Research and Analysis, Current Employment Statistics

Bloomington MSA Employment Trends



Source: Indiana Department of Workforce Development, Research & Analysis, Current Employment Statistics | Note: Historical data for the most recent 4 years (both seasonally adjusted and not seasonally adjusted) are revised near the beginning of each calendar year, prior to the release of January estimates for statewide data.

Frequently Listed Jobs	
Top 20 job listings in Region 8 in the past month	
Rank	Occupations
1	Healthcare Practitioners and Technical Workers, All Other
2	Registered Nurses
3	Engineers, All Other
4	Customer Service Representatives
5	Correctional Officers and Jailers
6	Heavy and Tractor-Trailer Truck Drivers
7	Production Workers, All Other
8	Retail Salespersons
9	Combined Food Preparation and Serving Workers, Including Fast Food
10	Social and Human Service Assistants
11	Counter Attendants, Cafeteria, Food Concession, and Coffee Shop
12	Licensed Practical and Licensed Vocational Nurses
13	First-Line Supervisors of Transportation and Material-Moving Machine and Vehicle Operators
14	Therapists, All Other
15	First-Line Supervisors of Office and Administrative Support Workers
16	Parts Salespersons
17	Stock Clerks- Stockroom, Warehouse, or Storage Yard
18	Teacher Assistants
19	Managers, All Other
20	Mental Health and Substance Abuse Social Workers

Source: Indiana Workforce Development, Indiana Career Connect

Applicant Pool	
Top 20 occupations desired by applicants on their resumes in the past 12 months	
Occupations	# of applicants
Assemblers and Fabricators, All Other	256
Production Workers, All Other	228
Helpers--Production Workers	139
Cashiers	128
Customer Service Representatives	115
Laborers and Freight, Stock, and Material Movers, Hand	114
Office Clerks, General	94
Office and Administrative Support Workers, All Other	87
Stock Clerks and Order Fillers	82
Nursing Assistants	82
Heavy and Tractor-Trailer Truck Drivers	79
Extraction Workers, All Other	72
Construction Laborers	71
Retail Salespersons	70
Janitors and Cleaners, Except Maids and Housekeeping Cleaners	69
Maintenance and Repair Workers, General	68
Managers, All Other	67
Welders, Cutters, Solderers, and Brazers	63
Combined Food Preparation and Serving Workers, Including Fast Food	59
Receptionists and Information Clerks	57

Source: Indiana Workforce Development, Indiana Career Connect



Data on display

Strong growth projected in fitness and recreational sports centers, 2018–28

Elka Torpey | January 2020

If you've resolved to get in shape this year, you might seek out an exercise facility to help accomplish that goal. That's good news for employment in the fitness and recreational sports centers industry. In fact, the U.S. Bureau of Labor Statistics (BLS) projects employment for most occupations in these centers to grow at least 15 percent, much faster than the average for all occupations in all industries, through 2028. As the chart shows, [fitness trainers and aerobics instructors](#) is projected to add the most jobs in these centers: about 31,100 over the 2018 to 2028 decade. This occupation also had the most employment in the industry in 2018, accounting for nearly 1 in 3 jobs.

Chart 1. Occupations with the most new jobs in fitness and recreational sports centers, projected 2018–28



[General and operations managers](#) in fitness and recreational sports centers had a median hourly wage of \$33.04 in 2018, the highest for the occupations shown—and more than triple that of [lifeguards, ski patrol, and other recreational protective service workers](#), which at \$10.35 had the lowest industry wage for the occupations charted. These managers usually work full time, year round. But part-time, seasonal jobs are common in many of the other occupations in the chart, which is why it shows hourly, instead of annual, wages.

Typically, you can enter most of the occupations in the chart with a high school diploma or less education, plus on-the-job training. [Coaches and scouts](#) typically need a bachelor's degree; general and operations managers typically must have a degree and 5 or more years of experience.

Elka Torpey, "Strong growth projected in fitness and recreational sports centers, 2018–28," *Career Outlook*, U.S. Bureau of Labor Statistics, January 2020.

