



# HOOSIERS BY THE NUMBERS

Your premier source for labor market information for Indiana.



## LABOR MARKET REVIEW



## July 2019 Labor Market Review

Reported by: **Cassie Janes**

Regional Workforce Analyst  
[Email Cassie](#)  
cjanes@dwd.in.gov

Tel: 765-454-4760



## LABOR MARKET REVIEW

# Economic Growth Region 8

Statistical Data Report for July 2019, Released September 2019

## State Employment and Unemployment

Unemployment rates were lower in July in 6 states, higher in 2 states, and stable in 42 states and the District of Columbia, the U.S. Bureau of Labor Statistics reported. Three states had jobless rate decreases from a year earlier, 1 state had an increase, and 46 states and the District had little or no change. The national unemployment rate, 3.7 percent, was unchanged over the month and little changed from July 2018.

Nonfarm payroll employment increased in 5 states in July 2019 and was essentially unchanged in 45 states and the District of Columbia. Over the year, 25 states added nonfarm payroll jobs and 25 states and the District were essentially unchanged.

Vermont had the lowest unemployment rate in July, 2.1 percent. The rates in Alabama (3.3 percent), Arkansas (3.4 percent), Maine (3.0 percent), and New Jersey (3.3 percent) set new series lows. (All state series begin in 1976.) Alaska had the highest jobless rate, 6.3 percent. In total, 14 states had unemployment rates lower than the U.S. figure of 3.7 percent, 8 states and the District of Columbia had higher rates, and 28 states had rates that were not appreciably different from that of the nation.



## Economic Growth Region (EGR) 8

Brown, Daviess, Greene, Lawrence, Martin, Monroe, Orange and Owen Counties

## Unemployment Rates by State (seasonally adjusted): July 2019

**U.S. - 3.7%**

Illinois - 4.2%

**Indiana - 3.4%**

Kentucky - 4.3%

Michigan - 4.3%

Ohio - 4%

Source: U.S. Department of Labor, Bureau of Labor Statistics

## Unemployment Rank by County (of 92 counties): July 2019

#8 - Owen (4.3%)

#12 - Greene (4.1%)

#18 - Monroe (3.9%)

#29 - Lawrence (3.7%)

#30 - Orange (3.7%)

#69 - Brown (3.1%)

#82 - Daviess (2.8%)

#88 - Martin (2.7%)

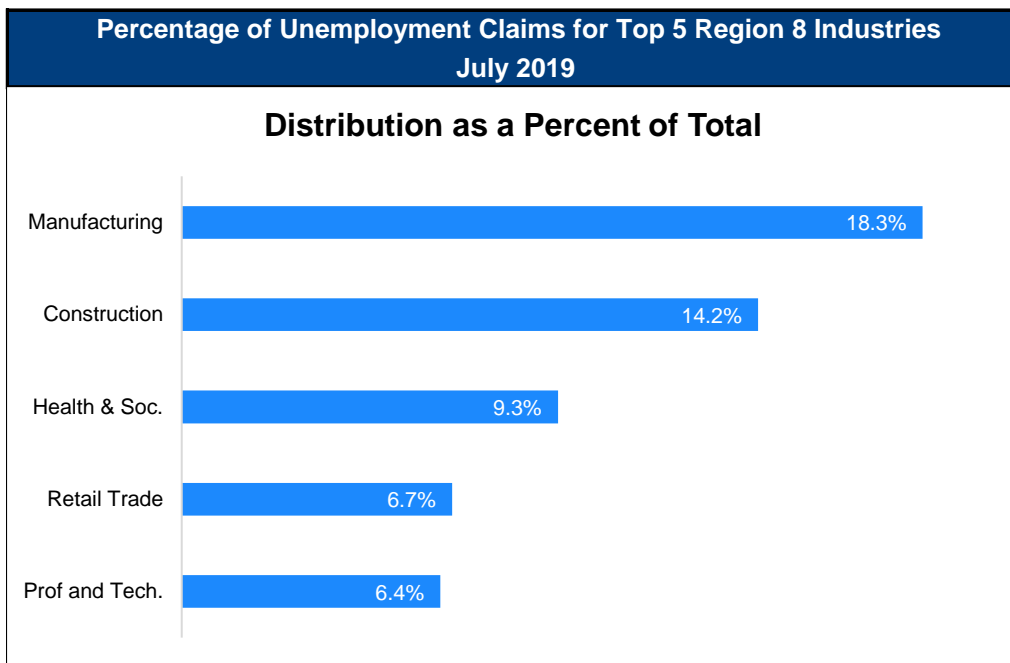
Source: Indiana Department of Workforce Development, Research and Development, Local Area Unemployment Statistics

July 2019 Labor Force Estimates (not seasonally adjusted)						
Area	Labor Force	Employed	Unemployed	Jul-19	Jun-19	Jul-18
U.S.	164,941,000	158,385,000	6,556,000	4.0%	3.8%	4.1%
IN	3,419,895	3,297,672	122,223	3.6%	3.3%	3.6%
EGR 8	148,866	143,367	5,499	3.7%	3.6%	3.9%
Bloomington MSA	74,662	71,697	2,965	4.0%	3.8%	4.2%
Brown Co.	7,775	7,536	239	3.1%	3.1%	3.1%
Daviess Co.	17,259	16,782	477	2.8%	2.7%	2.8%
Greene Co.	13,512	12,955	557	4.1%	4.0%	4.6%
Lawrence Co.	21,386	20,598	788	3.7%	3.6%	3.9%
Martin Co.	5,531	5,381	150	2.7%	2.7%	2.8%
Monroe Co.	65,804	63,222	2,582	3.9%	3.8%	4.1%
Orange Co.	8,741	8,418	323	3.7%	3.6%	3.6%
Owen Co.	8,858	8,475	383	4.3%	4.2%	5.0%
Bloomington	36,166	34,569	1,597	4.4%	4.3%	4.6%

Source: Indiana Department of Workforce Development, Research & Analysis, Local Area Unemployment Statistics | Unemployment Statistics Released: 08/19 | Notes: The data displayed are presented as estimates only. The most recent month's data are always preliminary and are revised when the next month's data are released.

Consumer Price Index (CPI-U Change), Unadjusted Percent Change to July 2019 from				
CPI Item	Jul-18	Jun-19	Jul-18	Jun-19
	U.S. City		Midwest Region*	
<b>All Items</b>	<b>1.8%</b>	<b>0.2%</b>	<b>1.5%</b>	<b>0.2%</b>
Food & Beverages	1.8%	0.1%	1.3%	-0.1%
Housing	3.0%	0.2%	2.7%	0.2%
Apparel	-0.5%	-1.3%	0.3%	-0.2%
Transportation	-0.3%	0.2%	-0.1%	0.5%
Medical Care	2.6%	0.4%	2.4%	0.3%
Recreation	0.7%	0.0%	-0.6%	0.2%
Education & Communication	0.6%	0.2%	-0.7%	-0.2%
Other Goods & Services	1.9%	0.5%	2.2%	0.6%

\*Midwest region = Midwest Urban Average. Midwest Region includes Illinois, Indiana, Iowa, Kansas, Michigan, Minnesota, Missouri, Nebraska, North Dakota, Ohio, South Dakota and Wisconsin | Source: U.S. Bureau of Labor Statistics



Source: Indiana Department of Workforce Development, Research and Analysis

## WARN Notices

WARN Notices for Region 8 for July 2019				
Company	City	County	# of workers affected	Notice Date

**There are no WARN Notices for July 2019 for EGR 8.**

Source: Indiana Department of Workforce Development, WARN Notices | For information on WARN Act requirements, you may go to the U.S. Department of Labor Employment Training Administration Fact Sheet:

<https://www.dolela.gov/programs/factsht/warn.htm>

## Unemployment Claims: July 2019

### Region 8

#### Initial Claims

07/06/19 - 22(D)

07/13/19 - 43(D)

07/20/19 - 18(D)

07/27/19 - 22(D)

#### Continued Claims

07/06/19 - 357

07/13/19 - 333

07/20/19 - 344

07/27/19 - 348

#### Total Claims

07/06/19 - 379

07/13/19 - 376

07/20/19 - 362

07/27/19 - 370

### State of Indiana

#### Initial Claims

07/06/19 - 1,746

07/13/19 - 3,118

07/20/19 - 1,977

07/27/19 - 1,797

#### Continued Claims

07/06/19 - 11,563

07/13/19 - 11,807

07/20/19 - 11,349

07/27/19 - 11,264

#### Total Claims

07/06/19 - 13,309

07/13/19 - 14,925

07/20/19 - 13,326

07/27/19 - 13,061

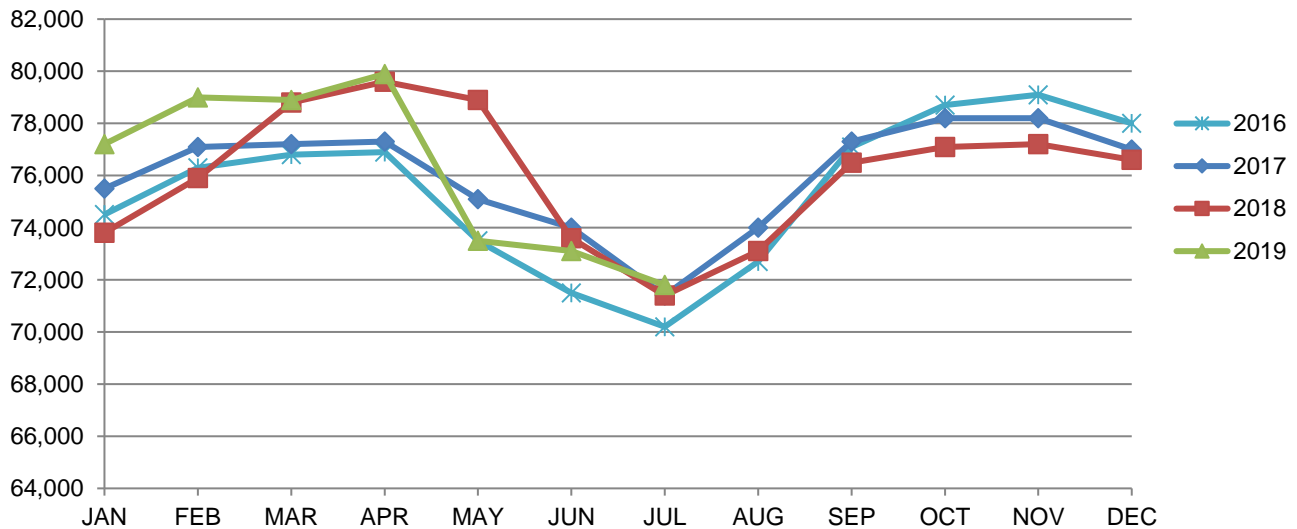
(D) indicates item is affected by non-disclosure issues relating to industry or ownership status |

Source: Indiana Department of Workforce Development, Research and Development

Bloomington MSA							
Wage and Salaried Employment	July 2019			# Change	% Change	# Change	% Change
Industry	Jul-19	Jun-19	Jul-18	Jun-19 to Jul-19		Jul-18 to Jul-19	
<b>Total Nonfarm</b>	<b>71,800</b>	<b>73,100</b>	<b>71,400</b>	<b>-1,300</b>	<b>-1.8%</b>	<b>400</b>	<b>0.6%</b>
<b>Total Private</b>	<b>52,900</b>	<b>52,900</b>	<b>51,900</b>	<b>0</b>	<b>0.0%</b>	<b>1,000</b>	<b>1.9%</b>
Goods Producing	12,200	12,300	12,000	-100	-0.8%	200	1.7%
Service-Providing	59,600	60,800	59,400	-1,200	-2.0%	200	0.3%
Private Service Providing	40,700	40,600	39,900	100	0.3%	800	2.0%
Mining, Logging and Construction	3,200	3,100	2,900	100	3.2%	300	10.3%
Manufacturing	9,000	9,200	9,100	-200	-2.2%	-100	-1.1%
Durable Goods	6,200	6,500	6,200	-300	-4.6%	0	0.0%
Trade, Transportation, and Utilities	10,400	10,100	10,100	300	3.0%	300	3.0%
Wholesale Trade	1,700	1,700	1,700	0	0.0%	0	0.0%
Retail Trade	7,300	7,100	7,100	200	2.8%	200	2.8%
Transportation, Warehousing, and Utilities	1,400	1,300	1,300	100	7.7%	100	7.7%
Information	1,000	1,000	1,000	0	0.0%	0	0.0%
Financial Activities	3,100	3,100	3,000	0	0.0%	100	3.3%
Professional and Business Services	5,400	5,400	5,200	0	0.0%	200	3.9%
Education and Health Services	10,100	10,200	10,000	-100	-1.0%	100	1.0%
Leisure and Hospitality	8,400	8,500	8,200	-100	-1.2%	200	2.4%
Other Services	2,300	2,300	2,400	0	0.0%	-100	-4.2%
<b>Total Government</b>	<b>18,900</b>	<b>20,200</b>	<b>19,500</b>	<b>-1,300</b>	<b>-6.4%</b>	<b>-600</b>	<b>-3.1%</b>
Federal Government	300	300	300	0	0.0%	0	0.0%
State Government	14,700	15,400	14,900	-700	-4.6%	-200	-1.3%
Local Government	3,900	4,500	4,300	-600	-13.3%	-400	-9.3%
Local Government Educational Services	1,200	1,700	1,700	-500	-29.4%	-500	-29.4%
Local Government excluding Educational Services	2,700	2,800	2,600	-100	-3.6%	100	3.9%

Source: Indiana Dept of Workforce Development, Research and Analysis, Current Employment Statistics

### Bloomington MSA Employment Trends



Source: Indiana Department of Workforce Development, Research & Analysis, Current Employment Statistics | Note: Historical data for the most recent 4 years (both seasonally adjusted and not seasonally adjusted) are revised near the beginning of each calendar year, prior to the release of January estimates for statewide data.

<b>Frequently Listed Jobs</b>	
<b>Top 20 job listings in Region 8 in the past month</b>	
<b>Rank</b>	<b>Occupations</b>
1	Production Workers, All Other
2	Registered Nurses
3	Teacher Assistants
4	Light Truck or Delivery Services Drivers
5	Healthcare Practitioners and Technical Workers, All Other
6	Engineers, All Other
7	Customer Service Representatives
8	Retail Salespersons
9	Counter Attendants, Cafeteria, Food Concession, and Coffee Shop
10	Heavy and Tractor-Trailer Truck Drivers
11	Correctional Officers and Jailers
12	Social and Human Service Assistants
13	Building Cleaning Workers, All Other
14	Licensed Practical and Licensed Vocational Nurses
15	Laborers and Freight, Stock, and Material Movers, Hand
16	Welders, Cutters, and Welder Fitters
17	Electronics Engineering Technicians
18	Healthcare Support Workers, All Other
19	Assemblers and Fabricators, All Other
20	Computer User Support Specialists

Source: Indiana Workforce Development, Indiana Career Connect

<b>Applicant Pool</b>	
<b>Top 20 occupations desired by applicants on their resumes in the past 12 months</b>	
<b>Occupations</b>	<b># of applicants</b>
Assemblers and Fabricators, All Other	107
Production Workers, All Other	76
Cashiers	63
Helpers--Production Workers	59
Customer Service Representatives	58
Laborers and Freight, Stock, and Material Movers, Hand	53
Nursing Assistants	46
Office Clerks, General	46
Construction Laborers	46
Stock Clerks and Order Fillers	38
Managers, All Other	33
Retail Salespersons	33
Heavy and Tractor-Trailer Truck Drivers	30
Receptionists and Information Clerks	30
Combined Food Preparation and Serving Workers, Including Fast Food	29
Administrative Services Managers	29
Carpenters	27
Automotive Service Technicians and Mechanics	26
Maintenance and Repair Workers, General	24
Office and Administrative Support Workers, All Other	24

Source: Indiana Workforce Development, Indiana Career Connect

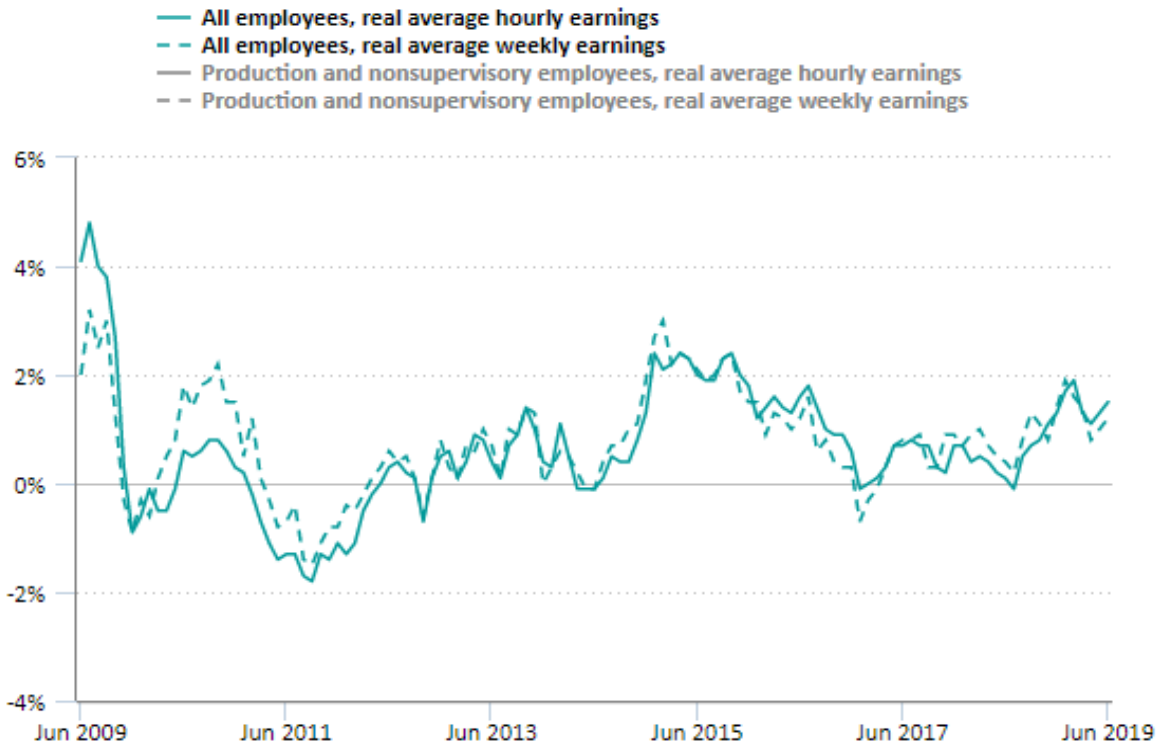
# TED: The Economics Daily

## Real average hourly earnings increased 1.5 percent over the 12 months ending June 2019

JULY 16, 2019

Real average hourly earnings increased 1.5 percent from June 2018 to June 2019. The change in real average hourly earnings combined with a 0.3-percent decrease in the average workweek resulted in a 1.2-percent increase in real average weekly earnings over this period.

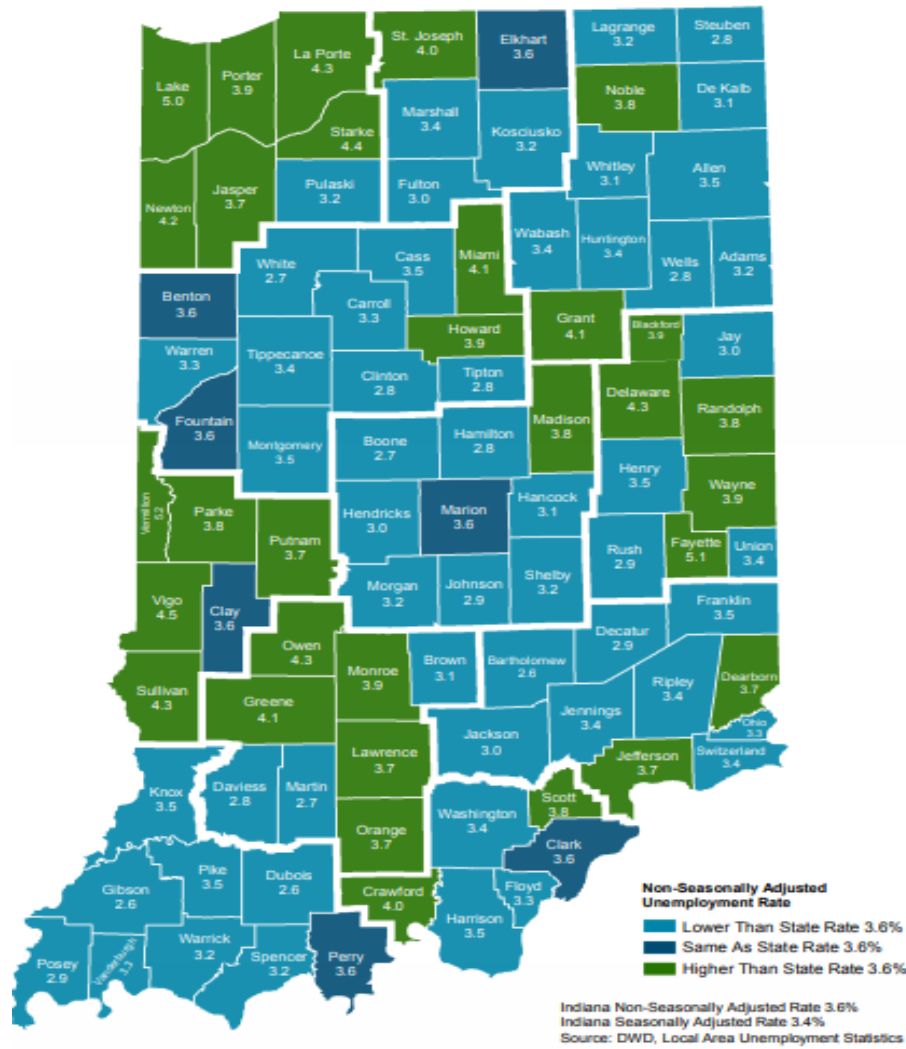
### 12-month percent change in real average hourly and weekly earnings, private sector employees, seasonally adjusted, June 2009–June 2019



For production and nonsupervisory employees, average hourly earnings increased 1.9 percent from June 2018 to June 2019. The change in real average hourly earnings combined with a 0.6-percent decrease in the average workweek resulted in a 1.3-percent increase in real average weekly earnings over this period.

Bureau of Labor Statistics, U.S. Department of Labor, *The Economics Daily*, Real average hourly earnings increased 1.5 percent over the 12 months ending June 2019 on the Internet at <https://www.bls.gov/opub/ted/2019/real-average-hourly-earnings-increased-1-point-5-percent-over-the-12-months-ending-june-2019.htm>

# County Unemployment Rates July 2019 - Non Seasonally Adjusted



INDIANA  
DEPARTMENT OF  
**WORKFORCE**  
DEVELOPMENT

## Questions?

Please contact the DWD  
Research and Analysis  
Regional Labor Analyst  
listed below:

Cassie Janes

Regional Labor Analyst  
Research and Analysis

[Indiana Department of  
Workforce Development](http://Indiana Department of Workforce Development)

709 S. Reed Rd  
Kokomo, IN 46901

765-454-4760

[cjanes@dwd.in.gov](mailto:cjanes@dwd.in.gov)