



## May 2019 Labor Market Review

Reported by: **Cassie Janes**

Regional Workforce Analyst  
[Email Cassie](#)  
cjanes@dwd.in.gov

Tel: 765-454-4760

## LABOR MARKET REVIEW

# Economic Growth Region 8

Statistical Data Report for May 2019, Released July 2019

## State Employment and Unemployment

Unemployment rates were lower in May in 6 states, higher in 2 states, and stable in 42 states and the District of Columbia, the U.S. Bureau of Labor Statistics reported. Five states had jobless rate decreases from a year earlier, 1 state had an increase, and 44 states and the District had little or no change. The national unemployment rate remained at 3.6 percent in May and was little changed from May 2018.

Nonfarm payroll employment increased in Washington in May 2019 and was essentially unchanged in 49 states and the District of Columbia. Over the year, 24 states added nonfarm payroll jobs and 26 states and the District were essentially unchanged.

Vermont had the lowest unemployment rate in May, 2.1 percent. The rates in Texas (3.5 percent) and Vermont (2.1 percent) set new series lows. (All state series begin in 1976.) Alaska had the highest jobless rate, 6.4 percent. In total, 12 states had unemployment rates lower than the U.S. figure of 3.6 percent, 9 states and the District of Columbia had higher rates, and 29 states had rates that were not appreciably different from that of the nation.



### Economic Growth Region (EGR) 8

Brown, Daviess, Greene, Lawrence, Martin, Monroe, Orange and Owen Counties

### Unemployment Rates by State (seasonally adjusted): May 2019

**U.S. - 3.6%**

Illinois - 4.4%

**Indiana - 3.6%**

Kentucky - 4%

Michigan - 4.2%

Ohio - 4.1%

Source: U.S. Department of Labor, Bureau of Labor Statistics

### Unemployment Rank by County (of 92 counties): May 2019

#6 - Owen (3.7%)

#9 - Greene (3.6%)

#13 - Orange (3.3%)

#17 - Lawrence (3.2%)

#20 - Monroe (3.2%)

#56 - Brown (2.7%)

#76 - Martin (2.5%)

#86 - Daviess (2.3%)

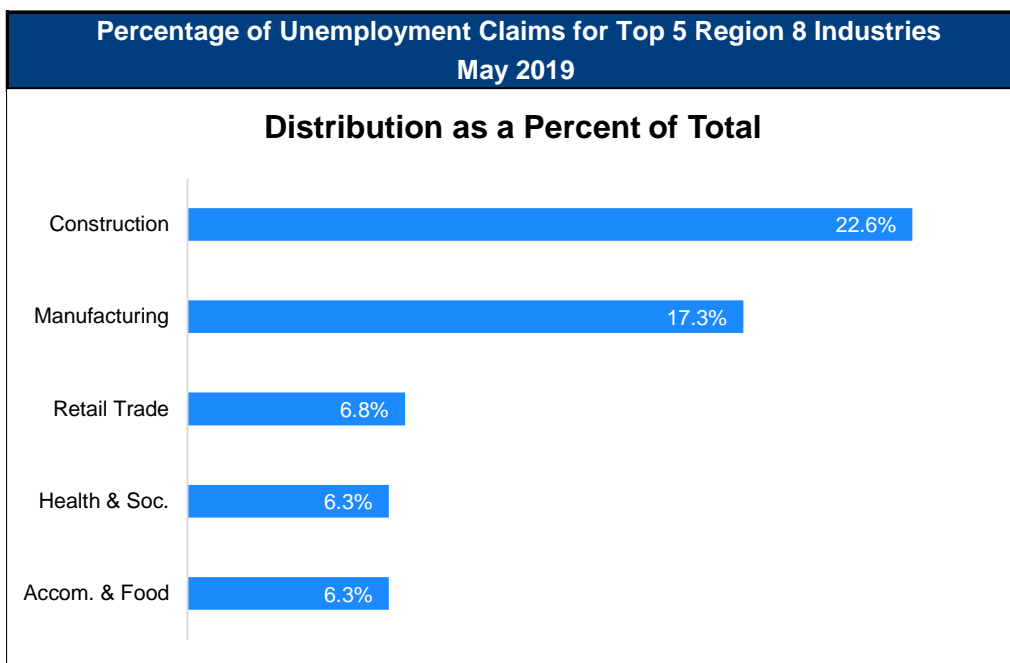
Source: Indiana Department of Workforce Development, Research and Development, Local Area Unemployment Statistics

May 2019 Labor Force Estimates (not seasonally adjusted)						
Area	Labor Force	Employed	Unemployed	May-19	Apr-19	May-18
U.S.	162,655,000	157,152,000	5,503,000	3.4%	3.3%	3.6%
IN	3,368,523	3,269,725	98,798	2.9%	3.1%	3.2%
EGR 8	146,753	142,134	4,619	3.1%	2.9%	3.4%
Bloomington MSA	74,035	71,594	2,441	3.3%	2.9%	3.5%
Brown Co.	7,639	7,434	205	2.7%	2.7%	2.9%
Daviess Co.	16,958	16,563	395	2.3%	2.2%	2.5%
Greene Co.	13,476	12,986	490	3.6%	3.7%	3.8%
Lawrence Co.	21,029	20,346	683	3.2%	3.2%	3.6%
Martin Co.	5,278	5,145	133	2.5%	2.5%	2.5%
Monroe Co.	65,250	63,135	2,115	3.2%	2.8%	3.4%
Orange Co.	8,338	8,066	272	3.3%	3.1%	3.6%
Owen Co.	8,785	8,459	326	3.7%	3.6%	3.8%
Bloomington	35,831	34,522	1,309	3.7%	3.0%	3.9%

Source: Indiana Department of Workforce Development, Research & Analysis, Local Area Unemployment Statistics | Unemployment Statistics Released: 06/19 | Notes: The data displayed are presented as estimates only. The most recent month's data are always preliminary and are revised when the next month's data are released.

Consumer Price Index (CPI-U Change), Unadjusted Percent Change to May 2019 from				
CPI Item	May-18	Apr-19	May-18	Apr-19
	U.S. City		Midwest Region*	
All Items	1.8%	0.2%	1.3%	0.3%
Food & Beverages	2.0%	0.2%	1.5%	0.5%
Housing	2.8%	0.3%	2.7%	0.3%
Apparel	-3.1%	-0.9%	-3.1%	-0.8%
Transportation	0.6%	0.6%	0.2%	0.1%
Medical Care	2.1%	0.3%	1.5%	0.9%
Recreation	1.2%	-0.5%	-0.9%	0.2%
Education & Communication	0.7%	0.0%	-0.3%	-0.2%
Other Goods & Services	1.6%	0.3%	2.3%	0.5%

\*Midwest region = Midwest Urban Average. Midwest Region includes Illinois, Indiana, Iowa, Kansas, Michigan, Minnesota, Missouri, Nebraska, North Dakota, Ohio, South Dakota and Wisconsin | Source: U.S. Bureau of Labor Statistics



Source: Indiana Department of Workforce Development, Research and Analysis

## WARN Notices

WARN Notices for Region 8 for May 2019				
Company	City	County	# of workers affected	Notice Date

**There are no WARN Notices for May 2019 for EGR 8.**

Source: Indiana Department of Workforce Development, WARN Notices | For information on WARN Act requirements, you may go to the U.S. Department of Labor Employment Training Administration Fact Sheet:

<https://www.dolela.gov/programs/factsht/warn.htm>

## Unemployment Claims: May 2019

### Region 8

#### Initial Claims

05/04/19 - 55(D)

05/11/19 - 21(D)

05/18/19 - 33(D)

05/25/19 - 44(D)

#### Continued Claims

05/04/19 - 380

05/11/19 - 366

05/18/19 - 387

05/25/19 - 363

#### Total Claims

05/04/19 - 435

05/11/19 - 387

05/18/19 - 420

05/25/19 - 407

### State of Indiana

#### Initial Claims

05/04/19 - 1,821

05/11/19 - 1,805

05/18/19 - 1,747

05/25/19 - 1,669

#### Continued Claims

05/04/19 - 11,559

05/11/19 - 11,380

05/18/19 - 11,273

05/25/19 - 11,323

#### Total Claims

05/04/19 - 13,380

05/11/19 - 13,185

05/18/19 - 13,020

05/25/19 - 12,992

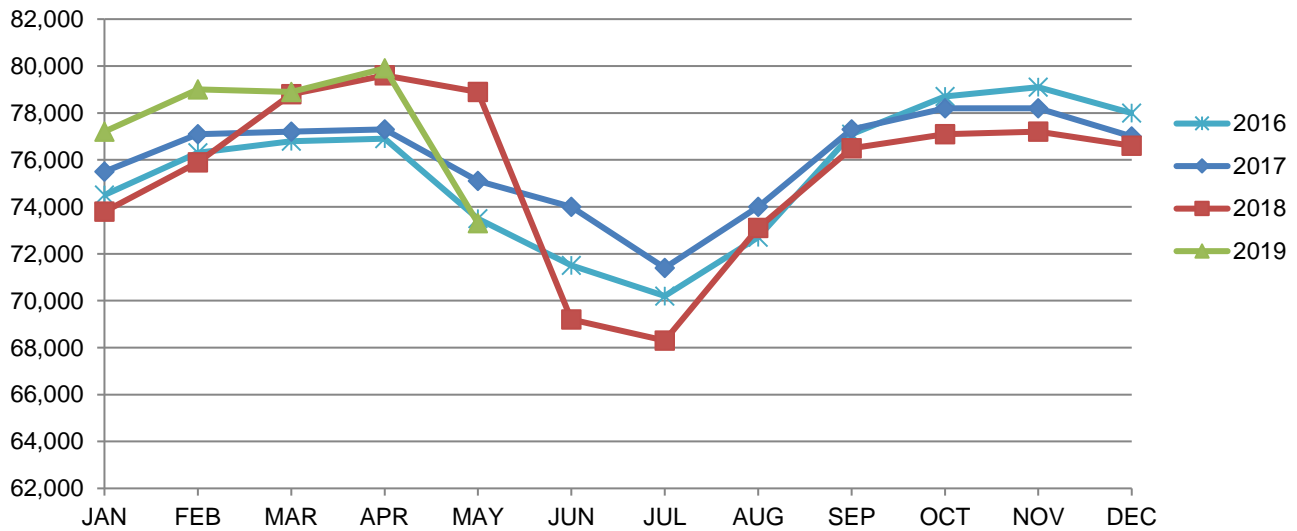
(D) indicates item is affected by non-disclosure issues relating to industry or ownership status |

Source: Indiana Department of Workforce Development, Research and Development

Bloomington MSA							
Wage and Salaried Employment	May 2019			# Change	% Change	# Change	% Change
Industry	May-19	Apr-19	May-18	Apr-19 to May-19	May-18 to May-19	May-18 to May-19	May-18 to May-19
<b>Total Nonfarm</b>	<b>73,300</b>	<b>79,900</b>	<b>78,900</b>	<b>-6,600</b>	<b>-8.3%</b>	<b>-5,600</b>	<b>-7.1%</b>
<b>Total Private</b>	<b>52,500</b>	<b>52,600</b>	<b>52,300</b>	<b>-100</b>	<b>-0.2%</b>	<b>200</b>	<b>0.4%</b>
Goods Producing	12,000	11,800	11,800	200	1.7%	200	1.7%
Service-Providing	61,300	68,100	67,100	-6,800	-10.0%	-5,800	-8.6%
Private Service Providing	40,500	40,800	40,500	-300	-0.7%	0	0.0%
Mining, Logging and Construction	2,900	2,800	2,800	100	3.6%	100	3.6%
Manufacturing	9,100	9,000	9,000	100	1.1%	100	1.1%
Durable Goods	6,500	6,500	6,200	0	0.0%	300	4.8%
Trade, Transportation, and Utilities	10,100	10,100	10,200	0	0.0%	-100	-1.0%
Wholesale Trade	1,700	1,700	1,700	0	0.0%	0	0.0%
Retail Trade	7,100	7,100	7,100	0	0.0%	0	0.0%
Transportation, Warehousing, and Utilities	1,300	1,300	1,400	0	0.0%	-100	-7.1%
Information	1,000	1,000	1,100	0	0.0%	-100	-9.1%
Financial Activities	3,000	3,000	3,000	0	0.0%	0	0.0%
Professional and Business Services	5,400	5,400	5,100	0	0.0%	300	5.9%
Education and Health Services	10,200	10,200	10,100	0	0.0%	100	1.0%
Leisure and Hospitality	8,500	8,800	8,700	-300	-3.4%	-200	-2.3%
Other Services	2,300	2,300	2,300	0	0.0%	0	0.0%
<b>Total Government</b>	<b>20,800</b>	<b>27,300</b>	<b>26,600</b>	<b>-6,500</b>	<b>-23.8%</b>	<b>-5,800</b>	<b>-21.8%</b>
Federal Government	300	400	300	-100	-25.0%	0	0.0%
State Government	15,200	21,600	21,000	-6,400	-29.6%	-5,800	-27.6%
Local Government	5,300	5,300	5,300	0	0.0%	0	0.0%
Local Government Educational Services	2,600	2,600	2,600	0	0.0%	0	0.0%
Local Government excluding Educational Services	2,700	2,700	2,700	0	0.0%	0	0.0%

Source: Indiana Dept of Workforce Development, Research and Analysis, Current Employment Statistics

### Bloomington MSA Employment Trends



Source: Indiana Department of Workforce Development, Research & Analysis, Current Employment Statistics | Note: Historical data for the most recent 4 years (both seasonally adjusted and not seasonally adjusted) are revised near the beginning of each calendar year, prior to the release of January estimates for statewide data.

<b>Frequently Listed Jobs</b>	
<b>Top 20 job listings in Region 8 in the past month</b>	
<b>Rank</b>	<b>Occupations</b>
1	Home Health Aides
2	Production Workers, All Other
3	Registered Nurses
4	Healthcare Practitioners and Technical Workers, All Other
5	Customer Service Representatives
6	Counter Attendants, Cafeteria, Food Concession, and Coffee Shop
7	Retail Salespersons
8	Therapists, All Other
9	Engineers, All Other
10	Licensed Practical and Licensed Vocational Nurses
11	Correctional Officers and Jailers
12	Information Security Analysts
13	Stock Clerks- Stockroom, Warehouse, or Storage Yard
14	Social and Human Service Assistants
15	Building Cleaning Workers, All Other
16	Heavy and Tractor-Trailer Truck Drivers
17	First-Line Supervisors of Office and Administrative Support Workers
18	Parts Salespersons
19	Accountants
20	Business Operations Specialists, All Other

Source: Indiana Workforce Development, Indiana Career Connect

<b>Applicant Pool</b>	
<b>Top 20 occupations desired by applicants on their resumes in the past 12 months</b>	
<b>Occupations</b>	<b># of applicants</b>
Assemblers and Fabricators, All Other	230
Production Workers, All Other	190
Helpers--Production Workers	123
Cashiers	122
Customer Service Representatives	106
Laborers and Freight, Stock, and Material Movers, Hand	92
Office and Administrative Support Workers, All Other	81
Office Clerks, General	77
Construction Laborers	75
Stock Clerks and Order Fillers	72
Heavy and Tractor-Trailer Truck Drivers	70
Combined Food Preparation and Serving Workers, Including Fast Food	69
Nursing Assistants	68
Receptionists and Information Clerks	66
Retail Salespersons	64
Extraction Workers, All Other	63
Managers, All Other	59
Administrative Services Managers	54
Home Health Aides	50
Welders, Cutters, Solderers, and Brazers	46

Source: Indiana Workforce Development, Indiana Career Connect

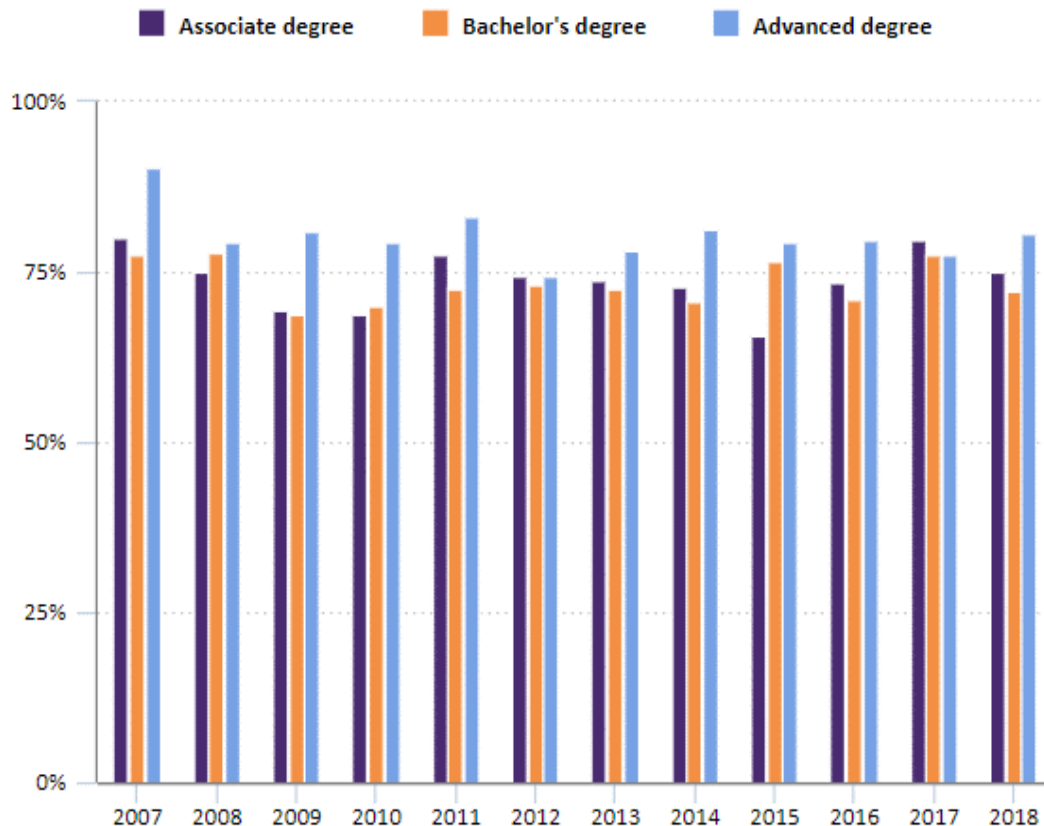
## TED: The Economics Daily

### 72.3 percent of 2018 bachelor's degree recipients were employed in October 2018

MAY 31, 2019

There were 1.8 million people ages 20 to 29 who earned college degrees between January and October 2018. About 1.1 million of these recent degree recipients earned a bachelor's degree, 352,000 earned an advanced degree, and 374,000 earned an associate degree. Among recent bachelor's degree recipients, 72.3 percent were employed in October 2018.

#### Employment–population ratios for recent college degree recipients ages 20 to 29, by degree type, October 2007–October 2018



Twenty percent (or 224,000) of recent bachelor's degree recipients were enrolled in school in October 2018. These recent graduates who were enrolled in school were much less likely to be employed (47.9 percent) than those who were not enrolled (78.5 percent).

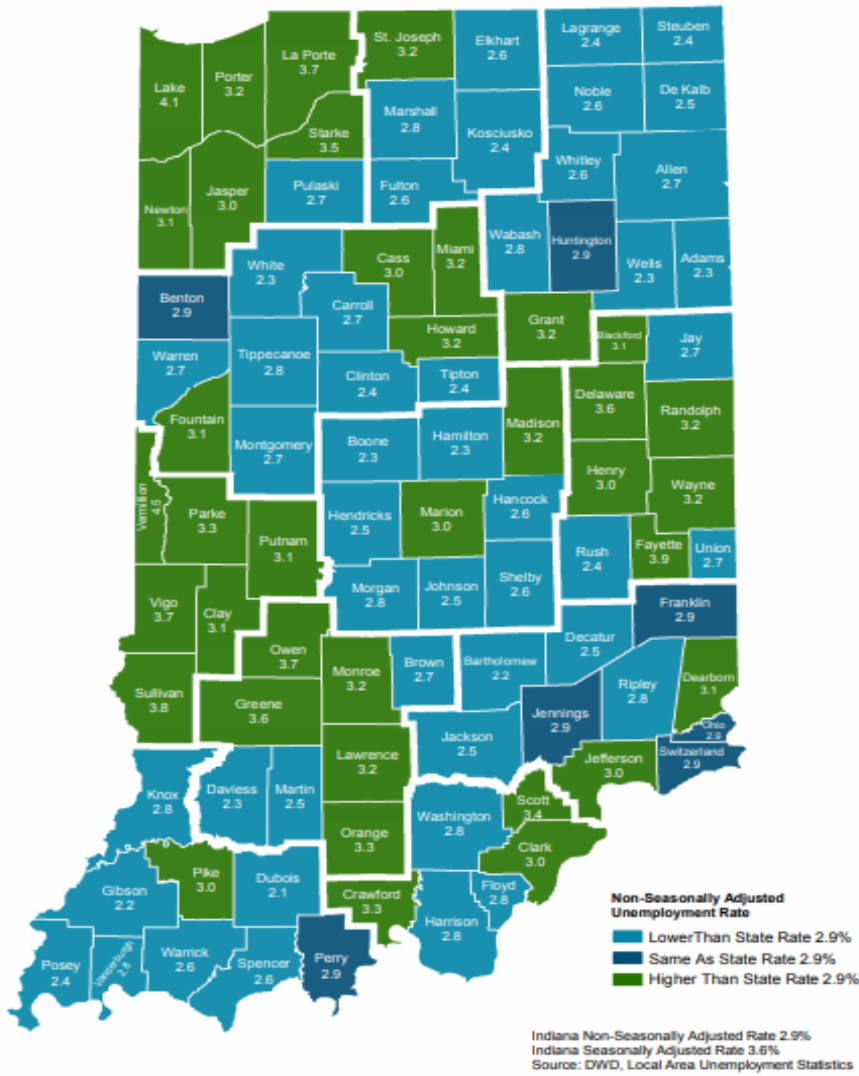
Among people who received an advanced degree between January and October 2018, 80.7 percent were employed in October 2018. Among 2018 associate degree recipients, 75.0 percent were employed in October 2018.

These data are from the [Current Population Survey](#). For more information, see "[College Enrollment and Work Activity of Recent High School and College Graduates — 2018](#)." Advanced degrees include master's, professional, or doctoral degree.

Bureau of Labor Statistics, U.S. Department of Labor, *The Economics Daily*, 72.3 percent of 2018 bachelor's degree recipients were employed in October 2018 on the Internet at <https://www.bls.gov/opub/ted/2019/72-point-3-percent-of-2018-bachelors-degree-recipients-were-employed-in-october-2018.htm>



# County Unemployment Rates May 2019 - Non Seasonally Adjusted



INDIANA  
DEPARTMENT OF  
**WORKFORCE**  
DEVELOPMENT

## Questions?

Please contact the DWD  
Research and Analysis  
Regional Labor Analyst  
listed below:

Cassie Janes

Regional Labor Analyst  
Research and Analysis

[Indiana Department of  
Workforce Development](http://Indiana Department of Workforce Development)

709 S. Reed Rd  
Kokomo, IN 46901

765-454-4760

[cjanes@dwd.in.gov](mailto:cjanes@dwd.in.gov)