



# HOOSIERS BY THE NUMBERS

Your premier source for labor market information for Indiana.



## LABOR MARKET REVIEW



## February 2019 Labor Market Review

Reported by: **Cassie Janes**

Regional Workforce Analyst  
[Email Cassie](#)  
cjanes@dwd.in.gov

Tel: 765-454-4760



## LABOR MARKET REVIEW

# Economic Growth Region 8

Statistical Data Report for February 2019, Released April 2019

## State Employment and Unemployment

Unemployment rates were lower in February in 4 states and stable in 46 states and the District of Columbia, the U.S. Bureau of Labor Statistics reported. Seven states had jobless rate decreases from a year earlier, 2 states had increases, and 41 states and the District had little or no change. The national unemployment rate declined to 3.8 percent over the month and was 0.3 percentage point lower than in February 2018.

Nonfarm payroll employment increased in 2 states in February 2019 and was essentially unchanged in 48 states and the District of Columbia. Over the year, 22 states added nonfarm payroll jobs and 28 states and the District were essentially unchanged.

Iowa, New Hampshire, North Dakota, and Vermont had the lowest unemployment rates in February, 2.4 percent each. The rates in Alabama (3.7 percent), North Dakota (2.4 percent), Tennessee (3.2 percent), and Vermont (2.4 percent) set new series lows. (All state series begin in 1976.) Alaska had the highest jobless rate, 6.5 percent. In total, 16 states had unemployment rates lower than the U.S. figure of 3.8 percent, 9 states and the District of Columbia had higher rates, and 25 states had rates that were not appreciably different from that of the nation.



## Economic Growth Region (EGR) 8

Brown, Daviess, Greene, Lawrence, Martin, Monroe, Orange and Owen Counties

## Unemployment Rates by State (seasonally adjusted): February 2019

**U.S. - 3.8%**

Illinois - 4.3%

**Indiana - 3.5%**

Kentucky - 4.1%

Michigan - 4%

Ohio - 4.6%

Source: U.S. Department of Labor, Bureau of Labor Statistics

## Unemployment Rank by County (of 92 counties): February 2019

#5 - Greene (5.8%)

#10 - Owen (5.4%)

#20 - Lawrence (4.7%)

#33 - Brown (4.4%)

#34 - Orange (4.4%)

#46 - Monroe (4.2%)

#79 - Martin (3.4%)

#81 - Daviess (3.3%)

Source: Indiana Department of Workforce Development, Research and Development, Local Area Unemployment Statistics

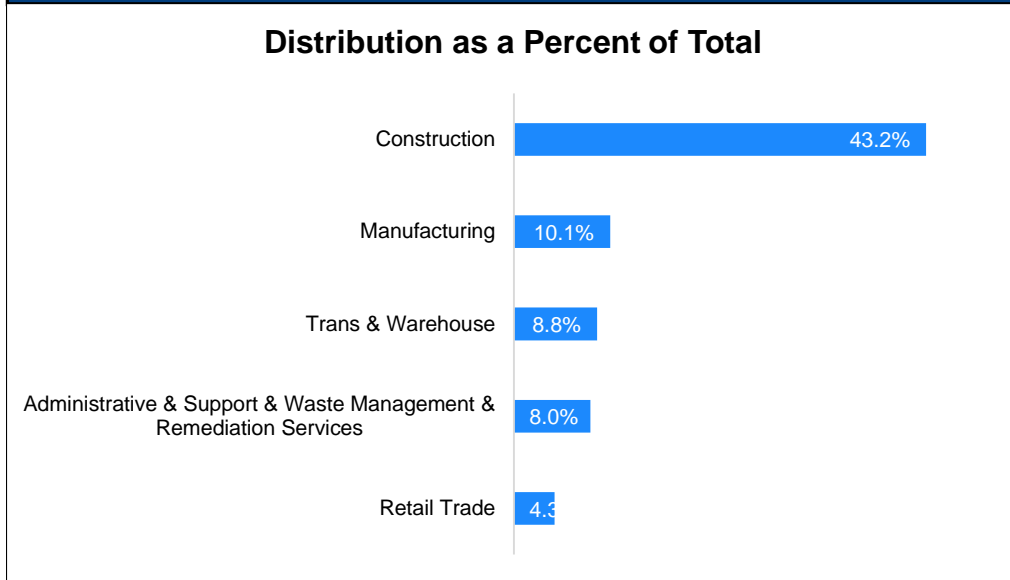
February 2019 Labor Force Estimates (not seasonally adjusted)						
Area	Labor Force	Employed	Unemployed	Feb-19	Jan-19	Feb-18
U.S.	162,793,000	156,167,000	6,625,000	4.1%	4.4%	4.4%
IN	3,412,936	3,273,406	139,530	4.1%	4.1%	3.8%
EGR 8	155,581	148,752	6,829	4.4%	4.3%	4.0%
Bloomington MSA	81,490	77,943	3,547	4.4%	4.4%	3.9%
Brown Co.	7,713	7,376	337	4.4%	3.9%	3.8%
Daviess Co.	16,828	16,271	557	3.3%	3.3%	3.0%
Greene Co.	13,980	13,171	809	5.8%	5.6%	5.0%
Lawrence Co.	21,509	20,497	1,012	4.7%	4.5%	4.6%
Martin Co.	5,231	5,053	178	3.4%	3.5%	2.9%
Monroe Co.	71,838	68,815	3,023	4.2%	4.3%	3.8%
Orange Co.	8,830	8,441	389	4.4%	4.2%	4.8%
Owen Co.	9,652	9,128	524	5.4%	5.2%	5.0%
Bloomington	39,348	37,628	1,720	4.4%	4.7%	4.0%

Source: Indiana Department of Workforce Development, Research & Analysis, Local Area Unemployment Statistics | Unemployment Statistics Released: 03/19 | Notes: The data displayed are presented as estimates only. The most recent month's data are always preliminary and are revised when the next month's data are released.

Consumer Price Index (CPI-U Change), Unadjusted Percent Change to February 2019 from				
CPI Item	Feb-18	Jan-19	Feb-18	Jan-19
	U.S. City		Midwest Region*	
<b>All Items</b>	<b>1.5%</b>	<b>0.4%</b>	<b>1.3%</b>	<b>0.7%</b>
Food & Beverages	2.0%	0.3%	1.4%	0.6%
Housing	2.9%	0.3%	2.7%	0.3%
Apparel	-0.8%	2.6%	-0.9%	3.3%
Transportation	-1.5%	0.8%	-1.4%	2.4%
Medical Care	1.7%	0.2%	2.0%	-0.2%
Recreation	1.0%	0.0%	-1.1%	-0.2%
Education & Communication	0.6%	0.1%	0.0%	0.0%
Other Goods & Services	2.2%	0.5%	4.3%	0.7%

\*Midwest region = Midwest Urban Average. Midwest Region includes Illinois, Indiana, Iowa, Kansas, Michigan, Minnesota, Missouri, Nebraska, North Dakota, Ohio, South Dakota and Wisconsin | Source: U.S. Bureau of Labor Statistics

### Percentage of Unemployment Claims for Top 5 Region 8 Industries February 2019



Source: Indiana Department of Workforce Development, Research and Analysis

## WARN Notices

WARN Notices for Region 8 for February 2019				
Company	City	County	# of workers affected	Notice Date

**There are no WARN Notices for February 2019 for EGR 8.**

Source: Indiana Department of Workforce Development, WARN Notices | For information on WARN Act requirements, you may go to the U.S. Department of Labor Employment Training Administration Fact Sheet:

<https://www.dolela.gov/programs/factsht/warn.htm>

## Unemployment Claims: February 2019

### Region 8

#### Initial Claims

02/02/19 - 120(D)

02/09/19 - 96(D)

02/16/19 - 70(D)

02/23/19 - 45(D)

#### Continued Claims

02/02/19 - 950

02/09/19 - 935

02/16/19 - 939

02/23/19 - 878

#### Total Claims

02/02/19 - 1,070

02/09/19 - 1,031

02/16/19 - 1,009

02/23/19 - 923

### State of Indiana

#### Initial Claims

02/02/19 - 3,013

02/09/19 - 3,124

02/16/19 - 2,171

02/23/19 - 2,063

#### Continued Claims

02/02/19 - 20,800

02/09/19 - 19,942

02/16/19 - 19,711

02/23/19 - 19,194

#### Total Claims

02/02/19 - 23,813

02/09/19 - 23,066

02/16/19 - 21,882

02/23/19 - 21,257

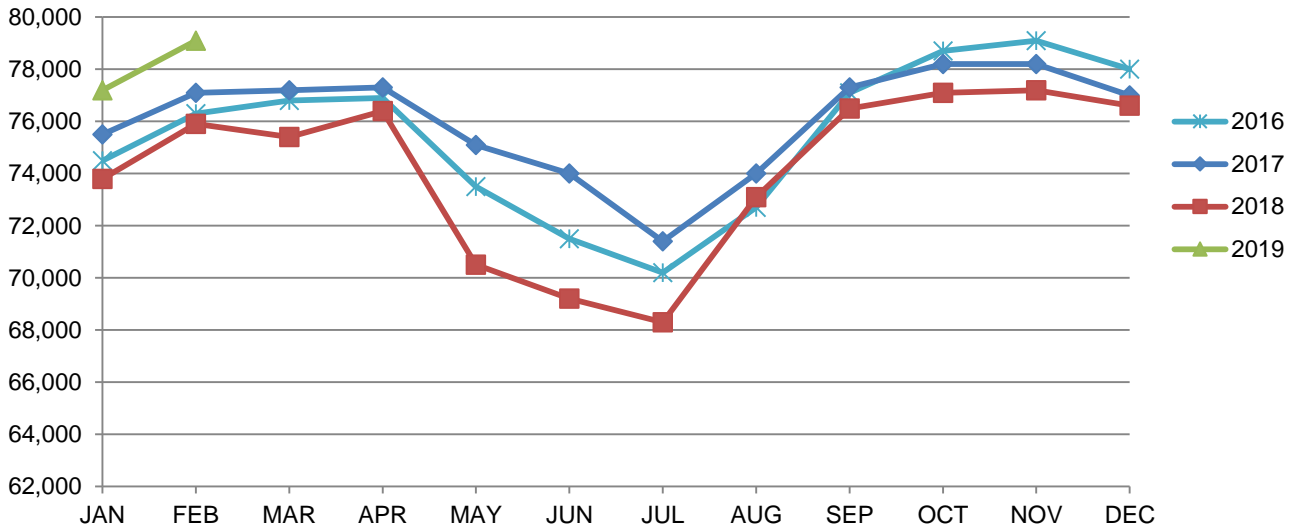
(D) indicates item is affected by non-disclosure issues relating to industry or ownership status |

Source: Indiana Department of Workforce Development, Research and Development

Bloomington MSA							
Wage and Salaried Employment	February 2019			# Change	% Change	# Change	% Change
Industry	Feb-19	Jan-19	Feb-18	Jan-19 to Feb-19		Feb-18 to Feb-19	
<b>Total Nonfarm</b>	<b>79,100</b>	<b>77,200</b>	<b>79,300</b>	<b>1,900</b>	<b>2.5%</b>	<b>-200</b>	<b>-0.3%</b>
<b>Total Private</b>	<b>52,000</b>	<b>51,700</b>	<b>52,300</b>	<b>300</b>	<b>0.6%</b>	<b>-300</b>	<b>-0.6%</b>
Goods Producing	11,500	11,500	11,500	0	0.0%	0	0.0%
Service-Providing	67,600	65,700	67,800	1,900	2.9%	-200	-0.3%
Private Service Providing	40,500	40,200	40,800	300	0.8%	-300	-0.7%
Mining, Logging and Construction	2,600	2,600	2,500	0	0.0%	100	4.0%
Manufacturing	8,900	8,900	9,000	0	0.0%	-100	-1.1%
Durable Goods	6,400	6,400	6,200	0	0.0%	200	3.2%
Trade, Transportation, and Utilities	10,000	10,000	10,300	0	0.0%	-300	-2.9%
Wholesale Trade	1,700	1,700	1,700	0	0.0%	0	0.0%
Retail Trade	7,000	7,000	7,300	0	0.0%	-300	-4.1%
Transportation, Warehousing, and Utilities	1,300	1,300	1,300	0	0.0%	0	0.0%
Information	1,000	1,000	1,100	0	0.0%	-100	-9.1%
Financial Activities	3,100	3,000	2,900	100	3.3%	200	6.9%
Professional and Business Services	5,200	5,200	5,000	0	0.0%	200	4.0%
Education and Health Services	10,200	10,200	10,000	0	0.0%	200	2.0%
Leisure and Hospitality	8,700	8,500	9,200	200	2.4%	-500	-5.4%
Other Services	2,300	2,300	2,300	0	0.0%	0	0.0%
<b>Total Government</b>	<b>27,100</b>	<b>25,500</b>	<b>27,000</b>	<b>1,600</b>	<b>6.3%</b>	<b>100</b>	<b>0.4%</b>
Federal Government	300	400	300	-100	-25.0%	0	0.0%
State Government	21,500	19,900	21,500	1,600	8.0%	0	0.0%
Local Government	5,300	5,200	5,200	100	1.9%	100	1.9%
Local Government Educational Services	2,700	2,600	2,600	100	3.9%	100	3.9%
Local Government excluding Educational Services	2,600	2,600	2,600	0	0.0%	0	0.0%

Source: Indiana Dept of Workforce Development, Research and Analysis, Current Employment Statistics

### Bloomington MSA Employment Trends



Source: Indiana Department of Workforce Development, Research & Analysis, Current Employment Statistics | Note: Historical data for the most recent 4 years (both seasonally adjusted and not seasonally adjusted) are revised near the beginning of each calendar year, prior to the release of January estimates for statewide data.

<b>Frequently Listed Jobs</b>	
<b>Top 20 job listings in Region 8 in the past month</b>	
<b>Rank</b>	<b>Occupations</b>
1	Registered Nurses
2	Farmworkers and Laborers, Crop
3	Healthcare Practitioners and Technical Workers, All Other
4	Production Workers, All Other
5	Therapists, All Other
6	Heavy and Tractor-Trailer Truck Drivers
7	Highway Maintenance Workers
8	Rock Splitters, Quarry
9	Social and Human Service Assistants
10	Customer Service Representatives
11	Grounds Maintenance Workers, All Other
12	Home Health Aides
13	Licensed Practical and Licensed Vocational Nurses
14	Logisticians
15	Engineers, All Other
16	Maintenance and Repair Workers, General
17	Managers, All Other
18	Pharmacists
19	Advertising Sales Agents
20	Automotive Service Technicians and Mechanics

Source: Indiana Workforce Development, Indiana Career Connect

<b>Applicant Pool</b>	
<b>Top 20 occupations desired by applicants on their resumes in the past 12 months</b>	
<b>Occupations</b>	<b># of applicants</b>
Assemblers and Fabricators, All Other	311
Production Workers, All Other	241
Cashiers	156
Helpers--Production Workers	152
Laborers and Freight, Stock, and Material Movers, Hand	129
Customer Service Representatives	129
Office and Administrative Support Workers, All Other	116
Office Clerks, General	109
Stock Clerks and Order Fillers	96
Construction Laborers	89
Managers, All Other	86
Retail Salespersons	85
Receptionists and Information Clerks	82
Extraction Workers, All Other	82
Nursing Assistants	78
Heavy and Tractor-Trailer Truck Drivers	72
Combined Food Preparation and Serving Workers, Including Fast Food	71
Administrative Services Managers	70
Janitors and Cleaners, Except Maids and Housekeeping Cleaners	60
Welders, Cutters, Solderers, and Brazers	59

Source: Indiana Workforce Development, Indiana Career Connect

## Celebrating Women in STEM Occupations

March 6, 2019 International Women’s Day was first celebrated on March 19, 1911. During International Women’s Year in 1975, the United Nations began celebrating International Women’s Day on March 8.

In the United States, the first National Woman’s Day was observed on February 28, 1909. The Socialist Party of America designated this day to honor the 1908 garment workers’ strike in New York, where women protested against poor working conditions. Since President Jimmy Carter’s Presidential Proclamation in 1980, March has included a celebration of National Women’s History.

This blog celebrates women in the labor force, especially those working in STEM (science, technology, engineering, and math) professions.

### But first some context

When President Carter issued his proclamation in 1980, 47.7 percent of women were employed, compared with 54.9 percent of women in 2018. For women ages 25 to 54, there has been an even greater increase in employment — from 60.1 percent in 1980 to 72.8 percent in 2018.

### Women work in a variety of occupations. The largest number of women work as:

- Registered nurses (2.8 million)
- Elementary and middle school teachers (2.7 million)
- Secretaries and administrative assistants (2.4 million)
- Cashiers (2.4 million)

### The occupations that overwhelmingly comprise women include:

- Preschool and kindergarten teachers (97.6 percent are women)
- Dental hygienists (97.1 percent)
- Speech-language pathologists (96.0 percent)
- Dental assistants (96.0 percent)

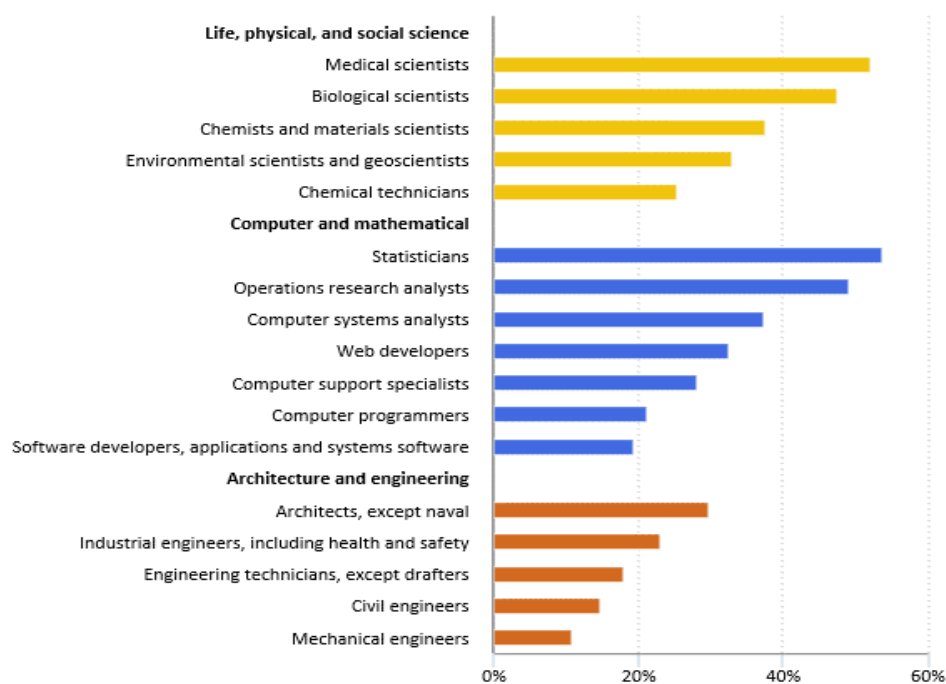
### How are women doing in STEM occupations?

Three broad occupational groups have many STEM jobs: life, physical, and social science occupations; computer and mathematical occupations; and architecture and engineering occupations.

- Nearly half of the people in life, physical, and social science occupations are women.
- About 1 in 4 people working in computer and mathematical occupations are women.
- About 1 in 6 people working in architecture and engineering occupations are women.

### Here’s a look at women’s shares in more specific STEM occupations.

**Women as a percent of total employed in selected STEM occupations, 2018 annual averages**



Source: U.S. Bureau of Labor Statistics.

