

Economic Growth Region 7

Statistical Data Report for November 2017, Released January 2018

State Employment and Unemployment

Unemployment rates were lower in November in eight states, higher in two states, and stable in 40 states and the District of Columbia, the U.S. Bureau of Labor Statistics reported. Twenty-three states had jobless rate decreases from a year earlier, two states had increases, and 25 states and the District had little or no change. The national unemployment rate was unchanged from October at 4.1 percent but was 0.5 percentage point lower than in November 2016.

Hawaii had the lowest unemployment rate in November, 2.0 percent. The rates in Alabama (3.5 percent), California (4.6 percent), Hawaii (2.0 percent), Mississippi (4.8 percent), and Texas (3.8 percent) set new series lows. (All state series begin in 1976.) Alaska had the highest jobless rate, 7.2 percent. In total, 17 states had unemployment rates lower than the U.S. figure of 4.1 percent, 9 states and the District of Columbia had higher rates, and 24 states had rates that were not appreciably different from that of the nation.

Six states had over-the-month increases in nonfarm payroll employment in November 2017. The largest increase in employment over the month occurred in Texas (+54,500), followed by California (+47,400) and New York (+24,900). In percentage terms, the largest increases occurred in Iowa, South Carolina, and Texas (+0.4 percent each). Two states had over-the-month decreases in nonfarm payroll employment in November: Alaska (-3,000, or -0.9 percent) and North Dakota (-2,700, or -0.6 percent).



Economic Growth Region (EGR) 7

Clay, Parke, Putnam, Sullivan, Vermillion and Vigo Counties

Unemployment Rates by State (seasonally adjusted): November 2017

U.S. - 4.1%

Illinois - 4.9%

Indiana - 3.7%

Kentucky - 4.7%

Michigan - 4.6%

Ohio - 4.8%

Source: U.S. Department of Labor, Bureau of Labor Statistics

Unemployment Rank by County (of 92 counties): November 2017

#3 - Vermillion (4.7%)

#9 - Sullivan (4.2%)

#12 - Vigo (4.1%)

#27 - Parke (3.7%)

#36 - Clay (3.5%)

#39 - Putnam (3.5%)

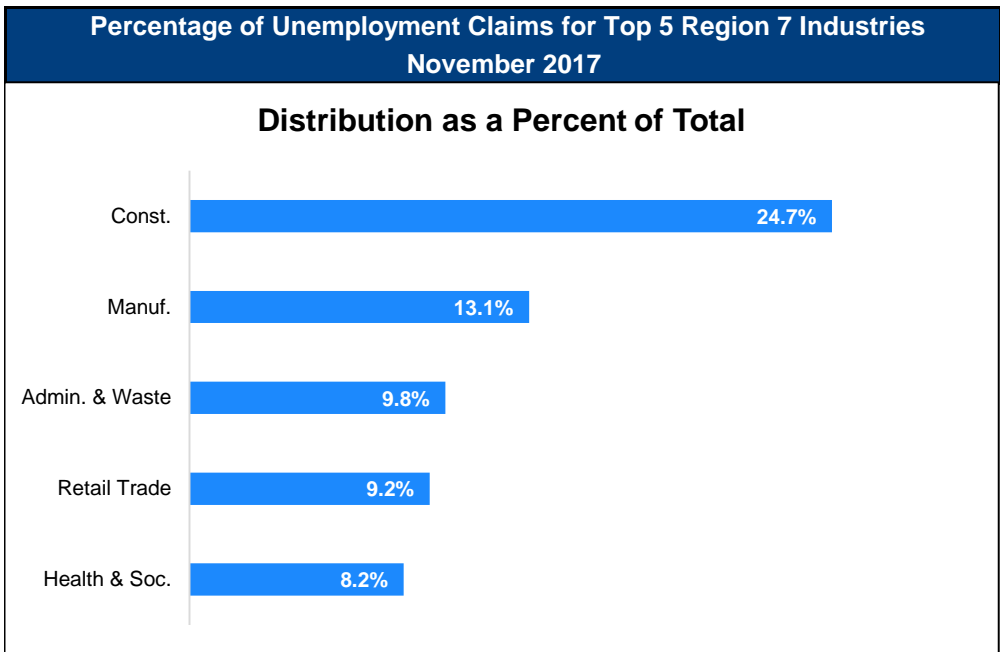
Source: Indiana Department of Workforce Development, Research and Development, Local Area Unemployment Statistics

November 2017 Labor Force Estimates (not seasonally adjusted)						
Area	Labor Force	Employed	Unemployed	Nov-17	Oct-17	Nov-16
U.S.	160,466,000	154,180,000	6,286,000	3.9%	3.9%	4.4%
IN	3,288,895	3,178,569	110,326	3.4%	3.4%	3.9%
EGR 7	100,686	96,701	3,985	4.0%	3.9%	4.4%
Terre Haute MSA	76,916	73,776	3,140	4.1%	4.1%	4.5%
Clay Co.	12,345	11,914	431	3.5%	3.5%	4.0%
Parke Co.	7,034	6,772	262	3.7%	3.7%	4.6%
Putnam Co.	16,736	16,153	583	3.5%	3.3%	3.8%
Sullivan Co.	8,620	8,258	362	4.2%	4.0%	4.9%
Vermillion Co.	7,162	6,827	335	4.7%	5.1%	5.2%
Vigo Co.	48,789	46,777	2,012	4.1%	4.0%	4.5%
Terre Haute	25,432	24,328	1,104	4.3%	4.2%	4.7%

Source: Indiana Department of Workforce Development, Research & Analysis, Local Area Unemployment Statistics | Unemployment Statistics Released: 12/17 | Notes: The data displayed are presented as estimates only. The most recent month's data are always preliminary and are revised when the next month's data are released.

Consumer Price Index (CPI-U Change), Unadjusted Percent Change to November 2017 from				
CPI Item	Nov-16	Oct-17	Nov-16	Oct-17
	U.S. City		Midwest Region*	
All Items	2.2%	0.0%	1.9%	0.2%
Food & Beverages	1.4%	-0.2%	1.2%	-0.2%
Housing	2.8%	0.0%	2.2%	0.1%
Apparel	-1.6%	-3.2%	-0.1%	-3.0%
Transportation	4.4%	0.8%	4.8%	1.7%
Medical Care	1.7%	0.0%	0.6%	0.3%
Recreation	1.4%	-0.2%	2.7%	-0.7%
Education & Communication	-1.7%	0.2%	-1.9%	0.1%
Other Goods & Services	2.4%	0.0%	2.1%	0.1%

*Midwest region = Midwest Urban Average. Midwest Region includes Illinois, Indiana, Iowa, Kansas, Michigan, Minnesota, Missouri, Nebraska, North Dakota, Ohio, South Dakota and Wisconsin | Source: U.S. Bureau of Labor Statistics



Source: Indiana Department of Workforce Development, Research and Analysis

WARN Notices

WARN Notices for Region 7 for November 2017				
Company	City	County	# of workers affected	Notice Date

There are no WARN Notices for November 2017 for EGR 7.

Source: Indiana Department of Workforce Development, WARN Notices | For information on WARN Act requirements, you may go to the U.S. Department of Labor Employment Training Administration Fact Sheet:

<https://www.doleta.gov/programs/factsheet/warn.htm>

Unemployment Claims: November 2017

Region 7

Initial Claims

11/04/17 - 94(D)

11/11/17 - 88(D)

11/18/17 - 107(D)

11/25/17 - 55(D)

Continued Claims

11/04/17 - 453

11/11/17 - 494

11/18/17 - 496

11/25/17 - 537

Total Claims

11/04/17 - 547

11/11/17 - 582

11/18/17 - 603

11/25/17 - 592

State of Indiana

Initial Claims

11/04/17 - 2,385

11/11/17 - 2,490

11/18/17 - 2,697

11/25/17 - 2,020

Continued Claims

11/04/17 - 12,597

11/11/17 - 12,951

11/18/17 - 12,276

11/25/17 - 13,251

Total Claims

11/04/17 - 14,982

11/11/17 - 15,441

11/18/17 - 14,973

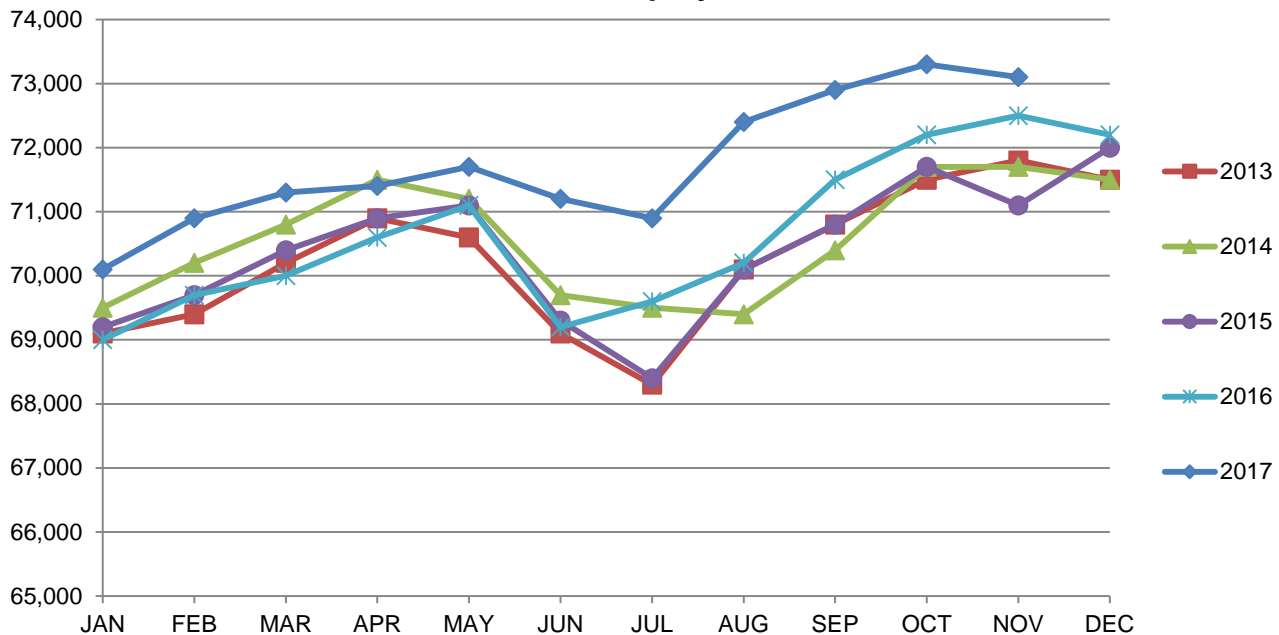
11/25/17 - 15,271

(D) Indicates item is affected by non-disclosure issues relating to industry or ownership status | Source: Indiana Department of Workforce Development, Research and Development

Terre Haute MSA							
Wage and Salaried Employment	November 2017			# Change	% Change	# Change	% Change
Industry	Nov-17	Oct-17	Nov-16	Oct-17 to Nov-17		Nov-16 to Nov-17	
Total Nonfarm	73,100	73,300	72,500	-200	-0.3%	600	0.8%
Total Private	59,900	60,000	59,000	-100	-0.2%	900	1.5%
Goods Producing	14,200	14,500	14,100	-300	-2.1%	100	0.7%
Service-Providing	58,900	58,800	58,400	100	0.2%	500	0.9%
Private Service Providing	45,700	45,500	44,900	200	0.4%	800	1.8%
Mining, Logging and Construction	3,800	3,800	3,600	0	0.0%	200	5.6%
Manufacturing	10,400	10,700	10,500	-300	-2.8%	-100	-1.0%
Trade, Transportation, and Utilities	13,200	13,100	13,600	100	0.8%	-400	-2.9%
Wholesale Trade	1,500	1,600	1,600	-100	-6.3%	-100	-6.3%
Retail Trade	9,400	9,200	9,500	200	2.2%	-100	-1.1%
Transportation, Warehousing, and Utilities	2,300	2,300	2,500	0	0.0%	-200	-8.0%
Information	500	500	600	0	0.0%	-100	-16.7%
Financial Activities	2,600	2,600	2,500	0	0.0%	100	4.0%
Professional and Business Services	5,700	5,500	5,400	200	3.6%	300	5.6%
Education and Health Services	13,100	13,100	12,200	0	0.0%	900	7.4%
Leisure and Hospitality	7,700	7,700	7,700	0	0.0%	0	0.0%
Other Services	2,900	3,000	2,900	-100	-3.3%	0	0.0%
Total Government	13,200	13,300	13,500	-100	-0.8%	-300	-2.2%
Federal Government	1,200	1,300	1,300	-100	-7.7%	-100	-7.7%
State Government	5,000	5,000	5,000	0	0.0%	0	0.0%
Local Government	7,000	7,000	7,200	0	0.0%	-200	-2.8%
Local Government Educational Services	3,400	3,400	3,600	0	0.0%	-200	-5.6%

Source: Indiana Dept of Workforce Development, Research and Analysis, Current Employment Statistics

Terre Haute MSA Employment Trends



Source: Indiana Department of Workforce Development, Research & Analysis, Current Employment Statistics | Note: Historical data for the most recent 5 years (both seasonally adjusted and not seasonally adjusted) are revised near the beginning of each calendar year, prior to the release of January estimates for statewide data.

Frequently Listed Jobs	
Top 20 job listings in Region 7 in the past month	
Rank	Occupations
1	Registered Nurses
2	Retail Salespersons
3	Mobile Heavy Equipment Mechanics, Except Engines
4	Licensed Practical and Licensed Vocational Nurses
5	Molding and Casting Workers
6	Security Guards
7	Operating Engineers and Other Construction Equipment Operators
8	Psychiatric Technicians
9	Chief Executives
10	Engineers, All Other
11	Production Workers, All Other
12	Social and Human Service Assistants
13	Stock Clerks- Stockroom, Warehouse, or Storage Yard
14	Aircraft Structure, Surfaces, Rigging, and Systems Assemblers
15	Assemblers and Fabricators, All Other
16	Dietetic Technicians
17	Electrical Power-Line Installers and Repairers
18	Interviewers, Except Eligibility and Loan
19	Janitors and Cleaners, Except Maids and Housekeeping Cleaners
20	Maids and Housekeeping Cleaners

Source: Indiana Workforce Development, Indiana Career Connect

Applicant Pool	
Top 20 occupations desired by applicants on their resumes in the past 12 months	
Occupations	# of applicants
Production Workers, All Other	481
Helpers--Production Workers	319
Assemblers and Fabricators, All Other	317
Cashiers	251
Customer Service Representatives	202
Laborers and Freight, Stock, and Material Movers, Hand	179
Nursing Assistants	166
Construction and Related Workers, All Other	131
Stock Clerks and Order Fillers	131
Combined Food Preparation and Serving Workers, Including Fast Food	129
Welders, Cutters, Solderers, and Brazers	127
Managers, All Other	126
Office Clerks, General	123
Construction Laborers	120
Carpenters	104
Office and Administrative Support Workers, All Other	103
Industrial Truck and Tractor Operators	92
Heavy and Tractor-Trailer Truck Drivers	91
Janitors and Cleaners, Except Maids and Housekeeping Cleaners	91
Retail Salespersons	88

Source: Indiana Workforce Development, Indiana Career Connect

Projections of industry employment, 2016–26 December 2017

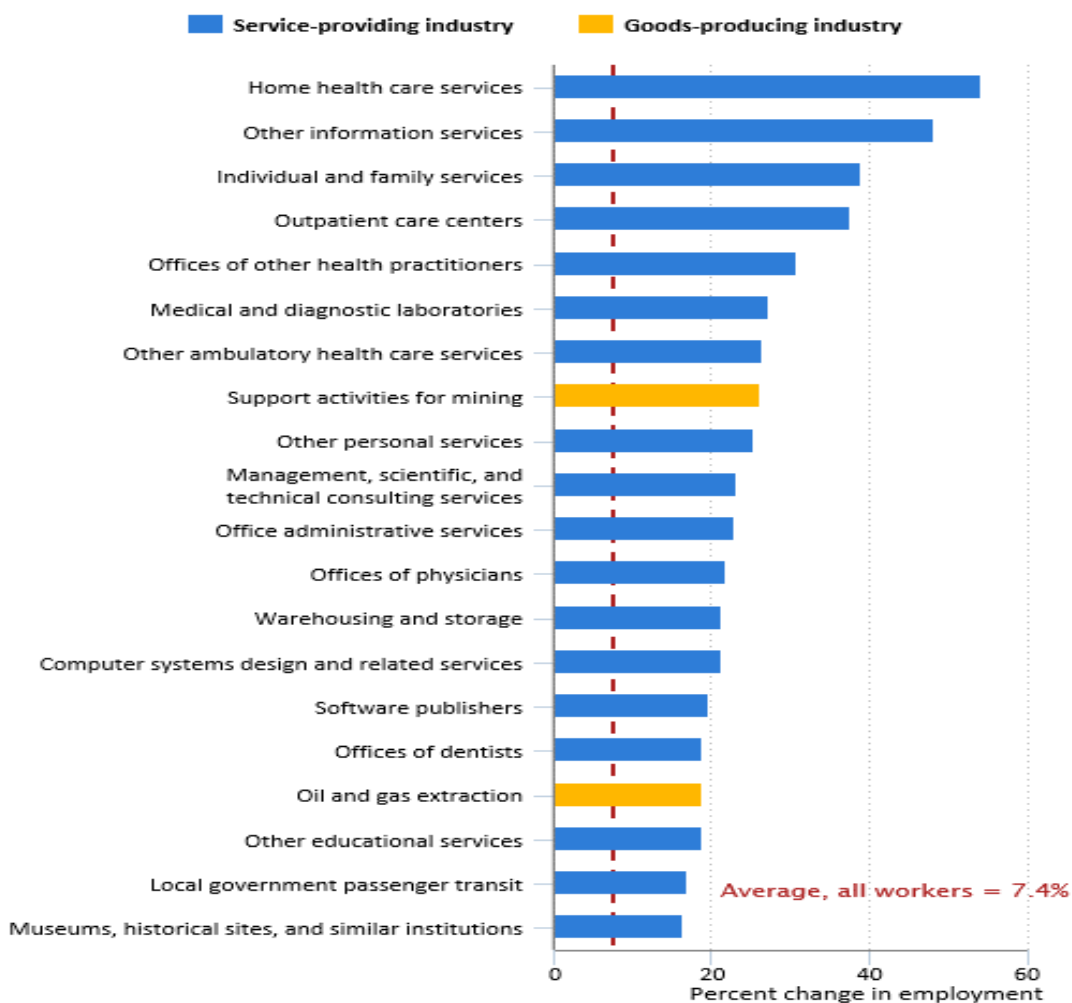
Knowing which industries are projected to grow or decline helps jobseekers make more informed career decisions. The charts in this article show employment change in particular industries from 2016 to 2026 as projected by the U.S. Bureau of Labor Statistics (BLS). Industry employment projections are shown in terms of percent change (the rate of job growth or decline) and numeric change (the total number of jobs projected to be added or lost) over the 2016–26 decade. The average growth rate of 7 percent for all wage and salary workers is shown as a dashed vertical line in [chart 1](#).

Fastest growing industries

As chart 1 shows, the fastest employment growth is projected to be concentrated in industries that provide services.

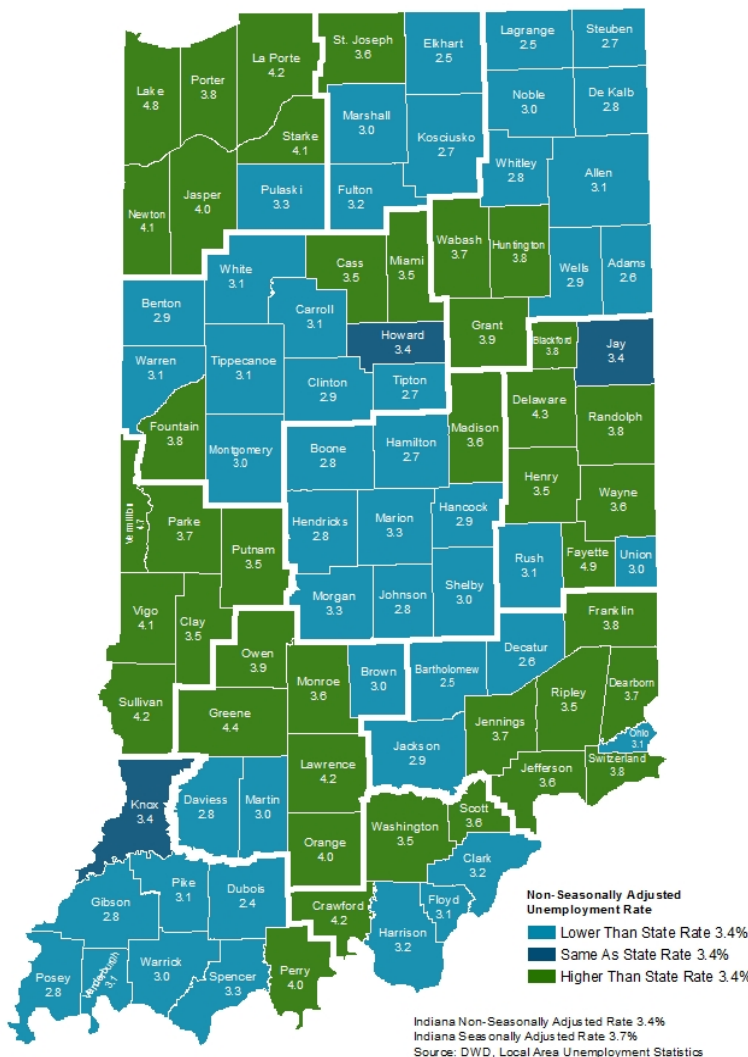
Chart 1. Fastest growing industries

Percent growth in employment of wage and salary workers, by detailed industry, projected 2016–26



Source: U.S. Bureau of Labor Statistics.

County Unemployment Rates November 2017



INDIANA
DEPARTMENT OF
WORKFORCE
DEVELOPMENT

Questions?

Please contact the DWD
Research and Analysis
Regional Labor Analyst
listed below:

Kim Stevenson

Regional Labor Analyst
Research and Analysis

[Indiana Department of
Workforce Development](http://Indiana Department of Workforce Development)

30 North 8th St

Terre Haute, IN 47807

812-242-6427

kstevenson@dwd.in.gov