



HOOSIERS BY THE NUMBERS

Your premier source for labor market information for Indiana.



INDIANA
DEPARTMENT OF
WORKFORCE
DEVELOPMENT

LABOR MARKET REVIEW



December 2019 Labor Market Review

Reported by: Kent Sellers

Regional Workforce Analyst
[Email Kent](#)
wsellers@dwd.in.gov

Tel: 260-469-4313



INDIANA
DEPARTMENT OF
WORKFORCE
DEVELOPMENT

LABOR MARKET REVIEW

Economic Growth Region 6

Statistical Data Report for December 2019, Released February 2020

State Employment and Unemployment

Unemployment rates were lower in December in 11 states, higher in 4 states, and stable in 35 states and the District of Columbia, the U.S. Bureau of Labor Statistics reported. Eight states had jobless rate decreases from a year earlier, 1 state had an increase, and 41 states and the District had little or no change. The national unemployment rate, 3.5 percent, was unchanged over the month but was 0.4 percentage point lower than in December 2018.

Nonfarm payroll employment increased in 3 states in December 2019 and was essentially unchanged in 47 states and the District of Columbia. Over the year, 26 states added nonfarm payroll jobs and 24 states and the District were essentially unchanged.

South Carolina, Utah, and Vermont had the lowest unemployment rates in December, 2.3 percent each. The rates in Colorado (2.5 percent), Florida (3.0 percent), Georgia (3.2 percent), Illinois (3.7 percent), Oregon (3.7 percent), South Carolina (2.3 percent), Utah (2.3 percent), and Washington (4.3 percent) set new series lows. (All state series begin in 1976.) Alaska had the highest jobless rate, 6.1 percent. In total, 15 states had unemployment rates lower than the U.S. figure of 3.5 percent, 12 states and the District of Columbia had higher rates, and 23 states had rates that were not appreciably different from that of the nation.



Economic Growth Region (EGR) 6

Blackford, Delaware, Fayette, Henry, Jay, Randolph, Rush, Union, and Wayne Counties

Unemployment Rates by State (seasonally adjusted): December 2019

U.S. - 3.5%

Illinois - 3.7%

Indiana - 3.2%

Kentucky - 4.3%

Michigan - 3.9%

Ohio - 4.2%

Source: U.S. Department of Labor, Bureau of Labor Statistics

Unemployment Rank by County (of 92 counties): December 2019

#3 - Fayette (4.7%)

#8 - Blackford (3.9%)

#13 - Randolph (3.8%)

#16 - Delaware (3.5%)

#28 - Wayne (3.3%)

#40 - Henry (3%)

#53 - Union (2.9%)

#56 - Jay (2.8%)

#83 - Rush (2.3%)

Source: Indiana Department of Workforce Development, Research and Development, Local Area Unemployment Statistics

December 2019 Labor Force Estimates (not seasonally adjusted)						
Area	Labor Force	Employed	Unemployed	Dec-19	Nov-19	Dec-18
U.S.	164,007,000	158,504,000	5,503,000	3.4%	3.3%	3.7%
IN	3,352,305	3,250,841	101,464	3.0%	3.2%	3.4%
EGR 6	153,274	148,136	5,138	3.4%	3.5%	3.7%
Muncie MSA	54,238	52,356	1,882	3.5%	3.7%	3.9%
Blackford Co.	4,872	4,681	191	3.9%	4.0%	3.8%
Delaware Co.	54,238	52,356	1,882	3.5%	3.7%	3.9%
Fayette Co.	8,575	8,172	403	4.7%	4.8%	4.6%
Henry Co.	21,928	21,273	655	3.0%	3.1%	3.4%
Jay Co.	9,403	9,140	263	2.8%	2.8%	3.1%
Randolph Co.	11,225	10,796	429	3.8%	3.7%	3.9%
Rush Co.	8,854	8,653	201	2.3%	2.5%	2.9%
Union Co.	3,716	3,609	107	2.9%	2.9%	3.2%
Wayne Co.	30,463	29,456	1,007	3.3%	3.4%	3.5%
Connersville	4,372	4,131	241	5.5%	5.8%	5.3%
Muncie	31,229	30,072	1,157	3.7%	4.1%	4.1%
New Castle	7,535	7,306	229	3.0%	3.1%	3.5%
Richmond	14,856	14,311	545	3.7%	3.9%	3.8%

Source: Indiana Department of Workforce Development, Research & Analysis, Local Area Unemployment Statistics | Unemployment Statistics Released: 01/20 | Notes: The data displayed are presented as estimates only. The most recent month's data are always preliminary and are revised when the next month's data are released.

Consumer Price Index (CPI-U Change), Unadjusted Percent Change to December 2019 from				
CPI Item	Dec-18	Nov-19	Dec-18	Nov-19
	U.S. City		Midwest Region*	
All Items	2.3%	-0.1%	2.3%	0%
Food & Beverages	1.7%	0.1%	1.8%	0.1%
Housing	2.6%	0.1%	2.3%	0.3%
Apparel	-1.2%	-3.2%	-1.4%	-4%
Transportation	1.9%	-0.6%	3.1%	-0.1%
Medical Care	4.6%	0.4%	3.6%	-0.4%
Recreation	1.5%	0.1%	2%	0.2%
Education & Communication	1.4%	-0.1%	0.8%	0%
Other Goods & Services	2.3%	-0.2%	2.4%	-0.3%

*Midwest region = Midwest Urban Average. Midwest Region includes Illinois, Indiana, Iowa, Kansas, Michigan, Minnesota, Missouri, Nebraska, North Dakota, Ohio, South Dakota and Wisconsin | Source: U.S. Bureau of Labor Statistics

**Unemployment Claims:
December 2019**

Region 6

Initial Claims
12/07/19 - 165(D)
12/14/19 - 161(D)
12/21/19 - 155(D)
12/28/19 - 124(D)

Continued Claims
12/07/19 - 777
12/14/19 - 860
12/21/19 - 912
12/28/19 - 1,054

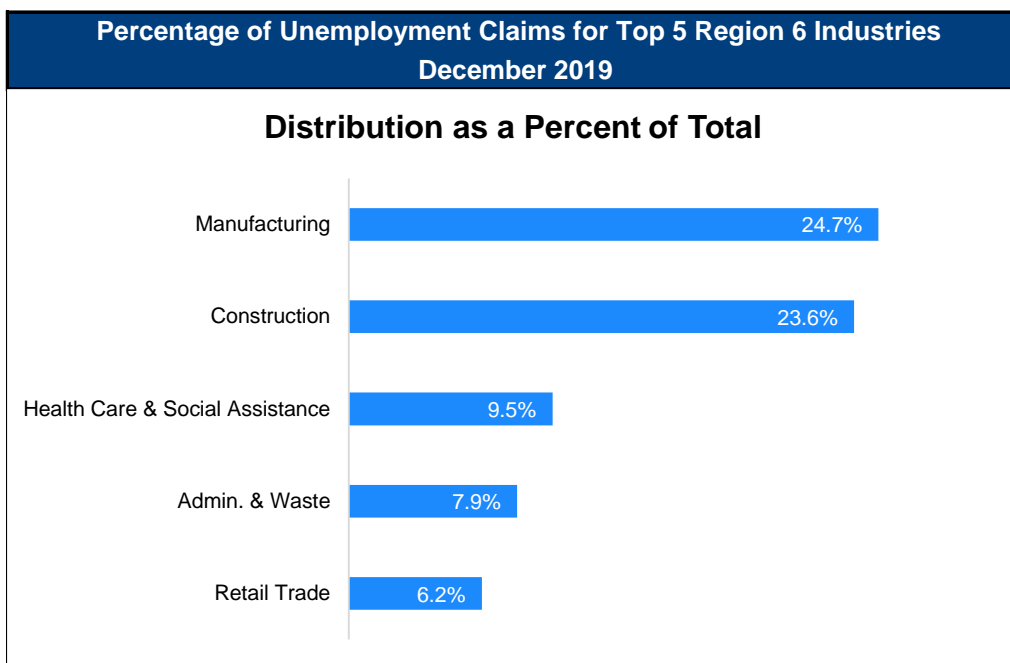
Total Claims
12/07/19 - 942
12/14/19 - 1,021
12/21/19 - 1,067
12/28/19 - 1,178

State of Indiana

Initial Claims
12/07/19 - 3,819
12/14/19 - 3,256
12/21/19 - 3,733
12/28/19 - 3,232

Continued Claims
12/07/19 - 13,763
12/14/19 - 15,184
12/21/19 - 16,121
12/28/19 - 18,423

Total Claims
12/07/19 - 17,582
12/14/19 - 18,440
12/21/19 - 19,854
12/28/19 - 21,655



Source: Indiana Department of Workforce Development, Research and Analysis

WARN Notices

WARN Notices for Region 6 for December 2019				
Company	City	County	# of workers affected	Notice Date

There are no WARN Notices for December 2019 for EGR 6.

Source: Indiana Department of Workforce Development, WARN Notices | For information on WARN Act requirements, you may go to the U.S. Department of Labor Employment Training Administration Fact Sheet:

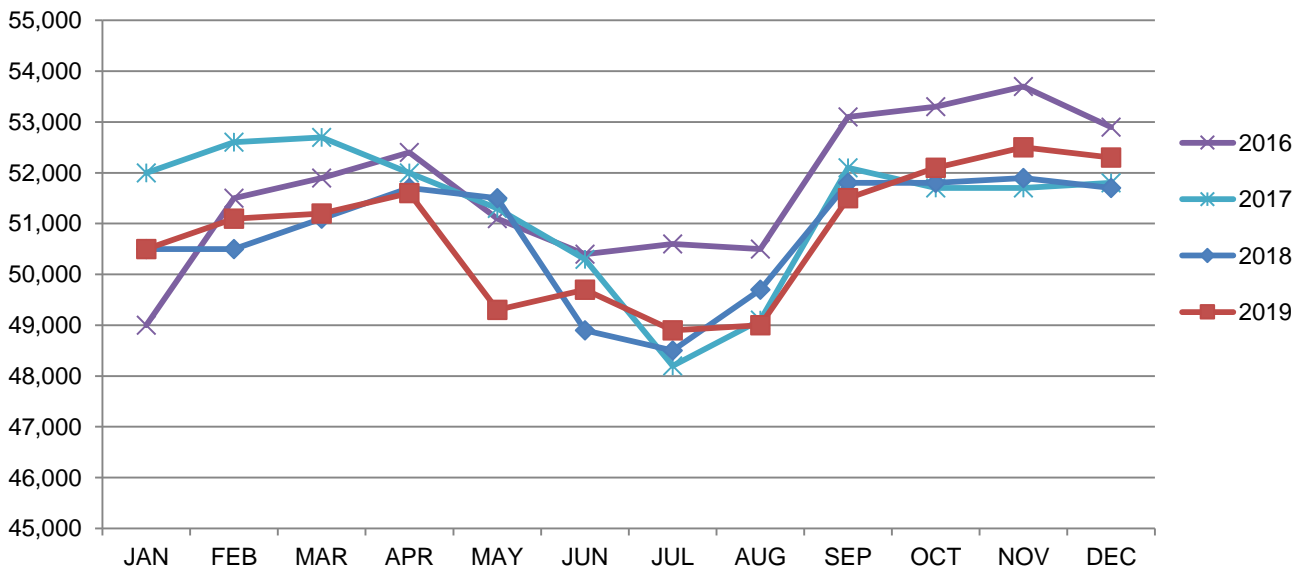
<https://www.dolela.gov/programs/factsht/warn.htm>

(D) indicates item is affected by non-disclosure issues relating to industry or ownership status | Source: Indiana Department of Workforce Development, Research and Development

Muncie MSA							
Wage and Salaried Employment	December 2019			# Change	% Change	# Change	% Change
Industry	Dec-19	Nov-19	Dec-18	Nov-19 to Dec-19	Dec-18 to Dec-19		
Total Nonfarm	52,300	52,500	51,700	-200	-0.4%	600	1.2%
Total Private	39,600	39,900	38,700	-300	-0.8%	900	2.3%
Goods Producing	5,900	6,000	5,900	-100	-1.7%	0	0.0%
Service-Providing	46,400	46,500	45,800	-100	-0.2%	600	1.3%
Private Service Providing	33,700	33,900	32,800	-200	-0.6%	900	2.7%
Mining, Logging and Construction	1,600	1,700	1,600	-100	-5.9%	0	0.0%
Manufacturing	4,300	4,300	4,300	0	0.0%	0	0.0%
Trade, Transportation, and Utilities	8,900	8,800	9,000	100	1.1%	-100	-1.1%
Wholesale Trade	1,000	1,000	1,100	0	0.0%	-100	-9.1%
Retail Trade	6,500	6,400	6,500	100	1.6%	0	0.0%
Transportation, Warehousing, and Utilities	1,400	1,400	1,400	0	0.0%	0	0.0%
Information	300	300	300	0	0.0%	0	0.0%
Financial Activities	2,300	2,300	2,200	0	0.0%	100	4.6%
Education and Health Services	9,500	9,500	9,400	0	0.0%	100	1.1%
Leisure and Hospitality	5,200	5,300	5,300	-100	-1.9%	-100	-1.9%
Other Services	1,900	1,900	1,900	0	0.0%	0	0.0%
Government	12,700	12,600	13,000	100	0.8%	-300	-2.3%
State Government	8,700	8,600	8,900	100	1.2%	-200	-2.3%
State Government Educational Services	8,500	8,400	8,700	100	1.2%	-200	-2.3%
State Government Excluding Education	200	200	200	0	0.0%	0	0.0%
Local Government	3,700	3,700	3,700	0	0.0%	0	0.0%
Local Government Educational Services	2,200	2,200	2,200	0	0.0%	0	0.0%
Local Government excluding Educational Services	1,500	1,500	1,500	0	0.0%	0	0.0%

Source: Indiana Dept of Workforce Development, Research and Analysis, Current Employment Statistics

Muncie MSA Employment Trends



Source: Indiana Department of Workforce Development, Research & Analysis, Current Employment Statistics | Note: Historical data for the most recent 4 years (both seasonally adjusted and not seasonally adjusted) are revised near the beginning of each calendar year, prior to the release of January estimates for statewide data.

Frequently Listed Jobs	
Top 20 job listings in Region 6 in the past month	
Rank	Occupations
1	Amusement and Recreation Attendants
2	Nursery Workers
3	Landscaping and Groundskeeping Workers
4	Substance Abuse and Behavioral Disorder Counselors
5	Customer Service Representatives
6	Counter Attendants, Cafeteria, Food Concession, and Coffee Shop
7	Computer User Support Specialists
8	Educational, Guidance, School, and Vocational Counselors
9	Tellers
10	Therapists, All Other
11	Production Workers, All Other
12	Security Guards
13	Heavy and Tractor-Trailer Truck Drivers
14	Licensed Practical and Licensed Vocational Nurses
15	Social and Human Service Assistants
16	Anthropologists
17	Bill and Account Collectors
18	Heating and Air Conditioning Mechanics and Installers
19	Light Truck or Delivery Services Drivers
20	Accountants

Source: Indiana Workforce Development, Indiana Career Connect

Applicant Pool	
Top 20 occupations desired by applicants on their resumes in the past 12 months	
Occupations	# of applicants
Production Workers, All Other	574
Assemblers and Fabricators, All Other	378
Helpers--Production Workers	241
Customer Service Representatives	197
Laborers and Freight, Stock, and Material Movers, Hand	175
Cashiers	169
Office Clerks, General	119
Stock Clerks and Order Fillers	103
Team Assemblers	100
Nursing Assistants	99
Office and Administrative Support Workers, All Other	96
Managers, All Other	94
Construction Laborers	81
Combined Food Preparation and Serving Workers, Including Fast Food	81
Retail Salespersons	80
First-Line Supervisors of Production and Operating Workers	79
Inspectors, Testers, Sorters, Samplers, and Weighers	76
Extraction Workers, All Other	75
Industrial Truck and Tractor Operators	74
Administrative Services Managers	63

Source: Indiana Workforce Development, Indiana Career Connect

County Unemployment Rates December 2019



INDIANA
DEPARTMENT OF
WORKFORCE
DEVELOPMENT

Questions?

Please contact the
Regional Labor Analyst
listed below:

Kent Sellers

[Indiana Department of
Workforce Development](http://Indiana Department of Workforce Development)

200 E. Main St., SE 910
Fort Wayne, IN 46802

260-469-4313

WSellers@dwd.in.gov

