



## July 2019 Labor Market Review

**Reported by: Kent Sellers**

Regional Workforce Analyst  
[Email Kent](#)  
wsellers@dwd.in.gov

Tel: 260-469-4313

## LABOR MARKET REVIEW

# Economic Growth Region 6

Statistical Data Report for July 2019, Released September 2019

## State Employment and Unemployment

Unemployment rates were lower in July in 6 states, higher in 2 states, and stable in 42 states and the District of Columbia, the U.S. Bureau of Labor Statistics reported. Three states had jobless rate decreases from a year earlier, 1 state had an increase, and 46 states and the District had little or no change. The national unemployment rate, 3.7 percent, was unchanged over the month and little changed from July 2018.

Nonfarm payroll employment increased in 5 states in July 2019 and was essentially unchanged in 45 states and the District of Columbia. Over the year, 25 states added nonfarm payroll jobs and 25 states and the District were essentially unchanged.

Vermont had the lowest unemployment rate in July, 2.1 percent. The rates in Alabama (3.3 percent), Arkansas (3.4 percent), Maine (3.0 percent), and New Jersey (3.3 percent) set new series lows. (All state series begin in 1976.) Alaska had the highest jobless rate, 6.3 percent. In total, 14 states had unemployment rates lower than the U.S. figure of 3.7 percent, 8 states and the District of Columbia had higher rates, and 28 states had rates that were not appreciably different from that of the nation.



## Economic Growth Region (EGR) 6

Blackford, Delaware, Fayette, Henry, Jay, Randolph, Rush, Union, and Wayne Counties

### Unemployment Rates by State (seasonally adjusted): July 2019

**U.S. - 3.7%**

Illinois - 4.2%

**Indiana - 3.4%**

Kentucky - 4.3%

Michigan - 4.3%

Ohio - 4%

Source: U.S. Department of Labor, Bureau of Labor Statistics

### Unemployment Rank by County (of 92 counties): July 2019

#2 - Fayette (5.1%)

#6 - Delaware (4.3%)

#16 - Blackford (3.9%)

#20 - Wayne (3.9%)

#24 - Randolph (3.8%)

#43 - Henry (3.5%)

#53 - Union (3.4%)

#76 - Jay (3%)

#80 - Rush (2.9%)

Source: Indiana Department of Workforce Development, Research and Development, Local Area Unemployment Statistics

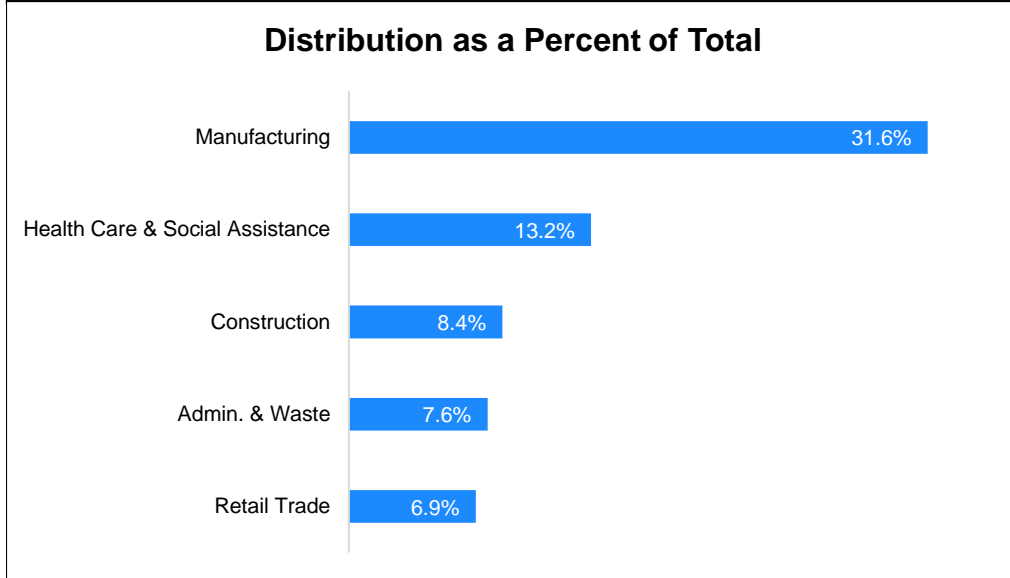
July 2019 Labor Force Estimates (not seasonally adjusted)						
Area	Labor Force	Employed	Unemployed	Jul-19	Jun-19	Jul-18
U.S.	164,941,000	158,385,000	6,556,000	4.0%	3.8%	4.1%
IN	3,419,895	3,297,672	122,223	3.6%	3.3%	3.6%
EGR 6	155,177	149,113	6,064	3.9%	3.7%	3.9%
Muncie MSA	53,249	50,982	2,267	4.3%	4.0%	4.2%
Blackford Co.	5,129	4,931	198	3.9%	3.7%	3.7%
Delaware Co.	53,249	50,982	2,267	4.3%	4.0%	4.2%
Fayette Co.	9,111	8,648	463	5.1%	4.7%	4.9%
Henry Co.	22,319	21,527	792	3.5%	3.2%	3.6%
Jay Co.	9,720	9,427	293	3.0%	2.9%	3.3%
Randolph Co.	11,542	11,105	437	3.8%	3.5%	3.9%
Rush Co.	9,247	8,982	265	2.9%	2.6%	2.9%
Union Co.	3,824	3,694	130	3.4%	3.4%	3.3%
Wayne Co.	31,036	29,817	1,219	3.9%	3.6%	3.9%
Connersville	4,643	4,371	272	5.9%	5.1%	5.6%
Muncie	30,722	29,283	1,439	4.7%	4.4%	4.7%
New Castle	7,674	7,393	281	3.7%	3.4%	3.8%
Richmond	15,173	14,487	686	4.5%	4.0%	4.3%

Source: Indiana Department of Workforce Development, Research & Analysis, Local Area Unemployment Statistics | Unemployment Statistics Released: 08/19 | Notes: The data displayed are presented as estimates only. The most recent month's data are always preliminary and are revised when the next month's data are released.

Consumer Price Index (CPI-U Change), Unadjusted Percent Change to July 2019 from				
CPI Item	Jul-18	Jun-19	Jul-18	Jun-19
	U.S. City		Midwest Region*	
<b>All Items</b>	<b>1.8%</b>	<b>0.2%</b>	<b>1.5%</b>	<b>0.2%</b>
Food & Beverages	1.8%	0.1%	1.3%	-0.1%
Housing	3.0%	0.2%	2.7%	0.2%
Apparel	-0.5%	-1.3%	0.3%	-0.2%
Transportation	-0.3%	0.2%	-0.1%	0.5%
Medical Care	2.6%	0.4%	2.4%	0.3%
Recreation	0.7%	0.0%	-0.6%	0.2%
Education & Communication	0.6%	0.2%	-0.7%	-0.2%
Other Goods & Services	1.9%	0.5%	2.2%	0.6%

\*Midwest region = Midwest Urban Average. Midwest Region includes Illinois, Indiana, Iowa, Kansas, Michigan, Minnesota, Missouri, Nebraska, North Dakota, Ohio, South Dakota and Wisconsin | Source: U.S. Bureau of Labor Statistics

### Percentage of Unemployment Claims for Top 5 Region 6 Industries July 2019



Source: Indiana Department of Workforce Development, Research and Analysis

## WARN Notices

WARN Notices for Region 6 for July 2019				
Company	City	County	# of workers affected	Notice Date
Packer's Sanitation Services	Cambridge City	Wayne	55	7/26/2019

Source: Indiana Department of Workforce Development, WARN Notices | For information on WARN Act requirements, you may go to the U.S. Department of Labor Employment Training Administration Fact Sheet:

<https://www.dolela.gov/programs/factsht/warn.htm>

## Unemployment Claims: July 2019

### Region 6

#### Initial Claims

07/06/19 - 61(D)

07/13/19 - 81(D)

07/20/19 - 69(D)

07/27/19 - 55(D)

#### Continued Claims

07/06/19 - 615

07/13/19 - 599

07/20/19 - 604

07/27/19 - 601

#### Total Claims

07/06/19 - 676

07/13/19 - 680

07/20/19 - 673

07/27/19 - 656

### State of Indiana

#### Initial Claims

07/06/19 - 1,746

07/13/19 - 3,118

07/20/19 - 1,977

07/27/19 - 1,797

#### Continued Claims

07/06/19 - 11,563

07/13/19 - 11,807

07/20/19 - 11,349

07/27/19 - 11,264

#### Total Claims

07/06/19 - 13,309

07/13/19 - 14,925

07/20/19 - 13,326

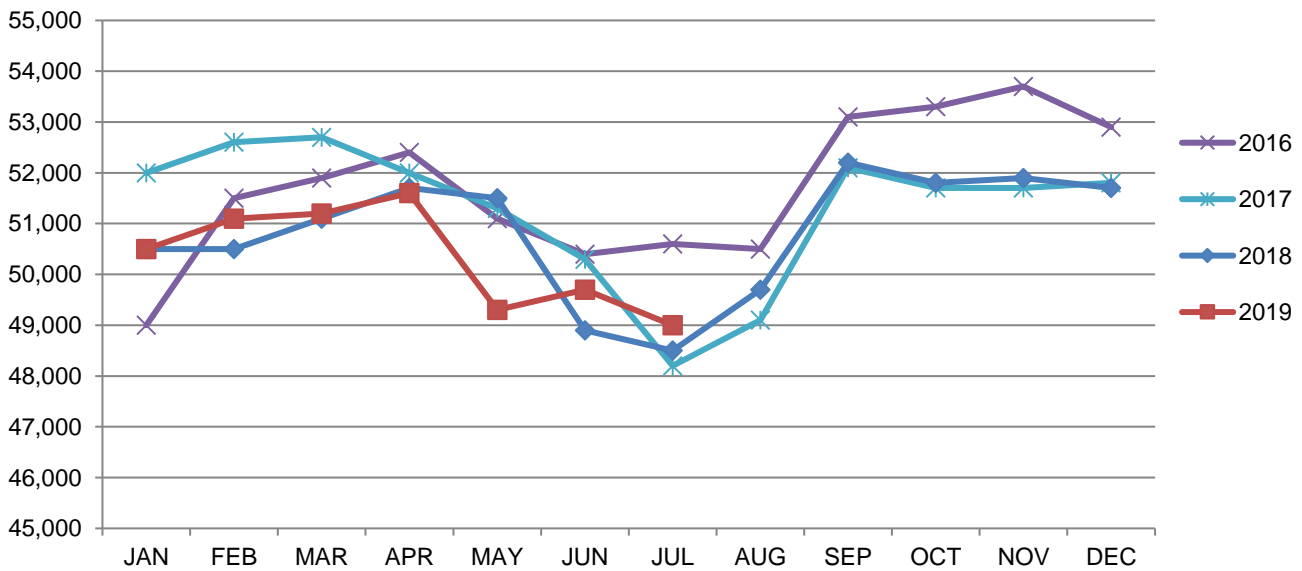
07/27/19 - 13,061

(D) indicates item is affected by non-disclosure issues relating to industry or ownership status | Source: Indiana Department of Workforce Development, Research and Development

Muncie MSA							
Wage and Salaried Employment	July 2019			# Change	% Change	# Change	% Change
Industry	Jul-19	Jun-19	Jul-18	Jun-19 to Jul-19		Jul-18 to Jul-19	
<b>Total Nonfarm</b>	<b>49,000</b>	<b>49,700</b>	<b>48,500</b>	<b>-700</b>	<b>-1.4%</b>	<b>500</b>	<b>1.0%</b>
<b>Total Private</b>	<b>39,300</b>	<b>39,100</b>	<b>38,700</b>	<b>200</b>	<b>0.5%</b>	<b>600</b>	<b>1.6%</b>
Goods Producing	6,100	6,000	5,900	100	1.7%	200	3.4%
Service-Providing	42,900	43,700	42,600	-800	-1.8%	300	0.7%
Private Service Providing	33,200	33,100	32,800	100	0.3%	400	1.2%
Mining, Logging and Construction	1,800	1,800	1,700	0	0.0%	100	5.9%
Manufacturing	4,300	4,200	4,200	100	2.4%	100	2.4%
Trade, Transportation, and Utilities	8,800	8,800	8,800	0	0.0%	0	0.0%
Wholesale Trade	1,100	1,100	1,100	0	0.0%	0	0.0%
Retail Trade	6,300	6,300	6,400	0	0.0%	-100	-1.6%
Transportation, Warehousing, and Utilities	1,400	1,400	1,300	0	0.0%	100	7.7%
Information	300	300	300	0	0.0%	0	0.0%
Financial Activities	2,300	2,300	2,300	0	0.0%	0	0.0%
Education and Health Services	9,400	9,400	9,200	0	0.0%	200	2.2%
Leisure and Hospitality	5,700	5,700	5,300	0	0.0%	400	7.6%
Other Services	1,900	1,900	1,800	0	0.0%	100	5.6%
Government	9,700	10,600	9,800	-900	-8.5%	-100	-1.0%
State Government	6,100	6,800	6,300	-700	-10.3%	-200	-3.2%
State Government Educational Services	5,900	6,600	6,100	-700	-10.6%	-200	-3.3%
State Government Excluding Education	200	200	200	0	0.0%	0	0.0%
Local Government	3,300	3,500	3,400	-200	-5.7%	-100	-2.9%
Local Government Educational Services	1,700	1,900	1,800	-200	-10.5%	-100	-5.6%
Local Government excluding Educational Services	1,600	1,600	1,600	0	0.0%	0	0.0%

Source: Indiana Dept of Workforce Development, Research and Analysis, Current Employment Statistics

### Muncie MSA Employment Trends



Source: Indiana Department of Workforce Development, Research & Analysis, Current Employment Statistics | Note: Historical data for the most recent 4 years (both seasonally adjusted and not seasonally adjusted) are revised near the beginning of each calendar year, prior to the release of January estimates for statewide data.

<b>Frequently Listed Jobs</b>	
<b>Top 20 job listings in Region 6 in the past month</b>	
<b>Rank</b>	<b>Occupations</b>
1	Amusement and Recreation Attendants
2	Production Workers, All Other
3	Customer Service Representatives
4	Tellers
5	Sewing Machine Operators
6	Financial Specialists, All Other
7	Retail Salespersons
8	Therapists, All Other
9	First-Line Supervisors of Transportation and Material-Moving Machine and Vehicle Operators
10	Managers, All Other
11	Educational, Guidance, School, and Vocational Counselors
12	Teacher Assistants
13	Automotive Master Mechanics
14	Heavy and Tractor-Trailer Truck Drivers
15	Light Truck or Delivery Services Drivers
16	Machinists
17	Social and Human Service Assistants
18	Business Teachers, Postsecondary
19	Cooks, Institution and Cafeteria
20	Farmworkers, Farm, Ranch, and Aquacultural Animals

Source: Indiana Workforce Development, Indiana Career Connect

<b>Applicant Pool</b>	
<b>Top 20 occupations desired by applicants on their resumes in the past 12 months</b>	
<b>Occupations</b>	<b># of applicants</b>
Production Workers, All Other	492
Assemblers and Fabricators, All Other	334
Helpers--Production Workers	223
Customer Service Representatives	190
Laborers and Freight, Stock, and Material Movers, Hand	150
Cashiers	147
Office Clerks, General	111
Stock Clerks and Order Fillers	87
Team Assemblers	87
Nursing Assistants	86
Construction Laborers	82
Managers, All Other	77
Combined Food Preparation and Serving Workers, Including Fast Food	73
Office and Administrative Support Workers, All Other	71
Retail Salespersons	63
Receptionists and Information Clerks	63
Shipping, Receiving, and Traffic Clerks	59
Inspectors, Testers, Sorters, Samplers, and Weighers	56
Secretaries and Administrative Assistants, Except Legal, Medical, and Executive	54
Packers and Packagers, Hand	54

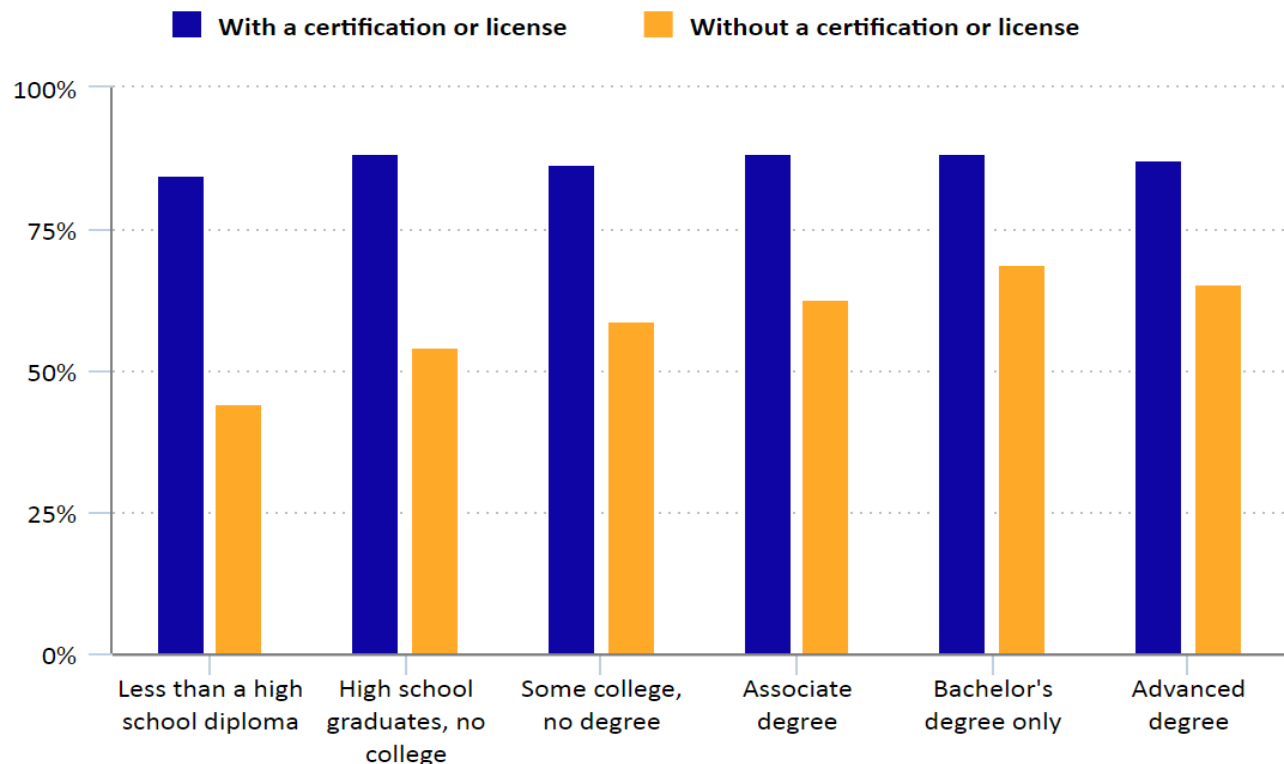
Source: Indiana Workforce Development, Indiana Career Connect

## Labor Force Participation Rates are Higher for People with Professional Certifications or Licenses

(Excerpted from the Bureau of Labor Statistics, U.S. Department of Labor, *The Economics Daily*)

Labor force participation rates are substantially higher for people who have a professional certification or occupational license than for those without such credentials. In 2018, the rate was 87.7 percent for workers who had such credentials, compared with 57.8 percent for those without them. In addition, people with certifications or licenses had higher participation rates at all education levels.

### Labor force participation rates of people 25 years and older, by professional certification and licensing status and educational attainment, 2018



For example, among workers with a certification or license in 2018, labor force participation rates ranged from 84.8 percent for those with less than a high school diploma to 88.5 percent for those with a bachelor's degree (and no further education). By contrast, the rates for people without a certification or license ranged from 44.4 percent for those with less than a high school diploma to 68.8 percent for those with a bachelor's degree only.

These data are from the Current Population Survey and are annual averages for 2018. For more information, see "Professional certifications and occupational licenses: evidence from the Current Population Survey," by Evan Cunningham, *Monthly Labor Review*, June 2019.

# County Unemployment Rates July 2019



INDIANA  
DEPARTMENT OF  
**WORKFORCE**  
DEVELOPMENT

## Questions?

Please contact the  
Regional Labor Analyst  
listed below:

Kent Sellers

[Indiana Department of  
Workforce Development](http://Indiana Department of Workforce Development)

200 E. Main St., SE 910

Fort Wayne, IN 46802

260-469-4313

[WSellers@dwd.in.gov](mailto:WSellers@dwd.in.gov)

