

LABOR MARKET REVIEW



**May 2019
Labor Market Review**

Reported by: Kent Sellers

Regional Workforce Analyst
[Email Kent](#)
wsellers@dwd.in.gov

Tel: 260-469-4313

LABOR MARKET REVIEW

Economic Growth Region 6

Statistical Data Report for May 2019, Released July 2019

State Employment and Unemployment

Unemployment rates were lower in May in 6 states, higher in 2 states, and stable in 42 states and the District of Columbia, the U.S. Bureau of Labor Statistics reported. Five states had jobless rate decreases from a year earlier, 1 state had an increase, and 44 states and the District had little or no change. The national unemployment rate remained at 3.6 percent in May and was little changed from May 2018.

Nonfarm payroll employment increased in Washington in May 2019 and was essentially unchanged in 49 states and the District of Columbia. Over the year, 24 states added nonfarm payroll jobs and 26 states and the District were essentially unchanged.

Vermont had the lowest unemployment rate in May, 2.1 percent. The rates in Texas (3.5 percent) and Vermont (2.1 percent) set new series lows. (All state series begin in 1976.) Alaska had the highest jobless rate, 6.4 percent. In total, 12 states had unemployment rates lower than the U.S. figure of 3.6 percent, 9 states and the District of Columbia had higher rates, and 29 states had rates that were not appreciably different from that of the nation.



Economic Growth Region (EGR) 6

Blackford, Delaware, Fayette, Henry, Jay, Randolph, Rush, Union, and Wayne Counties

Unemployment Rates by State (seasonally adjusted): May 2019

U.S. - 3.6%

Illinois - 4.4%

Indiana - 3.6%

Kentucky - 4%

Michigan - 4.2%

Ohio - 4.1%

Source: U.S. Department of Labor, Bureau of Labor Statistics

Unemployment Rank by County (of 92 counties): May 2019

#3 - Fayette (3.9%)

#8 - Delaware (3.6%)

#22 - Randolph (3.2%)

#24 - Wayne (3.2%)

#25 - Blackford (3.1%)

#33 - Henry (3%)

#58 - Jay (2.7%)

#61 - Union (2.7%)

#81 - Rush (2.4%)

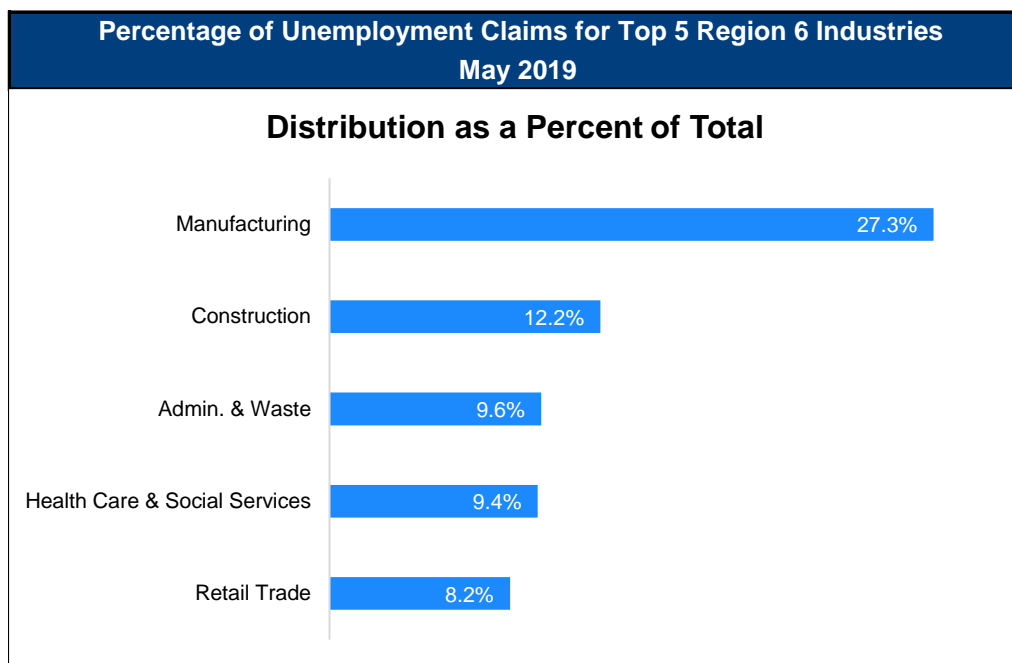
Source: Indiana Department of Workforce Development, Research and Development, Local Area Unemployment Statistics

May 2019 Labor Force Estimates (not seasonally adjusted)						
Area	Labor Force	Employed	Unemployed	May-19	Apr-19	May-18
U.S.	162,655,000	157,152,000	5,503,000	3.4%	3.3%	3.6%
IN	3,368,523	3,269,725	98,798	2.9%	3.1%	3.2%
EGR 6	153,945	148,977	4,968	3.2%	3.3%	3.5%
Muncie MSA	52,105	50,242	1,863	3.6%	3.4%	3.7%
Blackford Co.	5,261	5,098	163	3.1%	3.5%	3.5%
Delaware Co.	52,105	50,242	1,863	3.6%	3.4%	3.7%
Fayette Co.	9,001	8,651	350	3.9%	4.0%	4.3%
Henry Co.	22,294	21,636	658	3.0%	3.1%	3.3%
Jay Co.	9,663	9,404	259	2.7%	2.8%	3.1%
Randolph Co.	11,494	11,131	363	3.2%	3.3%	3.4%
Rush Co.	9,134	8,917	217	2.4%	2.5%	2.6%
Union Co.	3,718	3,616	102	2.7%	2.9%	2.9%
Wayne Co.	31,275	30,282	993	3.2%	3.2%	3.4%
Connersville	4,569	4,373	196	4.3%	4.4%	4.4%
Muncie	30,014	28,858	1,156	3.9%	3.6%	4.1%
New Castle	7,669	7,431	238	3.1%	3.3%	3.4%
Richmond	15,232	14,713	519	3.4%	3.3%	3.6%

Source: Indiana Department of Workforce Development, Research & Analysis, Local Area Unemployment Statistics | Unemployment Statistics Released: 06/19 | Notes: The data displayed are presented as estimates only. The most recent month's data are always preliminary and are revised when the next month's data are released.

Consumer Price Index (CPI-U Change), Unadjusted Percent Change to May 2019 from				
CPI Item	May-18	Apr-19	May-18	Apr-19
	U.S. City		Midwest Region*	
All Items	1.8%	0.2%	1.3%	0.3%
Food & Beverages	2.0%	0.2%	1.5%	0.5%
Housing	2.8%	0.3%	2.7%	0.3%
Apparel	-3.1%	-0.9%	-3.1%	-0.8%
Transportation	0.6%	0.6%	0.2%	0.1%
Medical Care	2.1%	0.3%	1.5%	0.9%
Recreation	1.2%	-0.5%	-0.9%	0.2%
Education & Communication	0.7%	0.0%	-0.3%	-0.2%
Other Goods & Services	1.6%	0.3%	2.3%	0.5%

*Midwest region = Midwest Urban Average. Midwest Region includes Illinois, Indiana, Iowa, Kansas, Michigan, Minnesota, Missouri, Nebraska, North Dakota, Ohio, South Dakota and Wisconsin | Source: U.S. Bureau of Labor Statistics



Source: Indiana Department of Workforce Development, Research and Analysis

WARN Notices

WARN Notices for Region 6 for May 2019				
Company	City	County	# of workers affected	Notice Date
Fayette Regional Health	Connersville	Fayette	437	5/3/2019

Source: Indiana Department of Workforce Development, WARN Notices | For information on WARN Act requirements, you may go to the U.S. Department of Labor Employment Training Administration Fact Sheet:

<https://www.doleta.gov/programs/factsheet/warn.htm>

Unemployment Claims: May 2019

Region 6

Initial Claims

05/04/19 - 49(D)

05/11/19 - 82(D)

05/18/19 - 61(D)

05/25/19 - 75(D)

Continued Claims

05/04/19 - 624

05/11/19 - 610

05/18/19 - 626

05/25/19 - 637

Total Claims

05/04/19 - 673

05/11/19 - 692

05/18/19 - 687

05/25/19 - 712

State of Indiana

Initial Claims

05/04/19 - 1,821

05/11/19 - 1,805

05/18/19 - 1,747

05/25/19 - 1,669

Continued Claims

05/04/19 - 11,559

05/11/19 - 11,380

05/18/19 - 11,273

05/25/19 - 11,323

Total Claims

05/04/19 - 13,380

05/11/19 - 13,185

05/18/19 - 13,020

05/25/19 - 12,992

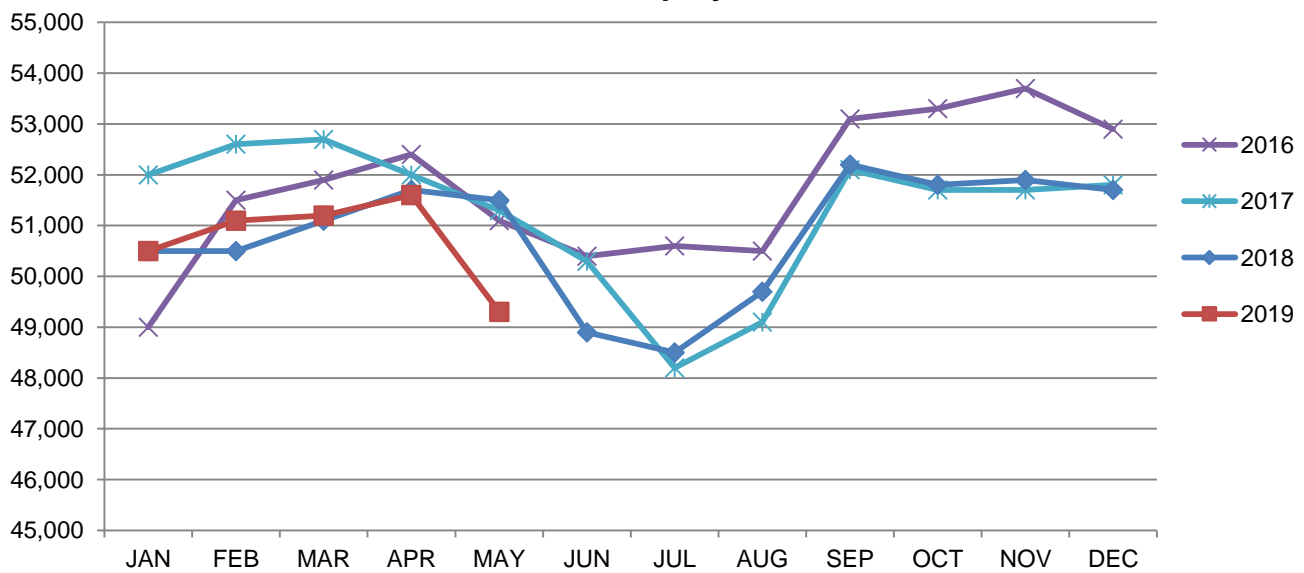
(D) indicates item is affected by non-disclosure issues relating to industry or ownership status |

Source: Indiana Department of Workforce Development, Research and Development

Muncie MSA							
Wage and Salaried Employment	May 2019			# Change	% Change	# Change	% Change
Industry	May-19	Apr-19	May-18	Apr-19 to May-19		May-18 to May-19	
Total Nonfarm	49,300	51,600	51,500	-2,300	-4.5%	-2,200	-4.3%
Total Private	38,600	38,600	38,500	0	0.0%	100	0.3%
Goods Producing	5,900	5,800	5,900	100	1.7%	0	0.0%
Service-Providing	43,400	45,800	45,600	-2,400	-5.2%	-2,200	-4.8%
Private Service Providing	32,700	32,800	32,600	-100	-0.3%	100	0.3%
Mining, Logging and Construction	1,700	1,600	1,700	100	6.3%	0	0.0%
Manufacturing	4,200	4,200	4,200	0	0.0%	0	0.0%
Trade, Transportation, and Utilities	8,500	8,500	8,800	0	0.0%	-300	-3.4%
Wholesale Trade	1,000	1,000	1,100	0	0.0%	-100	-9.1%
Retail Trade	6,200	6,200	6,400	0	0.0%	-200	-3.1%
Transportation, Warehousing, and Utilities	1,300	1,300	1,300	0	0.0%	0	0.0%
Information	300	300	300	0	0.0%	0	0.0%
Financial Activities	2,200	2,200	2,300	0	0.0%	-100	-4.4%
Education and Health Services	9,400	9,400	9,100	0	0.0%	300	3.3%
Leisure and Hospitality	5,600	5,600	5,300	0	0.0%	300	5.7%
Other Services	1,900	1,900	1,800	0	0.0%	100	5.6%
Government	10,700	13,000	13,000	-2,300	-17.7%	-2,300	-17.7%
State Government	6,700	8,900	9,000	-2,200	-24.7%	-2,300	-25.6%
State Government Educational Services	6,500	8,700	8,800	-2,200	-25.3%	-2,300	-26.1%
State Government Excluding Education	200	200	200	0	0.0%	0	0.0%
Local Government	3,700	3,700	3,700	0	0.0%	0	0.0%
Local Government Educational Services	2,200	2,200	2,200	0	0.0%	0	0.0%
Local Government excluding Educational Services	1,500	1,500	1,500	0	0.0%	0	0.0%

Source: Indiana Dept of Workforce Development, Research and Analysis, Current Employment Statistics

Muncie MSA Employment Trends



Source: Indiana Department of Workforce Development, Research & Analysis, Current Employment Statistics | Note: Historical data for the most recent 4 years (both seasonally adjusted and not seasonally adjusted) are revised near the beginning of each calendar year, prior to the release of January estimates for statewide data.

Frequently Listed Jobs	
Top 20 job listings in Region 6 in the past month	
Rank	Occupations
1	Customer Service Representatives
2	Helpers--Production Workers
3	Amusement and Recreation Attendants
4	Social and Human Service Assistants
5	Production Workers, All Other
6	Retail Salespersons
7	Heavy and Tractor-Trailer Truck Drivers
8	Light Truck or Delivery Services Drivers
9	Security Guards
10	Therapists, All Other
11	Machinists
12	Computer User Support Specialists
13	Registered Nurses
14	First-Line Supervisors of Transportation and Material-Moving Machine and Vehicle Operators
15	Licensed Practical and Licensed Vocational Nurses
16	Tellers
17	Biological Technicians
18	Community and Social Service Specialists, All Other
19	Financial Specialists, All Other
20	Landscaping and Groundskeeping Workers

Source: Indiana Workforce Development, Indiana Career Connect

Applicant Pool	
Top 20 occupations desired by applicants on their resumes in the past 12 months	
Occupations	# of applicants
Production Workers, All Other	467
Assemblers and Fabricators, All Other	334
Helpers--Production Workers	223
Customer Service Representatives	185
Cashiers	141
Laborers and Freight, Stock, and Material Movers, Hand	136
Office Clerks, General	109
Stock Clerks and Order Fillers	90
Team Assemblers	85
Nursing Assistants	83
Construction Laborers	77
Office and Administrative Support Workers, All Other	74
Combined Food Preparation and Serving Workers, Including Fast Food	71
Retail Salespersons	70
Janitors and Cleaners, Except Maids and Housekeeping Cleaners	68
Managers, All Other	67
Inspectors, Testers, Sorters, Samplers, and Weighers	64
Receptionists and Information Clerks	60
Shipping, Receiving, and Traffic Clerks	60
Packers and Packagers, Hand	57

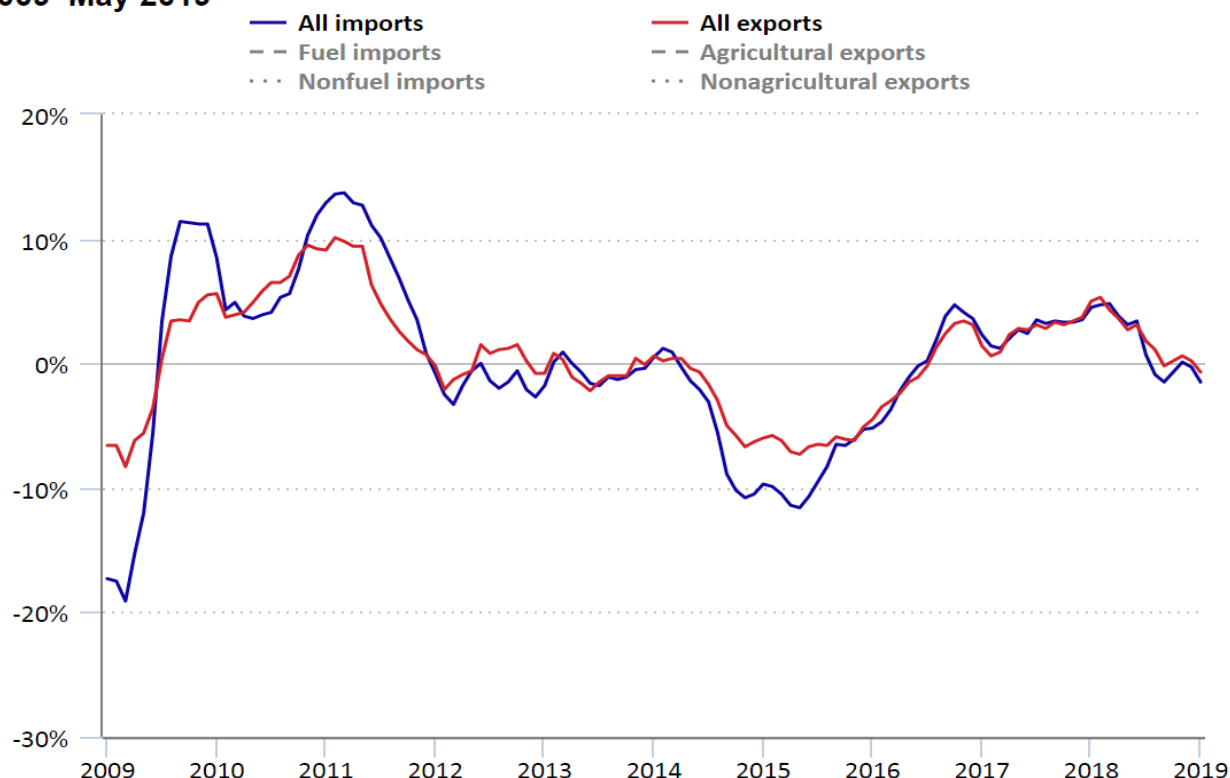
Source: Indiana Workforce Development, Indiana Career Connect

U.S. Import and Export Prices Decrease Over the Year Ending May 2019

(Excerpted from the Bureau of Labor Statistics, U.S. Department of Labor, *The Economics Daily*)

From May 2018 to May 2019, U.S. import prices decreased 1.5 percent and export prices decreased 0.7 percent. The drop in import prices matched the 12-month decline in January 2019, and the decline in export prices was the largest since October 2016, when they fell 1.1 percent.

12-month percent change in U.S. Import and Export Price Indexes, May 2009–May 2019



Import fuel prices decreased 1.1 percent over the year ending May 2019, driven by a 1.9-percent drop in petroleum prices that more than offset a 2.5-percent increase in natural gas prices. Prices for nonfuel imports declined 1.4 percent from May 2018 to May 2019.

Agricultural export prices fell 5.3 percent over the year ending May 2019, the largest 12-month drop since the index declined 9.1 percent in April 2016. A 20.6-percent decrease in soybeans prices led the overall decline in agricultural prices. The drop in soybeans prices more than offset higher vegetable prices over the year.

Prices for nonagricultural exports declined 0.2 percent over the year ending May 2019, driven by lower prices for nonagricultural industrial supplies and materials. In contrast, prices for each of the major finished goods categories rose over the year.

These data are from the International Price program. Import and export prices are subject to revision. To learn more, see “U.S. Import and Export Prices — May 2019.” See more charts on import and export price trends in Charts related to the latest “U.S. Import and Export Price Indexes” news release.

County Unemployment Rates May 2019



INDIANA
DEPARTMENT OF
WORKFORCE
DEVELOPMENT

Questions?

Please contact the
Regional Labor Analyst
listed below:

Kent Sellers

[Indiana Department of
Workforce Development](https://www.in.gov/workforce)

200 E. Main St., SE 910

Fort Wayne, IN 46802

260-469-4313

WSellers@dwd.in.gov