



February 2025 Labor Market Review

Reported by: Alex Corn, MPA

Regional Workforce Analyst

[Email Alex](#)

dcorn@dwd.in.gov

LABOR MARKET REVIEW

Economic Growth Region 5

Statistical Data Report for February 2025, Released April 2025

State Employment and Unemployment

STATE EMPLOYMENT AND UNEMPLOYMENT -- The unemployment rate of the State of Indiana in February was recorded to be 4.3%, according to the Indiana Department of Workforce Development. By comparison, the national unemployment rate reported for February was 4.1%. In addition, Indiana's labor force participation rate is 63.8% compared to the national rate of 62.4%. This rate is the percentage of Hoosiers 16 and older that are either working or actively looking for work. February 2025 total private employment is 2,825,200 a decrease of 3,300 from the previous month.

Source: Indiana Department of Workforce Development

February 2025 Labor Force Estimates (not seasonally adjusted)						
Area	Labor Force	Employed	Unemployed	Feb-25	Jan-25	Feb-24
U.S.	170,116,000	162,544,000	7,572,000	4.5%	4.4%	4.2%
IN	3,473,038	3,316,769	156,269	4.5%	4.5%	4.4%
EGR 5	1,128,223	1,082,670	45,553	4.0%	4.0%	4.0%
Indpls-Carmel-Grnwd MSA	1,144,119	1,097,852	46,267	4.0%	4.0%	4.0%
Boone Co.	41,732	40,321	1,411	3.4%	3.5%	3.5%
Hamilton Co.	207,837	200,766	7,071	3.4%	3.3%	3.4%
Hancock Co.	47,405	45,642	1,763	3.7%	3.7%	3.7%
Hendricks Co.	102,889	99,281	3,608	3.5%	3.5%	3.5%
Johnson Co.	88,659	85,359	3,300	3.7%	3.7%	3.7%
Madison Co.	64,571	61,546	3,025	4.7%	4.7%	4.7%
Marion Co.	514,217	491,428	22,789	4.4%	4.3%	4.4%
Morgan Co.	37,554	35,909	1,645	4.4%	4.4%	4.3%
Shelby Co.	23,359	22,418	941	4.0%	4.1%	4.0%
Anderson	25,266	23,923	1,343	5.3%	5.3%	5.1%
Carmel	56,825	54,937	1,888	3.3%	3.3%	3.3%
Fishers	58,789	56,896	1,893	3.2%	3.2%	3.4%
Greenfield	14,181	13,620	561	4.0%	4.0%	3.8%
Greenwood	35,573	34,264	1,309	3.7%	3.7%	3.7%
Indianapolis	470,514	449,533	20,981	4.5%	4.4%	4.4%
Lawrence	27,936	26,794	1,142	4.1%	4.0%	4.0%
Lebanon	9,700	9,347	353	3.6%	4.0%	3.9%
Noblesville	41,101	39,649	1,452	3.0%	3.5%	3.4%
Plainfield	18,859	18,115	744	3.9%	3.9%	4.0%
Shelbyville	10,500	10,064	436	4.2%	4.1%	4.1%
Westfield	32,613	31,536	1,077	3.3%	3.2%	3.3%
Zionsville	17,013	16,476	537	3.2%	3.1%	3.3%

Source: Indiana Department of Workforce Development, Research & Analysis, Local Area Unemployment Statistics | Unemployment Statistics Released:03/25

Notes: The data displayed are presented as estimates only. The most recent month's data are always preliminary and are revised when the next month's data are released.



Economic Growth Region (EGR) 5

Boone, Hamilton, Hancock, Hendricks, Johnson, Madison, Marion, Morgan, and Shelby counties

Unemployment Rates by State (seasonally adjusted): February 2025

U.S. - 4.1%

Illinois - 4.8%

Indiana - 4.3%

Kentucky - 5.3%

Michigan - 5.4%

Ohio - 4.7%

Source: U.S. Department of Labor, Bureau of Labor Statistics

Unemployment Rank by County (of 92 counties): February 2025

#29 - Madison (4.7%)

#47 - Marion (4.4%)

#48 - Morgan (4.4%)

#70 - Shelby (4%)

#81 - Hancock (3.7%)

#83 - Johnson (3.7%)

#88 - Hendricks (3.5%)

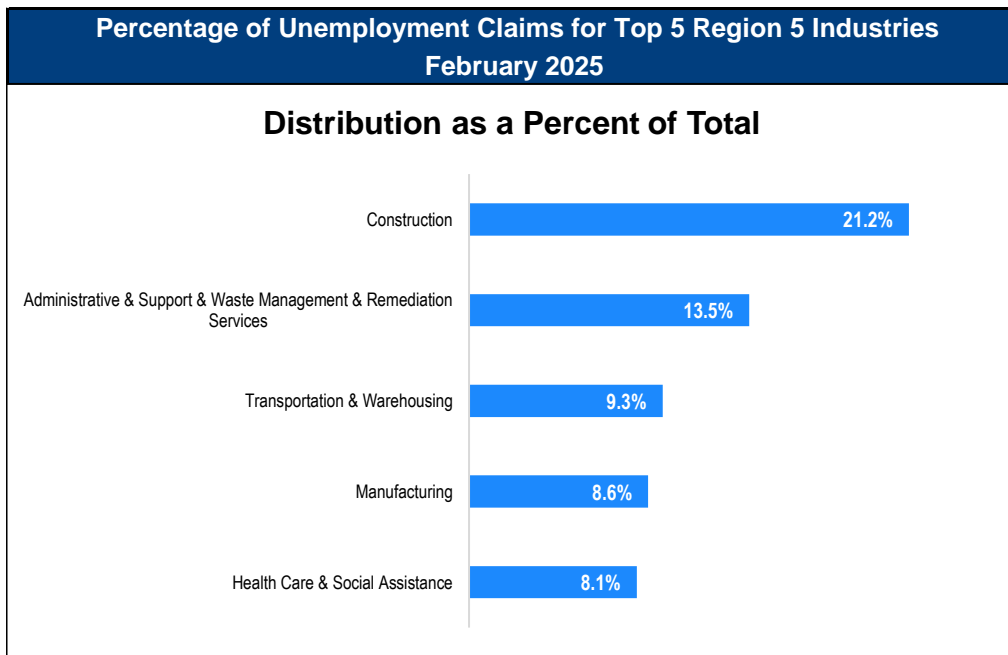
#89 - Boone (3.4%)

#91 - Hamilton (3.4%)

Source: Indiana Department of Workforce Development, Research and Development, Local Area Unemployment Statistics

Consumer Price Index (CPI-U Change), Unadjusted Percent Change to February 2025 from				
CPI Item	Feb-25	Jan-25	Feb-25	Jan-25
	U.S. City		Midwest Region*	
All Items	2.8%	0.4%	3.1%	0.3%
Food & Beverages	2.6%	0.2%	2.0%	0.0%
Housing	3.9%	0.4%	5.0%	0.6%
Apparel	0.6%	3.4%	1.6%	3.4%
Transportation	1.7%	0.2%	1.2%	-0.4%
Medical Care	2.9%	0.2%	2.9%	-0.5%
Recreation	1.8%	0.5%	1.2%	0.5%
Education & Communication	0.3%	0.3%	0.2%	0.2%
Other Goods & Services	3.3%	0.9%	3.9%	0.8%

*Midwest region = Midwest Urban Average. Midwest Region includes Illinois, Indiana, Iowa, Kansas, Michigan, Minnesota, Missouri, Nebraska, North Dakota, Ohio, South Dakota and Wisconsin | Source: U.S. Bureau of Labor Statistics



Source: Indiana Department of Workforce Development, Research and Analysis

WARN Notices

WARN Notices for Region 5 for February 2025				
Company	City	County	# of workers affected	Notice Date
ABM	Indianapolis	Marion	77	2/28/2025
Phoenix Financial Services	Fishers	Hamilton	94	1/24/2025
Nachi Technology Inc (NTI)	Greenwood	Johnson	72	3/19/2025

Source: Indiana Department of Workforce Development, WARN Notices | For information on WARN Act requirements, you may go to the U.S. Department of Labor Employment Training Administration Fact Sheet:

<https://www.doleta.gov/programs/factsht/warn.htm>

Unemployment Claims: February 2025

Region 5

Initial Claims

02/01/25 - 1,029

02/08/25 - 885

02/15/25 - 899

02/22/25 - 860

Continued Claims

02/01/25 - 3,477

02/08/25 - 3,504

02/15/25 - 3,577

02/22/25 - 3,783

Total Claims

02/01/25 - 4,506

02/08/25 - 4,389

02/15/25 - 4,476

02/22/25 - 4,643

State of Indiana

Initial Claims

02/01/25 - 3,489

02/08/25 - 3,107

02/15/25 - 3,087

02/22/25 - 3,062

Continued Claims

02/01/25 - 28,861

02/08/25 - 30,846

02/15/25 - 28,908

02/22/25 - 26,542

Total Claims

02/01/25 - 32,350

02/08/25 - 33,953

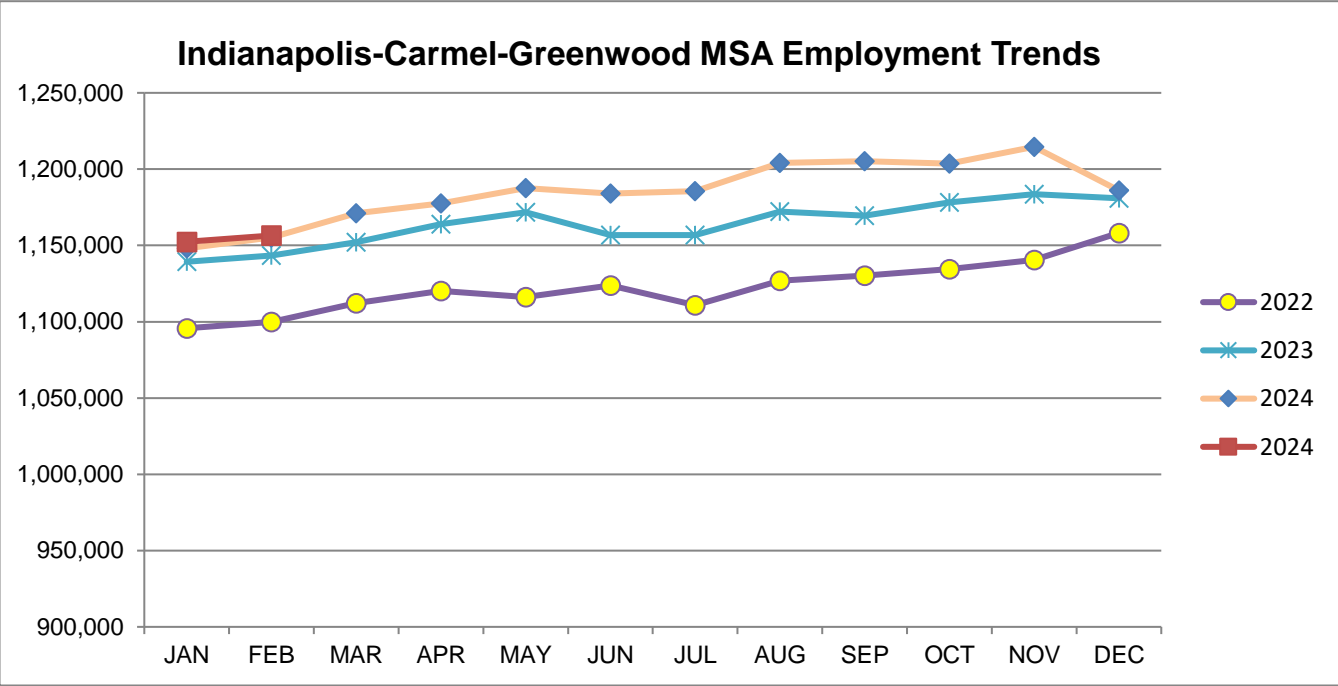
02/15/25 - 31,995

02/22/25 - 29,604

(D) indicates item is affected by non-disclosure issues relating to industry or ownership status *Numbers subject to weekly revision [Source:](#) Indiana Department of Workforce Development

Indianapolis-Carmel-Greenwood MSA							
Wage and Salaried Employment	February 2025			# Change	% Change	# Change	% Change
Industry	Feb-25	Jan-25	Feb-24	Jan-25 to Feb-25		Feb-24 to Feb-25	
Total Nonfarm	1,156,500	1,152,400	1,155,200	4,100	0.4%	1,300	0.1%
Total Private	1,010,500	1,008,100	1,011,400	2,400	0.2%	-900	-0.1%
Goods Producing	159,700	158,100	158,500	1,600	1.0%	1,200	0.8%
Service-Providing	996,800	994,300	996,700	2,500	0.3%	100	0.0%
Private Service Providing	850,800	850,000	852,900	800	0.1%	-2,100	-0.3%
Mining and Logging	600	600	700	0	0.0%	-100	-14.3%
Mining, Logging and Construction	63,700	62,800	62,900	900	1.4%	800	1.3%
Construction	63,100	62,200	62,200	900	1.5%	900	1.5%
Specialty Trade Contractors	39,700	39,200	38,700	500	1.3%	1,000	2.6%
Manufacturing	96,000	95,300	95,600	700	0.7%	400	0.4%
Durable Goods	51,000	50,600	51,300	400	0.8%	-300	-0.6%
Transportation Equipment Manufacturing	14,200	14,200	14,300	0	0.0%	-100	-0.7%
Motor Vehicle Parts Manufacturing	9,500	9,500	9,400	0	0.0%	100	1.1%
Non-Durable Goods	45,000	44,700	44,300	300	0.7%	700	1.6%
Chemical Manufacturing	20,100	19,900	19,200	200	1.0%	900	4.7%
Trade, Transportation, and Utilities	245,700	247,900	243,900	-2,200	-0.9%	1,800	0.7%
Wholesale Trade	55,200	55,900	54,800	-700	-1.3%	400	0.7%
Merchant Wholesalers, Durable Goods	36,500	36,400	35,500	100	0.3%	1,000	2.8%
Retail Trade	98,600	99,300	98,500	-700	-0.7%	100	0.1%
General Merchandise Stores	23,900	24,100	24,000	-200	-0.8%	-100	-0.4%
Department Stores	4,200	4,200	4,200	0	0.0%	0	0.0%
Other General Merchandise Stores	19,700	19,900	19,800	-200	-1.0%	-100	-0.5%
Transportation, Warehousing, and Utilities	91,900	92,700	90,600	-800	-0.9%	1,300	1.4%
Transportation and Warehousing	88,900	89,600	87,300	-700	-0.8%	1,600	1.8%
Information	11,200	11,100	12,000	100	0.9%	-800	-6.7%
Telecommunications	2,400	2,400	2,700	0	0.0%	-300	-11.1%
Financial Activities	73,800	73,100	73,700	700	1.0%	100	0.1%
Finance and Insurance	57,400	57,300	57,400	100	0.2%	0	0.0%
Insurance Carriers and Related Activities	36,200	36,400	36,000	-200	-0.6%	200	0.6%
Insurance Carriers	19,100	19,100	19,300	0	0.0%	-200	-1.0%
Professional and Business Services	179,900	179,900	183,400	0	0.0%	-3,500	-1.9%
Professional, Scientific, and Technical Services	81,200	82,000	82,800	-800	-1.0%	-1,600	-1.9%
Management of Companies and Enterprises	15,200	15,200	14,900	0	0.0%	300	2.0%
Administrative and Support and Waste Management and Remediation Services	83,500	82,700	85,700	800	1.0%	-2,200	-2.6%
Administrative and Support Services	79,100	78,200	81,500	900	1.2%	-2,400	-2.9%
Employment Services	40,400	39,800	41,600	600	1.5%	-1,200	-2.9%
Education and Health Services	185,700	185,600	185,600	100	0.1%	100	0.1%
Educational Services	21,700	20,800	22,300	900	4.3%	-600	-2.7%
Health Care and Social Assistance	164,000	164,800	163,300	-800	-0.5%	700	0.4%
Ambulatory Health Care Services	73,000	73,800	73,500	-800	-1.1%	-500	-0.7%
Hospitals	43,800	44,000	43,400	-200	-0.5%	400	0.9%
Leisure and Hospitality	105,800	104,200	105,800	1,600	1.5%	0	0.0%
Accommodation and Food Services	88,000	86,900	89,400	1,100	1.3%	-1,400	-1.6%
Food Services and Drinking Places	80,500	79,500	81,900	1,000	1.3%	-1,400	-1.7%
Restaurants and Other Eating Places	71,600	71,100	73,600	500	0.7%	-2,000	-2.7%
Full-service restaurants	35,400	35,200	36,000	200	0.6%	-600	-1.7%
Limited-Service Restaurants and Other Eating Places	36,200	35,900	37,600	300	0.8%	-1,400	-3.7%
Other Services	48,700	48,200	48,500	500	1.0%	200	0.4%
Total Government	146,000	144,300	143,800	1,700	1.2%	2,200	1.5%
Federal Government	20,400	20,100	19,100	300	1.5%	1,300	6.8%
State Government	35,700	35,100	36,700	600	1.7%	-1,000	-2.7%
Local Government	89,900	89,100	88,000	800	0.9%	1,900	2.2%
Local Government Educational Services	45,400	44,600	44,700	800	1.8%	700	1.6%

Source: Indiana Dept of Workforce Development, Research and Analysis, Current Employment Statistics



Source: Indiana Department of Workforce Development, Research & Analysis, Current Employment Statistics | Note: Historical data for the most recent 4 years (both seasonally adjusted and not seasonally adjusted) are revised near the beginning of each calendar year, prior to the release of January estimates for statewide data.

Frequently Listed Jobs	
Top 20 job listings by number of openings in Region 5 in the past month	
Rank	Occupations
1	Landscaping and Groundskeeping Workers
2	First-Line Supervisors of Production and Operating Workers
3	Software Developers
4	Farmworkers and Laborers, Crop, Nursery, and Greenhouse
5	Laborers and Freight, Stock, and Material Movers, Hand
6	Office Clerks, General
7	Business Operations Specialists, All Other
8	Maintenance and Repair Workers, General
9	Tree Trimmers and Pruners
10	Computer Systems Analysts
11	First-Line Supervisors of Helpers, Laborers, and Material Movers, Hand
12	First-Line Supervisors of Office and Administrative Support Workers
13	Mechanical Engineers
14	Stockers and Order Fillers
15	Tellers
16	Agricultural Equipment Operators
17	Customer Service Representatives
18	Heavy and Tractor-Trailer Truck Drivers
19	Inspectors, Testers, Sorters, Samplers, and Weighers
20	Managers, All Other

Source: Indiana Workforce Development, Indiana Career Connect. * Due to an upgrade in the reporting system, there is a notable change in Job Postings recorded. The tool used to measure Job Postings was upgraded to prevent malicious or false postings. While customers adjust to the enhancements a drop in the record is to be expected.

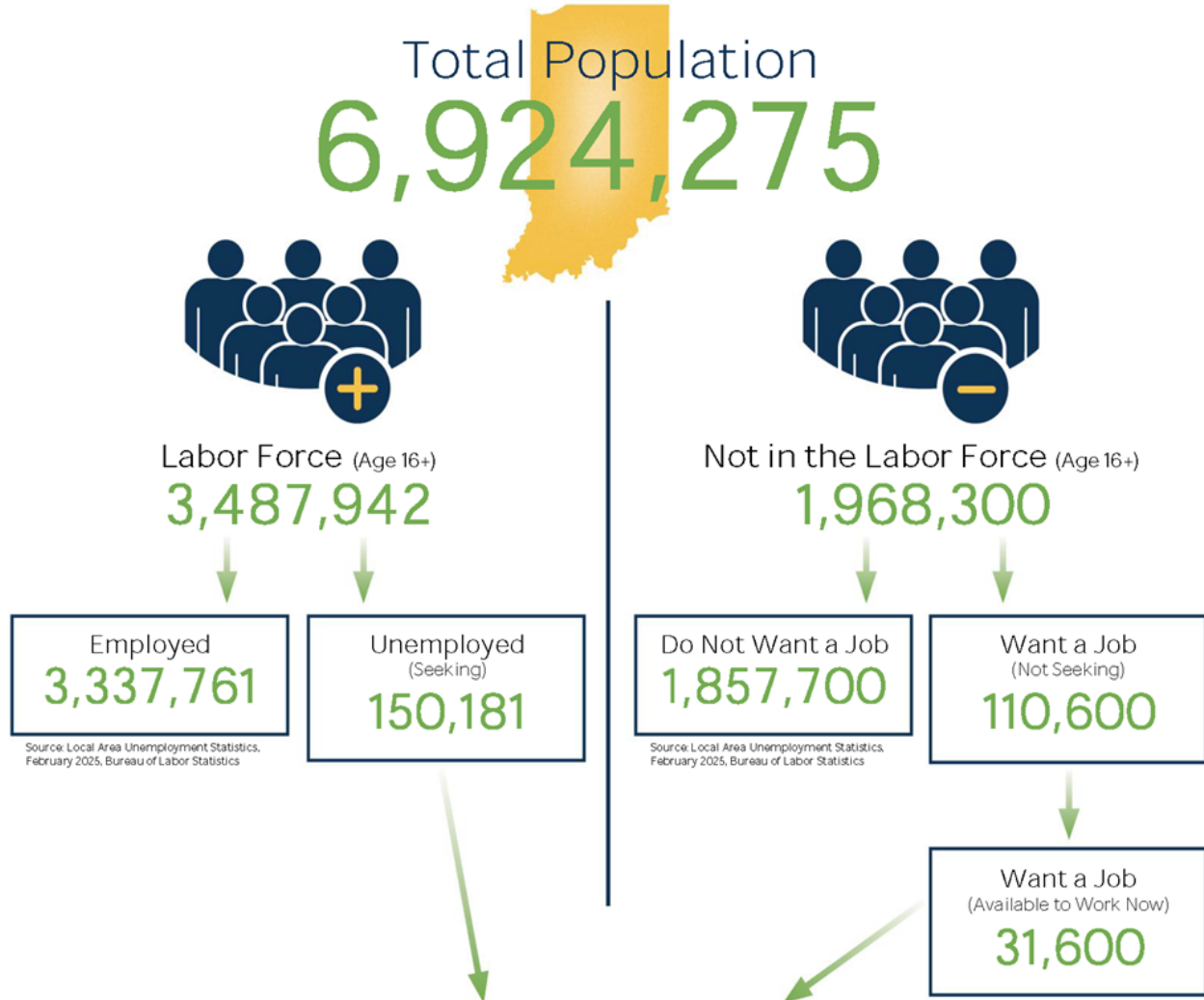
Applicant Pool	
Top 20 occupations desired by applicants on their resumes in the past 12 months	
Occupations	# of applicants
Customer Service Representatives	2,445
Production Workers, All Other	1,467
Laborers and Freight, Stock, and Material Movers, Hand	1,344
Assemblers and Fabricators, All Other	1,063
Cashiers	1,041
Helpers--Production Workers	828
Heavy and Tractor-Trailer Truck Drivers	800
Office Clerks, General	742
Managers, All Other	700
Packers and Packagers, Hand	610
Industrial Truck and Tractor Operators	608
Office and Administrative Support Workers, All Other	584
Executive Secretaries and Executive Administrative Assistants	515
Retail Salespersons	484
Shipping, Receiving, and Traffic Clerks	448
Data Entry Keyers	443
General and Operations Managers	432
Receptionists and Information Clerks	431
Sales Managers	373
Construction Laborers	358

Source: Indiana Workforce Development, Indiana Career Connect

BREAKDOWN

February Indiana Labor Force

Released March 28, 2025



Potential Workers

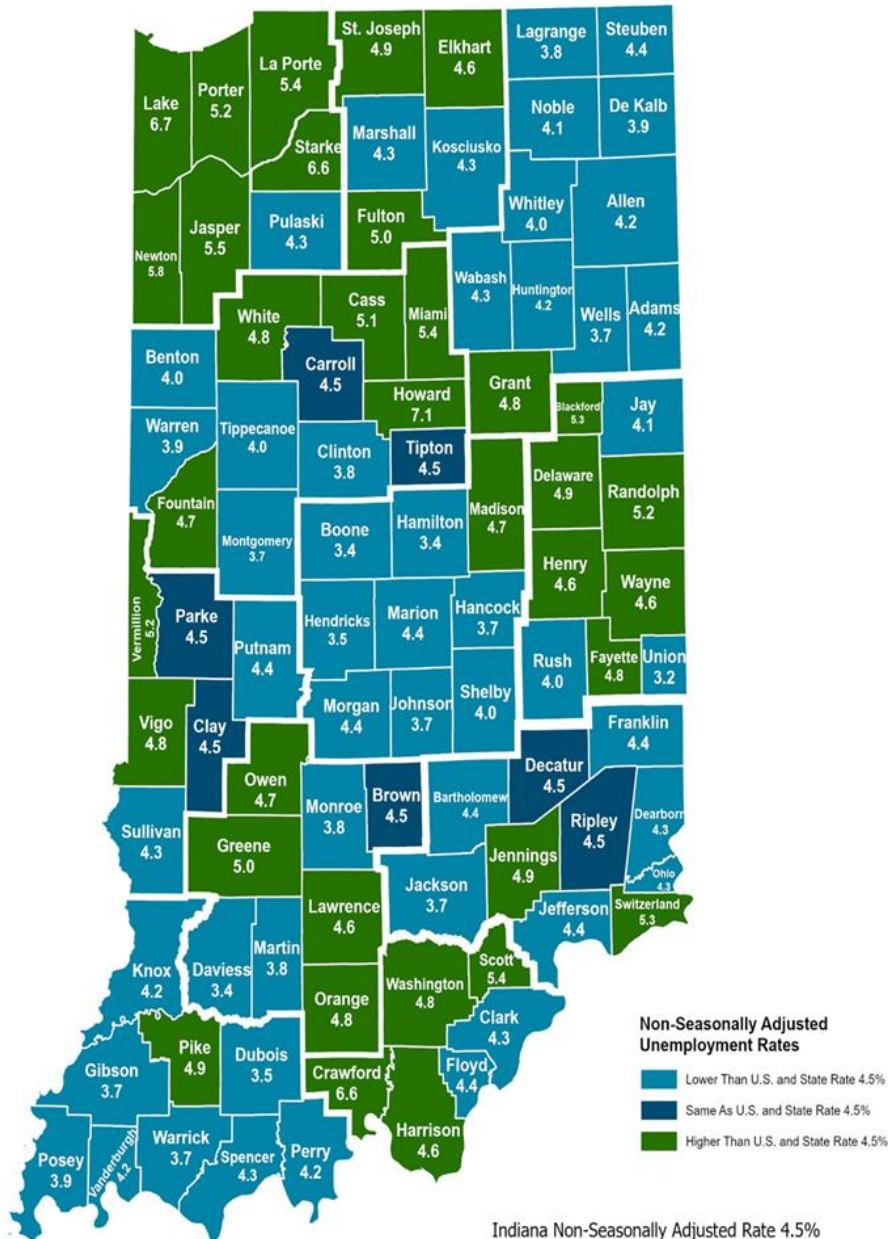
(Unemployed and Seeking a Job + Not in the Labor Force but Want a Job/Available to Work Now)

181,781

More about the US Bureau of Labor Statistics data sources used within:
Local Area Unemployment Statistics (LAUS): Captures Indiana's labor force, which includes those currently employed and those who are unemployed and actively seeking work.
Current Population Survey (CPS): Captures individuals not participating in Indiana's Labor Force. This set includes non-participants that do not want a job (i.e. retirees and students) and those that want a job, but are not actively seeking work.
U.S. Census Bureau, Indiana Population 2024.

Resource: Notes on Using Current Population Survey (CPS) Subnational Data and Differences Between CPS and LAUS Estimates

County Unemployment Rates February 2025



**Non-Seasonally Adjusted
Unemployment Rates**

- Lower Than U.S. and State Rate 4.5%
- Same As U.S. and State Rate 4.5%
- Higher Than U.S. and State Rate 4.5%

Indiana Non-Seasonally Adjusted Rate 4.5%
Indiana Seasonally Adjusted Rate 4.3%
Source: DWD, Local Area Unemployment Statistics

Questions?

Please contact the DWD
Research and Analysis
Regional Labor Analyst
listed below:

Alex Corn, MPA
Senior Regional Labor
Analyst

Research and Analysis

[Indiana Department of
Workforce Development](https://www.in.gov/dwd/)

dcorn@dwd.in.gov