



# HOOSIERS BY THE NUMBERS

Your premier source for labor market information for Indiana.



LABOR MARKET REVIEW



**April 2024  
Labor Market Review**

**Reported by: Mike Petro**

Regional Workforce Analyst

[Email Mike](mailto:gpetro@dwd.in.gov)

[gpetro@dwd.in.gov](mailto:gpetro@dwd.in.gov)



## LABOR MARKET REVIEW

# Economic Growth Region 5

Statistical Data Report for April 2024, Released June 2024

## State Employment and Unemployment

### STATE EMPLOYMENT AND UNEMPLOYMENT -- APRIL 2024

Unemployment rates were lower in April in 5 states, higher in 2 states, and stable in 43 states and the District of Columbia, the U.S. Bureau of Labor Statistics reported. Thirty states had jobless rate increases from a year earlier, 1 state had a decrease, and 19 states and the District had little change. The national unemployment rate changed little at 3.9 percent but was 0.5 percentage point higher than in April 2023. Nonfarm payroll employment increased in 6 states and was essentially unchanged in 44 states and the District of Columbia in April 2024. Over the year, nonfarm payroll employment increased in 31 states and was essentially unchanged in 19 states and the District.

Source: Bureau of Labor Statistics

### April 2024 Labor Force Estimates (not seasonally adjusted)

Area	Labor Force	Employed	Unemployed	Apr-24	Mar-24	Apr-23
U.S.	167,484,000	161,590,000	5,894,000	3.5%	3.9%	3.1%
IN	3,383,458	3,267,750	115,708	3.4%	4.1%	2.7%
EGR 5	1,103,214	1,068,991	34,223	3.1%	3.7%	2.5%
Indpls-Carmel MSA	1,128,097	1,093,095	35,002	3.1%	3.7%	2.5%
Boone Co.	38,638	37,618	1,020	2.6%	3.2%	2.0%
Hamilton Co.	198,499	193,281	5,218	2.6%	3.1%	2.1%
Hancock Co.	43,255	42,018	1,237	2.9%	3.4%	2.2%
Hendricks Co.	96,762	94,075	2,687	2.8%	3.3%	2.2%
Johnson Co.	88,210	85,737	2,473	2.8%	3.4%	2.1%
Madison Co.	60,883	58,774	2,109	3.5%	4.3%	3.0%
Marion Co.	515,253	497,605	17,648	3.4%	4.0%	2.7%
Morgan Co.	37,730	36,588	1,142	3.0%	3.8%	2.5%
Shelby Co.	23,984	23,295	689	2.9%	3.4%	2.2%
Anderson	23,890	22,973	917	3.8%	4.6%	3.2%
Carmel	57,525	56,071	1,454	2.5%	3.0%	2.0%
Fishers	56,509	55,009	1,500	2.7%	3.1%	2.1%
Greenfield	12,005	11,634	371	3.1%	3.7%	2.4%
Greenwood	32,892	31,888	1,004	3.1%	3.5%	2.3%
Indianapolis	472,115	455,818	16,297	3.5%	4.0%	2.8%
Lawrence	28,132	27,253	879	3.1%	3.7%	2.6%
Lebanon	9,045	8,788	257	2.8%	3.4%	2.1%
Noblesville	38,423	37,427	996	3.0%	3.1%	2.1%
Plainfield	18,518	17,934	584	3.2%	3.7%	2.4%
Shelbyville	9,674	9,388	286	3.0%	3.6%	2.4%
Westfield	26,676	25,973	703	2.6%	3.2%	2.1%
Zionsville	15,988	15,572	416	2.6%	3.2%	1.8%

Source: Indiana Department of Workforce Development, Research & Analysis, Local Area Unemployment Statistics | Unemployment Statistics Released:05/24

Notes: The data displayed are presented as estimates only. The most recent month's data are always preliminary and are revised when the next month's data are released.



## Economic Growth Region (EGR) 5

Boone, Hamilton, Hancock, Hendricks, Johnson, Madison, Marion, Morgan, and Shelby counties

## Unemployment Rates by State (seasonally adjusted): April 2024

- U.S. - 3.9%
- Illinois - 4.8%
- Indiana - 3.6%
- Kentucky - 4.6%
- Michigan - 3.9%
- Ohio - 4%

Source: U.S. Department of Labor, Bureau of Labor Statistics

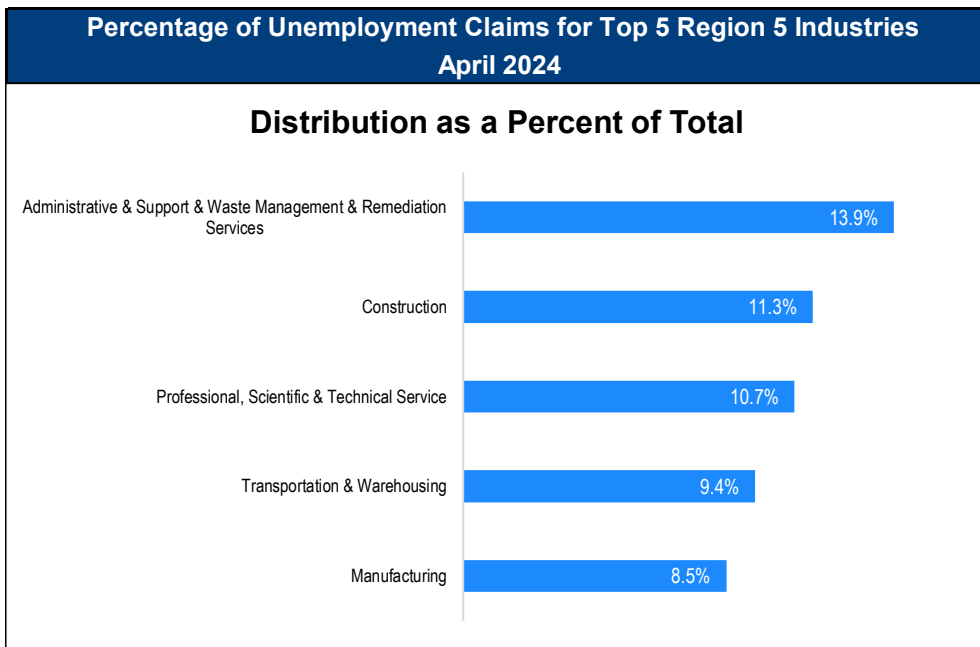
## Unemployment Rank by County (of 92 counties): April 2024

- #32 - Madison (3.5%)
- #37 - Marion (3.4%)
- #60 - Morgan (3%)
- #67 - Hancock (2.9%)
- #71 - Shelby (2.9%)
- #75 - Hendricks (2.8%)
- #77 - Johnson (2.8%)
- #86 - Boone (2.6%)
- #88 - Hamilton (2.6%)

Source: Indiana Department of Workforce Development, Research and Development, Local Area Unemployment Statistics

Consumer Price Index (CPI-U Change), Unadjusted Percent Change to April 2024 from				
CPI Item	Apr-23	Mar-24	Apr-23	Mar-24
	U.S. City		Midwest Region*	
<b>All Items</b>	<b>3.4%</b>	<b>0.4%</b>	<b>2.8%</b>	<b>0.5%</b>
Food & Beverages	2.2%	0.2%	2.1%	0.1%
Housing	4.5%	0.1%	4.4%	0.5%
Apparel	1.3%	-0.1%	1.3%	0.1%
Transportation	3.5%	1.5%	1.0%	0.8%
Medical Care	2.6%	0.3%	2.1%	1.1%
Recreation	1.5%	0.2%	0.1%	-0.1%
Education & Communication	0.4%	0.1%	-0.2%	0.2%
Other Goods & Services	4.3%	0.5%	7.1%	0.9%

\*Midwest region = Midwest Urban Average. Midwest Region includes Illinois, Indiana, Iowa, Kansas, Michigan, Minnesota, Missouri, Nebraska, North Dakota, Ohio, South Dakota and Wisconsin | Source: U.S. Bureau of Labor Statistics



Source: Indiana Department of Workforce Development, Research and Analysis

## WARN Notices

WARN Notices for Region 5 for April 2024				
Company	City	County	# of workers affected	Notice Date
Pridgeon and Clay, Inc.	Franklin	Johnson	75	4/17/2024
DHL Supply Chain	Clayton	Hendricks	170	4/23/2024
Gannett Publishing Services (Indy Star)	Indianapolis	Marion	1	4/30/2024

**For the month of January, Region 5 had 3 WARN notices, affecting up to 246 people. Please visit <https://www.in.gov/dwd/2567.htm> for details.**

Source: Indiana Department of Workforce Development, WARN Notices | For information on WARN Act requirements, you may go to the U.S. Department of Labor Employment Training Administration Fact Sheet: <https://www.doleta.gov/programs/factsht/warn.htm>

## Unemployment Claims: April 2024

### Region 5

#### Initial Claims

04/06/24 - 610(D)

04/13/24 - 766

04/20/24 - 578(D)

04/27/24 - 571(D)

#### Continued Claims

04/06/24 - 5,234

04/13/24 - 5,022

04/20/24 - 4,925

04/27/24 - 4,885

#### Total Claims

04/06/24 - 5,844

04/13/24 - 5,788

04/20/24 - 5,503

04/27/24 - 5,456

### State of Indiana

#### Initial Claims

04/06/24 - 2,643

04/13/24 - 3,083

04/20/24 - 2,453

04/27/24 - 2,344

#### Continued Claims

04/06/24 - 23,195

04/13/24 - 21,745

04/20/24 - 20,331

04/27/24 - 19,795

#### Total Claims

04/06/24 - 25,838

04/13/24 - 24,828

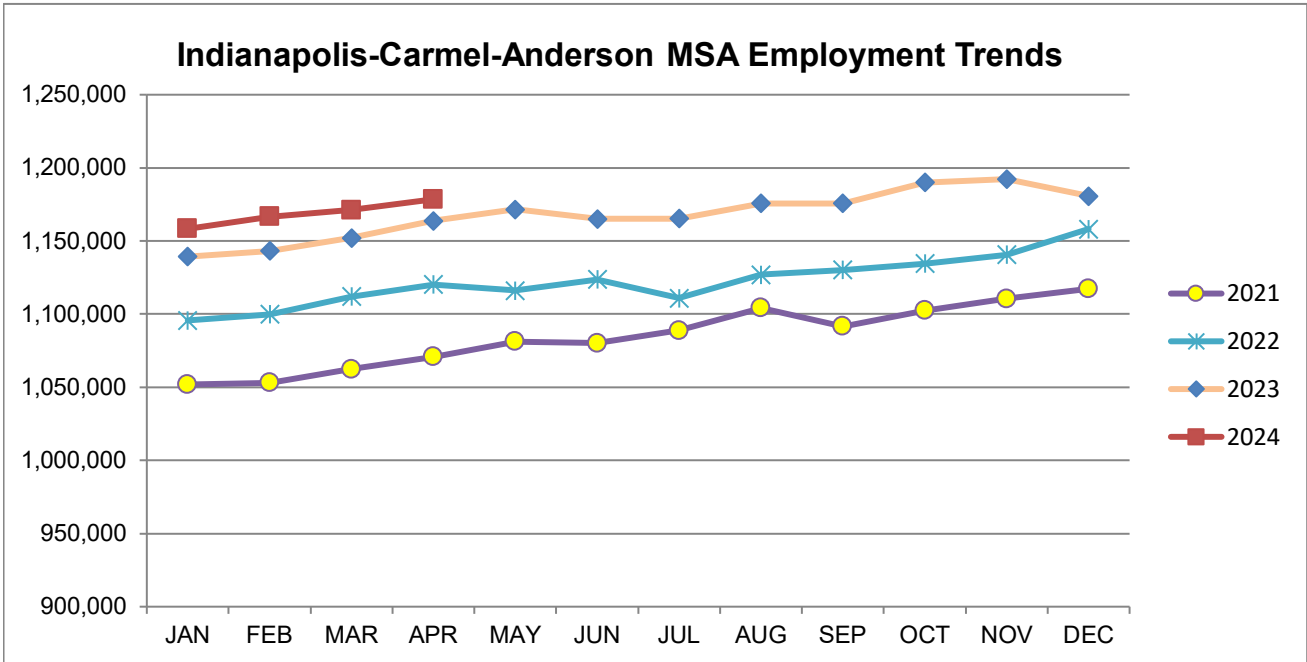
04/20/24 - 22,784

04/27/24 - 22,139

(D) indicates item is affected by non-disclosure issues relating to industry or ownership status | \*Numbers subject to weekly revision | Source: Indiana Department of Workforce Development, Research and Development

Indianapolis-Carmel-Anderson MSA							
Wage and Salaried Employment	April 2024			# Change	% Change	# Change	% Change
Industry	Apr-24	Mar-24	Apr-23	Mar-24 to Apr-24		Apr-23 to Apr-24	
<b>Total Nonfarm</b>	<b>1,178,500</b>	<b>1,171,100</b>	<b>1,151,200</b>	<b>7,400</b>	<b>0.6%</b>	<b>27,300</b>	<b>2.4%</b>
<b>Total Private</b>	<b>1,032,700</b>	<b>1,025,400</b>	<b>1,009,400</b>	<b>7,300</b>	<b>0.7%</b>	<b>23,300</b>	<b>2.3%</b>
Goods Producing	163,900	162,100	158,400	1,800	1.1%	5,500	3.5%
Service-Providing	1,014,600	1,009,000	992,800	5,600	0.6%	21,800	2.2%
Private Service Providing	868,800	863,300	851,000	5,500	0.6%	17,800	2.1%
Mining and Logging	800	800	700	0	0.0%	100	14.3%
Mining, Logging and Construction	64,900	64,100	61,200	800	1.3%	3,700	6.1%
Construction	64,100	63,300	60,500	800	1.3%	3,600	6.0%
Specialty Trade Contractors	40,000	39,600	37,900	400	1.0%	2,100	5.5%
Manufacturing	99,000	98,000	97,200	1,000	1.0%	1,800	1.9%
Durable Goods	53,400	52,600	52,400	800	1.5%	1,000	1.9%
Transportation Equipment Manufacturing	15,000	14,900	14,600	100	0.7%	400	2.7%
Motor Vehicle Parts Manufacturing	10,000	9,900	9,700	100	1.0%	300	3.1%
Non-Durable Goods	45,600	45,400	44,800	200	0.4%	800	1.8%
Chemical Manufacturing	19,700	19,700	19,000	0	0.0%	700	3.7%
Trade, Transportation, and Utilities	245,500	246,000	243,300	-500	-0.2%	2,200	0.9%
Wholesale Trade	56,100	56,400	55,400	-300	-0.5%	700	1.3%
Merchant Wholesalers, Durable Goods	36,400	36,700	35,700	-300	-0.8%	700	2.0%
Retail Trade	99,400	99,500	98,600	-100	-0.1%	800	0.8%
General Merchandise Stores	24,300	24,300	23,600	0	0.0%	700	3.0%
Department Stores	4,300	4,200	4,000	100	2.4%	300	7.5%
Other General Merchandise Stores	20,000	20,100	19,600	-100	-0.5%	400	2.0%
Transportation, Warehousing, and Utilities	90,000	90,100	89,300	-100	-0.1%	700	0.8%
Transportation and Warehousing	86,700	86,900	86,000	-200	-0.2%	700	0.8%
Information	11,900	12,000	12,500	-100	-0.8%	-600	-4.8%
Telecommunications	2,800	2,900	2,900	-100	-3.5%	-100	-3.5%
Financial Activities	74,600	74,500	74,900	100	0.1%	-300	-0.4%
Finance and Insurance	57,100	57,000	57,700	100	0.2%	-600	-1.0%
Insurance Carriers and Related Activities	36,100	36,000	36,100	100	0.3%	0	0.0%
Insurance Carriers	20,000	19,900	20,000	100	0.5%	0	0.0%
Professional and Business Services	185,900	184,200	186,700	1,700	0.9%	-800	-0.4%
Professional, Scientific, and Technical Services	81,500	80,000	82,000	1,500	1.9%	-500	-0.6%
Management of Companies and Enterprises	14,900	14,800	14,600	100	0.7%	300	2.1%
Administrative and Support and Waste Management and Remediation Services	89,500	89,400	90,100	100	0.1%	-600	-0.7%
Administrative and Support Services	85,600	85,400	85,500	200	0.2%	100	0.1%
Employment Services	42,800	42,700	43,300	100	0.2%	-500	-1.2%
Education and Health Services	191,500	190,700	179,600	800	0.4%	11,900	6.6%
Educational Services	24,300	23,700	23,400	600	2.5%	900	3.9%
Health Care and Social Assistance	167,200	167,000	156,200	200	0.1%	11,000	7.0%
Ambulatory Health Care Services	73,200	73,100	68,400	100	0.1%	4,800	7.0%
Hospitals	46,300	46,300	44,000	0	0.0%	2,300	5.2%
Leisure and Hospitality	113,900	109,700	109,700	4,200	3.8%	4,200	3.8%
Accommodation and Food Services	92,800	91,100	92,600	1,700	1.9%	200	0.2%
Food Services and Drinking Places	84,300	83,100	84,900	1,200	1.4%	-600	-0.7%
Restaurants and Other Eating Places	76,000	74,900	76,700	1,100	1.5%	-700	-0.9%
Full-service restaurants	36,300	35,800	36,500	500	1.4%	-200	-0.6%
Limited-Service Restaurants and Other Eating Places	39,700	39,100	40,200	600	1.5%	-500	-1.2%
Other Services	45,500	46,200	44,300	-700	-1.5%	1,200	2.7%
<b>Total Government</b>	<b>145,800</b>	<b>145,700</b>	<b>141,800</b>	<b>100</b>	<b>0.1%</b>	<b>4,000</b>	<b>2.8%</b>
Federal Government	18,900	19,100	18,300	-200	-1.1%	600	3.3%
State Government	36,900	36,600	36,300	300	0.8%	600	1.7%
Local Government	90,000	90,000	87,200	0	0.0%	2,800	3.2%
Local Government Educational Services	44,800	45,300	43,700	-500	-1.1%	1,100	2.5%

Source: Indiana Dept of Workforce Development, Research and Analysis, Current Employment Statistics



Source: Indiana Department of Workforce Development, Research & Analysis, Current Employment Statistics | *Note:* Historical data for the most recent 4 years (both seasonally adjusted and not seasonally adjusted) are revised near the beginning of each calendar year, prior to the release of January estimates for statewide data.

Frequently Listed Jobs	
Top 20 job listings by number of openings in Region 5 in the past month	
Rank	Occupations
1	Registered Nurses
2	Stockers and Order Fillers
3	Retail Salespersons
4	Software Developers
5	Accountants and Auditors
6	Sales Managers
7	Maintenance and Repair Workers, General
8	General and Operations Managers
9	Licensed Practical and Licensed Vocational Nurses
10	Customer Service Representatives
11	Marketing Managers
12	Nursing Assistants
13	Sales Representatives of Services, Except Advertising, Insurance, Financial Services, and Travel
14	Sales Representatives, Wholesale and Manufacturing, Except Technical and Scientific Products
15	Construction Managers
16	Computer User Support Specialists
17	Laborers and Freight, Stock, and Material Movers, Hand
18	Heavy and Tractor-Trailer Truck Drivers
19	Critical Care Nurses
20	Civil Engineers

Source: Indiana Workforce Development, Indiana Career Connect

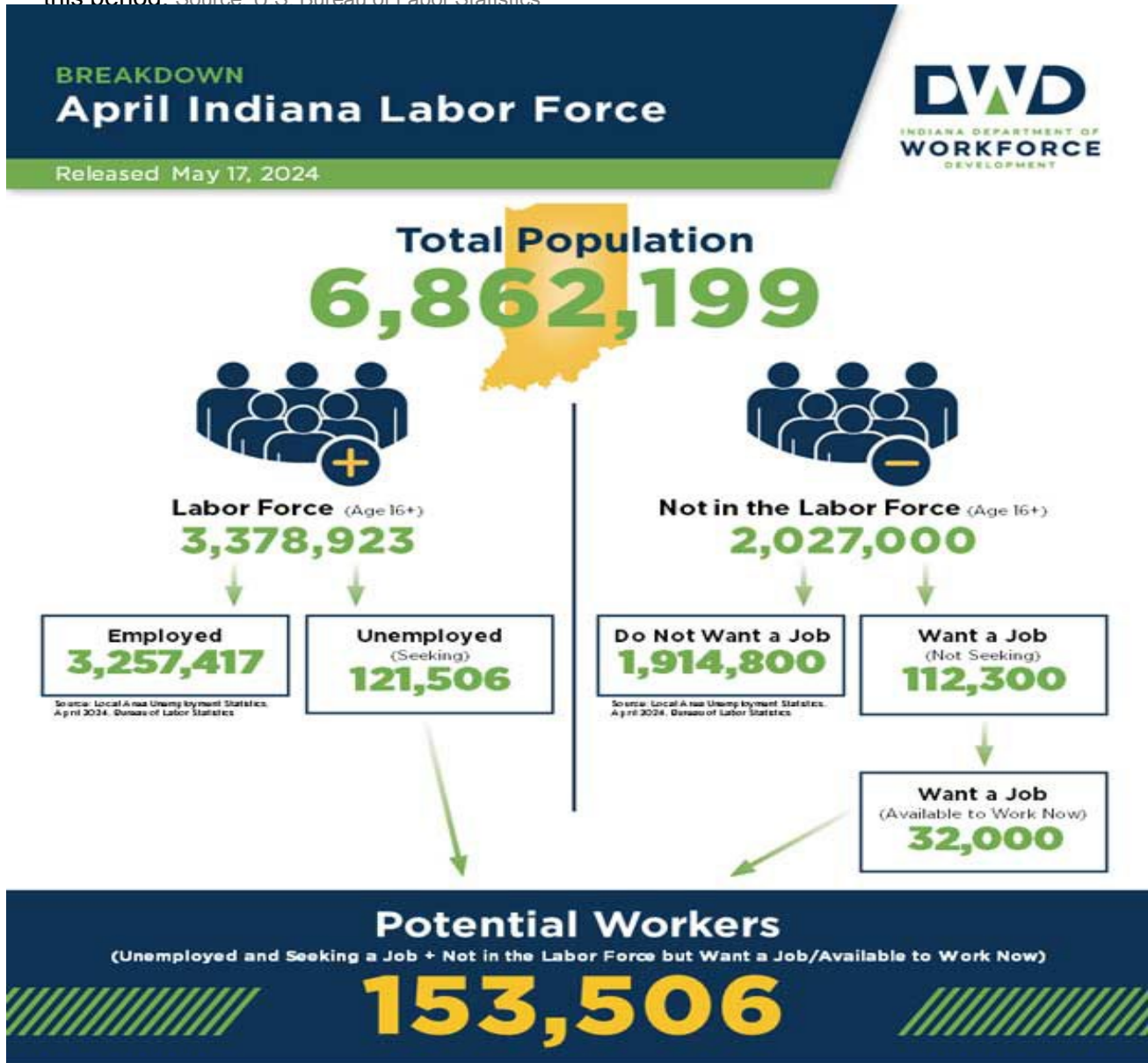
Applicant Pool	
Top 20 occupations desired by applicants on their resumes in the past 12 months	
Occupations	# of applicants
Customer Service Representatives	2,424
Production Workers, All Other	1,567
Laborers and Freight, Stock, and Material Movers, Hand	1,348
Assemblers and Fabricators, All Other	1,182
Cashiers	1,117
Helpers--Production Workers	901
Heavy and Tractor-Trailer Truck Drivers	773
Office Clerks, General	744
Managers, All Other	684
Industrial Truck and Tractor Operators	655
Packers and Packagers, Hand	621
Office and Administrative Support Workers, All Other	566
Executive Secretaries and Executive Administrative Assistants	515
Retail Salespersons	496
Receptionists and Information Clerks	474
Data Entry Keyers	446
General and Operations Managers	419
Shipping, Receiving, and Traffic Clerks	409
Sales Managers	371
Material Moving Workers, All Other	371

Source: Indiana Workforce Development, Indiana Career Connect

# Real Earnings Summary

## REAL EARNINGS – APRIL 2024

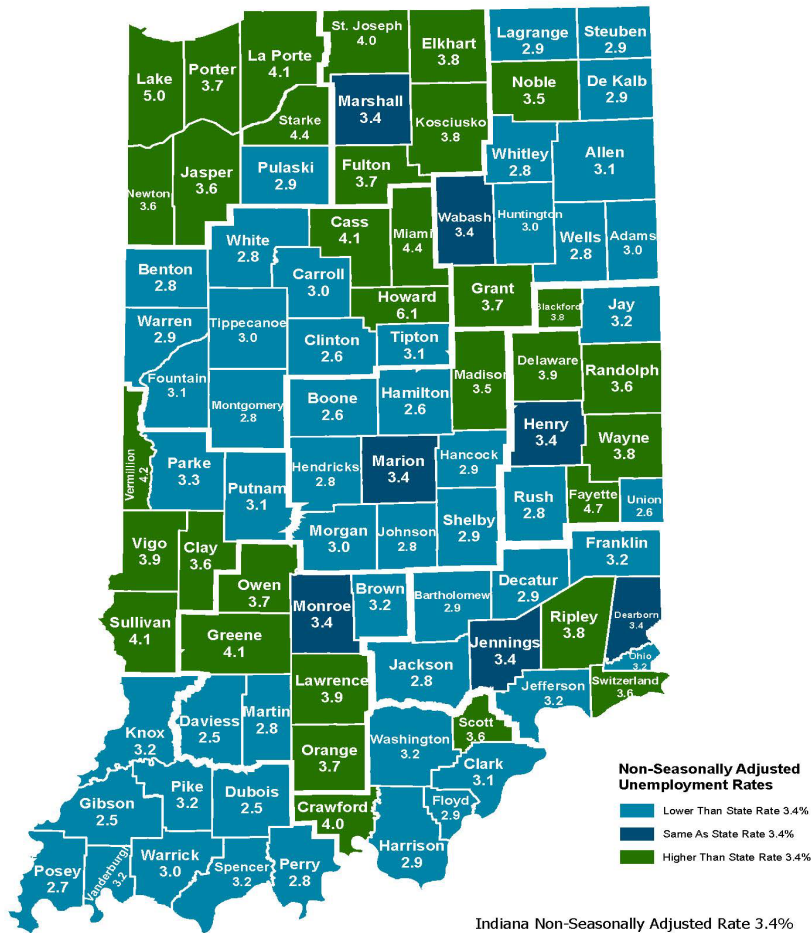
Real average hourly earnings for all employees decreased 0.2 percent from March to April, seasonally adjusted, the U.S. Bureau of Labor Statistics reported. This result stems from an increase of 0.2 percent in average hourly earnings combined with an increase of 0.3 percent in the Consumer Price Index for All Urban Consumers (CPI-U). Real average weekly earnings decreased 0.4 percent over the month due to the change in real average hourly earnings combined with a 0.3-percent decrease in the average workweek. Real average hourly earnings increased 0.5 percent, seasonally adjusted, from April 2023 to April 2024. The change in real average hourly earnings combined with no change in the average workweek resulted in a 0.5-percent increase in real average weekly earnings over this period. Source: U.S. Bureau of Labor Statistics



More about the U.S. Bureau of Labor Statistics data sources used within:  
 Local Area Unemployment Statistics (LAUS): Captures Indiana's labor force, which includes those currently employed and those who are unemployed and actively seeking work.  
 Census Population Survey (CPS): Captures individuals not participating in Indiana's Labor Force. This set includes non-participants that do not want a job (i.e., retirees and students) and those that want a job, but are not actively seeking work.  
 U.S. Census Bureau, Indiana Population 2023.

Resource: Notes on Using Census Population Survey (CPS) Situational Data and Differences Between CPS and LAUS Estimates

## County Unemployment Rates April 2024



Indiana Non-Seasonally Adjusted Rate 3.4%  
 Indiana Seasonally Adjusted Rate 3.6%  
 Source: DWD, Local Area Unemployment Statistics



### Questions?

Please contact the DWD  
 Research and Analysis  
 Regional Labor Analyst  
 listed below:

**Mike Petro**  
 Regional Labor Analyst  
 Research and Analysis

[Indiana Department of Workforce Development](http://Indiana Department of Workforce Development)  
[gpetro@dwd.in.gov](mailto:gpetro@dwd.in.gov)