



# HOOSIERS BY THE NUMBERS

Your premier source for labor market information for Indiana.



## INDUSTRY SECTOR SNAPSHOT

### Economic Growth Region 5

Quarter 3 2023

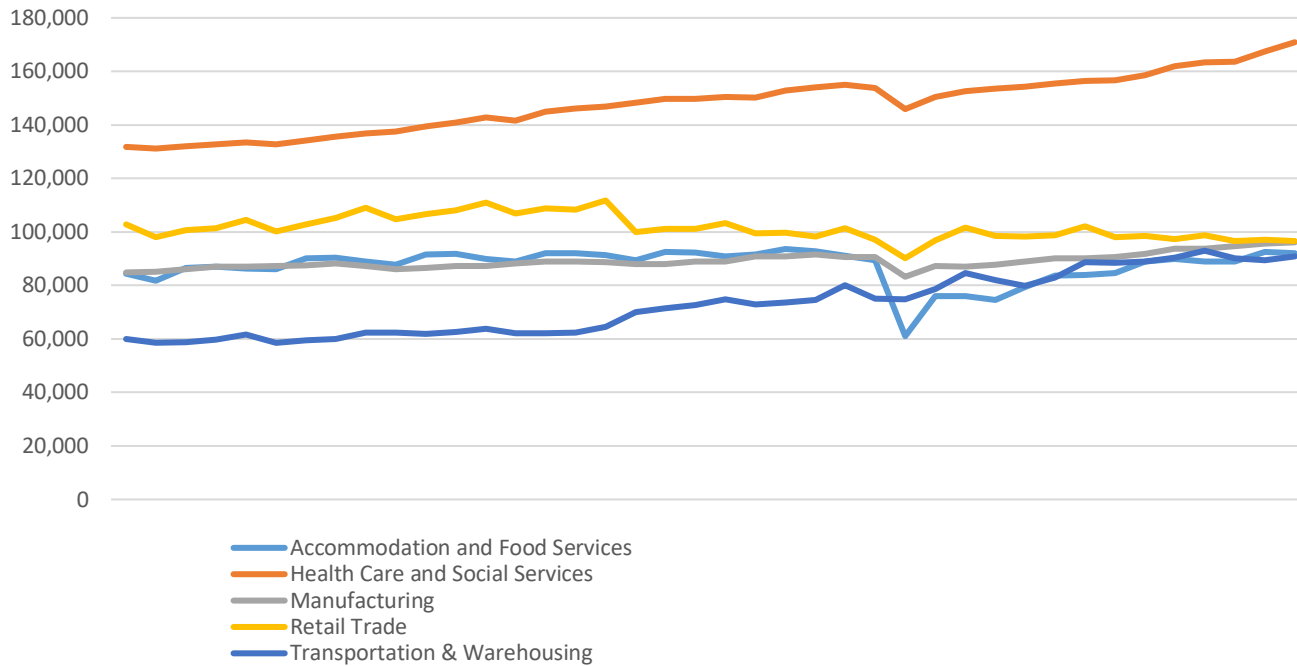
Boone, Hamilton, Hancock, Hendricks, Johnson, Madison, Marion, Morgan, and Shelby Counties

Industry	Jobs	Previous Year	Establishments	Previous Year	Average Weekly Wage	Previous Year
<b>Total</b>	<b>1,076,103</b>	<b>↑ 1.83%</b>	<b>51,208</b>	<b>↑ 0.70%</b>	<b>\$1,211</b>	<b>↓ -1.06%</b>
Accommodation and Food Services	91,984	↑ 2.25%	4,228	↑ 0.96%	\$482	↓ -0.62%
Admin. & Support & Waste Mgt. & Rem. Services	82,322	↓ -6.02%	3,501	↓ -5.17%	\$888	↓ -2.31%
Agriculture, Forestry, Fishing and Hunting	2,393	↑ 1.70%	216	↓ -2.70%	\$1,047	↑ 0.96%
Arts, Entertainment, and Recreation*	19,524	↑ 11.06%	805	↑ 2.42%	\$1,019	↓ -1.36%
Construction	61,408	↑ 4.68%	4,156	↓ -0.72%	\$1,472	↑ 0.89%
Educational Services	67,963	↑ 3.21%	1,131	↑ 3.76%	\$1,037	↓ -0.19%
Finance and Insurance	47,962	↓ -1.62%	3,343	↑ 0.15%	\$1,749	↑ 1.45%
Health Care and Social Services	170,896	↑ 5.56%	5,004	↑ 2.37%	\$1,302	↓ -5.10%
Information	12,030	↓ -0.91%	881	↑ 5.51%	\$1,501	↓ -1.05%
Management of Companies and Enterprises*	13,477	↑ 0.24%	397	↑ 3.93%	\$1,823	↓ -2.62%
Manufacturing	96,109	↑ 2.61%	1,878	↓ -1.26%	\$1,577	↓ -0.25%
Mining*	632	↑ 15.12%	44	↓ -4.35%	\$1,613	↓ -2.18%
Other Services (Except Public Administration)	33,025	↑ 4.86%	4,160	↑ 0.17%	\$919	↓ -0.65%
Professional, Scientific, and Technical Services	71,068	↑ 0.75%	7,424	↑ 3.93%	\$1,770	↓ -0.56%
Public Administration	46,893	↑ 3.21%	370	↓ -18.14%	\$1,315	↑ 4.61%
Real Estate and Rental and Leasing	16,952	↓ -0.13%	2,562	↑ 0.43%	\$1,243	↓ -9.47%
Retail Trade	96,678	↓ -0.61%	5,448	↓ -0.73%	\$762	↓ -4.51%
Transportation & Warehousing	90,790	↑ 0.52%	1,942	↑ 0.57%	\$1,102	↓ -0.09%
Utilities*	4,514	↑ 0.53%	106	↑ 6.00%	\$2,047	↑ 4.33%
Wholesale Trade	48,377	↑ 3.82%	3,612	↑ 4.09%	\$1,621	↑ 0.68%

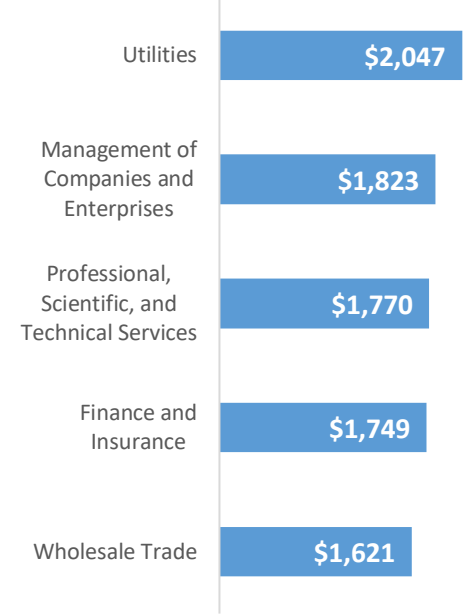
\* These industries exclude county data (jobs and wages) that are not available due to non-disclosure requirements.

D = This item is not available due to non-disclosure requirements.

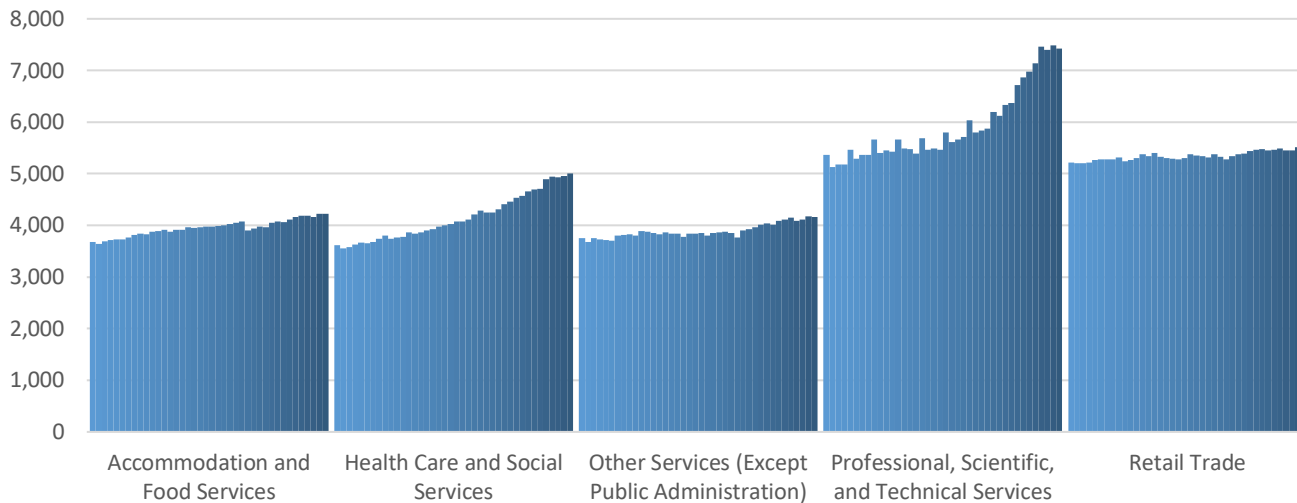
### Top 5 Largest Industries by Jobs (past 10 years)



### Top 5 Paying Industries by Average Weekly Wage



### Top 5 Largest Industries by Establishments (past 10 years)



Source:

*Quarterly Census of Employment and Wages, Indiana Dept. of Workforce Development*

For more information, contact:

**Mike Petro**

Regional Workforce Analyst

317.537.1316

[gpetro@dwd.in.gov](mailto:gpetro@dwd.in.gov)

