



HOOSIERS BY THE NUMBERS

Your premier source for labor market information for Indiana.



INDIANA
DEPARTMENT OF
WORKFORCE
DEVELOPMENT

LABOR MARKET REVIEW



February 2021 Labor Market Review

Reported by: Cassie Janes

Regional Workforce Analyst

[Email Cassie](#)

cjanes@dwd.in.gov

Tel: 765-454-4760



INDIANA
DEPARTMENT OF
WORKFORCE
DEVELOPMENT

LABOR MARKET REVIEW

Economic Growth Region 4

Statistical Data Report for February 2021, Released April 2021

State Employment and Unemployment

Unemployment rates were lower in February in 23 states and the District of Columbia, higher in 4 states, and stable in 23 states, the U.S. Bureau of Labor Statistics reported. Forty-five states and the District had jobless rate increases from a year earlier and five states had little or no change. The national unemployment rate, 6.2 percent, was little changed over the month, but was 2.7 percentage points higher than in February 2020.



Economic Growth Region (EGR) 4

Benton, Carroll, Cass, Clinton, Fountain, Howard, Miami, Montgomery, Tippecanoe, Tipton, Warren and White Counties.

February 2021 Labor Force Estimates (not seasonally adjusted)						
Area	Labor Force	Employed	Unemployed	Feb-21	Jan-21	Feb-20
U.S.	160,008,000	149,522,000	10,486,000	6.6%	6.8%	3.8%
IN	3,300,855	3,144,768	156,087	4.7%	4.7%	3.4%
EGR 4	247,016	234,878	12,138	4.9%	4.3%	3.3%
Kokomo MSA	35,894	32,827	3,067	8.5%	6.1%	4.0%
Lafayette MSA	110,044	105,461	4,583	4.2%	4.2%	3.0%
Benton Co.	4,299	4,130	169	3.9%	3.9%	3.1%
Carroll Co.	9,749	9,342	407	4.2%	3.6%	3.4%
Cass Co.	17,408	16,516	892	5.1%	4.4%	3.9%
Clinton Co.	16,882	16,253	629	3.7%	3.8%	2.6%
Fountain Co.	7,635	7,320	315	4.1%	3.9%	3.5%
Howard Co.	35,894	32,827	3,067	8.5%	6.1%	4.0%
Miami Co.	14,752	13,794	958	6.5%	5.0%	4.3%
Montgomery Co.	18,273	17,607	666	3.6%	3.6%	3.0%
Tippecanoe Co.	95,996	91,989	4,007	4.2%	4.2%	3.0%
Tipton Co.	9,002	8,578	424	4.7%	3.2%	2.9%
Warren Co.	3,967	3,820	147	3.7%	3.3%	3.0%
White Co.	13,159	12,702	457	3.5%	3.4%	2.8%
Attica	1,471	1,413	58	3.9%	4.4%	3.3%
Crawfordsville	7,124	6,818	306	4.3%	4.7%	3.2%
Delphi	1,257	1,203	54	4.3%	3.6%	3.0%
Fowler	1,062	1,023	39	3.7%	3.8%	3.3%
Frankfort	8,000	7,662	338	4.2%	4.3%	2.6%
Kokomo	24,832	22,513	2,319	9.3%	7.1%	4.3%
Lafayette	37,332	35,420	1,912	5.1%	5.8%	2.9%
Logansport	7,634	7,270	364	4.8%	4.7%	3.9%
Monticello	2,610	2,514	96	3.7%	3.5%	2.6%
Peru	4,425	4,127	298	6.7%	5.4%	4.7%
Tipton	2,666	2,525	141	5.3%	4.3%	3.4%
West Lafayette	22,587	21,964	623	2.8%	2.4%	2.6%
Williamsport	801	771	30	3.7%	3.7%	3.4%

Unemployment Rates by State (seasonally adjusted): February 2021

U.S. - 6.2%

Illinois - 7.4%

Indiana - 4%

Kentucky - 5.2%

Michigan - 5.2%

Ohio - 5%

Source: U.S. Department of Labor, Bureau of Labor Statistics

Unemployment Rank by County (of 92 counties): February 2021

#1 - Howard (8.5%)

#4 - Miami (6.5%)

#20 - Cass (5.1%)

#33 - Tipton (4.7%)

#48 - Carroll (4.2%)

#52 - Tippecanoe (4.2%)

#53 - Fountain (4.1%)

#61 - Benton (3.9%)

#69 - Clinton (3.7%)

#75 - Warren (3.7%)

#78 - Montgomery (3.6%)

#84 - White (3.5%)

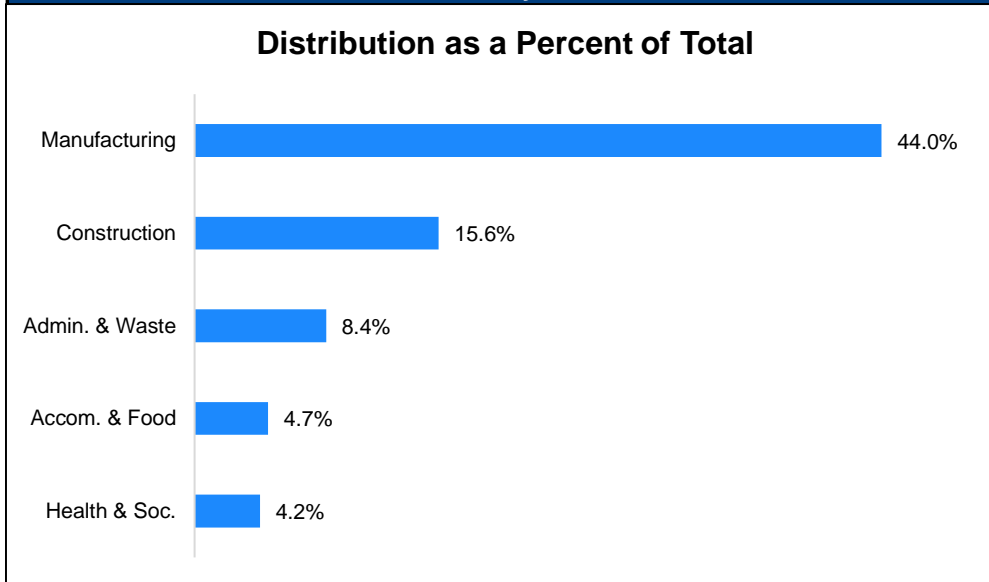
Source: Indiana Department of Workforce Development, Research and Development, Local Area Unemployment Statistics

Source: Indiana Department of Workforce Development, Research & Analysis, Local Area Unemployment Statistics | Unemployment Statistics Released:03/21 | Notes: The data displayed are presented as estimates only. The most recent month's data are always preliminary and are revised when the next month's data are released.

Consumer Price Index (CPI-U Change), Unadjusted Percent Change to February 2021 from				
CPI Item	Feb-20	Jan-21	Feb-20	Jan-21
	U.S. City		Midwest Region*	
All Items	1.7%	0.5%	1.7%	0.8%
Food & Beverages	3.5%	0.2%	2.8%	0.1%
Housing	1.8%	0.3%	1.9%	0.5%
Apparel	-3.6%	1.9%	-2.1%	2.4%
Transportation	0.6%	1.7%	0.6%	2.3%
Medical Care	2.0%	0.4%	2.5%	0.5%
Recreation	0.8%	0.7%	1.5%	1.2%
Education & Communication	1.7%	0.1%	1.5%	0.2%
Other Goods & Services	2.1%	0.4%	0.6%	0.1%

*Midwest region = Midwest Urban Average. Midwest Region includes Illinois, Indiana, Iowa, Kansas, Michigan, Minnesota, Missouri, Nebraska, North Dakota, Ohio, South Dakota and Wisconsin | Source: U.S. Bureau of Labor Statistics

Percentage of Unemployment Claims for Top 5 Region 4 Industries February 2021



Source: Indiana Department of Workforce Development, Research and Analysis

WARN Notices

WARN Notices for Region 4 for February 2021				
Company	City	County	# of workers affected	Notice Date
Coca-Cola Consolidated, Inc.	Lafayette	Tippecanoe	52	2/15/2021

Source: Indiana Department of Workforce Development, WARN Notices | For information on WARN Act requirements, you may go to the U.S. Department of Labor Employment Training Administration Fact Sheet:

<https://www.doleta.gov/programs/factsht/warn.htm>

Unemployment Claims: February 2021

Region 4

Initial Claims

02/06/21 - 1,362(D)

02/13/21 - 2,510

02/20/21 - 1,322

02/27/21 - 1,545

Continued Claims

02/06/21 - 4,815

02/13/21 - 4,847

02/20/21 - 4,276

02/27/21 - 4,036

Total Claims

02/06/21 - 6,177

02/13/21 - 7,357

02/20/21 - 5,598

02/27/21 - 5,581

State of Indiana

Initial Claims

02/06/21 - 13,508

02/13/21 - 12,287

02/20/21 - 9,735

02/27/21 - 10,081

Continued Claims

02/06/21 - 77,782

02/13/21 - 73,668

02/20/21 - 72,770

02/27/21 - 69,343

Total Claims

02/06/21 - 91,290

02/13/21 - 85,955

02/20/21 - 82,505

02/27/21 - 79,424

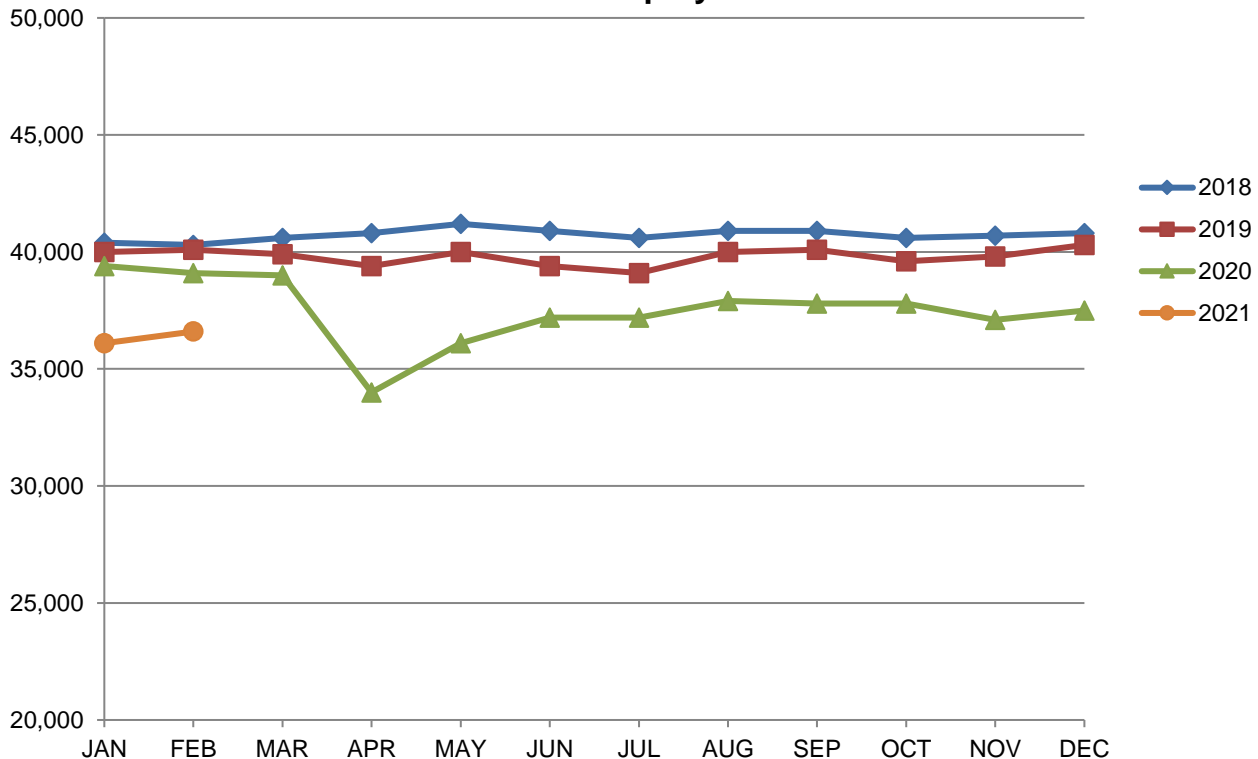
(D) indicates item is affected by non-disclosure issues relating to industry or ownership status |

Source: Indiana Department of Workforce Development, Research and Development

Kokomo MSA							
Wage and Salaried Employment	February 2021			# Change	% Change	# Change	% Change
Industry	Feb-21	Jan-21	Feb-20	Jan-21 to Feb-21		Feb-20 to Feb-21	
Total Nonfarm	36,600	36,100	39,100	500	1.4%	-2,500	-6.4%
Total Private	32,000	31,800	34,400	200	0.6%	-2,400	-7.0%
Goods Producing	11,300	11,300	12,000	0	0.0%	-700	-5.8%
Service-Providing	25,300	24,800	27,100	500	2.0%	-1,800	-6.6%
Private Service Providing	20,700	20,500	22,400	200	1.0%	-1,700	-7.6%
Mining, Logging and Construction	1,200	1,200	1,200	0	0.0%	0	0.0%
Manufacturing	10,100	10,100	10,800	0	0.0%	-700	-6.5%
Trade, Transportation, and Utilities	6,400	6,500	6,300	-100	-1.5%	100	1.6%
Wholesale Trade	900	900	900	0	0.0%	0	0.0%
Retail Trade	4,600	4,600	4,500	0	0.0%	100	2.2%
Transportation, Warehousing, and Utilities	900	1,000	900	-100	-10.0%	0	0.0%
Information	200	200	200	0	0.0%	0	0.0%
Financial Activities	1,200	1,200	1,200	0	0.0%	0	0.0%
Leisure and Hospitality	3,900	3,800	4,300	100	2.6%	-400	-9.3%
Other Services	1,800	1,800	2,200	0	0.0%	-400	-18.2%
Government	4,600	4,300	4,700	300	7.0%	-100	-2.1%
Local Government	3,400	3,300	3,500	100	3.0%	-100	-2.9%
Local Government Educational Services	2,000	2,000	2,200	0	0.0%	-200	-9.1%
Local Government excluding Educational Services	1,400	1,300	1,300	100	7.7%	100	7.7%

Source: Indiana Dept of Workforce Development, Research and Analysis, Current Employment Statistics

Kokomo MSA Employment Trends

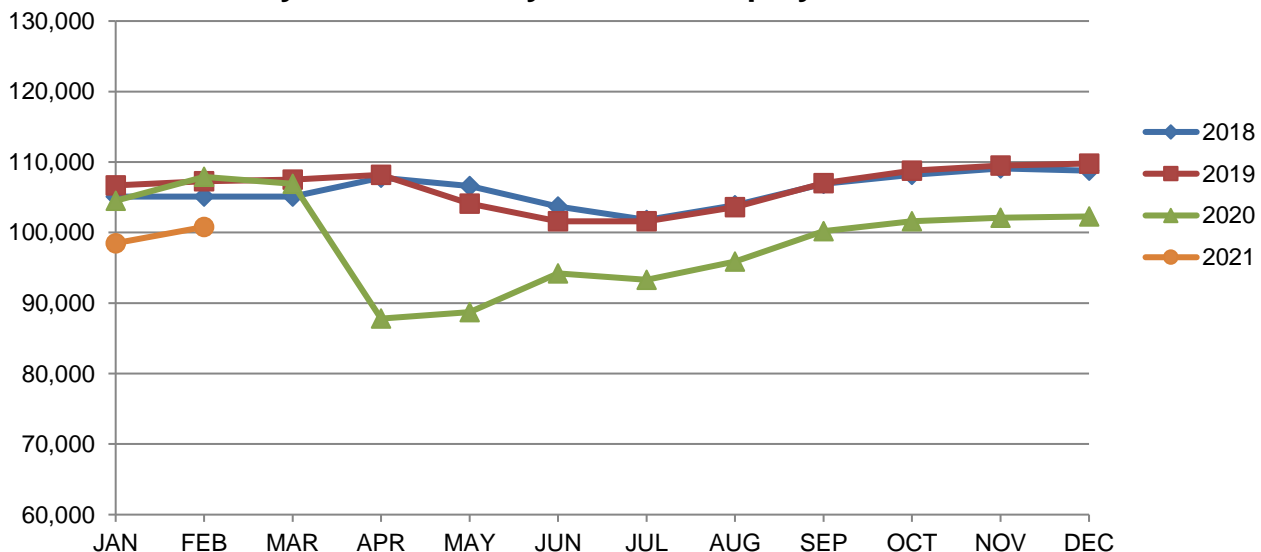


Source: Indiana Department of Workforce Development, Research & Analysis, Current Employment Statistics | Note: Historical data for the most recent 4 years (both seasonally adjusted and not seasonally adjusted) are revised near the beginning of each calendar year, prior to the release of January estimates for statewide data.

Lafayette-West Lafayette MSA							
Wage and Salaried Employment	February 2021			# Change	% Change	# Change	% Change
Industry	Feb-21	Jan-21	Feb-20	Jan-21 to Feb-21		Feb-20 to Feb-21	
Total Nonfarm	100,800	98,500	107,900	2,300	2.3%	-7,100	-6.6%
Total Private	74,000	74,400	77,700	-400	-0.5%	-3,700	-4.8%
Goods Producing	22,500	22,500	23,600	0	0.0%	-1,100	-4.7%
Service Providing	78,300	76,000	84,300	2,300	3.0%	-6,000	-7.1%
Private Service Providing	51,500	51,900	54,100	-400	-0.8%	-2,600	-4.8%
Mining, Logging and Construction	3,500	3,600	3,700	-100	-2.8%	-200	-5.4%
Manufacturing	19,000	18,900	19,900	100	0.5%	-900	-4.5%
Durable Goods	14,500	14,500	15,300	0	0.0%	-800	-5.2%
Trade, Transportation and Utilities	14,100	14,300	14,200	-200	-1.4%	-100	-0.7%
Wholesale Trade	2,200	2,200	2,400	0	0.0%	-200	-8.3%
Retail Trade	9,000	9,100	9,100	-100	-1.1%	-100	-1.1%
Transportation, Warehousing and Utilities	2,900	3,000	2,700	-100	-3.3%	200	7.4%
Information	600	600	700	0	0.0%	-100	-14.3%
Financial Activities	3,100	3,300	3,300	-200	-6.1%	-200	-6.1%
Professional and Business Services	7,100	7,200	7,600	-100	-1.4%	-500	-6.6%
Education and Health Services	13,400	13,500	13,500	-100	-0.7%	-100	-0.7%
Leisure and Hospitality	9,100	8,900	10,300	200	2.3%	-1,200	-11.7%
Accommodation and Food Services	8,200	8,000	9,500	200	2.5%	-1,300	-13.7%
Other Services	4,100	4,100	4,500	0	0.0%	-400	-8.9%
Total Government	26,800	24,100	30,200	2,700	11.2%	-3,400	-11.3%
Federal Government	500	500	500	0	0.0%	0	0.0%
State Government	19,600	17,000	22,700	2,600	15.3%	-3,100	-13.7%
Local Government	6,700	6,600	7,000	100	1.5%	-300	-4.3%
Local Government Educational Services	4,100	3,900	4,300	200	5.1%	-200	-4.7%

Source: Indiana Dept of Workforce Development, Research and Analysis, Current Employment Statistics

Lafayette-West Lafayette MSA Employment Trends



Source: Indiana Department of Workforce Development, Research & Analysis, Current Employment Statistics | Note: Historical data for the most recent 4 years (both seasonally adjusted and not seasonally adjusted) are revised near the beginning of each calendar year, prior to the release of January estimates for statewide data.

Frequently Listed Jobs	
Top 20 job listings by number of openings in Region 4 in the past month	
Rank	Occupations
1	Farmworkers and Laborers, Crop
2	Registered Nurses
3	Nursing Assistants
4	Licensed Practical and Licensed Vocational Nurses
5	Cooks, Institution and Cafeteria
6	Home Health Aides
7	Social and Human Service Assistants
8	Agricultural Workers, All Other
9	Dining Room and Cafeteria Attendants and Bartender Helpers
10	Health Technologists and Technicians, All Other
11	Software Developers, Applications
12	Information Security Analysts
13	Maids and Housekeeping Cleaners
14	Medical and Health Services Managers
15	Personal Care Aides
16	Network and Computer Systems Administrators
17	Order Fillers, Wholesale and Retail Sales
18	Security Guards
19	Computer User Support Specialists
20	Mental Health and Substance Abuse Social Workers

Source: Indiana Workforce Development, Indiana Career Connect

Applicant Pool	
Top 20 occupations desired by applicants on their resumes in the past 12 months	
Occupations	# of applicants
Production Workers, All Other	6704
Assemblers and Fabricators, All Other	5490
Helpers--Production Workers	3432
Laborers and Freight, Stock, and Material Movers, Hand	2463
Cashiers	1868
Customer Service Representatives	1360
Industrial Truck and Tractor Operators	1098
Managers, All Other	1096
Extraction Workers, All Other	1084
Stock Clerks and Order Fillers	1070
Office and Administrative Support Workers, All Other	1066
Office Clerks, General	1048
Team Assemblers	999
First-Line Supervisors of Production and Operating Workers	948
Welders, Cutters, Solderers, and Brazers	934
Electrical and Electronic Equipment Assemblers	931
Inspectors, Testers, Sorters, Samplers, and Weighers	903
Retail Salespersons	872
Nursing Assistants	832
Packers and Packagers, Hand	823

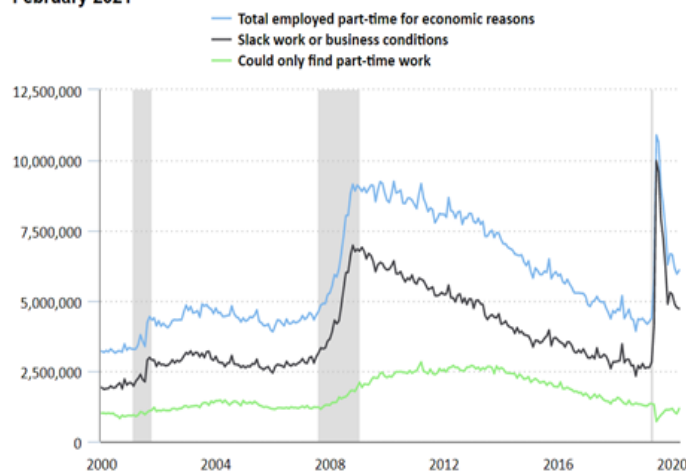
Source: Indiana Workforce Development, Indiana Career Connect

Number of involuntary part-time workers in February 2021 down from record highs

MARCH 10, 2021

The number of people at work part time for economic reasons, also called involuntary part-time workers, totaled 6.1 million in February 2021. This was down from 10.9 million in April 2020 but is 1.7 million higher than in February 2020. These workers would have preferred full-time employment but were working part time because their hours had been reduced due to slack work or they were unable to find full-time jobs.

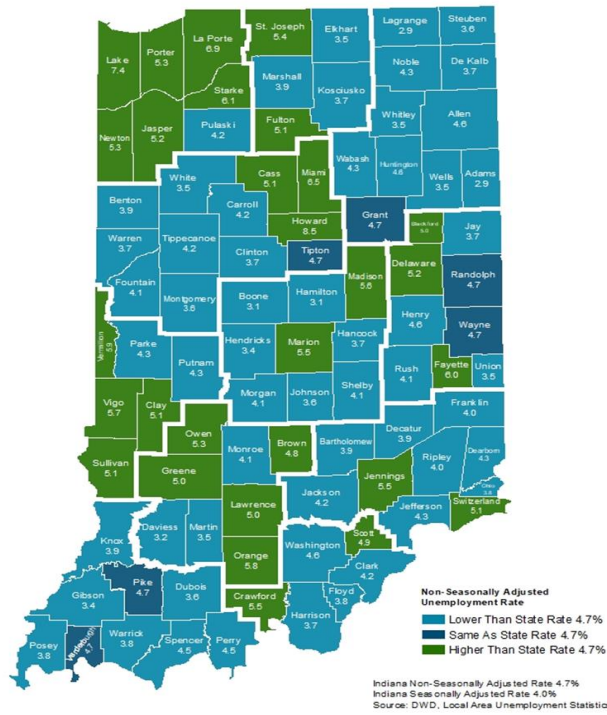
Number of people employed part time for economic reasons, January 2000 to February 2021



The share of the employed who were involuntary part-time workers increased sharply following the onset of the COVID-19 pandemic, as businesses around the country cut back operations in response to the pandemic and efforts to contain the spread of the virus. The share was 2.8 percent in February 2020 but rose to 8.2 percent in April 2020. By February 2021, this share had fallen to 4.1 percent. The rapid rise of involuntary part-time work and subsequent decline occurred almost entirely among those whose hours were cut due to slack work or business conditions; the changes among those who could only find part-time jobs were comparatively small.

Bureau of Labor Statistics, U.S. Department of Labor, *The Economics Daily*, Number of involuntary part-time workers in February 2021 down from record highs at <https://www.bls.gov/opub/ted/2021/number-of-involuntary-part-time-workers-in-february-2021-down-from-record-highs.htm>

County Unemployment Rates February 2021



INDIANA
 DEPARTMENT OF
WORKFORCE
 DEVELOPMENT

Questions?

Please contact the DWD
 Research and Analysis
 Regional Labor Analyst
 listed below:

Cassie Janes
 Regional Labor Analyst
 Research and Analysis

[Indiana Department of
 Workforce Development](http://www.in.gov/dwd)

709 S. Reed Rd
 Kokomo, IN 46901

765-454-4760

cjan@dw.in.gov