



HOOSIERS BY THE NUMBERS

Your premier source for labor market information for Indiana.



INDIANA
DEPARTMENT OF
WORKFORCE
DEVELOPMENT

LABOR MARKET REVIEW



November 2020 Labor Market Review

Reported by: **Cassie Janes**

Regional Workforce Analyst

[Email Cassie](#)

cjanes@dwd.in.gov

Tel: 765-454-4760



INDIANA
DEPARTMENT OF
WORKFORCE
DEVELOPMENT

LABOR MARKET REVIEW

Economic Growth Region 4

Statistical Data Report for November 2020, Released January 2021

State Employment and Unemployment

Unemployment rates were lower in November in 25 states and the District of Columbia, higher in 7 states, and stable in 18 states, the U.S. Bureau of Labor Statistics reported. Forty-eight states and the District had jobless rate increases from a year earlier and two states had little change.



Economic Growth Region (EGR) 4

Benton, Carroll, Cass, Clinton, Fountain, Howard, Miami, Montgomery, Tippecanoe, Tipton, Warren and White Counties.

November 2020 Labor Force Estimates (not seasonally adjusted)						
Area	Labor Force	Employed	Unemployed	Nov-20	Oct-20	Nov-19
U.S.	160,468,000	150,203,000	10,264,000	6.4%	6.6%	3.3%
IN	3,325,870	3,163,343	162,527	4.9%	5.3%	3.1%
EGR 4	248,626	237,643	10,983	4.4%	4.7%	2.9%
Kokomo MSA	36,438	34,399	2,039	5.6%	6.0%	3.3%
Lafayette MSA	112,310	107,388	4,922	4.4%	4.7%	2.7%
Benton Co.	4,506	4,342	164	3.6%	3.8%	2.8%
Carroll Co.	10,118	9,739	379	3.7%	3.9%	2.7%
Cass Co.	16,668	15,935	733	4.4%	4.7%	3.1%
Clinton Co.	16,726	16,064	662	4.0%	4.1%	2.5%
Fountain Co.	7,643	7,356	287	3.8%	4.0%	3.4%
Howard Co.	36,438	34,399	2,039	5.6%	6.0%	3.3%
Miami Co.	14,591	13,819	772	5.3%	5.6%	3.5%
Montgomery Co.	18,594	17,928	666	3.6%	3.8%	2.9%
Tippecanoe Co.	97,686	93,307	4,379	4.5%	4.8%	2.7%
Tipton Co.	8,755	8,453	302	3.4%	3.7%	2.1%
Warren Co.	4,010	3,873	137	3.4%	3.7%	2.8%
White Co.	12,891	12,428	463	3.6%	3.7%	2.4%
Attica	1,447	1,394	53	3.7%	5.2%	3.5%
Crawfordsville	7,266	6,939	327	4.5%	4.9%	3.2%
Delphi	1,308	1,254	54	4.1%	5.2%	3.0%
Fowler	1,123	1,078	45	4.0%	3.5%	3.4%
Frankfort	7,957	7,582	375	4.7%	4.8%	2.7%
Kokomo	25,208	23,581	1,627	6.5%	7.0%	3.5%
Lafayette	39,124	36,654	2,470	6.3%	6.6%	2.5%
Logansport	7,417	7,023	394	5.3%	5.4%	3.4%
Monticello	2,546	2,464	82	3.2%	3.6%	2.6%
Peru	4,357	4,083	274	6.3%	6.9%	4.4%
Tipton	2,673	2,560	113	4.2%	4.7%	2.9%
West Lafayette	21,925	21,398	527	2.4%	2.7%	2.5%
Williamsport	815	780	35	4.3%	5.5%	3.0%

Unemployment Rates by State (seasonally adjusted): November 2020

- U.S. - 6.7%
- Illinois - 6.9%
- Indiana - 5%
- Kentucky - 5.6%
- Michigan - 6.9%
- Ohio - 5.7%

Source: U.S. Department of Labor, Bureau of Labor Statistics

Unemployment Rank by County (of 92 counties): November 2020

- #8 - Howard (5.6%)
- #12 - Miami (5.3%)
- #30 - Tippecanoe (4.5%)
- #31 - Cass (4.4%)
- #51 - Clinton (4%)
- #66 - Fountain (3.8%)
- #70 - Carroll (3.7%)
- #73 - Benton (3.6%)
- #76 - Montgomery (3.6%)
- #78 - White (3.6%)
- #84 - Tipton (3.4%)
- #85 - Warren (3.4%)

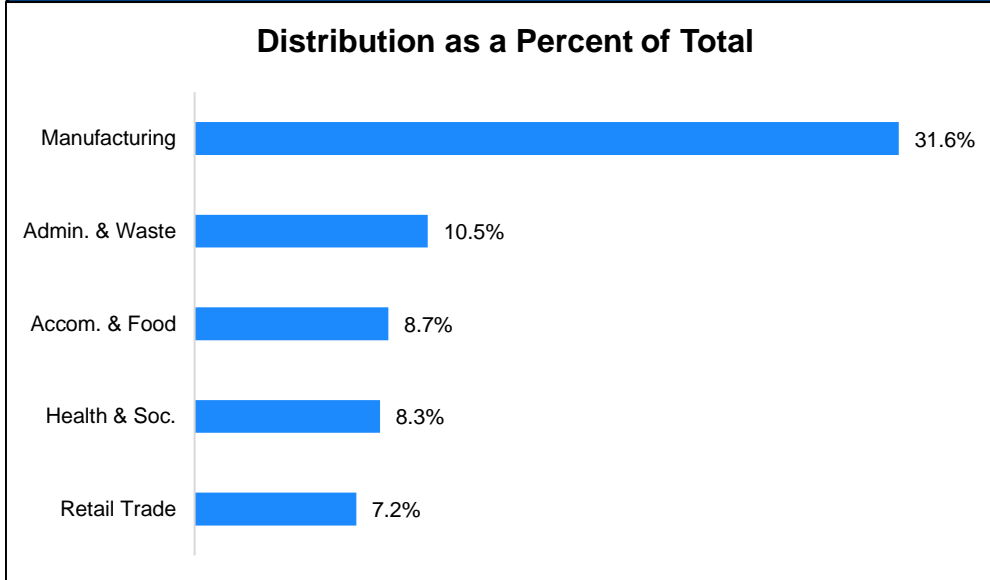
Source: Indiana Department of Workforce Development, Research and Development, Local Area Unemployment Statistics

Source: Indiana Department of Workforce Development, Research & Analysis, Local Area Unemployment Statistics | Unemployment Statistics Released: 12/20 | Notes: The data displayed are presented as estimates only. The most recent month's data are always preliminary and are revised when the next month's data are released.

Consumer Price Index (CPI-U Change), Unadjusted Percent Change to November 2020 from				
CPI Item	Nov-19	Oct-20	Nov-19	Oct-20
	U.S. City		Midwest Region*	
All Items	1.2%	-0.1%	1.0%	-0.2%
Food & Beverages	3.7%	-0.2%	2.7%	-0.4%
Housing	2.0%	0.1%	2.2%	0.2%
Apparel	-5.2%	-2.2%	-6.4%	-3.1%
Transportation	-3.3%	-0.1%	-2.7%	-0.6%
Medical Care	2.4%	-0.2%	2.3%	-0.2%
Recreation	1.3%	0.4%	1.1%	0.4%
Education & Communication	1.9%	0.0%	1.4%	-0.5%
Other Goods & Services	1.7%	0.1%	1.0%	0.3%

*Midwest region = Midwest Urban Average. Midwest Region includes Illinois, Indiana, Iowa, Kansas, Michigan, Minnesota, Missouri, Nebraska, North Dakota, Ohio, South Dakota and Wisconsin | Source: U.S. Bureau of Labor Statistics

Percentage of Unemployment Claims for Top 5 Region 4 Industries November 2020



Source: Indiana Department of Workforce Development, Research and Analysis

WARN Notices

WARN Notices for Region 4 for November 2020				
Company	City	County	# of workers affected	Notice Date

There are no WARN Notices for November 2020 for Region 4.

Source: Indiana Department of Workforce Development, WARN Notices | For information on WARN Act requirements, you may go to the U.S. Department of Labor Employment Training Administration Fact Sheet:

<https://www.doleta.gov/programs/factsht/warn.htm>

Unemployment Claims: November 2020

Region 4

Initial Claims

11/07/20 - 1,079(D)
 11/14/20 - 1,169(D)
 11/21/20 - 1,508
 11/28/20 - 1,548(D)

Continued Claims

11/07/20 - 4,385
 11/14/20 - 4,115
 11/21/20 - 3,669
 11/28/20 - 3,598

Total Claims

11/07/20 - 5,464
 11/14/20 - 5,284
 11/21/20 - 5,177
 11/28/20 - 5,146

State of Indiana

Initial Claims

11/07/20 - 14,111
 11/14/20 - 15,422
 11/21/20 - 18,829
 11/28/20 - 20,575

Continued Claims

11/07/20 - 81,938
 11/14/20 - 84,966
 11/21/20 - 78,674
 11/28/20 - 84,790

Total Claims

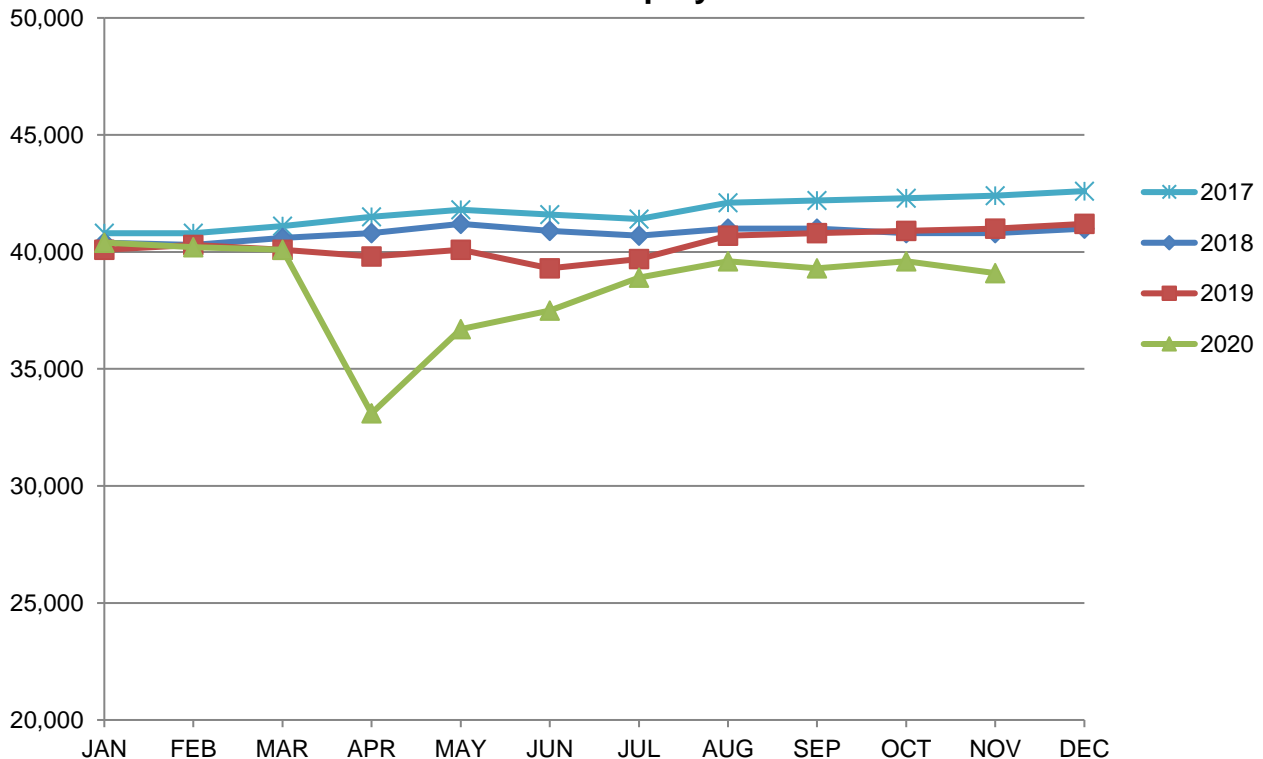
11/07/20 - 96,049
 11/14/20 - 100,388
 11/21/20 - 97,503
 11/28/20 - 105,365

(D) indicates item is affected by non-disclosure issues relating to industry or ownership status | Source: Indiana Department of Workforce Development, Research and Development

Kokomo MSA							
Wage and Salaried Employment	November 2020			# Change	% Change	# Change	% Change
Industry	Nov-20	Oct-20	Nov-19	Oct-20 to Nov-20	Nov-19 to Nov-20		
Total Nonfarm	39,100	39,600	41,000	-500	-1.3%	-1,900	-4.6%
Total Private	34,700	35,200	35,900	-500	-1.4%	-1,200	-3.3%
Goods Producing	13,400	13,400	12,900	0	0.0%	500	3.9%
Service-Providing	25,700	26,200	28,100	-500	-1.9%	-2,400	-8.5%
Private Service Providing	21,300	21,800	23,000	-500	-2.3%	-1,700	-7.4%
Mining, Logging and Construction	1,300	1,300	1,200	0	0.0%	100	8.3%
Manufacturing	12,100	12,100	11,700	0	0.0%	400	3.4%
Trade, Transportation, and Utilities	6,400	6,200	6,400	200	3.2%	0	0.0%
Wholesale Trade	900	900	900	0	0.0%	0	0.0%
Retail Trade	4,600	4,400	4,700	200	4.6%	-100	-2.1%
Transportation, Warehousing, and Utilities	900	900	800	0	0.0%	100	12.5%
Information	200	200	200	0	0.0%	0	0.0%
Financial Activities	1,200	1,100	1,200	100	9.1%	0	0.0%
Leisure and Hospitality	3,900	4,100	4,300	-200	-4.9%	-400	-9.3%
Other Services	1,600	1,600	1,900	0	0.0%	-300	-15.8%
Government	4,400	4,400	5,100	0	0.0%	-700	-13.7%
Local Government	3,100	3,100	3,500	0	0.0%	-400	-11.4%
Local Government Educational Services	1,800	1,800	2,200	0	0.0%	-400	-18.2%
Local Government excluding Educational Services	1,300	1,300	1,300	0	0.0%	0	0.0%

Source: Indiana Dept of Workforce Development, Research and Analysis, Current Employment Statistics

Kokomo MSA Employment Trends

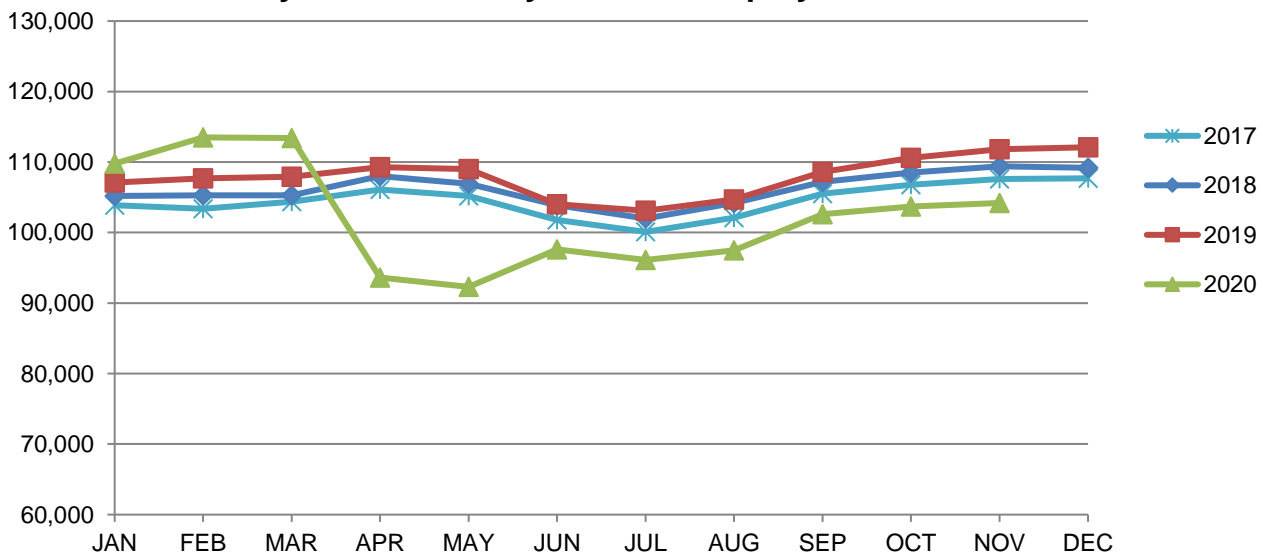


Source: Indiana Department of Workforce Development, Research & Analysis, Current Employment Statistics | Note: Historical data for the most recent 4 years (both seasonally adjusted and not seasonally adjusted) are revised near the beginning of each calendar year, prior to the release of January estimates for statewide data.

Lafayette-West Lafayette MSA							
Wage and Salaried Employment	November 2020			# Change	% Change	# Change	% Change
Industry	Nov-20	Oct-20	Nov-19	Oct-20 to Nov-20		Nov-19 to Nov-20	
Total Nonfarm	104,200	103,700	111,800	500	0.5%	-7,600	-6.8%
Total Private	77,000	76,600	79,800	400	0.5%	-2,800	-3.5%
Goods Producing	22,200	22,200	23,900	0	0.0%	-1,700	-7.1%
Service Providing	82,000	81,500	87,900	500	0.6%	-5,900	-6.7%
Private Service Providing	54,800	54,400	55,900	400	0.7%	-1,100	-2.0%
Mining, Logging and Construction	3,800	3,900	3,800	-100	-2.6%	0	0.0%
Manufacturing	18,400	18,300	20,100	100	0.6%	-1,700	-8.5%
Durable Goods	14,400	14,400	15,200	0	0.0%	-800	-5.3%
Trade, Transportation and Utilities	15,000	14,500	15,000	500	3.5%	0	0.0%
Wholesale Trade	2,200	2,200	2,400	0	0.0%	-200	-8.3%
Retail Trade	10,000	9,600	9,800	400	4.2%	200	2.0%
Transportation, Warehousing and Utilities	2,800	2,700	2,800	100	3.7%	0	0.0%
Information	700	700	800	0	0.0%	-100	-12.5%
Financial Activities	3,300	3,300	3,400	0	0.0%	-100	-2.9%
Professional and Business Services	8,600	8,500	8,000	100	1.2%	600	7.5%
Education and Health Services	13,300	13,200	13,400	100	0.8%	-100	-0.8%
Leisure and Hospitality	9,100	9,400	10,200	-300	-3.2%	-1,100	-10.8%
Accommodation and Food Services	7,900	8,000	9,600	-100	-1.3%	-1,700	-17.7%
Other Services	4,800	4,800	5,100	0	0.0%	-300	-5.9%
Total Government	27,200	27,100	32,000	100	0.4%	-4,800	-15.0%
Federal Government	500	600	500	-100	-16.7%	0	0.0%
State Government	20,400	20,200	24,400	200	1.0%	-4,000	-16.4%
Local Government	6,300	6,300	7,100	0	0.0%	-800	-11.3%
Local Government Educational Services	4,100	4,100	4,300	0	0.0%	-200	-4.7%

Source: Indiana Dept of Workforce Development, Research and Analysis, Current Employment Statistics

Lafayette-West Lafayette MSA Employment Trends



Source: Indiana Department of Workforce Development, Research & Analysis, Current Employment Statistics | Note: Historical data for the most recent 4 years (both seasonally adjusted and not seasonally adjusted) are revised near the beginning of each calendar year, prior to the release of January estimates for statewide data.

Frequently Listed Jobs	
Top 20 job listings by number of openings in Region 4 in the past month	
Rank	Occupations
1	Customer Service Representatives
2	Production Workers, All Other
3	Engineers, All Other
4	Helpers--Production Workers
5	Registered Nurses
6	Demonstrators and Product Promoters
7	Heavy and Tractor-Trailer Truck Drivers
8	Computer Network Support Specialists
9	Healthcare Practitioners and Technical Workers, All Other
10	Combined Food Preparation and Serving Workers, Including Fast Food
11	First-Line Supervisors of Production and Operating Workers
12	Financial Managers, Branch or Department
13	Healthcare Support Workers, All Other
14	Retail Salespersons
15	Home Health Aides
16	Tellers
17	Counter Attendants, Cafeteria, Food Concession, and Coffee Shop
18	Laborers and Freight, Stock, and Material Movers, Hand
19	Maintenance Workers, Machinery
20	Licensed Practical and Licensed Vocational Nurses

Source: Indiana Workforce Development, Indiana Career Connect

Applicant Pool	
Top 20 occupations desired by applicants on their resumes in the past 12 months	
Occupations	# of applicants
Production Workers, All Other	6391
Assemblers and Fabricators, All Other	5226
Helpers--Production Workers	3238
Laborers and Freight, Stock, and Material Movers, Hand	2353
Cashiers	1772
Customer Service Representatives	1298
Managers, All Other	1054
Industrial Truck and Tractor Operators	1031
Extraction Workers, All Other	1026
Office Clerks, General	1011
Office and Administrative Support Workers, All Other	1009
Stock Clerks and Order Fillers	1008
Team Assemblers	966
First-Line Supervisors of Production and Operating Workers	925
Welders, Cutters, Solderers, and Brazers	893
Electrical and Electronic Equipment Assemblers	881
Inspectors, Testers, Sorters, Samplers, and Weighers	850
Retail Salespersons	841
Nursing Assistants	799
Combined Food Preparation and Serving Workers, Including Fast Food	784

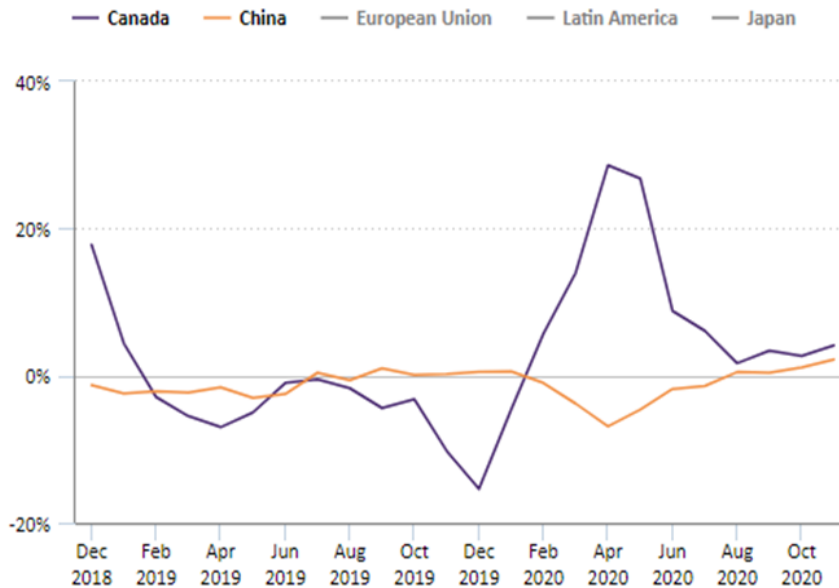
Source: Indiana Workforce Development, Indiana Career Connect

U.S. terms of trade increased with Canada and China for the year ended November 2020

DECEMBER 22, 2020

The U.S terms of trade with Canada increased 4.1 percent, for the year ending in November 2020. Terms of trade with China increased 2.2 percent, and terms of trade decreased with the European Union (-3.0) and Latin America (-3.2) during the same period. The U.S terms of trade with Japan were essentially unchanged for the year ended in November 2020.

12-month percent changes in the U.S terms of trade index, with selected countries and groupings, December 2018 to November 2020



U.S terms of trade with Canada increased because of a 0.1 percent increase in export prices to Canada and a 3.8 percent decrease for import prices from Canada.

Terms of trade with the European Union declined because of a 1.5 percent decrease in export prices to the European Union and a 1.5 percent increase in import prices from the European Union.

These data are from the [International Price](#) program. Terms of trade indexes are based on country, region, or grouping and measure the change in the purchasing power of exports relative to imports.

Bureau of Labor Statistics, U.S. Department of Labor, *The Economics Daily*, U.S. terms of trade increased with Canada and China for the year ended November 2020 at <https://www.bls.gov/opub/ted/2020/u-s-terms-of-trade-increased-with-canada-and-china-for-the-year-ended-november-2020.htm>

