

LABOR MARKET REVIEW



September 2019 Labor Market Review

Reported by: Cassie Janes

Regional Workforce Analyst
[Email Cassie](#)
cjanes@dwd.in.gov

Tel: 765-454-4760

LABOR MARKET REVIEW

Economic Growth Region 4

Statistical Data Report for September 2019, Released November 2019

State Employment and Unemployment

Unemployment rates were lower in August in 5 states, higher in 3 states, and stable in 42 states and the District of Columbia, the U.S. Bureau of Labor Statistics reported. Five states had jobless rate decreases from a year earlier, 2 states had increases, and 43 states and the District had little or no change. The national unemployment rate, 3.7 percent, was unchanged over the month and little changed from August 2018.



Economic Growth Region (EGR) 4

Benton, Carroll, Cass, Clinton, Fountain, Howard, Miami, Montgomery, Tippecanoe, Tipton, Warren and White Counties.

September 2019 Labor Force Estimates (not seasonally adjusted)						
Area	Labor Force	Employed	Unemployed	Sep-19	Aug-19	Sep-18
U.S.	163,943,000	158,478,000	5,465,000	3.3%	3.8%	3.6%
IN	3,368,659	3,273,243	95,416	2.8%	3.2%	3.1%
EGR 4	249,840	243,224	6,616	2.6%	3.1%	2.8%
Kokomo MSA	37,549	36,356	1,193	3.2%	3.4%	3.3%
Lafayette MSA	108,185	105,465	2,720	2.5%	3.2%	2.7%
Benton Co.	4,314	4,203	111	2.6%	3.1%	2.8%
Carroll Co.	9,756	9,509	247	2.5%	3.0%	2.8%
Cass Co.	17,652	17,170	482	2.7%	3.1%	3.0%
Clinton Co.	17,157	16,776	381	2.2%	2.6%	2.4%
Fountain Co.	7,904	7,681	223	2.8%	3.3%	3.3%
Howard Co.	37,549	36,356	1,193	3.2%	3.4%	3.3%
Miami Co.	15,781	15,277	504	3.2%	3.5%	3.3%
Montgomery Co.	18,734	18,230	504	2.7%	3.1%	2.6%
Tippecanoe Co.	94,115	91,753	2,362	2.5%	3.2%	2.7%
Tipton Co.	9,438	9,246	192	2.0%	2.5%	2.2%
Warren Co.	4,072	3,959	113	2.8%	3.2%	3.2%
White Co.	13,368	13,064	304	2.3%	2.5%	2.6%
Attica	1,456	1,425	31	2.1%	3.2%	3.8%
Crawfordsville	7,274	7,050	224	3.1%	3.6%	2.9%
Delphi	1,263	1,226	37	2.9%	3.4%	3.6%
Fowler	1,076	1,045	31	2.9%	3.8%	2.7%
Frankfort	8,080	7,901	179	2.2%	2.5%	2.0%
Kokomo	25,800	24,908	892	3.5%	3.7%	3.6%
Lafayette	37,501	36,622	879	2.3%	2.7%	2.4%
Logansport	7,807	7,570	237	3.0%	3.4%	3.1%
Monticello	2,648	2,592	56	2.1%	2.6%	2.4%
Peru	4,729	4,529	200	4.2%	4.3%	3.9%
Tipton	2,874	2,800	74	2.6%	2.9%	2.7%
West Lafayette	20,920	20,413	507	2.4%	3.1%	2.5%
Williamsport	826	799	27	3.3%	3.0%	3.3%

Source: Indiana Department of Workforce Development, Research & Analysis, Local Area Unemployment Statistics | Unemployment Statistics Released:10/19 | Notes: The data displayed are presented as estimates only. The most recent month's data are always preliminary and are revised when the next month's data are released.

Unemployment Rates by State (seasonally adjusted): September 2019

U.S. - 3.5%

Illinois - 3.9%

Indiana - 3.2%

Kentucky - 4.4%

Michigan - 4.2%

Ohio - 4.2%

Source: U.S. Department of Labor, Bureau of Labor Statistics

Unemployment Rank by County (of 92 counties): September 2019

#14 - Howard (3.2%)

#15 - Miami (3.2%)

#33 - Fountain (2.8%)

#39 - Warren (2.8%)

#42 - Cass (2.7%)

#47 - Montgomery (2.7%)

#52 - Benton (2.6%)

#57 - Carroll (2.5%)

#65 - Tippecanoe (2.5%)

#79 - White (2.3%)

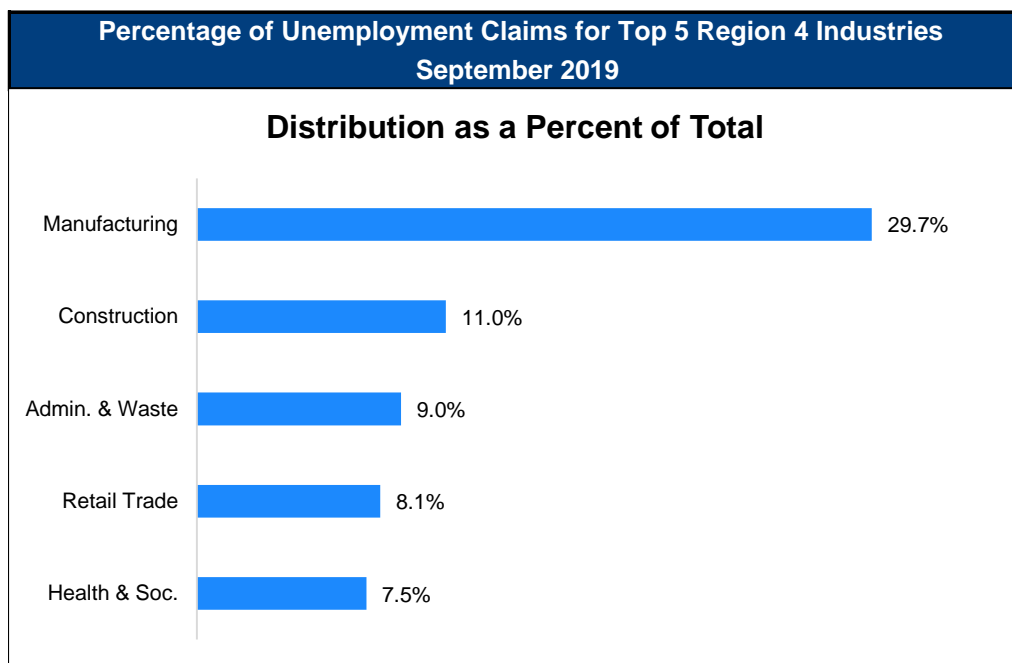
#81 - Clinton (2.2%)

#91 - Tipton (2%)

Source: Indiana Department of Workforce Development, Research and Development, Local Area Unemployment Statistics

Consumer Price Index (CPI-U Change), Unadjusted Percent Change to September 2019 from				
CPI Item	Sep-18	Aug-19	Sep-18	Aug-19
	U.S. City		Midwest Region*	
All Items	1.7%	0.1%	1.4%	0.0%
Food & Beverages	1.8%	0.2%	1.6%	0.2%
Housing	3.0%	0.2%	2.6%	0.2%
Apparel	-0.3%	2.7%	0.8%	3.0%
Transportation	-1.4%	-0.8%	-1.4%	-1.1%
Medical Care	3.5%	0.1%	3.0%	0.0%
Recreation	1.0%	-0.1%	0.4%	-0.1%
Education & Communication	0.4%	0.2%	-0.2%	0.3%
Other Goods & Services	2.2%	0.0%	2.6%	0.4%

*Midwest region = Midwest Urban Average. Midwest Region includes Illinois, Indiana, Iowa, Kansas, Michigan, Minnesota, Missouri, Nebraska, North Dakota, Ohio, South Dakota and Wisconsin | Source: U.S. Bureau of Labor Statistics



Source: Indiana Department of Workforce Development, Research and Analysis

WARN Notices

WARN Notices for Region 4 for September 2019				
Company	City	County	# of workers affected	Notice Date

There are no WARN Notices for September 2019 for Region 4.

Source: Indiana Department of Workforce Development, WARN Notices | For information on WARN Act requirements, you may go to the U.S. Department of Labor Employment Training Administration Fact Sheet:

<https://www.doleta.gov/programs/factsheet/warn.htm>

Unemployment Claims: September 2019

Region 4

Initial Claims

09/07/19 - 92(D)

09/14/19 - 80(D)

09/21/19 - 72(D)

09/28/19 - 86(D)

Continued Claims

09/07/19 - 635

09/14/19 - 625

09/21/19 - 651

09/28/19 - 645

Total Claims

09/07/19 - 727

09/14/19 - 705

09/21/19 - 723

09/28/19 - 731

State of Indiana

Initial Claims

09/07/19 - 1,733

09/14/19 - 1,736

09/21/19 - 2,422

09/28/19 - 2,022

Continued Claims

09/07/19 - 10,927

09/14/19 - 10,715

09/21/19 - 10,854

09/28/19 - 11,414

Total Claims

09/07/19 - 12,660

09/14/19 - 12,451

09/21/19 - 13,276

09/28/19 - 13,436

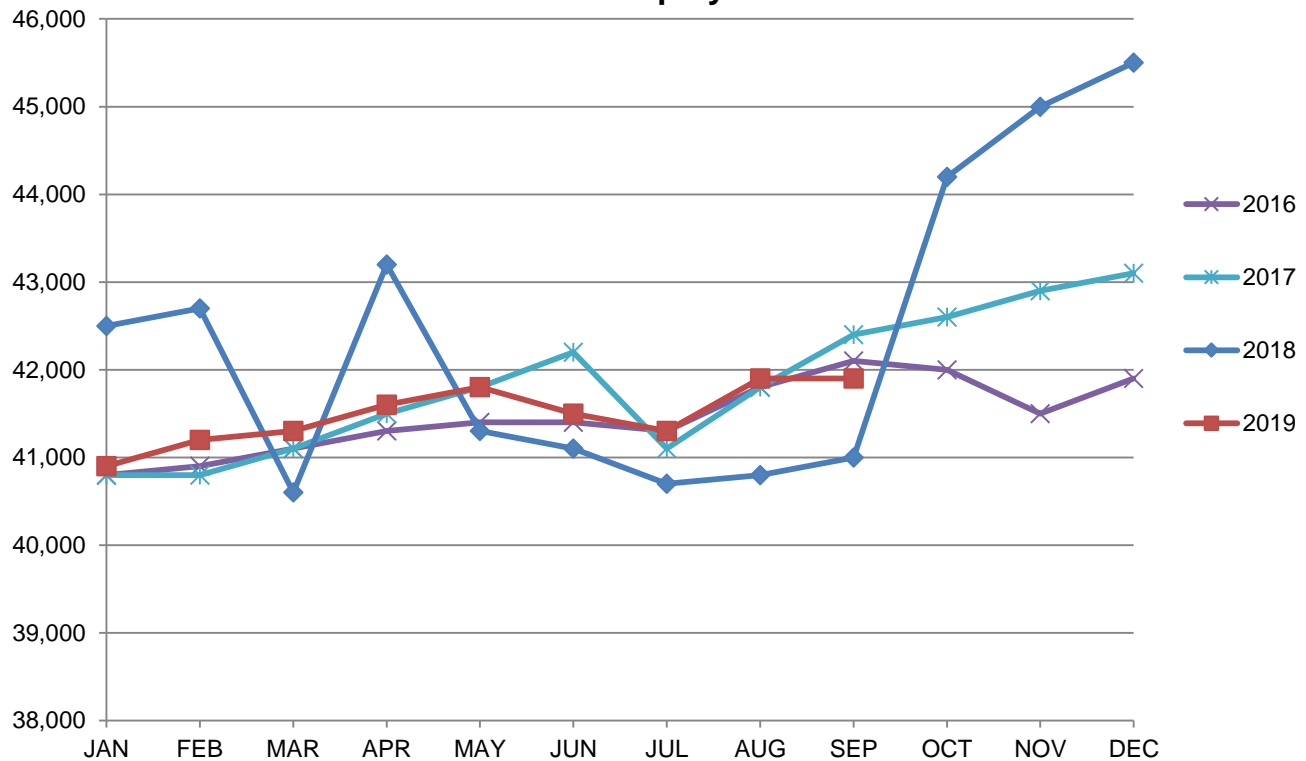
(D) indicates item is affected by non-disclosure issues relating to industry or ownership status |

Source: Indiana Department of Workforce Development, Research and Development

Kokomo MSA						
Wage and Salaried Employment	September 2019			# Change	% Change	# Change % Change
Industry	Sep-19	Aug-19	Sep-18	Aug-19 to Sep-19	Sep-18 to Sep-19	
Total Nonfarm	41,900	41,900	41,000	0	0.0%	900 2.2%
Total Private	37,000	37,100	35,900	-100	-0.3%	1,100 3.1%
Goods Producing	13,400	13,500	12,900	-100	-0.7%	500 3.9%
Service-Providing	28,500	28,400	28,100	100	0.4%	400 1.4%
Private Service Providing	23,600	23,600	23,000	0	0.0%	600 2.6%
Mining, Logging and Construction	1,200	1,200	1,100	0	0.0%	100 9.1%
Manufacturing	12,200	12,300	11,800	-100	-0.8%	400 3.4%
Trade, Transportation, and Utilities	6,600	6,700	6,700	-100	-1.5%	-100 -1.5%
Wholesale Trade	900	1,000	1,000	-100	-10.0%	-100 -10.0%
Retail Trade	4,800	4,800	4,800	0	0.0%	0 0.0%
Transportation, Warehousing, and Utilities	900	900	900	0	0.0%	0 0.0%
Information	200	200	200	0	0.0%	0 0.0%
Financial Activities	1,200	1,200	1,200	0	0.0%	0 0.0%
Leisure and Hospitality	4,400	4,500	4,400	-100	-2.2%	0 0.0%
Other Services	1,900	1,900	1,900	0	0.0%	0 0.0%
Government	4,900	4,800	5,100	100	2.1%	-200 -3.9%
Local Government	3,500	3,400	3,600	100	2.9%	-100 -2.8%
Local Government Educational Services	2,200	2,100	2,200	100	4.8%	0 0.0%
Local Government excluding Educational Services	1,300	1,300	1,400	0	0.0%	-100 -7.1%

Source: Indiana Dept of Workforce Development, Research and Analysis, Current Employment Statistics

Kokomo MSA Employment Trends

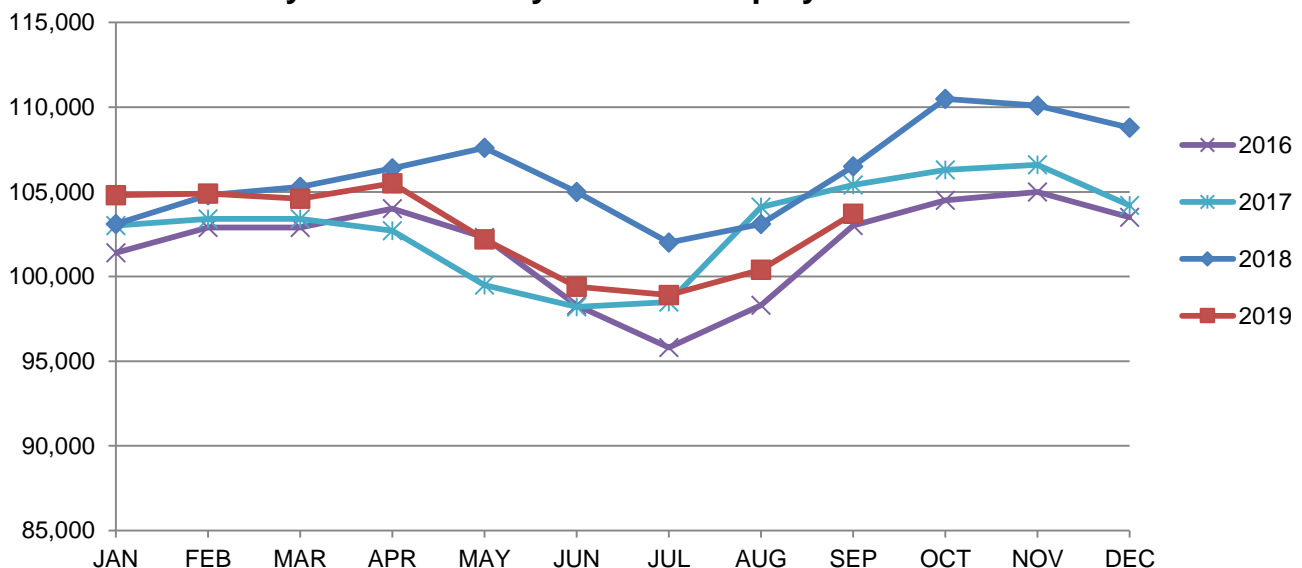


Source: Indiana Department of Workforce Development, Research & Analysis, Current Employment Statistics | Note: Historical data for the most recent 4 years (both seasonally adjusted and not seasonally adjusted) are revised near the beginning of each calendar year, prior to the release of January estimates for statewide data.

Lafayette-West Lafayette MSA							
Wage and Salaried Employment	September 2019			# Change	% Change	# Change	% Change
Industry	Sep-19	Aug-19	Sep-18	Aug-19 to Sep-19		Sep-18 to Sep-19	
Total Nonfarm	103,700	100,400	106,500	3,300	3.3%	-2,800	-2.6%
Total Private	78,200	78,200	77,500	0	0.0%	700	0.9%
Goods Producing	23,800	24,100	23,000	-300	-1.2%	800	3.5%
Service Providing	79,900	76,300	83,500	3,600	4.7%	-3,600	-4.3%
Private Service Providing	54,400	54,100	54,500	300	0.6%	-100	-0.2%
Mining, Logging and Construction	3,700	3,900	3,600	-200	-5.1%	100	2.8%
Manufacturing	20,100	20,200	19,400	-100	-0.5%	700	3.6%
Durable Goods	14,900	15,100	15,100	-200	-1.3%	-200	-1.3%
Trade, Transportation and Utilities	14,000	14,100	14,600	-100	-0.7%	-600	-4.1%
Wholesale Trade	2,600	2,600	2,500	0	0.0%	100	4.0%
Retail Trade	8,800	8,900	9,500	-100	-1.1%	-700	-7.4%
Transportation, Warehousing and Utilities	2,600	2,600	2,600	0	0.0%	0	0.0%
Information	700	700	700	0	0.0%	0	0.0%
Financial Activities	3,400	3,400	3,500	0	0.0%	-100	-2.9%
Professional and Business Services	7,800	7,700	8,100	100	1.3%	-300	-3.7%
Education and Health Services	13,000	13,000	12,600	0	0.0%	400	3.2%
Leisure and Hospitality	10,400	10,100	10,200	300	3.0%	200	2.0%
Accommodation and Food Services	9,100	9,100	9,500	0	0.0%	-400	-4.2%
Other Services	5,100	5,100	4,800	0	0.0%	300	6.3%
Total Government	25,500	22,200	29,000	3,300	14.9%	-3,500	-12.1%
Federal Government	500	500	500	0	0.0%	0	0.0%
State Government	17,900	14,700	21,300	3,200	21.8%	-3,400	-16.0%
Local Government	7,100	7,000	7,200	100	1.4%	-100	-1.4%
Local Government Educational Services	4,400	4,100	4,500	300	7.3%	-100	-2.2%

Source: Indiana Dept of Workforce Development, Research and Analysis, Current Employment Statistics

Lafayette-West Lafayette MSA Employment Trends



Source: Indiana Department of Workforce Development, Research & Analysis, Current Employment Statistics | Note: Historical data for the most recent 4 years (both seasonally adjusted and not seasonally adjusted) are revised near the beginning of each calendar year, prior to the release of January estimates for statewide data.

Frequently Listed Jobs	
Top 20 job listings by number of openings in Region 4 in the past month	
Rank	Occupations
1	Production Workers, All Other
2	Engineers, All Other
3	Registered Nurses
4	Quality Control Analysts
5	First-Line Supervisors of Production and Operating Workers
6	Multiple Machine Tool Setters, Operators, and Tenders, Metal and Plastic
7	Combined Food Preparation and Serving Workers, Including Fast Food
8	Counter Attendants, Cafeteria, Food Concession, and Coffee Shop
9	Executive Secretaries and Executive Administrative Assistants
10	Janitors and Cleaners, Except Maids and Housekeeping Cleaners
11	Retail Salespersons
12	Slaughterers and Meat Packers
13	Tellers
14	Heavy and Tractor-Trailer Truck Drivers
15	Industrial Machinery Mechanics
16	Security Guards
17	Building Cleaning Workers, All Other
18	Managers, All Other
19	Healthcare Practitioners and Technical Workers, All Other
20	Automotive Master Mechanics

Source: Indiana Workforce Development, Indiana Career Connect

Applicant Pool	
Top 20 occupations desired by applicants on their resumes in the past 12 months	
Occupations	# of applicants
Production Workers, All Other	975
Assemblers and Fabricators, All Other	727
Helpers--Production Workers	457
Laborers and Freight, Stock, and Material Movers, Hand	395
Cashiers	283
Customer Service Representatives	265
Team Assemblers	221
Office Clerks, General	210
Office and Administrative Support Workers, All Other	184
Managers, All Other	176
Extraction Workers, All Other	172
Stock Clerks and Order Fillers	157
Retail Salespersons	148
Nursing Assistants	146
First-Line Supervisors of Production and Operating Workers	139
Welders, Cutters, Solderers, and Brazers	134
Industrial Truck and Tractor Operators	128
Combined Food Preparation and Serving Workers, Including Fast Food	123
Janitors and Cleaners, Except Maids and Housekeeping Cleaners	120
Engineering Technicians, Except Drafters, All Other	119

Source: Indiana Workforce Development, Indiana Career Connect

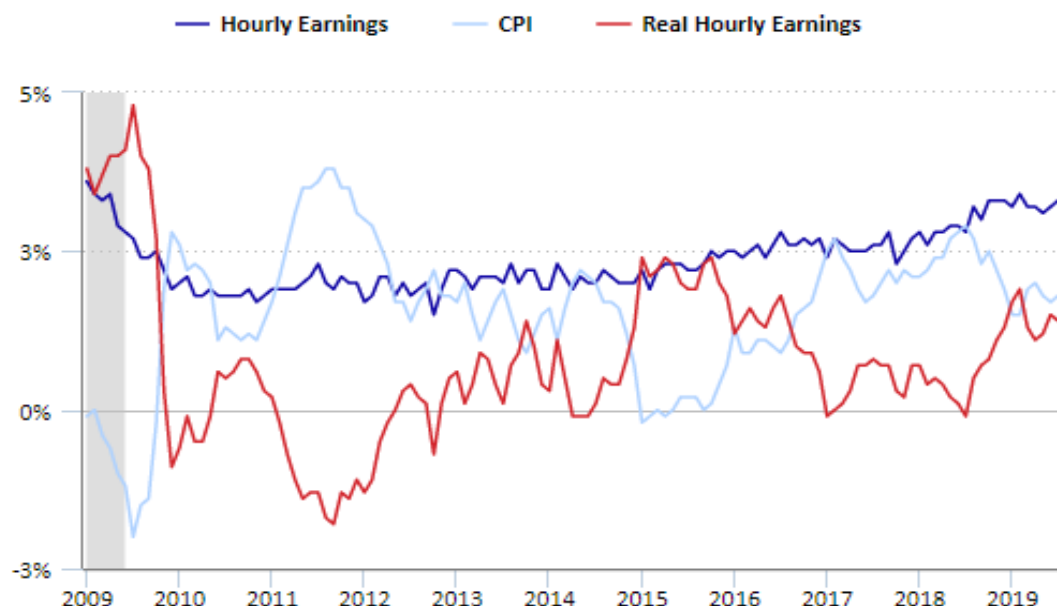
TED: The Economics Daily

Real average hourly earnings up 1.5 percent from August 2018 to August 2019

SEPTEMBER 18, 2019

Real average hourly earnings for all employees on private nonfarm payrolls increased 1.5 percent from August 2018 to August 2019. Before adjusting for the increase in consumer prices, average hourly earnings rose 3.2 percent from August 2018 to August 2019. The Consumer Price Index for All Urban Consumers rose 1.8 percent over this period.

12-month percent change in average hourly earnings and the Consumer Price Index for All Urban Consumers, January 2009 to August 2019



These data are from the [Current Employment Statistics](#) program and are seasonally adjusted. Data for the most recent 2 months are preliminary. To learn more, see "[Real Earnings — August 2019](#)." The [Consumer Price Index](#) is used to adjust earnings estimates for inflation.

Bureau of Labor Statistics, U.S. Department of Labor, *The Economics Daily*, Real average hourly earnings up 1.5 percent from August 2018 to August 2019 on the Internet at <https://www.bls.gov/opub/ted/2019/real-average-hourly-earnings-up-1-point-5-percent-from-august-2018-to-august-2019.htm>

WORKFORCE
DEVELOPMENT

**Please contact the DWD
Research and Analysis
Regional Labor Analyst
listed below:**

Indiana Department of
Workforce Development

Kokomo, IN 46901

cjanes@dwd.in.gov

