

LABOR MARKET REVIEW



June 2019 Labor Market Review

Reported by: **Cassie Janes**

Regional Workforce Analyst
[Email Cassie](#)
cjanes@dwd.in.gov

Tel: 765-454-4760

LABOR MARKET REVIEW

Economic Growth Region 4

Statistical Data Report for June 2019, Released August 2019

State Employment and Unemployment

Unemployment rates were lower in June in 6 states and stable in 44 states and the District of Columbia, the U.S. Bureau of Labor Statistics reported. Three states had jobless rate decreases from a year earlier and 47 states and the District had little or no change. The national unemployment rate, 3.7 percent, was little changed from May but was 0.3 percentage point lower than in June 2018.



Economic Growth Region (EGR) 4

Benton, Carroll, Cass, Clinton, Fountain, Howard, Miami, Montgomery, Tippecanoe, Tipton, Warren and White Counties.

June 2019 Labor Force Estimates (not seasonally adjusted)						
Area	Labor Force	Employed	Unemployed	Jun-19	May-19	Jun-18
U.S.	164,120,000	157,828,000	6,292,000	3.8%	3.4%	4.2%
IN	3,412,031	3,298,895	113,136	3.3%	2.9%	3.7%
EGR 4	250,074	241,998	8,076	3.2%	2.8%	3.6%
Kokomo MSA	37,752	36,395	1,357	3.6%	3.2%	4.3%
Lafayette MSA	106,069	102,621	3,448	3.3%	2.8%	3.6%
Benton Co.	4,348	4,199	149	3.4%	2.9%	3.6%
Carroll Co.	9,702	9,404	298	3.1%	2.7%	3.5%
Cass Co.	18,391	17,795	596	3.2%	3.0%	3.8%
Clinton Co.	17,260	16,805	455	2.6%	2.4%	2.9%
Fountain Co.	8,051	7,777	274	3.4%	3.1%	4.0%
Howard Co.	37,752	36,395	1,357	3.6%	3.2%	4.3%
Miami Co.	15,942	15,345	597	3.7%	3.2%	4.3%
Montgomery Co.	19,132	18,526	606	3.2%	2.7%	3.3%
Tippecanoe Co.	92,019	89,018	3,001	3.3%	2.8%	3.6%
Tipton Co.	9,264	9,013	251	2.7%	2.4%	3.1%
Warren Co.	4,146	4,017	129	3.1%	2.7%	3.6%
White Co.	14,067	13,704	363	2.6%	2.3%	3.0%
Attica	1,497	1,443	54	3.6%	3.3%	4.9%
Crawfordsville	7,445	7,164	281	3.8%	3.3%	3.7%
Delphi	1,256	1,213	43	3.4%	2.9%	3.8%
Fowler	1,094	1,044	50	4.6%	4.0%	3.1%
Frankfort	8,114	7,915	199	2.5%	2.3%	2.8%
Kokomo	25,943	24,935	1,008	3.9%	3.4%	4.5%
Lafayette	36,571	35,530	1,041	2.8%	2.5%	3.3%
Logansport	8,119	7,846	273	3.4%	3.2%	3.7%
Monticello	2,806	2,719	87	3.1%	2.6%	3.0%
Peru	4,768	4,549	219	4.6%	3.7%	4.8%
Tipton	2,819	2,729	90	3.2%	2.8%	3.2%
West Lafayette	20,480	19,805	675	3.3%	2.8%	3.5%
Williamsport	832	810	22	2.6%	3.8%	4.8%

Source: Indiana Department of Workforce Development, Research & Analysis, Local Area Unemployment Statistics | Unemployment Statistics Released: 07/19 | Notes: The data displayed are presented as estimates only. The most recent month's data are always preliminary and are revised when the next month's data are released.

Unemployment Rates by State (seasonally adjusted): June 2019

U.S. - 3.7%

Illinois - 4.3%

Indiana - 3.5%

Kentucky - 4.1%

Michigan - 4.2%

Ohio - 4%

Source: U.S. Department of Labor, Bureau of Labor Statistics

Unemployment Rank by County (of 92 counties): June 2019

#16 - Miami (3.7%)

#21 - Howard (3.6%)

#29 - Benton (3.4%)

#32 - Fountain (3.4%)

#42 - Tippecanoe (3.3%)

#44 - Cass (3.2%)

#49 - Montgomery (3.2%)

#54 - Carroll (3.1%)

#59 - Warren (3.1%)

#83 - Tipton (2.7%)

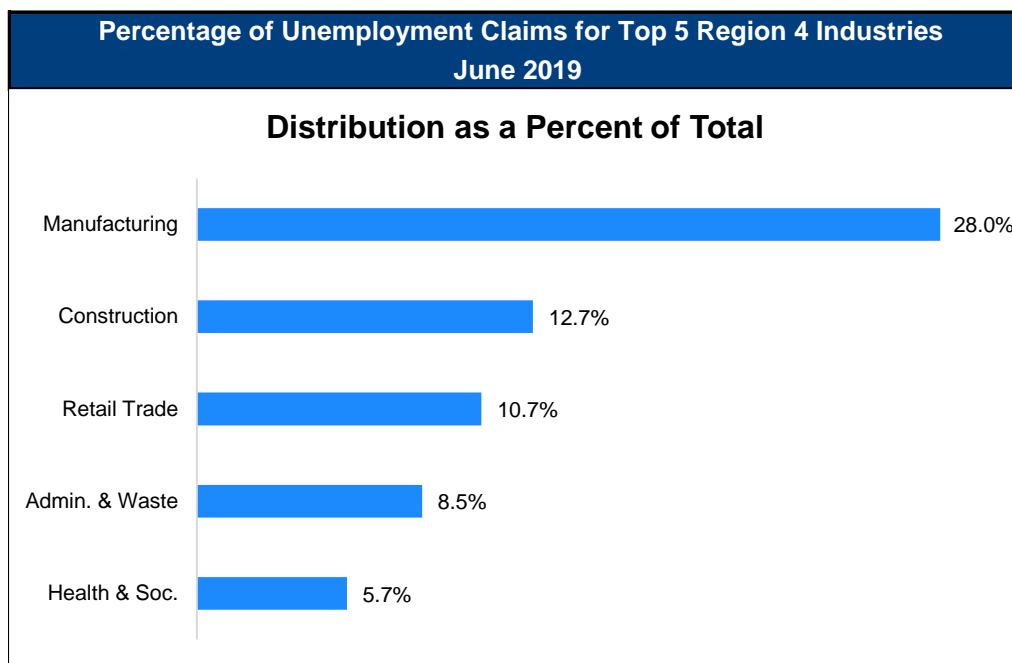
#85 - Clinton (2.6%)

#89 - White (2.6%)

Source: Indiana Department of Workforce Development, Research and Development, Local Area Unemployment Statistics

Consumer Price Index (CPI-U Change), Unadjusted Percent Change to June 2019 from				
CPI Item	Jun-18	May-19	Jun-18	May-19
	U.S. City		Midwest Region*	
All Items	1.6%	0.0%	1.2%	0.0%
Food & Beverages	1.9%	0.0%	1.5%	0.2%
Housing	3.0%	0.5%	2.6%	0.4%
Apparel	-1.3%	-0.5%	-2.5%	-0.7%
Transportation	-0.7%	-1.1%	-0.8%	-0.8%
Medical Care	2.0%	0.1%	2.0%	0.4%
Recreation	0.8%	-0.1%	-1.0%	-0.2%
Education & Communication	0.6%	0.1%	-0.2%	0.2%
Other Goods & Services	1.5%	-0.1%	1.9%	-0.4%

*Midwest region = Midwest Urban Average. Midwest Region includes Illinois, Indiana, Iowa, Kansas, Michigan, Minnesota, Missouri, Nebraska, North Dakota, Ohio, South Dakota and Wisconsin | Source: U.S. Bureau of Labor Statistics



Source: Indiana Department of Workforce Development, Research and Analysis

WARN Notices

WARN Notices for Region 4 for June 2019				
Company	City	County	# of workers affected	Notice Date

There are no WARN Notices for June 2019 for Region 4.

Source: Indiana Department of Workforce Development, WARN Notices | For information on WARN Act requirements, you may go to the U.S. Department of Labor Employment Training Administration Fact Sheet:

<https://www.doleta.gov/programs/factsheet/warn.htm>

Unemployment Claims: June 2019

Region 4

Initial Claims

06/01/19 - 96(D)

06/08/19 - 95(D)

06/15/19 - 82(D)

06/22/19 - 104(D)

06/29/19 - 92(D)

Continued Claims

06/01/19 - 669

06/08/19 - 649

06/15/19 - 654

06/22/19 - 669

06/29/19 - 631

Total Claims

06/01/19 - 765

06/08/19 - 744

06/15/19 - 736

06/22/19 - 773

06/29/19 - 723

State of Indiana

Initial Claims

06/01/19 - 1,847

06/08/19 - 2,530

06/15/19 - 1,843

06/22/19 - 1,687

06/29/19 - 1963

Continued Claims

06/01/19 - 11,792

06/08/19 - 11,269

06/15/19 - 11,263

06/22/19 - 11,033

06/29/19 - 10,500

Total Claims

06/01/19 - 13,639

06/08/19 - 13,799

06/15/19 - 13,106

06/22/19 - 12,720

06/29/19 - 12,463

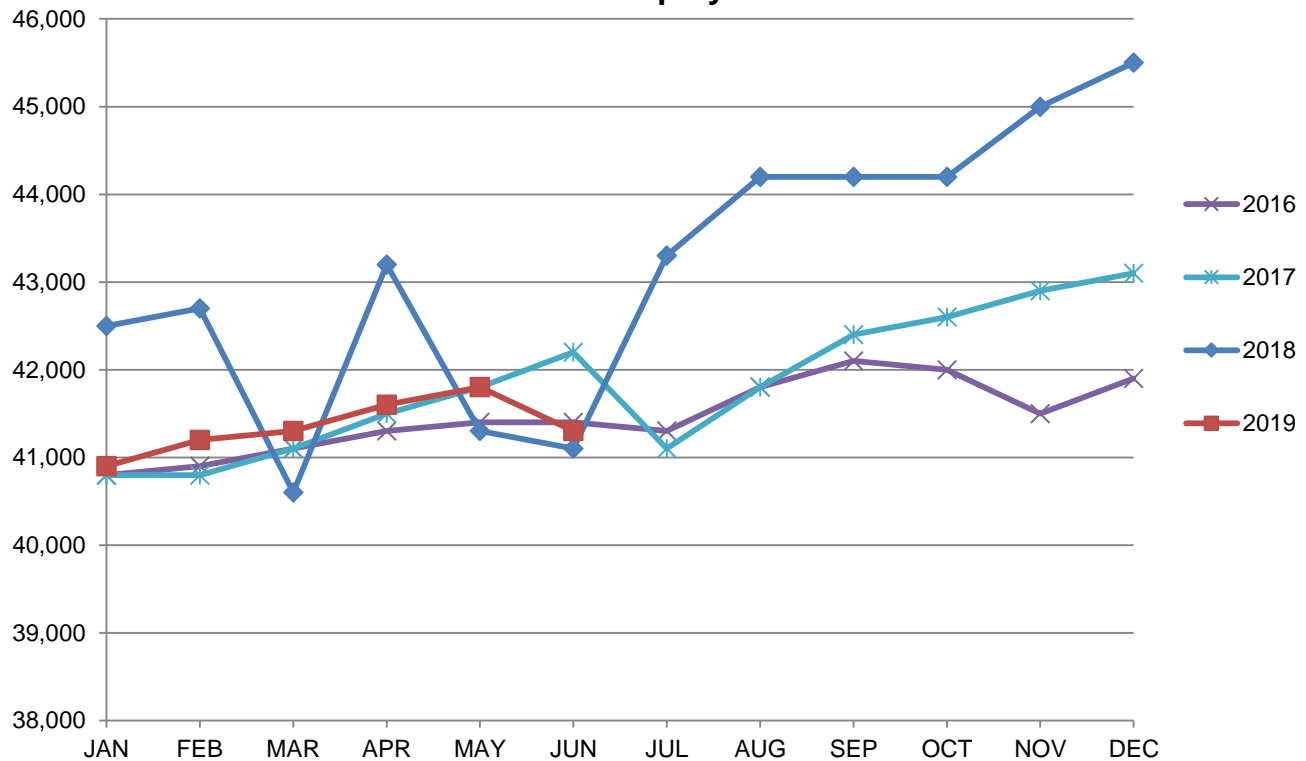
(D) indicates item is affected by non-disclosure issues relating to industry or ownership status |

Source: Indiana Department of Workforce Development, Research and Development

Kokomo MSA							
Wage and Salaried Employment	June 2019			# Change	% Change	# Change	% Change
Industry	Jun-19	May-19	Jun-18	May-19 to Jun-19		Jun-18 to Jun-19	
Total Nonfarm	41,300	41,800	41,100	-500	-1.2%	200	0.5%
Total Private	37,100	36,800	36,400	300	0.8%	700	1.9%
Goods Producing	13,400	13,300	13,000	100	0.8%	400	3.1%
Service-Providing	27,900	28,500	28,100	-600	-2.1%	-200	-0.7%
Private Service Providing	23,700	23,500	23,400	200	0.9%	300	1.3%
Mining, Logging and Construction	1,200	1,200	1,200	0	0.0%	0	0.0%
Manufacturing	12,200	12,100	11,800	100	0.8%	400	3.4%
Trade, Transportation, and Utilities	6,700	6,700	6,800	0	0.0%	-100	-1.5%
Wholesale Trade	1,000	1,000	1,000	0	0.0%	0	0.0%
Retail Trade	4,800	4,800	4,900	0	0.0%	-100	-2.0%
Transportation, Warehousing, and Utilities	900	900	900	0	0.0%	0	0.0%
Information	200	200	200	0	0.0%	0	0.0%
Financial Activities	1,200	1,100	1,200	100	9.1%	0	0.0%
Leisure and Hospitality	4,600	4,500	4,600	100	2.2%	0	0.0%
Other Services	1,900	1,900	1,900	0	0.0%	0	0.0%
Government	4,200	5,000	4,700	-800	-16.0%	-500	-10.6%
Local Government	2,900	3,600	3,300	-700	-19.4%	-400	-12.1%
Local Government Educational Services	1,500	2,200	1,900	-700	-31.8%	-400	-21.1%
Local Government excluding Educational Services	1,400	1,400	1,400	0	0.0%	0	0.0%

Source: Indiana Dept of Workforce Development, Research and Analysis, Current Employment Statistics

Kokomo MSA Employment Trends

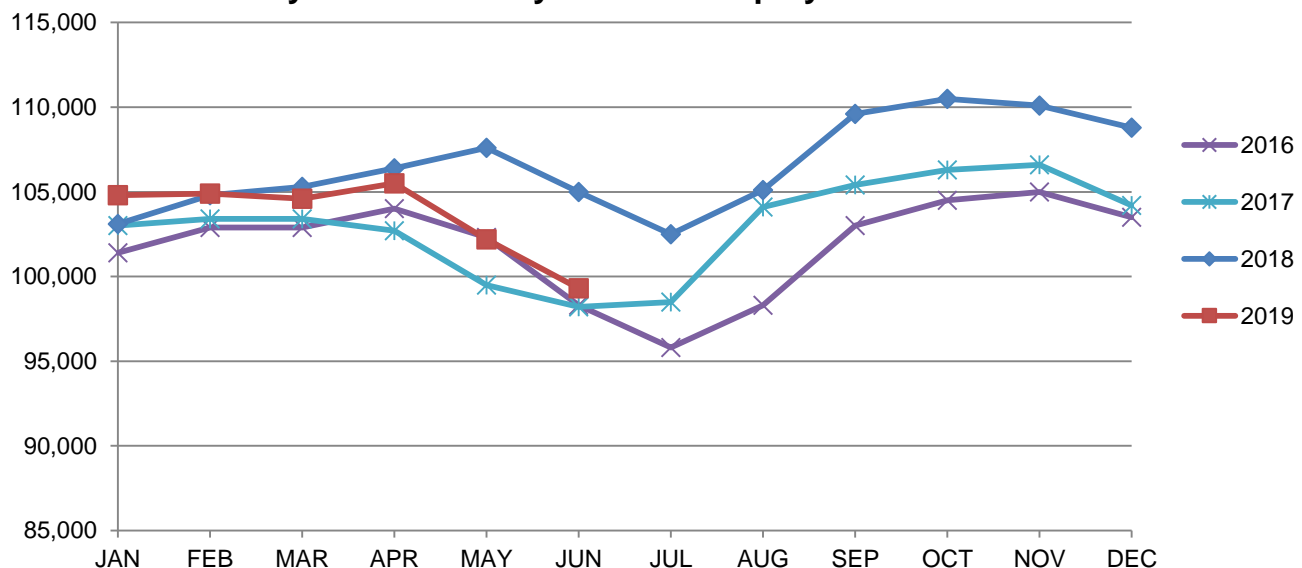


Source: Indiana Department of Workforce Development, Research & Analysis, Current Employment Statistics | Note: Historical data for the most recent 4 years (both seasonally adjusted and not seasonally adjusted) are revised near the beginning of each calendar year, prior to the release of January estimates for statewide data.

Lafayette-West Lafayette MSA							
Wage and Salaried Employment	June 2019			# Change	% Change	# Change	% Change
Industry	Jun-19	May-19	Jun-18	May-19 to Jun-19		Jun-18 to Jun-19	
Total Nonfarm	99,300	102,200	105,000	-2,900	-2.8%	-5,700	-5.4%
Total Private	78,300	78,300	77,700	0	0.0%	600	0.8%
Goods Producing	24,200	23,800	23,000	400	1.7%	1,200	5.2%
Service Providing	75,100	78,400	82,000	-3,300	-4.2%	-6,900	-8.4%
Private Service Providing	54,100	54,500	54,700	-400	-0.7%	-600	-1.1%
Mining, Logging and Construction	3,900	3,700	3,700	200	5.4%	200	5.4%
Manufacturing	20,300	20,100	19,300	200	1.0%	1,000	5.2%
Durable Goods	15,200	15,100	15,000	100	0.7%	200	1.3%
Trade, Transportation and Utilities	14,000	14,200	14,600	-200	-1.4%	-600	-4.1%
Wholesale Trade	2,600	2,600	2,400	0	0.0%	200	8.3%
Retail Trade	8,800	9,000	9,600	-200	-2.2%	-800	-8.3%
Transportation, Warehousing and Utilities	2,600	2,600	2,600	0	0.0%	0	0.0%
Information	800	800	800	0	0.0%	0	0.0%
Financial Activities	3,400	3,400	3,500	0	0.0%	-100	-2.9%
Professional and Business Services	7,700	7,800	8,100	-100	-1.3%	-400	-4.9%
Education and Health Services	13,100	13,000	12,700	100	0.8%	400	3.2%
Leisure and Hospitality	10,100	10,400	10,200	-300	-2.9%	-100	-1.0%
Accommodation and Food Services	9,300	9,600	9,400	-300	-3.1%	-100	-1.1%
Other Services	5,000	4,900	4,800	100	2.0%	200	4.2%
Total Government	21,000	23,900	27,300	-2,900	-12.1%	-6,300	-23.1%
Federal Government	500	500	500	0	0.0%	0	0.0%
State Government	14,000	16,000	19,600	-2,000	-12.5%	-5,600	-28.6%
Local Government	6,500	7,400	7,200	-900	-12.2%	-700	-9.7%
Local Government Educational Services	3,700	4,600	4,300	-900	-19.6%	-600	-14.0%

Source: Indiana Dept of Workforce Development, Research and Analysis, Current Employment Statistics

Lafayette-West Lafayette MSA Employment Trends



Source: Indiana Department of Workforce Development, Research & Analysis, Current Employment Statistics | Note: Historical data for the most recent 4 years (both seasonally adjusted and not seasonally adjusted) are revised near the beginning of each calendar year, prior to the release of January estimates for statewide data.

Frequently Listed Jobs	
Top 20 job listings by number of openings in Region 4 in the past month	
Rank	Occupations
1	Production Workers, All Other
2	Stock Clerks, Sales Floor
3	Farmworkers and Laborers, Crop
4	Engineers, All Other
5	Customer Service Representatives
6	Registered Nurses
7	Taxi Drivers and Chauffeurs
8	Agricultural Workers, All Other
9	Laborers and Freight, Stock, and Material Movers, Hand
10	Counter Attendants, Cafeteria, Food Concession, and Coffee Shop
11	Managers, All Other
12	Janitors and Cleaners, Except Maids and Housekeeping Cleaners
13	Computer User Support Specialists
14	Retail Salespersons
15	Maintenance and Repair Workers, General
16	Security Guards
17	Building Cleaning Workers, All Other
18	First-Line Supervisors of Production and Operating Workers
19	Manufacturing Production Technicians
20	Slaughterers and Meat Packers

Source: Indiana Workforce Development, Indiana Career Connect

Applicant Pool	
Top 20 occupations desired by applicants on their resumes in the past 12 months	
Occupations	# of applicants
Production Workers, All Other	997
Assemblers and Fabricators, All Other	747
Helpers--Production Workers	466
Laborers and Freight, Stock, and Material Movers, Hand	391
Cashiers	300
Customer Service Representatives	255
Team Assemblers	225
Office Clerks, General	190
Office and Administrative Support Workers, All Other	177
Managers, All Other	174
Retail Salespersons	169
Extraction Workers, All Other	162
Stock Clerks and Order Fillers	154
Nursing Assistants	142
First-Line Supervisors of Production and Operating Workers	139
Combined Food Preparation and Serving Workers, Including Fast Food	134
Industrial Truck and Tractor Operators	130
Janitors and Cleaners, Except Maids and Housekeeping Cleaners	123
Welders, Cutters, Solderers, and Brazers	115
Engineering Technicians, Except Drafters, All Other	113

Source: Indiana Workforce Development, Indiana Career Connect

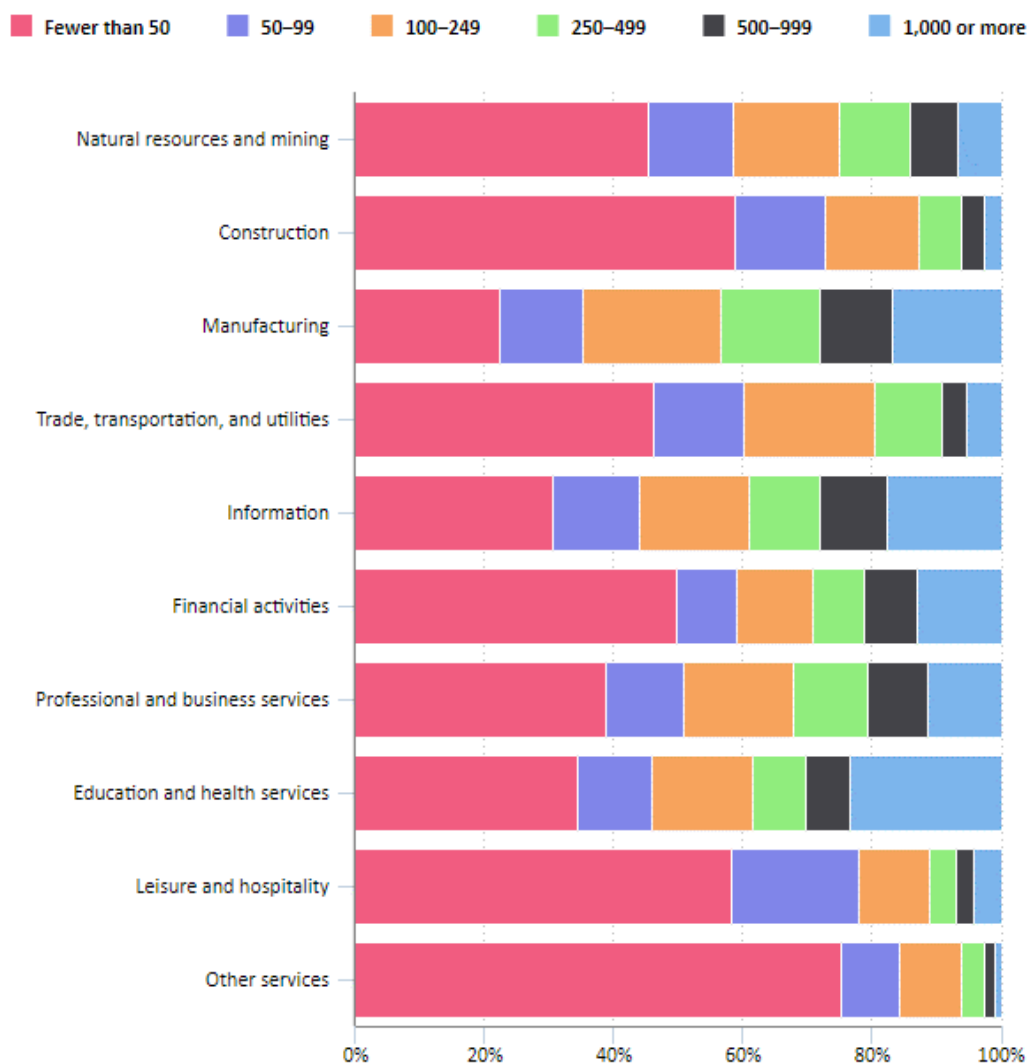
TED: The Economics Daily

43.5 percent of manufacturing workers in establishments with 250 or more workers in March 2018

JUNE 06, 2019

In March 2018, 43.5 percent of manufacturing employees worked in business establishments with 250 or more employees. In that same industry, 22.5 percent of employees worked in business establishments with fewer than 50 employees. In construction, 58.9 percent of employees worked in establishments with fewer than 50 workers, while 12.7 percent worked in establishments with 250 or more workers.

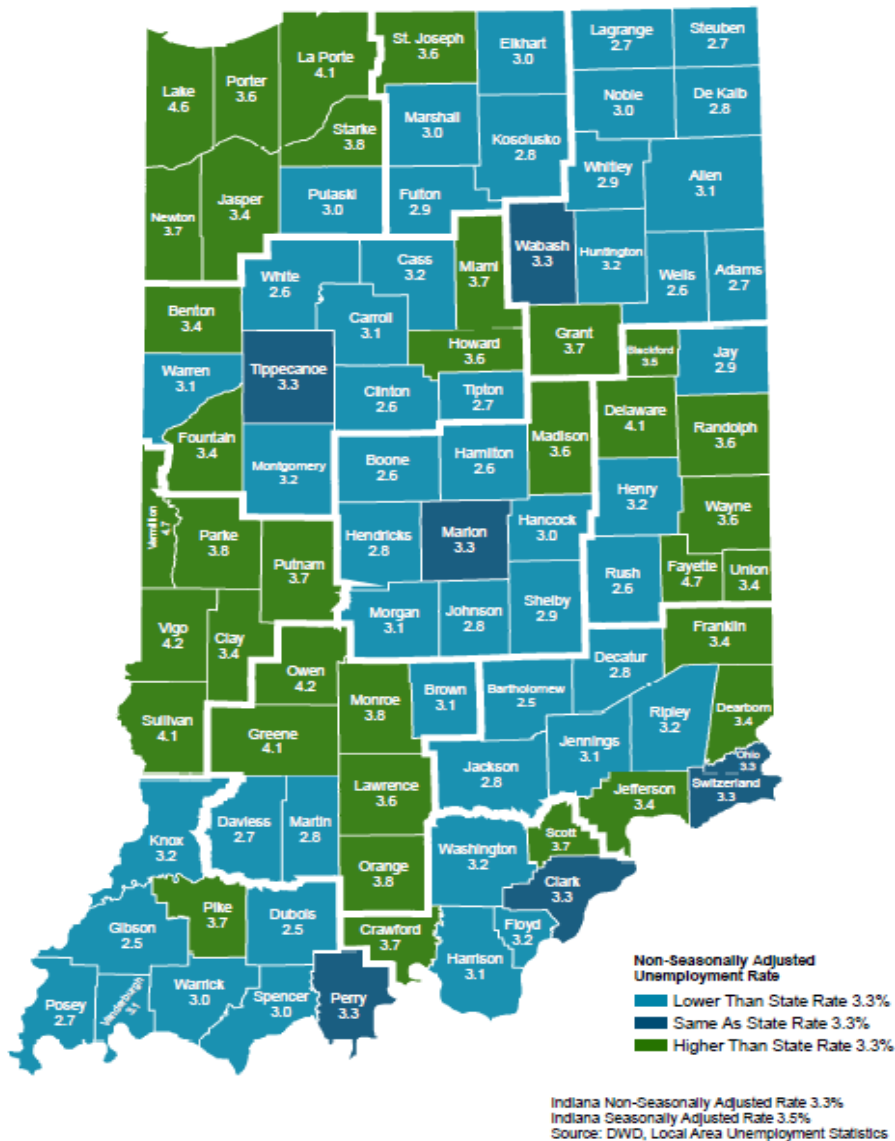
Percent distribution of employees by size of business establishment in selected private industries, March 2018



In the education and health services industry, 23.2 percent of employees worked in business establishments with 1,000 or more employees in March 2018. In that same industry, 34.4 percent of employees worked in business establishments with fewer than 50 employees. In leisure and hospitality, 4.0 percent of employees worked in business establishments with 1,000 or more employees. The majority of employees in this industry, 89 percent, worked in business establishments with 249 or fewer employees.

Bureau of Labor Statistics, U.S. Department of Labor, *The Economics Daily*, 43.5 percent of manufacturing workers in establishments with 250 or more workers in March 2018 on the Internet at <https://www.bls.gov/opub/ted/2019/43-point-5-percent-of-manufacturing-workers-in-establishments-with-250-or-more-workers-in-march-2018.htm>

County Unemployment Rates June 2019 - Non Seasonally Adjusted



INDIANA DEPARTMENT OF **WORKFORCE** DEVELOPMENT

Questions?

Please contact the DWD
Research and Analysis
Regional Labor Analyst
listed below:

Cassie Janes

Regional Labor Analyst
Research and Analysis

[Indiana Department of
Workforce Development](https://www.in.gov/workforce)

709 S. Reed Rd

Kokomo, IN 46901

765-454-4760

cjanes@dwd.in.gov