

LABOR MARKET REVIEW



January 2020 Labor Market Review

Reported by: Kathy Jaworski

Regional Workforce Analyst
[Email Kathy](#)
kjaworski@dwd.in.gov

Tel: 219-841-6347

LABOR MARKET REVIEW

Economic Growth Region 2

Statistical Data Report for January 2020, Released March 2020

State Employment and Unemployment

Unemployment rates were lower in January in 5 states and stable in 45 states and the District of Columbia, the U.S. Bureau of Labor Statistics reported. Eleven states had jobless rate decreases from a year earlier, 1 state had an increase, and 38 states and the District had little or no change. The national unemployment rate, 3.6 percent, was little changed over the month but was 0.4 percentage point lower than in January 2019. North Dakota had the lowest unemployment rate in January, 2.3 percent, while Alaska had the highest rate, 6.0 percent. In total, 15 states had unemployment rates lower than the U.S. figure of 3.6 percent, 9 states and the District of Columbia had higher rates, and 26 states had rates that were not appreciably different from that of the nation.

Nonfarm payroll employment increased in 12 states in January 2020 and was essentially unchanged in 38 states and the District of Columbia. Over the year, 18 states added nonfarm payroll jobs and 32 states and the District were essentially unchanged. The largest job gains occurred in Florida (+34,700), New York (+33,500), and Illinois (+16,600). The largest percentage gains occurred in New Hampshire (+0.7 percent), Kentucky (+0.6 percent), and Delaware, New Mexico, and West Virginia (+0.5 percent each).



Economic Growth Region (EGR) 2

Elkhart, Fulton,
Kosciusko, Marshall
and St. Joseph
Counties

Unemployment Rates by State (seasonally adjusted): January 2020

U.S. - 3.6%

Illinois - 3.5%

Indiana - 3.1%

Kentucky - 4.3%

Michigan - 3.8%

Ohio - 4.1%

Source: U.S. Department of Labor, Bureau of Labor Statistics

Unemployment Rank by County (of 92 counties): January 2020

#20 - Fulton (4.2%)

#30 - St. Joseph (4%)

#44 - Marshall (3.6%)

#71 - Kosciusko (3.1%)

#77 - Elkhart (3%)

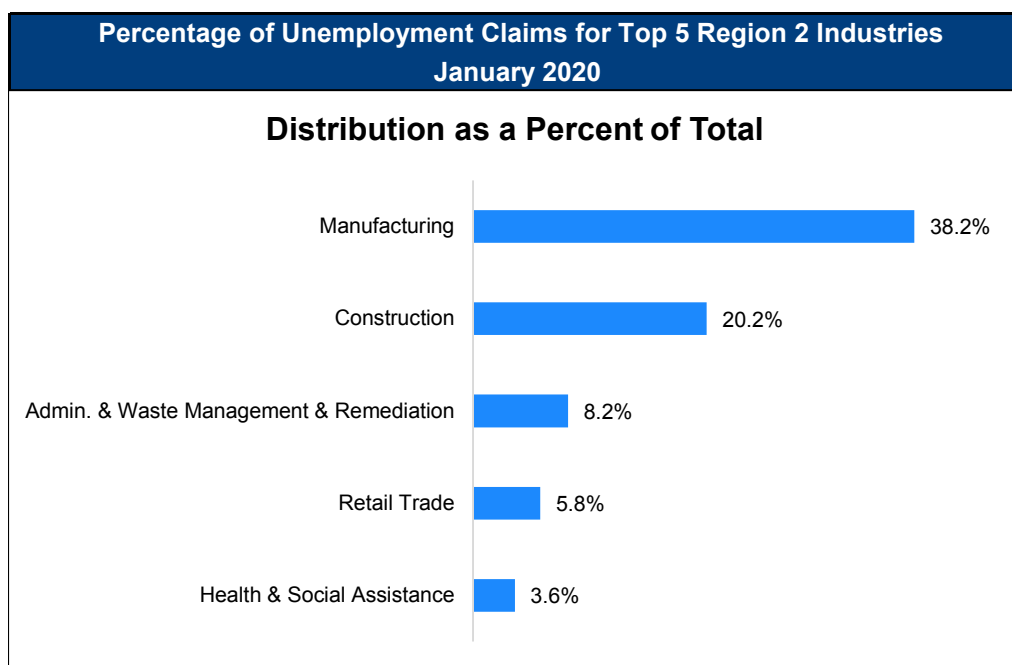
Source: Indiana Department of Workforce Development, Research and Development, Local Area Unemployment Statistics

January 2020 Labor Force Estimates (not seasonally adjusted)						
Area	Labor Force	Employed	Unemployed	Jan-20	Dec-19	Jan-19
U.S.	163,497,000	156,994,000	6,504,000	4.0%	3.4%	4.4%
IN	3,374,213	3,252,717	121,496	3.6%	3.0%	4.2%
EGR 2	321,425	310,115	11,310	3.5%	3.0%	4.1%
Elkhart-Goshen MSA	111,882	108,492	3,390	3.0%	2.7%	3.9%
South Bend-Mishawaka MSA	159,744	153,185	6,559	4.1%	3.4%	4.5%
Elkhart Co.	111,882	108,492	3,390	3.0%	2.7%	3.9%
Fulton Co.	9,551	9,152	399	4.2%	3.2%	4.5%
Kosciusko Co.	41,855	40,561	1,294	3.1%	2.6%	3.6%
Marshall Co.	22,743	21,935	808	3.6%	2.8%	4.3%
St Joseph Co.	135,394	129,975	5,419	4.0%	3.4%	4.4%
Elkhart	26,076	25,122	954	3.7%	3.6%	4.8%
Goshen	17,510	16,983	527	3.0%	2.7%	4.1%
Mishawaka	26,373	25,396	977	3.7%	3.1%	4.1%
Plymouth	4,258	4,082	176	4.1%	3.4%	5.1%
South Bend	47,650	45,624	2,026	4.3%	3.9%	4.7%
Warsaw	7,691	7,439	252	3.3%	2.5%	4.0%

Source: Indiana Department of Workforce Development, Research & Analysis, Local Area Unemployment Statistics | Unemployment Statistics Released:02/20 | Notes: The data displayed are presented as estimates only. The most recent month's data are always preliminary and are revised when the next month's data are released.

Consumer Price Index (CPI-U Change), Unadjusted Percent Change to January 2020 from				
CPI Item	Jan-19	Dec-19	Jan-19	Dec-19
	U.S. City		Midwest Region*	
All Items	2.5%	0.4%	2.5%	0.4%
Food & Beverages	1.7%	0.5%	1.6%	0.4%
Housing	2.7%	0.5%	2.5%	0.4%
Apparel	-1.3%	1.5%	-0.8%	2.0%
Transportation	2.8%	-0.1%	4.4%	0.1%
Medical Care	4.5%	0.5%	3.1%	0.4%
Recreation	1.4%	0.4%	2.1%	0.6%
Education & Communication	1.5%	0.2%	0.7%	0.2%
Other Goods & Services	2.8%	0.6%	3.1%	0.5%

*Midwest region = Midwest Urban Average. Midwest Region includes Illinois, Indiana, Iowa, Kansas, Michigan, Minnesota, Missouri, Nebraska, North Dakota, Ohio, South Dakota and Wisconsin | Source: U.S. Bureau of Labor Statistics



Source: Indiana Department of Workforce Development, Research and Analysis

WARN Notices

WARN Notices for Region 2 for January 2020				
Company	City	County	# affected	Notice Date
Mrechants Metals, LLC	New Paris	Elkhart	68	1/20/2020

Source: Indiana Department of Workforce Development, WARN Notices | For information on WARN Act requirements, you may go to the U.S. Department of Labor Employment Training Administration Fact Sheet:

<https://www.doleta.gov/programs/factsht/warn.htm>

Unemployment Claims: January 2020

Region 2

Initial Claims

01/04/20 - 536

01/11/20 - 638

01/18/20 - 553

01/25/20 - 278

Continued Claims

01/04/20 - 2,175

01/11/20 - 2,383

01/18/20 - 2,054

01/25/20 - 1,955

Total Claims

01/04/20 - 2,711

01/11/20 - 3,021

01/18/20 - 2,607

01/25/20 - 2,233

State of Indiana

Initial Claims

01/04/20 - 4,222

01/11/20 - 4,626

01/18/20 - 3,564

01/25/20 - 2,809

Continued Claims

01/04/20 - 19,475

01/11/20 - 19,512

01/18/20 - 19,651

01/25/20 - 19,871

Total Claims

01/04/20 - 23,697

01/11/20 - 24,138

01/18/20 - 23,215

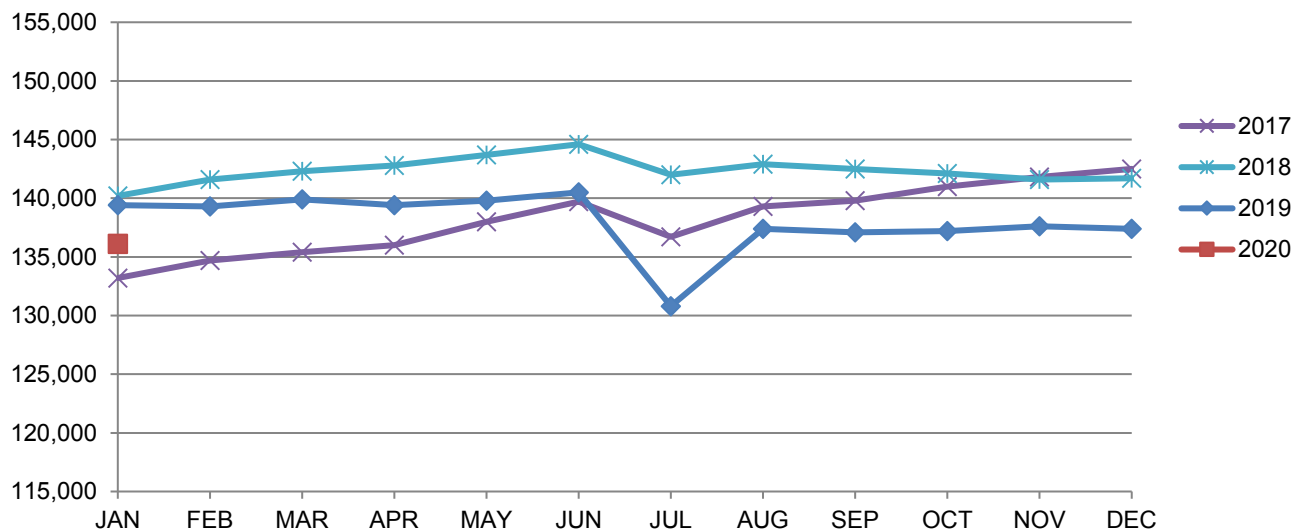
01/25/20 - 22,680

(D) Indicates one or more counties are excluded due to non-disclosure issues | Source: Indiana Department of Workforce Development, Research and Analysis

Elkhart-Goshen MSA							
Wage and Salaried Employment	January 2020			# Change	% Change	# Change	% Change
Industry	Jan-20	Dec-19	Jan-19	Dec-19 to Jan-20		Jan-19 to Jan-20	
Total Nonfarm	136,100	137,400	139,400	-1,300	-1.0%	-3,300	-2.4%
Total Private	127,200	128,400	130,500	-1,200	-0.9%	-3,300	-2.5%
Goods Producing	69,900	70,200	72,600	-300	-0.4%	-2,700	-3.7%
Service-Providing	66,200	67,200	66,800	-1,000	-1.5%	-600	-0.9%
Private Service Providing	57,300	58,200	57,900	-900	-1.6%	-600	-1.0%
Mining, Logging and Construction	4,000	4,200	4,000	-200	-4.8%	0	0.0%
Manufacturing	65,900	66,000	68,600	-100	-0.2%	-2,700	-3.9%
Durable Goods	54,500	55,100	58,200	-600	-1.1%	-3,700	-6.4%
Transportation Equipment Manufacturing	34,900	35,500	37,200	-600	-1.7%	-2,300	-6.2%
Motor Vehicle Body and Trailer Manufacturing	29,700	29,400	31,100	300	1.0%	-1,400	-4.5%
Trade, Transportation, and Utilities	19,900	20,000	20,100	-100	-0.5%	-200	-1.0%
Wholesale Trade	7,000	7,000	7,200	0	0.0%	-200	-2.8%
Retail Trade	10,000	10,000	9,900	0	0.0%	100	1.0%
Transportation, Warehousing, and Utilities	2,900	3,000	3,000	-100	-3.3%	-100	-3.3%
Information	400	400	400	0	0.0%	0	0.0%
Financial Activities	3,000	3,000	3,000	0	0.0%	0	0.0%
Professional and Business Services	9,800	10,200	10,300	-400	-3.9%	-500	-4.9%
Education and Health Services	12,600	12,800	12,600	-200	-1.6%	0	0.0%
Leisure and Hospitality	7,400	7,600	7,400	-200	-2.6%	0	0.0%
Other Services	4,200	4,200	4,100	0	0.0%	100	2.4%
Government	8,900	9,000	8,900	-100	-1.1%	0	0.0%
Federal Government	300	300	300	0	0.0%	0	0.0%
State Government	400	400	400	0	0.0%	0	0.0%
Local Government	8,200	8,300	8,200	-100	-1.2%	0	0.0%
Local Government Educational Services	6,100	6,200	5,700	-100	-1.6%	400	7.0%

Source: Indiana Dept of Workforce Development, Research and Analysis, Current Employment Statistics

Elkhart-Goshen MSA Employment Trends

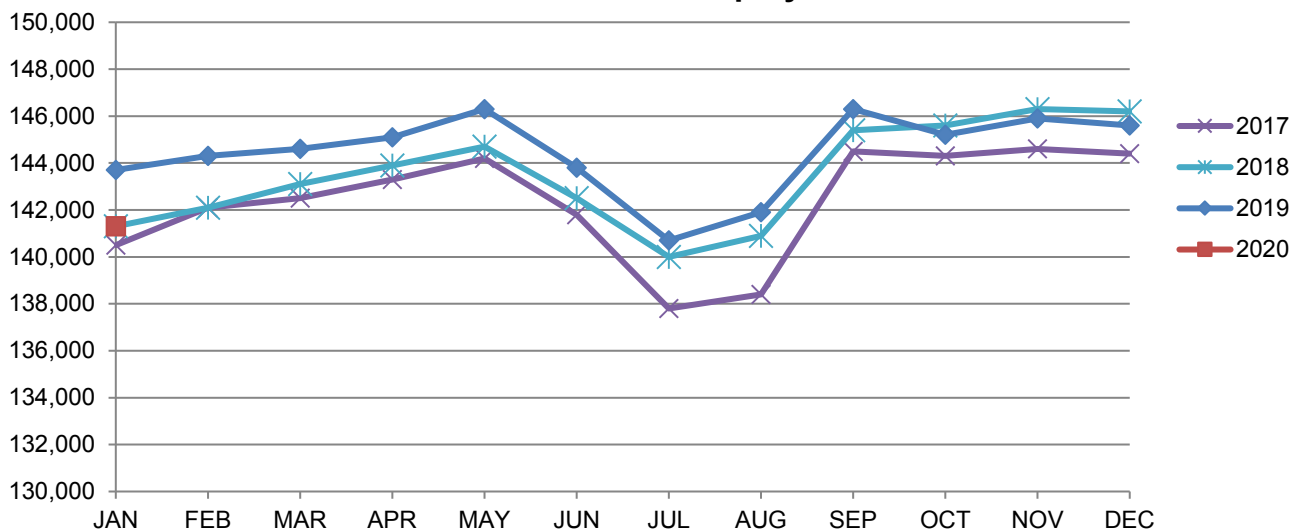


Source: Indiana Department of Workforce Development, Research & Analysis, Current Employment Statistics | Note: Historical data for the most recent 4 years (both seasonally adjusted and not seasonally adjusted) are revised near the beginning of each calendar year, prior to the release of January estimates for statewide data.

South Bend-Mishawaka MSA							
Wage and Salaried Employment	January 2020			# Change	% Change	# Change	% Change
Industry	Jan-20	Dec-19	Jan-19	Dec-19 to Jan-20		Jan-19 to Jan-20	
Total Nonfarm	141,300	145,600	143,700	-4,300	-3.0%	-2,400	-1.7%
Total Private	126,100	130,100	128,100	-4,000	-3.1%	-2,000	-1.6%
Goods Producing	21,900	22,600	22,800	-700	-3.1%	-900	-4.0%
Service Providing	119,400	123,000	120,900	-3,600	-2.9%	-1,500	-1.2%
Private Service Providing	104,200	107,500	105,300	-3,300	-3.1%	-1,100	-1.0%
Mining, Logging and Construction	5,200	5,800	5,400	-600	-10.3%	-200	-3.7%
Manufacturing	16,700	16,800	17,400	-100	-0.6%	-700	-4.0%
Trade, Transportation and Utilities	25,900	26,800	25,800	-900	-3.4%	100	0.4%
Wholesale Trade	6,600	6,700	6,800	-100	-1.5%	-200	-2.9%
Retail Trade	15,000	15,700	14,800	-700	-4.5%	200	1.4%
General Merchandise Stores	3,500	3,800	3,600	-300	-7.9%	-100	-2.8%
Transportation, Warehousing and Utilities	4,300	4,400	4,200	-100	-2.3%	100	2.4%
Information	1,300	1,400	1,400	-100	-7.1%	-100	-7.1%
Financial Activities	5,500	5,600	5,700	-100	-1.8%	-200	-3.5%
Professional & Business Services	14,400	14,700	13,800	-300	-2.0%	600	4.4%
Educational & Health Services	35,900	37,500	37,600	-1,600	-4.3%	-1,700	-4.5%
Hospitals	6,500	6,600	6,500	-100	-1.5%	0	0.0%
Leisure & Hospitality	14,400	14,600	14,200	-200	-1.4%	200	1.4%
Food Services and Drinking Places	11,100	11,400	11,300	-300	-2.6%	-200	-1.8%
Other Services	6,800	6,900	6,800	-100	-1.5%	0	0.0%
Total Government	15,200	15,500	15,600	-300	-1.9%	-400	-2.6%
Federal Government	900	900	900	0	0.0%	0	0.0%
State Government	2,700	2,700	2,600	0	0.0%	100	3.9%
Local Government	11,600	11,900	12,100	-300	-2.5%	-500	-4.1%
Local Government Educational Services	7,100	7,300	7,000	-200	-2.7%	100	1.4%

Source: Indiana Dept of Workforce Development, Research and Analysis, Current Employment Statistics

South Bend-Mishawaka MSA Employment Trends



Source: Indiana Department of Workforce Development, Research & Analysis, Current Employment Statistics | Note: Historical data for the most recent 4 years (both seasonally adjusted and not seasonally adjusted) are revised near the beginning of each calendar year, prior to the release of January estimates for statewide data.

Frequently Listed Jobs	
Top 20 job listings by number of openings in Region 2 in the past month	
Rank	Occupations
1	Production Workers, All Other
2	Registered Nurses
3	Home Health Aides
4	Nursing Assistants
5	Security Guards
6	Licensed Practical and Licensed Vocational Nurses
7	Accountants
8	Helpers--Production Workers
9	Building Cleaning Workers, All Other
10	Engineers, All Other
11	Door-To-Door Sales Workers, News and Street Vendors, and Related Workers
12	Retail Salespersons
13	Heavy and Tractor-Trailer Truck Drivers
14	Managers, All Other
15	Customer Service Representatives
16	First-Line Supervisors of Production and Operating Workers
17	Healthcare Practitioners and Technical Workers, All Other
18	Welders, Cutters, and Welder Fitters
19	Cabinetmakers and Bench Carpenters
20	Floor Sanders and Finishers

Source: Indiana Workforce Development, Indiana Career Connect

Applicant Pool	
Top 20 occupations desired by applicants on their resumes in the past 12 months	
Occupations	# of applicants
Production Workers, All Other	1,495
Assemblers and Fabricators, All Other	971
Helpers--Production Workers	740
Laborers and Freight, Stock, and Material Movers, Hand	378
Customer Service Representatives	366
Cashiers	275
Office Clerks, General	253
First-Line Supervisors of Production and Operating Workers	249
Stock Clerks and Order Fillers	224
Team Assemblers	214
Shipping, Receiving, and Traffic Clerks	210
Inspectors, Testers, Sorters, Samplers, and Weighers	205
Office and Administrative Support Workers, All Other	204
Welders, Cutters, Solderers, and Brazers	199
Industrial Truck and Tractor Operators	192
Nursing Assistants	169
Receptionists and Information Clerks	163
Retail Salespersons	150
Heavy and Tractor-Trailer Truck Drivers	148
Packers and Packagers, Hand	147

Source: Indiana Workforce Development, Indiana Career Connect

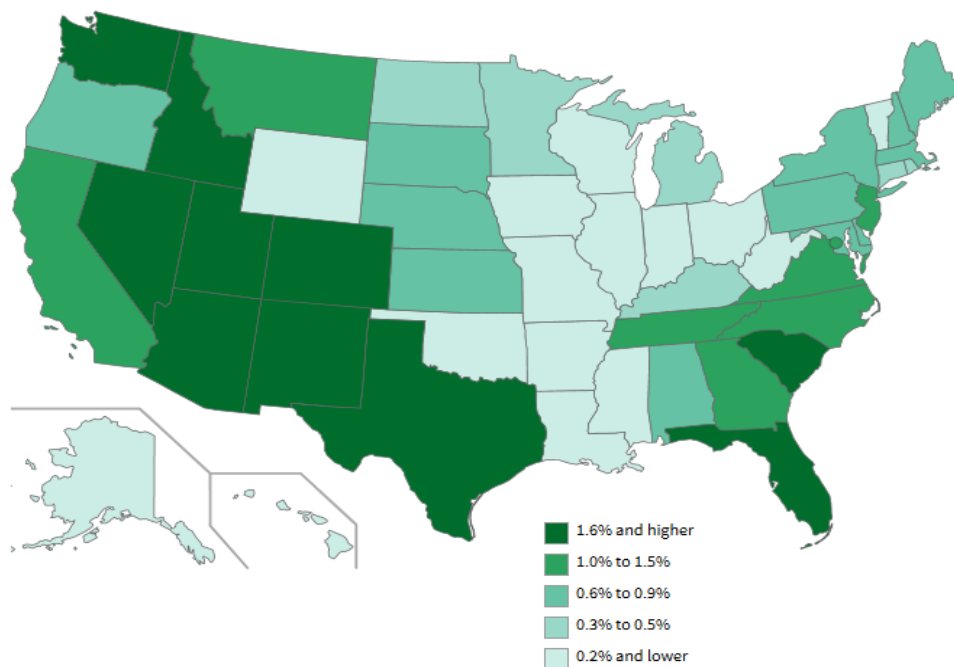
Statewide Average Weekly Hours & Earnings by Industry for January 2020			
Industry	Average Earnings (per hour)	Average # of hours worked (weekly)	Average Earnings (per week)
Construction	\$26.36	40.0	\$1,054.40
Manufacturing	\$21.26	42.3	\$899.30
Durable Goods	\$21.90	43.6	\$954.84
Fabricated Metal Product Manufacturing	\$17.61	40.5	\$713.21
Transportation Equipment Manufacturing	\$25.47	43.8	\$1,115.59
Non-Durable Goods	\$19.48	38.9	\$757.77
Retail Trade	\$15.44	29.4	\$453.94
Financial Activities	\$24.47	36.3	\$888.26
Health Care and Social Assistance	\$23.30	33.6	\$782.88
Accommodation and Food Services	\$12.29	23.7	\$291.27
Food Services and Drinking Places	\$11.88	22.9	\$272.05

Source: Indiana Department of Workforce Development, Current Employment Statistics

Utah, Arizona, and Idaho had largest percentage job increases in year ending January 2020

Eighteen states had statistically significant increases in nonfarm payroll employment from January 2019 to January 2020. Employment was essentially unchanged over the year in 32 states and the District of Columbia. The largest percentage gains occurred in Utah (+2.9 percent) and Arizona and Idaho (+2.5 percent each).

Change in nonfarm employment by state, January 2019 to January 2020



Hover over a state to see data.
 Hover over legend items to see states in a category.
 Source: U.S. Bureau of Labor Statistics.

The largest job gains from January 2019 to January 2020 occurred in Texas (+279,900), California (+251,800), and Florida (+177,400).

These data are from the Current Employment Statistics (State and Metro Area) program and are seasonally adjusted. Data for the most recent month are preliminary. To learn more, see "State Employment and Unemployment — January 2020." Also see more charts and maps on state employment and unemployment.

Bureau of Labor Statistics, U.S. Department of Labor, The Economics Daily, Utah, Arizona, and Idaho had largest percentage job increases in year ending January 2020 on the Internet at <https://www.bls.gov/opub/ted/2020/utah-arizona-and-idaho-had-largest-percentage-job-increases-in-year-ending-january-2020.htm>



Questions?

Kathy Jaworski

Indiana Department of
Workforce Development

219-841-6347

kjaworski@dwd.in.gov

