



HOOSIERS BY THE NUMBERS

Your premier source for labor market information for Indiana.



INDIANA
DEPARTMENT OF
WORKFORCE
DEVELOPMENT

LABOR MARKET REVIEW



September 2019 Labor Market Review

Reported by: Kathy Jaworski

Regional Workforce Analyst

[Email Kathy](mailto:kjaworski@dwd.in.gov)

kjaworski@dwd.in.gov

Tel: 219-841-6347



INDIANA
DEPARTMENT OF
WORKFORCE
DEVELOPMENT

LABOR MARKET REVIEW

Economic Growth Region 2

Statistical Data Report for September 2019, Released November 2019

State Employment and Unemployment

Unemployment rates were lower in September in 7 states, higher in 4 states, and stable in 39 states and the District of Columbia, the U.S. Bureau of Labor Statistics reported. Seven states had jobless rate decreases from a year earlier, 2 states had increases, and 41 states and the District had little or no change. The national unemployment rate declined by 0.2 percentage point from August to 3.5 percent, but was little changed from September 2018. In total, 15 states had unemployment rates lower than the U.S. figure of 3.5 percent, 14 states and the District of Columbia had higher rates, and 21 states had rates that were not appreciably different from that of the nation.

Nonfarm payroll employment increased in 3 states in September 2019, decreased in 2, and was essentially unchanged in 45 states and the District of Columbia. Over the year, 27 states added nonfarm payroll jobs and 23 states and the District were essentially unchanged.



Economic Growth Region (EGR) 2

Elkhart, Fulton,
Kosciusko, Marshall
and St. Joseph
Counties

Unemployment Rates by State (seasonally adjusted): September 2019

U.S. - 3.5%

Illinois - 3.9%

Indiana - 3.2%

Kentucky - 4.4%

Michigan - 4.2%

Ohio - 4.2%

Source: U.S. Department of Labor, Bureau of Labor Statistics

Unemployment Rank by County (of 92 counties): September 2019

#16 - St. Joseph (3.2%)

#43 - Elkhart (2.7%)

#46 - Marshall (2.7%)

#58 - Fulton (2.5%)

#77 - Kosciusko (2.3%)

Source: Indiana Department of Workforce Development, Research and Development, Local Area Unemployment Statistics

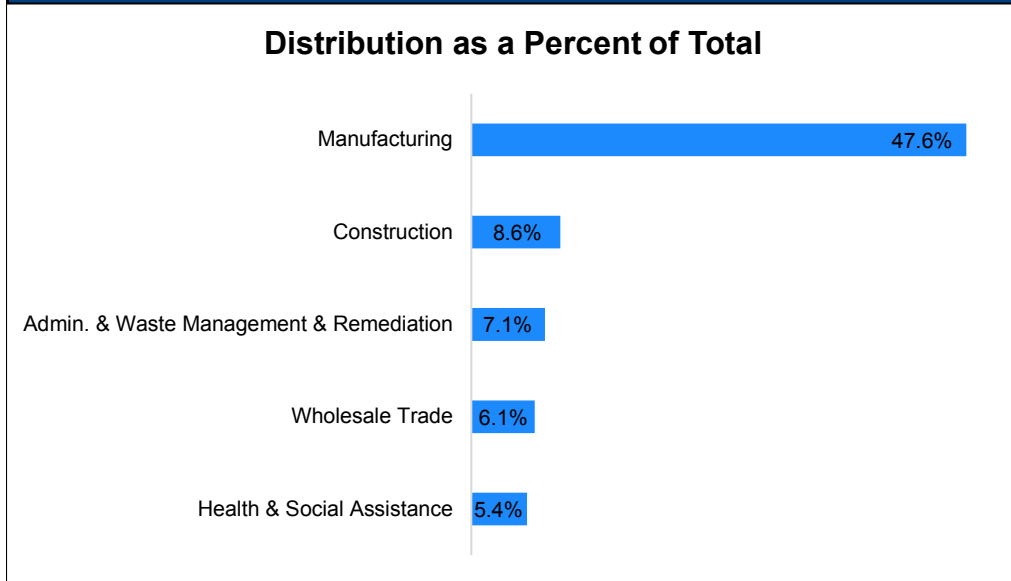
September 2019 Labor Force Estimates (not seasonally adjusted)						
Area	Labor Force	Employed	Unemployed	Sep-19	Aug-19	Sep-18
U.S.	163,943,000	158,478,000	5,465,000	3.3%	3.8%	3.6%
IN	3,368,659	3,273,243	95,416	2.8%	3.2%	3.1%
EGR 2	327,332	317,968	9,364	2.9%	3.2%	2.8%
Elkhart-Goshen MSA	115,545	112,438	3,107	2.7%	3.0%	2.5%
South Bend-Mishawaka MSA	160,294	154,944	5,350	3.3%	3.8%	3.3%
Elkhart Co.	115,545	112,438	3,107	2.7%	3.0%	2.5%
Fulton Co.	9,922	9,673	249	2.5%	2.9%	3.1%
Kosciusko Co.	42,944	41,952	992	2.3%	2.7%	2.3%
Marshall Co.	22,939	22,331	608	2.7%	3.0%	2.8%
St Joseph Co.	135,982	131,574	4,408	3.2%	3.6%	3.3%
Elkhart	27,180	26,199	981	3.6%	3.8%	3.1%
Goshen	17,942	17,464	478	2.7%	2.8%	2.3%
Mishawaka	26,178	25,351	827	3.2%	3.4%	2.9%
Plymouth	4,278	4,163	115	2.7%	2.9%	3.7%
South Bend	48,266	46,417	1,849	3.8%	4.1%	3.9%
Warsaw	7,818	7,608	210	2.7%	3.0%	2.4%

Source: Indiana Department of Workforce Development, Research & Analysis, Local Area Unemployment Statistics | Unemployment Statistics Released:10/19 | Notes: The data displayed are presented as estimates only. The most recent month's data are always preliminary and are revised when the next month's data are released.

Consumer Price Index (CPI-U Change), Unadjusted Percent Change to September 2019 from				
CPI Item	Sep-18	Aug-19	Sep-18	Aug-19
	U.S. City		Midwest Region*	
All Items	1.7%	0.1%	1.4%	0.0%
Food & Beverages	1.8%	0.2%	1.6%	0.2%
Housing	3.0%	0.2%	2.6%	0.2%
Apparel	-0.3%	2.7%	0.8%	3.0%
Transportation	-1.4%	-0.8%	-1.4%	-1.1%
Medical Care	3.5%	0.1%	3.0%	0.0%
Recreation	1.0%	-0.1%	0.4%	-0.1%
Education & Communication	0.4%	0.2%	-0.2%	0.3%
Other Goods & Services	2.2%	0.0%	2.6%	0.4%

*Midwest region = Midwest Urban Average. Midwest Region includes Illinois, Indiana, Iowa, Kansas, Michigan, Minnesota, Missouri, Nebraska, North Dakota, Ohio, South Dakota and Wisconsin | Source: U.S. Bureau of Labor Statistics

Percentage of Unemployment Claims for Top 5 Region 2 Industries September 2019



Source: Indiana Department of Workforce Development, Research and Analysis

WARN Notices

WARN Notices for Region 2 for September 2019				
Company	City	County	# affected	Notice Date
Bayer U.S., LLC	Mishawaka	St Joseph	172	9/4/2019

Source: Indiana Department of Workforce Development, WARN Notices | For information on WARN Act requirements, you may go to the U.S. Department of Labor Employment Training Administration Fact Sheet:

<https://www.doleta.gov/programs/factsht/warn.htm>

Unemployment Claims: September 2019

Region 2

Initial Claims

09/07/19 - 293(D)

09/14/19 - 216(D)

09/21/19 - 222(D)

09/28/19 - 320

Continued Claims

09/07/19 - 1,386

09/14/19 - 1,340

09/21/19 - 1,372

09/28/19 - 1,622

Total Claims

09/07/19 - 1,679

09/14/19 - 1,556

09/21/19 - 1,594

09/28/19 - 1,942

State of Indiana

Initial Claims

09/07/19 - 1,733

09/14/19 - 1,736

09/21/19 - 2,422

09/28/19 - 2,022

Continued Claims

09/07/19 - 10,927

09/14/19 - 10,715

09/21/19 - 10,854

09/28/19 - 11,414

Total Claims

09/07/19 - 12,660

09/14/19 - 12,451

09/21/19 - 13,276

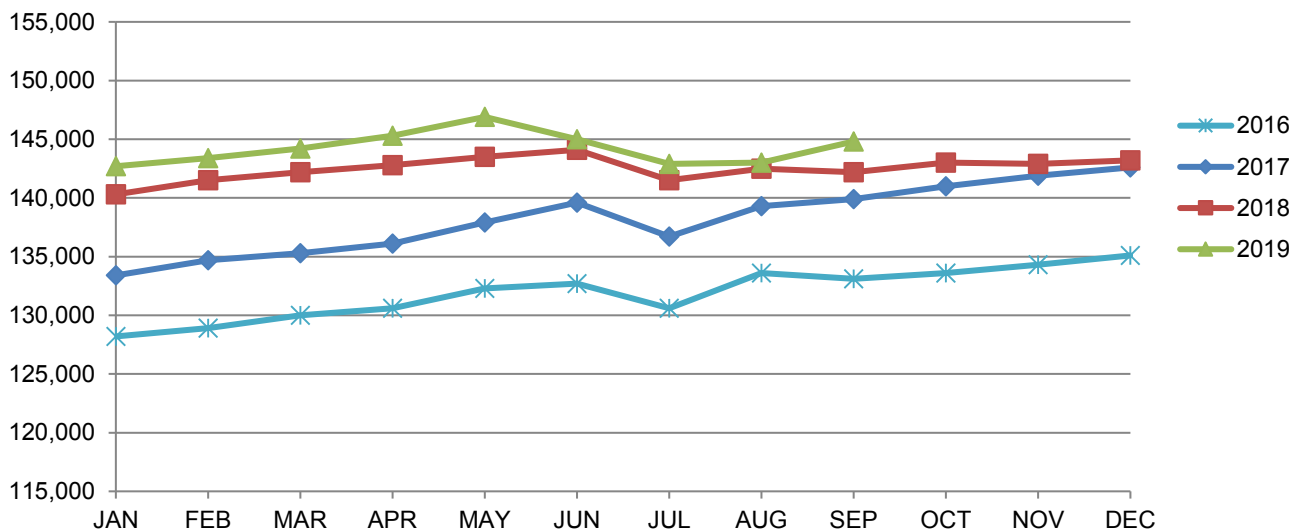
09/28/19 - 13,436

(D) Indicates one or more counties are excluded due to non-disclosure issues | Source: Indiana Department of Workforce Development, Research and Analysis

Elkhart-Goshen MSA							
Wage and Salaried Employment	September 2019			# Change	% Change	# Change	% Change
Industry	Sep-19	Aug-19	Sep-18	Aug-19 to Sep-19		Sep-18 to Sep-19	
Total Nonfarm	143,400	143,600	142,200	-200	-0.1%	1,200	0.8%
Total Private	134,900	135,600	133,200	-700	-0.5%	1,700	1.3%
Goods Producing	74,900	75,300	73,800	-400	-0.5%	1,100	1.5%
Service-Providing	68,500	68,300	68,400	200	0.3%	100	0.2%
Private Service Providing	60,000	60,300	59,400	-300	-0.5%	600	1.0%
Mining, Logging and Construction	4,400	4,400	4,100	0	0.0%	300	7.3%
Manufacturing	70,500	70,900	69,700	-400	-0.6%	800	1.2%
Durable Goods	57,900	58,900	59,300	-1,000	-1.7%	-1,400	-2.4%
Transportation Equipment Manufacturing	34,100	34,700	36,400	-600	-1.7%	-2,300	-6.3%
Motor Vehicle Body and Trailer Manufacturing	29,300	29,800	30,500	-500	-1.7%	-1,200	-3.9%
Trade, Transportation, and Utilities	20,500	20,600	20,700	-100	-0.5%	-200	-1.0%
Wholesale Trade	7,400	7,400	7,200	0	0.0%	200	2.8%
Retail Trade	9,600	9,600	10,000	0	0.0%	-400	-4.0%
Transportation, Warehousing, and Utilities	3,500	3,600	3,500	-100	-2.8%	0	0.0%
Information	400	400	400	0	0.0%	0	0.0%
Financial Activities	3,000	3,000	3,000	0	0.0%	0	0.0%
Professional and Business Services	11,300	11,300	10,700	0	0.0%	600	5.6%
Education and Health Services	12,300	12,300	12,400	0	0.0%	-100	-0.8%
Leisure and Hospitality	8,300	8,500	8,100	-200	-2.4%	200	2.5%
Other Services	4,200	4,200	4,100	0	0.0%	100	2.4%
Government	8,500	8,000	9,000	500	6.3%	-500	-5.6%
Federal Government	300	300	300	0	0.0%	0	0.0%
State Government	400	400	400	0	0.0%	0	0.0%
Local Government	7,800	7,300	8,300	500	6.9%	-500	-6.0%
Local Government Educational Services	5,000	4,600	5,600	400	8.7%	-600	-10.7%

Source: Indiana Dept of Workforce Development, Research and Analysis, Current Employment Statistics

Elkhart-Goshen MSA Employment Trends

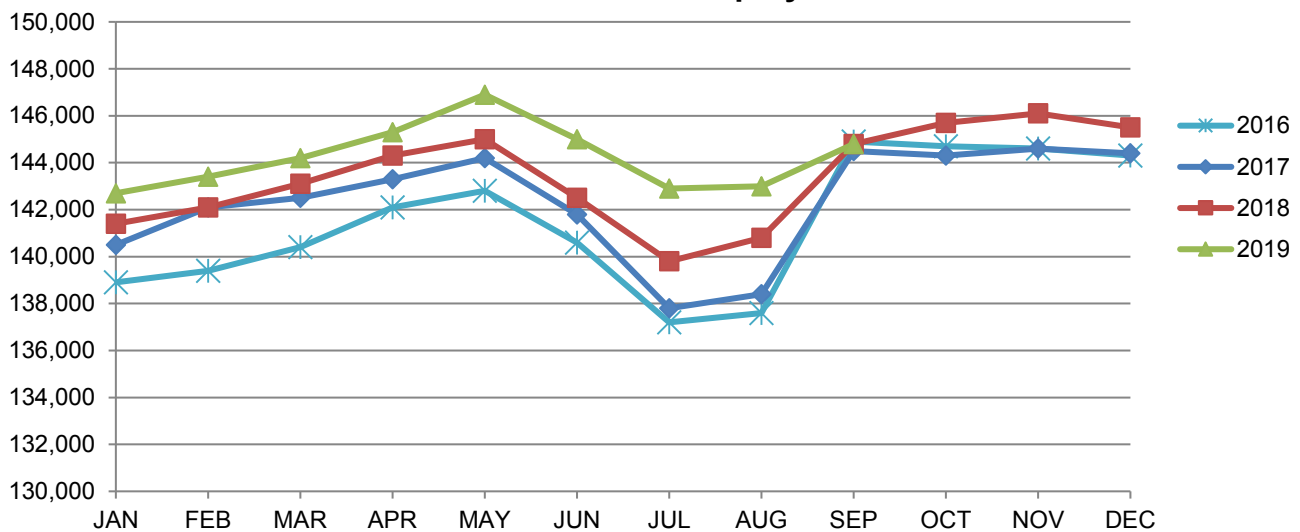


Source: Indiana Department of Workforce Development, Research & Analysis, Current Employment Statistics | Note: Historical data for the most recent 4 years (both seasonally adjusted and not seasonally adjusted) are revised near the beginning of each calendar year, prior to the release of January estimates for statewide data.

South Bend-Mishawaka MSA							
Wage and Salaried Employment	September 2019			# Change	% Change	# Change	% Change
Industry	Sep-19	Aug-19	Sep-18	Aug-19 to Sep-19		Sep-18 to Sep-19	
Total Nonfarm	144,800	143,000	144,800	1,800	1.3%	0	0.0%
Total Private	128,600	128,400	129,000	200	0.2%	-400	-0.3%
Goods Producing	24,600	24,900	23,700	-300	-1.2%	900	3.8%
Service Providing	120,200	118,100	121,100	2,100	1.8%	-900	-0.7%
Private Service Providing	104,000	103,500	105,300	500	0.5%	-1,300	-1.2%
Mining, Logging and Construction	6,700	6,800	6,000	-100	-1.5%	700	11.7%
Manufacturing	17,900	18,100	17,700	-200	-1.1%	200	1.1%
Trade, Transportation and Utilities	25,500	25,500	25,800	0	0.0%	-300	-1.2%
Wholesale Trade	7,000	6,900	6,800	100	1.5%	200	2.9%
Retail Trade	14,100	14,200	14,700	-100	-0.7%	-600	-4.1%
General Merchandise Stores	3,500	3,500	3,600	0	0.0%	-100	-2.8%
Transportation, Warehousing and Utilities	4,400	4,400	4,300	0	0.0%	100	2.3%
Information	1,400	1,500	1,500	-100	-6.7%	-100	-6.7%
Financial Activities	5,600	5,600	5,500	0	0.0%	100	1.8%
Professional & Business Services	14,000	14,000	13,900	0	0.0%	100	0.7%
Educational & Health Services	35,300	34,300	36,900	1,000	2.9%	-1,600	-4.3%
Hospitals	6,600	6,600	6,300	0	0.0%	300	4.8%
Leisure & Hospitality	15,300	15,600	14,900	-300	-1.9%	400	2.7%
Food Services and Drinking Places	11,500	11,700	11,500	-200	-1.7%	0	0.0%
Other Services	6,900	7,000	6,800	-100	-1.4%	100	1.5%
Total Government	16,200	14,600	15,800	1,600	11.0%	400	2.5%
Federal Government	1,000	1,000	900	0	0.0%	100	11.1%
State Government	2,600	2,300	2,600	300	13.0%	0	0.0%
Local Government	12,600	11,300	12,300	1,300	11.5%	300	2.4%
Local Government Educational Services	7,000	5,500	6,900	1,500	27.3%	100	1.5%

Source: Indiana Dept of Workforce Development, Research and Analysis, Current Employment Statistics

South Bend-Mishawaka MSA Employment Trends



Source: Indiana Department of Workforce Development, Research & Analysis, Current Employment Statistics | Note: Historical data for the most recent 4 years (both seasonally adjusted and not seasonally adjusted) are revised near the beginning of each calendar year, prior to the release of January estimates for statewide data.

Frequently Listed Jobs	
Top 20 job listings by number of openings in Region 2 in the past month	
Rank	Occupations
1	Helpers--Production Workers
2	Retail Salespersons
3	Security Guards
4	Production Workers, All Other
5	Laborers and Freight, Stock, and Material Movers, Hand
6	Nursing Assistants
7	Cooks, Institution and Cafeteria
8	Customer Service Representatives
9	Licensed Practical and Licensed Vocational Nurses
10	Managers, All Other
11	Registered Nurses
12	Engineers, All Other
13	Computer User Support Specialists
14	Maids and Housekeeping Cleaners
15	Maintenance Workers, Machinery
16	Dietitians and Nutritionists
17	First-Line Supervisors of Office and Administrative Support Workers
18	First-Line Supervisors of Transportation and Material Moving Machine and Vehicle Operators
19	Heavy and Tractor-Trailer Truck Drivers
20	Accountants

Source: Indiana Workforce Development, Indiana Career Connect

Applicant Pool	
Top 20 occupations desired by applicants on their resumes in the past 12 months	
Occupations	# of applicants
Production Workers, All Other	883
Assemblers and Fabricators, All Other	554
Helpers--Production Workers	447
Customer Service Representatives	269
Laborers and Freight, Stock, and Material Movers, Hand	261
Cashiers	195
Office Clerks, General	178
First-Line Supervisors of Production and Operating Workers	156
Stock Clerks and Order Fillers	150
Welders, Cutters, Solderers, and Brazers	141
Office and Administrative Support Workers, All Other	137
Team Assemblers	130
Shipping, Receiving, and Traffic Clerks	128
Inspectors, Testers, Sorters, Samplers, and Weighers	125
Industrial Truck and Tractor Operators	111
Retail Salespersons	109
Nursing Assistants	108
Receptionists and Information Clerks	104
Packers and Packagers, Hand	103
Managers, All Other	97

Source: Indiana Workforce Development, Indiana Career Connect

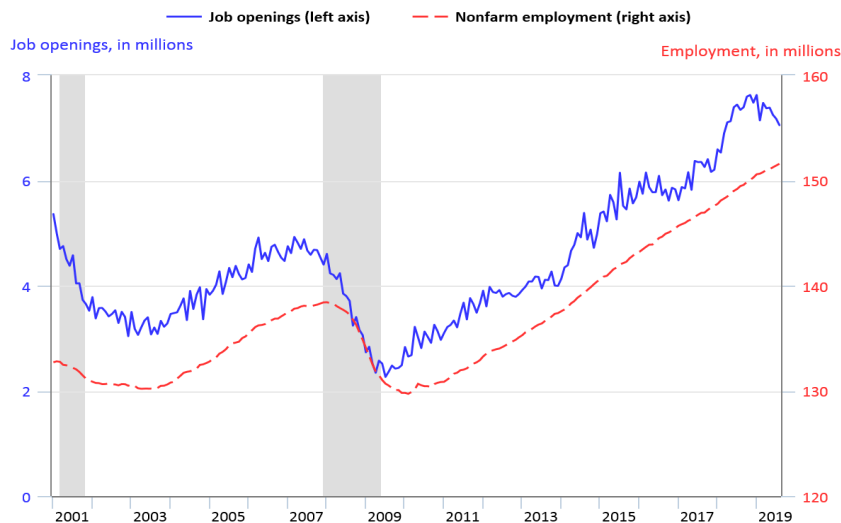
Statewide Average Weekly Hours & Earnings by Industry for September 2019			
Industry	Average Earnings (per hour)	Average # of hours worked (weekly)	Average Earnings (per week)
Construction	\$27.09	42.4	\$1,148.62
Manufacturing	\$21.98	42.7	\$938.55
Durable Goods	\$22.66	43.5	\$985.71
Fabricated Metal Product Manufacturing	\$18.12	42.9	\$777.35
Transportation Equipment Manufacturing	\$25.97	45.5	\$1,181.64
Non-Durable Goods	\$20.18	40.7	\$821.33
Retail Trade	\$15.26	30.5	\$465.43
Financial Activities	\$23.95	35.8	\$857.41
Health Care and Social Assistance	\$24.00	33.4	\$801.60
Accommodation and Food Services	\$12.20	23.8	\$290.36
Food Services and Drinking Places	\$11.79	22.9	\$269.99

Source: Indiana Department of Workforce Development, Current Employment Statistics

Job openings and employment, August 2019

In August 2019, there were 7.1 million job openings in nonfarm establishments, while total nonfarm employment stood at 151.6 million. A year earlier, in August 2018, there were 7.3 million job openings, and employment was 149.5 million. The number of job openings has generally trended upward since a series low of 2.3 million in July 2009. (BLS job openings data begin in December 2000.) Since December 2014, job openings have been above the March 2007 prerecession peak of 4.9 million.

Job openings and employment, total nonfarm, seasonally adjusted, January 2001–August 2019



Shaded areas represent recessions as determined by the National Bureau of Economic Research.
Source: U.S. Bureau of Labor Statistics.

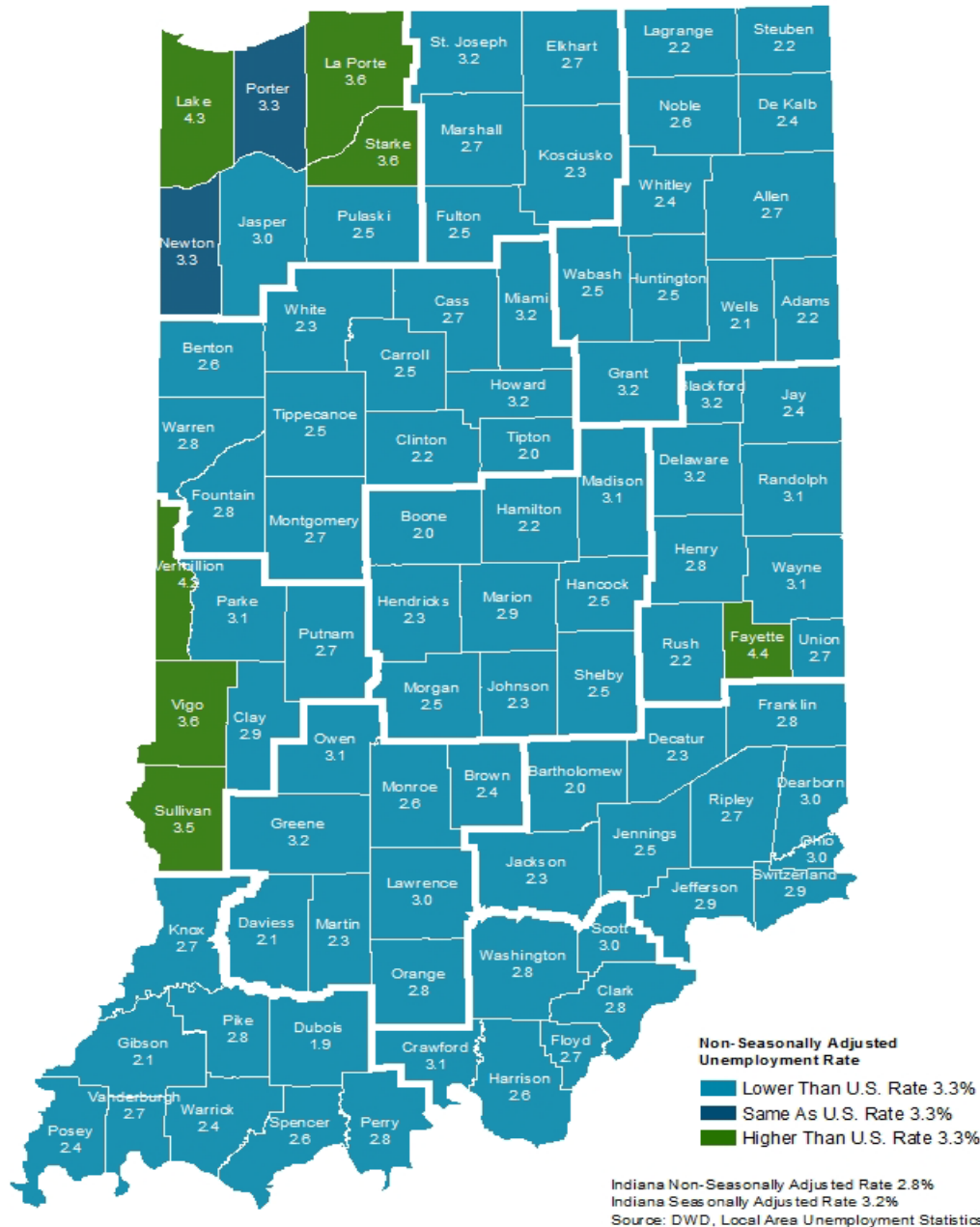
The July 2009 low point in the number of job openings was one month after the official end of the most recent recession. Total nonfarm employment continued to decline after the end of the recession, reaching its recent low of 129.7 million in February 2010. Employment has trended upward since then and since May 2014, it has been above its January 2008 peak of 138.4 million.

These job openings data are from the Job Openings and Labor Turnover Survey. See "Job Openings and Labor Turnover — August 2019" to learn more. Also see data on job openings, hires, and employment separations in the Charts related to the latest "Job Openings and Labor Turnover Survey" news release. Employment data are from the Current Employment Statistics program. Job openings and employment data are seasonally adjusted; data for the most recent month are preliminary.

Bureau of Labor Statistics, U.S. Department of Labor, The Economics Daily, Job openings and employment, August 2019 on the Internet at <https://www.bls.gov/opub/ted/2019/job-openings-and-employment-august-2019.htm> (visited October 23, 2019).



County Unemployment Rates September 2019



Questions?

Please contact the DWD
Research and Analysis
Regional Labor Analyst
listed below:

Kathy Jaworski

Regional Labor Analyst
Research and Analysis

[Indiana Department of
Workforce Development](http://Indiana Department of Workforce Development)

219-841-6347

kjaworski@dwd.in.gov