

## LABOR MARKET REVIEW



June 2019  
Labor Market Review

Reported by: Kathy Jaworski

Regional Workforce Analyst  
[Email Kathy](#)  
[kjaworski@dwd.in.gov](mailto:kjaworski@dwd.in.gov)

Tel: 219-841-6347

## LABOR MARKET REVIEW

# Economic Growth Region 2

Statistical Data Report for June 2019, Released August 2019

## State Employment and Unemployment

Unemployment rates were lower in June in 6 states and stable in 44 states and the District of Columbia, the U.S. Bureau of Labor Statistics reported. Three states had jobless rate decreases from a year earlier and 47 states and the District had little or no change. The national unemployment rate, 3.7 percent, was little changed from May but was 0.3 percentage point lower than in June 2018.

Vermont had the lowest unemployment rate in June, 2.1 percent. The rates in Alabama (3.5 percent), Arkansas (3.5 percent), New Jersey (3.5 percent), and Texas (3.4 percent) set new series lows. (All state series begin in 1976.) In total, 13 states had unemployment rates lower than the U.S. figure of 3.7 percent, 9 states and the District of Columbia had higher rates.

Nonfarm payroll employment increased in four states in June 2019: California (+46,200, or +0.3 percent), Texas (+45,000, or +0.4 percent), Georgia (+20,200, or +0.4 percent), and Tennessee (+9,600, or +0.3 percent). Twenty-eight states had over-the-year increases in nonfarm payroll employment in June. The largest job gains occurred in Texas (+315,600), California (+296,100), and Florida (+218,800). The largest percentage gain occurred in Nevada (+3.3 percent), followed by Arizona (+2.8 percent) and Utah and Washington (+2.7 percent each)



## Economic Growth Region (EGR) 2

Elkhart, Fulton,  
Kosciusko, Marshall  
and St. Joseph  
Counties

## Unemployment Rates by State (seasonally adjusted): June 2019

**U.S. - 3.7%**

Illinois - 4.3%

**Indiana - 3.5%**

Kentucky - 4.1%

Michigan - 4.2%

Ohio - 4%

Source: U.S. Department of Labor, Bureau of Labor Statistics

## Unemployment Rank by County (of 92 counties): June 2019

#26 - St. Joseph (3.6%)

#60 - Elkhart (3%)

#62 - Marshall (3%)

#67 - Fulton (2.9%)

#76 - Kosciusko (2.8%)

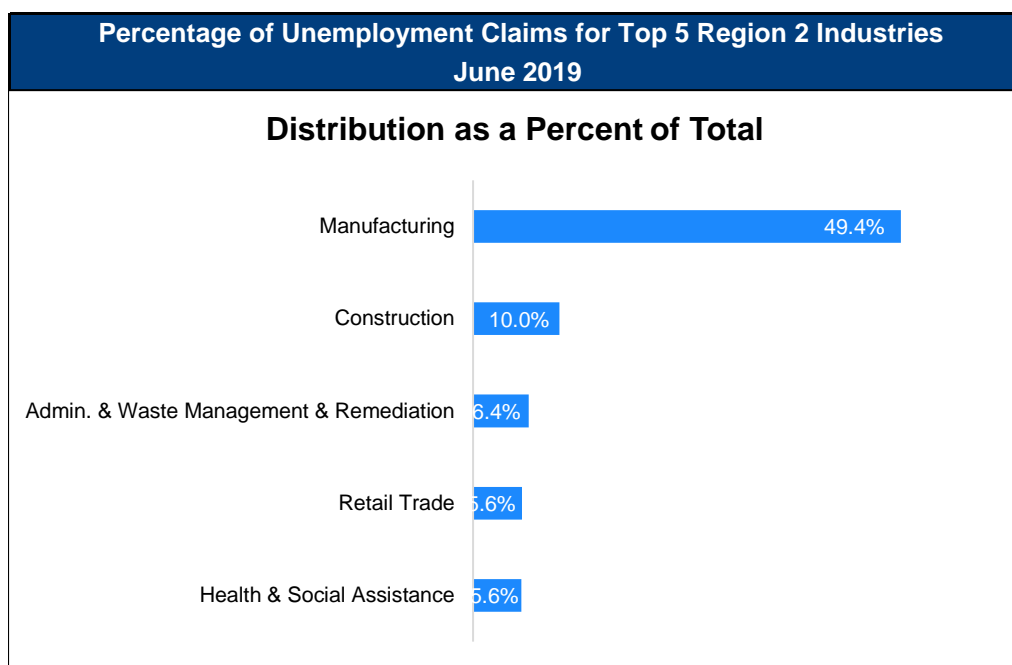
Source: Indiana Department of Workforce Development, Research and Development, Local Area Unemployment Statistics

June 2019 Labor Force Estimates (not seasonally adjusted)						
Area	Labor Force	Employed	Unemployed	Jun-19	May-19	Jun-18
U.S.	164,120,000	157,828,000	6,292,000	3.8%	3.4%	4.2%
IN	3,412,031	3,298,895	113,136	3.3%	2.9%	3.7%
EGR 2	335,576	324,697	10,879	3.2%	2.8%	3.3%
Elkhart-Goshen MSA	118,602	115,049	3,553	3.0%	2.6%	2.8%
South Bend-Mishawaka MSA	164,180	157,851	6,329	3.9%	3.3%	3.9%
Elkhart Co.	118,602	115,049	3,553	3.0%	2.6%	2.8%
Fulton Co.	10,215	9,917	298	2.9%	2.6%	3.5%
Kosciusko Co.	44,097	42,856	1,241	2.8%	2.4%	3.0%
Marshall Co.	23,673	22,955	718	3.0%	2.8%	3.5%
St Joseph Co.	138,989	133,920	5,069	3.6%	3.2%	3.8%
Elkhart	27,866	26,807	1,059	3.8%	3.3%	3.3%
Goshen	18,393	17,869	524	2.8%	2.5%	2.8%
Mishawaka	26,777	25,803	974	3.6%	3.1%	3.4%
Plymouth	4,421	4,280	141	3.2%	2.7%	4.9%
South Bend	49,251	47,245	2,006	4.1%	3.5%	4.4%
Warsaw	8,030	7,772	258	3.2%	2.7%	3.2%

Source: Indiana Department of Workforce Development, Research & Analysis, Local Area Unemployment Statistics | Unemployment Statistics Released:08/19 | Notes: The data displayed are presented as estimates only. The most recent month's data are always preliminary and are revised when the next month's data are released.

Consumer Price Index (CPI-U Change), Unadjusted Percent Change to June 2019 from				
CPI Item	Jun-18	May-19	Jun-18	May-19
	U.S. City		Midwest Region*	
All Items	1.6%	0.0%	1.2%	0.0%
Food & Beverages	1.9%	0.0%	1.5%	0.2%
Housing	3.0%	0.5%	2.6%	0.4%
Apparel	-1.3%	-0.5%	-2.5%	-0.7%
Transportation	-0.7%	-1.1%	-0.8%	-0.8%
Medical Care	2.0%	0.1%	2.0%	0.4%
Recreation	0.8%	-0.1%	-1.0%	-0.2%
Education & Communication	0.6%	0.1%	-0.2%	0.2%
Other Goods & Services	1.5%	-0.1%	1.9%	-0.4%

\*Midwest region = Midwest Urban Average. Midwest Region includes Illinois, Indiana, Iowa, Kansas, Michigan, Minnesota, Missouri, Nebraska, North Dakota, Ohio, South Dakota and Wisconsin | Source: U.S. Bureau of Labor Statistics



Source: Indiana Department of Workforce Development, Research and Analysis

## WARN Notices

WARN Notices for Region 2 for June 2019				
Company	City	County	# affected	Notice Date

**There are no WARN Notices for June 2019 for Region 2.**

Source: Indiana Department of Workforce Development, WARN Notices | For information on WARN Act requirements, you may go to the U.S. Department of Labor Employment Training Administration Fact Sheet:

<https://www.doleta.gov/programs/factsht/warn.htm>

## Unemployment Claims: June 2019

### Region 2

#### Initial Claims

06/01/19 - 322(D)

06/08/19 - 672(D)

06/15/19 - 237(D)

06/22/19 - 212(D)

06/29/19 - 284(D)

#### Continued Claims

06/01/19 - 1,794

06/08/19 - 1,407

06/15/19 - 1,390

06/22/19 - 1,300

06/29/19 - 1,336

#### Total Claims

06/01/19 - 2,116

06/08/19 - 2,079

06/15/19 - 1,627

06/22/19 - 1,512

06/29/19 - 1,620

### State of Indiana

#### Initial Claims

06/01/19 - 1,847

06/08/19 - 2,530

06/15/19 - 1,843

06/22/19 - 1,687

06/29/19 - 1,963

#### Continued Claims

06/01/19 - 11,792

06/08/19 - 11,269

06/15/19 - 11,263

06/22/19 - 11,033

06/29/19 - 10,500

#### Total Claims

06/01/19 - 13,639

06/08/19 - 13,799

06/15/19 - 13,106

06/22/19 - 12,720

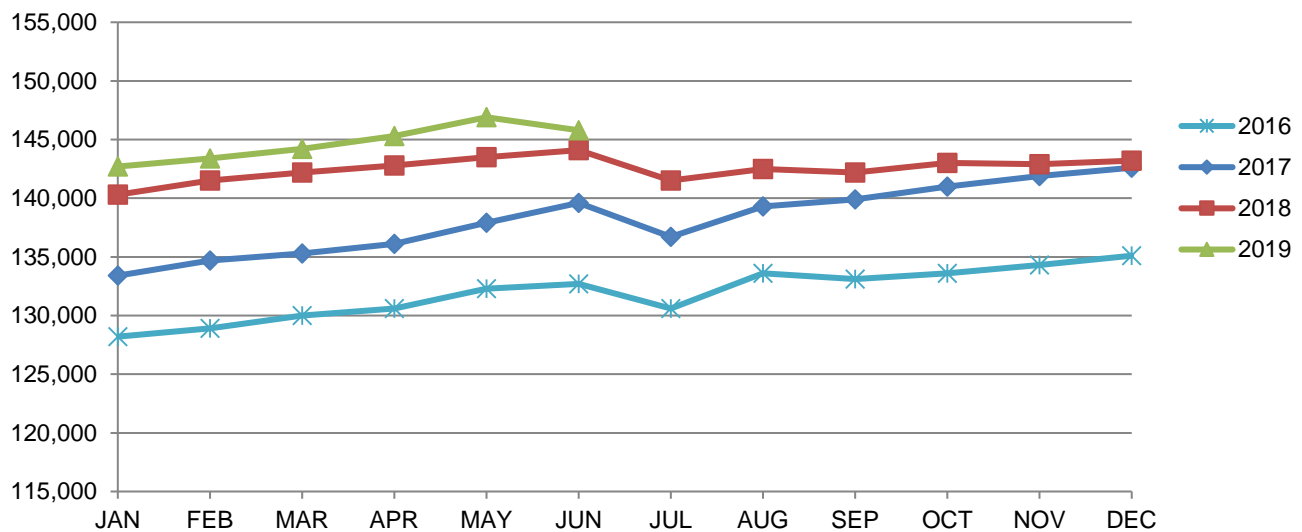
06/29/19 - 12,463

(D) Indicates one or more counties are excluded due to non-disclosure issues | Source: Indiana Department of Workforce Development, Research and Analysis

Elkhart-Goshen MSA							
Wage and Salaried Employment	June 2019			# Change	% Change	# Change	% Change
Industry	Jun-19	May-19	Jun-18	May-19 to Jun-19		Jun-18 to Jun-19	
<b>Total Nonfarm</b>	<b>144,900</b>	<b>144,300</b>	<b>144,100</b>	<b>600</b>	<b>0.4%</b>	<b>800</b>	<b>0.6%</b>
<b>Total Private</b>	<b>136,400</b>	<b>135,400</b>	<b>135,300</b>	<b>1,000</b>	<b>0.7%</b>	<b>1,100</b>	<b>0.8%</b>
Goods Producing	75,700	75,400	75,800	300	0.4%	-100	-0.1%
Service-Providing	69,200	68,900	68,300	300	0.4%	900	1.3%
Private Service Providing	60,700	60,000	59,500	700	1.2%	1,200	2.0%
Mining, Logging and Construction	4,400	4,300	4,100	100	2.3%	300	7.3%
Manufacturing	71,300	71,100	71,700	200	0.3%	-400	-0.6%
Durable Goods	59,400	59,100	61,200	300	0.5%	-1,800	-2.9%
Transportation Equipment Manufacturing	35,300	35,400	37,700	-100	-0.3%	-2,400	-6.4%
Motor Vehicle Body and Trailer Manufacturing	30,200	30,200	31,800	0	0.0%	-1,600	-5.0%
Trade, Transportation, and Utilities	20,700	20,500	20,700	200	1.0%	0	0.0%
Wholesale Trade	7,400	7,300	7,200	100	1.4%	200	2.8%
Retail Trade	9,700	9,600	10,000	100	1.0%	-300	-3.0%
Transportation, Warehousing, and Utilities	3,600	3,600	3,500	0	0.0%	100	2.9%
Information	400	400	400	0	0.0%	0	0.0%
Financial Activities	3,000	2,900	3,000	100	3.5%	0	0.0%
Professional and Business Services	11,400	11,100	11,100	300	2.7%	300	2.7%
Education and Health Services	12,400	12,400	12,100	0	0.0%	300	2.5%
Leisure and Hospitality	8,600	8,500	8,100	100	1.2%	500	6.2%
Other Services	4,200	4,200	4,100	0	0.0%	100	2.4%
<b>Government</b>	<b>8,500</b>	<b>8,900</b>	<b>8,800</b>	<b>-400</b>	<b>-4.5%</b>	<b>-300</b>	<b>-3.4%</b>
Federal Government	300	300	300	0	0.0%	0	0.0%
State Government	400	400	300	0	0.0%	100	33.3%
Local Government	7,800	8,200	8,200	-400	-4.9%	-400	-4.9%
Local Government Educational Services	5,200	5,600	5,400	-400	-7.1%	-200	-3.7%

Source: Indiana Dept of Workforce Development, Research and Analysis, Current Employment Statistics

### Elkhart-Goshen MSA Employment Trends

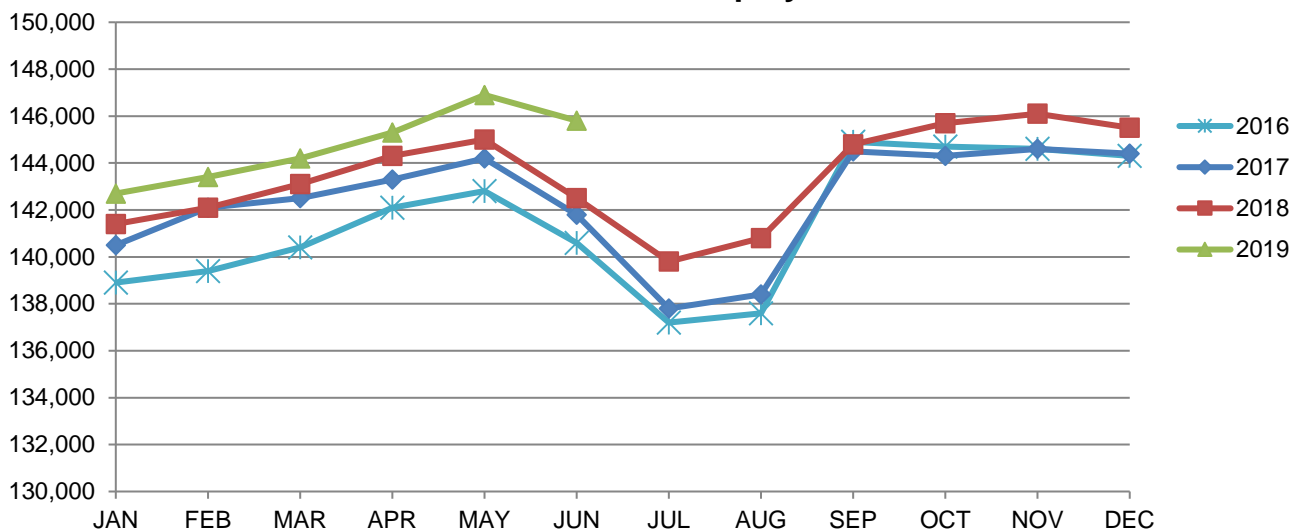


Source: Indiana Department of Workforce Development, Research & Analysis, Current Employment Statistics | Note: Historical data for the most recent 4 years (both seasonally adjusted and not seasonally adjusted) are revised near the beginning of each calendar year, prior to the release of January estimates for statewide data.

South Bend-Mishawaka MSA							
Wage and Salaried Employment	June 2019			# Change	% Change	# Change	% Change
Industry	Jun-19	May-19	Jun-18	May-19 to Jun-19		Jun-18 to Jun-19	
<b>Total Nonfarm</b>	<b>145,800</b>	<b>146,900</b>	<b>142,500</b>	<b>-1,100</b>	<b>-0.8%</b>	<b>3,300</b>	<b>2.3%</b>
<b>Total Private</b>	<b>130,000</b>	<b>130,800</b>	<b>126,900</b>	<b>-800</b>	<b>-0.6%</b>	<b>3,100</b>	<b>2.4%</b>
Goods Producing	25,200	24,600	24,000	600	2.4%	1,200	5.0%
Service Providing	120,600	122,300	118,500	-1,700	-1.4%	2,100	1.8%
Private Service Providing	104,800	106,200	102,900	-1,400	-1.3%	1,900	1.9%
Mining, Logging and Construction	6,800	6,400	6,100	400	6.3%	700	11.5%
Manufacturing	18,400	18,200	17,900	200	1.1%	500	2.8%
Trade, Transportation and Utilities	25,600	25,500	26,000	100	0.4%	-400	-1.5%
Wholesale Trade	6,900	6,900	6,700	0	0.0%	200	3.0%
Retail Trade	14,300	14,200	14,900	100	0.7%	-600	-4.0%
General Merchandise Stores	3,600	3,500	3,500	100	2.9%	100	2.9%
Transportation, Warehousing and Utilities	4,400	4,400	4,400	0	0.0%	0	0.0%
Information	1,500	1,400	1,500	100	7.1%	0	0.0%
Financial Activities	5,600	5,500	5,700	100	1.8%	-100	-1.8%
Professional & Business Services	14,000	13,900	14,000	100	0.7%	0	0.0%
Educational & Health Services	35,200	37,400	33,700	-2,200	-5.9%	1,500	4.5%
Hospitals	6,500	6,500	6,300	0	0.0%	200	3.2%
Leisure & Hospitality	15,900	15,500	15,100	400	2.6%	800	5.3%
Food Services and Drinking Places	11,800	11,700	11,600	100	0.9%	200	1.7%
Other Services	7,000	7,000	6,900	0	0.0%	100	1.5%
<b>Total Government</b>	<b>15,800</b>	<b>16,100</b>	<b>15,600</b>	<b>-300</b>	<b>-1.9%</b>	<b>200</b>	<b>1.3%</b>
Federal Government	1,000	900	900	100	11.1%	100	11.1%
State Government	2,400	2,700	2,400	-300	-11.1%	0	0.0%
Local Government	12,400	12,500	12,300	-100	-0.8%	100	0.8%
Local Government Educational Services	6,700	7,000	6,700	-300	-4.3%	0	0.0%

Source: Indiana Dept of Workforce Development, Research and Analysis, Current Employment Statistics

### South Bend-Mishawaka MSA Employment Trends



Source: Indiana Department of Workforce Development, Research & Analysis, Current Employment Statistics | Note: Historical data for the most recent 4 years (both seasonally adjusted and not seasonally adjusted) are revised near the beginning of each calendar year, prior to the release of January estimates for statewide data.

Frequently Listed Jobs	
Top 20 job listings by number of openings in Region 2 in the past month	
Rank	Occupations
1	Laborers and Freight, Stock, and Material Movers, Hand
2	Personal Care Aides
3	Production Workers, All Other
4	Registered Nurses
5	Customer Service Representatives
6	Nursing Assistants
7	Engineers, All Other
8	Electricians
9	Retail Salespersons
10	Construction Carpenters
11	Managers, All Other
12	Sheet Metal Workers
13	Security Guards
14	Stock Clerks, Sales Floor
15	Heavy and Tractor-Trailer Truck Drivers
16	Medical Secretaries
17	Combined Food Preparation and Serving Workers, Including Fast Food
18	Construction Laborers
19	Accountants
20	Driver/Sales Workers

Source: Indiana Workforce Development, Indiana Career Connect

Applicant Pool	
Top 20 occupations desired by applicants on their resumes in the past 12 months	
Occupations	# of applicants
Production Workers, All Other	720
Assemblers and Fabricators, All Other	467
Helpers--Production Workers	359
Customer Service Representatives	239
Laborers and Freight, Stock, and Material Movers, Hand	183
Cashiers	177
Office Clerks, General	141
First-Line Supervisors of Production and Operating Workers	132
Stock Clerks and Order Fillers	127
Office and Administrative Support Workers, All Other	116
Welders, Cutters, Solderers, and Brazers	116
Shipping, Receiving, and Traffic Clerks	110
Nursing Assistants	109
Team Assemblers	108
Retail Salespersons	101
Receptionists and Information Clerks	99
Inspectors, Testers, Sorters, Samplers, and Weighers	91
Administrative Services Managers	90
Managers, All Other	87
Industrial Truck and Tractor Operators	84

Source: Indiana Workforce Development, Indiana Career Connect



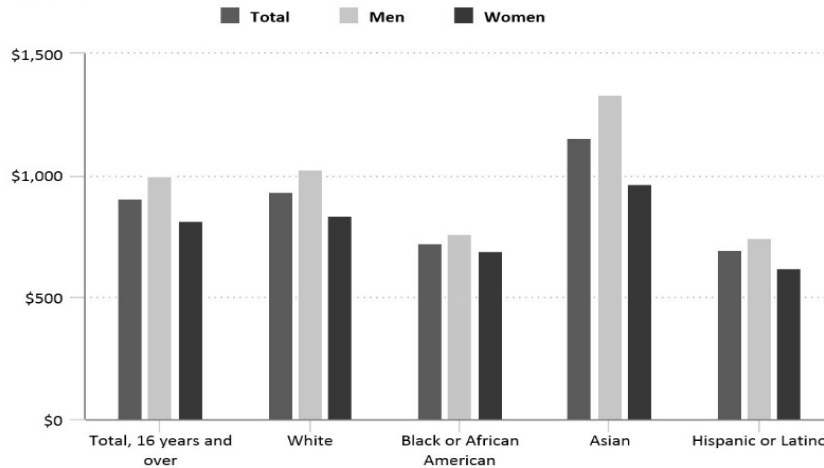
Statewide Average Weekly Hours & Earnings by Industry for June 2019			
Industry	Average Earnings (per hour)	Average # of hours worked (weekly)	Average Earnings (per week)
Construction	\$26.44	41.2	\$1,089.33
Manufacturing	\$21.55	42.7	\$920.19
Durable Goods	\$22.36	43.3	\$968.19
Fabricated Metal Product Manufacturing	\$17.63	41.8	\$736.93
Transportation Equipment Manufacturing	\$26.12	43.4	\$1,133.61
Non-Durable Goods	\$19.40	41.2	\$799.28
Retail Trade	\$14.77	30.5	\$450.49
Financial Activities	\$22.82	36.2	\$826.08
Health Care and Social Assistance	\$22.73	32.8	\$745.54
Accommodation and Food Services	\$12.19	24.6	\$299.87
Food Services and Drinking Places	\$11.74	23.6	\$277.06

Source: Indiana Department of Workforce Development, Current Employment Statistics

## Median weekly earnings for second quarter 2019 increased by 3.7 percent over the year

Median weekly earnings of the nation's 117.6 million full-time wage and salary workers were \$908 in the second quarter of 2019. This was 3.7 percent higher than a year earlier, compared with a gain of 1.8 percent in the Consumer Price Index for All Urban Consumers (CPI-U) over the same period. Median weekly earnings for women were \$814, or 81.4 percent of the median of \$1,000 for men.

**Median usual weekly earnings of full-time wage and salary workers, by race, Hispanic or Latino ethnicity, and sex, second quarter 2019, not seasonally adjusted**



Source: U.S. Bureau of Labor Statistics.

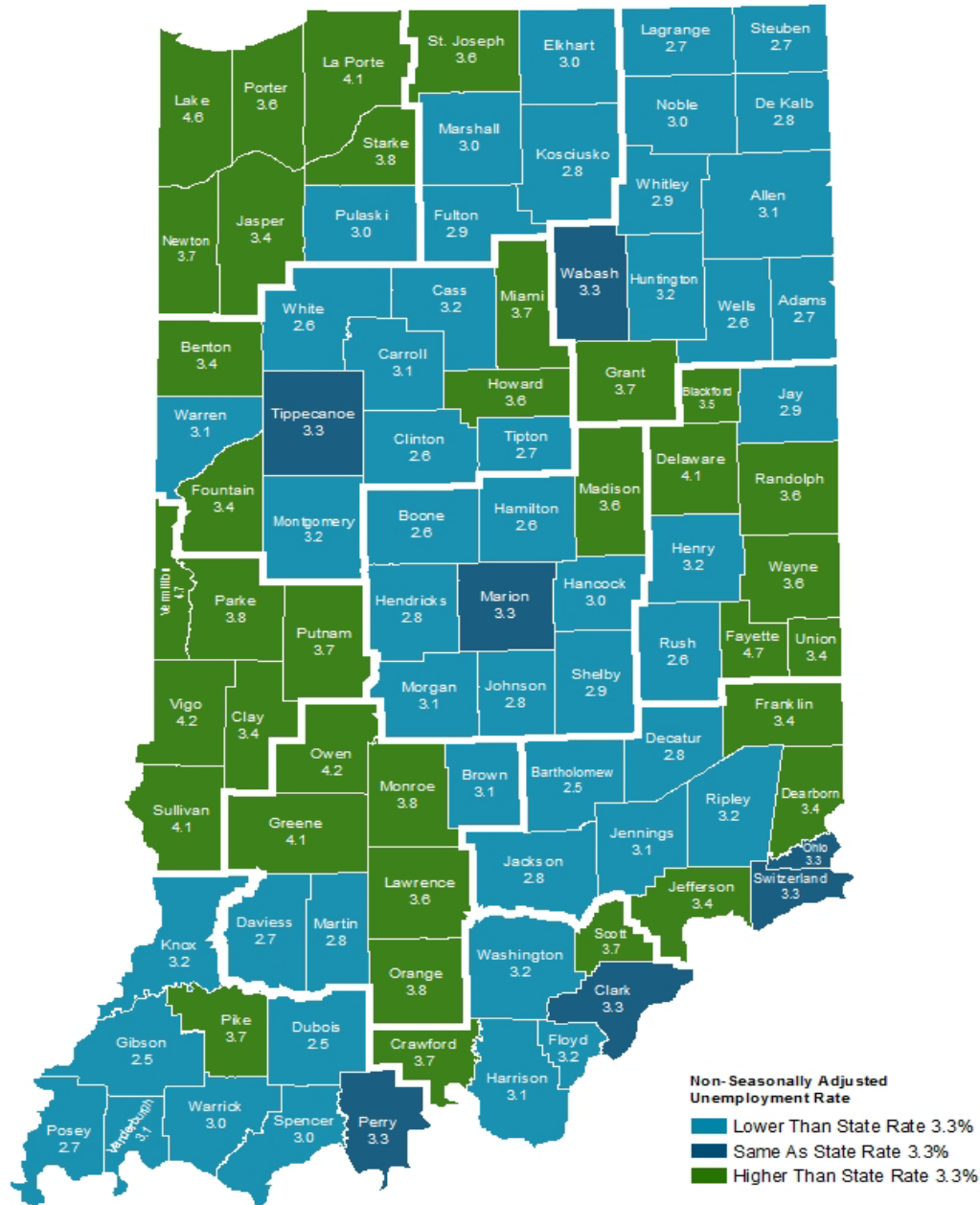
The women's-to-men's earnings ratio varied by race and ethnicity. White women earned 81.4 percent as much as their male counterparts, compared with 90.8 percent for Black women, 72.5 percent for Asian women, and 83.2 percent for Hispanic women.

Median weekly earnings of Blacks (\$724) and Hispanics (\$696) working at full-time jobs were lower than those of Whites (\$933) and Asians (\$1,152). Median weekly earnings for Black men were \$761, or 74.2 percent of the median for White men (\$1,026). Median earnings for Hispanic men were \$746, or 72.7 percent of the median for White men. The difference was less among women, as Black women's median earnings were \$691, or 82.8 percent of those for White women (\$835), and earnings for Hispanic women were \$621, or 74.4 percent of those for White women. Earnings of Asian men (\$1,331) and women (\$965) were higher than those for White men and women.

These data are from the Current Population Survey and are not seasonally adjusted. For more information, see "Usual Weekly Earnings of Wage and Salary Workers: Second Quarter 2019." We also have more charts on usual weekly earnings. Full-time workers usually work 35 hours or more per week at their sole or main job. The median is the midpoint in the earnings distribution; half of workers earn more than the median and half earn less. People whose ethnicity is Hispanic or Latino may be of any race. Bureau of Labor Statistics, U.S. Department of Labor, The Economics Daily, Median weekly earnings for second quarter 2019 increased by 3.7 percent over the year on the Internet at <https://www.bls.gov/opub/ted/2019/median-weekly-earnings-for-second-quarter-2019-increased-by-3-point-7-percent-over-the-year.htm> (visited July 23, 2019).



## County Unemployment Rates June 2019



Indiana Non-Seasonally Adjusted Rate 3.3%  
Indiana Seasonally Adjusted Rate 3.5%  
Source: DWD, Local Area Unemployment Statistics

### Questions?

Please contact the DWD  
Research and Analysis  
Regional Labor Analyst  
listed below:

Kathy Jaworski  
Regional Labor Analyst  
Research and Analysis

[Indiana Department of  
Workforce Development](https://www.in.gov/dwd/)

219-841-6347

[kjaworski@dwd.in.gov](mailto:kjaworski@dwd.in.gov)