



HOOSIERS BY THE NUMBERS

Your premier source for labor market information for Indiana.



INDIANA
DEPARTMENT OF
WORKFORCE
DEVELOPMENT

LABOR MARKET REVIEW



April 2019 Labor Market Review

Reported by: Kathy Jaworski

Regional Workforce Analyst

[Email Kathy](#)

kjaworski@dwd.in.gov

Tel: 219-841-6347



INDIANA
DEPARTMENT OF
WORKFORCE
DEVELOPMENT

LABOR MARKET REVIEW

Economic Growth Region 2

Statistical Data Report for April 2019, Released June 2019

State Employment and Unemployment

Unemployment rates were lower in April in 10 states and stable in 40 states and the District of Columbia, the U.S. Bureau of Labor Statistics reported. Four states had jobless rate decreases from a year earlier, 1 state had an increase, and 45 states and the District had little or no change. The national unemployment rate declined by 0.2 percentage point from March to 3.6 percent and was 0.3 point lower than in April 2018.

Vermont had the lowest unemployment rate in April, 2.2 percent. The rates in Pennsylvania (3.8 percent), Vermont (2.2 percent), and Wisconsin (2.8 percent) set new series lows. (All state series begin in 1976.) Alaska had the highest jobless rate, 6.5 percent. In total, 12 states had unemployment rates lower than the U.S. figure of 3.6 percent, 11 states and the District of Columbia had higher rates, and 27 states had rates that were not appreciably different from that of the nation.

Nonfarm payroll employment increased in 10 states in April 2019, decreased in 1 state, and was essentially unchanged in 39 states and the District of Columbia. Over the year, 29 states added nonfarm payroll jobs and 21 states and the District were essentially unchanged. Twenty-nine states had over-the-year increases in nonfarm payroll employment in April.



Economic Growth Region (EGR) 2

Elkhart, Fulton, Kosciusko, Marshall and St. Joseph Counties

Unemployment Rates by State (seasonally adjusted): April 2019

U.S. - 3.6%

Illinois - 4.4%

Indiana - 3.6%

Kentucky - 4%

Michigan - 4.1%

Ohio - 4.3%

Source: U.S. Department of Labor, Bureau of Labor Statistics

Unemployment Rank by County (of 92 counties): April 2019

#30 - St. Joseph (3.2%)

#52 - Marshall (2.8%)

#59 - Fulton (2.7%)

#65 - Elkhart (2.6%)

#87 - Kosciusko (2.3%)

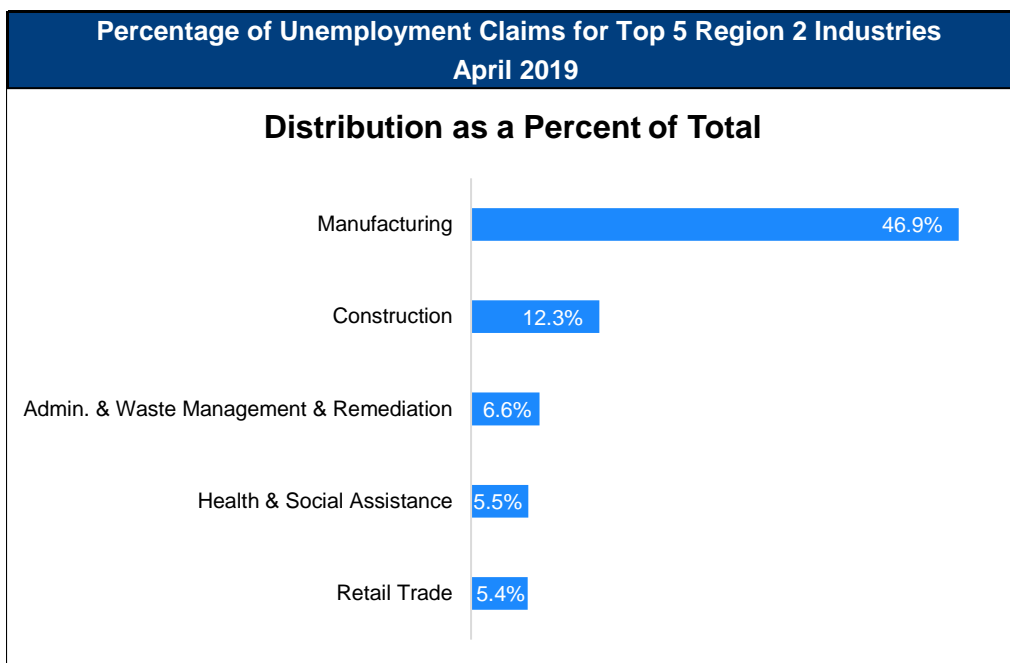
Source: Indiana Department of Workforce Development, Research and Development, Local Area Unemployment Statistics

April 2019 Labor Force Estimates (not seasonally adjusted)						
Area	Labor Force	Employed	Unemployed	Apr-19	Mar-19	Apr-18
U.S.	162,097,000	156,710,000	5,387,000	3.3%	3.9%	3.7%
IN	3,406,916	3,302,940	103,976	3.1%	3.9%	3.1%
EGR 2	332,045	322,736	9,309	2.8%	3.6%	2.7%
Elkhart-Goshen MSA	117,259	114,236	3,023	2.6%	3.2%	2.1%
South Bend-Mishawaka MSA	163,616	158,318	5,298	3.2%	4.1%	3.2%
Elkhart Co.	117,259	114,236	3,023	2.6%	3.2%	2.1%
Fulton Co.	9,804	9,538	266	2.7%	4.0%	3.0%
Kosciusko Co.	43,406	42,404	1,002	2.3%	3.0%	2.3%
Marshall Co.	22,796	22,152	644	2.8%	3.7%	2.8%
St Joseph Co.	138,780	134,406	4,374	3.2%	4.0%	3.2%
Elkhart	27,538	26,617	921	3.3%	4.0%	2.4%
Goshen	18,199	17,743	456	2.5%	3.1%	2.1%
Mishawaka	26,766	25,897	869	3.2%	3.9%	3.0%
Plymouth	4,270	4,130	140	3.3%	4.6%	3.9%
South Bend	49,115	47,417	1,698	3.5%	4.3%	3.5%
Warsaw	7,888	7,690	198	2.5%	2.9%	2.5%

Source: Indiana Department of Workforce Development, Research & Analysis, Local Area Unemployment Statistics | Unemployment Statistics Released:06/19 | Notes: The data displayed are presented as estimates only. The most recent month's data are always preliminary and are revised when the next month's data are released.

Consumer Price Index (CPI-U Change), Unadjusted Percent Change to April 2019 from				
CPI Item	Apr-18	Mar-19	Apr-18	Mar-19
	U.S. City		Midwest Region*	
All Items	2.0%	0.5%	1.5%	0.3%
Food & Beverages	1.7%	0.0%	0.8%	-0.1%
Housing	2.9%	0.2%	2.8%	0.1%
Apparel	-3.0%	-0.2%	-3.3%	-1.5%
Transportation	1.6%	2.5%	2.1%	2.2%
Medical Care	1.9%	0.2%	1.1%	-0.7%
Recreation	1.6%	0.1%	-1.1%	-0.2%
Education & Communication	0.9%	0.1%	0.0%	0.0%
Other Goods & Services	1.4%	0.0%	1.6%	0.3%

*Midwest region = Midwest Urban Average. Midwest Region includes Illinois, Indiana, Iowa, Kansas, Michigan, Minnesota, Missouri, Nebraska, North Dakota, Ohio, South Dakota and Wisconsin | Source: U.S. Bureau of Labor Statistics



Source: Indiana Department of Workforce Development, Research and Analysis

WARN Notices

WARN Notices for Region 2 for April 2019				
Company	City	County	# affected	Notice Date

There are no WARN Notices for April 2019 for Region 2.

Source: Indiana Department of Workforce Development, WARN Notices | For information on WARN Act requirements, you may go to the U.S. Department of Labor Employment Training Administration Fact Sheet:

<https://www.doleta.gov/programs/factsht/warn.htm>

Unemployment Claims: April 2019

Region 2

Initial Claims

04/06/19 - 243(D)

04/13/19 - 243(D)

04/20/19 - 212(D)

04/27/19 - 374(D)

Continued Claims

04/06/19 - 1,442

04/13/19 - 1,378

04/20/19 - 1,677

04/27/19 - 1,401

Total Claims

04/06/19 - 1,685

04/13/19 - 1,621

04/20/19 - 1,889

04/27/19 - 1,775

State of Indiana

Initial Claims

04/06/19 - 2,788

04/13/19 - 2,117

04/20/19 - 2,489

04/27/19 - 1,928

Continued Claims

04/06/19 - 13,347

04/13/19 - 13,906

04/20/19 - 13,898

04/27/19 - 11,726

Total Claims

04/06/19 - 16,135

04/13/19 - 16,023

04/20/19 - 16,387

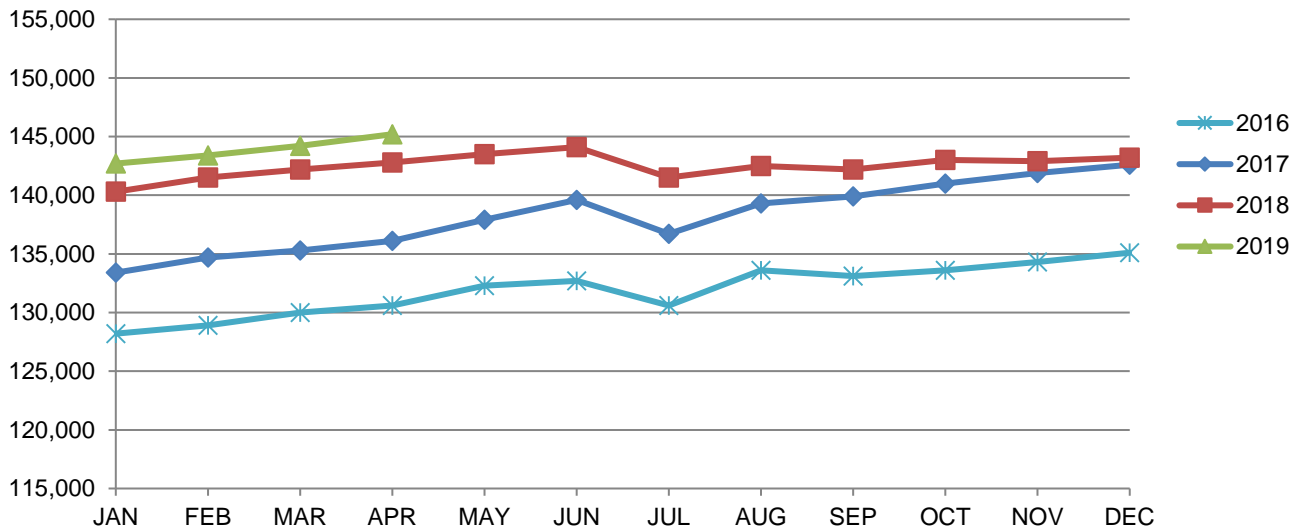
04/27/19 - 13,654

(D) Indicates one or more counties are excluded due to non-disclosure issues | Source: Indiana Department of Workforce Development, Research and Analysis

Elkhart-Goshen MSA							
Wage and Salaried Employment	April 2019			# Change	% Change	# Change	% Change
Industry	Apr-19	Mar-19	Apr-18	Mar-19 to Apr-19		Apr-18 to Apr-19	
Total Nonfarm	142,700	142,100	142,800	600	0.4%	-100	-0.1%
Total Private	133,900	133,100	133,800	800	0.6%	100	0.1%
Goods Producing	75,000	74,700	75,600	300	0.4%	-600	-0.8%
Service-Providing	67,700	67,400	67,200	300	0.5%	500	0.7%
Private Service Providing	58,900	58,400	58,200	500	0.9%	700	1.2%
Mining, Logging and Construction	4,000	3,800	3,800	200	5.3%	200	5.3%
Manufacturing	71,000	70,900	71,800	100	0.1%	-800	-1.1%
Durable Goods	59,300	59,100	61,300	200	0.3%	-2,000	-3.3%
Transportation Equipment Manufacturing	35,800	36,000	38,200	-200	-0.6%	-2,400	-6.3%
Motor Vehicle Body and Trailer Manufacturing	30,600	30,500	32,400	100	0.3%	-1,800	-5.6%
Trade, Transportation, and Utilities	20,200	20,100	20,200	100	0.5%	0	0.0%
Wholesale Trade	7,200	7,200	6,900	0	0.0%	300	4.4%
Retail Trade	9,500	9,400	9,800	100	1.1%	-300	-3.1%
Transportation, Warehousing, and Utilities	3,500	3,500	3,500	0	0.0%	0	0.0%
Information	400	400	400	0	0.0%	0	0.0%
Financial Activities	2,900	2,900	2,900	0	0.0%	0	0.0%
Professional and Business Services	10,900	10,800	10,900	100	0.9%	0	0.0%
Education and Health Services	12,300	12,300	12,200	0	0.0%	100	0.8%
Leisure and Hospitality	8,000	7,700	7,500	300	3.9%	500	6.7%
Other Services	4,200	4,200	4,100	0	0.0%	100	2.4%
Government	8,800	9,000	9,000	-200	-2.2%	-200	-2.2%
Federal Government	300	300	300	0	0.0%	0	0.0%
State Government	400	400	400	0	0.0%	0	0.0%
Local Government	8,100	8,300	8,300	-200	-2.4%	-200	-2.4%
Local Government Educational Services	5,500	5,700	5,700	-200	-3.5%	-200	-3.5%

Source: Indiana Dept of Workforce Development, Research and Analysis, Current Employment Statistics

Elkhart-Goshen MSA Employment Trends

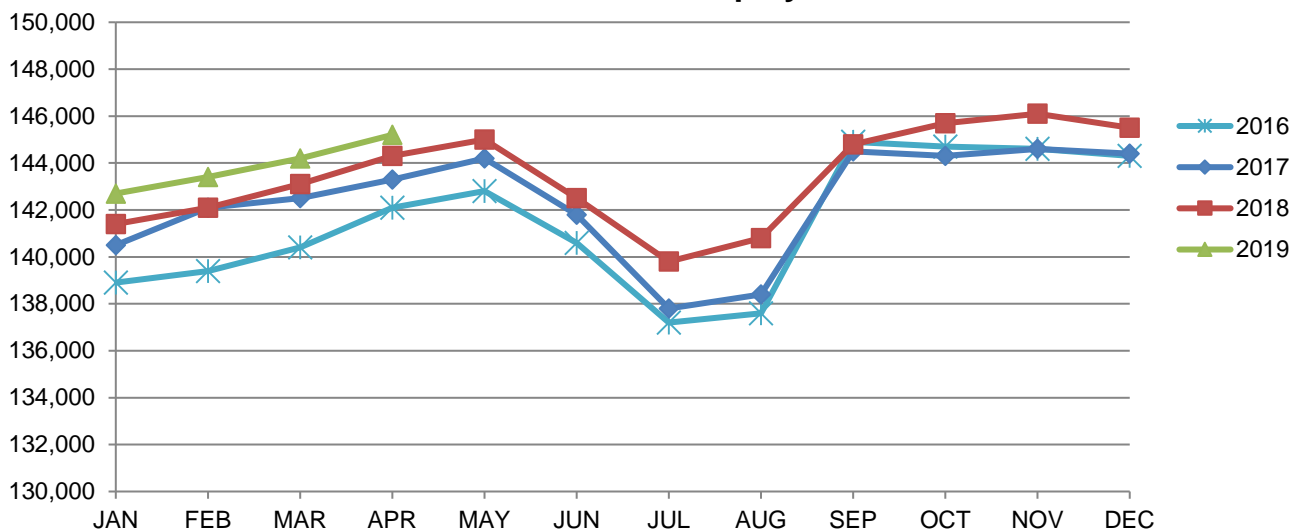


Source: Indiana Department of Workforce Development, Research & Analysis, Current Employment Statistics | Note: Historical data for the most recent 4 years (both seasonally adjusted and not seasonally adjusted) are revised near the beginning of each calendar year, prior to the release of January estimates for statewide data.

South Bend-Mishawaka MSA							
Wage and Salaried Employment	April 2019			# Change	% Change	# Change	% Change
Industry	Apr-19	Mar-19	Apr-18	Mar-19 to Apr-19		Apr-18 to Apr-19	
Total Nonfarm	145,200	144,200	144,300	1,000	0.7%	900	0.6%
Total Private	129,000	128,000	128,700	1,000	0.8%	300	0.2%
Goods Producing	24,100	23,800	23,100	300	1.3%	1,000	4.3%
Service Providing	121,100	120,400	121,200	700	0.6%	-100	-0.1%
Private Service Providing	104,900	104,200	105,600	700	0.7%	-700	-0.7%
Mining, Logging and Construction	6,100	5,800	5,300	300	5.2%	800	15.1%
Manufacturing	18,000	18,000	17,800	0	0.0%	200	1.1%
Trade, Transportation and Utilities	25,200	25,300	25,400	-100	-0.4%	-200	-0.8%
Wholesale Trade	6,800	6,800	6,500	0	0.0%	300	4.6%
Retail Trade	14,100	14,200	14,600	-100	-0.7%	-500	-3.4%
General Merchandise Stores	3,500	3,500	3,400	0	0.0%	100	2.9%
Transportation, Warehousing and Utilities	4,300	4,300	4,300	0	0.0%	0	0.0%
Information	1,400	1,500	1,400	-100	-6.7%	0	0.0%
Financial Activities	5,500	5,500	5,500	0	0.0%	0	0.0%
Professional & Business Services	13,800	13,400	13,900	400	3.0%	-100	-0.7%
Educational & Health Services	37,000	37,000	37,600	0	0.0%	-600	-1.6%
Hospitals	6,500	6,500	6,100	0	0.0%	400	6.6%
Leisure & Hospitality	15,100	14,600	15,000	500	3.4%	100	0.7%
Food Services and Drinking Places	11,600	11,300	11,600	300	2.7%	0	0.0%
Other Services	6,900	6,900	6,800	0	0.0%	100	1.5%
Total Government	16,200	16,200	15,600	0	0.0%	600	3.9%
Federal Government	900	900	900	0	0.0%	0	0.0%
State Government	2,700	2,700	2,700	0	0.0%	0	0.0%
Local Government	12,600	12,600	12,000	0	0.0%	600	5.0%
Local Government Educational Services	7,100	7,200	6,900	-100	-1.4%	200	2.9%

Source: Indiana Dept of Workforce Development, Research and Analysis, Current Employment Statistics

South Bend-Mishawaka MSA Employment Trends



Source: Indiana Department of Workforce Development, Research & Analysis, Current Employment Statistics | Note: Historical data for the most recent 4 years (both seasonally adjusted and not seasonally adjusted) are revised near the beginning of each calendar year, prior to the release of January estimates for statewide data.

Frequently Listed Jobs	
Top 20 job listings by number of openings in Region 2 in the past month	
Rank	Occupations
1	Production Workers, All Other
2	Heavy and Tractor-Trailer Truck Drivers
3	Home Health Aides
4	Assemblers and Fabricators, All Other
5	Helpers--Production Workers
6	First-Line Supervisors of Food Preparation and Serving Workers
7	Engineers, All Other
8	Light Truck or Delivery Services Drivers
9	Building Cleaning Workers, All Other
10	Maids and Housekeeping Cleaners
11	Teachers and Instructors, All Other
12	Laborers and Freight, Stock, and Material Movers, Hand
13	Retail Salespersons
14	Security Guards
15	Combined Food Preparation and Serving Workers, Including Fast Food
16	Material Moving Workers, All Other
17	Customer Service Representatives
18	Construction Laborers
19	Food Preparation Workers
20	Managers, All Other

Source: Indiana Workforce Development, Indiana Career Connect

Applicant Pool	
Top 20 occupations desired by applicants on their resumes in the past 12 months	
Occupations	# of applicants
Production Workers, All Other	876
Assemblers and Fabricators, All Other	559
Helpers--Production Workers	439
Customer Service Representatives	289
Laborers and Freight, Stock, and Material Movers, Hand	235
Cashiers	221
Office Clerks, General	186
Office and Administrative Support Workers, All Other	165
Stock Clerks and Order Fillers	157
First-Line Supervisors of Production and Operating Workers	149
Nursing Assistants	142
Receptionists and Information Clerks	137
Welders, Cutters, Solderers, and Brazers	137
Retail Salespersons	136
Team Assemblers	135
Shipping, Receiving, and Traffic Clerks	131
Administrative Services Managers	124
Managers, All Other	119
Industrial Truck and Tractor Operators	114
Packers and Packagers, Hand	113

Source: Indiana Workforce Development, Indiana Career Connect

Statewide Average Weekly Hours & Earnings by Industry for April 2019			
Industry	Average Earnings (per hour)	Average # of hours worked (weekly)	Average Earnings (per week)
Construction	\$26.67	39.9	\$1,064.13
Manufacturing	\$21.61	42.0	\$907.62
Durable Goods	\$22.28	42.7	\$951.36
Fabricated Metal Product Manufacturing	\$17.67	41.3	\$729.77
Transportation Equipment Manufacturing	\$25.87	45.0	\$1,164.15
Non-Durable Goods	\$19.80	40.3	\$797.94
Retail Trade	\$14.73	30.5	\$449.27
Financial Activities	\$23.38	35.3	\$825.31
Health Care and Social Assistance	\$22.70	33.1	\$751.37
Accommodation and Food Services	\$12.35	23.6	\$291.46
Food Services and Drinking Places	\$11.87	22.5	\$267.08

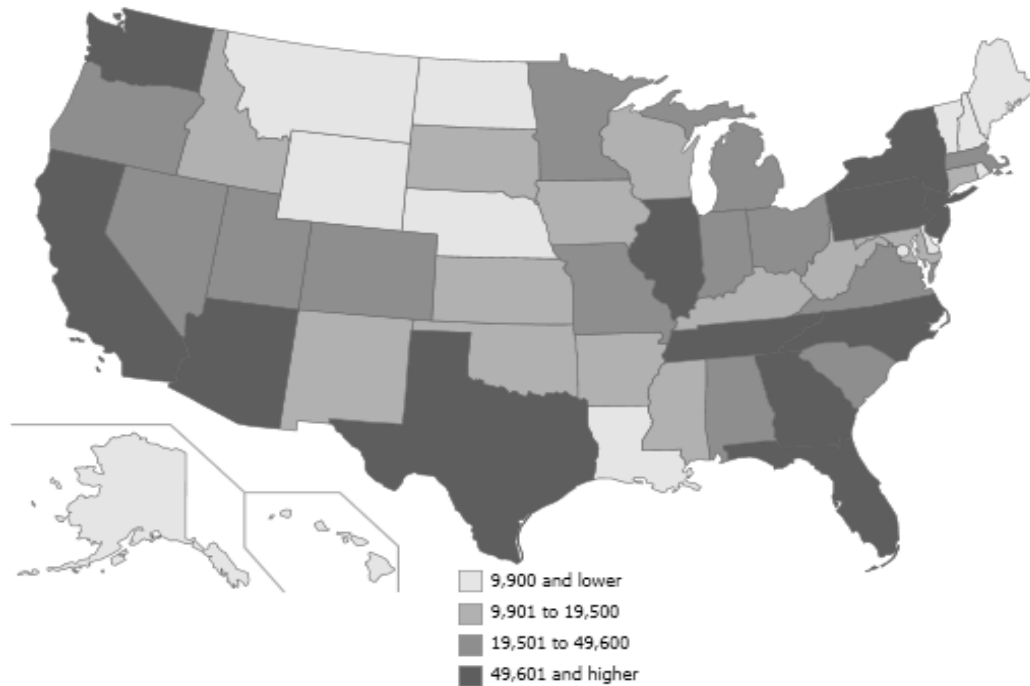
Source: Indiana Department of Workforce Development, Current Employment Statistics

Twenty-nine states had over-the-year increases in nonfarm payroll employment in April 2019

May 22, 2019

From April 2018 to April 2019, 29 states had over-the-year increases in nonfarm payroll employment. The largest job gains occurred in Texas (+294,200), California (+271,600), and Florida (+206,100).

Change in nonfarm payroll employment by state, seasonally adjusted, April 2018–April 2019



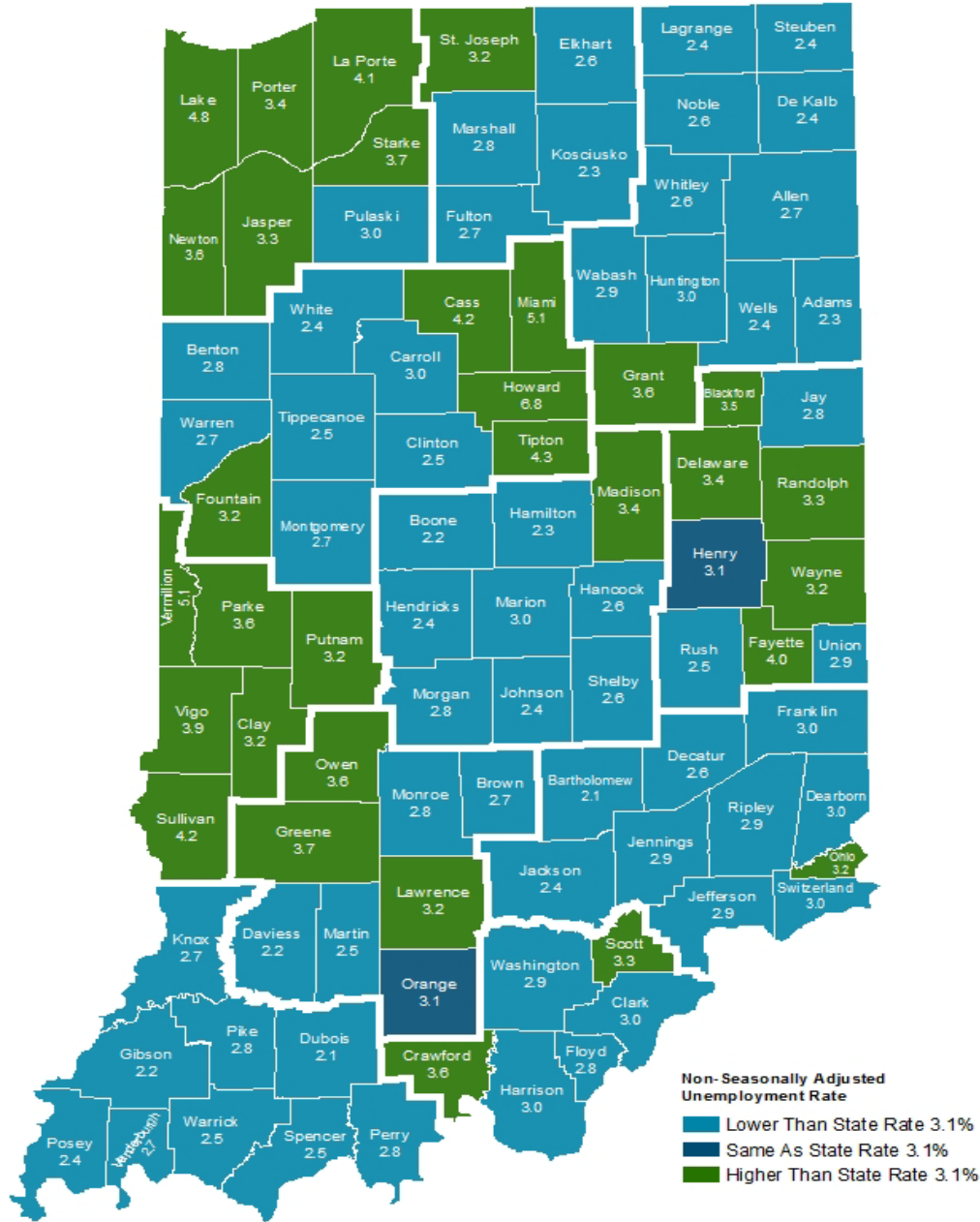
Source: U.S. Bureau of Labor Statistics.

The largest percentage gains occurred in Nevada (+3.6 percent), Utah (+3.0 percent) and Arizona (+2.8 percent). These data are from the Current Employment Statistics (State and Metro Area) program and are seasonally adjusted. Data for the most recent month are preliminary and subject to revision. To learn more, see “State Employment and Unemployment — April 2019.” For more charts and tables related to state employment and unemployment, see the state chart package.

Bureau of Labor Statistics, U.S. Department of Labor, *The Economics Daily*, Twenty-nine states had over-the-year increases in nonfarm payroll employment in April 2019 on the Internet at <https://www.bls.gov/opub/td/2019/twenty-nine-states-had-over-the-year-increases-in-nonfarm-payroll-employment-in-april-2019.htm> (visited May 22, 2019).



County Unemployment Rates April 2019



Questions?
Please contact the DWD
Research and Analysis
Regional Labor Analyst
listed below:

Kathy Jaworski
Regional Labor Analyst
Research and Analysis

Indiana Department of Workforce Development

219-841-6347

kjaworski@dwd.in.gov

Indiana Non-Seasonally Adjusted Rate 3.1%
Indiana Seasonally Adjusted Rate 3.6%
Source: DWD, Local Area Unemployment Statistics