



# HOOSIERS BY THE NUMBERS

Your premier source for labor market information for Indiana.



INDIANA  
DEPARTMENT OF  
**WORKFORCE**  
DEVELOPMENT

## LABOR MARKET REVIEW



## January 2019 Labor Market Review

Reported by: Kathy Jaworski

Regional Workforce Analyst

[Email Kathy](mailto:kjaworski@dwd.in.gov)

[kjaworski@dwd.in.gov](mailto:kjaworski@dwd.in.gov)

Tel: 219-841-6347



INDIANA  
DEPARTMENT OF  
**WORKFORCE**  
DEVELOPMENT

## LABOR MARKET REVIEW

# Economic Growth Region 2

Statistical Data Report for January 2019, Released March 2019

## State Employment and Unemployment

Unemployment rates were lower in January in 3 states, higher in 3 states, and stable in 44 states and the District of Columbia, the U.S. Bureau of Labor Statistics reported. Nine states had jobless rate decreases from a year earlier, 1 state had an increase, and 40 states and the District had little or no change. The national unemployment rate edged up to 4.0 percent over the month and was little changed from January 2018.

Nonfarm payroll employment increased in 13 states in January 2019 and was essentially unchanged in 37 states and the District of Columbia. The largest job gains occurred in North Carolina (+34,700), Illinois (+24,400), and Virginia (+23,700). In percentage terms, the largest increase occurred in West Virginia (+1.1 percent), followed by North Carolina (+0.8 percent), and Idaho, Maine, Oregon, and Virginia (+0.6 percent each).

Twenty-six states had over-the-year increases in nonfarm payroll employment in January. The largest job gains occurred in Texas (+292,000), California (+246,400), and Florida (+209,500). The largest percentage gain occurred in Nevada (+3.9 percent), followed by Utah (+3.4 percent) and Arizona (+2.8 percent).



## Economic Growth Region (EGR) 2

Elkhart, Fulton, Kosciusko, Marshall and St. Joseph Counties

### Unemployment Rates by State (seasonally adjusted): January 2019

U.S. - 4%

Illinois - 4.3%

**Indiana - 3.5%**

Kentucky - 4.2%

Michigan - 4%

Ohio - 4.7%

Source: U.S. Department of Labor, Bureau of Labor Statistics

### Unemployment Rank by County (of 92 counties): January 2019

#36 - Fulton (4.3%)

#43 - Marshall (4.2%)

#45 - St. Joseph (4.2%)

#64 - Elkhart (3.7%)

#75 - Kosciusko (3.5%)

Source: Indiana Department of Workforce Development, Research and Development, Local Area Unemployment Statistics

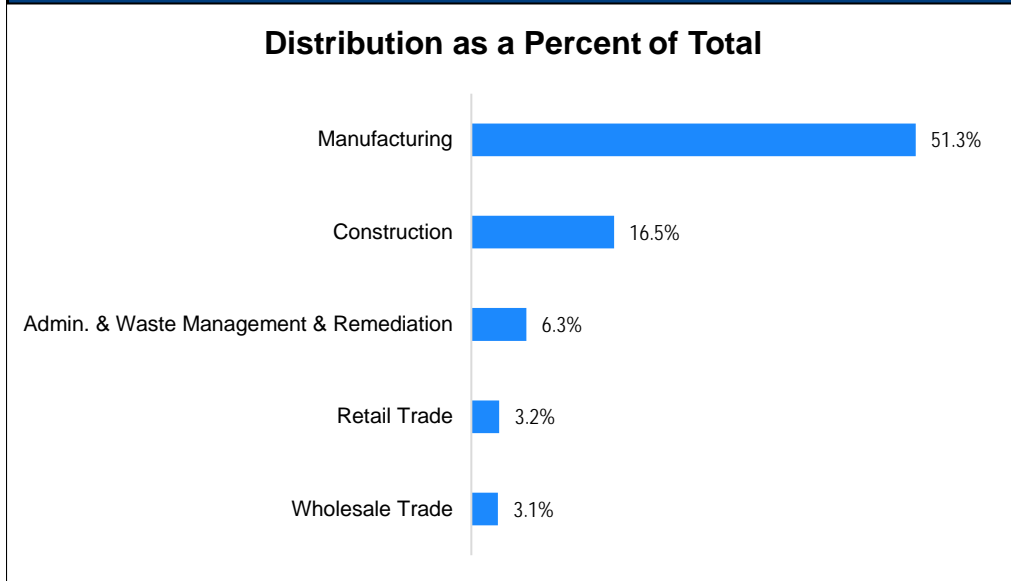
January 2019 Labor Force Estimates (not seasonally adjusted)						
Area	Labor Force	Employed	Unemployed	Jan-19	Dec-18	Jan-18
U.S.	162,104,000	154,964,000	7,140,000	4.4%	3.7%	4.5%
IN	3,390,894	3,252,471	138,423	4.1%	3.4%	3.6%
EGR 2	331,142	318,035	13,107	4.0%	3.2%	3.1%
Elkhart-Goshen MSA	117,468	113,095	4,373	3.7%	2.9%	2.5%
South Bend-Mishawaka MSA	162,226	155,228	6,998	4.3%	3.7%	3.9%
Elkhart Co.	117,468	113,095	4,373	3.7%	2.9%	2.5%
Fulton Co.	9,805	9,380	425	4.3%	3.3%	4.0%
Kosciusko Co.	42,955	41,451	1,504	3.5%	2.6%	2.7%
Marshall Co.	23,112	22,132	980	4.2%	3.1%	3.4%
St Joseph Co.	137,802	131,977	5,825	4.2%	3.6%	3.7%
Elkhart	27,602	26,352	1,250	4.5%	3.8%	2.8%
Goshen	18,279	17,566	713	3.9%	2.6%	2.4%
Mishawaka	26,464	25,429	1,035	3.9%	3.2%	3.4%
Plymouth	4,341	4,126	215	5.0%	3.5%	4.0%
South Bend	48,749	46,560	2,189	4.5%	4.1%	3.9%
Warsaw	7,816	7,517	299	3.8%	2.7%	2.8%

Source: Indiana Department of Workforce Development, Research & Analysis, Local Area Unemployment Statistics | Unemployment Statistics Released:03/19 | Notes: The data displayed are presented as estimates only. The most recent month's data are always preliminary and are revised when the next month's data are released.

Consumer Price Index (CPI-U Change), Unadjusted Percent Change to January 2019 from				
CPI Item	Jan-18	Dec-18	Jan-18	Dec-18
	U.S. City		Midwest Region*	
<b>All Items</b>	<b>1.6%</b>	<b>0.2%</b>	<b>0.8%</b>	<b>0.2%</b>
Food & Beverages	1.6%	0.5%	1.0%	0.5%
Housing	2.9%	0.4%	2.8%	0.3%
Apparel	0.1%	1.6%	-1.5%	1.3%
Transportation	-1.3%	-1.0%	-3.7%	-1.2%
Medical Care	1.9%	0.6%	2.4%	1.0%
Recreation	1.4%	0.5%	-0.9%	0.5%
Education & Communication	0.3%	0.1%	-0.1%	0.3%
Other Goods & Services	1.9%	0.2%	2.4%	-0.1%

\*Midwest region = Midwest Urban Average. Midwest Region includes Illinois, Indiana, Iowa, Kansas, Michigan, Minnesota, Missouri, Nebraska, North Dakota, Ohio, South Dakota and Wisconsin | Source: U.S. Bureau of Labor Statistics

### Percentage of Unemployment Claims for Top 5 Region 2 Industries January 2019



Source: Indiana Department of Workforce Development, Research and Analysis

## WARN Notices

WARN Notices for Region 2 for January 2019				
Company	City	County	# affected	Notice Date

**There are no WARN Notices for January 2019 for Region 2.**

Source: Indiana Department of Workforce Development, WARN Notices | For information on WARN Act requirements, you may go to the U.S. Department of Labor Employment Training Administration Fact Sheet:

<https://www.doleta.gov/programs/factsht/warn.htm>

## Unemployment Claims: January 2019

### Region 2

#### Initial Claims

01/05/19 - 447

01/12/19 - 499

01/19/19 - 378

01/26/19 - 345

#### Continued Claims

01/05/19 - 2,210

01/12/19 - 2,143

01/19/19 - 1,951

01/26/19 - 1,914

#### Total Claims

01/05/19 - 2,657

01/12/19 - 2,642

01/19/19 - 2,329

01/26/19 - 2,259

### State of Indiana

#### Initial Claims

01/05/19 - 4,309

01/12/19 - 4,575

01/19/19 - 3,536

01/26/19 - 3,121

#### Continued Claims

01/05/19 - 17,896

01/12/19 - 17,861

01/19/19 - 18,630

01/26/19 - 18,878

#### Total Claims

01/05/19 - 22,205

01/12/19 - 22,436

01/19/19 - 22,166

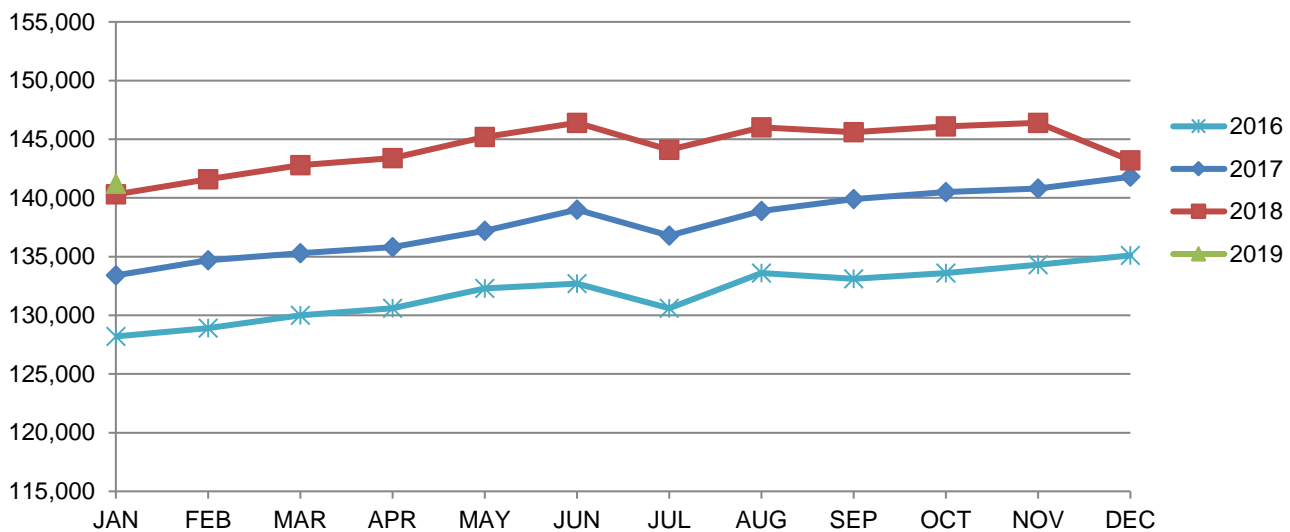
01/26/19 - 21,999

(D) Indicates one or more counties are excluded due to non-disclosure issues | Source: Indiana Department of Workforce Development, Research and Analysis

Elkhart-Goshen MSA							
Wage and Salaried Employment	January 2019			# Change	% Change	# Change	% Change
Industry	Jan-19	Dec-18	Jan-18	Dec-18 to Jan-19		Jan-18 to Jan-19	
<b>Total Nonfarm</b>	<b>141,200</b>	<b>143,200</b>	<b>140,300</b>	<b>-2,000</b>	<b>-1.4%</b>	<b>900</b>	<b>0.6%</b>
<b>Total Private</b>	<b>132,300</b>	<b>134,200</b>	<b>131,300</b>	<b>-1,900</b>	<b>-1.4%</b>	<b>1,000</b>	<b>0.8%</b>
Goods Producing	73,800	74,700	74,300	-900	-1.2%	-500	-0.7%
Service-Providing	67,400	68,500	66,000	-1,100	-1.6%	1,400	2.1%
Private Service Providing	58,500	59,500	57,000	-1,000	-1.7%	1,500	2.6%
Mining, Logging and Construction	3,800	4,000	3,400	-200	-5.0%	400	11.8%
Manufacturing	70,000	70,700	70,900	-700	-1.0%	-900	-1.3%
Durable Goods	59,200	59,500	60,600	-300	-0.5%	-1,400	-2.3%
Transportation Equipment Manufacturing	36,100	36,500	37,700	-400	-1.1%	-1,600	-4.2%
Motor Vehicle Body and Trailer Manufacturing	30,400	30,700	32,000	-300	-1.0%	-1,600	-5.0%
Trade, Transportation, and Utilities	20,500	20,900	19,900	-400	-1.9%	600	3.0%
Wholesale Trade	7,200	7,200	6,800	0	0.0%	400	5.9%
Retail Trade	9,800	10,100	9,700	-300	-3.0%	100	1.0%
Transportation, Warehousing, and Utilities	3,500	3,600	3,400	-100	-2.8%	100	2.9%
Information	400	400	400	0	0.0%	0	0.0%
Financial Activities	2,900	3,000	2,800	-100	-3.3%	100	3.6%
Professional and Business Services	10,600	10,600	10,700	0	0.0%	-100	-0.9%
Education and Health Services	12,300	12,500	11,900	-200	-1.6%	400	3.4%
Leisure and Hospitality	7,600	7,900	7,200	-300	-3.8%	400	5.6%
Other Services	4,200	4,200	4,100	0	0.0%	100	2.4%
<b>Government</b>	<b>8,900</b>	<b>9,000</b>	<b>9,000</b>	<b>-100</b>	<b>-1.1%</b>	<b>-100</b>	<b>-1.1%</b>
Federal Government	300	300	300	0	0.0%	0	0.0%
State Government	400	400	400	0	0.0%	0	0.0%
Local Government	8,200	8,300	8,300	-100	-1.2%	-100	-1.2%
Local Government Educational Services	5,600	5,700	5,700	-100	-1.8%	-100	-1.8%

Source: Indiana Dept of Workforce Development, Research and Analysis, Current Employment Statistics

### Elkhart-Goshen MSA Employment Trends

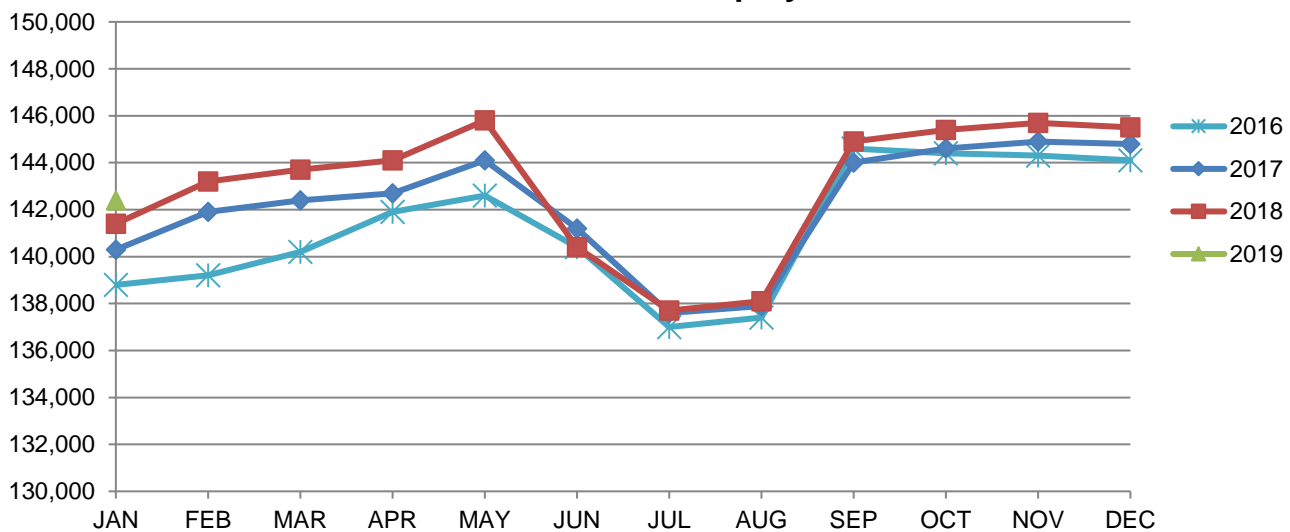


Source: Indiana Department of Workforce Development, Research & Analysis, Current Employment Statistics | Note: Historical data for the most recent 4 years (both seasonally adjusted and not seasonally adjusted) are revised near the beginning of each calendar year, prior to the release of January estimates for statewide data.

South Bend-Mishawaka MSA							
Wage and Salaried Employment	January 2019			# Change	% Change	# Change	% Change
Industry	Jan-19	Dec-18	Jan-18	Dec-18 to Jan-19	Jan-18 to Jan-19		
<b>Total Nonfarm</b>	<b>142,400</b>	<b>145,500</b>	<b>141,400</b>	<b>-3,100</b>	<b>-2.1%</b>	<b>1,000</b>	<b>0.7%</b>
<b>Total Private</b>	<b>126,400</b>	<b>129,200</b>	<b>125,900</b>	<b>-2,800</b>	<b>-2.2%</b>	<b>500</b>	<b>0.4%</b>
Goods Producing	23,400	24,100	22,700	-700	-2.9%	700	3.1%
Service Providing	119,000	121,400	118,700	-2,400	-2.0%	300	0.3%
Private Service Providing	103,000	105,100	103,200	-2,100	-2.0%	-200	-0.2%
Mining, Logging and Construction	5,700	5,800	4,900	-100	-1.7%	800	16.3%
Manufacturing	17,700	18,300	17,800	-600	-3.3%	-100	-0.6%
Trade, Transportation and Utilities	25,400	26,000	25,000	-600	-2.3%	400	1.6%
Wholesale Trade	6,700	6,800	6,400	-100	-1.5%	300	4.7%
Retail Trade	14,500	14,800	14,600	-300	-2.0%	-100	-0.7%
General Merchandise Stores	3,600	3,900	3,400	-300	-7.7%	200	5.9%
Transportation, Warehousing and Utilities	4,200	4,400	4,000	-200	-4.6%	200	5.0%
Information	1,500	1,500	1,500	0	0.0%	0	0.0%
Financial Activities	5,500	5,500	5,500	0	0.0%	0	0.0%
Professional & Business Services	13,200	13,800	13,500	-600	-4.4%	-300	-2.2%
Educational & Health Services	36,300	37,100	36,500	-800	-2.2%	-200	-0.6%
Hospitals	6,500	6,400	6,100	100	1.6%	400	6.6%
Leisure & Hospitality	14,300	14,400	14,500	-100	-0.7%	-200	-1.4%
Food Services and Drinking Places	11,000	11,400	11,200	-400	-3.5%	-200	-1.8%
Other Services	6,800	6,800	6,700	0	0.0%	100	1.5%
<b>Total Government</b>	<b>16,000</b>	<b>16,300</b>	<b>15,500</b>	<b>-300</b>	<b>-1.8%</b>	<b>500</b>	<b>3.2%</b>
Federal Government	900	1,000	1,000	-100	-10.0%	-100	-10.0%
State Government	2,600	2,700	2,600	-100	-3.7%	0	0.0%
Local Government	12,500	12,600	11,900	-100	-0.8%	600	5.0%
Local Government Educational Services	7,000	7,200	6,800	-200	-2.8%	200	2.9%

Source: Indiana Dept of Workforce Development, Research and Analysis, Current Employment Statistics

### South Bend-Mishawaka MSA Employment Trends



Source: Indiana Department of Workforce Development, Research & Analysis, Current Employment Statistics | Note: Historical data for the most recent 4 years (both seasonally adjusted and not seasonally adjusted) are revised near the beginning of each calendar year, prior to the release of January estimates for statewide data.

<b>Frequently Listed Jobs</b>	
<b>Top 20 job listings by number of openings in Region 2 in the past month</b>	
<b>Rank</b>	<b>Occupations</b>
1	Registered Nurses
2	Nursing Assistants
3	Production Workers, All Other
4	Licensed Practical and Licensed Vocational Nurses
5	Laborers and Freight, Stock, and Material Movers, Hand
6	Retail Salespersons
7	Home Health Aides
8	Cashiers
9	Security Guards
10	Janitors and Cleaners, Except Maids and Housekeeping Cleaners
11	Helpers--Production Workers
12	Maids and Housekeeping Cleaners
13	Engineers, All Other
14	Packers and Packagers, Hand
15	Heavy and Tractor-Trailer Truck Drivers
16	Stock Clerks- Stockroom, Warehouse, or Storage Yard
17	Healthcare Practitioners and Technical Workers, All Other
18	Stock Clerks, Sales Floor
19	Customer Service Representatives
20	First-Line Supervisors of Transportation and Material-Moving Machine and Vehicle Operators

Source: Indiana Workforce Development, Indiana Career Connect

<b>Applicant Pool</b>	
<b>Top 20 occupations desired by applicants on their resumes in the past 12 months</b>	
<b>Occupations</b>	<b># of applicants</b>
Production Workers, All Other	876
Assemblers and Fabricators, All Other	559
Helpers--Production Workers	439
Customer Service Representatives	289
Laborers and Freight, Stock, and Material Movers, Hand	235
Cashiers	221
Office Clerks, General	186
Office and Administrative Support Workers, All Other	165
Stock Clerks and Order Fillers	157
First-Line Supervisors of Production and Operating Workers	149
Nursing Assistants	142
Receptionists and Information Clerks	137
Welders, Cutters, Solderers, and Brazers	137
Retail Salespersons	136
Team Assemblers	135
Shipping, Receiving, and Traffic Clerks	131
Administrative Services Managers	124
Managers, All Other	119
Industrial Truck and Tractor Operators	114
Packers and Packagers, Hand	113

Source: Indiana Workforce Development, Indiana Career Connect

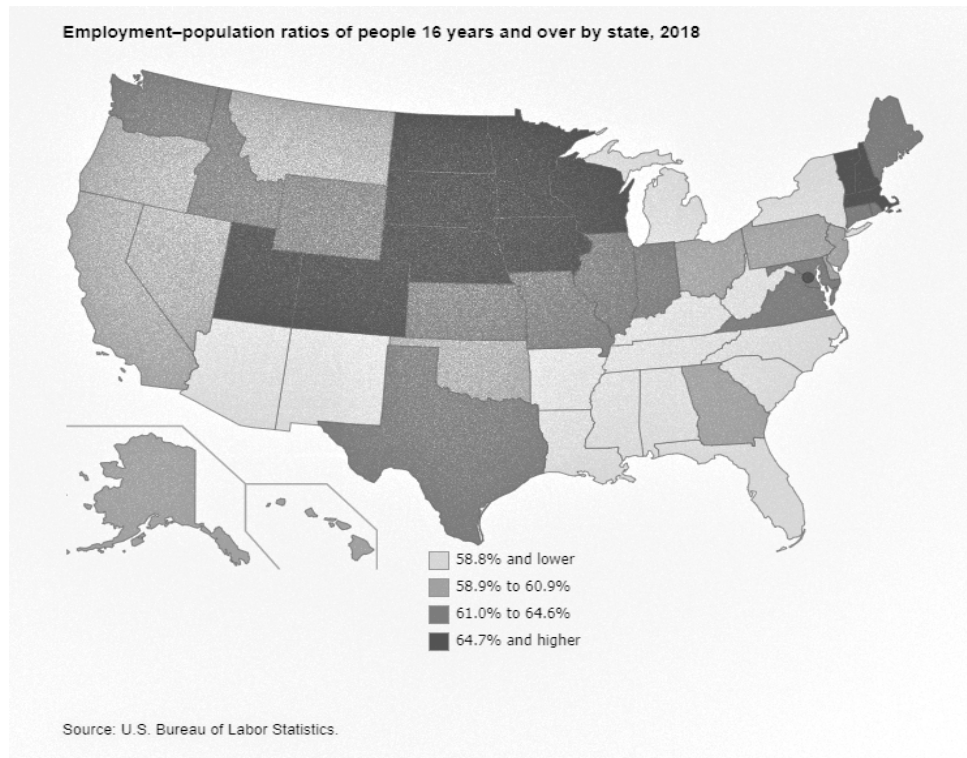
Statewide Average Weekly Hours & Earnings by Industry for January 2019			
Industry	Average Earnings (per hour)	Average # of hours worked (weekly)	Average Earnings (per week)
Construction	\$26.04	40.2	\$1,046.81
Manufacturing	\$21.08	41.8	\$881.14
Durable Goods	\$21.55	42.1	\$907.26
Fabricated Metal Product Manufacturing	\$17.22	40.5	\$697.41
Transportation Equipment Manufacturing	\$25.31	46.0	\$1,164.26
Non-Durable Goods	\$19.85	41.2	\$817.82
Retail Trade	\$14.59	28.5	\$415.82
Financial Activities	\$22.72	35.3	\$802.02
Health Care and Social Assistance	\$22.83	32.9	\$751.11
Accommodation and Food Services	\$11.79	22.7	\$267.63
Food Services and Drinking Places	\$11.14	21.8	\$242.85

Source: Indiana Department of Workforce Development, Current Employment Statistics

## Minnesota, North Dakota, and Nebraska had the highest employment–population ratios in 2018

MARCH 06, 2019

Among the states, Minnesota had the highest employment–population ratio in 2018 (67.8 percent), followed by North Dakota (67.7 percent) and Nebraska (67.3 percent). West Virginia had the lowest employment–population ratio among the states in 2018 (51.0 percent), as it has since the data series began in 1976. Overall, 22 states and the District of Columbia had employment–population ratios significantly higher than the U.S. ratio of 60.4 percent and 17 states had ratios that were appreciably below it.



The largest employment–population ratio increase among the states in 2018 occurred in Massachusetts (+1.6 percentage points). Eight other states also had significant increases in their ratios. North Dakota was the only state with a statistically significant decrease in its employment–population ratio over the year (–1.2 percentage points). The remaining 40 states and the District of Columbia had ratios that were not notably different from those of the previous year, though some had changes that were at least as large numerically as the significant changes.

These data are from the Local Area Unemployment Statistics program. The employment–population ratio is the proportion of the civilian noninstitutional population 16 years of age and over who are employed. To learn more, see “Regional and State Unemployment – 2018 Annual Averages.”

Bureau of Labor Statistics, U.S. Department of Labor, The Economics Daily, Minnesota, North Dakota, and Nebraska had the highest employment–population ratios in 2018 on the Internet at <https://www.bls.gov/opub/ed/2019/minnesota-north-dakota-and-nebraska-had-the-highest-employment-population-ratios-in-2018.htm>

