



# HOOSIERS BY THE NUMBERS

Your premier source for labor market information for Indiana.



LABOR MARKET REVIEW



May 2024  
Labor Market Review

Reported by: Mike Petro

Regional Workforce Analyst

[Email Mike](#)

[gpetro@dwd.in.gov](mailto:gpetro@dwd.in.gov)



## LABOR MARKET REVIEW

# Economic Growth Region 12

Statistical Data Report for May 2024, Released July 2024

### State Employment and Unemployment

#### STATE EMPLOYMENT AND UNEMPLOYMENT -- MAY 2024

Unemployment rates were lower in May in 4 states, higher in 3 states, and stable in 43 states and the District of Columbia, the U.S. Bureau of Labor Statistics reported. Thirty-three states and the District had jobless rate increases from a year earlier, 2 states had decreases, and 15 states had little change. The national unemployment rate changed little at 4.0 percent but was 0.3 percentage point higher than in May 2023. Nonfarm payroll employment increased in 7 states and the District of Columbia and was essentially unchanged in 43 states in May 2024. Over the year, nonfarm payroll employment increased in 30 states and was essentially unchanged in 20 states and the District.

Source: Bureau of Labor Statistics

#### May 2024 Labor Force Estimates (not seasonally adjusted)

Area	Labor Force	Employed	Unemployed	May-24	Apr-24	May-23
U.S.	167,576,000	161,341,000	6,235,000	3.7%	3.5%	3.4%
IN	3,383,814	3,250,957	132,857	3.9%	3.4%	3.4%
EGR 12	515,253	497,605	17,648	3.4%	4.0%	2.7%
Indy-Carmel MSA	1,126,166	1,085,820	40,346	3.6%	3.1%	3.1%
Marion Co.	513,503	493,704	19,799	3.9%	3.4%	3.3%
Indianapolis (cons.)	470,504	452,244	18,260	3.9%	3.5%	3.4%

Source: Indiana Department of Workforce Development, Research & Analysis, Local Area Unemployment Statistics | Unemployment Statistics Released:06/24

Notes: The data displayed are presented as estimates only. The most recent month's data are always preliminary and are revised when the next month's data are released.

#### SNAPSHOT

### May Indiana Employment

Released June 25, 2024



#### Unemployment Rate

\*seasonally adjusted

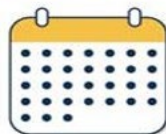
##### Unemployment Rate

**3.7%**



##### April 2024 Indiana

**3.6%**



##### National Unemployment Rate

**4.0%**



#### LABOR FORCE PARTICIPATION RATE\*

16+: **62.4%**

25-44: **81.3%**

25-54: **81.0%**



##### National Labor Force



### Economic Growth Region (EGR) 12

Marion County

#### Unemployment Rates by State (seasonally adjusted): May 2024

U.S. - 4%

Illinois - 4.9%

Indiana - 3.7%

Kentucky - 4.6%

Michigan - 3.9%

Ohio - 4.2%

Source: U.S. Department of Labor, Bureau of Labor Statistics

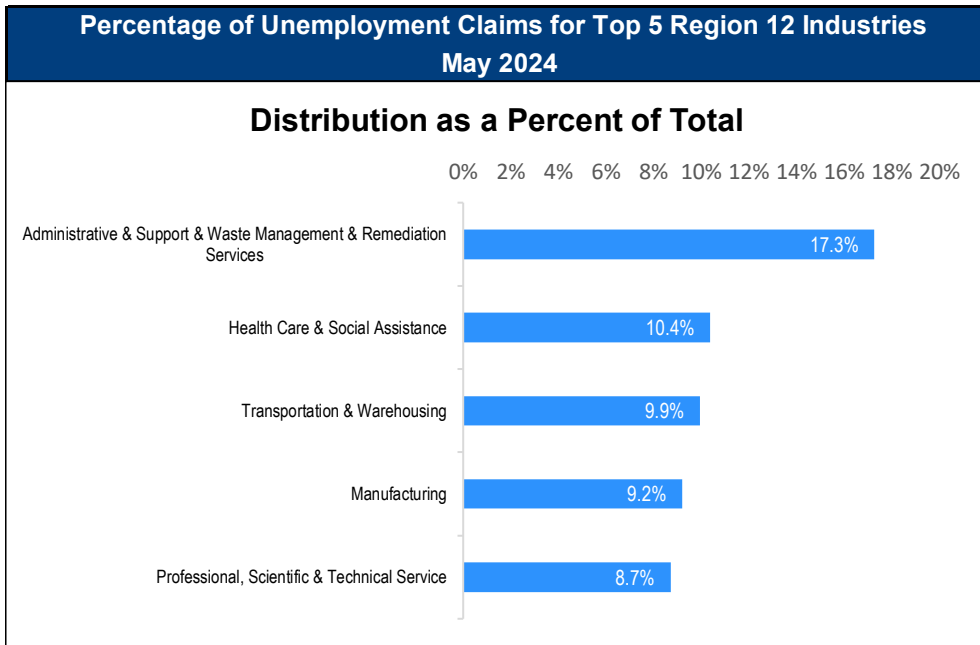
#### Unemployment Rank by County (of 92 counties): May 2024

#35 - Marion (3.9%)

Source: Indiana Department of Workforce Development, Research and Development, Local Area Unemployment Statistics

Consumer Price Index (CPI-U Change), Unadjusted Percent Change to May 2024 from				
CPI Item	May-23	Apr-24	May-23	Apr-24
	U.S. City		Midwest Region*	
<b>All Items</b>	<b>3.3%</b>	<b>0.2%</b>	<b>2.7%</b>	<b>0.2%</b>
Food & Beverages	2.1%	0.1%	1.5%	0.2%
Housing	4.6%	0.3%	4.6%	0.7%
Apparel	0.8%	-0.8%	1.7%	-0.4%
Transportation	2.9%	0.0%	0.6%	-0.2%
Medical Care	3.1%	0.5%	2.5%	-0.1%
Recreation	1.3%	-0.2%	-0.1%	-0.9%
Education & Communication	0.5%	-0.1%	-0.3%	-0.4%
Other Goods & Services	3.8%	0.1%	6.9%	0.3%

\*Midwest region = Midwest Urban Average. Midwest Region includes Illinois, Indiana, Iowa, Kansas, Michigan, Minnesota, Missouri, Nebraska, North Dakota, Ohio, South Dakota and Wisconsin | Source: U.S. Bureau of Labor Statistics



Source: Indiana Department of Workforce Development, Research and Analysis

## WARN Notices

WARN Notices for Region 12 for May 2024				
Company	City	County	# of workers affected	Notice Date

**There are no WARN Notices for May 2024 for Region 12**

Source: Indiana Department of Workforce Development, WARN Notices | For information on WARN Act requirements, you may go to the U.S. Department of Labor Employment Training Administration Fact Sheet:

<https://www.doleta.gov/programs/factsht/warn.htm>

## Unemployment Claims: May 2024

### Region 12

#### Initial Claims

05/04/24 - 461

05/11/24 - 438

05/18/24 - 412

05/25/24 - 397

#### Continued Claims

05/04/24 - 2,865

05/11/24 - 2,842

05/18/24 - 2,816

05/25/24 - 2,733

#### Total Claims

05/04/24 - 3,326

05/11/24 - 3,280

05/18/24 - 3,228

05/25/24 - 3,130

### State of Indiana

#### Initial Claims

05/04/24 - 4,711

05/11/24 - 3,632

05/18/24 - 2,527

05/25/24 - 2,595

#### Continued Claims

05/04/24 - 22,119

05/11/24 - 20,140

05/18/24 - 19,458

05/25/24 - 19,395

#### Total Claims

05/04/24 - 26,830

05/11/24 - 23,772

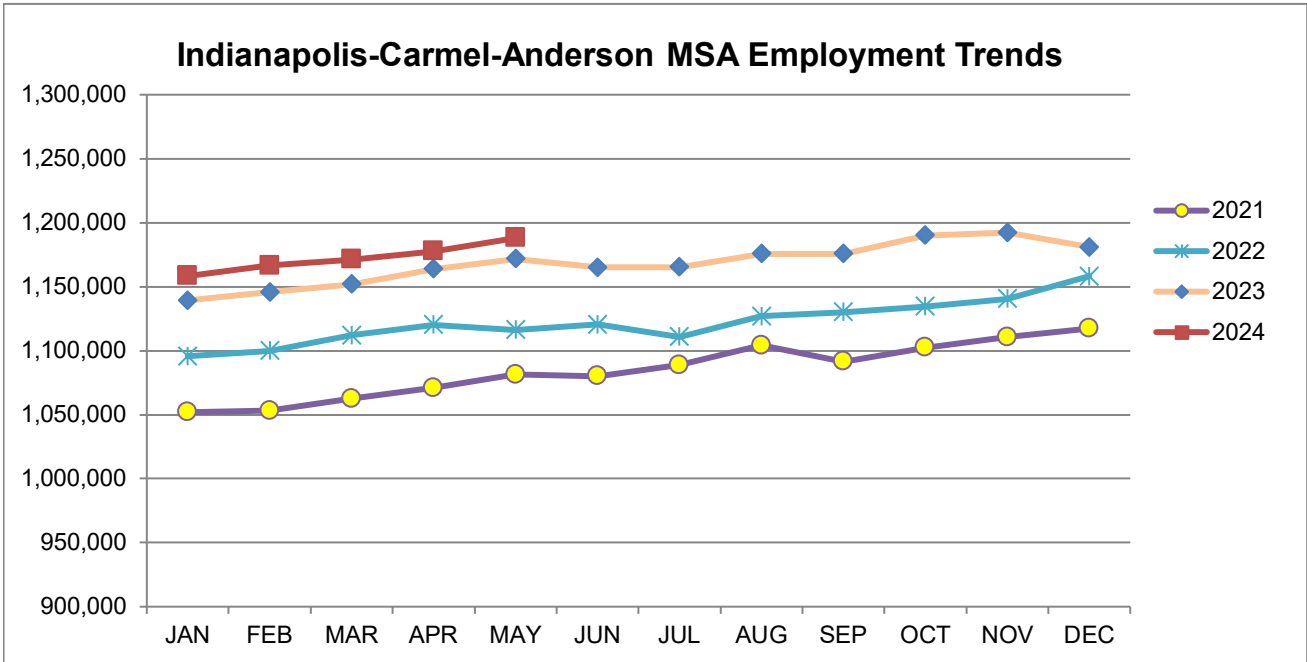
05/18/24 - 21,985

05/25/24 - 21,990

(D) indicates item is affected by non-disclosure issues relating to industry or ownership status | \*Numbers subject to weekly revision | Source: Indiana Department of Workforce Development, Research and Development

Indianapolis-Carmel-Anderson MSA							
Wage and Salaried Employment	May 2024			# Change	% Change	# Change	% Change
Industry	May-24	Apr-24	May-23	Apr-24 to May-24		May-23 to May-24	
<b>Total Nonfarm</b>	<b>1,188,000</b>	<b>1,177,600</b>	<b>1,162,300</b>	<b>10,400</b>	<b>0.9%</b>	<b>25,700</b>	<b>2.2%</b>
<b>Total Private</b>	<b>1,039,900</b>	<b>1,031,800</b>	<b>1,019,100</b>	<b>8,100</b>	<b>0.8%</b>	<b>20,800</b>	<b>2.0%</b>
Goods Producing	165,500	163,800	159,900	1,700	1.0%	5,600	3.5%
Service-Providing	1,022,500	1,013,800	1,002,400	8,700	0.9%	20,100	2.0%
Private Service Providing	874,400	868,000	859,200	6,400	0.7%	15,200	1.8%
Mining and Logging	800	800	700	0	0.0%	100	14.3%
Mining, Logging and Construction	65,900	64,700	62,300	1,200	1.9%	3,600	5.8%
Construction	65,100	63,900	61,600	1,200	1.9%	3,500	5.7%
Specialty Trade Contractors	40,600	39,900	38,500	700	1.8%	2,100	5.5%
Manufacturing	99,600	99,100	97,600	500	0.5%	2,000	2.1%
Durable Goods	53,800	53,700	52,400	100	0.2%	1,400	2.7%
Transportation Equipment Manufacturing	15,100	15,000	14,600	100	0.7%	500	3.4%
Motor Vehicle Parts Manufacturing	10,000	10,000	9,800	0	0.0%	200	2.0%
Non-Durable Goods	45,800	45,400	45,200	400	0.9%	600	1.3%
Chemical Manufacturing	19,900	19,700	19,200	200	1.0%	700	3.7%
Trade, Transportation, and Utilities	246,300	245,600	244,100	700	0.3%	2,200	0.9%
Wholesale Trade	56,300	56,400	55,500	-100	-0.2%	800	1.4%
Merchant Wholesalers, Durable Goods	37,300	36,700	35,800	600	1.6%	1,500	4.2%
Retail Trade	100,600	99,400	99,500	1,200	1.2%	1,100	1.1%
General Merchandise Stores	24,400	24,300	23,600	100	0.4%	800	3.4%
Department Stores	4,200	4,300	4,100	-100	-2.3%	100	2.4%
Other General Merchandise Stores	20,200	20,000	19,500	200	1.0%	700	3.6%
Transportation, Warehousing, and Utilities	89,400	89,800	89,100	-400	-0.5%	300	0.3%
Transportation and Warehousing	86,200	86,600	85,800	-400	-0.5%	400	0.5%
Information	12,100	12,000	12,600	100	0.8%	-500	-4.0%
Telecommunications	2,900	2,900	2,900	0	0.0%	0	0.0%
Financial Activities	75,600	74,900	75,100	700	0.9%	500	0.7%
Finance and Insurance	57,600	57,200	57,700	400	0.7%	-100	-0.2%
Insurance Carriers and Related Activities	36,300	36,100	36,200	200	0.6%	100	0.3%
Insurance Carriers	20,100	20,000	20,000	100	0.5%	100	0.5%
Professional and Business Services	188,200	185,100	187,700	3,100	1.7%	500	0.3%
Professional, Scientific, and Technical Services	81,600	80,900	81,700	700	0.9%	-100	-0.1%
Management of Companies and Enterprises	15,000	14,900	14,600	100	0.7%	400	2.7%
Administrative and Support and Waste Management and Remediation Services	91,600	89,300	91,400	2,300	2.6%	200	0.2%
Administrative and Support Services	87,500	85,300	86,800	2,200	2.6%	700	0.8%
Employment Services	43,500	42,700	43,800	800	1.9%	-300	-0.7%
Education and Health Services	189,300	191,400	180,200	-2,100	-1.1%	9,100	5.1%
Educational Services	22,500	24,200	22,600	-1,700	-7.0%	-100	-0.4%
Health Care and Social Assistance	166,800	167,200	157,600	-400	-0.2%	9,200	5.8%
Ambulatory Health Care Services	73,200	73,200	69,200	0	0.0%	4,000	5.8%
Hospitals	46,100	46,300	43,800	-200	-0.4%	2,300	5.3%
Leisure and Hospitality	116,900	113,400	114,500	3,500	3.1%	2,400	2.1%
Accommodation and Food Services	94,400	92,800	95,400	1,600	1.7%	-1,000	-1.1%
Food Services and Drinking Places	85,800	84,400	87,600	1,400	1.7%	-1,800	-2.1%
Restaurants and Other Eating Places	77,800	76,100	79,200	1,700	2.2%	-1,400	-1.8%
Full-service restaurants	37,100	36,400	37,900	700	1.9%	-800	-2.1%
Limited-Service Restaurants and Other Eating Places	40,700	39,700	41,300	1,000	2.5%	-600	-1.5%
Other Services	46,000	45,600	45,000	400	0.9%	1,000	2.2%
<b>Total Government</b>	<b>148,100</b>	<b>145,800</b>	<b>143,200</b>	<b>2,300</b>	<b>1.6%</b>	<b>4,900</b>	<b>3.4%</b>
Federal Government	19,200	18,900	18,500	300	1.6%	700	3.8%
State Government	36,400	36,900	36,000	-500	-1.4%	400	1.1%
Local Government	92,500	90,000	88,700	2,500	2.8%	3,800	4.3%
Local Government Educational Services	45,800	44,800	44,300	1,000	2.2%	1,500	3.4%

Source: Indiana Dept of Workforce Development, Research and Analysis, Current Employment Statistics



Source: Indiana Department of Workforce Development, Research & Analysis, Current Employment Statistics | *Note:* Historical data for the most recent 4 years (both seasonally adjusted and not seasonally adjusted) are revised near the beginning of each calendar year, prior to the release of January estimates for statewide data.

Frequently Listed Jobs	
Top 20 job listings by number of openings in Region 12 in the past month	
Rank	Occupations
1	Registered Nurses
2	Stockers and Order Fillers
3	Accountants and Auditors
4	Sales Managers
5	Marketing Managers
6	Maintenance and Repair Workers, General
7	Retail Salespersons
8	Software Developers
9	Licensed Practical and Licensed Vocational Nurses
10	Construction Managers
11	Computer and Information Systems Managers
12	Sales Representatives of Services, Except Advertising, Insurance, Financial Services, and Travel
13	Sales Representatives, Wholesale and Manufacturing, Technical and Scientific Products
14	Customer Service Representatives
15	Laborers and Freight, Stock, and Material Movers, Hand
16	Civil Engineers
17	General and Operations Managers
18	Management Analysts
19	Critical Care Nurses
20	Managers, All Other

Source: Indiana Workforce Development, Indiana Career Connect

Applicant Pool	
Top 20 occupations desired by applicants on their resumes in the past 12 months	
Occupations	# of applicants
Customer Service Representatives	1,501
Laborers and Freight, Stock, and Material Movers, Hand	826
Production Workers, All Other	747
Cashiers	675
Assemblers and Fabricators, All Other	623
Helpers--Production Workers	477
Heavy and Tractor-Trailer Truck Drivers	409
Packers and Packagers, Hand	403
Office Clerks, General	388
Industrial Truck and Tractor Operators	353
Managers, All Other	321
Office and Administrative Support Workers, All Other	312
Retail Salespersons	292
Executive Secretaries and Executive Administrative Assistants	262
Receptionists and Information Clerks	258
Data Entry Keyers	253
Shipping, Receiving, and Traffic Clerks	248
Janitors and Cleaners, Except Maids and Housekeeping Cleaners	224
Medical Assistants	201
Material Moving Workers, All Other	196

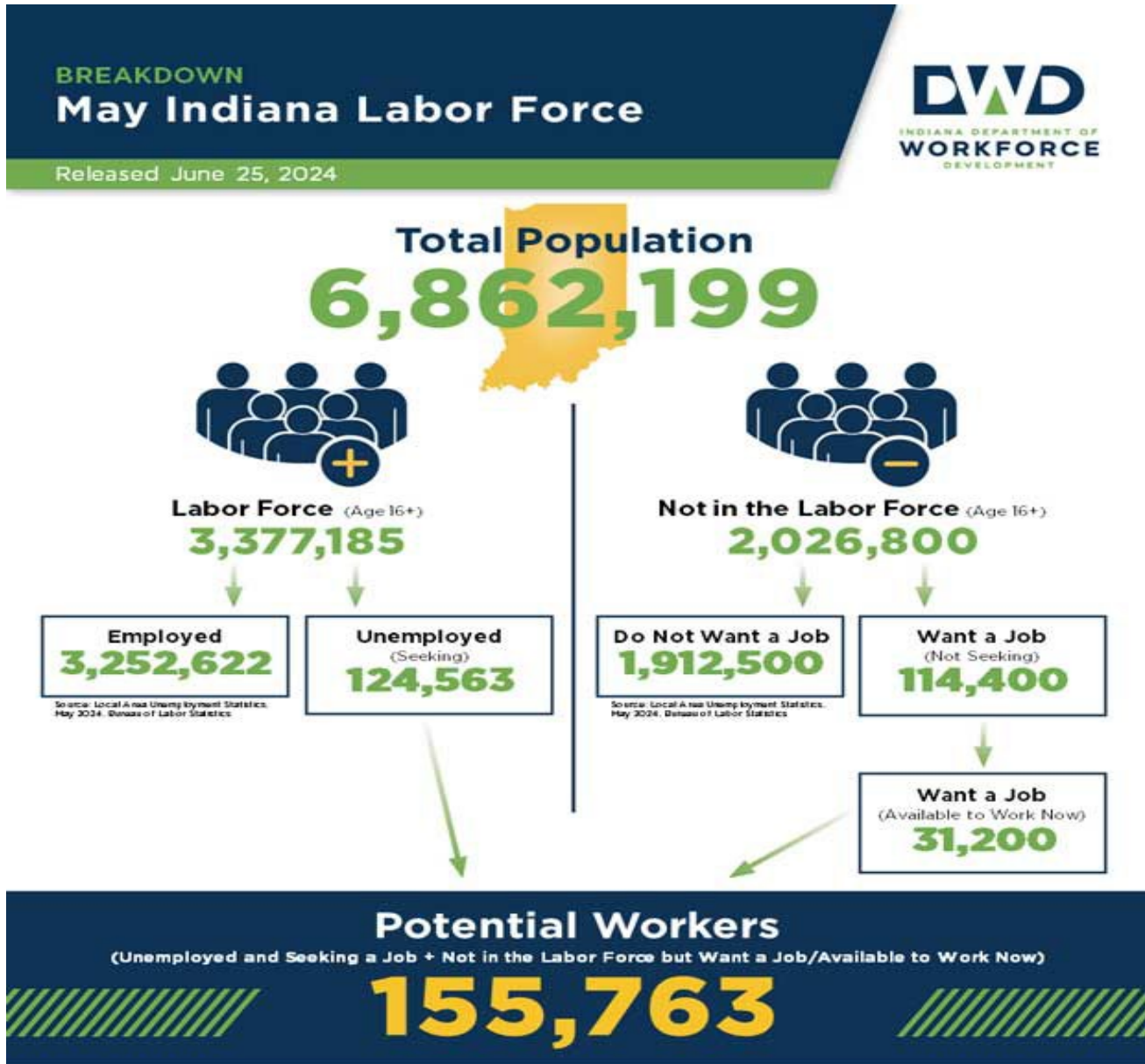
Source: Indiana Workforce Development, Indiana Career Connect

# Real Earnings Summary

## REAL EARNINGS – MAY 2024

Real average hourly earnings for all employees increased 0.5 percent from April to May, seasonally adjusted, the U.S. Bureau of Labor Statistics reported. This result stems from an increase of 0.4 percent in average hourly earnings combined with no change in the Consumer Price Index for All Urban Consumers (CPI-U). Real average weekly earnings increased 0.4 percent over the month due to the change in real average hourly earnings combined with no change in the average workweek. Real average hourly earnings increased 0.8 percent, seasonally adjusted, from May 2023 to May 2024. The change in real average hourly earnings combined with a decrease of 0.3 percent in the average workweek resulted in a 0.5-percent increase in real average weekly earnings over this period.

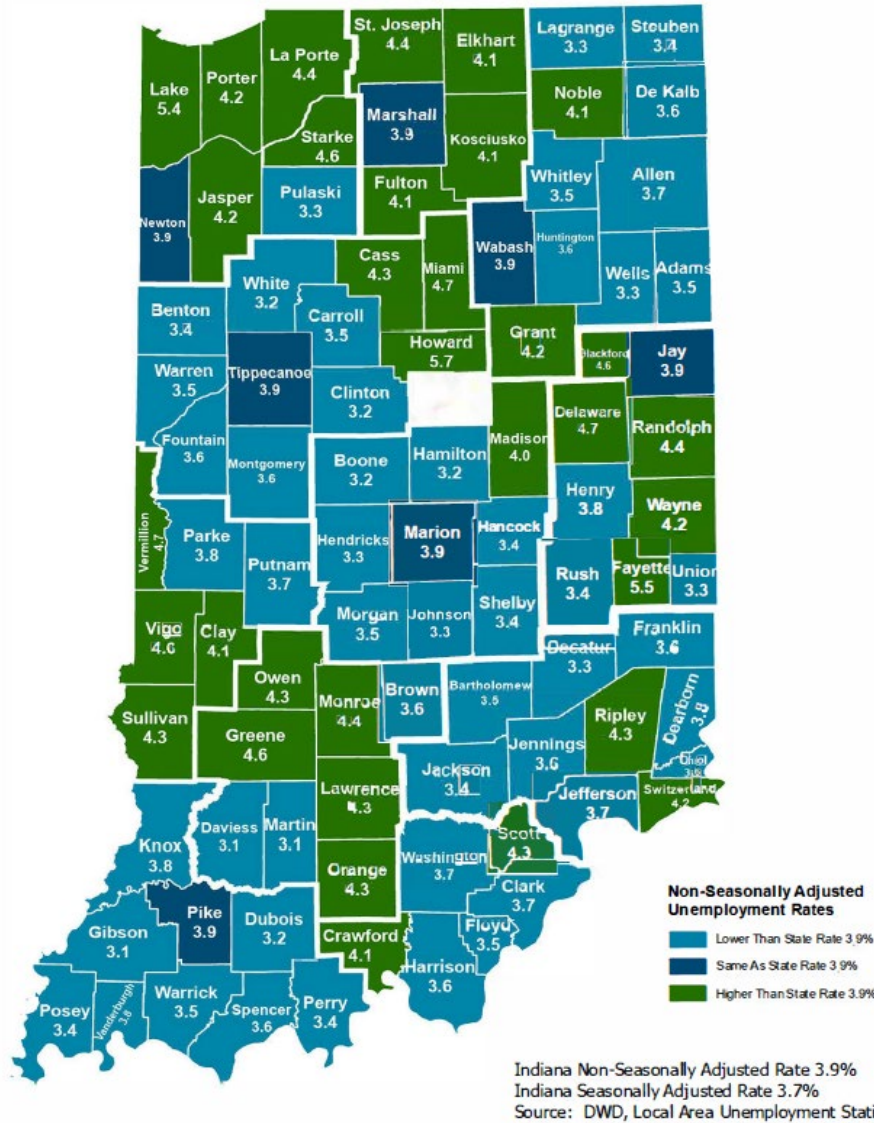
Source: U.S. Bureau of Labor Statistics



More about the U.S. Bureau of Labor Statistics data sources used within:  
Local Area Unemployment Statistics (LAUS): Captures Indiana's labor force, which includes those currently employed and those who are unemployed and actively seeking work.  
Census Population Survey (CPS): Captures individuals not participating in Indiana's Labor Force. This set includes non-participants that do not want a job (e.g. retirees and students) and those that want a job, but are not actively seeking work.  
U.S. Census Bureau, Indiana Population: 2023.

Resource: Notes on Using Census Population Survey (CPS) Subnational Data and Differences Between CPS and LAUS Estimates

# County Unemployment Rates May 2024



## Questions?

Please contact the DWD  
Research and Analysis  
Regional Labor Analyst  
listed below:

**Mike Petro**  
Regional Labor Analyst  
Research and Analysis

[Indiana Department of  
Workforce Development](https://www.in.gov/dwd/)  
[gpetro@dwd.in.gov](mailto:gpetro@dwd.in.gov)