



HOOSIERS BY THE NUMBERS

Your premier source for labor market information for Indiana.



INDUSTRY SECTOR SNAPSHOT

Economic Growth Region 12

Quarter 4 2023

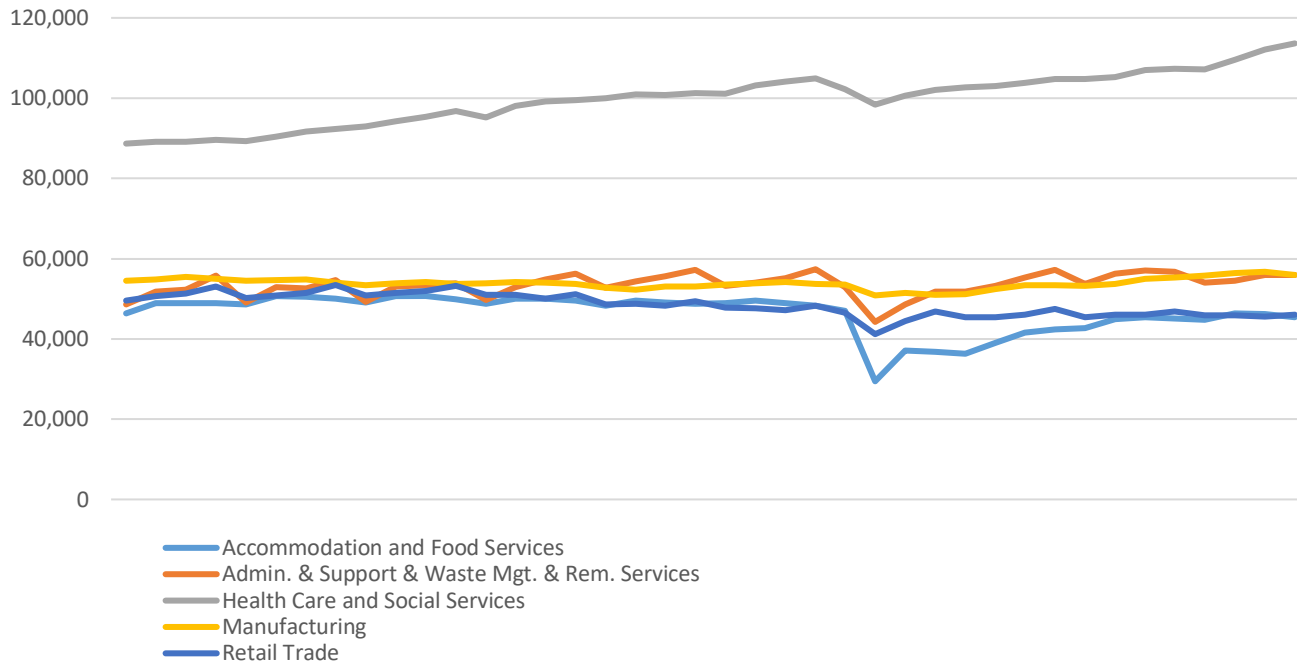
Marion County

Industry	Jobs	Previous Year	Establishments	Previous Year	Average Weekly Wage	Previous Year
Total	627,248	↑ 1.79%	25,446	↑ 2.36%	\$1,398	↑ 3.86%
Accommodation and Food Services	45,361	↑ 0.53%	2,177	↑ 0.32%	\$554	↑ 3.36%
Admin. & Support & Waste Mgt. & Rem. Services	55,951	↓ -1.35%	1,853	↑ 5.22%	\$892	↑ 1.94%
Agriculture, Forestry, Fishing and Hunting	430	↓ -16.18%	29	↓ -14.71%	\$1,189	↓ -3.02%
Arts, Entertainment, and Recreation	10,204	↑ 6.09%	367	↑ 6.38%	\$1,857	↑ 7.03%
Construction	35,291	↑ 8.37%	1,848	↑ 0.65%	\$1,728	↑ 2.37%
Educational Services	41,568	↑ 2.18%	517	↑ 0.39%	\$1,058	↑ 4.96%
Finance and Insurance	26,872	↓ -1.48%	1,570	↑ 3.49%	\$1,796	↑ 4.78%
Health Care and Social Services	113,640	↑ 5.88%	2,536	↑ 4.84%	\$1,452	↑ 1.75%
Information	7,856	↓ -2.45%	455	↑ 3.41%	\$1,577	↑ 2.07%
Management of Companies and Enterprises	9,219	↑ 4.19%	225	↑ 7.14%	\$2,105	↑ 4.10%
Manufacturing	56,011	↑ 1.25%	909	↓ -1.52%	\$2,017	↑ 10.95%
Mining	239	↑ 6.70%	12	○ 0.00%	\$1,608	↓ -4.63%
Other Services (Except Public Administration)	20,128	↑ 5.47%	2,048	↑ 1.14%	\$1,066	↑ 3.39%
Professional, Scientific, and Technical Services	44,785	↓ -0.60%	3,780	↑ 3.48%	\$2,130	↑ 4.57%
Public Administration	29,073	↑ 5.21%	157	↓ -1.26%	\$1,489	↑ 3.69%
Real Estate and Rental and Leasing	9,919	↓ -1.98%	1,405	↑ 0.93%	\$1,450	↓ -19.62%
Retail Trade	45,972	↓ -1.78%	2,750	↑ 0.07%	\$806	↑ 1.26%
Transportation & Warehousing	43,711	↓ -3.00%	912	↑ 3.05%	\$1,225	↑ 2.25%
Utilities	2,200	↑ 1.29%	37	↑ 8.82%	\$2,109	↑ 18.28%
Wholesale Trade	28,818	↑ 2.93%	1,859	↑ 4.38%	\$1,702	↑ 2.04%

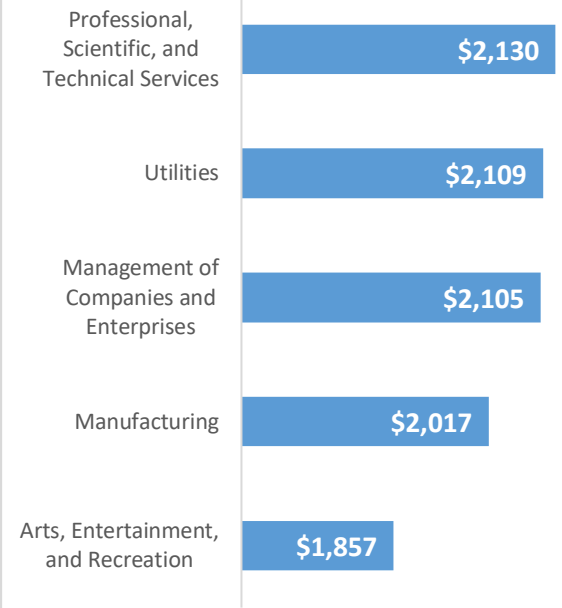
* These industries exclude county data (jobs and wages) that are not available due to non-disclosure requirements.

D = This item is not available due to non-disclosure requirements.

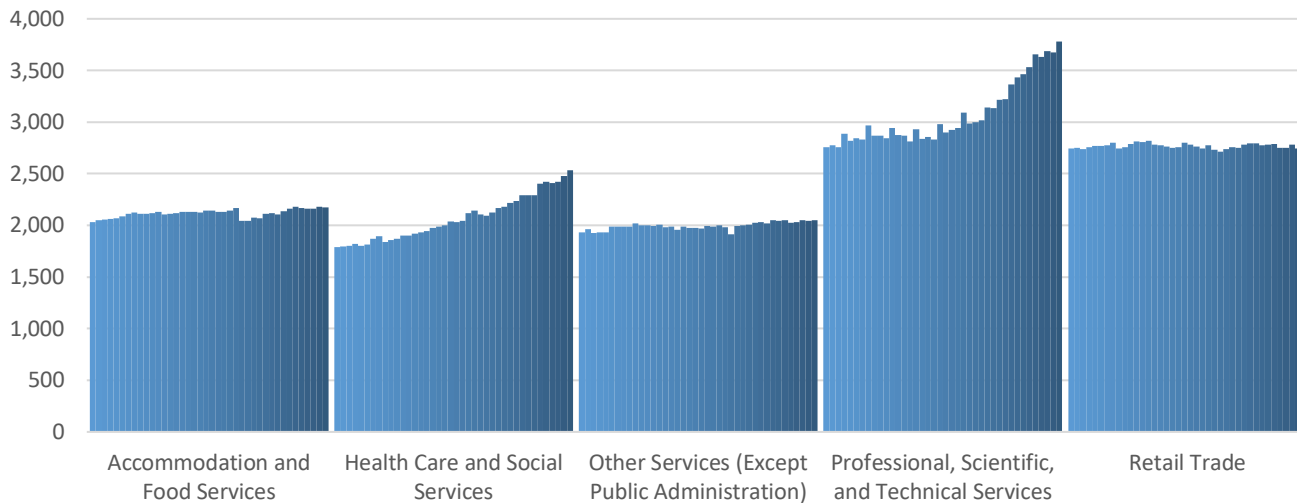
Top 5 Largest Industries by Jobs (past 10 years)



Top 5 Paying Industries by Average Weekly Wage



Top 5 Largest Industries by Establishments (past 10 years)



Source:

Quarterly Census of Employment and Wages, Indiana Dept. of Workforce Development

For more information, contact:

Alex Corn

Regional Workforce Analyst

DCorn@dwd.in.gov

